

DIST	COUNTY	ROUTE	POST MILES	SHEET NO.	TOTAL SHEETS
07	L.A.	134	5.2-8.9	1	17

A. H. Hill
 DEPUTY DISTRICT ENGINEER
 October 9, 1969
 DATE

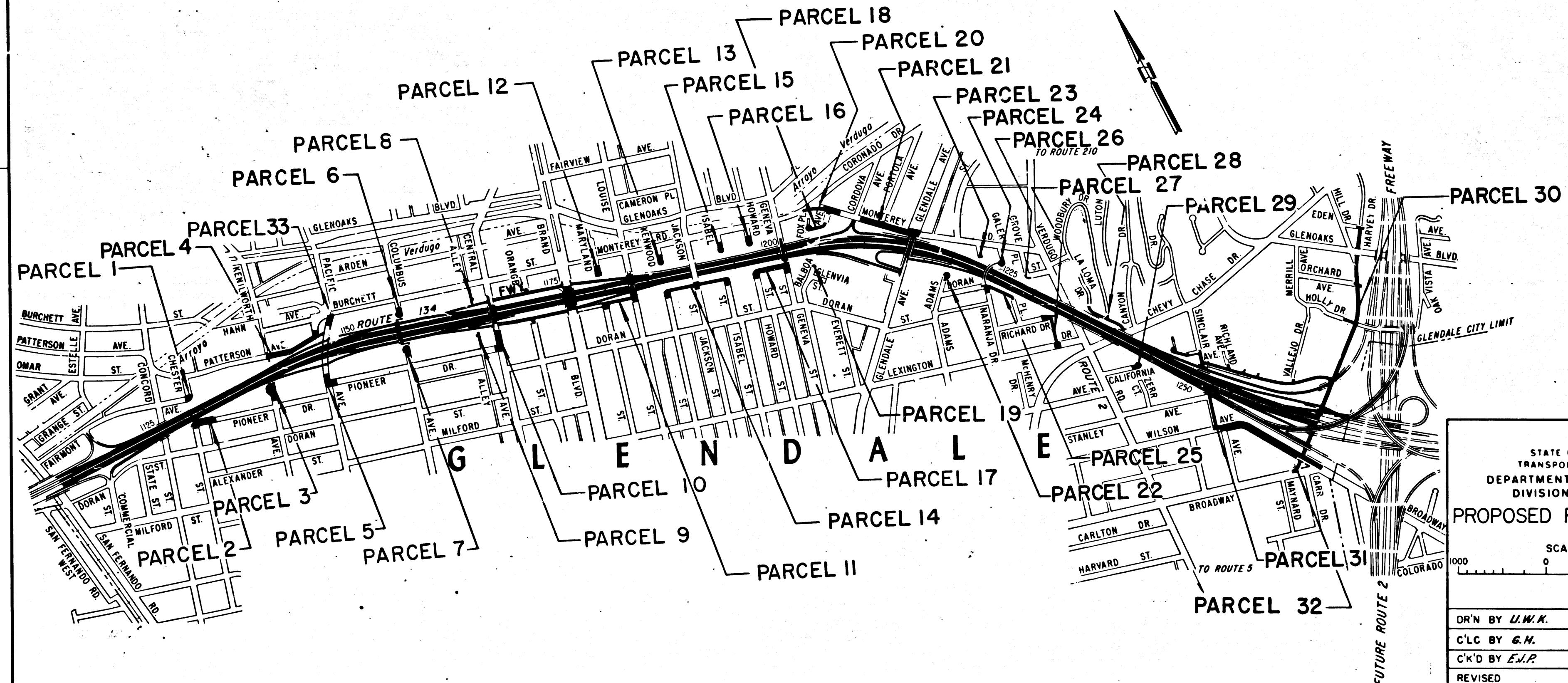
2026

FILED
 AT REQUEST OF
 DEPT. OF PUBLIC WORKS
 OCT. 16, 1969
 10 MIN.
 PAST 10 AM
 IN BOOK 8
 AT PAGE 46
 OF STATE HIGHWAY MAPS
 LOS ANGELES COUNTY, CALIF.
 RAY E. LEE
 COUNTY RECORDER
J. L. H. H. H.
 Deputy

STATE OF CALIFORNIA
 TRANSPORTATION AGENCY
 DEPARTMENT OF PUBLIC WORKS
 DIVISION OF HIGHWAYS

RIGHT OF WAY MAPS OF
STATE HIGHWAY
 In the County of Los Angeles

between the San Fernando Road U.C. and Harvey Drive U.C.



STATE OF CALIFORNIA
 TRANSPORTATION AGENCY
 DEPARTMENT OF PUBLIC WORKS
 DIVISION OF HIGHWAYS

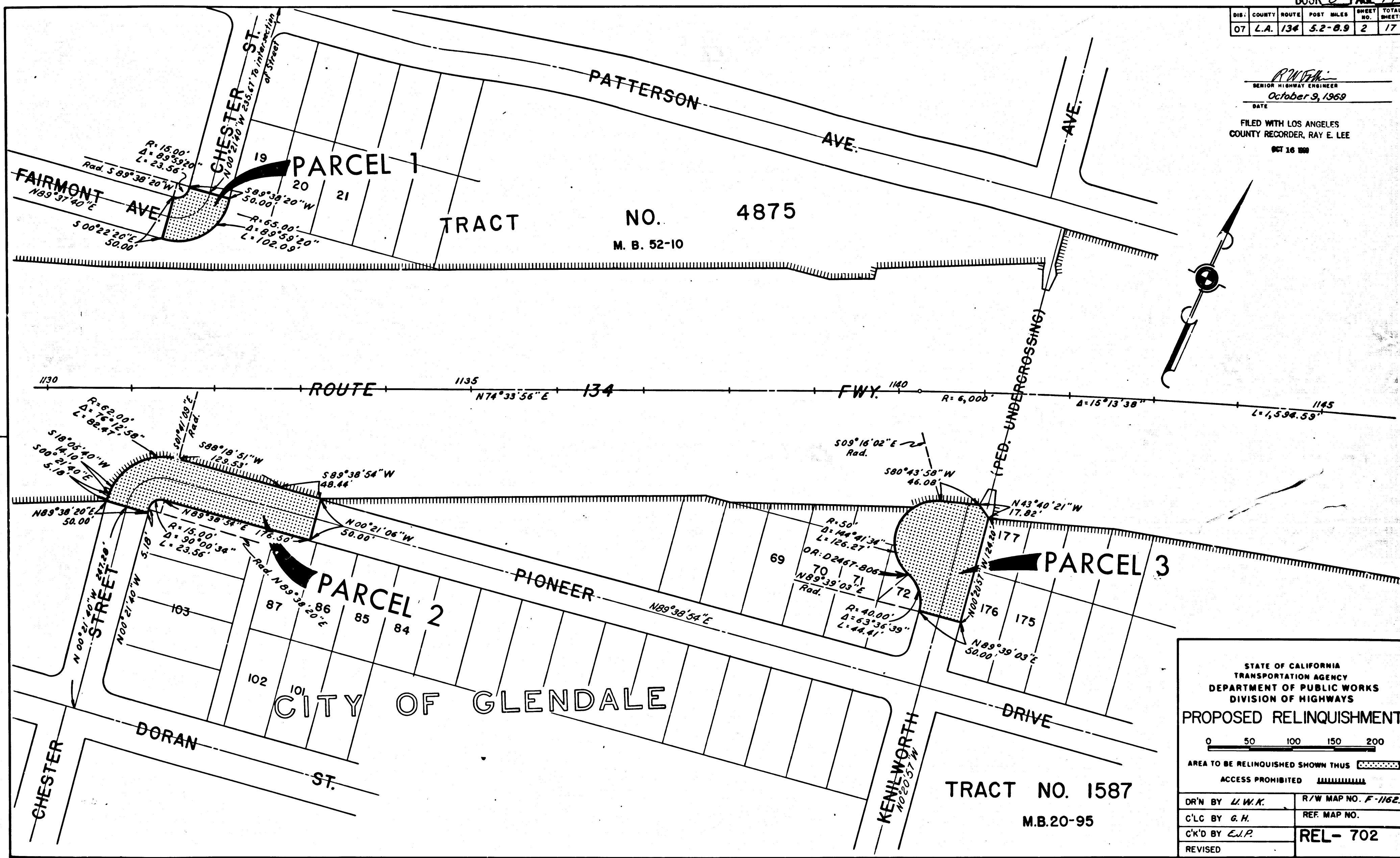
PROPOSED RELINQUISHMENT

SCALE IN FEET
 0 1000 2000

DR'N BY <i>U.W.K.</i>	R/W MAP NO. <i>F-1162, F-1163, F-1164</i>
C'LC BY <i>G.H.</i>	REF. MAP NO.
C'K'D BY <i>E.J.P.</i>	REL-702
REVISED	

DIST.	COUNTY	ROUTE	POST MILES	SHEET NO.	TOTAL SHEETS
07	L.A.	134	5.2-0.9	2	17

R. W. K.
 SENIOR HIGHWAY ENGINEER
 October 9, 1969
 DATE
 FILED WITH LOS ANGELES
 COUNTY RECORDER, RAY E. LEE
 OCT 16 1969



STATE OF CALIFORNIA
 TRANSPORTATION AGENCY
 DEPARTMENT OF PUBLIC WORKS
 DIVISION OF HIGHWAYS

PROPOSED RELINQUISHMENT

0 50 100 150 200

AREA TO BE RELINQUISHED SHOWN THUS

ACCESS PROHIBITED

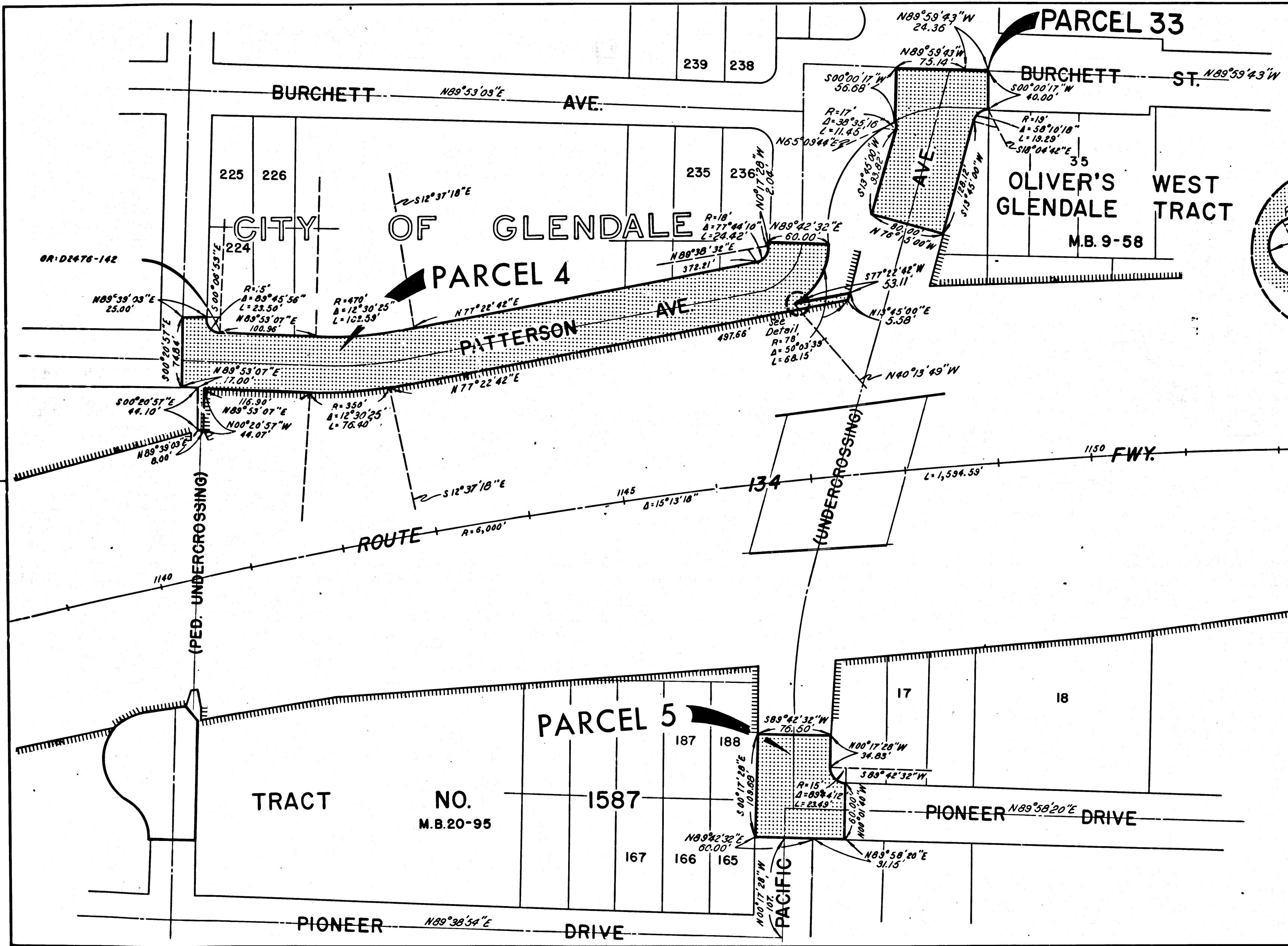
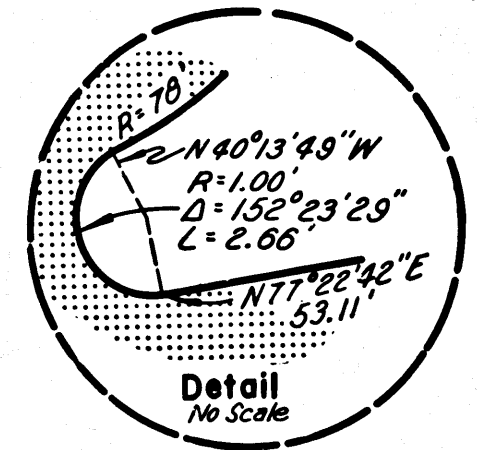
DR'N BY <i>L.W.K.</i>	R/W MAP NO. <i>F-1162.1</i>
C/LC BY <i>G.H.</i>	REF. MAP NO.
C/K'D BY <i>E.I.P.</i>	REL-702
REVISED	

COUNTY ENGINEER'S COPY

DIST	COUNTY	ROUTE	POST MILES	SHEET NO.	TOTAL SHEETS
07	L.A.	134	5.2-8.9	3	17

R.W. Field
 SENIOR HIGHWAY ENGINEER
 October 9, 1969
 DATE

FILED WITH LOS ANGELES
 COUNTY RECORDER, RAY E. LEE
 OCT 16 1969



STATE OF CALIFORNIA
 TRANSPORTATION AGENCY
 DEPARTMENT OF PUBLIC WORKS
 DIVISION OF HIGHWAYS

PROPOSED RELINQUISHMENT

0 50 100 150 200

AREA TO BE RELINQUISHED SHOWN THUS [Dotted Pattern]

ACCESS PROHIBITED [Hatched Pattern]

DR'N BY <i>L.W.K.</i>	R/W MAP NO. <i>F-1162.1</i>
C/LC BY <i>G.H.</i>	REF MAP NO.
C/K'D BY <i>E.J.P.</i>	REL-702
REVISED	

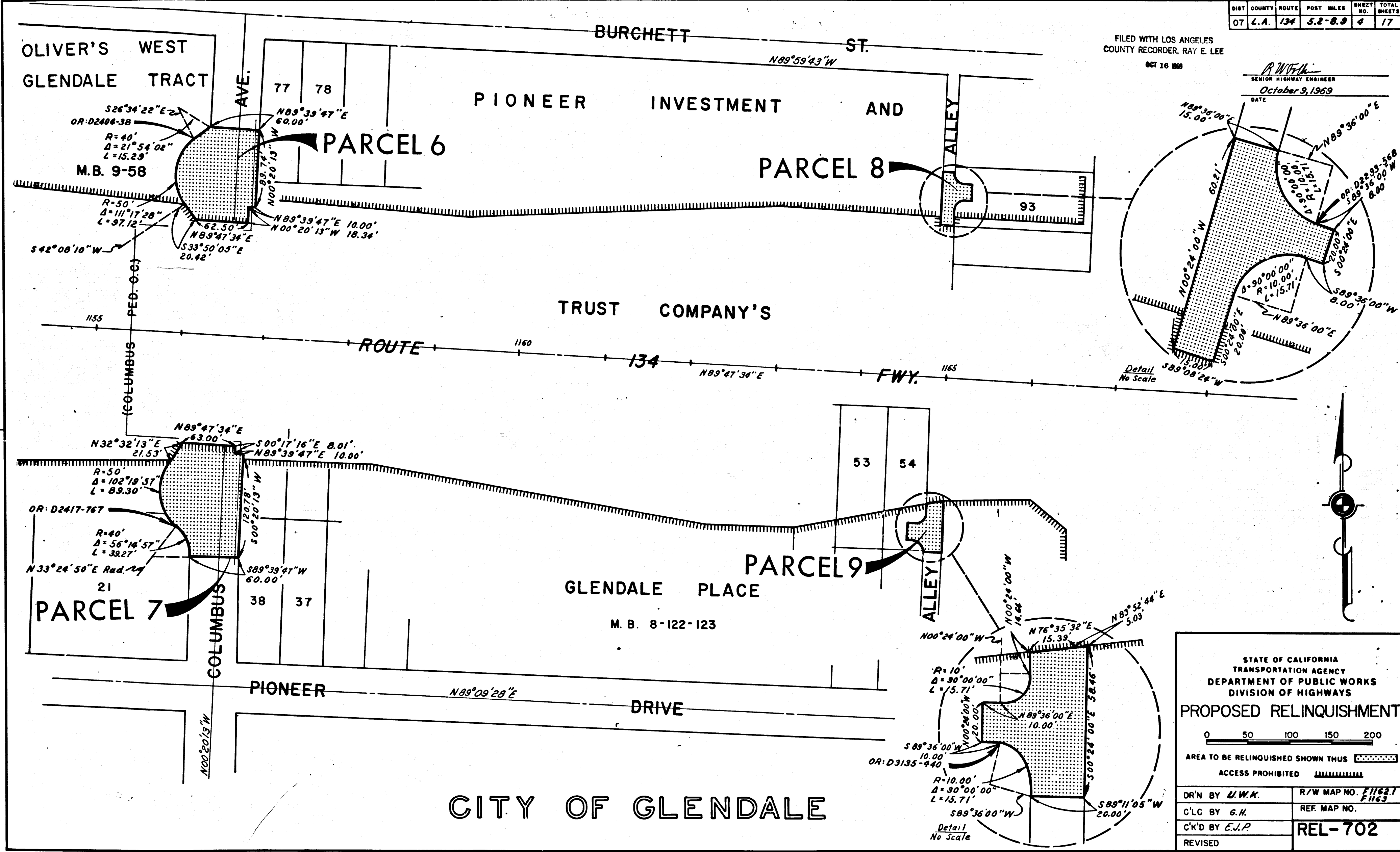
COUNTY ENGINEER'S COPY

DIST	COUNTY	ROUTE	POST MILES	SHEET NO.	TOTAL SHEETS
07	L.A.	134	5.2-8.9	4	17

FILED WITH LOS ANGELES COUNTY RECORDER, RAY E. LEE

OCT 16 1969

R.W.F.H.
SENIOR HIGHWAY ENGINEER
DATE
October 9, 1969



STATE OF CALIFORNIA
TRANSPORTATION AGENCY
DEPARTMENT OF PUBLIC WORKS
DIVISION OF HIGHWAYS

PROPOSED RELINQUISHMENT

0 50 100 150 200

AREA TO BE RELINQUISHED SHOWN THUS

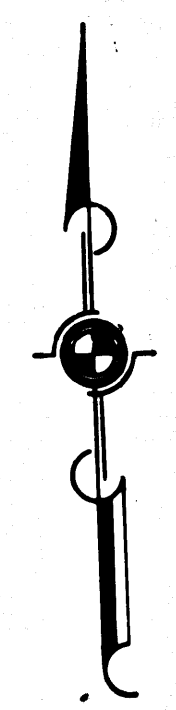
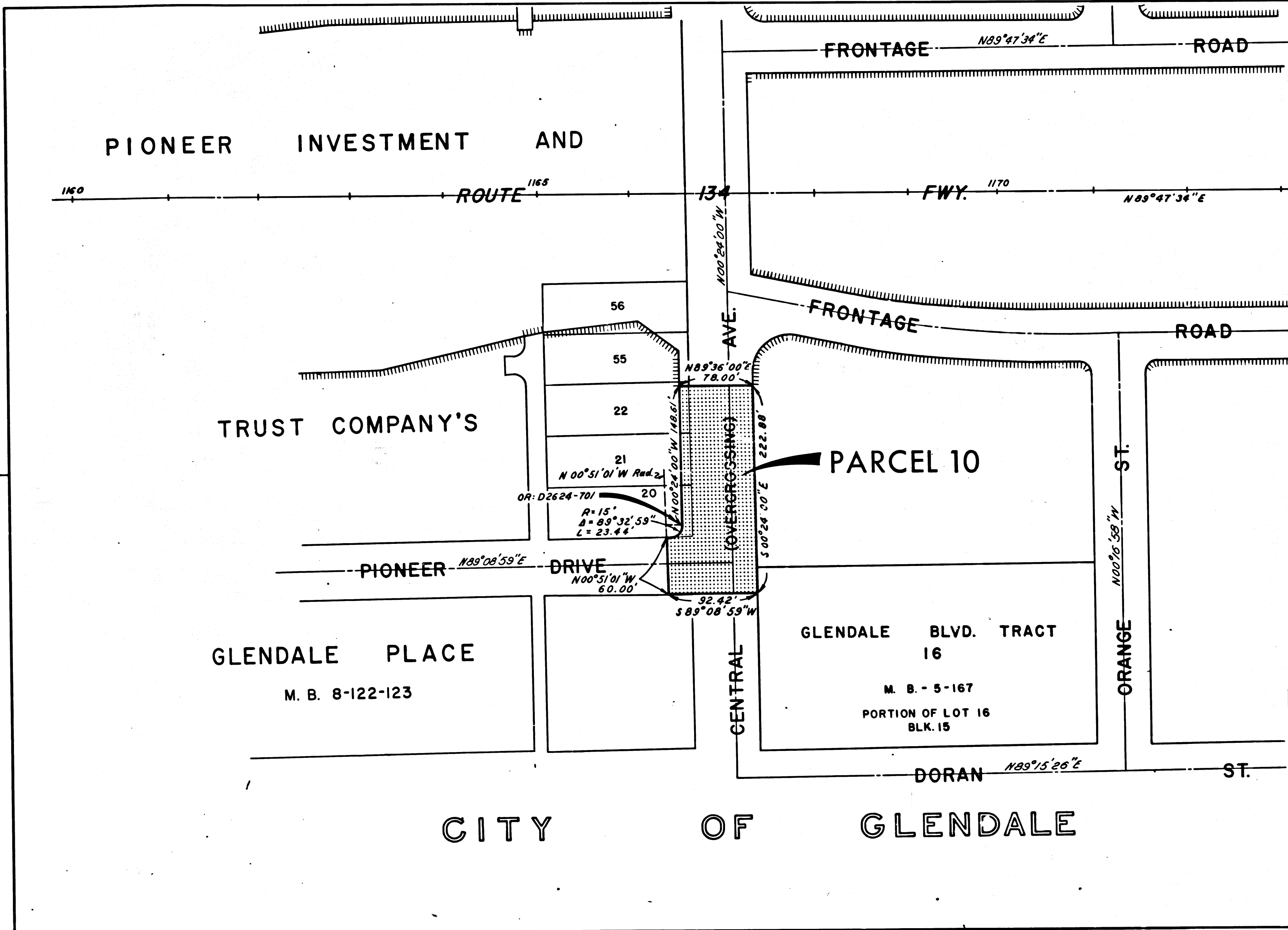
ACCESS PROHIBITED

DR'N BY <i>U.W.K.</i>	R/W MAP NO. <i>F1162.1</i> <i>F1163</i>
C'LC BY <i>G.H.</i>	REF. MAP NO.
C'K'D BY <i>E.J.P.</i>	REL-702
REVISED	

DIST	COUNTY	ROUTE	POST MILES	SHEET NO.	TOTAL SHEETS
07	L.A.	134	5.2-8.9	5	17

R.W. Volk
 SENIOR HIGHWAY ENGINEER
 DATE October 9, 1969

FILED WITH LOS ANGELES
 COUNTY RECORDER, RAY E. LEE
 OCT 16 1969



STATE OF CALIFORNIA
 TRANSPORTATION AGENCY
 DEPARTMENT OF PUBLIC WORKS
 DIVISION OF HIGHWAYS

PROPOSED RELINQUISHMENT

0 50 100 150 200

AREA TO BE RELINQUISHED SHOWN THUS

ACCESS PROHIBITED

DR'N BY <i>L.W.K.</i>	R/W MAP NO. <i>F-1163</i>
C/LC BY <i>G.H.</i>	REF. MAP NO.
C/K'D BY <i>E.J.P.</i>	REL-702
REVISED	

CITY OF GLENDALE

DIST	COUNTY	ROUTE	POST MILES	SHEET NO.	TOTAL SHEETS
07	L.A.	134	5.2-8.9	6	17

R.W.F.H.
 SENIOR HIGHWAY ENGINEER
 October 3, 1969
 DATE

FILED WITH LOS ANGELES
 COUNTY RECORDER, RAY E. LEE
 OCT 16 1969



BURGHETT ST. $N89^{\circ}15'49''E$

BOULEVARD
 BRAND (OVERCROSSING) $N00^{\circ}17'27''W$

LOUISE ST. (OVERCROSSING) $N00^{\circ}17'31''W$

TRACT NO. 93 3

PARCEL 12

PARCEL 11

ROUTE 134 FWY. $N89^{\circ}47'34''E$

FRONTAGE ROAD

TRACT NO. 93
 CITY OF GLENDALE
 M.B. 14 - 22,23

STATE OF CALIFORNIA
 TRANSPORTATION AGENCY
 DEPARTMENT OF PUBLIC WORKS
 DIVISION OF HIGHWAYS

PROPOSED RELINQUISHMENT

0 50 100 150 200

AREA TO BE RELINQUISHED SHOWN THUS

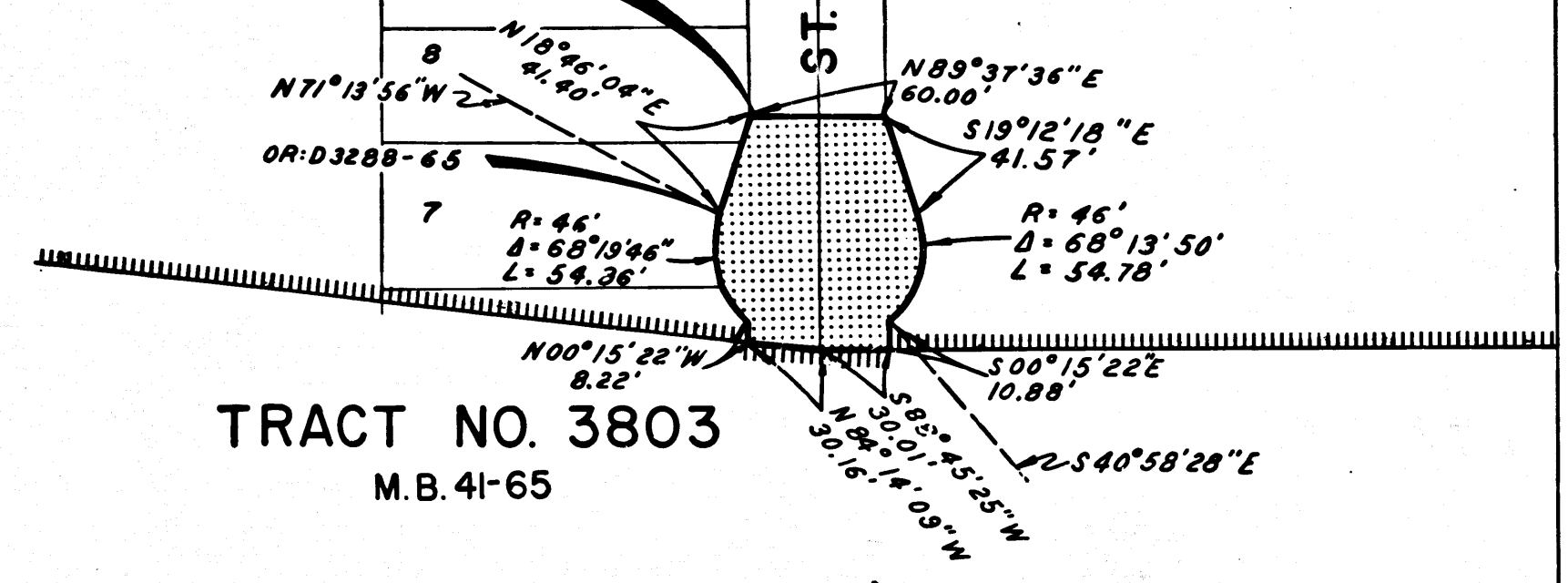
ACCESS PROHIBITED

DR'N BY <i>L.W.K.</i>	R/W MAP NO. <i>F1163</i>
C'LC BY <i>G.H.</i>	REF. MAP NO.
C'K'D BY <i>E.L.R.</i>	REL-702
REVISED	

DIST	COUNTY	ROUTE	POST MILES	SHEET NO.	TOTAL SHEETS
07	L.A.	134	5.2-8.9	7	17

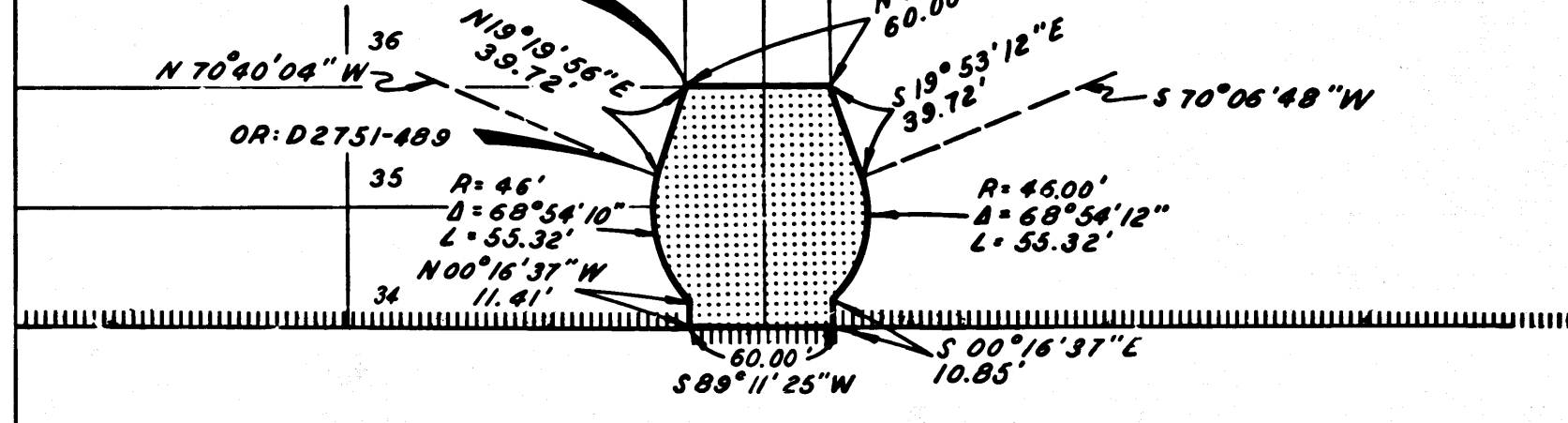
R.W.F.M.
 SENIOR HIGHWAY ENGINEER
 October 9, 1959
 DATE
 FILED WITH LOS ANGELES
 COUNTY RECORDER, RAY E. LEE
 OCT 16 1959

PARCEL 13

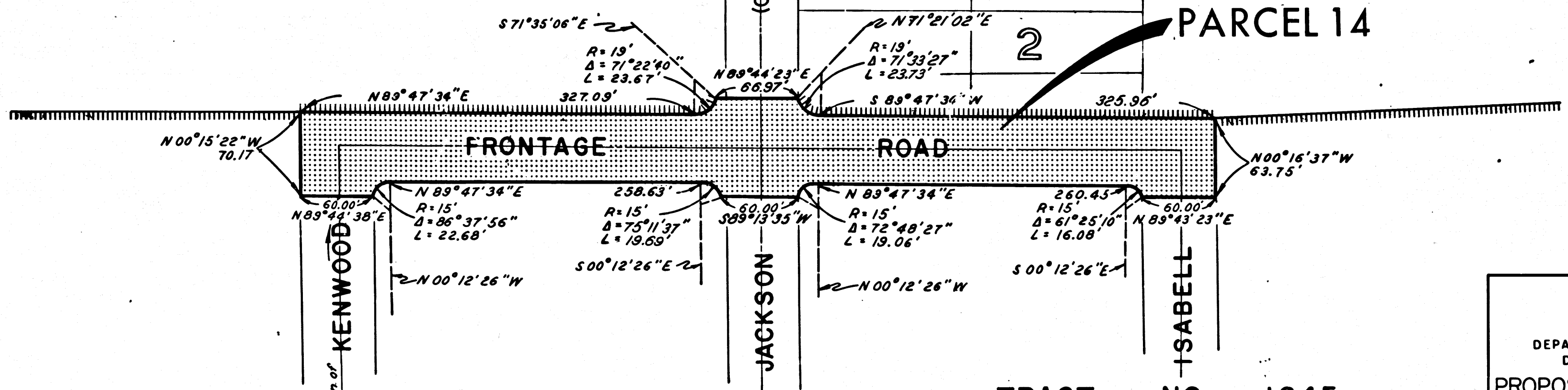


TRACT NO. 3803
 M.B. 41-65

PARCEL 15

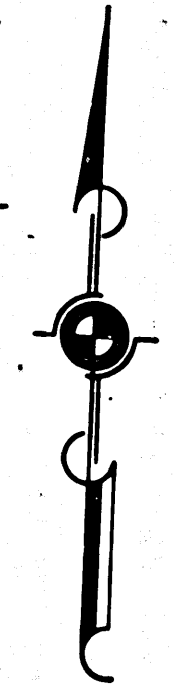
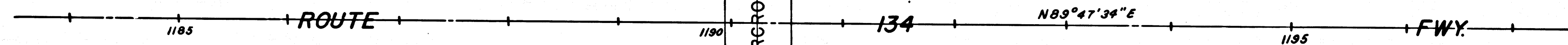


PARCEL 14



TRACT NO. 1645
 M.B. 20, 190-191

CITY OF GLENDALE



STATE OF CALIFORNIA
 TRANSPORTATION AGENCY
 DEPARTMENT OF PUBLIC WORKS
 DIVISION OF HIGHWAYS

PROPOSED RELINQUISHMENT

0 50 100 150 200

AREA TO BE RELINQUISHED SHOWN THUS [hatched box]

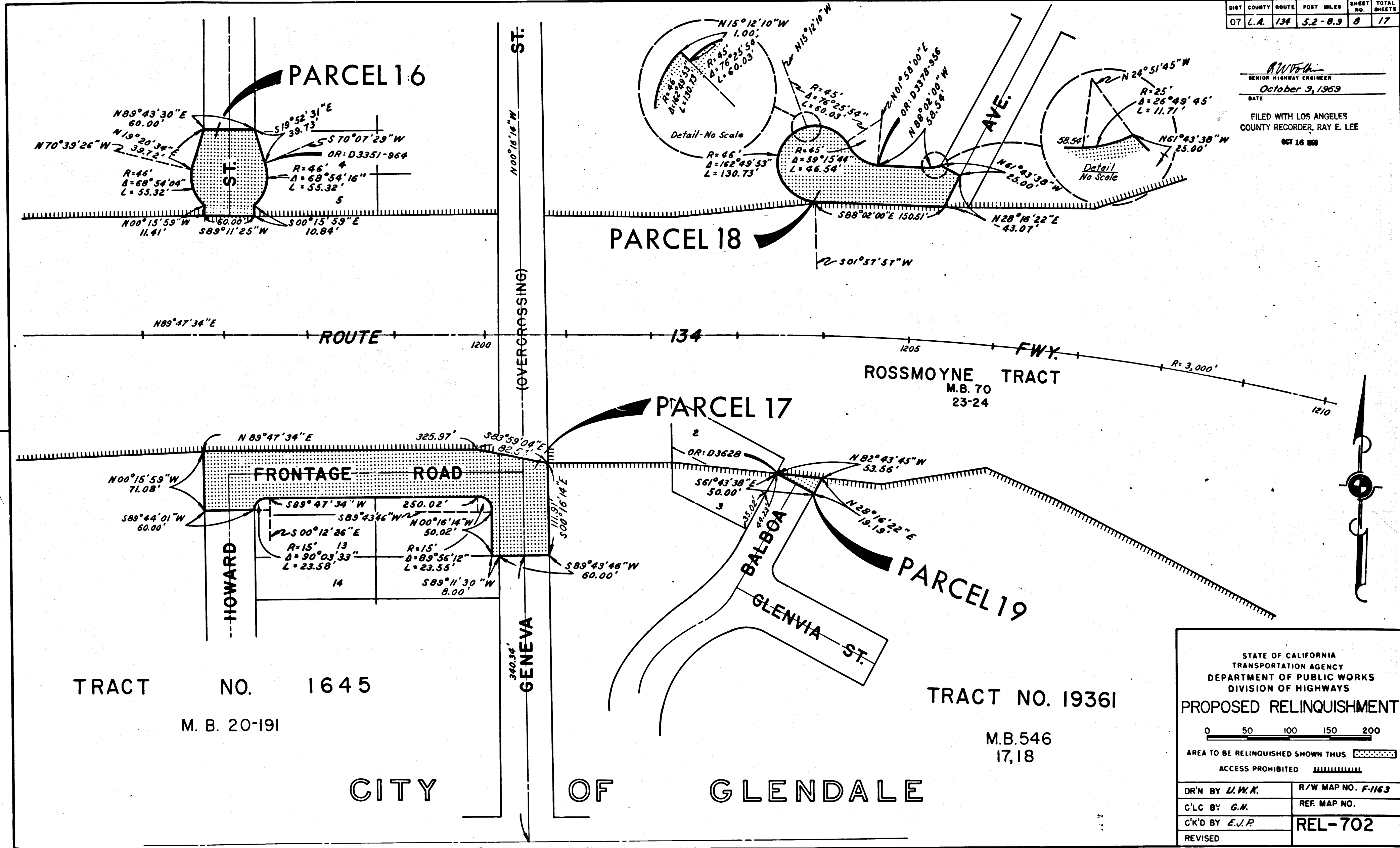
ACCESS PROHIBITED [hatched box]

DR'N BY <i>L.W.K.</i>	R/W MAP NO. <i>F-1163.1</i>
C'LC BY <i>G.H.</i>	REF. MAP NO.
C'K'D BY <i>E.J.P.</i>	REL-702
REVISED	

DIST	COUNTY	ROUTE	POST MILES	SHEET NO.	TOTAL SHEETS
07	L.A.	134	5.2-8.9	8	17

R.W. Fisher
 SENIOR HIGHWAY ENGINEER
 October 3, 1969
 DATE

FILED WITH LOS ANGELES
 COUNTY RECORDER, RAY E. LEE
 OCT 16 1969



TRACT NO. 1645
 M. B. 20-191

TRACT NO. 19361
 M.B. 546
 17,18

STATE OF CALIFORNIA
 TRANSPORTATION AGENCY
 DEPARTMENT OF PUBLIC WORKS
 DIVISION OF HIGHWAYS

PROPOSED RELINQUISHMENT

0 50 100 150 200

AREA TO BE RELINQUISHED SHOWN THUS [stippled pattern]

ACCESS PROHIBITED [hatched pattern]

DR'N BY <i>J.W.K.</i>	R/W MAP NO. <i>F-1163</i>
C'LC BY <i>G.M.</i>	REF. MAP NO.
C'K'D BY <i>E.J.P.</i>	REL-702
REVISED	

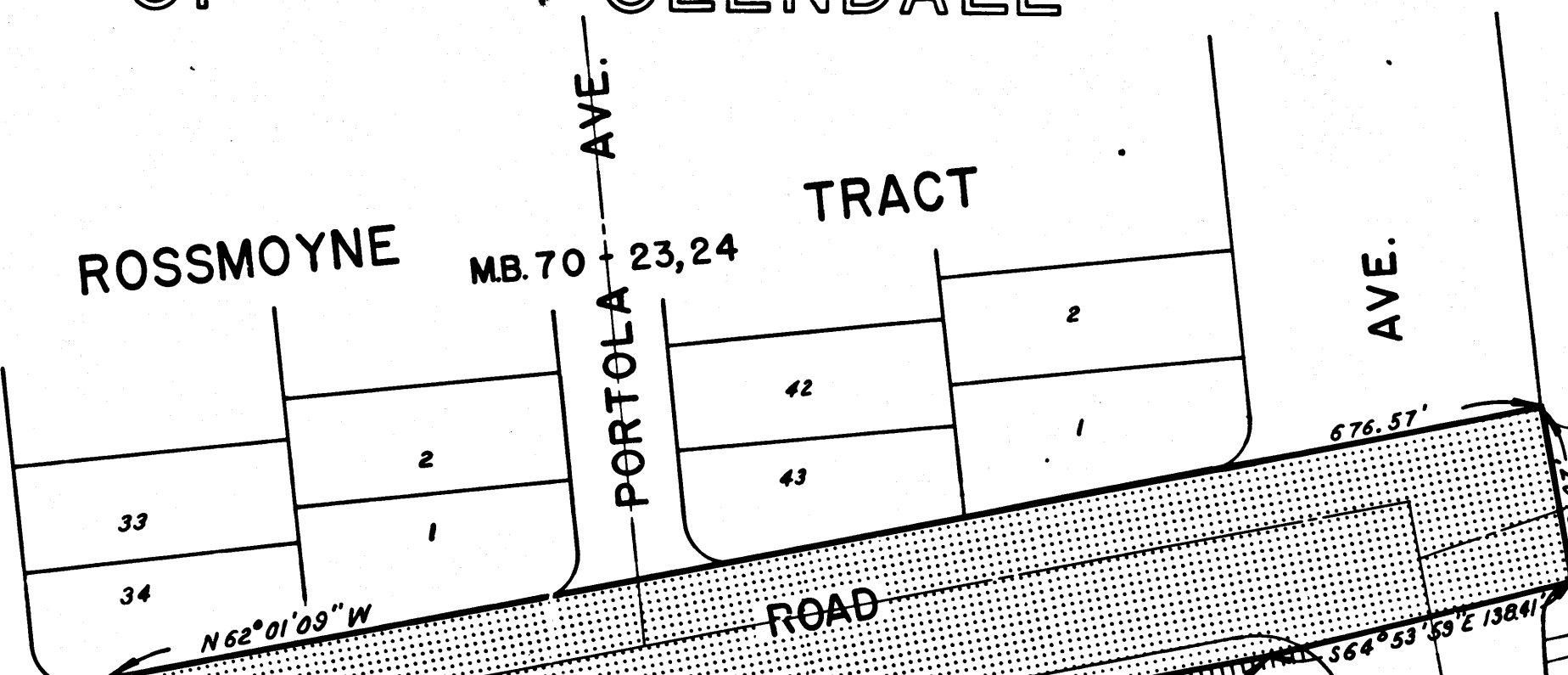
COUNTY ENGINEER'S COPY

DIST	COUNTY	ROUTE	POST MILES	SHEET NO.	TOTAL SHEETS
07	L.A.	134	5.2-8.9	9	17

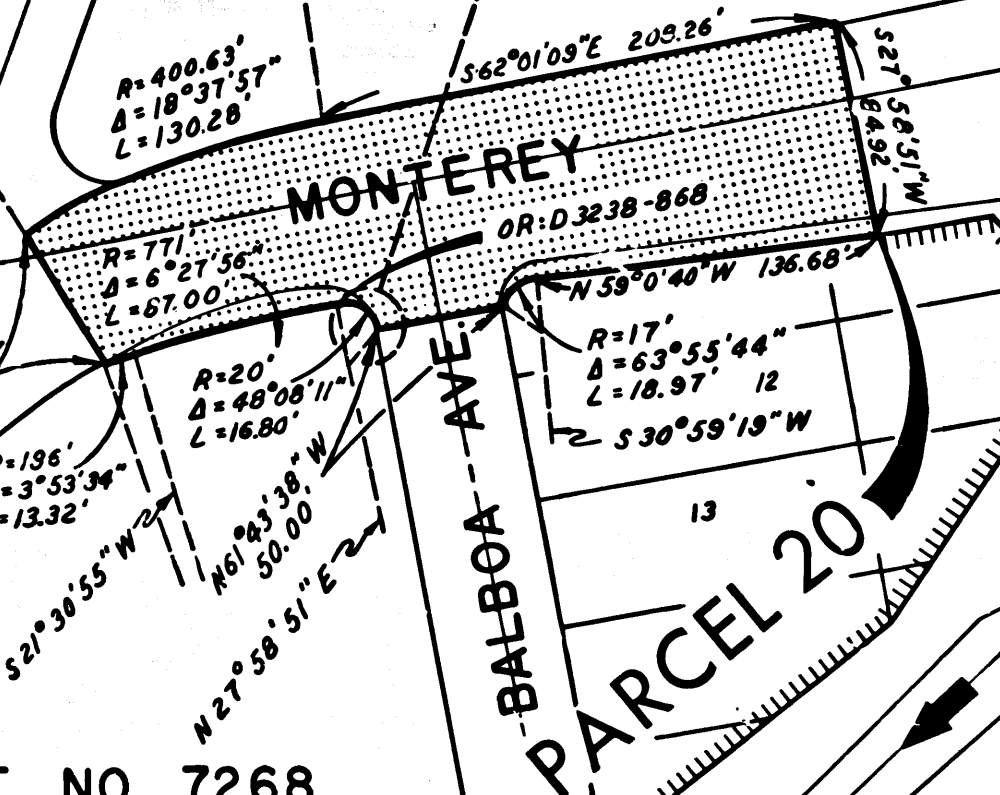
CITY OF GLENDALE

R.W. Kelly
 SENIOR HIGHWAY ENGINEER
 October 9, 1969
 DATE
 FILED WITH LOS ANGELES COUNTY RECORDER, RAY E LEE
 OCT 16 1969

ROSSMOYNE TRACT
 MB. 70 23, 24



TRACT NO. 7268
 M.B. 90-56



STATE OF CALIFORNIA
 TRANSPORTATION AGENCY
 DEPARTMENT OF PUBLIC WORKS
 DIVISION OF HIGHWAYS

PROPOSED RELINQUISHMENT

0 50 100 150 200

AREA TO BE RELINQUISHED SHOWN, THUS [Stippled Area]

ACCESS PROHIBITED [Hatched Area]

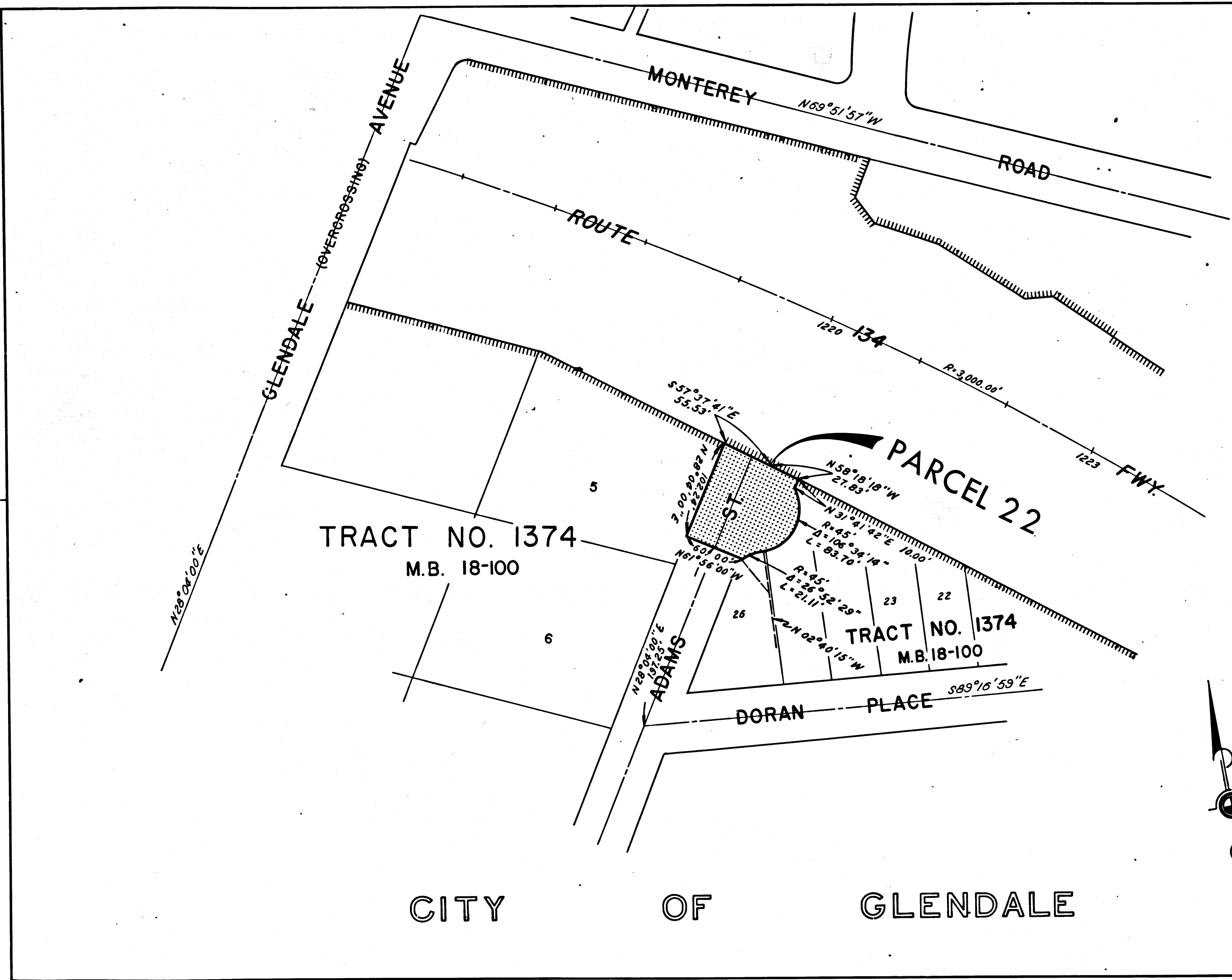
DR'N BY <i>L.W.K.</i>	R/W MAP NO. 1/63.1
C'LC BY <i>G.H.</i>	REF. MAP NO.
C'K'D BY <i>E.J.P.</i>	REL-702
REVISED	

COUNTY ENGINEER'S COPY

DIST	COUNTY	ROUTE	POST MILES	SHEET NO.	TOTAL SHEETS
07	L.A.	134	5.2-8.9	10	17

B.W.K.
 SENIOR HIGHWAY ENGINEER
 DATE October 9, 1969

FILED WITH LOS ANGELES
 COUNTY RECORDER, RAY E. LEE
 OCT 16 1969



STATE OF CALIFORNIA
 TRANSPORTATION AGENCY
 DEPARTMENT OF PUBLIC WORKS
 DIVISION OF HIGHWAYS

PROPOSED RELINQUISHMENT

0 50 100 150 200

AREA TO BE RELINQUISHED SHOWN THUS

ACCESS PROHIBITED

DR'N BY <i>L.I.W.K.</i>	R/W MAP NO. <i>F1163.1</i>
C'LC BY <i>G.H.</i>	REF. MAP NO.
C'K'D BY <i>E.J.P.</i>	REL-702
REVISED	

CITY OF GLENDALE

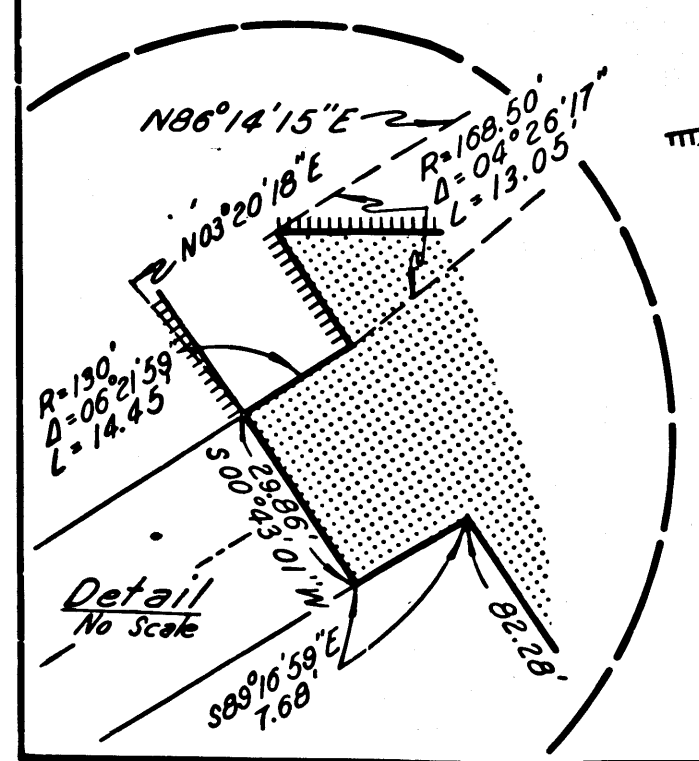
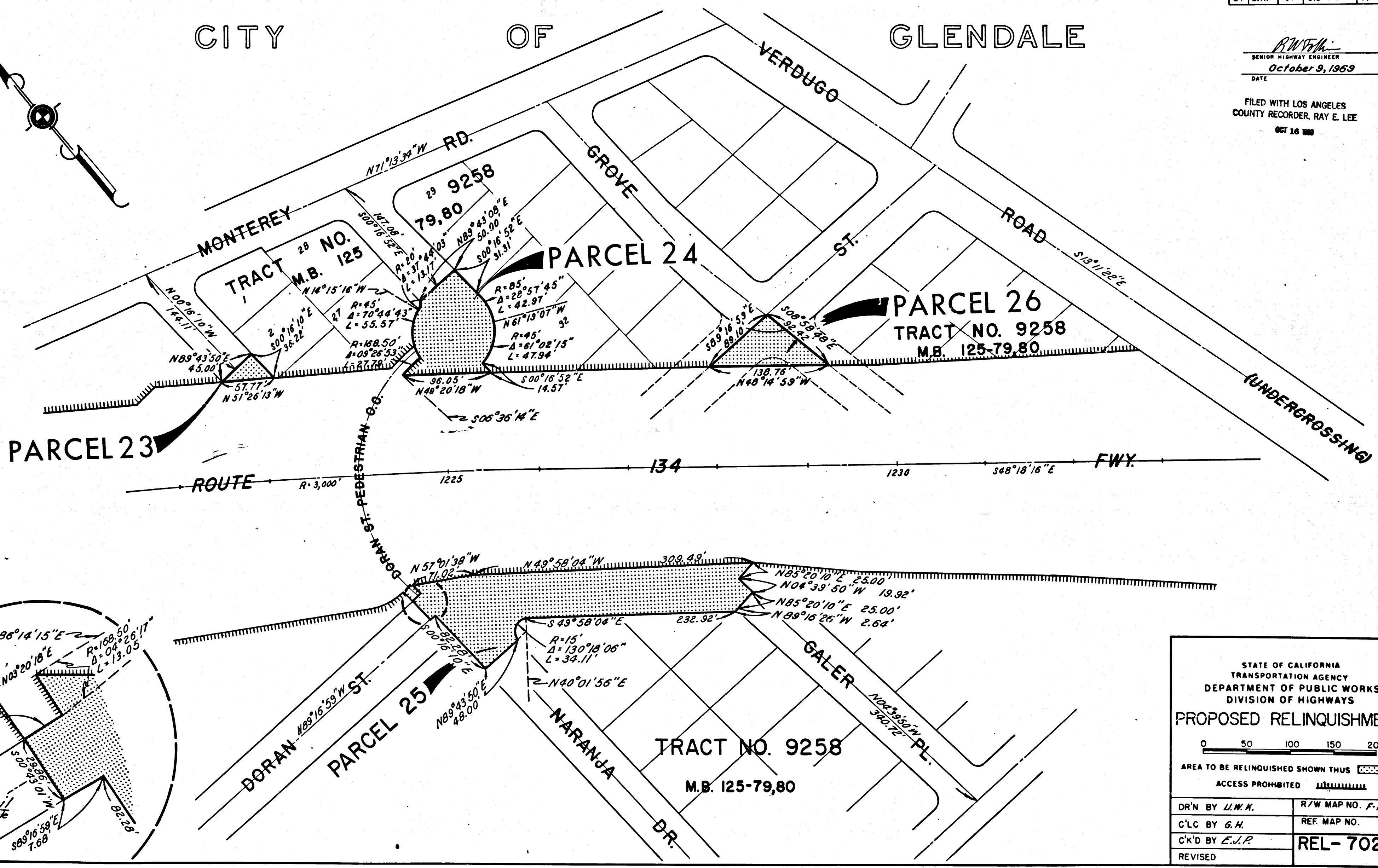
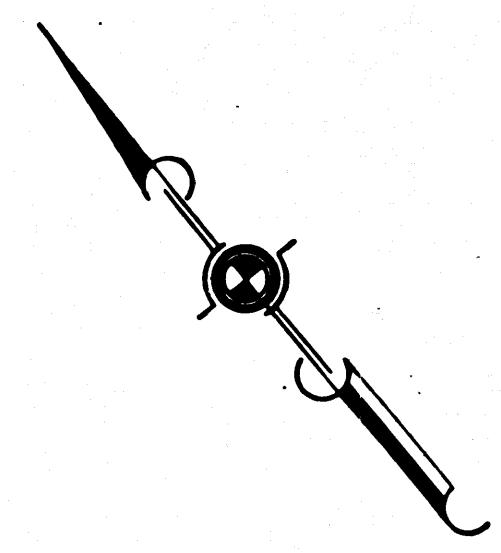
COUNTY ENGINEER'S COPY

DIST	COUNTY	ROUTE	POST MILES	SHEET NO.	TOTAL SHEETS
07	L.A.	134	5.2-8.3	11	17

CITY OF GLENDALE

R.W.F.M.
 SENIOR HIGHWAY ENGINEER
 October 9, 1969
 DATE

FILED WITH LOS ANGELES
 COUNTY RECORDER, RAY E. LEE
 OCT 16 1969



STATE OF CALIFORNIA
 TRANSPORTATION AGENCY
 DEPARTMENT OF PUBLIC WORKS
 DIVISION OF HIGHWAYS

PROPOSED RELINQUISHMENT

0 50 100 150 200

AREA TO BE RELINQUISHED SHOWN THUS

ACCESS PROHIBITED

DR'N BY <i>J.W.K.</i>	R/W MAP NO. <i>F-1164</i>
C'LC BY <i>G.H.</i>	REF. MAP NO.
C'K'D BY <i>E.J.P.</i>	REL-702
REVISED	

COUNTY ENGINEER'S COPY

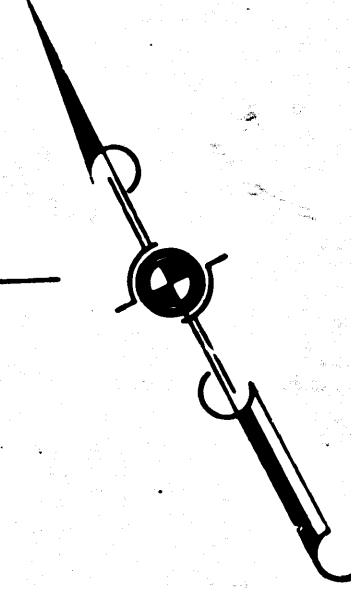
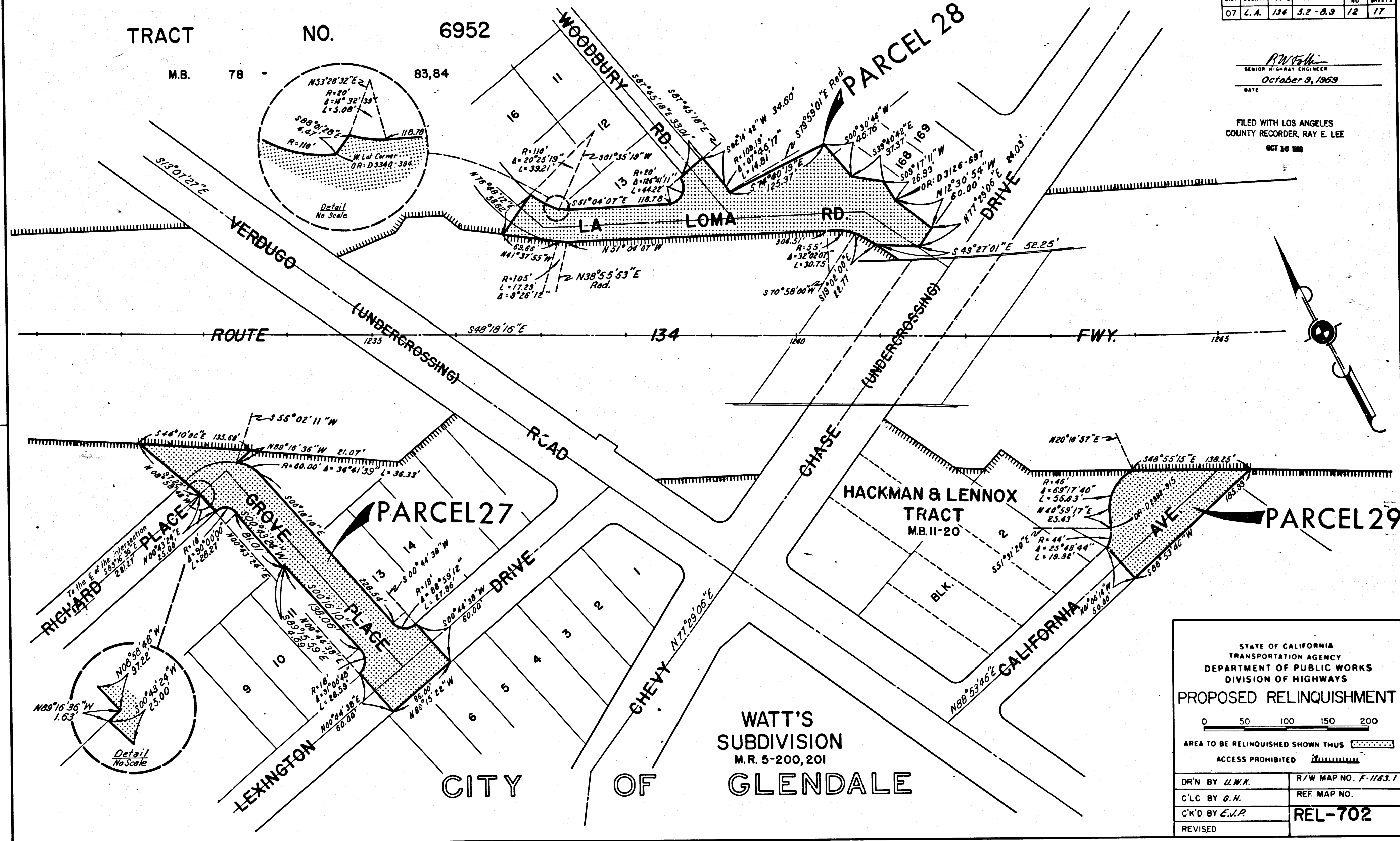
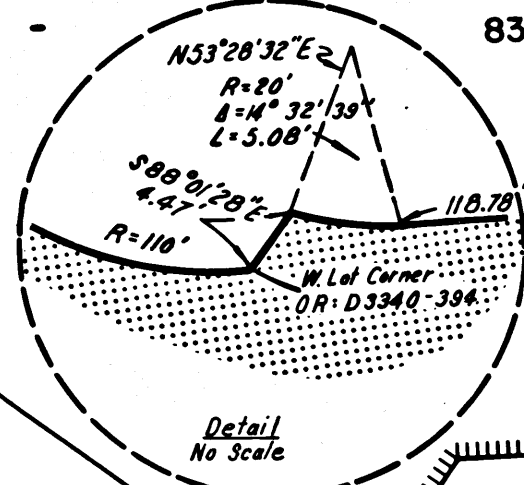
DIST	COUNTY	ROUTE	POST MILES	SHEET NO.	TOTAL SHEETS
07	L.A.	134	5.2-8.9	12	17

R.W. Felt
 SENIOR HIGHWAY ENGINEER
 October 9, 1969
 DATE

FILED WITH LOS ANGELES
 COUNTY RECORDER, RAY E. LEE
 OCT 16 1969

TRACT NO. 6952

M.B. 78 - 83.84



STATE OF CALIFORNIA
 TRANSPORTATION AGENCY
 DEPARTMENT OF PUBLIC WORKS
 DIVISION OF HIGHWAYS

PROPOSED RELINQUISHMENT

0 50 100 150 200

AREA TO BE RELINQUISHED SHOWN THUS

ACCESS PROHIBITED

DR'N BY <i>L.W.K.</i>	R/W MAP NO. <i>F-1163.1</i>
C'LC BY <i>G.H.</i>	REF. MAP NO.
C'K'D BY <i>E.V.P.</i>	REL-702
REVISED	

COUNTY ENGINEER'S COPY

DIST	COUNTY	ROUTE	POST MILES	SHEET NO.	TOTAL SHEETS
07	L.A.	134	5.2-8.9	13	17

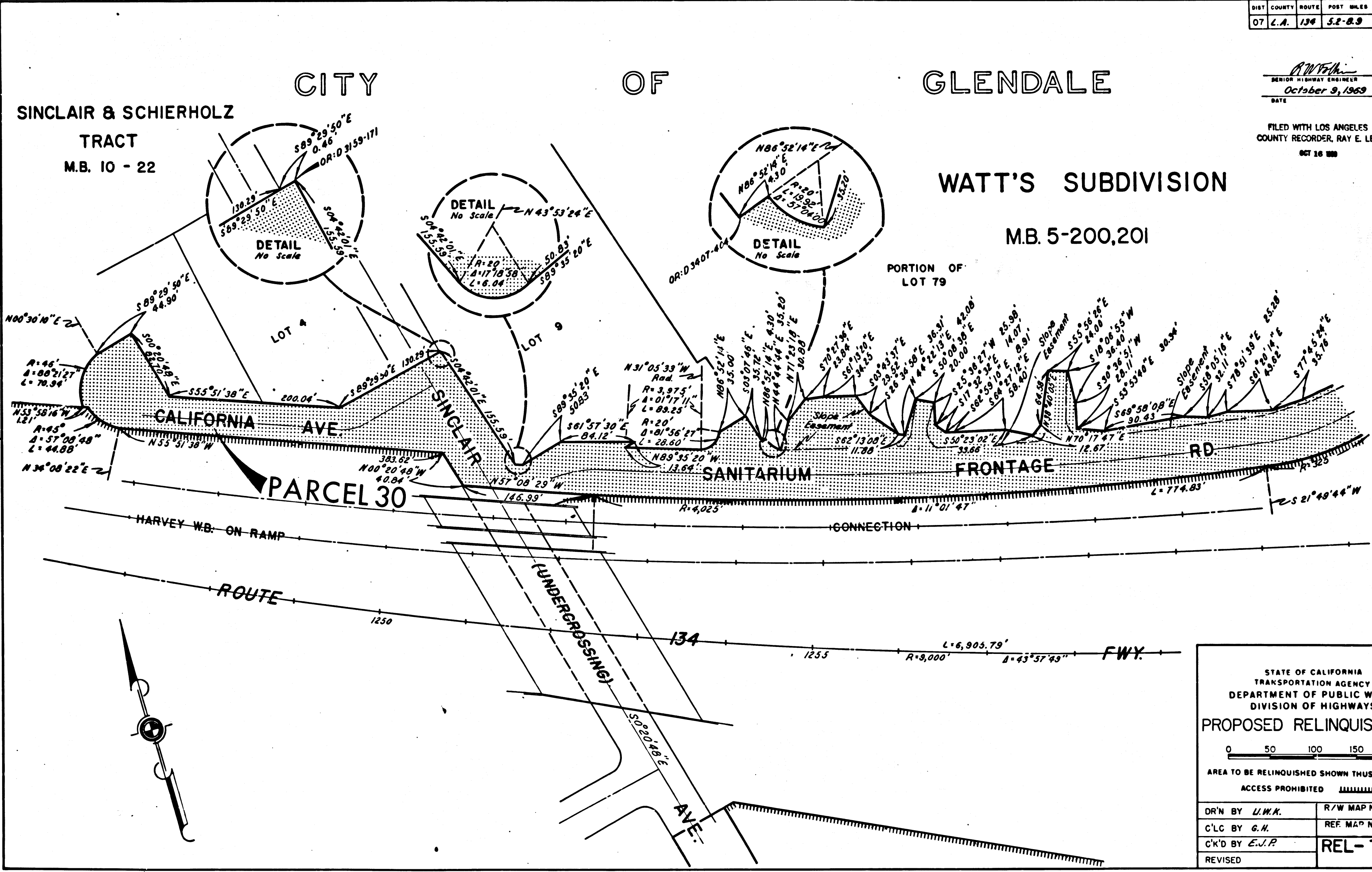
CITY OF GLENDALE

SINCLAIR & SCHIERHOLZ TRACT
M.B. 10 - 22

WATT'S SUBDIVISION
M.B. 5-200,201

R.W. Felton
SENIOR HIGHWAY ENGINEER
October 9, 1969
DATE

FILED WITH LOS ANGELES COUNTY RECORDER, RAY E. LEE
OCT 16 1969



STATE OF CALIFORNIA
TRANSPORTATION AGENCY
DEPARTMENT OF PUBLIC WORKS
DIVISION OF HIGHWAYS

PROPOSED RELINQUISHMENT

0 50 100 150 200

AREA TO BE RELINQUISHED SHOWN THUS

ACCESS PROHIBITED

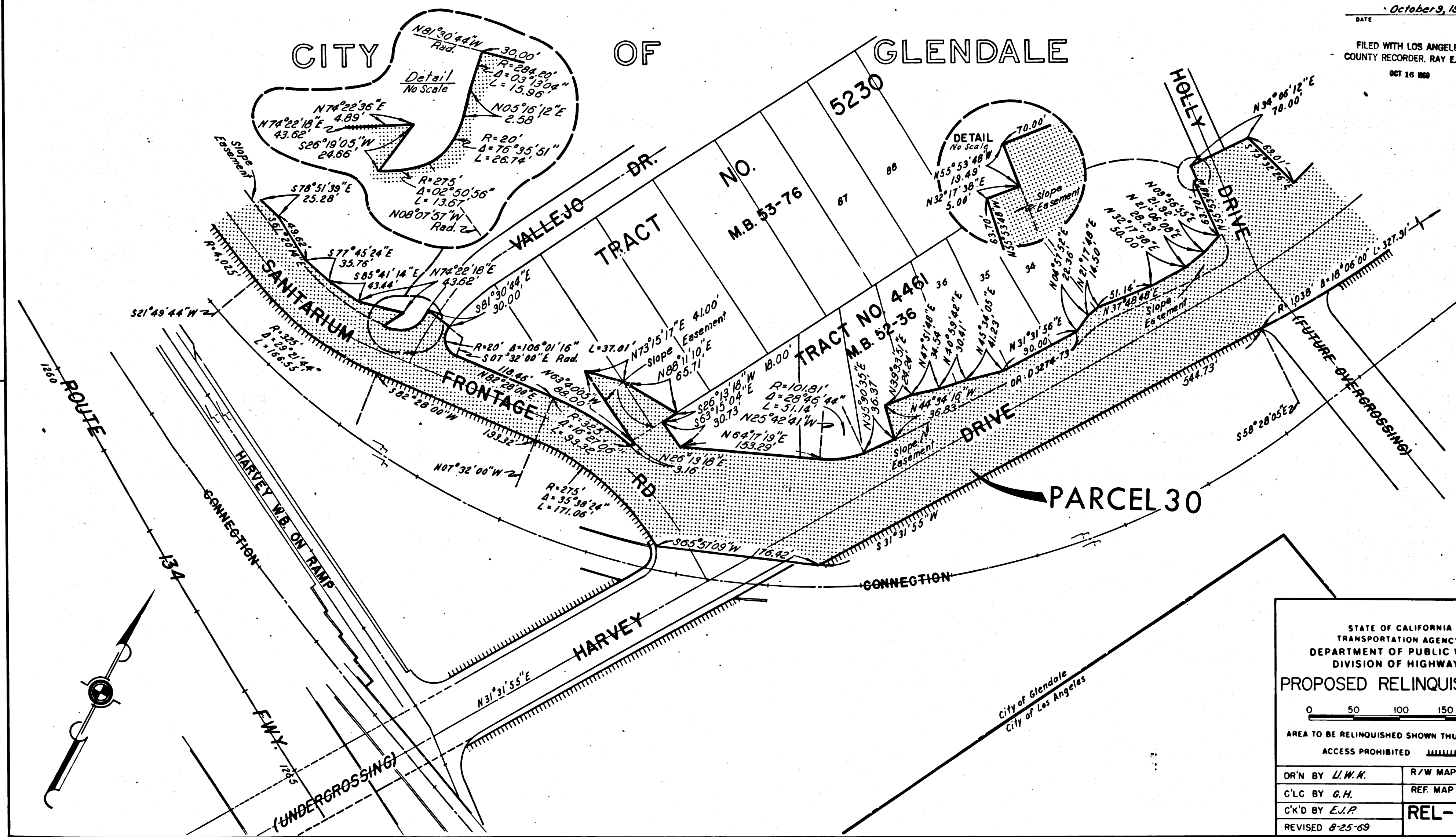
DR'N BY <i>L.W.A.</i>	R/W MAP NO. <i>F-1164</i>
C'LC BY <i>G.H.</i>	REF MAP NO.
C'K'D BY <i>E.J.P.</i>	REL-702
REVISED	

DIST	COUNTY	ROUTE	POST MILES	SHEET NO.	TOTAL SHEETS
07	L.A.	134	5.2-8.9	14	17

R.W. Williams
 SENIOR HIGHWAY ENGINEER
 DATE: October 9, 1969

FILED WITH LOS ANGELES COUNTY RECORDER, RAY E. LEE
 OCT 16 1969

CITY OF GLENDALE



STATE OF CALIFORNIA
 TRANSPORTATION AGENCY
 DEPARTMENT OF PUBLIC WORKS
 DIVISION OF HIGHWAYS

PROPOSED RELINQUISHMENT

0 50 100 150 200

AREA TO BE RELINQUISHED SHOWN THUS

ACCESS PROHIBITED

DR'N BY <i>L.W.K.</i>	R/W MAP NO. <i>F-1164</i>
C'LC BY <i>G.H.</i>	REF. MAP NO.
C'K'D BY <i>E.J.P.</i>	REL-702
REVISED <i>8-25-69</i>	

COUNTY ENGINEER'S COPY

DIST	COUNTY	ROUTE	POST MILES	SHEET NO.	TOTAL SHEETS
07	L.A.	134	5.2-8.9	15	17

CITY OF GLENDALE

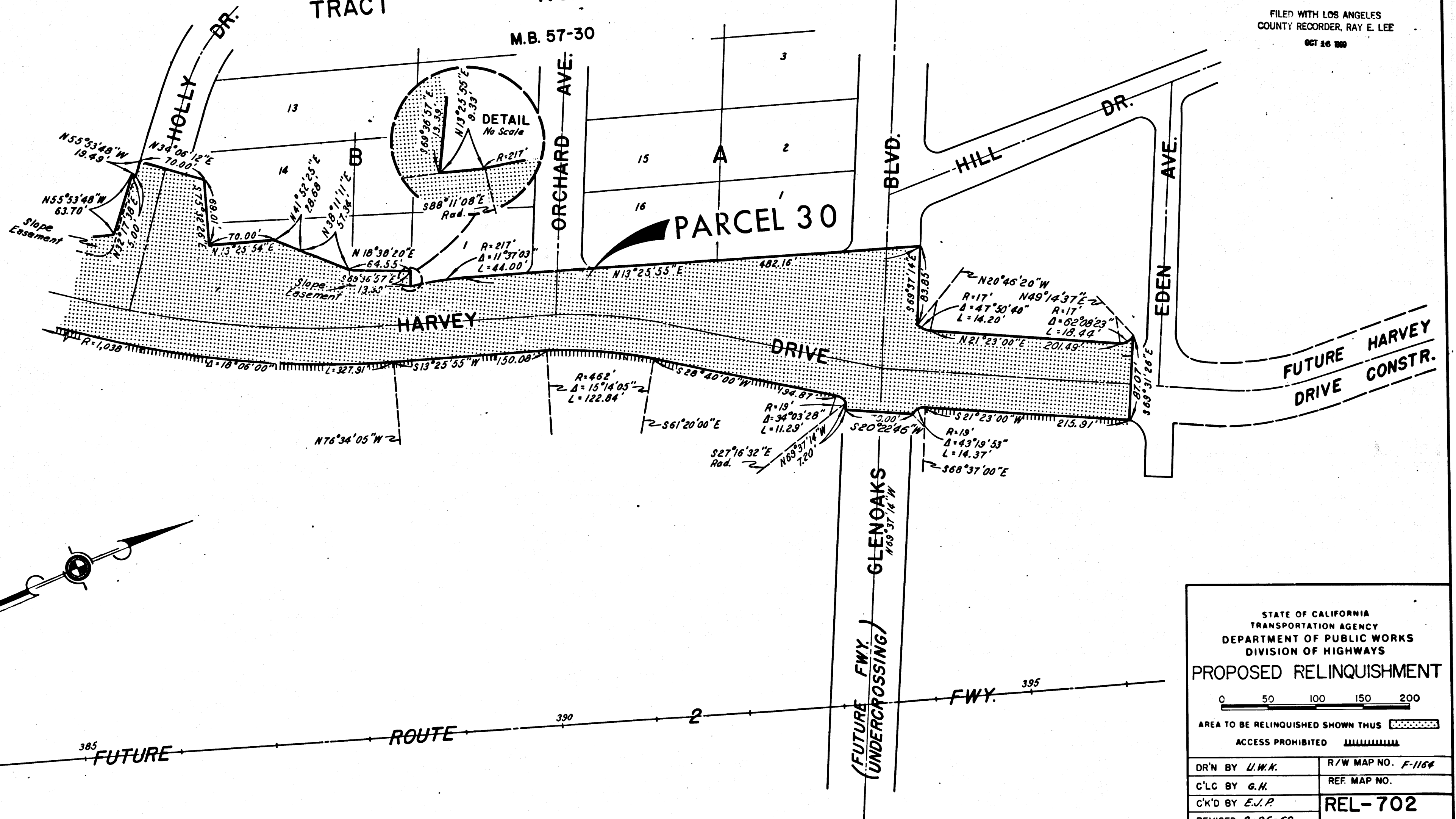
TRACT NO. 5106

M.B. 57-30

TRACT

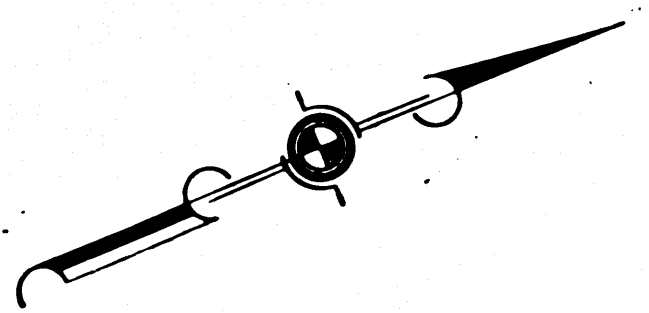
ORCHARD AVE.

PARCEL 30



R.W.F.H.
SENIOR HIGHWAY ENGINEER
October 9, 1969
DATE

FILED WITH LOS ANGELES COUNTY RECORDER, RAY E. LEE
OCT 26 1969



STATE OF CALIFORNIA
TRANSPORTATION AGENCY
DEPARTMENT OF PUBLIC WORKS
DIVISION OF HIGHWAYS

PROPOSED RELINQUISHMENT

0 50 100 150 200

AREA TO BE RELINQUISHED SHOWN THUS [Hatched Pattern]

ACCESS PROHIBITED [Wavy Line Pattern]

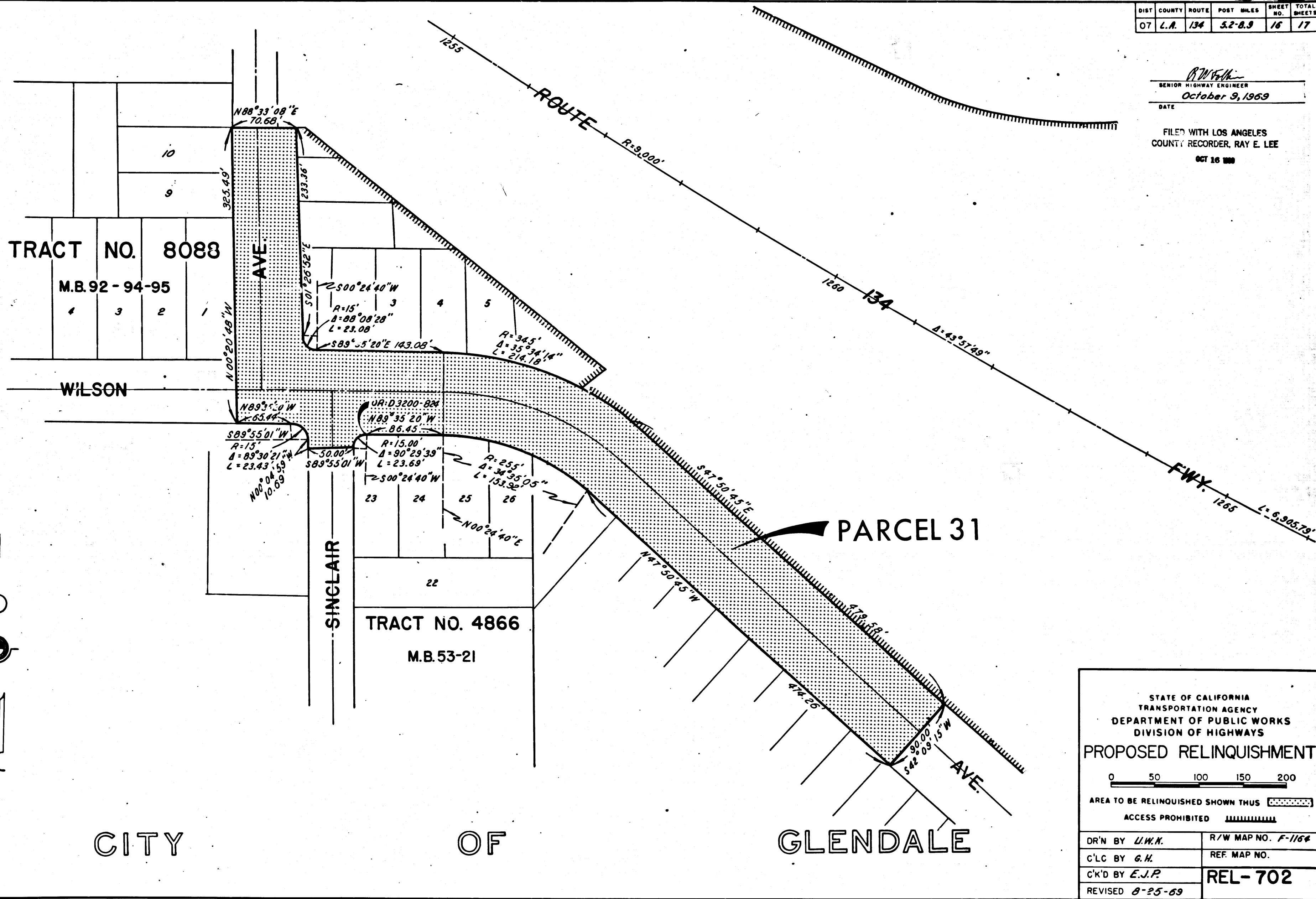
DR'N BY <i>U.W.K.</i>	R/W MAP NO. <i>F-1164</i>
C'LC BY <i>G.H.</i>	REF. MAP NO.
C'K'D BY <i>E.V.P.</i>	REL-702
REVISED <i>8-25-69</i>	

COUNTY ENGINEER'S COPY

DIST	COUNTY	ROUTE	POST MILES	SHEET NO.	TOTAL SHEETS
07	L.A.	134	5.2-8.9	16	17

R.W.V.K.
 SENIOR HIGHWAY ENGINEER
 October 9, 1969
 DATE

FILED WITH LOS ANGELES
 COUNTY RECORDER, RAY E. LEE
 OCT 16 1969



STATE OF CALIFORNIA
 TRANSPORTATION AGENCY
 DEPARTMENT OF PUBLIC WORKS
 DIVISION OF HIGHWAYS

PROPOSED RELINQUISHMENT

0 50 100 150 200

AREA TO BE RELINQUISHED SHOWN THUS

ACCESS PROHIBITED

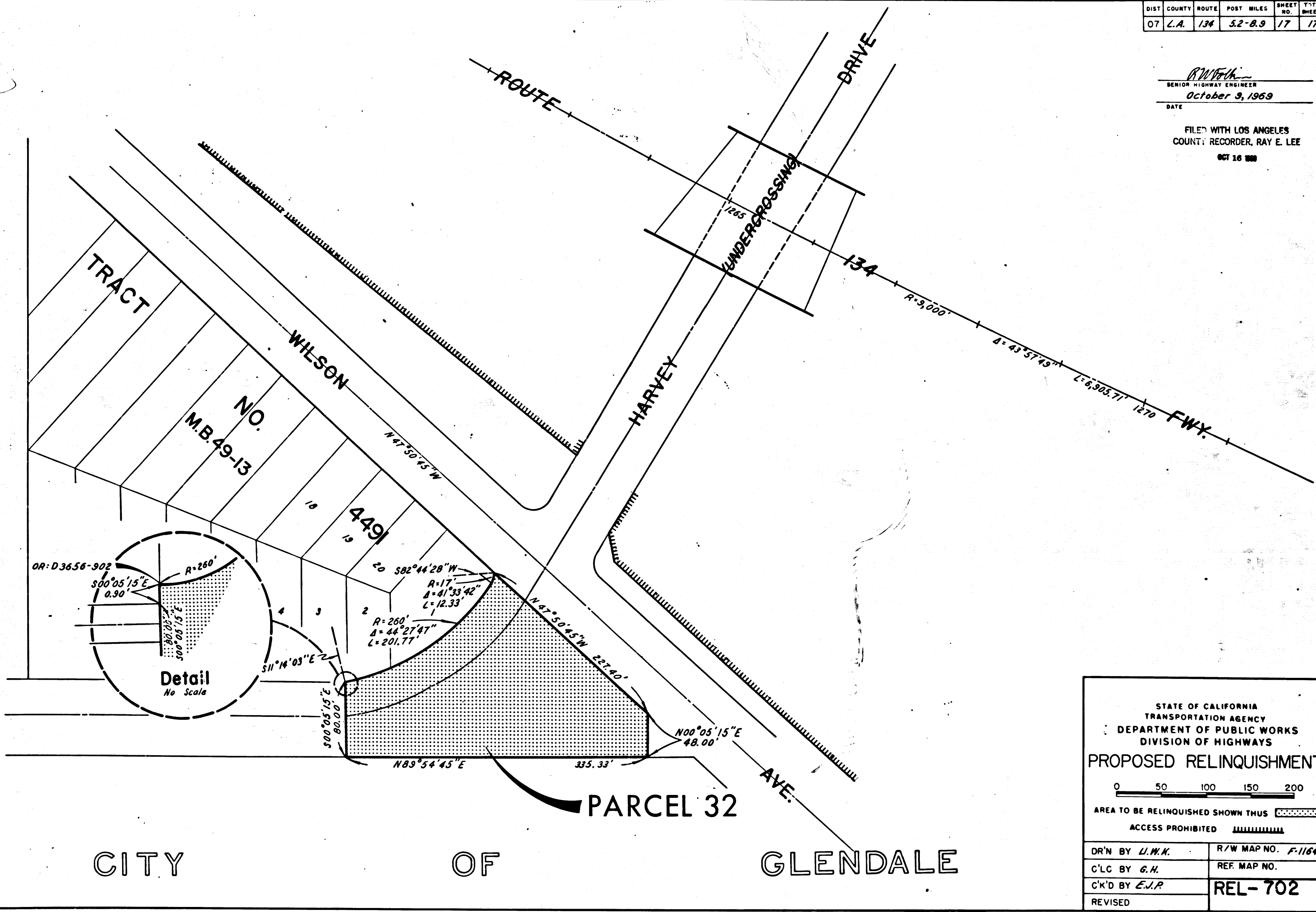
DR'N BY <i>L.W.K.</i>	R/W MAP NO. <i>F-1164</i>
C'LC BY <i>G.H.</i>	REF. MAP NO.
C'K'D BY <i>E.J.P.</i>	REL-702
REVISED <i>8-25-69</i>	

COUNTY ENGINEER'S COPY

DIST	COUNTY	ROUTE	POST MILES	SHEET NO.	TOTAL SHEETS
07	L.A.	134	5.2-8.9	17	17

R.W.F.H.
 SENIOR HIGHWAY ENGINEER
 October 9, 1969
 DATE

FILED WITH LOS ANGELES
 COUNTY RECORDER, RAY E. LEE
 OCT 16 1969



STATE OF CALIFORNIA
 TRANSPORTATION AGENCY
 DEPARTMENT OF PUBLIC WORKS
 DIVISION OF HIGHWAYS

PROPOSED RELINQUISHMENT

0 50 100 150 200

AREA TO BE RELINQUISHED SHOWN THUS

ACCESS PROHIBITED

DR'N BY <i>L.W.H.</i>	R/W MAP NO. <i>F-1164</i>
C'LC BY <i>G.H.</i>	REF. MAP NO.
C'K'D BY <i>E.J.P.</i>	REL-702
REVISED	

CITY OF GLENDALE

COUNTY ENGINEER'S COPY