

DIST	COUNTY	ROUTE	POST MILES	SHEET NO.	TOTAL SHEETS
07	C.A.	210	14/14.9	1	9

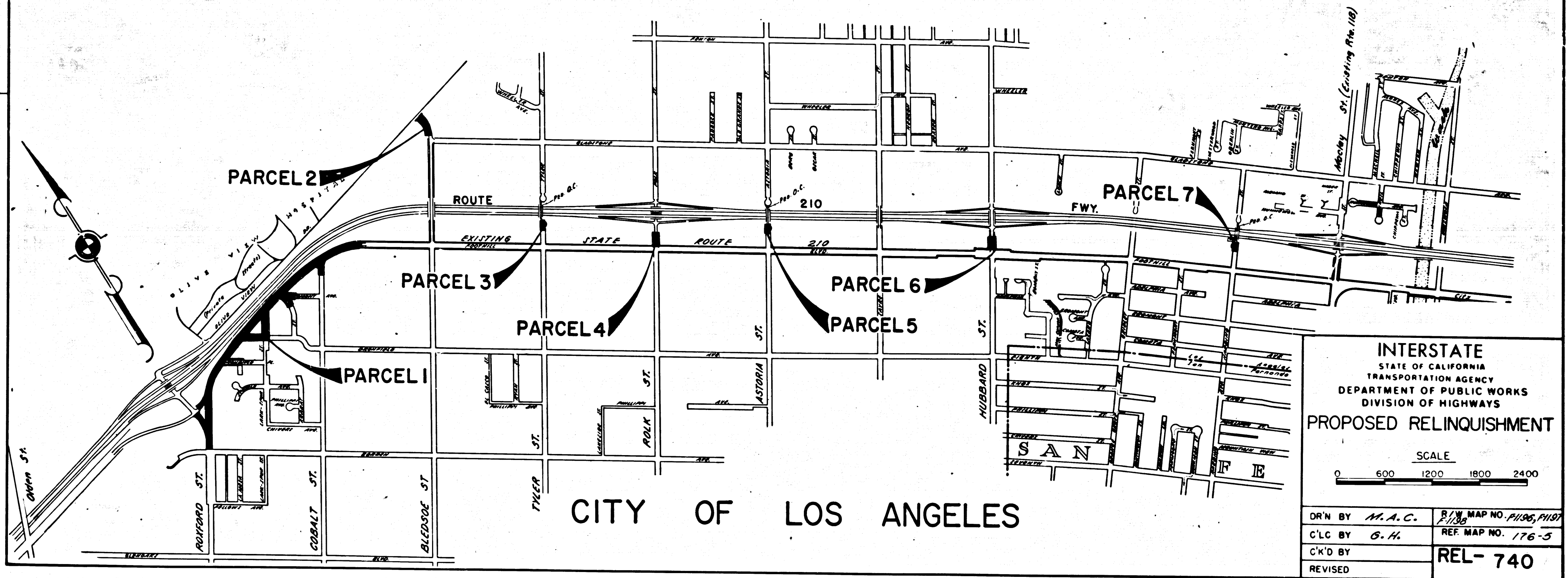
STATE OF CALIFORNIA
 TRANSPORTATION AGENCY
 DEPARTMENT OF PUBLIC WORKS
 DIVISION OF HIGHWAYS

Ad. H. Hill
 COUNTY DISTRICT ENGINEER
 Nov. 20, 1969
 DATE

RIGHT OF WAY MAPS OF
STATE HIGHWAY
 In the City of Los Angeles on Route 210
 between Olden St. and Maclay St.
 (existing Rte. 118)

2906

FILED
 AT REQUEST OF
 DEPT. OF PUBLIC WORKS
 NOV. 24, 1969
 20 MIN. PAST 1 P.M.
 IN BOOK 8
 AT PAGE 63
 OF STATE HIGHWAY MAPS
 LOS ANGELES COUNTY, CALIF.
 RAY E. LEE
 COUNTY RECORDER
 BY *[Signature]* Free



INTERSTATE
 STATE OF CALIFORNIA
 TRANSPORTATION AGENCY
 DEPARTMENT OF PUBLIC WORKS
 DIVISION OF HIGHWAYS
PROPOSED RELINQUISHMENT

SCALE
 0 600 1200 1800 2400

DR'N BY	M.A.C.	R/W MAP NO.	P196, P197
C'LC BY	G.H.	REF MAP NO.	176-5
C'K'D BY			REL-740
REVISED			

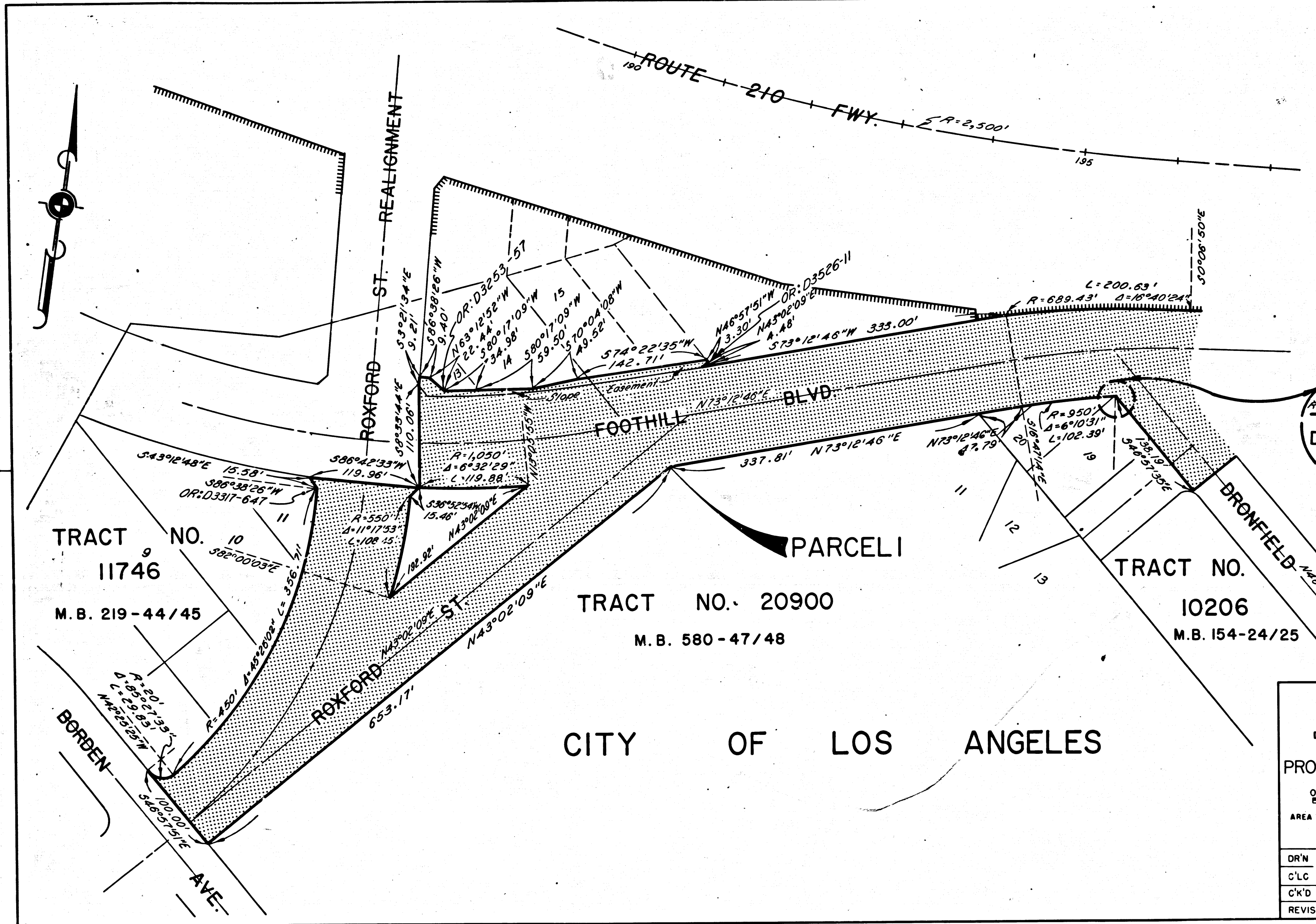
8/65-71 120

COUNTY ENGINEER'S COPY

DIST	COUNTY	ROUTE	POST MILES	SHEET NO.	TOTAL SHEETS
07	C.A.	210	1.4/4.9	2	9

R.W. Felton
 SENIOR HIGHWAY ENGINEER
 Nov 20, 1969
 DATE

FILED WITH LOS ANGELES
 COUNTY RECORDER, RAY E. LEE
 NOV 28 1969



CITY OF LOS ANGELES

INTERSTATE
 STATE OF CALIFORNIA
 TRANSPORTATION AGENCY
 DEPARTMENT OF PUBLIC WORKS
 DIVISION OF HIGHWAYS

PROPOSED RELINQUISHMENT

0 50 100 150 200

AREA TO BE RELINQUISHED SHOWN THUS

ACCESS PROHIBITED

DR'N BY	M.A.C.	R/W MAP NO.	F-1196-5
C'LC BY	G.H.	REF. MAP NO.	176-5
C'k'D BY	G.D.W.	REL-	740
REVISED			

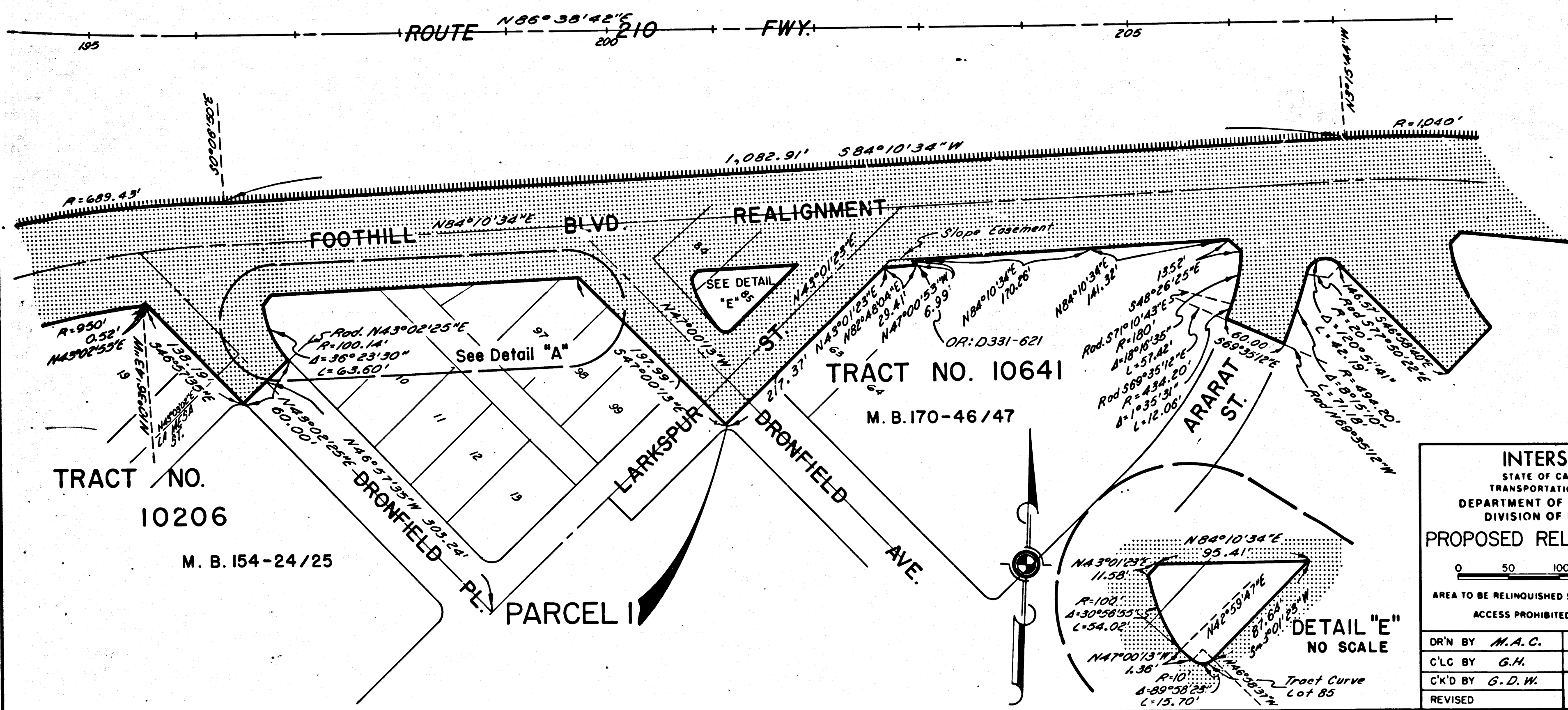
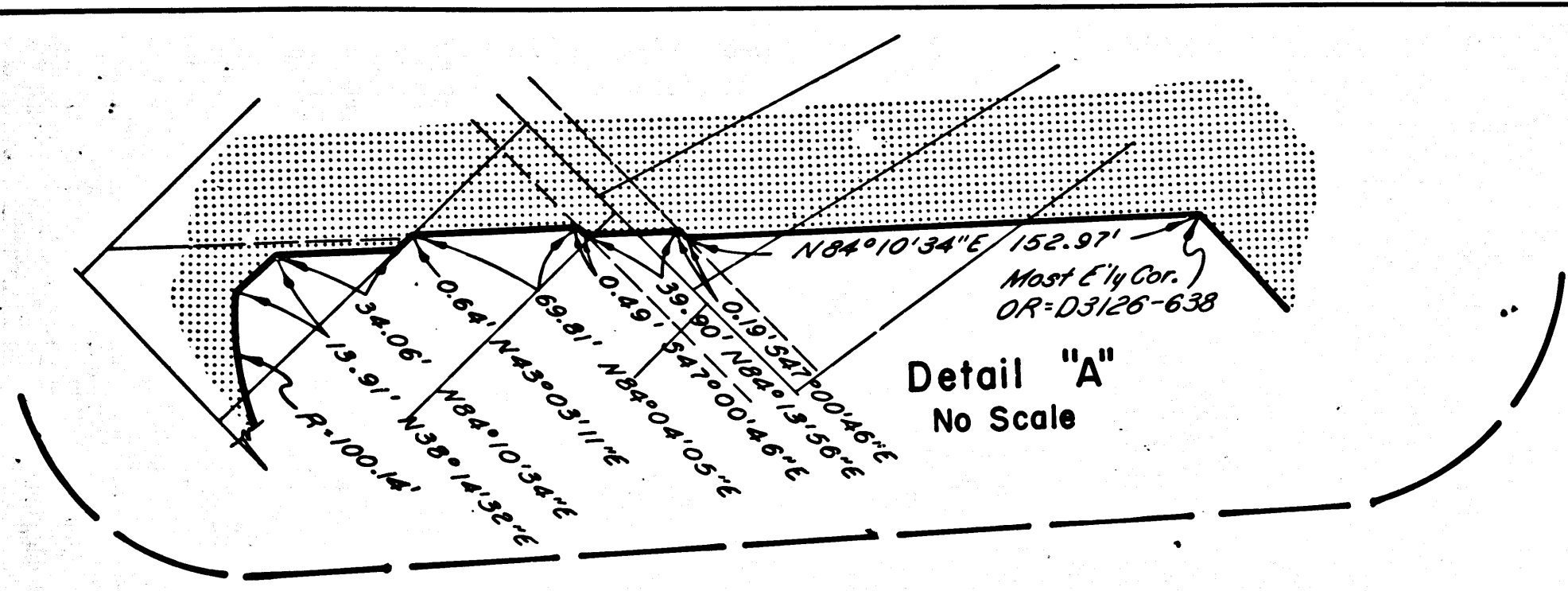
COUNTY ENGINEER'S COPY

DIST	COUNTY	ROUTE	POST MILES	SHEET NO.	TOTAL SHEETS
07	L.A.	210	1.4/4.9	3	9

CITY OF LOS ANGELES

R.M. Lee
 SENIOR HIGHWAY ENGINEER
 Nov. 20, 1969
 DATE

FILED WITH LOS ANGELES
 COUNTY RECORDER, RAY E. LEE
 NOV 26 1969



INTERSTATE
 STATE OF CALIFORNIA
 TRANSPORTATION AGENCY
 DEPARTMENT OF PUBLIC WORKS
 DIVISION OF HIGHWAYS

PROPOSED RELINQUISHMENT

0 50 100 150 200

AREA TO BE RELINQUISHED SHOWN THUS

ACCESS PROHIBITED

DR'N BY M.A.C.	R/W MAP NO. F-1196-7
C'LG BY G.H.	REF. MAP NO. 176-5
C'K'D BY G.D.W.	REL-740
REVISED	

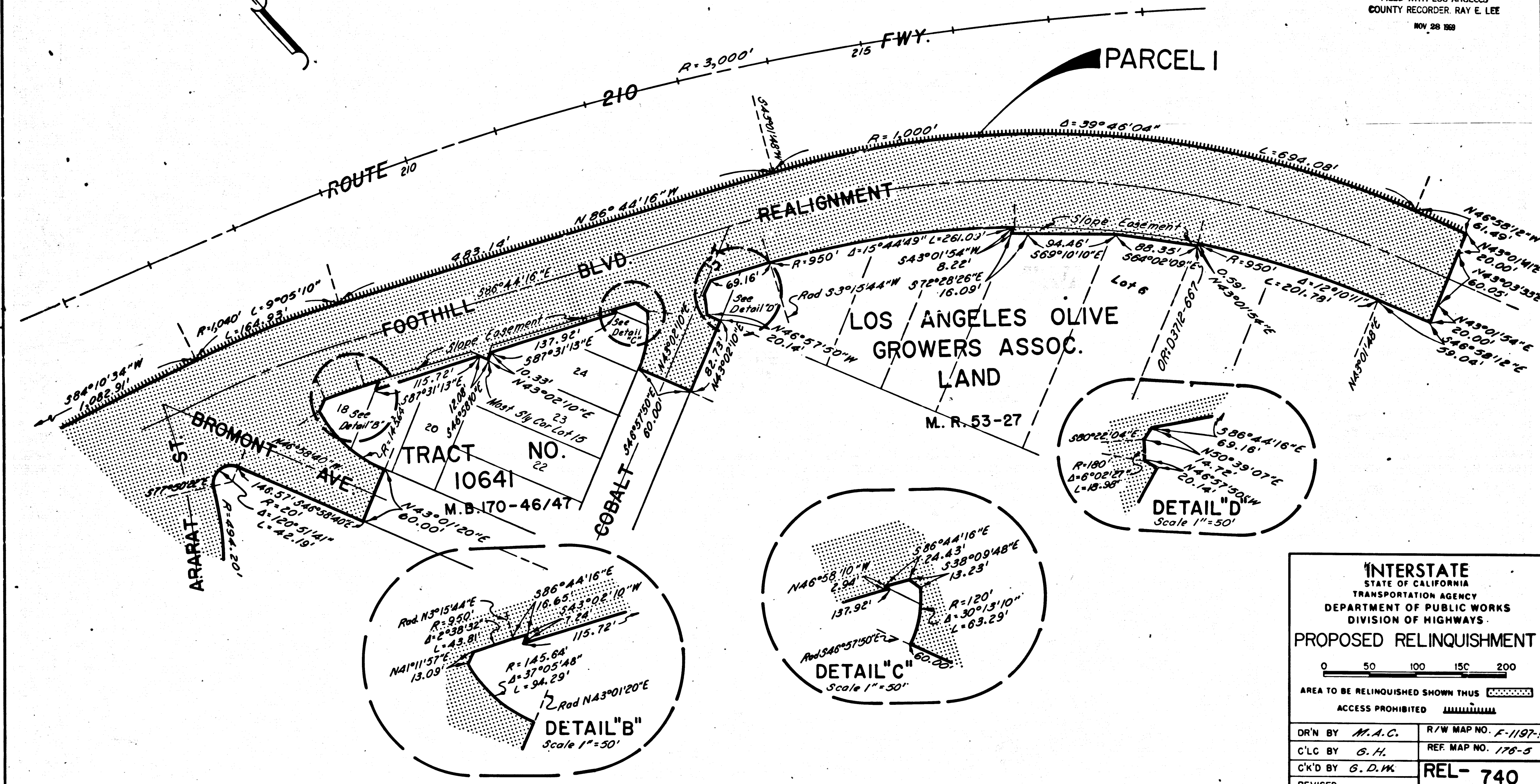
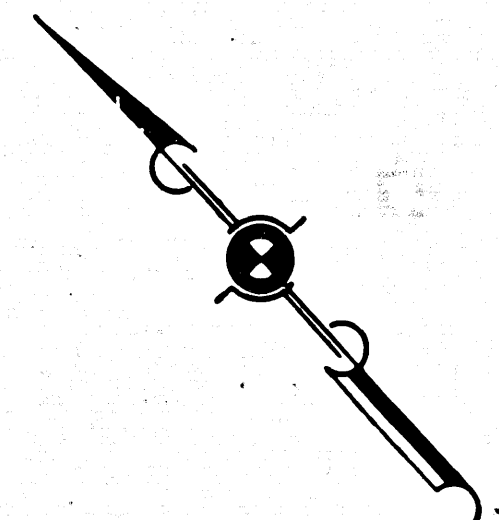
COUNTY ENGINEER'S COPY

DIST	COUNTY	ROUTE	POST MILES	SHEET NO.	TOTAL SHEETS
07	L.A.	210	1.4/4.9	4	9

CITY OF LOS ANGELES

R.W. Felt
 SENIOR HIGHWAY ENGINEER
 Nov. 20, 1969
 DATE

FILED WITH LOS ANGELES
 COUNTY RECORDER RAY E. LEE
 NOV 28 1969



INTERSTATE
 STATE OF CALIFORNIA
 TRANSPORTATION AGENCY
 DEPARTMENT OF PUBLIC WORKS
 DIVISION OF HIGHWAYS

PROPOSED RELINQUISHMENT

0 50 100 150 200

AREA TO BE RELINQUISHED SHOWN THUS

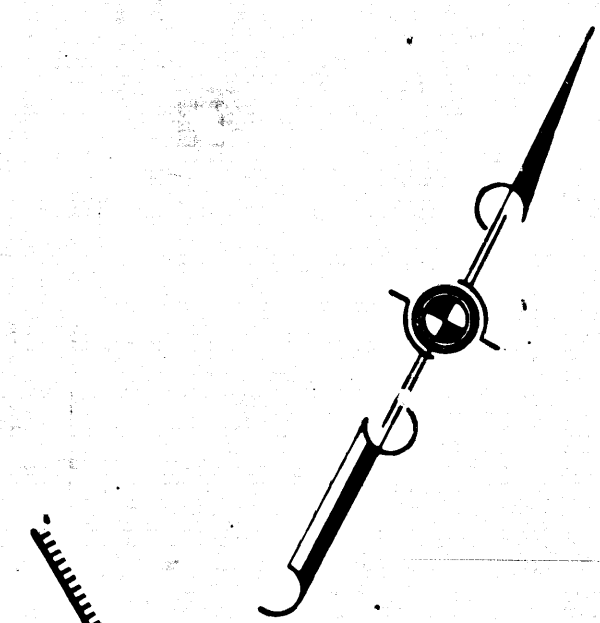
ACCESS PROHIBITED

DR'N BY <i>M.A.C.</i>	R/W MAP NO. <i>F-1197-1</i>
C'LC BY <i>G.H.</i>	REF. MAP NO. <i>178-5</i>
C'K'D BY <i>G.D.W.</i>	REL-740
REVISED	

COUNTY ENGINEER'S COPY

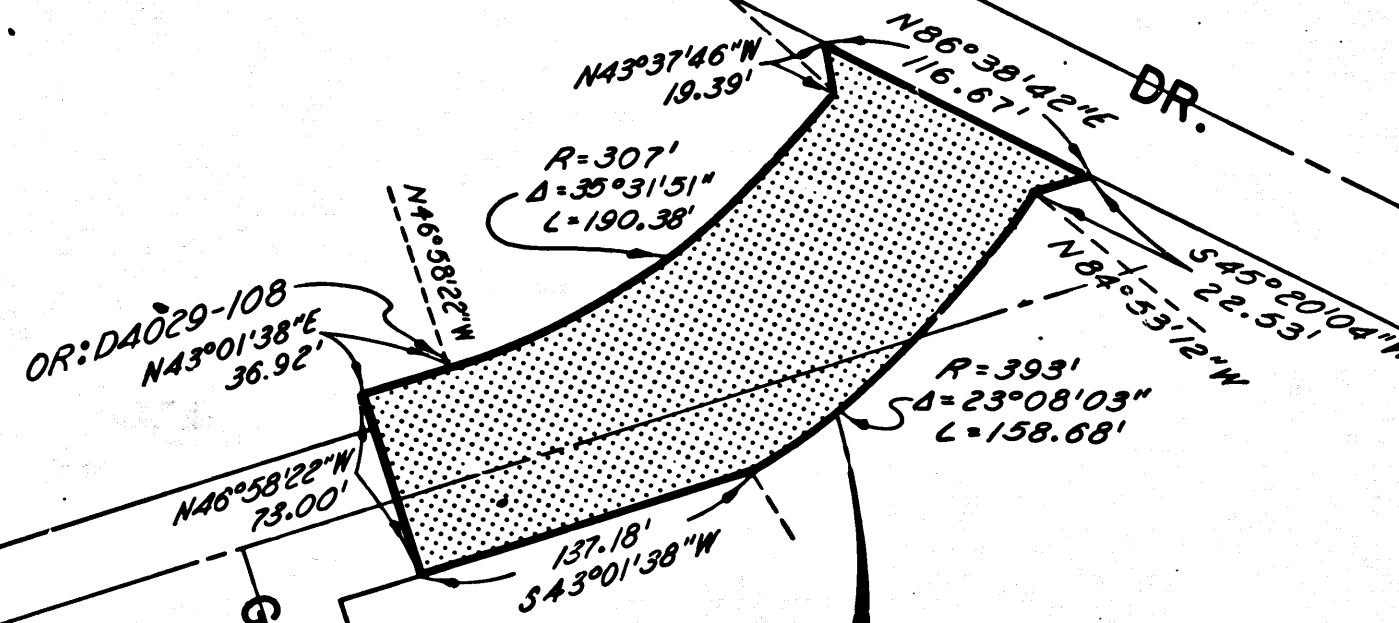
DIST	COUNTY	ROUTE	POST MILES	SHEET NO.	TOTAL SHEETS
07	L.A.	210	14/4.9	5	9

R.W. Felt
 SENIOR HIGHWAY ENGINEER
 Nov. 20, 1969
 DATE
 FILED WITH LOS ANGELES
 COUNTY RECORDER, RAY E. LEE
 NOV 28 1969



LOS ANGELES OLIVE GROWERS
 ASSOCIATION LANDS
 M.R. 53-27
 BLOCK 66
 Lot 2

OLIVE VIEW DR.
 $S86^{\circ}38'42''W$



PARCEL 2

BLEDSoE ST.
 $N43^{\circ}01'38''E$

GLADSTONE AVE.
 $S46^{\circ}57'04''E$

ROUTE 210
 Fwy.

CITY OF LOS ANGELES

INTERSTATE
 STATE OF CALIFORNIA
 TRANSPORTATION AGENCY
 DEPARTMENT OF PUBLIC WORKS
 DIVISION OF HIGHWAYS

PROPOSED RELINQUISHMENT

0 50 100 150 200

AREA TO BE RELINQUISHED SHOWN THUS

ACCESS PROHIBITED

DR'N BY	M.A.G.	R/W MAP NO.	F-1187-3
C'LC BY	G.H.	REF. MAP NO.	176-5
C'K'D BY	G.D.W.	REL-	740
REVISED			

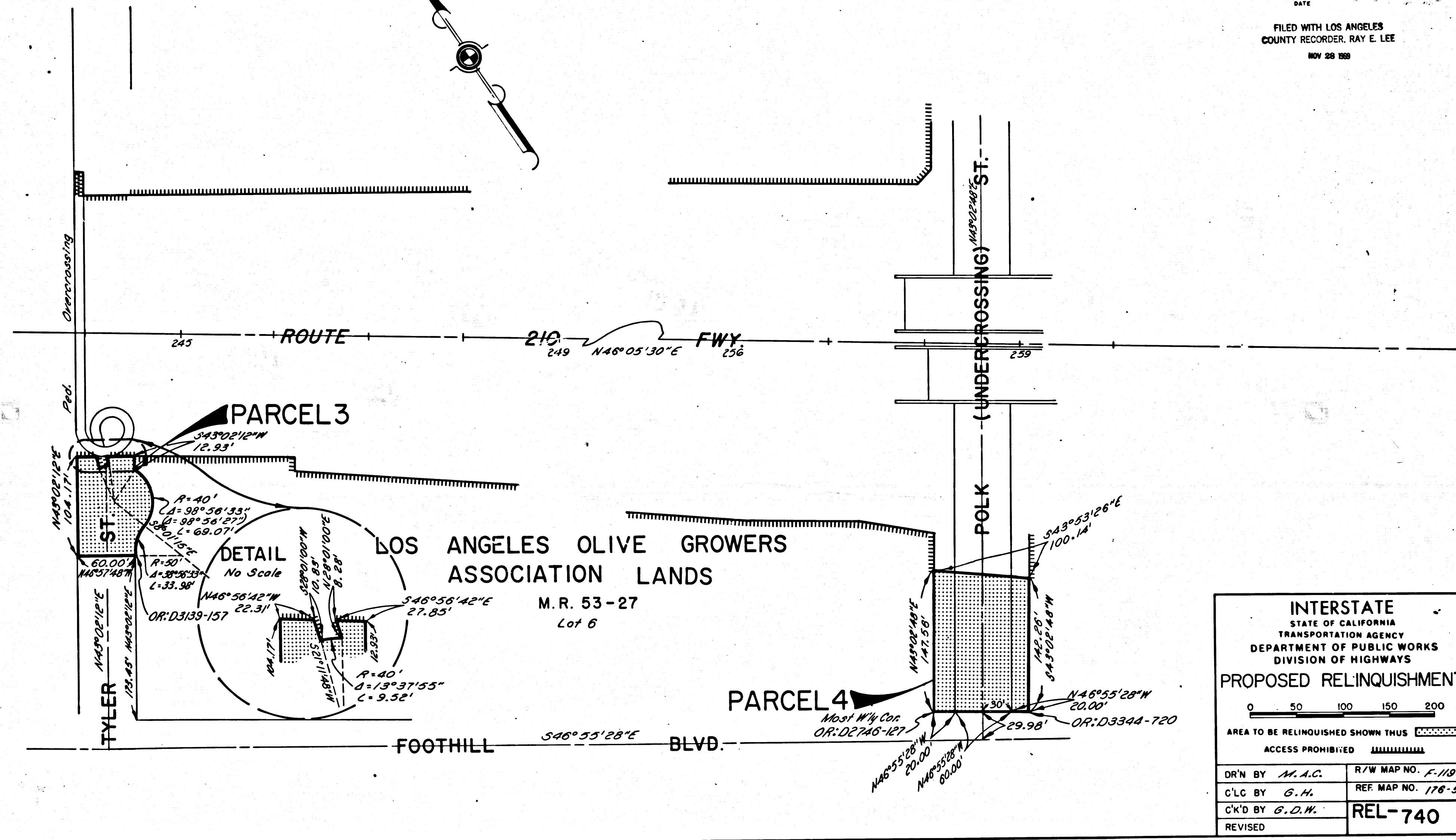
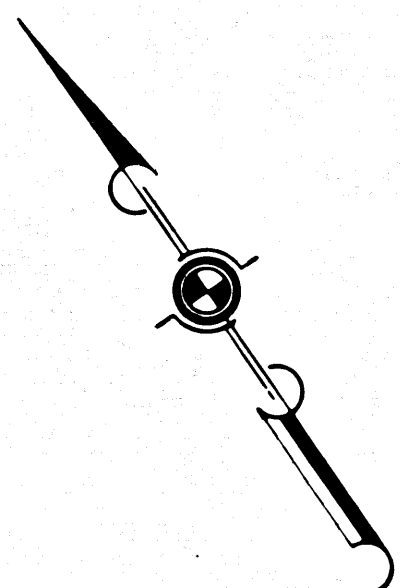
COUNTY ENGINEER'S COPY

DIST	COUNTY	ROUTE	POST MILES	SHEET NO.	TOTAL SHEETS
07	L.A.	210	1.4/4.9	6	9

CITY OF LOS ANGELES

R.W.F.
 SENIOR HIGHWAY ENGINEER
 Nov. 20, 1969
 DATE

FILED WITH LOS ANGELES
 COUNTY RECORDER, RAY E. LEE
 NOV 28 1969



PARCEL 3

DETAIL
No Scale

LOS ANGELES OLIVE GROWERS
 ASSOCIATION LANDS
 M.R. 53-27
 Lot 6

PARCEL 4

INTERSTATE
 STATE OF CALIFORNIA
 TRANSPORTATION AGENCY
 DEPARTMENT OF PUBLIC WORKS
 DIVISION OF HIGHWAYS

PROPOSED RELINQUISHMENT

0 50 100 150 200

AREA TO BE RELINQUISHED SHOWN THUS

ACCESS PROHIBITED

DR'N BY M.A.C.	R/W MAP NO. F-1197-5
C'L'G BY G.H.	REF. MAP NO. 178-5
C'K'D BY G.D.W.	REL-740
REVISED	

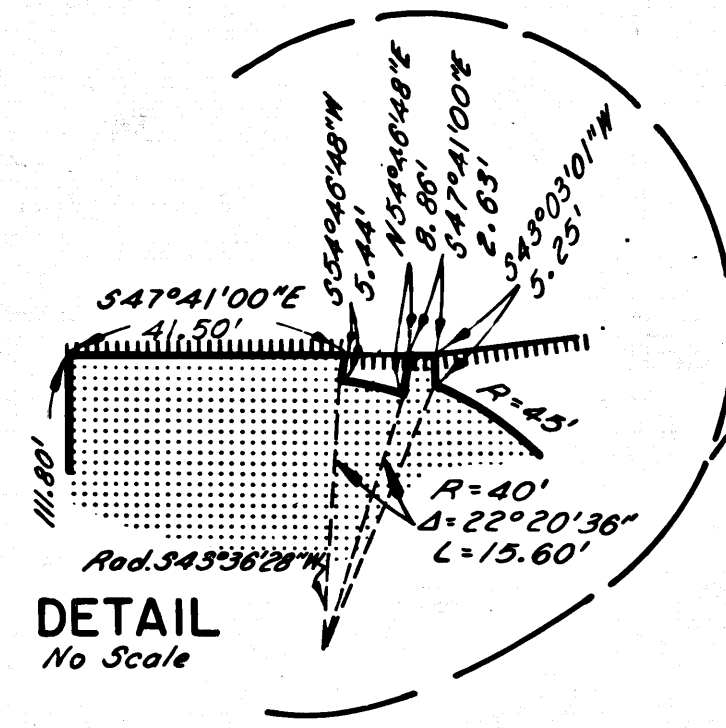
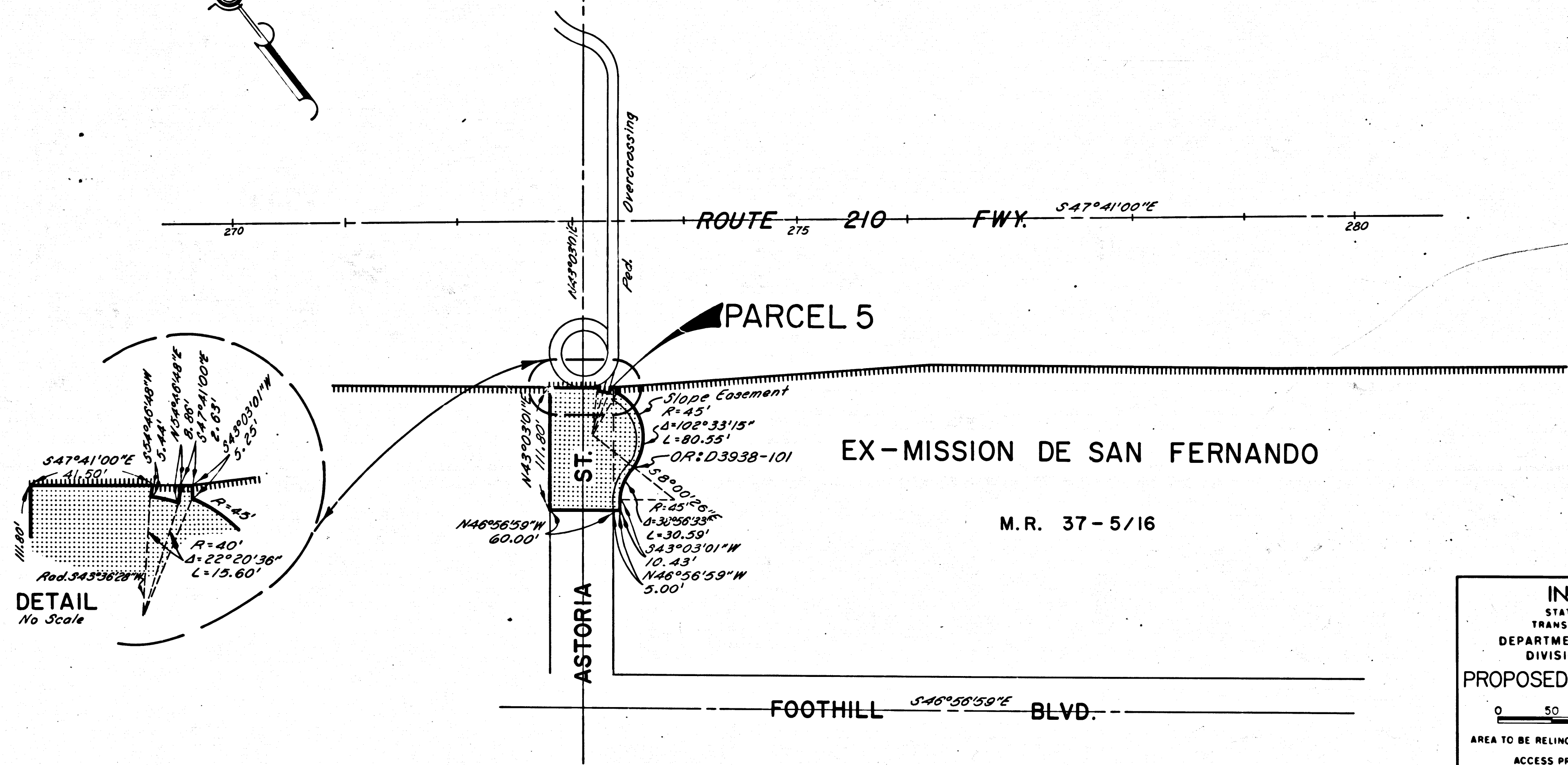
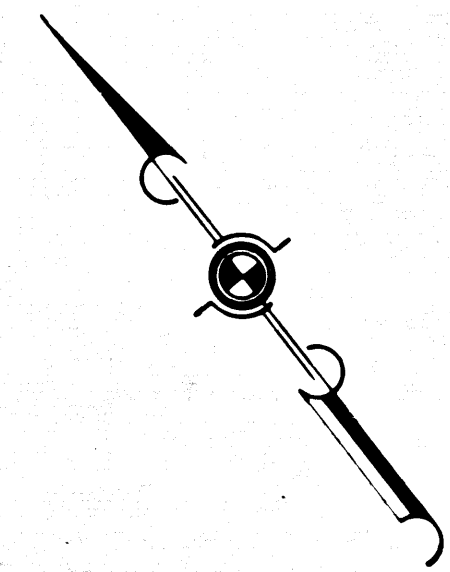
COUNTY ENGINEER'S COPY

DIST	COUNTY	ROUTE	POST MILES	SHEET NO.	TOTAL SHEETS
07	L.A.	210	1.4/4.9	7	9

R.W. Fell
 SENIOR HIGHWAY ENGINEER
 Nov. 20, 1969
 DATE

FILED WITH LOS ANGELES
 COUNTY RECORDER, RAY E. LEE
 NOV 26 1969

CITY OF LOS ANGELES



INTERSTATE
 STATE OF CALIFORNIA
 TRANSPORTATION AGENCY
 DEPARTMENT OF PUBLIC WORKS
 DIVISION OF HIGHWAYS

PROPOSED RELINQUISHMENT

0 50 100 150 200

AREA TO BE RELINQUISHED SHOWN THUS [Hatched Pattern]

ACCESS PROHIBITED [Dashed Line Pattern]

DR'N BY <i>M.A.C.</i>	R/W MAP NO. <i>F-1197-B</i>
C'LC BY <i>G.H.</i>	REF MAP NO. <i>176-5</i>
C'K'D BY <i>G.D.W.</i>	REL-740
REVISED	

COUNTY ENGINEER'S COPY

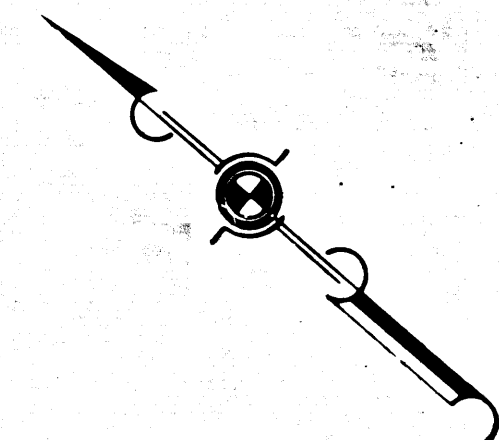
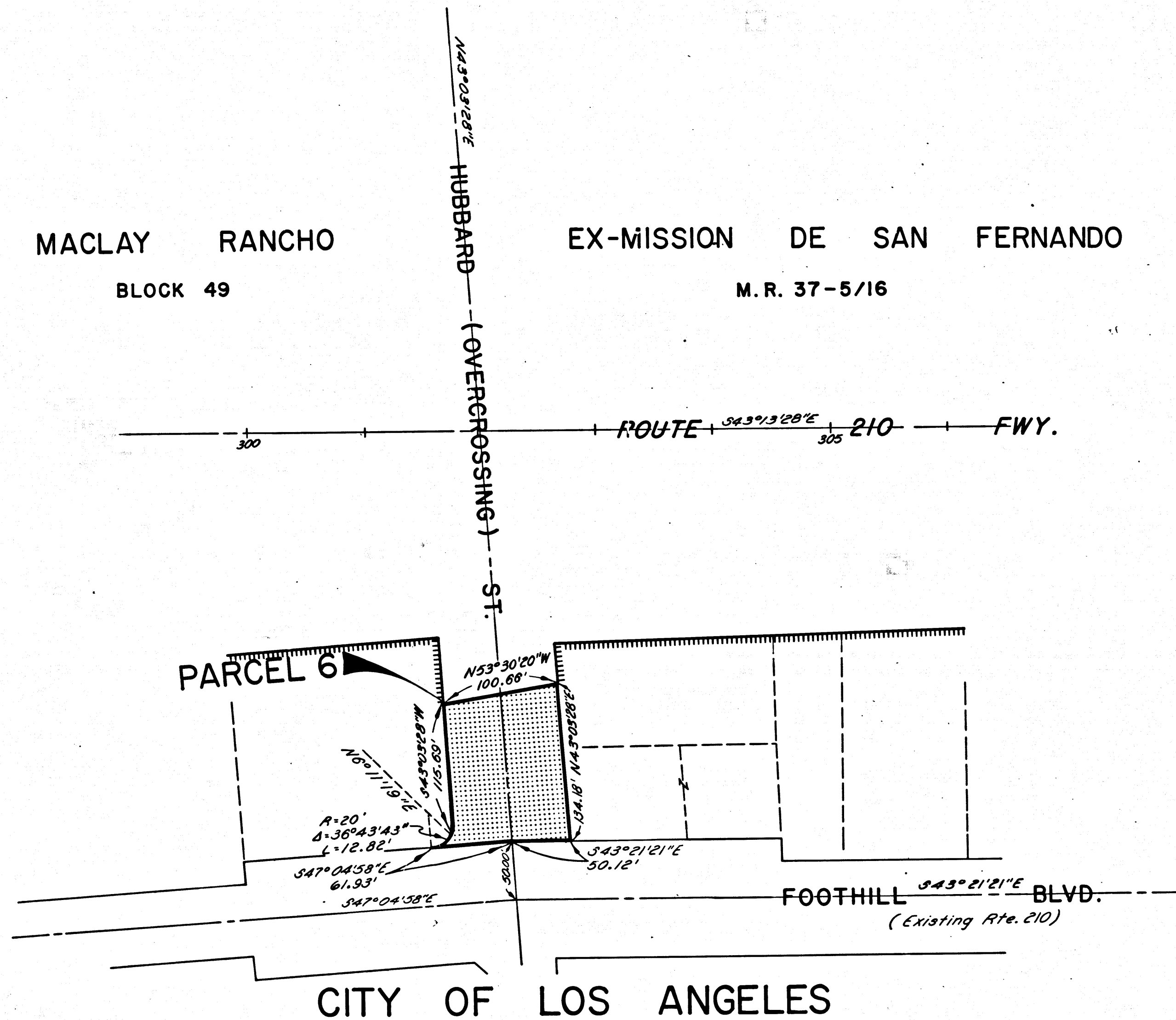
DIST	COUNTY	ROUTE	POST MILES	SHEET NO.	TOTAL SHEETS
07	L.A.	210	1.4/4.9	8	9

R.W.F.M.
 SENIOR HIGHWAY ENGINEER
 Nov. 20, 1969
 DATE

FILED WITH LOS ANGELES
 COUNTY RECORDER, RAY E. LEE
 NOV 28 1969

MACLAY RANCHO
 BLOCK 49

EX-MISSION DE SAN FERNANDO
 M. R. 37-5/16



INTERSTATE
 STATE OF CALIFORNIA
 TRANSPORTATION AGENCY
 DEPARTMENT OF PUBLIC WORKS
 DIVISION OF HIGHWAYS

PROPOSED RELINQUISHMENT

0 50 100 150 200

AREA TO BE RELINQUISHED SHOWN THUS

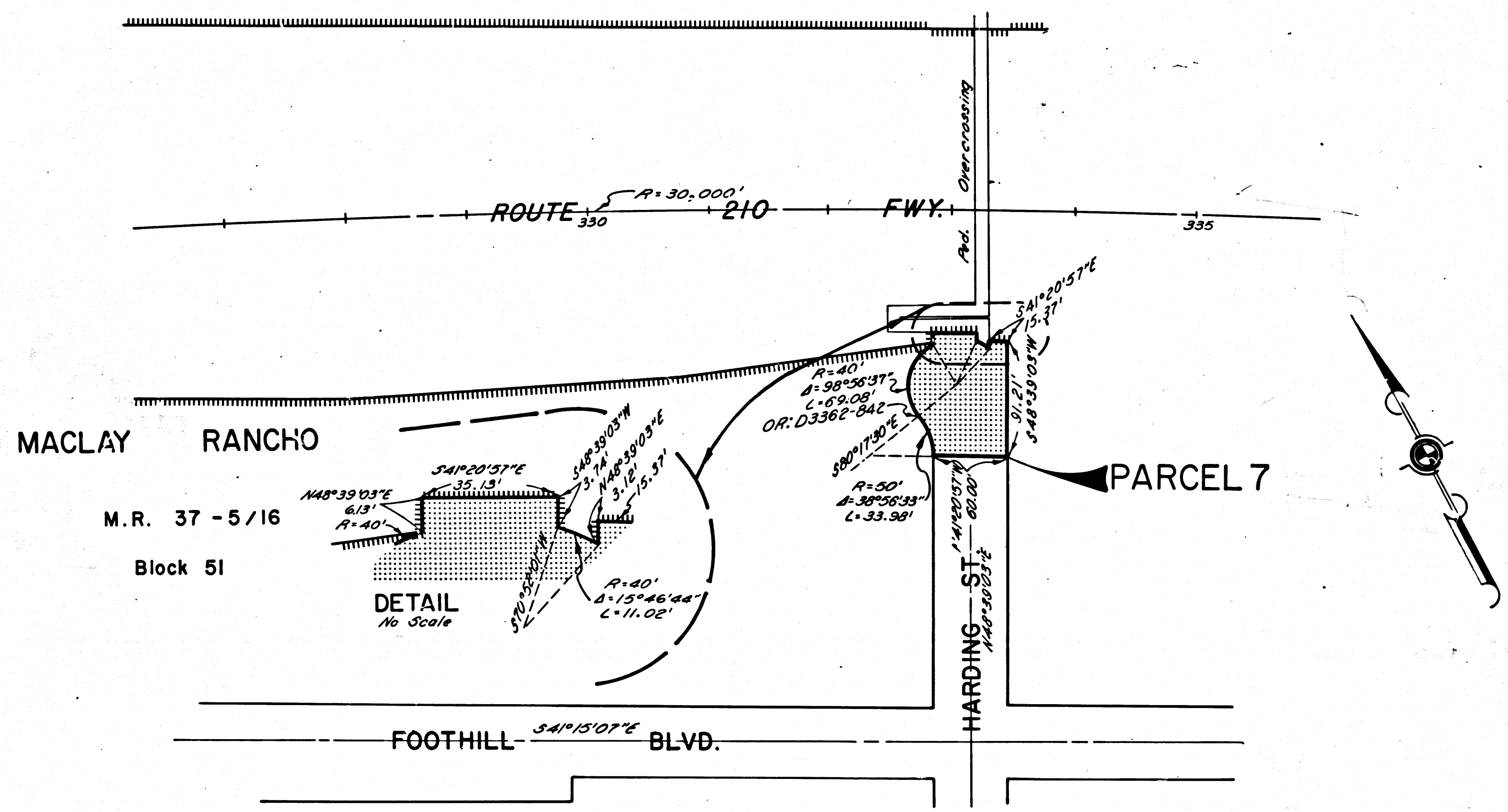
ACCESS PROHIBITED

DR'N BY <i>M.A.C.</i>	R/W MAP NO. <i>F-1198-3</i>
C'LC BY <i>G.H.</i>	REF. MAP NO. <i>176-5</i>
C'K'D BY <i>G.D.W.</i>	REL-740
REVISED	

COUNTY ENGINEER'S COPY

DIST	COUNTY	ROUTE	POST MILES	SHEET NO.	TOTAL SHEETS
07	L.A.	210	1.4/4.9	9	9

R.W. Felton
 SENIOR HIGHWAY ENGINEER
 Nov. 20, 1969
 DATE
 FILED WITH LOS ANGELES
 COUNTY RECORDER, RAY E. LEE
 NOV 26 1969



CITY OF LOS ANGELES

INTERSTATE
 STATE OF CALIFORNIA
 TRANSPORTATION AGENCY
 DEPARTMENT OF PUBLIC WORKS
 DIVISION OF HIGHWAYS

PROPOSED RELINQUISHMENT

0 50 100 150 200

AREA TO BE RELINQUISHED SHOWN THUS

ACCESS PROHIBITED

DR'N BY M.A.C.	R/W MAP NO. F1198-3
C'LC BY G.H.	REF MAP NO. 176-5
C'K'D BY G.D.W.	REL-740
REVISED	

COUNTY ENGINEER'S COPY