

DIST	COUNTY	ROUTE	POST MILES	SHEET NO.	TOTAL SHEETS
07	L.A.	210	40.3/42.5	1	1

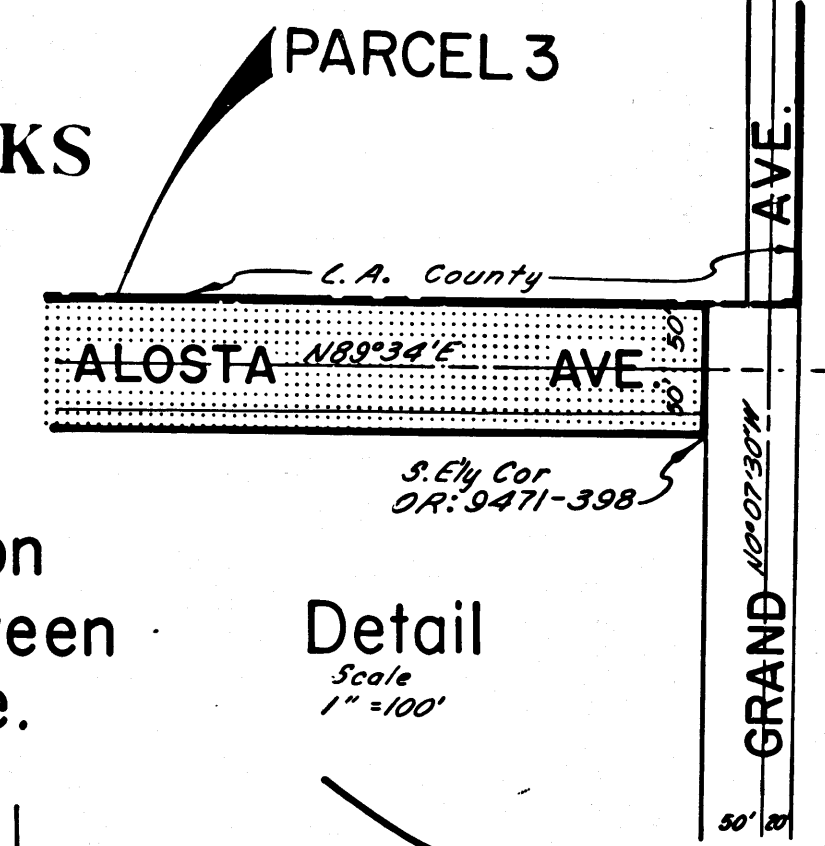
STATE OF CALIFORNIA
 TRANSPORTATION AGENCY
 DEPARTMENT OF PUBLIC WORKS
 DIVISION OF HIGHWAYS

RIGHT OF WAY MAPS OF
STATE HIGHWAY
 In the County of Los Angeles on
 Foothill Blvd. and Alostia Ave. between
 San Gabriel Ave. and Grand Ave.

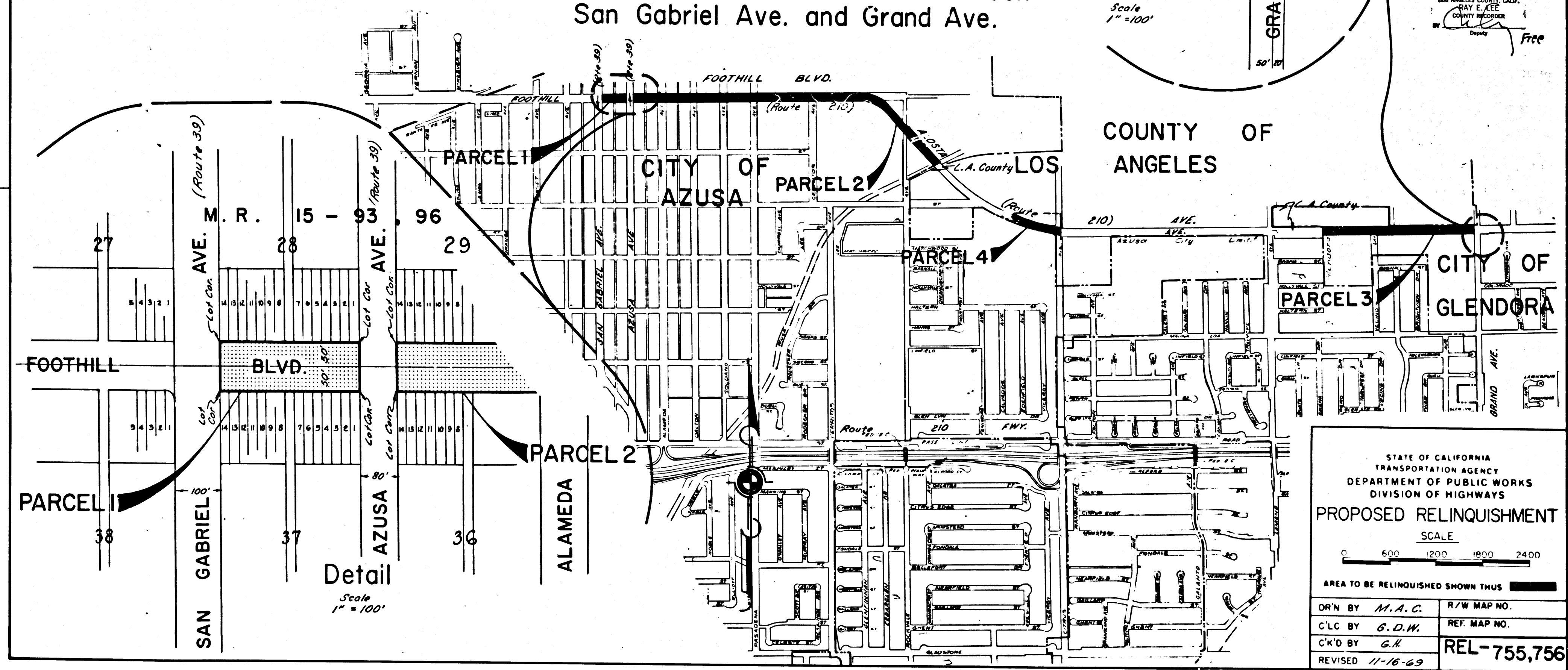
A. H. Hinkel
 DEPUTY DISTRICT ENGINEER
 DATE Dec. 8, 1969

2142

FILED
 AT REQUEST OF
 DEPT. OF PUBLIC WORKS
 FEB. 4, 1970
 30 PAST 12 P.M.
 BOOK 8
 PAGE 74
 OF STATE HIGHWAY MAPS
 LOS ANGELES COUNTY, CALIF.
 RAY E. LEE
 COUNTY RECORDER
 Deputy Free



Detail
 Scale
 1" = 100'



Detail
 Scale
 1" = 100'

STATE OF CALIFORNIA
 TRANSPORTATION AGENCY
 DEPARTMENT OF PUBLIC WORKS
 DIVISION OF HIGHWAYS

PROPOSED RELINQUISHMENT

SCALE
 0 600 1200 1800 2400

AREA TO BE RELINQUISHED SHOWN THUS

DR'N BY <i>M.A.C.</i>	R/W MAP NO.
C'LC BY <i>G.D.W.</i>	REF. MAP NO.
C'D BY <i>G.H.</i>	REL-755,756
REVISED 11-16-69	

COUNTY ENGINEER'S COPY

8/74