

DIST	COUNTY	ROUTE	POST MILES	SHEET NO.	TOTAL SHEETS
07	L.A.	210	411-442	1	12

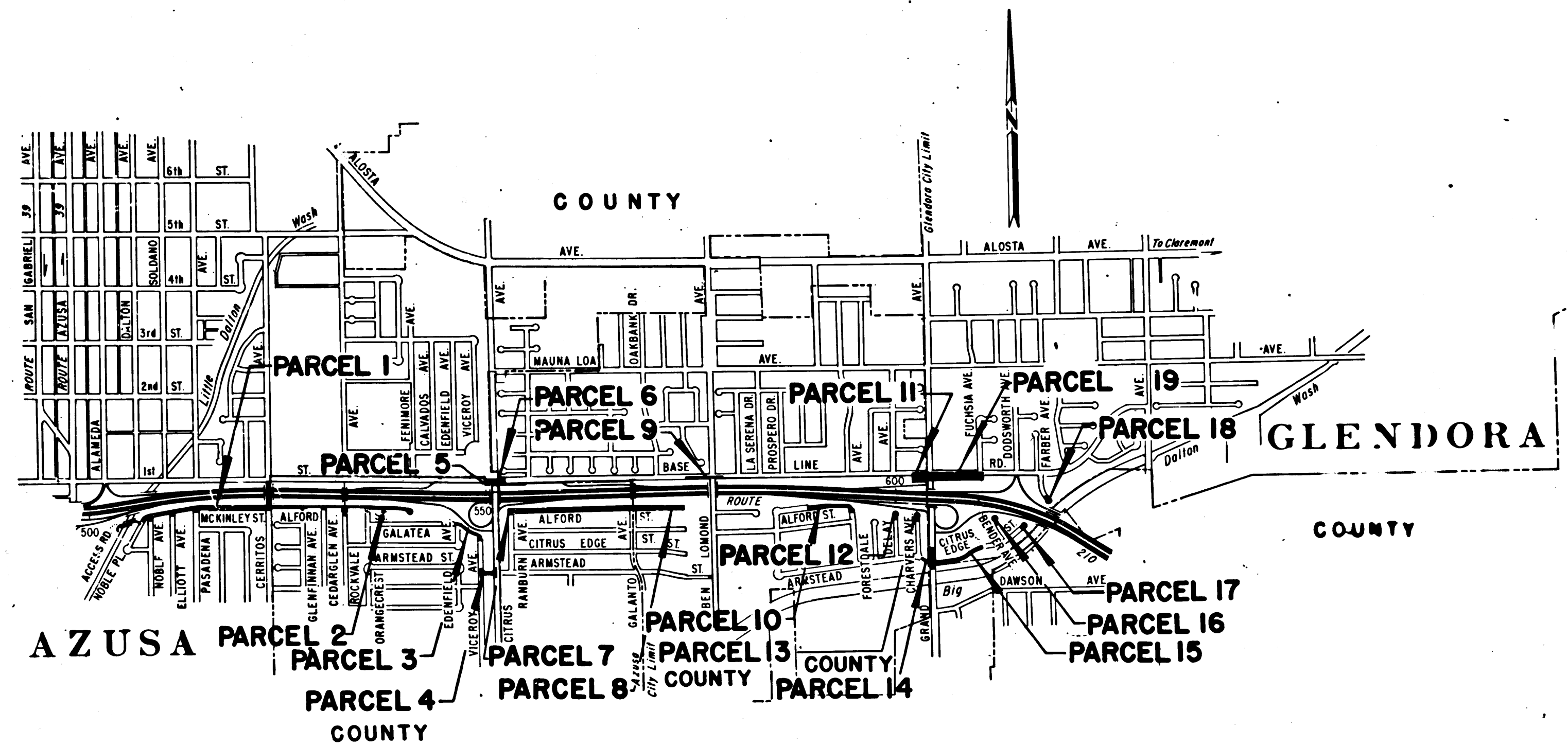
STATE OF CALIFORNIA
 TRANSPORTATION AGENCY
 DEPARTMENT OF PUBLIC WORKS
 DIVISION OF HIGHWAYS

Ad. H. H. H. H.
 DISTRICT ENGINEER
 Feb. 18, 1970
 DATE

RIGHT OF WAY MAPS OF
 STATE HIGHWAY

In the Cities of Azusa, Glendora and the County of Los Angeles,
 between Little Dalton Wash and Big Dalton Wash

1951
 FILED
 AT REQUEST OF
 DEPT. OF PUBLIC WORKS
 APR. 20, 1970
 30 MIN.
 PAST 12 P.M.
 IN BOOK 8
 AT PAGE 78
 OF STATE HIGHWAY MAPS
 LOS ANGELES COUNTY, CALIF.
 RAY E. ELLIOTT
 COUNTY RECORDER
 Denny
 Free



INTERSTATE
 STATE OF CALIFORNIA
 TRANSPORTATION AGENCY
 DEPARTMENT OF PUBLIC WORKS
 DIVISION OF HIGHWAYS
 PROPOSED RELINQUISHMENT

SCALE IN FEET
 1000 0 2000 3000

DR'N BY <i>L.W.K.</i>	R/W MAP NO. <i>F-1230</i>
C'LC BY <i>E.I.P.</i>	REF. MAP NO. <i>182-3</i>
C'K'D BY <i>G.H.</i>	REL-762,763
REVISED	764

8/18-89

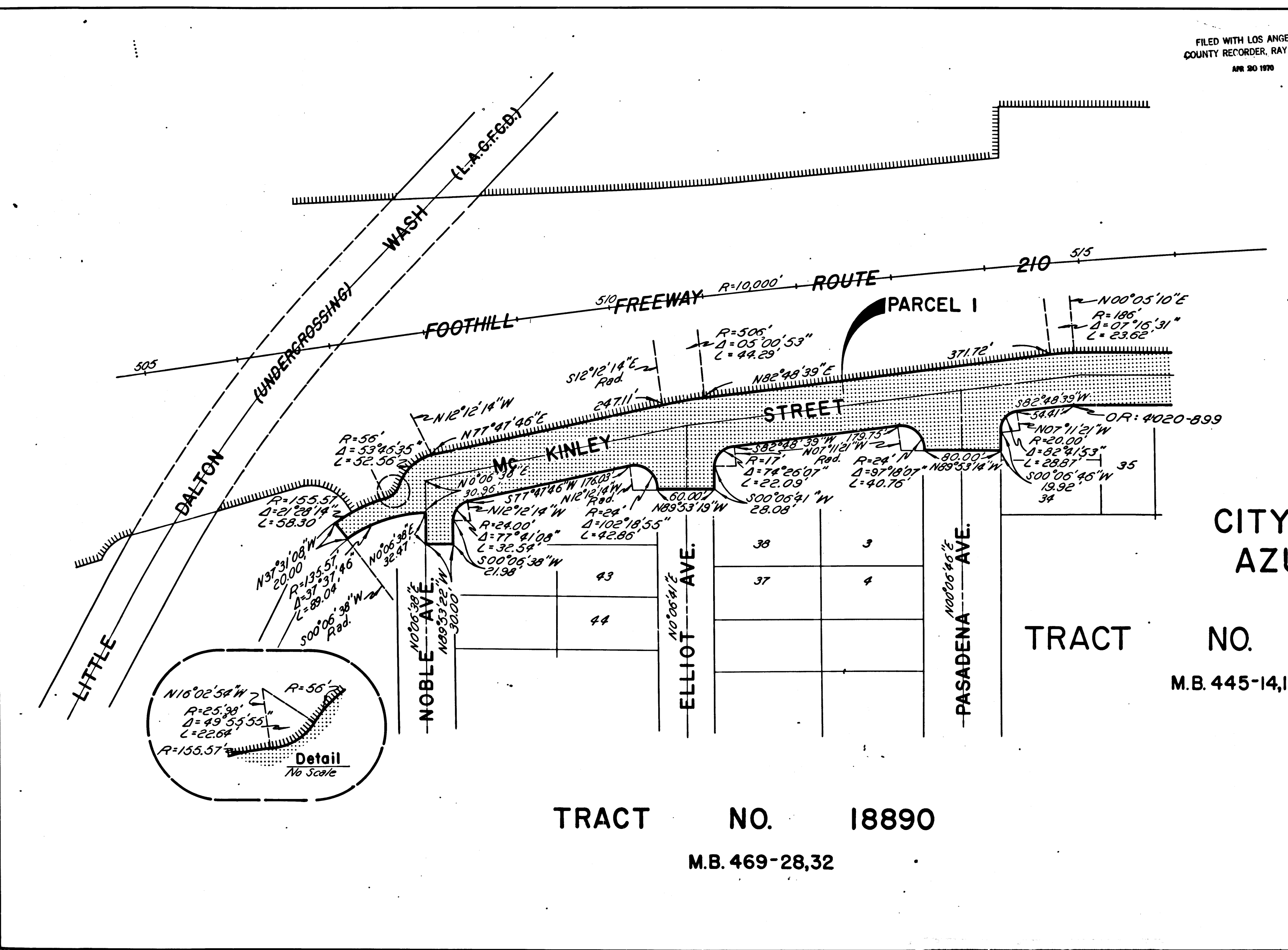
COUNTY ENGINEER'S COPY

1230

DIST	COUNTY	ROUTE	POST MILES	SHEET NO.	TOTAL SHEETS
07	L.A.	210	41.1-44.2	2	12

FILED WITH LOS ANGELES COUNTY RECORDER, RAY E. LEE
APR 30 1970

B.W. Fell
SENIOR HIGHWAY ENGINEER
Feb. 13, 1970
DATE



CITY OF
AZUSA

TRACT NO. 18318

M.B. 445-14,15

TRACT NO. 18890

M.B. 469-28,32

INTERSTATE
STATE OF CALIFORNIA
TRANSPORTATION AGENCY
DEPARTMENT OF PUBLIC WORKS
DIVISION OF HIGHWAYS

PROPOSED RELINQUISHMENT

0 50 100 150 200

AREA TO BE RELINQUISHED SHOWN THUS

ACCESS PROHIBITED

DR'N BY <i>U.W.K.</i>	R/W MAP NO. F-1230-5
C/LC BY <i>E.J.P.</i>	REF MAP NO. 182-3
C/K'D BY <i>G.H.</i>	REL- 762,763
REVISED	764

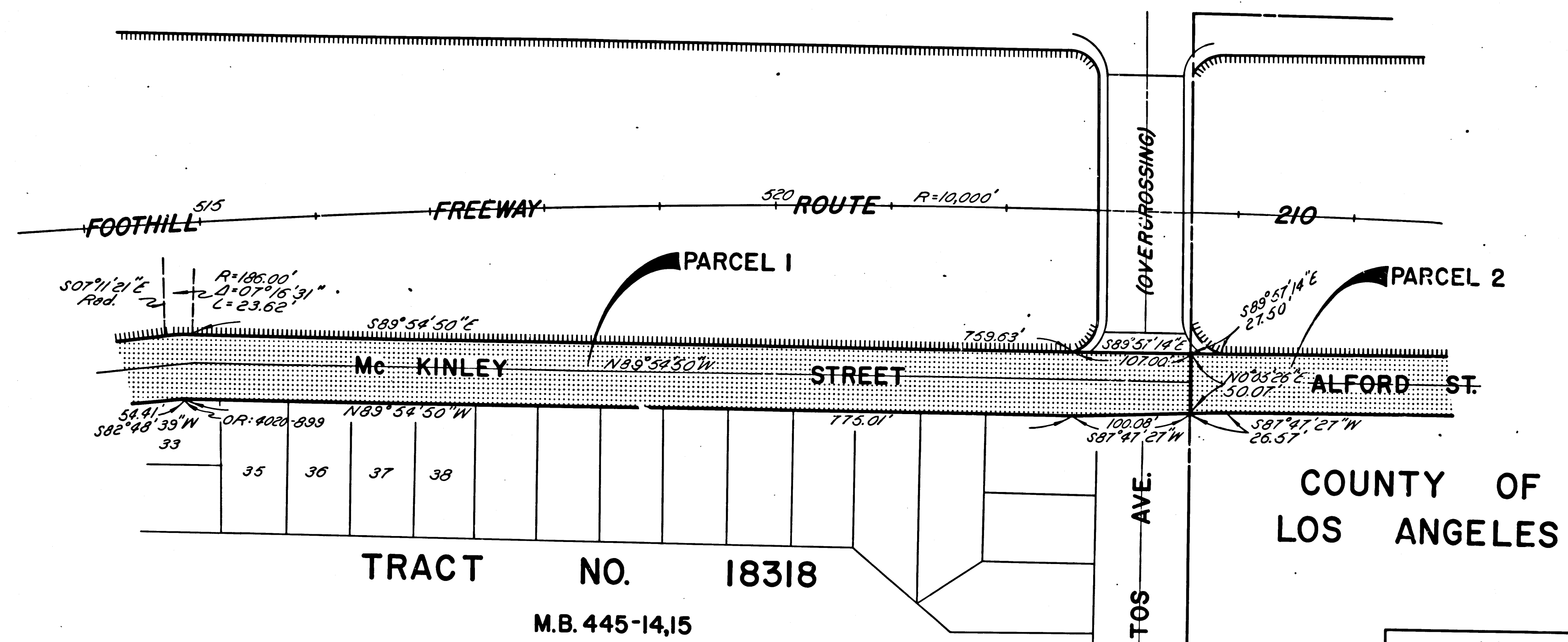
CITY OF AZUSA

BOOK 8 PAGE 80

FILED WITH LOS ANGELES
COUNTY RECORDER, RAY E. LEE
APR 20 1970

DIST	COUNTY	ROUTE	POST MILES	SHEET NO.	TOTAL SHEETS
07	L.A.	210	411-442	3	12

R. W. F. A.
SENIOR HIGHWAY ENGINEER
Feb. 18, 1970
DATE



**COUNTY OF
LOS ANGELES**

INTERSTATE
 STATE OF CALIFORNIA
 TRANSPORTATION AGENCY
 DEPARTMENT OF PUBLIC WORKS
 DIVISION OF HIGHWAYS
PROPOSED RELINQUISHMENT

0 50 100 150 200
AREA TO BE RELINQUISHED SHOWN THUS
ACCESS PROHIBITED

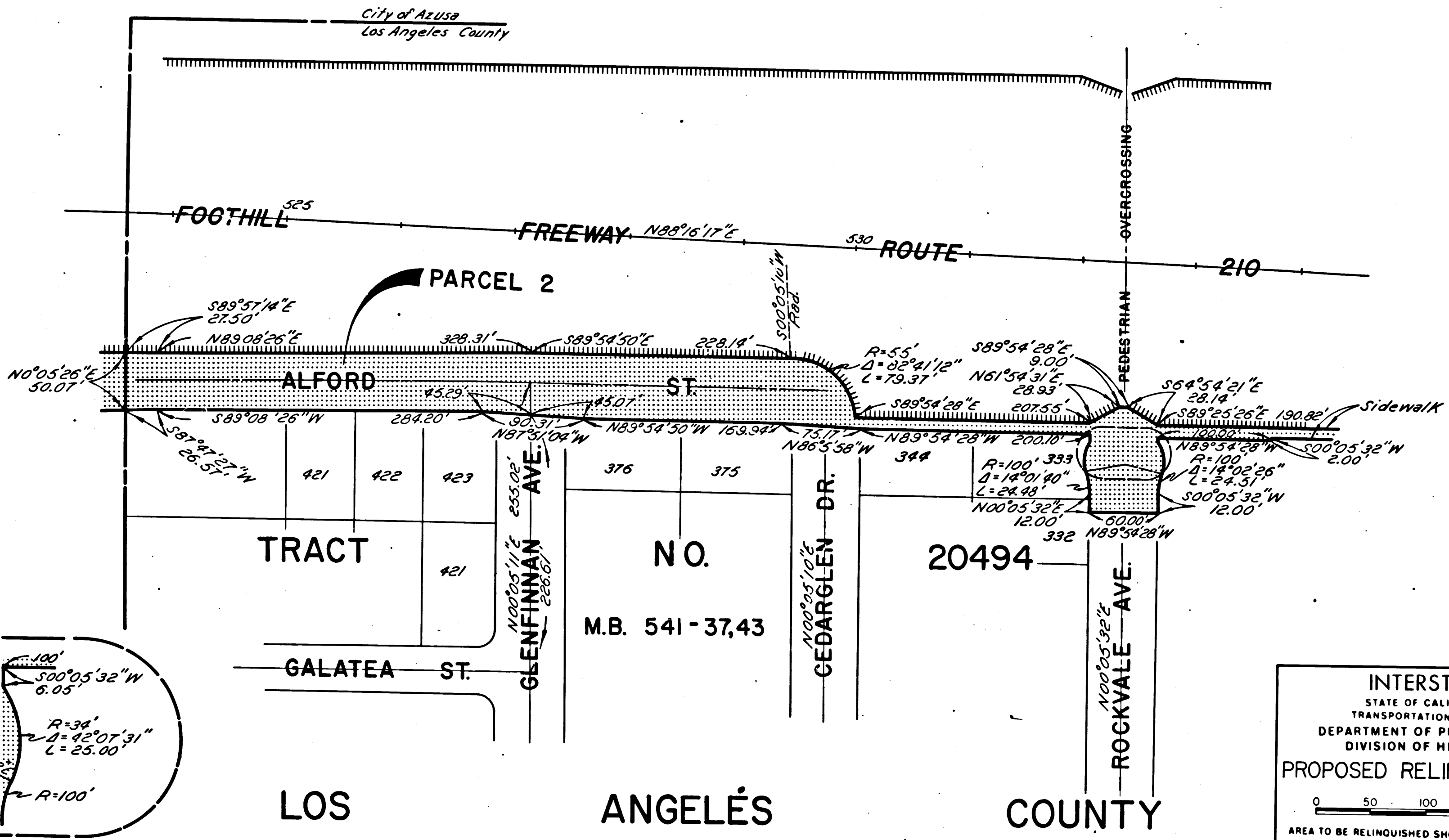
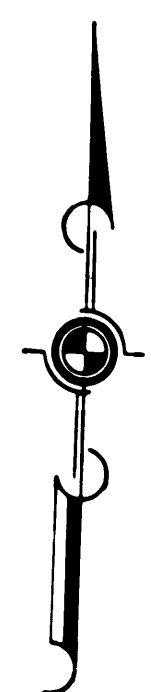
DR'N BY <i>L.W.K.</i>	R/W MAP NO. <i>F-1230</i>
C'LC BY <i>E.J.P.</i>	REF. MAP NO. <i>182-3</i>
C'KD BY <i>G.H.</i>	REL-762,763
REVISED	764

COUNTY ENGINEER'S COPY

FILED WITH LOS ANGELES
COUNTY RECORDER, RAY E. LEE
APR 30 1970

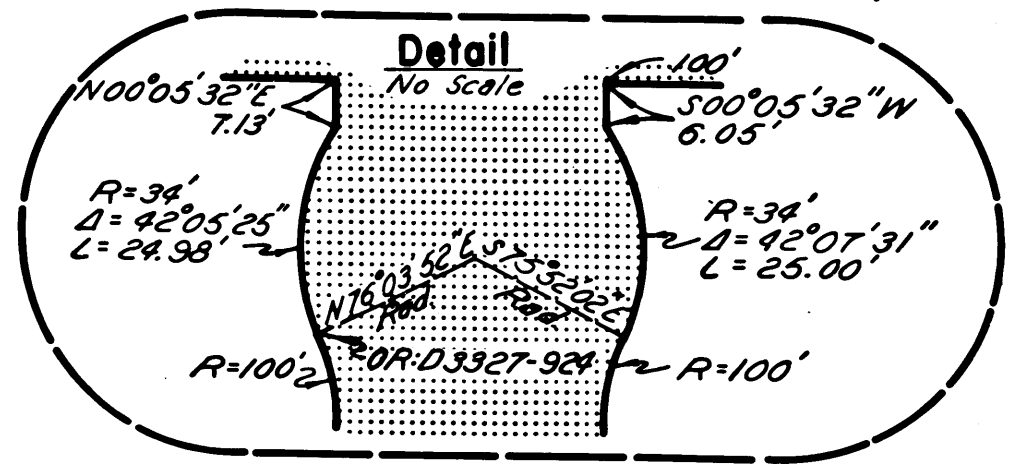
DIST	COUNTY	ROUTE	POST. MILES	SHEET NO.	TOTAL SHEETS
07	L.A.	210	9.11-9.22	4	12

R.W. Fisher
SENIOR HIGHWAY ENGINEER
Feb. 18, 1970
DATE



CITY OF
AZUSA

LOS ANGELES COUNTY



INTERSTATE
STATE OF CALIFORNIA
TRANSPORTATION AGENCY
DEPARTMENT OF PUBLIC WORKS
DIVISION OF HIGHWAYS

PROPOSED RELINQUISHMENT

0 50 100 150 200

AREA TO BE RELINQUISHED SHOWN THUS [Dotted Pattern]

ACCESS PROHIBITED [Hatched Pattern]

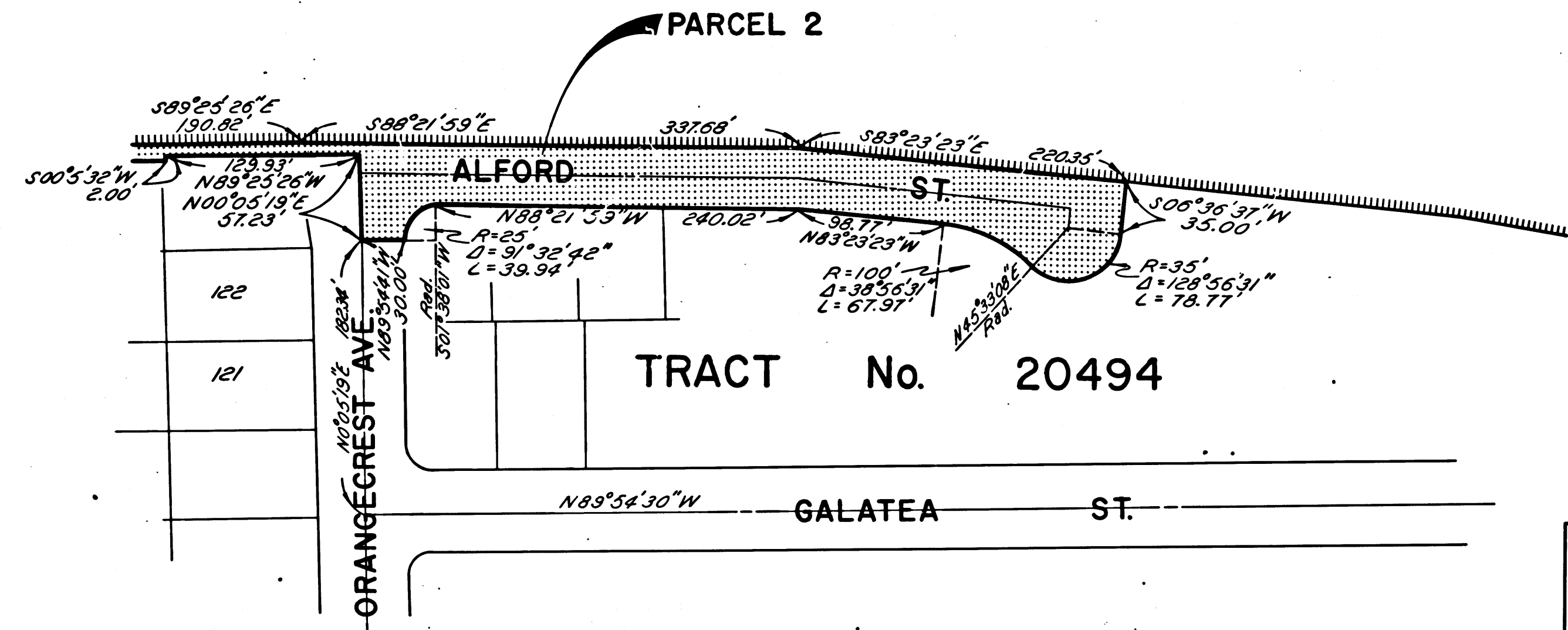
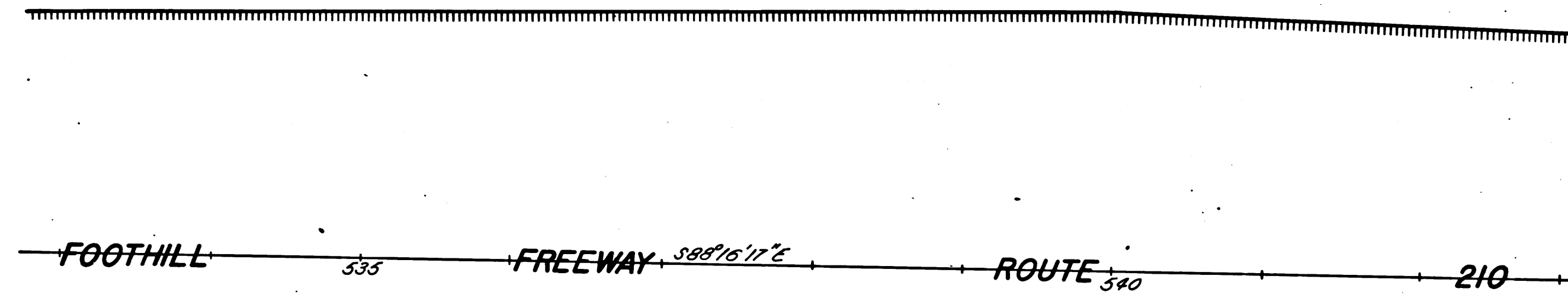
DR'N BY <i>L.W.K.</i>	R/W MAP NO. <i>F-1230-7</i>
C'LC BY <i>E.J.P.</i>	REF. MAP NO. <i>182-3</i>
C'K'D BY <i>G.H.</i>	REL-762,763
REVISED	764

FILED WITH LOS ANGELES
COUNTY RECORDER, RAY E. LEE

DIST	COUNTY	ROUTE	POST MILES	SHEET NO.	TOTAL SHEETS
07	L.A.	210	41.1-44.2	5	12

APR 20 1970

R. W. Felt
SENIOR HIGHWAY ENGINEER
Feb. 18, 1970
DATE



M.B. 549-37,43

LOS ANGELES COUNTY

INTERSTATE
STATE OF CALIFORNIA
TRANSPORTATION AGENCY
DEPARTMENT OF PUBLIC WORKS
DIVISION OF HIGHWAYS

PROPOSED RELINQUISHMENT

0 50 100 150 200

AREA TO BE RELINQUISHED SHOWN THUS

ACCESS PROHIBITED

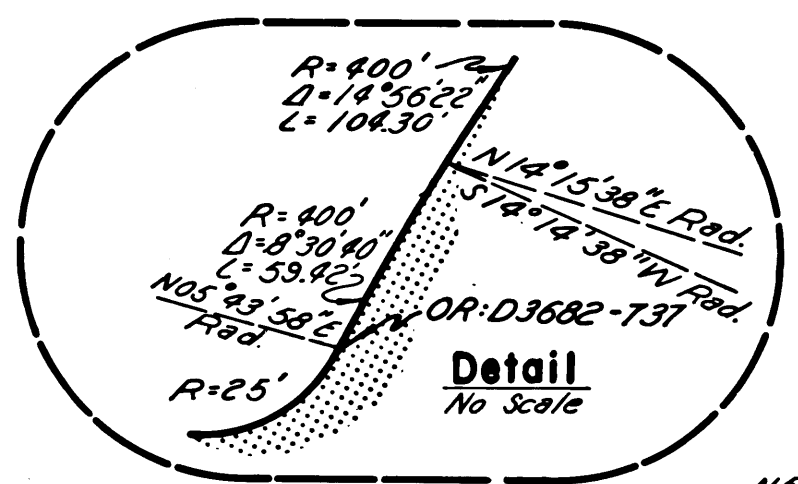
DR'N BY <i>U.W.K.</i>	R/W MAP NO. <i>F-1230-8</i>
C/LC BY <i>E.J.P.</i>	REF. MAP NO. <i>182-3</i>
C'K'D BY <i>G.H.</i>	REL-762,763
REVISED	764

COUNTY ENGINEER'S COPY

FILED WITH LOS ANGELES COUNTY RECORDER, RAY E. LEE
MAR 20 1970

DIST	COUNTY	ROUTE	POST MILES	SHEET NO.	TOTAL SHEETS
07	L.A.	210	41.1-44.2	6	12

R. W. F. M.
SENIOR HIGHWAY ENGINEER
Feb. 18, 1970
DATE

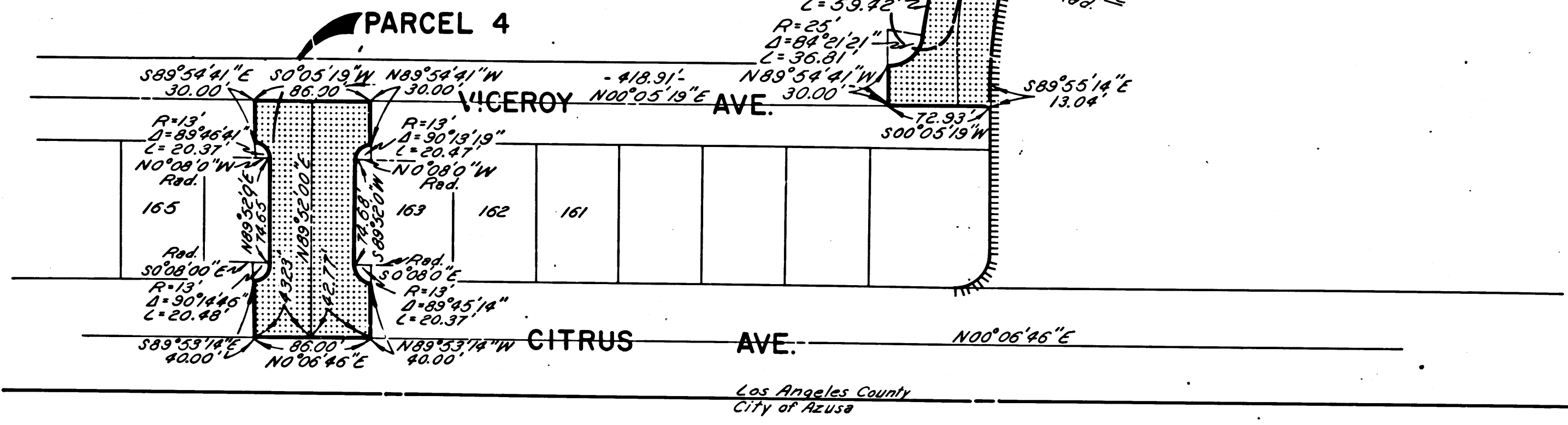


COUNTY OF LOS ANGELES

TRACT NO. 20494

M.B. 541 37/43

PARCEL 3



FOOTHILL FWY. 530 ROUTE 547 210 R=20,000'

INTERSTATE
STATE OF CALIFORNIA
TRANSPORTATION AGENCY
DEPARTMENT OF PUBLIC WORKS
DIVISION OF HIGHWAYS

PROPOSED RELINQUISHMENT

0 50 100 150 200

AREA TO BE RELINQUISHED SHOWN THUS [Dotted Box]

ACCESS PROHIBITED [Hatched Box]

DR'N BY <i>L.W.K.</i>	R/W MAP NO. <i>F-1290-9</i>
C'LC BY <i>E.J.P.</i>	REF. MAP NO. <i>182-3</i>
C'K'D BY <i>G.H.</i>	REL-762,763
REVISED	764

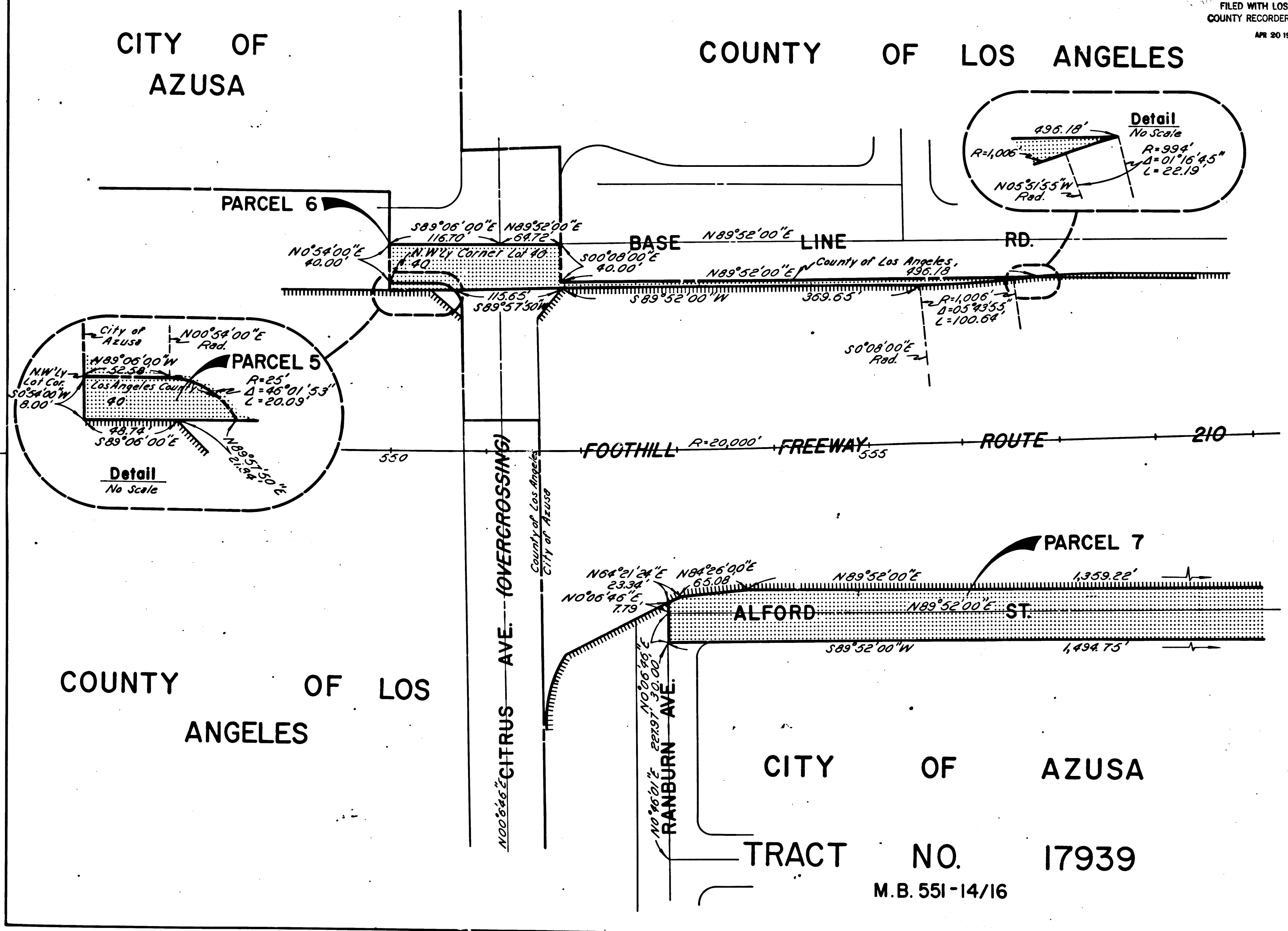
FILED WITH LOS ANGELES
COUNTY RECORDER, RAY E. LEE
APR 20 1970

DIST	COUNTY	ROUTE	POST MILES	SHEET NO.	TOTAL SHEETS
07	L.A.	210	41.1-44.2	7	12

R. W. Feltz
SENIOR HIGHWAY ENGINEER
Feb. 18, 1970
DATE

CITY OF
AZUSA

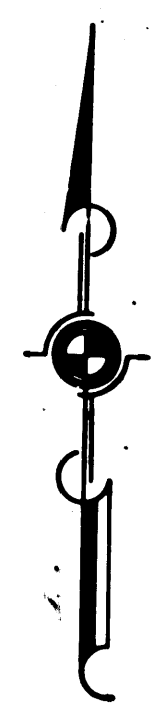
COUNTY OF LOS ANGELES



COUNTY OF LOS ANGELES

CITY OF AZUSA

TRACT NO. 17939
M.B. 551-14/16



INTERSTATE
STATE OF CALIFORNIA
TRANSPORTATION AGENCY
DEPARTMENT OF PUBLIC WORKS
DIVISION OF HIGHWAYS

PROPOSED RELINQUISHMENT

0 50 100 150 200

AREA TO BE RELINQUISHED SHOWN THUS

ACCESS PROHIBITED

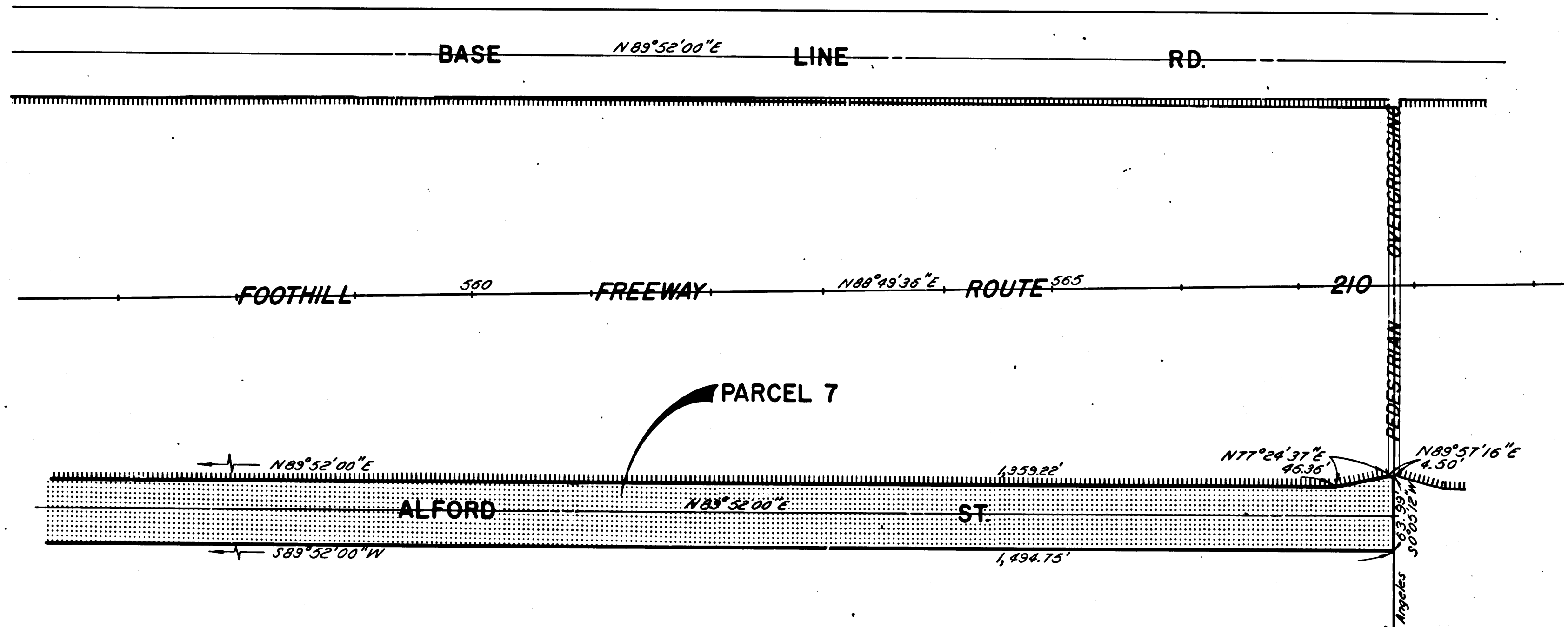
DR'N BY <i>L.W.K.</i>	R/W MAP NO. <i>F-1231-1</i>
C'LC BY <i>E.J.P.</i>	REF. MAP NO. <i>182-3</i>
C'K'D BY <i>G.H.</i>	REL-762,763
REVISED	764

COUNTY ENGINEER'S COPY

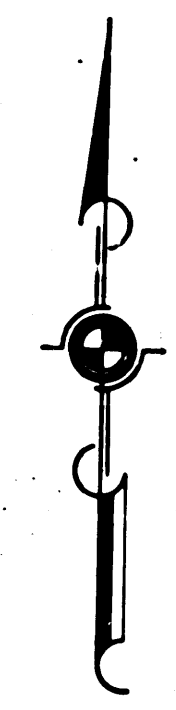
FILED WITH LOS ANGELES
COUNTY RECORDER, RAY E. LEE
APR 20 1970

DIST	COUNTY	ROUTE	POST MILES	SHEET NO.	TOTAL SHEETS
07	L.A.	210	41.1-442	8	12

R.W. F.M.
SENIOR HIGHWAY ENGINEER
Feb. 18, 1970
DATE



CITY OF AZUSA
TRACT NO. 17939
M.B. 551 - 14/16



INTERSTATE
STATE OF CALIFORNIA
TRANSPORTATION AGENCY
DEPARTMENT OF PUBLIC WORKS
DIVISION OF HIGHWAYS
PROPOSED RELINQUISHMENT

0 50 100 150 200

AREA TO BE RELINQUISHED SHOWN THUS

ACCESS PROHIBITED

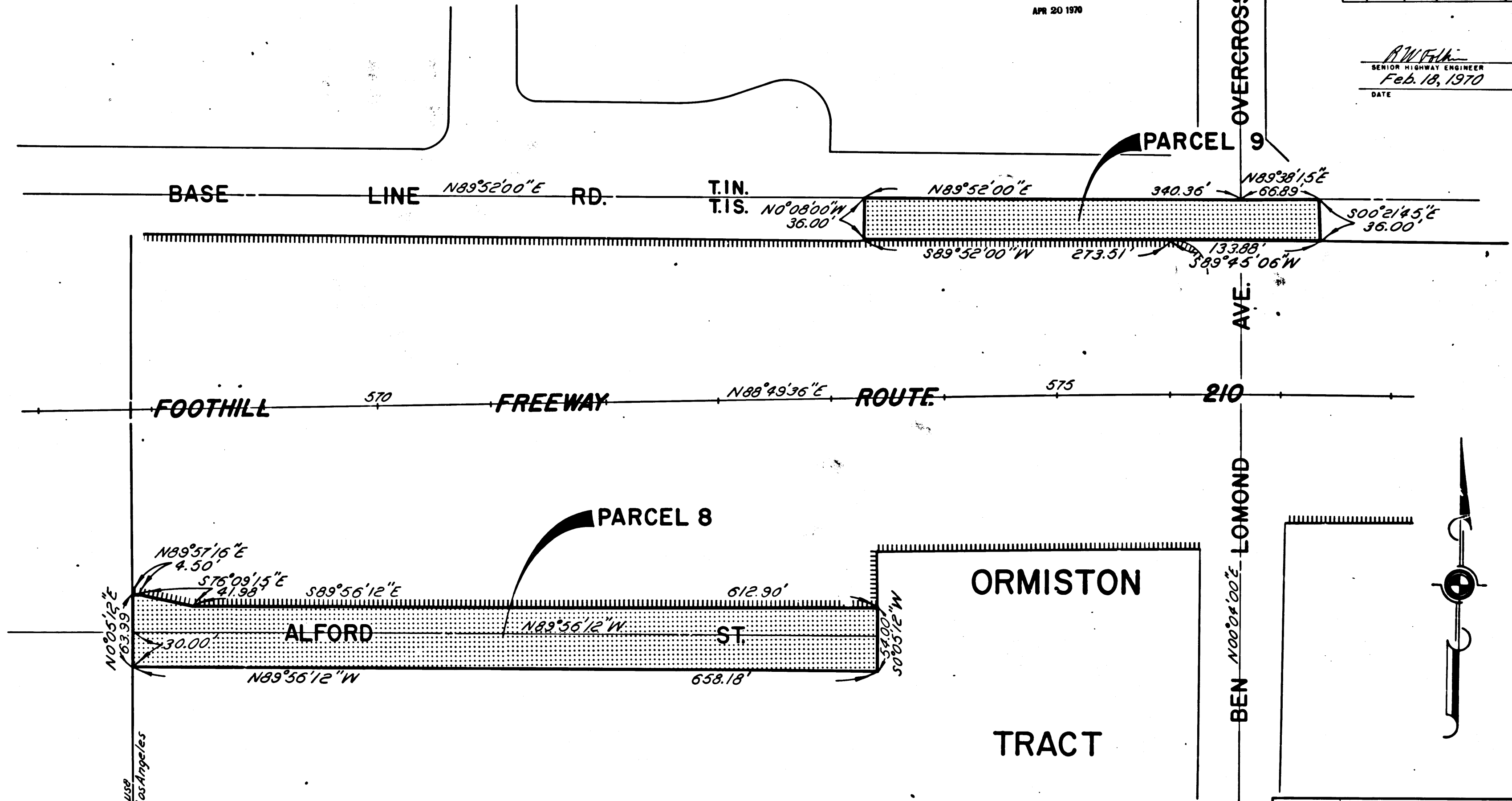
DR'N BY <i>L.W.K.</i>	R/W MAP NO. <i>F-1231-2</i>
C'LC BY <i>E.J.P.</i>	REF. MAP NO. <i>182-3</i>
CK'D BY <i>G.H.</i>	REL-762,763
REVISED	764

COUNTY ENGINEER'S COPY

FILED WITH LOS ANGELES
COUNTY RECORDER, RAY E. LEE
APR 20 1970

DIST	COUNTY	ROUTE	POST MILES	SHEET NO.	TOTAL SHEETS
07	L.A.	210	41.1-44.2	9	12

R.W. Felt
SENIOR HIGHWAY ENGINEER
Feb. 18, 1970
DATE



COUNTY OF LOS ANGELES

M.B. 33-72,73

INTERSTATE
STATE OF CALIFORNIA
TRANSPORTATION AGENCY
DEPARTMENT OF PUBLIC WORKS
DIVISION OF HIGHWAYS

PROPOSED RELINQUISHMENT

0 50 100 150 200

AREA TO BE RELINQUISHED SHOWN THUS

ACCESS PROHIBITED

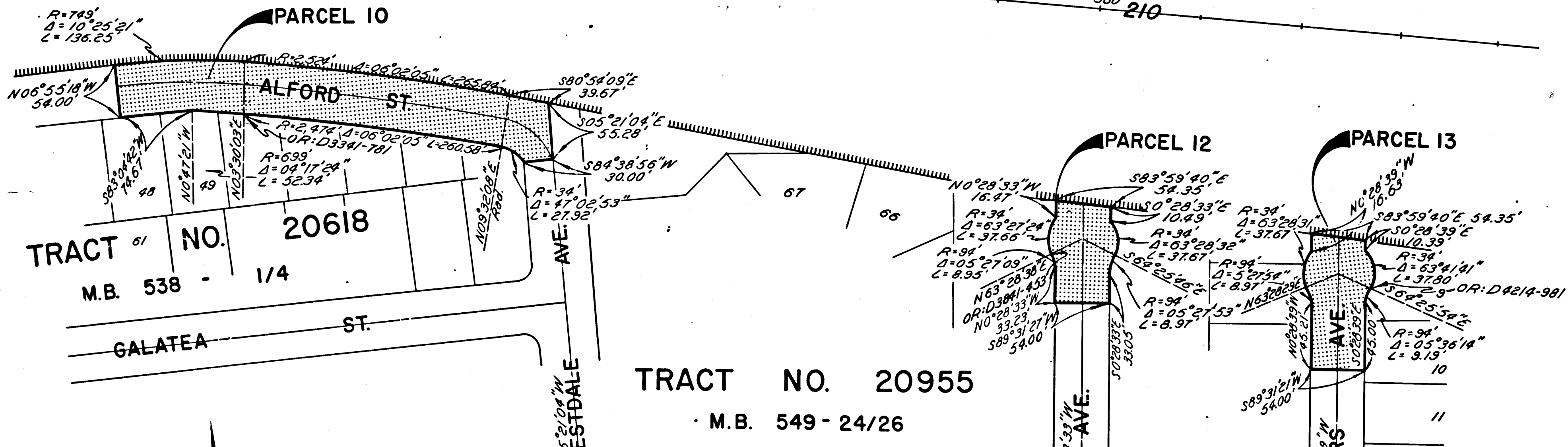
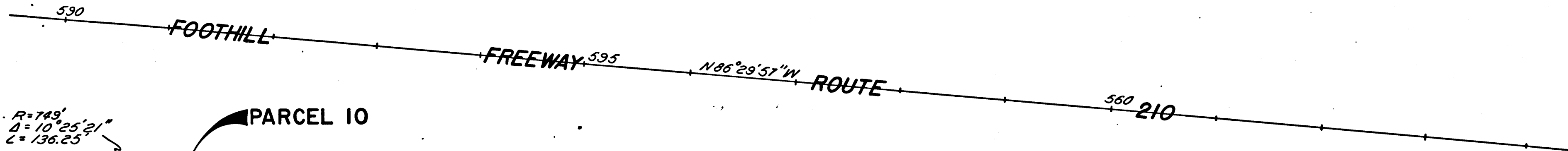
DR'N BY <i>L.W.K.</i>	R/W MAP NO. <i>F-1231-3</i>
C'LC BY <i>E.J.P.</i>	REF. MAP NO. <i>182.3</i>
C'K'D BY <i>G.H.</i>	REL-762,763
REVISED	764

COUNTY ENGINEER'S COPY

FILED WITH LOS ANGELES COUNTY RECORDER, RAY E. LEE
APR 20 1970

DIST	COUNTY	ROUTE	POST MILES	SHEET NO.	TOTAL SHEETS
07	L.A.	210	411-442	10	12

R. W. Feltham
SENIOR HIGHWAY ENGINEER
Feb. 18, 1970
DATE



COUNTY OF LOS ANGELES

INTERSTATE
STATE OF CALIFORNIA
TRANSPORTATION AGENCY
DEPARTMENT OF PUBLIC WORKS
DIVISION OF HIGHWAYS

PROPOSED RELINQUISHMENT

0 50 100 150 200

AREA TO BE RELINQUISHED SHOWN THUS ACCESS PROHIBITED

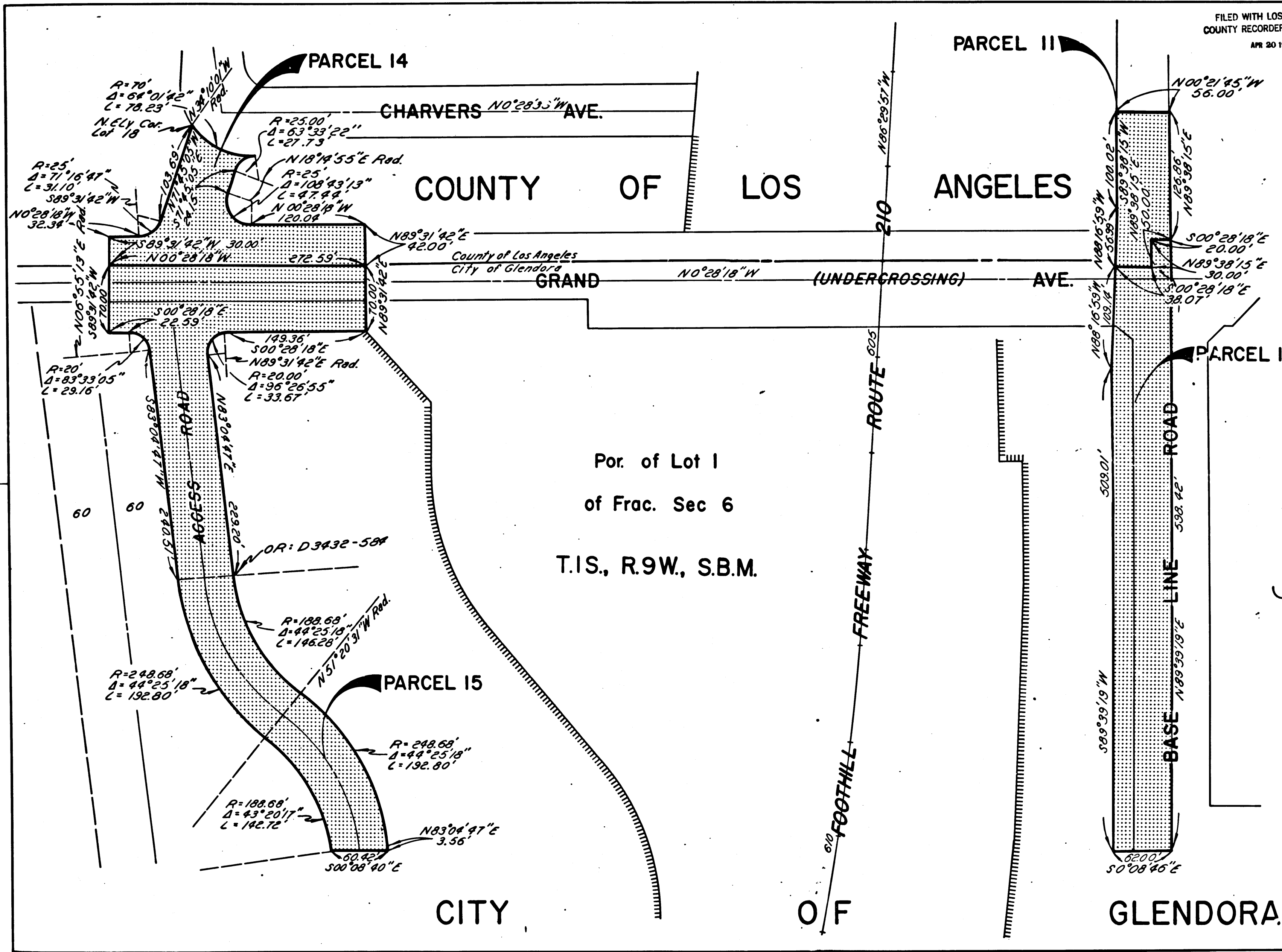
DR'N BY <i>L.W.K.</i>	R/W MAP NO. <i>F1231-6</i>
C'LC BY <i>E.J.P.</i>	REF MAP NO. <i>182-3</i>
C'K'D BY <i>G.H.</i>	REL-762,763
REVISED	764

COUNTY ENGINEER'S COPY

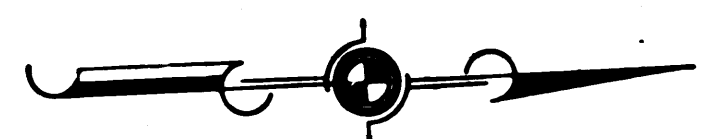
FILED WITH LOS ANGELES COUNTY RECORDER, RAY E. LEE
 APR 20 1970

DIST	COUNTY	ROUTE	POST MILES	SHEET NO.	TOTAL SHEETS
07	L.A.	210	41.1-44.2	11	12

R.W. Felt
 SENIOR HIGHWAY ENGINEER
 Feb. 18, 1970
 DATE



Por. of Lot 1
 of Frac. Sec 6
 T.1S., R.9W., S.B.M.



INTERSTATE
 STATE OF CALIFORNIA
 TRANSPORTATION AGENCY
 DEPARTMENT OF PUBLIC WORKS
 DIVISION OF HIGHWAYS

PROPOSED RELINQUISHMENT

0 50 100 150 200

AREA TO BE RELINQUISHED SHOWN THUS

ACCESS PROHIBITED

DR'N BY <i>J.W.K.</i>	R/W MAP NO. <i>F-1231-7</i>
C'LC BY <i>E.J.P.</i>	REF. MAP NO. <i>182-3</i>
C'K'D BY <i>G.H.</i>	REL-762,763
REVISED	764

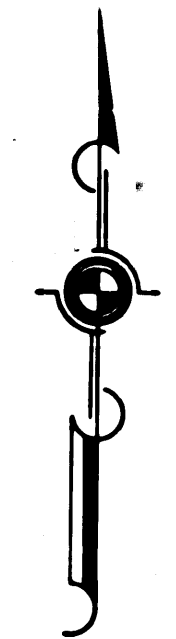
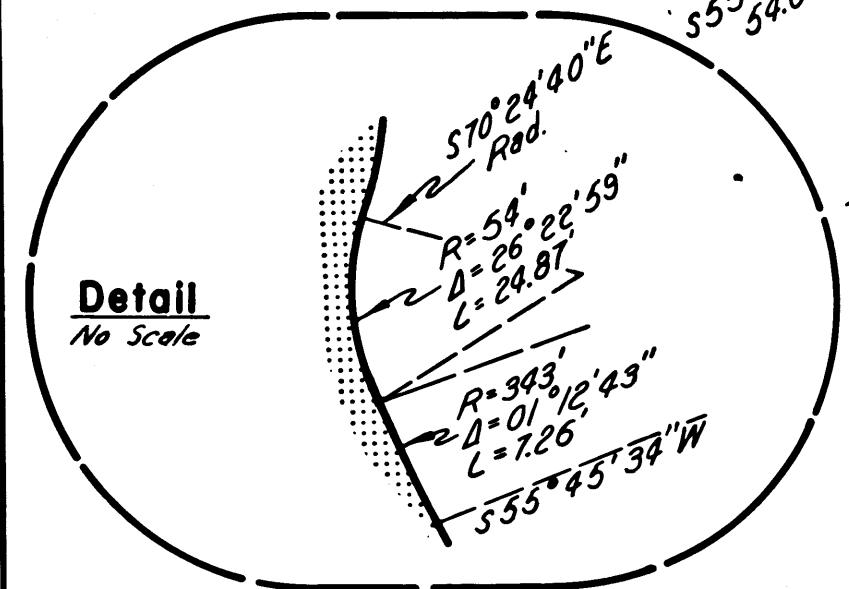
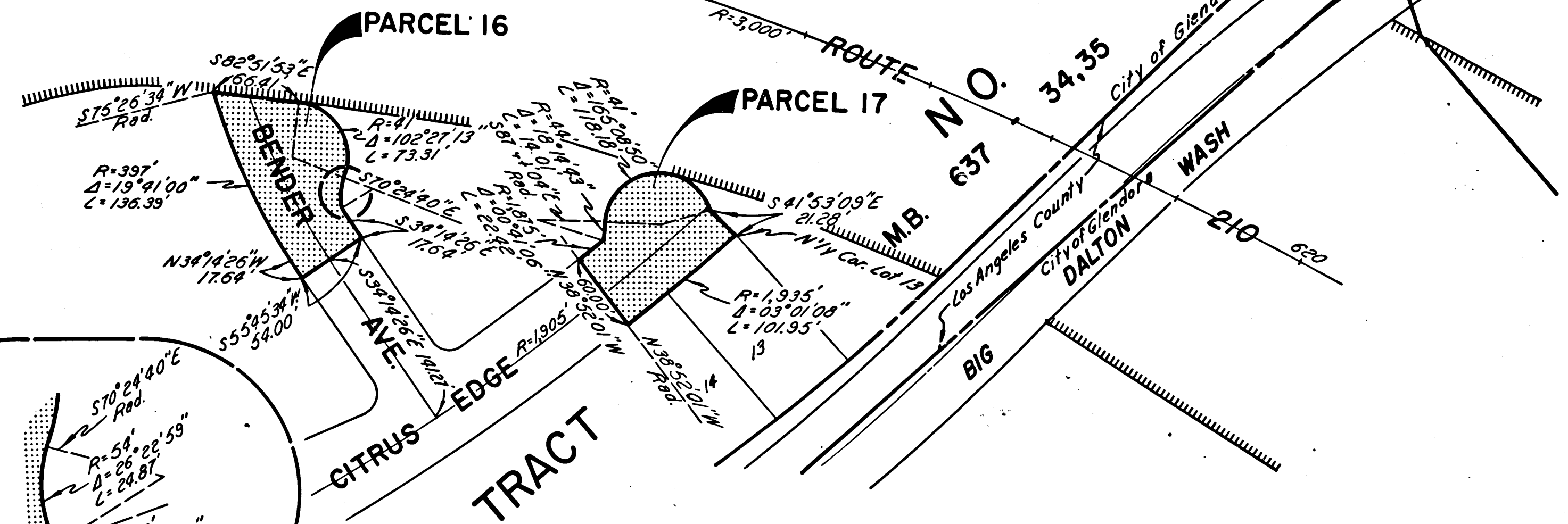
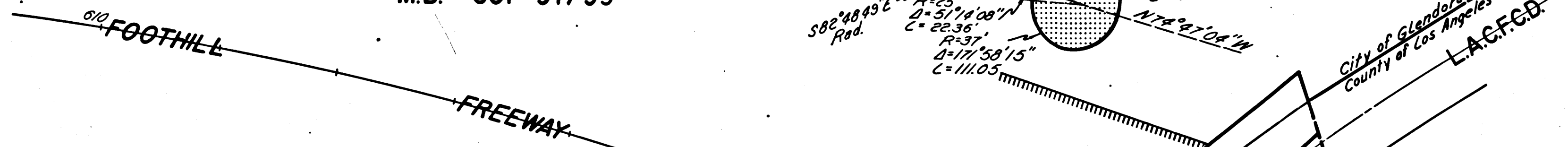
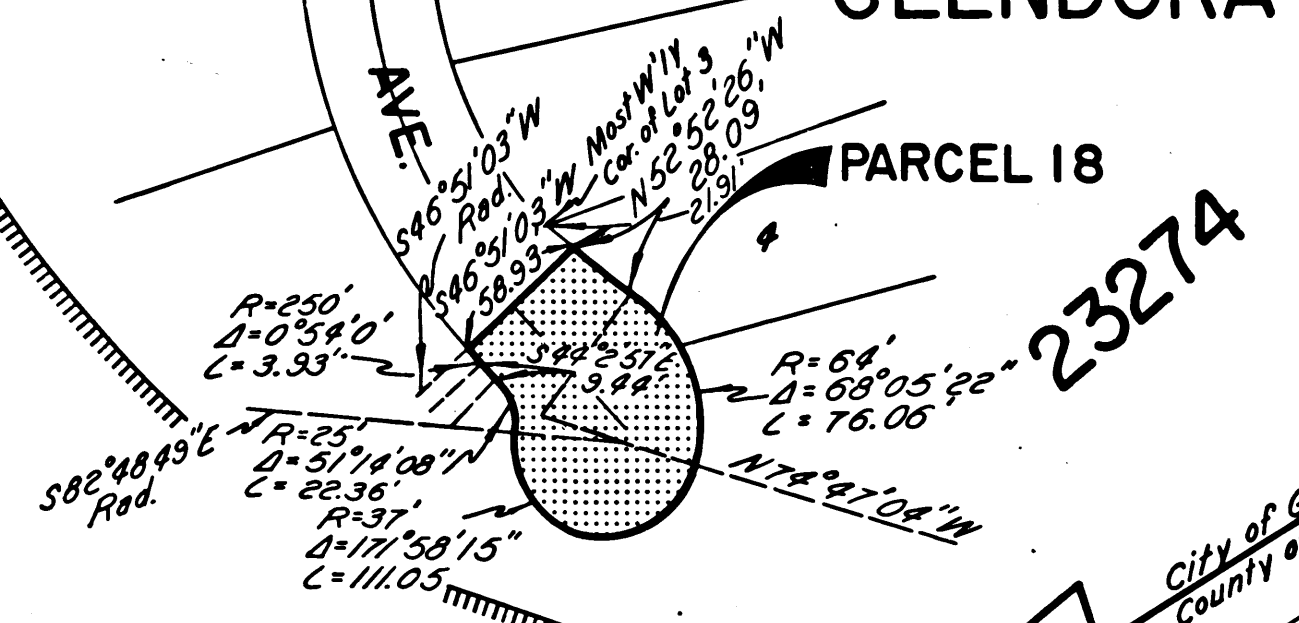
DIST	COUNTY	ROUTE	POST MILES	SHEET NO.	TOTAL SHEETS
07	L.A.	210	441-442	12	12

FILED WITH LOS ANGELES COUNTY RECORDER, RAY E. LEE

APR 30 1970
 SENIOR HIGHWAY ENGINEER
 Feb. 18, 1970
 DATE

CITY OF
 GLENDORA

TRACT NO.
 21130
 M.B. 601-97/99



INTERSTATE
 STATE OF CALIFORNIA
 TRANSPORTATION AGENCY
 DEPARTMENT OF PUBLIC WORKS
 DIVISION OF HIGHWAYS

PROPOSED RELINQUISHMENT

0 50 100 150 200

AREA TO BE RELINQUISHED SHOWN THUS

ACCESS PROHIBITED

DR'N BY U.W.K.	R/W MAP NO. F-1231-B
C'LC BY E.J.P.	REF. MAP NO. 182-3
C'K'D BY G.H.	REL-762,763
REVISED	764

COUNTY ENGINEER'S COPY