

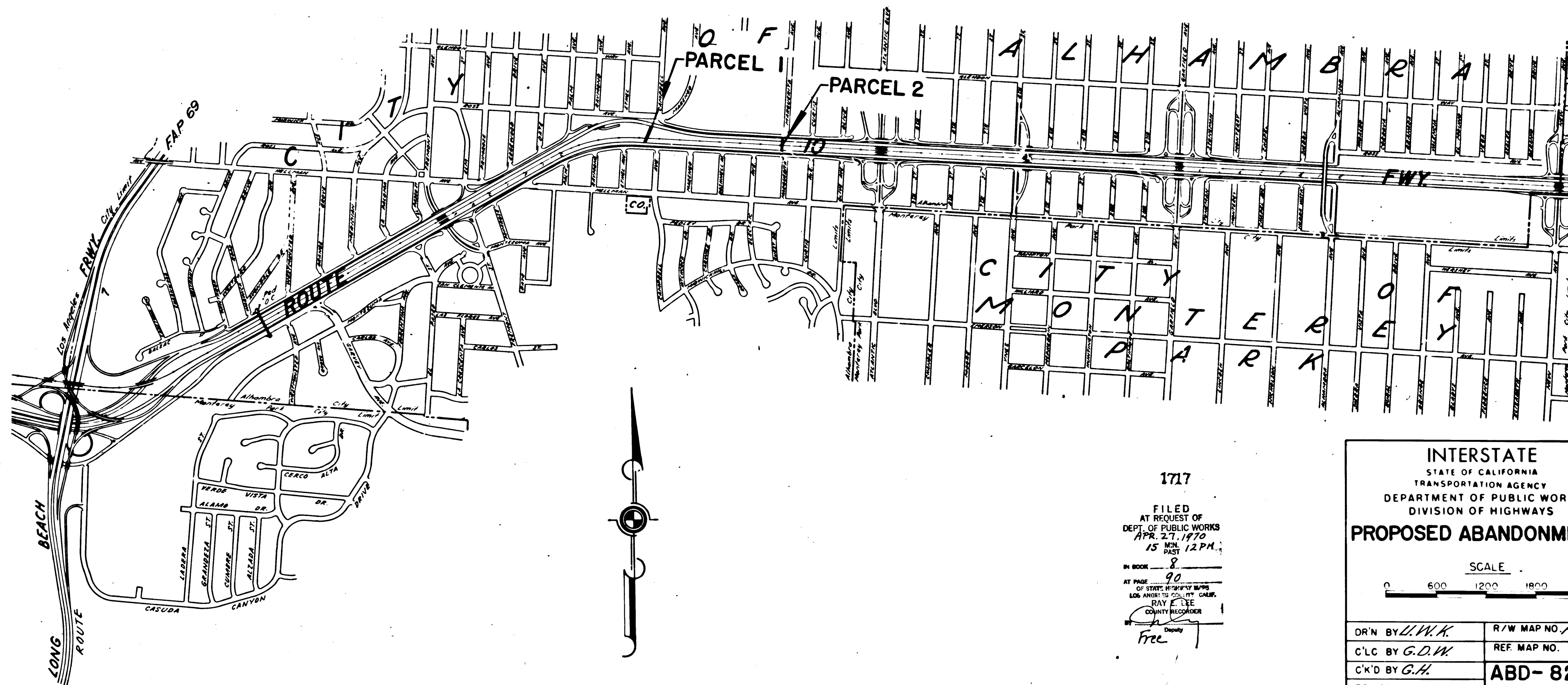
DIST	COUNTY	ROUTE	POST MILES	SHEET NO.	TOTAL SHEETS
07	L.A.	10	228-232	1	2

STATE OF CALIFORNIA  
 TRANSPORTATION AGENCY  
 DEPARTMENT OF PUBLIC WORKS  
 DIVISION OF HIGHWAYS

*A.L. Hinchey*  
 DEPUTY DISTRICT ENGINEER  
 DATE April 10, 1970

RIGHT OF WAY MAPS OF  
 STATE HIGHWAY

Along Rte. 10 Fwy. at Campbell Ave. Ped. O.C. & Marguerita Ave. Ped. O.C.



1717  
 FILED  
 AT REQUEST OF  
 DEPT. OF PUBLIC WORKS  
 APR. 27, 1970  
 15 MIN. PAST  
 12 P.M.  
 IN BOOK 8  
 AT PAGE 90  
 OF STATE HIGHWAY MAPS  
 LOG. AND INFO. COUNTY CLERK  
 RAY E. JEE  
 COUNTY RECORDER  
 Deputy  
 Free

INTERSTATE  
 STATE OF CALIFORNIA  
 TRANSPORTATION AGENCY  
 DEPARTMENT OF PUBLIC WORKS  
 DIVISION OF HIGHWAYS  
**PROPOSED ABANDONMENT**

SCALE  
 0 600 1200 1800 2400

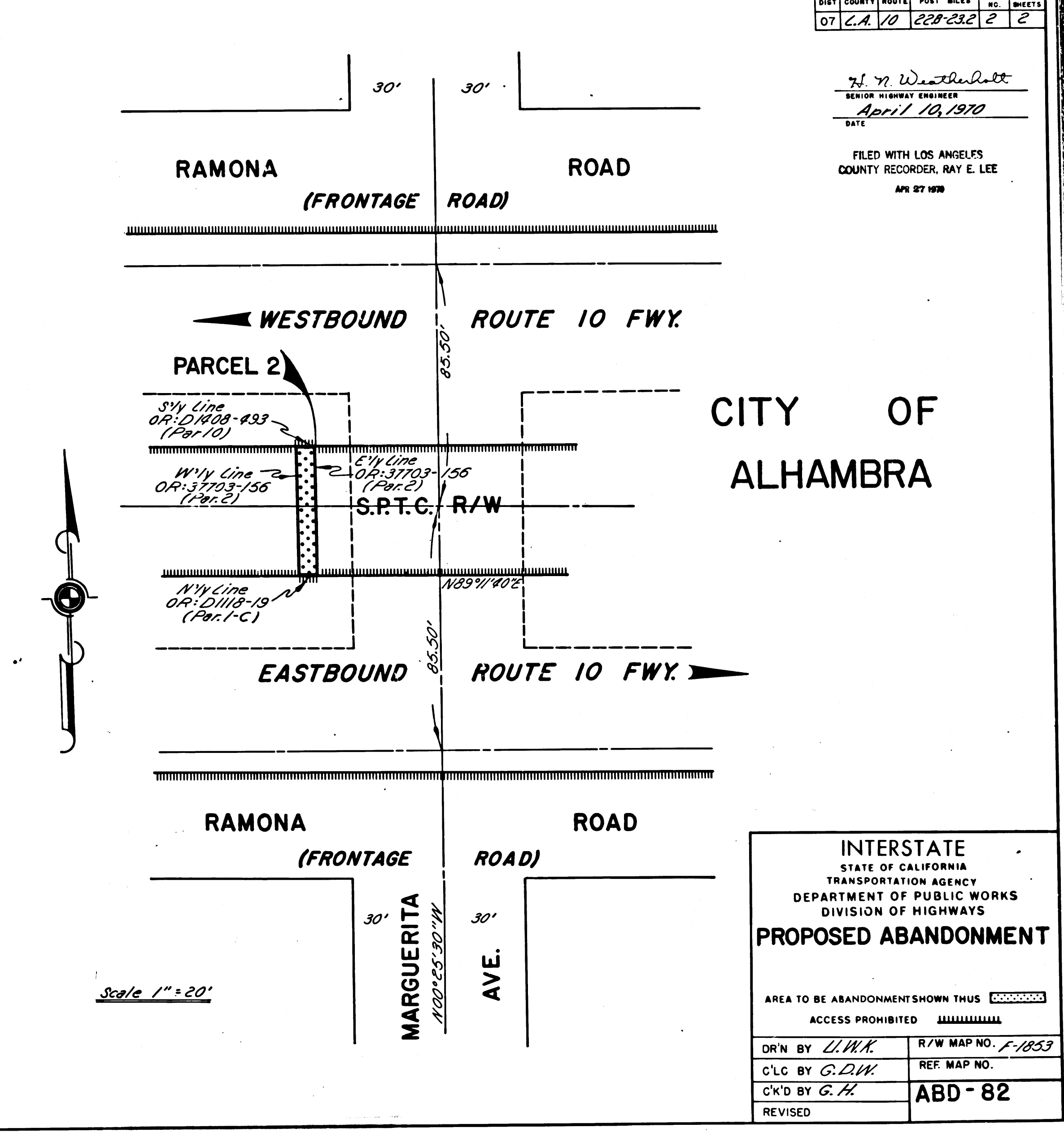
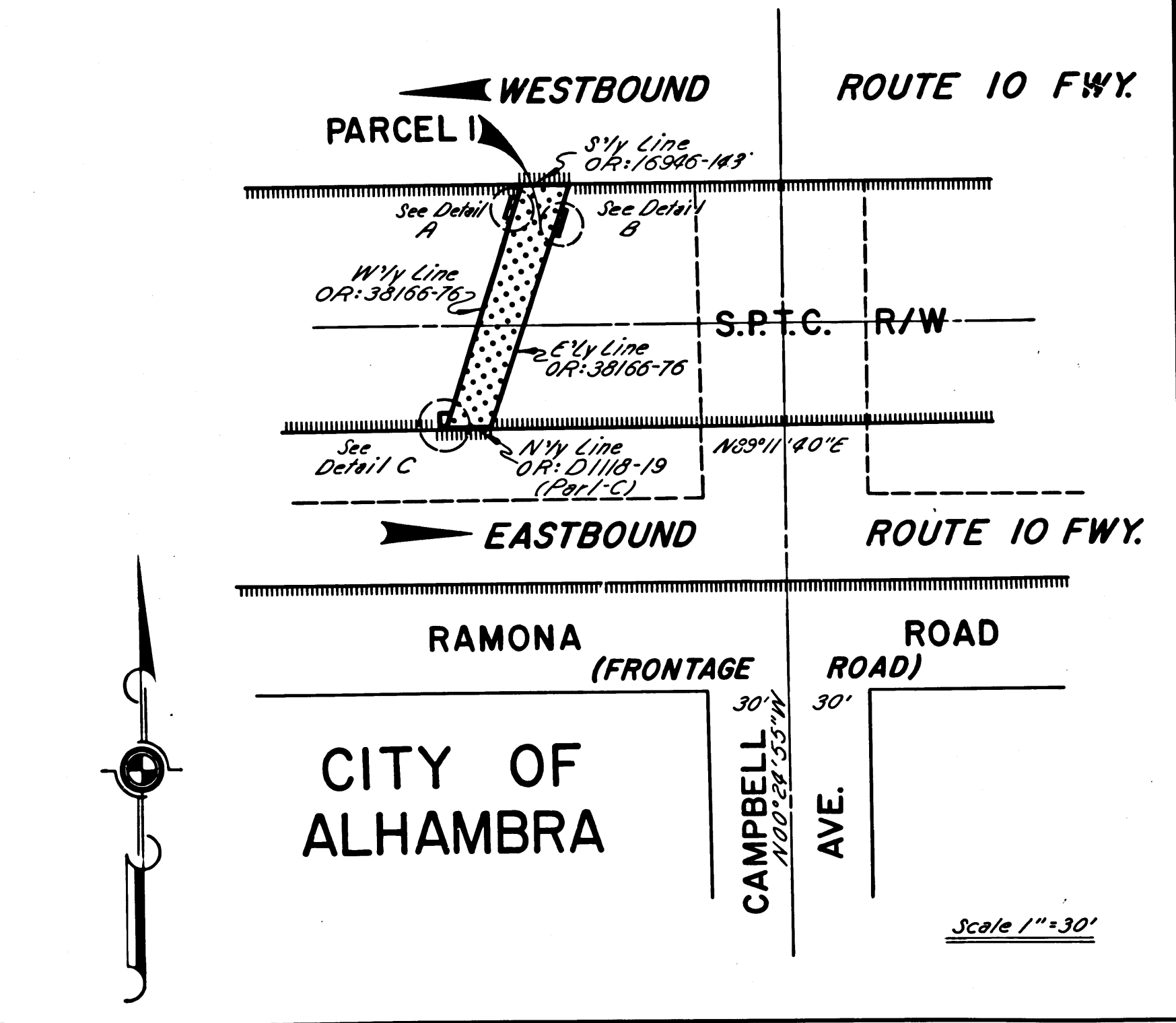
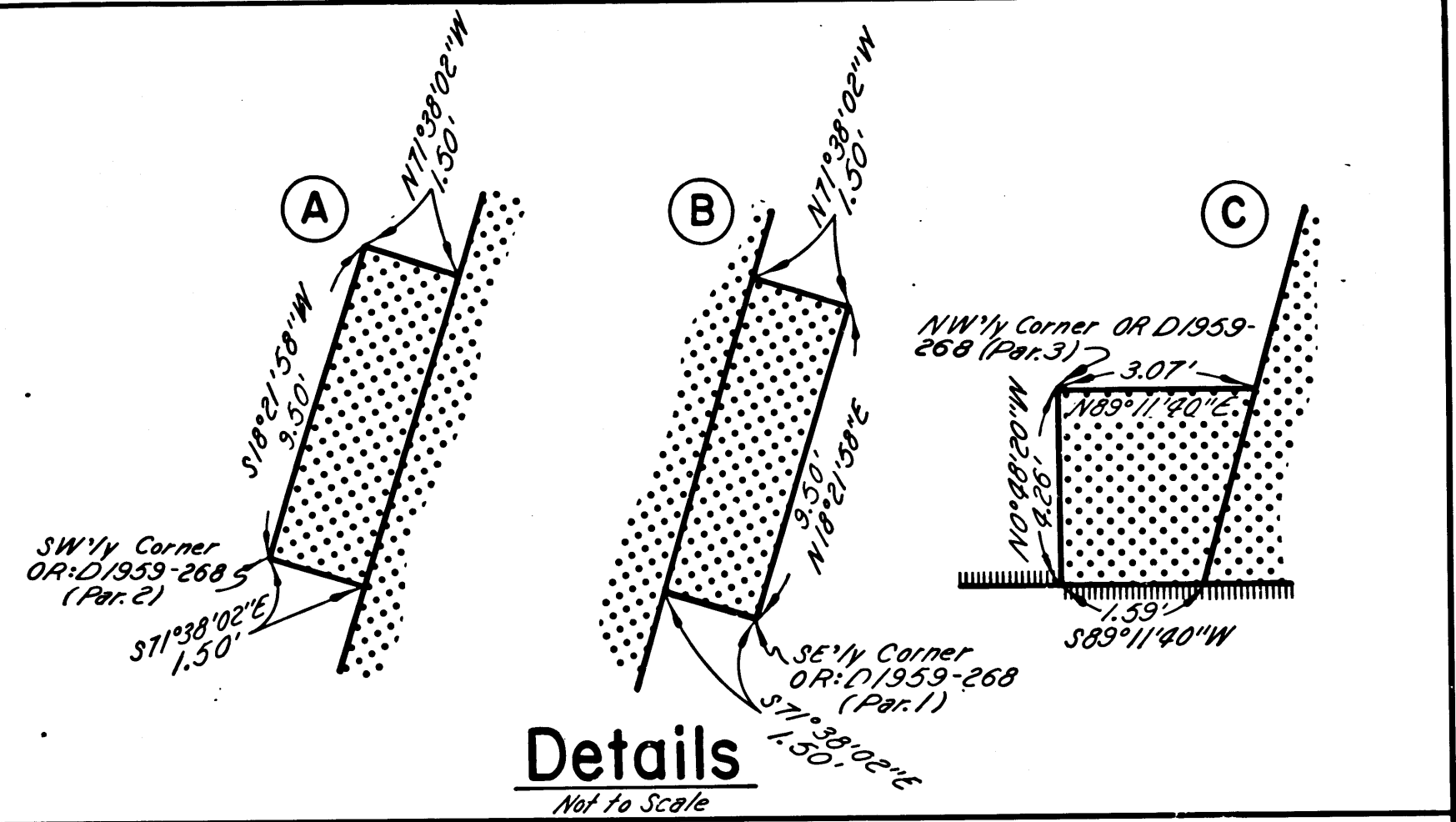
DR'N BY <i>L.V.K.</i>	R/W MAP NO. <i>F/1853</i>
C'LC BY <i>G.D.W.</i>	REF. MAP NO.
C'K'D BY <i>G.H.</i>	<b>ABD-82</b>
REVISED	

1215 4/90-91

DIST	COUNTY	ROUTE	POST MILES	SHEET NO.	TOTAL SHEETS
07	C.A.	10	228-232	2	2

H. N. Weatherholt  
 SENIOR HIGHWAY ENGINEER  
 April 10, 1970  
 DATE

FILED WITH LOS ANGELES  
 COUNTY RECORDER, RAY E. LEE  
 APR 27 1970



INTERSTATE  
 STATE OF CALIFORNIA  
 TRANSPORTATION AGENCY  
 DEPARTMENT OF PUBLIC WORKS  
 DIVISION OF HIGHWAYS

**PROPOSED ABANDONMENT**

AREA TO BE ABANDONMENT SHOWN THUS [Dotted Box]

ACCESS PROHIBITED [Hatched Box]

DR'N BY <i>L.W.K.</i>	R/W MAP NO. <i>F-1853</i>
C'LC BY <i>G.D.W.</i>	REF. MAP NO.
C'k'D BY <i>G.H.</i>	<b>ABD - 82</b>
REVISED	

COUNTY ENGINEER'S COPY