

DIST	COUNTY	ROUTE	POST MILES	SHEET NO.	TOTAL SHEETS
07	LA	5	65.8	1	2

STATE OF CALIFORNIA  
 TRANSPORTATION AGENCY  
 DEPARTMENT OF PUBLIC WORKS  
 DIVISION OF HIGHWAYS

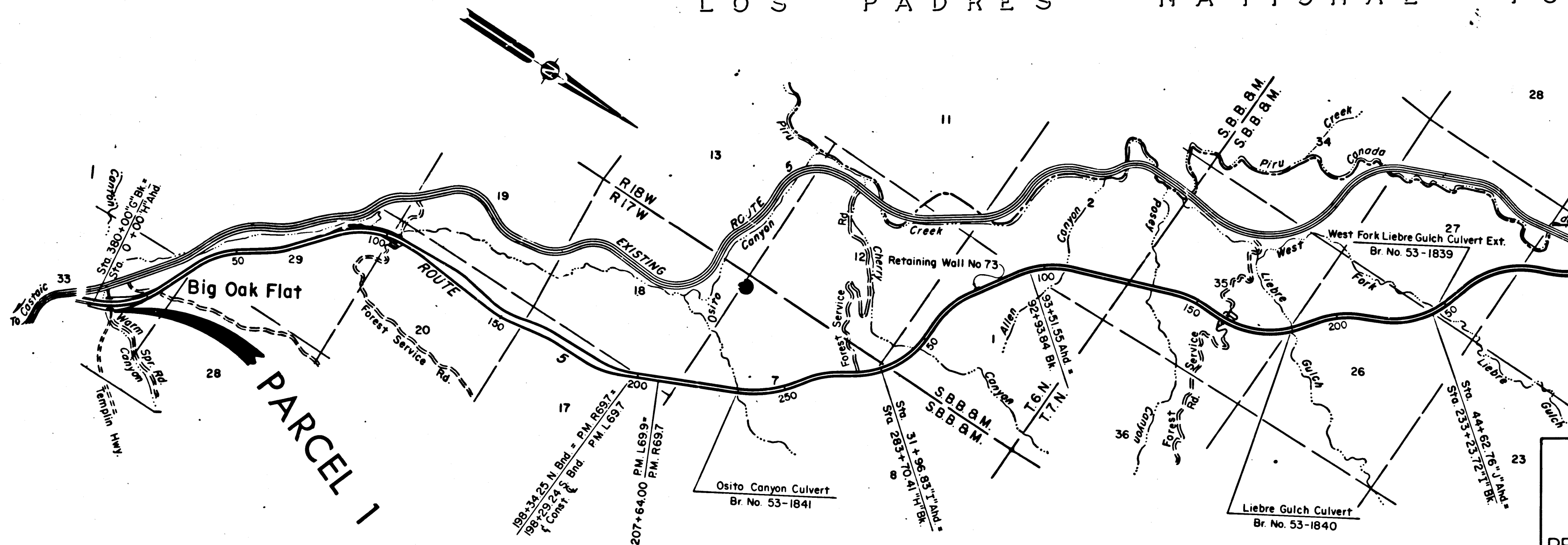
*Art Hamilton*  
 DEPUTY DISTRICT ENGINEER  
 March 9, 1970  
 DATE

RIGHT OF WAY MAPS OF  
**STATE HIGHWAY**  
 In Los Angeles County at Templin Highway and Route 5 Freeway

2331

FILED  
 AT REQUEST OF  
 DEPT. OF PUBLIC WORKS  
 MAY 18, 1970  
 12 MIN. 1 P.M.  
 IN BOOK 8  
 AT PAGE 92  
 OF STATE HIGHWAY MAPS  
 LOS ANGELES COUNTY, CALIF.  
 RAY E. LEE  
 COUNTY RECORDER  
 BY *[Signature]*  
 Deputy Free

LOS PADRES NATIONAL FOREST



**INTERSTATE**  
 STATE OF CALIFORNIA  
 TRANSPORTATION AGENCY  
 DEPARTMENT OF PUBLIC WORKS  
 DIVISION OF HIGHWAYS  
**PROPOSED RELINQUISHMENT**

SCALE IN FEET  
 0 2000 4000 6000 8000

DR'N BY GDW	R/W MAP NO. F 1315
C'LC BY GDW	REF. MAP NO.
C'K'D BY GH	<b>REL-775</b>
REVISED	

COUNTY ENGINEER'S COPY

8/92

DIST	COUNTY	ROUTE	POST MILES	SHEET NO.	TOTAL SHEETS
07	LA	5	65.8	2	2

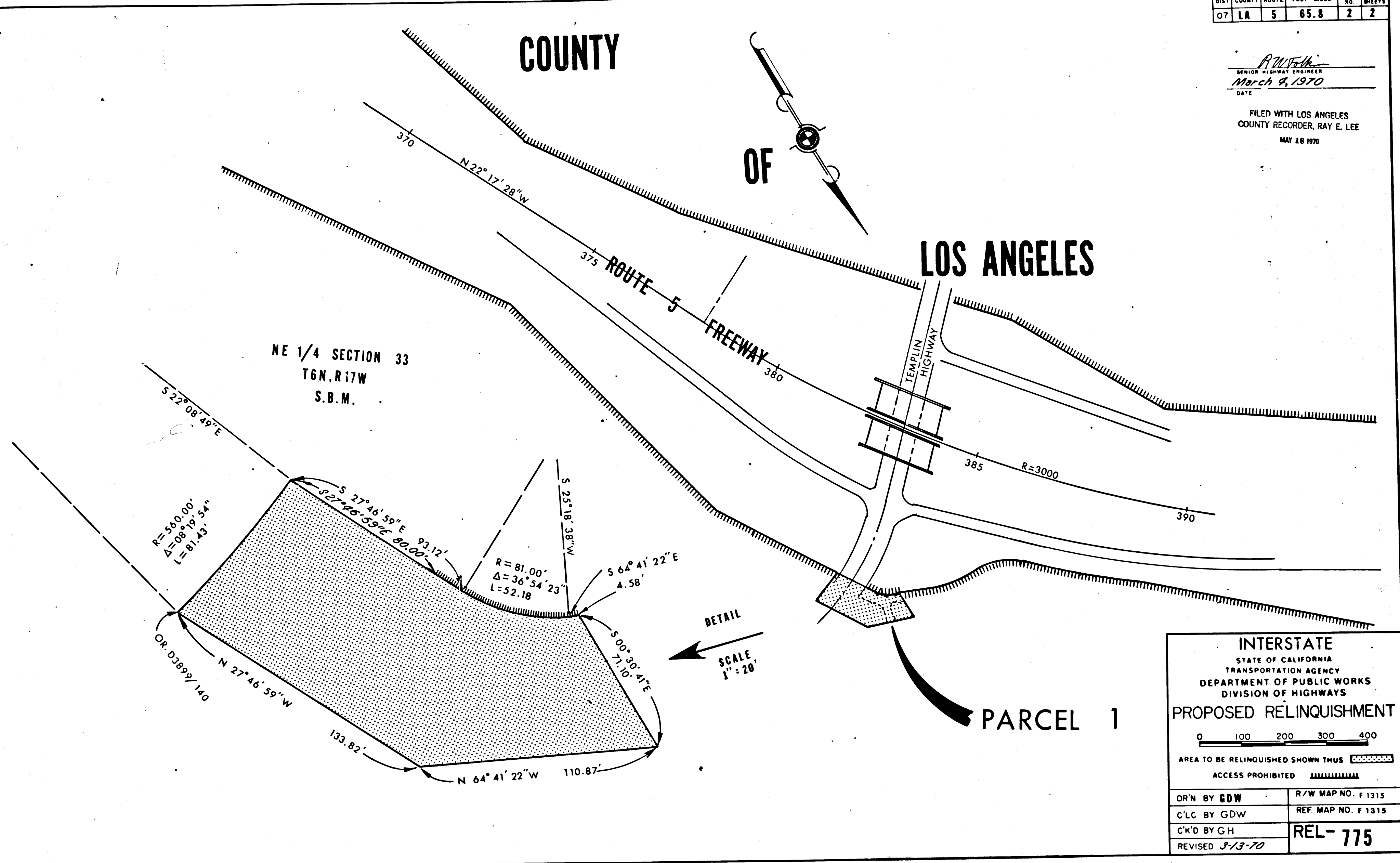
*R. W. Walker*  
 SENIOR HIGHWAY ENGINEER  
 March 9, 1970  
 DATE

FILED WITH LOS ANGELES  
 COUNTY RECORDER, RAY E. LEE  
 MAY 18 1970

COUNTY

OF

LOS ANGELES



**INTERSTATE**  
 STATE OF CALIFORNIA  
 TRANSPORTATION AGENCY  
 DEPARTMENT OF PUBLIC WORKS  
 DIVISION OF HIGHWAYS

**PROPOSED RELINQUISHMENT**

0 100 200 300 400

AREA TO BE RELINQUISHED SHOWN THUS

ACCESS PROHIBITED

DR'N BY GDW	R/W MAP NO. F 1315
C'LC BY GDW	REF. MAP NO. F 1315
CK'D BY GH	<b>REL-775</b>
REVISED 3-13-70	

COUNTY ENGINEER'S COPY