

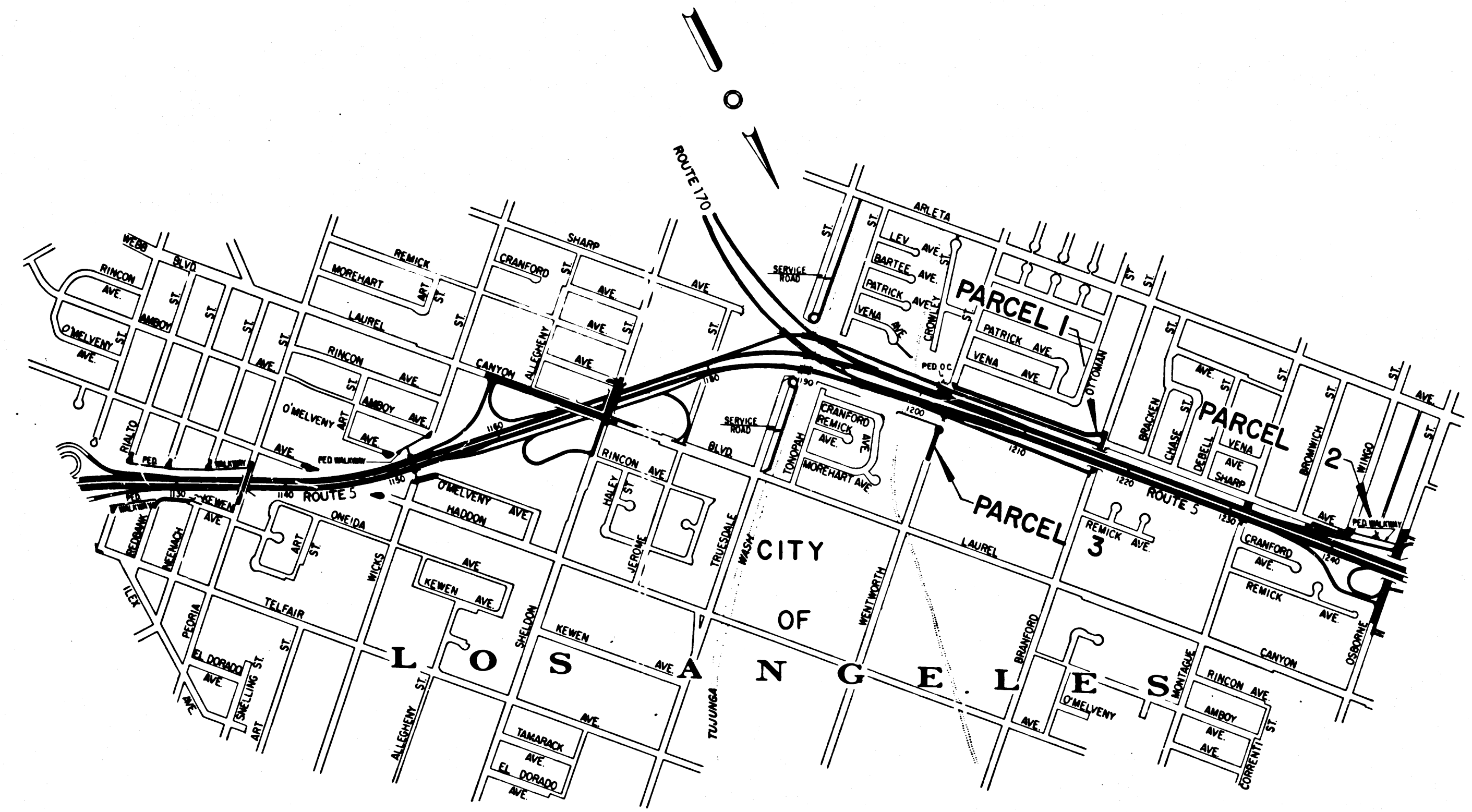
DIST	COUNTY	ROUTE	POST MILES	SHEET NO.	TOTAL SHEETS
07	L.A.	5	36.8-37.2	1	4

Ad. Hanielbach
 DEPT. DISTRICT ENGINEER
 March 18, 1970
 DATE

2332

FILED
 AT REQUEST OF
 DEPT. OF PUBLIC WORKS
 MAY 18, 1970
 12 PAST
 IN BOOK 8
 AT PAGE 94
 OF STATE HIGHWAY MAP
 LOS ANGELES COUNTY, CALIF.
 RAY E. LEE
 COUNTY RECORDER
 BY *[Signature]*
 Deposited
 Free

STATE OF CALIFORNIA
 TRANSPORTATION AGENCY
 DEPARTMENT OF PUBLIC WORKS
 DIVISION OF HIGHWAYS
 RIGHT OF WAY MAPS OF
STATE HIGHWAY
 In the City of Los Angeles, between Tonopah St. and Osborne St.



INTERSTATE
 STATE OF CALIFORNIA
 TRANSPORTATION AGENCY
 DEPARTMENT OF PUBLIC WORKS
 DIVISION OF HIGHWAYS
 PROPOSED RELINQUISHMENT

-SCALE-
 0 250 500 1000 1500 2000 FEET

DR'N BY <i>L.W.K.</i>	R/W MAP NO. <i>F-1296</i>
C'LC BY <i>G.D.W.</i>	REF. MAP NO. <i>135-7</i>
C'K'D BY <i>G.H.</i>	REL-741
REVISED	

COUNTY ENGINEER'S COPY

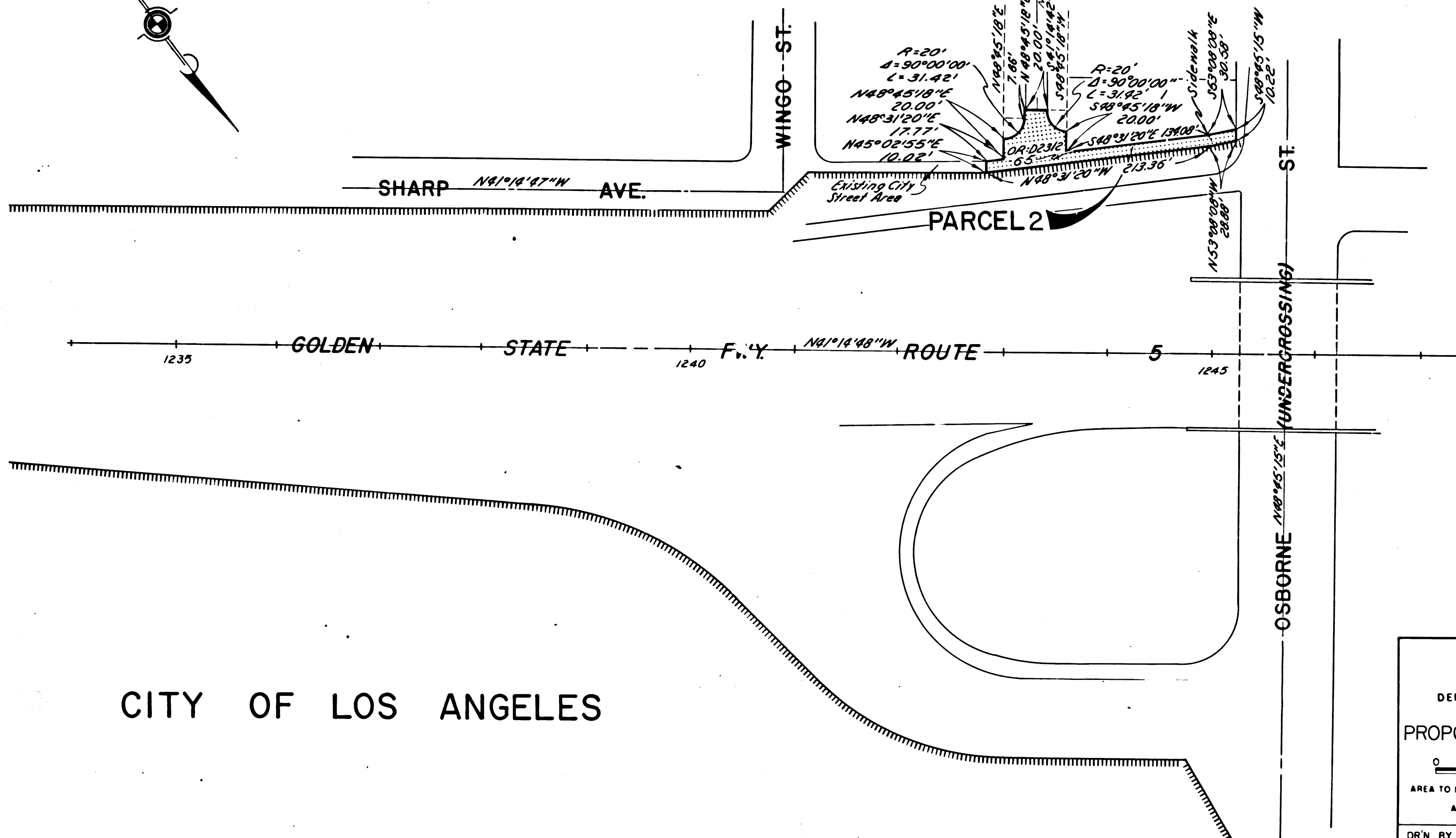
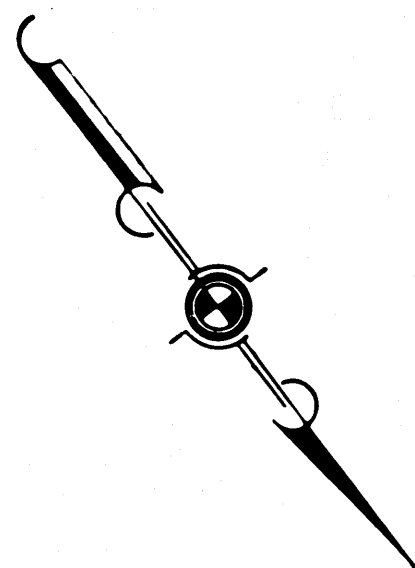
8194-

DIST	COUNTY	ROUTE	POST MILES	SHEET NO.	TOTAL SHEETS
07	L.A.	5	36.4-37.4	2	4

H. T. Weatherholt
 SENIOR HIGHWAY ENGINEER
 March 18, 1970
 DATE

FILED WITH LOS ANGELES
 COUNTY RECORDER, RAY E. LEE
 MAY 18 1970

TRACT NO. 15902
 M.B. 348 - 39, 40



CITY OF LOS ANGELES

INTERSTATE
 STATE OF CALIFORNIA
 TRANSPORTATION AGENCY
 DEPARTMENT OF PUBLIC WORKS
 DIVISION OF HIGHWAYS
 PROPOSED RELINQUISHMENT

0 50 100 150 200

AREA TO BE RELINQUISHED SHOWN THUS [stippled pattern]
 ACCESS PROHIBITED [hatched pattern]

DR'N BY <i>L.W.K.</i>	R/W MAP NO. <i>F-1297</i>
C'LC BY <i>G.D.W.</i>	REF. MAP NO. <i>135-2</i>
C'K'D BY <i>G.H.</i>	REL-741
REVISED	

COUNTY ENGINEER'S COPY

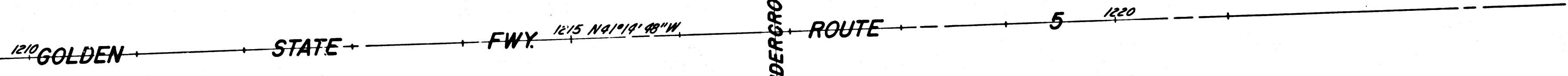
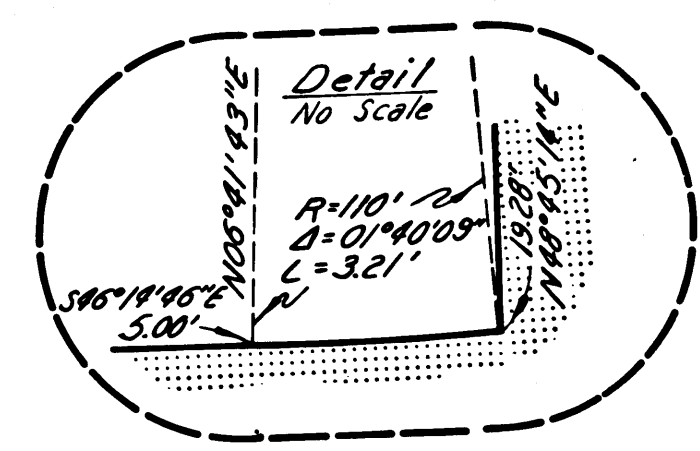
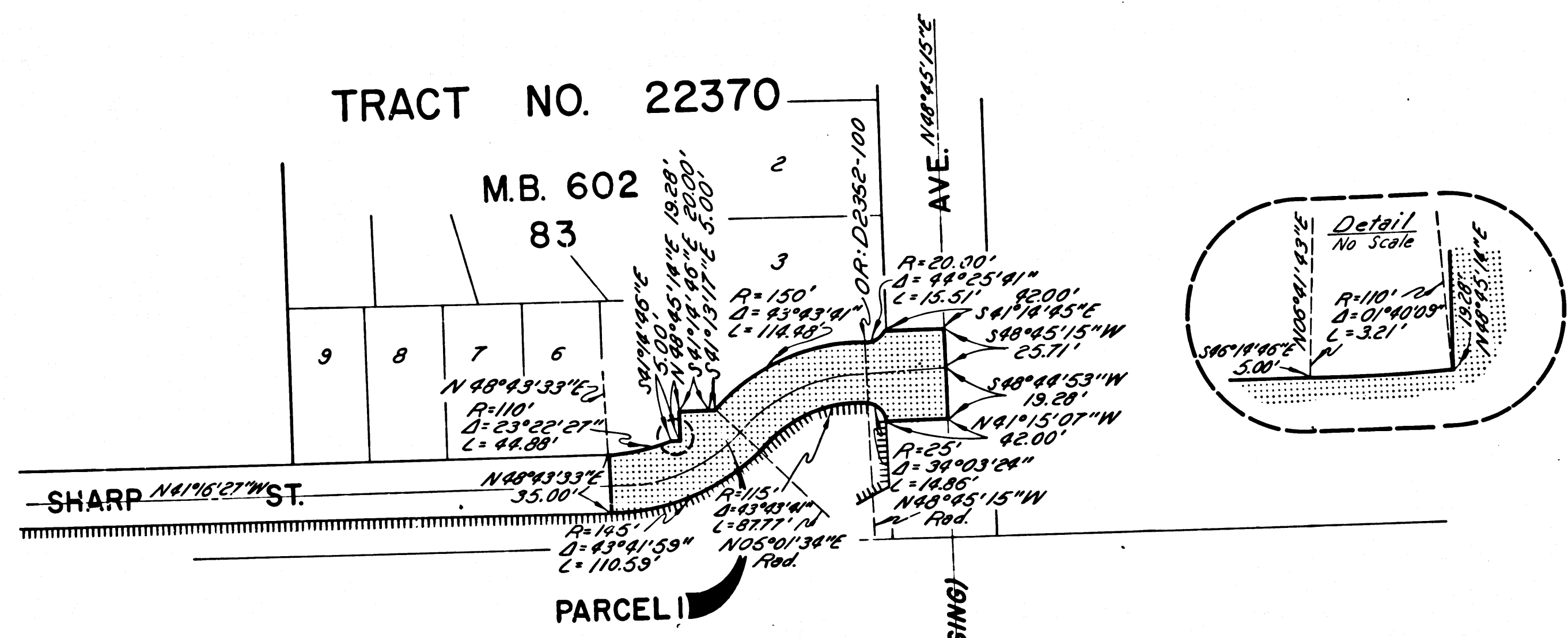
DIST	COUNTY	ROUTE	POST MILES	SHEET NO.	TOTAL SHEETS
07	L.A.	5	36.4-37.4	3	4

H. N. Weatherholt
 SENIOR HIGHWAY ENGINEER
 March 18, 1970
 DATE

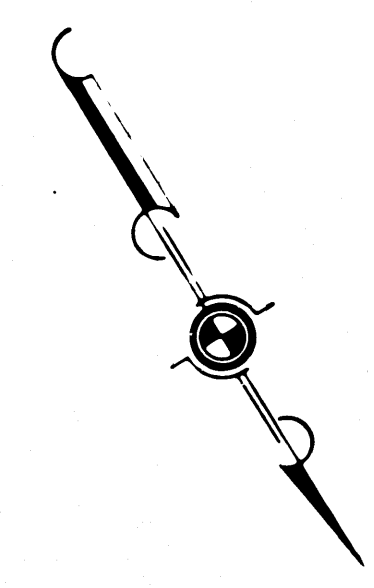
FILED WITH LOS ANGELES
 COUNTY RECORDER, RAY E. LEE
 MAY 18 1970

TRACT NO. 22370

M.B. 602
 83



CITY OF LOS ANGELES



INTERSTATE
 STATE OF CALIFORNIA
 TRANSPORTATION AGENCY
 DEPARTMENT OF PUBLIC WORKS
 DIVISION OF HIGHWAYS

PROPOSED RELINQUISHMENT

0 50 100 150 200

AREA TO BE RELINQUISHED SHOWN THUS [hatched pattern]

ACCESS PROHIBITED [hatched pattern]

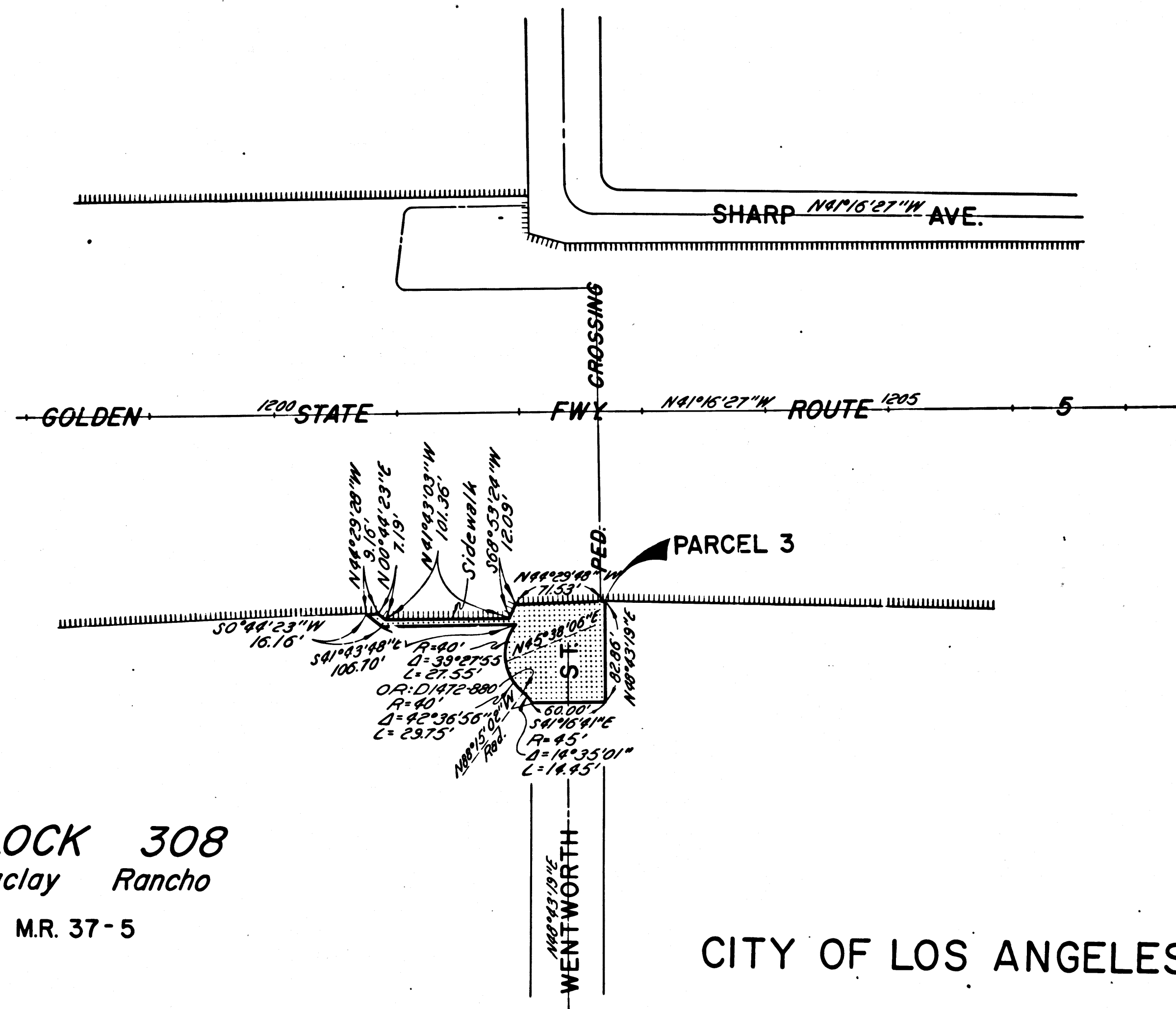
DR'N BY <i>L.W.K.</i>	R/W MAP NO. <i>F1297</i>
C/LC BY <i>G.D.W.</i>	REF. MAP NO. <i>135-7</i>
C/K'D BY <i>G.H.</i>	REL-741
REVISED	

COUNTY ENGINEER'S COPY

DIST	COUNTY	ROUTE	POST MILES	SHEET NO.	TOTAL SHEETS
07	L.A.	5	36.9-37.0	4	4

H. M. Weatherholt
 SENIOR HIGHWAY ENGINEER
 March 18, 1970
 DATE

FILED WITH LOS ANGELES
 COUNTY RECORDER, RAY E. LEE
 MAY 18 1970



BLOCK 308
 Maclay Rancho
 M.R. 37-5

CITY OF LOS ANGELES

INTERSTATE
 STATE OF CALIFORNIA
 TRANSPORTATION AGENCY
 DEPARTMENT OF PUBLIC WORKS
 DIVISION OF HIGHWAYS

PROPOSED RELINQUISHMENT

0 50 100 150 200

AREA TO BE RELINQUISHED SHOWN THUS [Dotted Pattern]

ACCESS PROHIBITED [Hatched Pattern]

DR'N BY <i>L.W.K.</i>	R/W MAP NO. <i>F 1296</i>
C'LC BY <i>G.D.W.</i>	REF. MAP NO. <i>135-7</i>
C'K'D BY <i>G.H.</i>	REL-741
REVISED	

COUNTY ENGINEER'S COPY