

DIST	COUNTY	ROUTE	POST MILES	SHEET NO.	TOTAL SHEETS
07	L.A.	30	2.3	1	2

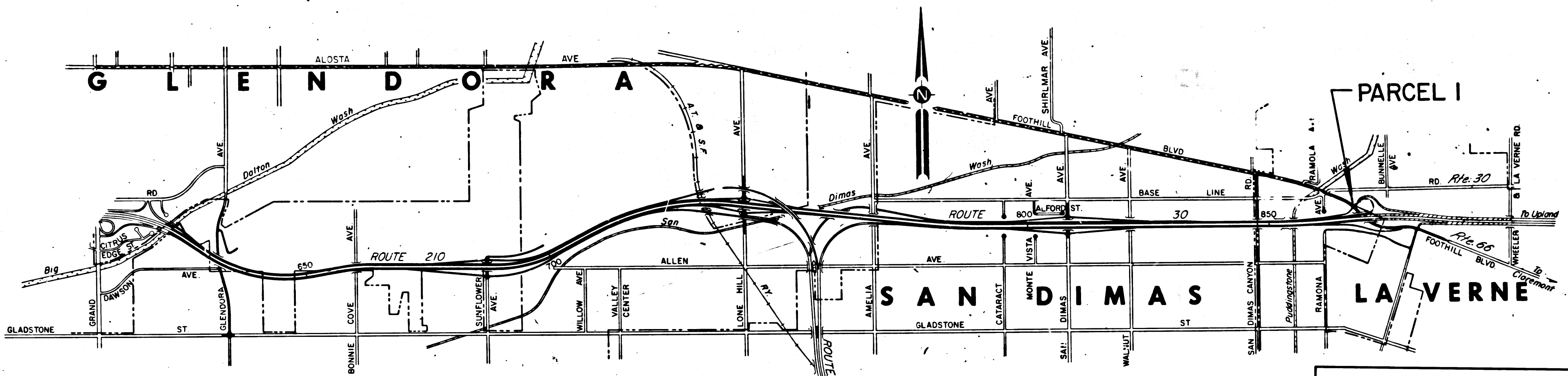
STATE OF CALIFORNIA
 TRANSPORTATION AGENCY
 DEPARTMENT OF PUBLIC WORKS
 DIVISION OF HIGHWAYS

Art. H. H. H.
 DEPUTY DISTRICT ENGINEER
 April 3, 1971
 DATE

RIGHT OF WAY MAPS OF
STATE HIGHWAY

IN THE CITY OF LA VERNE 600 FT. EAST OF RAMONA AVE.

FILED
 AT REQUEST OF
 DEPT. OF PUBLIC WORKS
 APR 30, 1971
 5:00 PM
 PAST 1 PM
 IN BOOK 9
 PAGE 49
 OF STATE HIGHWAY MAPS
 LOS ANGELES COUNTY, CALIF.
 COUNTY RECORDER
J. L. H.
 Deputy *Free*



STATE OF CALIFORNIA
 TRANSPORTATION AGENCY
 DEPARTMENT OF PUBLIC WORKS
 DIVISION OF HIGHWAYS

PROPOSED ABANDONMENT

SCALE IN FEET
 0 1000 2000 3000

DR'N BY <i>L.W.K.</i>	R/W MAP NO. <i>F-1235</i>
C'LC BY <i>O.K.F.</i>	REF MAP NO. <i>184-11</i>
C'K'D BY <i>G.J.H.</i>	ABD-83
REVISED <i>2-19-71</i>	

COUNTY ENGINEER'S COPY

Por. of Government Lot I of Frac. Sec. 2

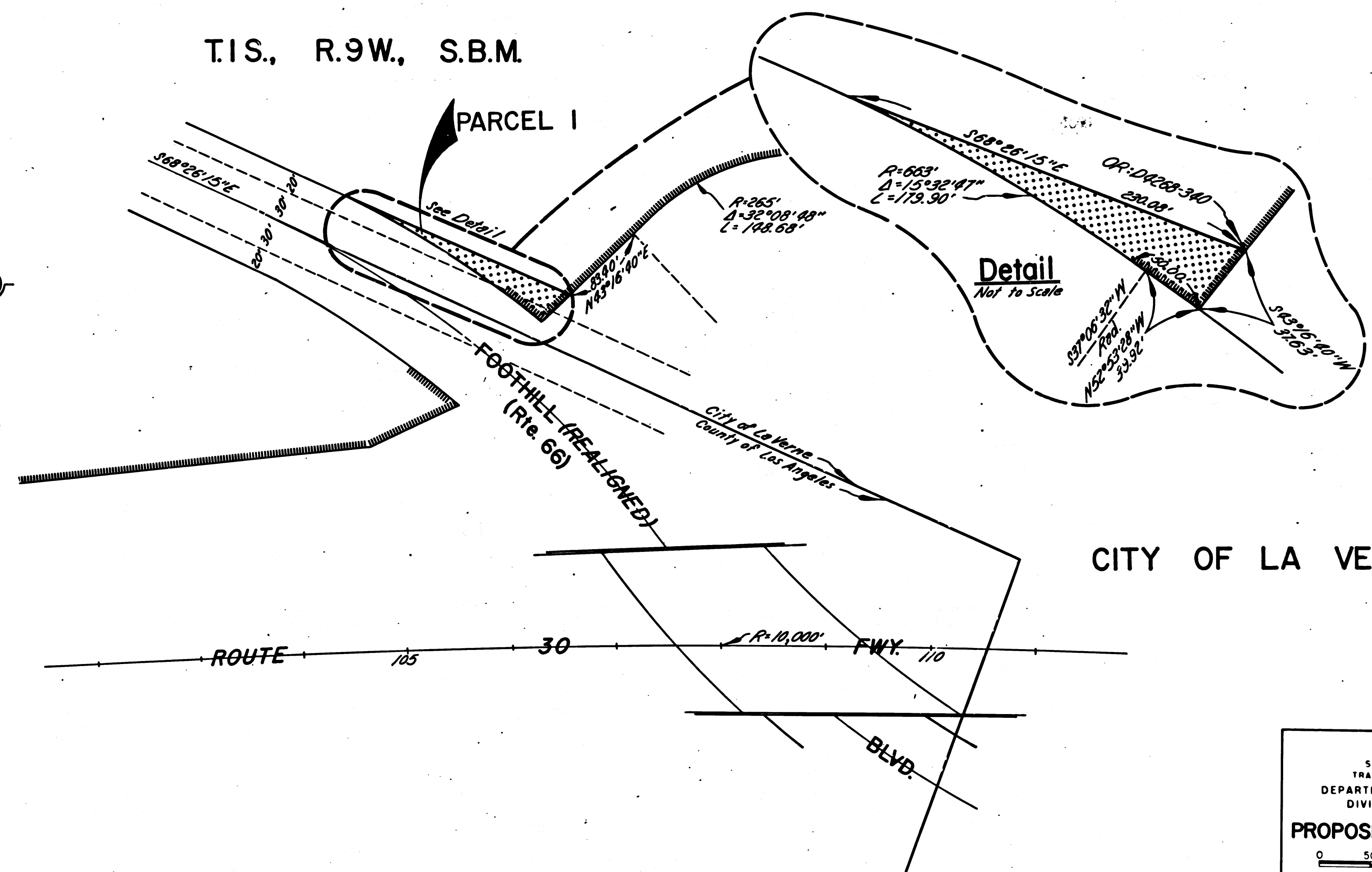
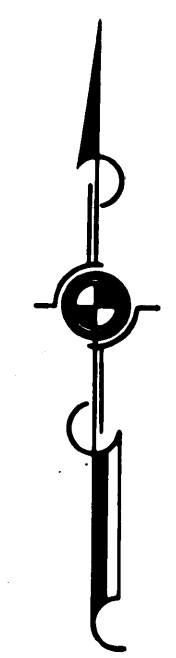
T.1S., R.9W., S.B.M.

BOOK 9 PAGE 50

DIST	COUNTY	ROUTE	POST MILES	SHEET NO.	TOTAL SHEETS
07	L.A.	30	2.3	2	2

B.W.F.H.
 SENIOR HIGHWAY ENGINEER
 April 5, 1971
 DATE

FILED WITH LOS ANGELES
 COUNTY RECORDER.
 APR 30 1971



CITY OF LA VERNE

STATE OF CALIFORNIA
 TRANSPORTATION AGENCY
 DEPARTMENT OF PUBLIC WORKS
 DIVISION OF HIGHWAYS

PROPOSED ABANDONMENT

0 50 100 150 200

AREA TO BE ABANDONED SHOWN THUS

ACCESS PROHIBITED

DR'N BY <i>L.W.K.</i>	R/W MAP NO. 1235
C'LC BY <i>O.K.F.</i>	REF. MAP NO. 188-11
C'K'D BY <i>G.J.H.</i>	
REVISED	ABD-83

COUNTY ENGINEER'S COPY