

DIST	COUNTY	ROUTE	POST MILES	SHEET NO.	TOTAL SHEETS
07	L.A.	210	302-323	1	5

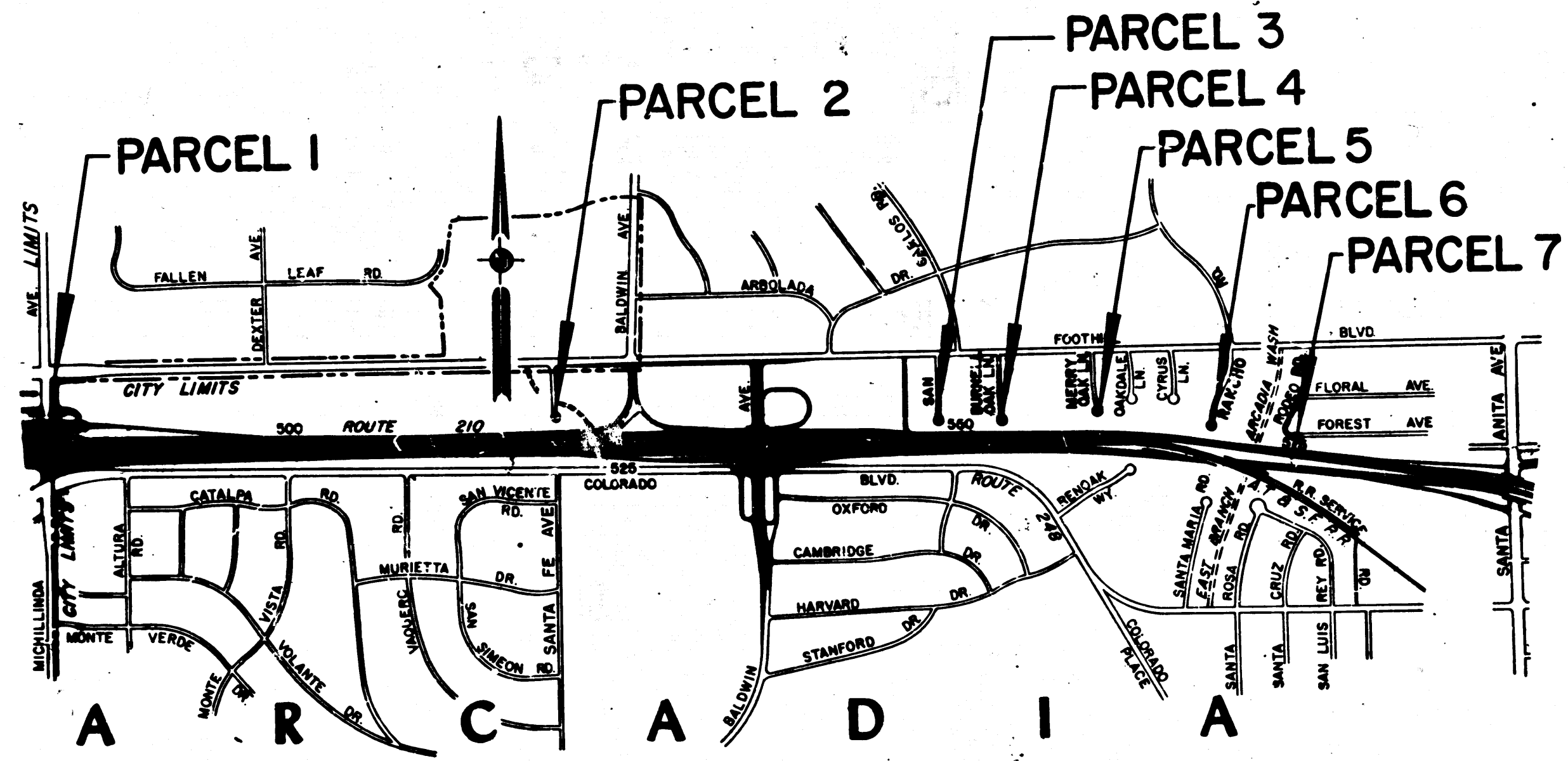
STATE OF CALIFORNIA
 TRANSPORTATION AGENCY
 DEPARTMENT OF PUBLIC WORKS
 DIVISION OF HIGHWAYS

A. J. Himmelhoch
 DEPUTY DISTRICT ENGINEER
 REGISTERED CIV. ENGINEER NO. 6416
 January 18, 1972
 DATE

RIGHT OF WAY MAPS OF
STATE HIGHWAY

In the City of Arcadia on Route 210 between
 Michillinda Avenue and Santa Anita Avenue

3811
 FILED
 AT REQUEST OF
 DEPT. OF PUBLIC WORKS
 MAR 21 1972
 29 PAST 3PM
 IN BOOK 10
 AT PAGE 3
 OF STATE HIGHWAY MAPS
 LOS ANGELES COUNTY, CALIF.
 COUNTY RECORDER
 Deputy *Erre*



INTERSTATE
 STATE OF CALIFORNIA
 TRANSPORTATION AGENCY
 DEPARTMENT OF PUBLIC WORKS
 DIVISION OF HIGHWAYS
PROPOSED RELINQUISHMENT

0 500 1000 1500 2000

DR'N BY <i>J.W.K.</i>	R/W MAP NO.
C'LC BY <i>J.M.</i>	REF. MAP NO. <i>181-12</i>
C'K'D BY <i>H.L.</i>	REL-826
REVISED	

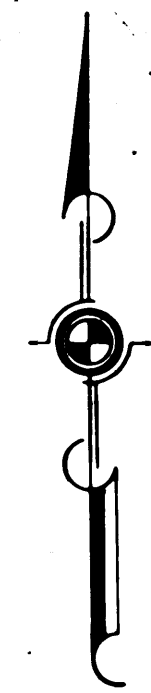
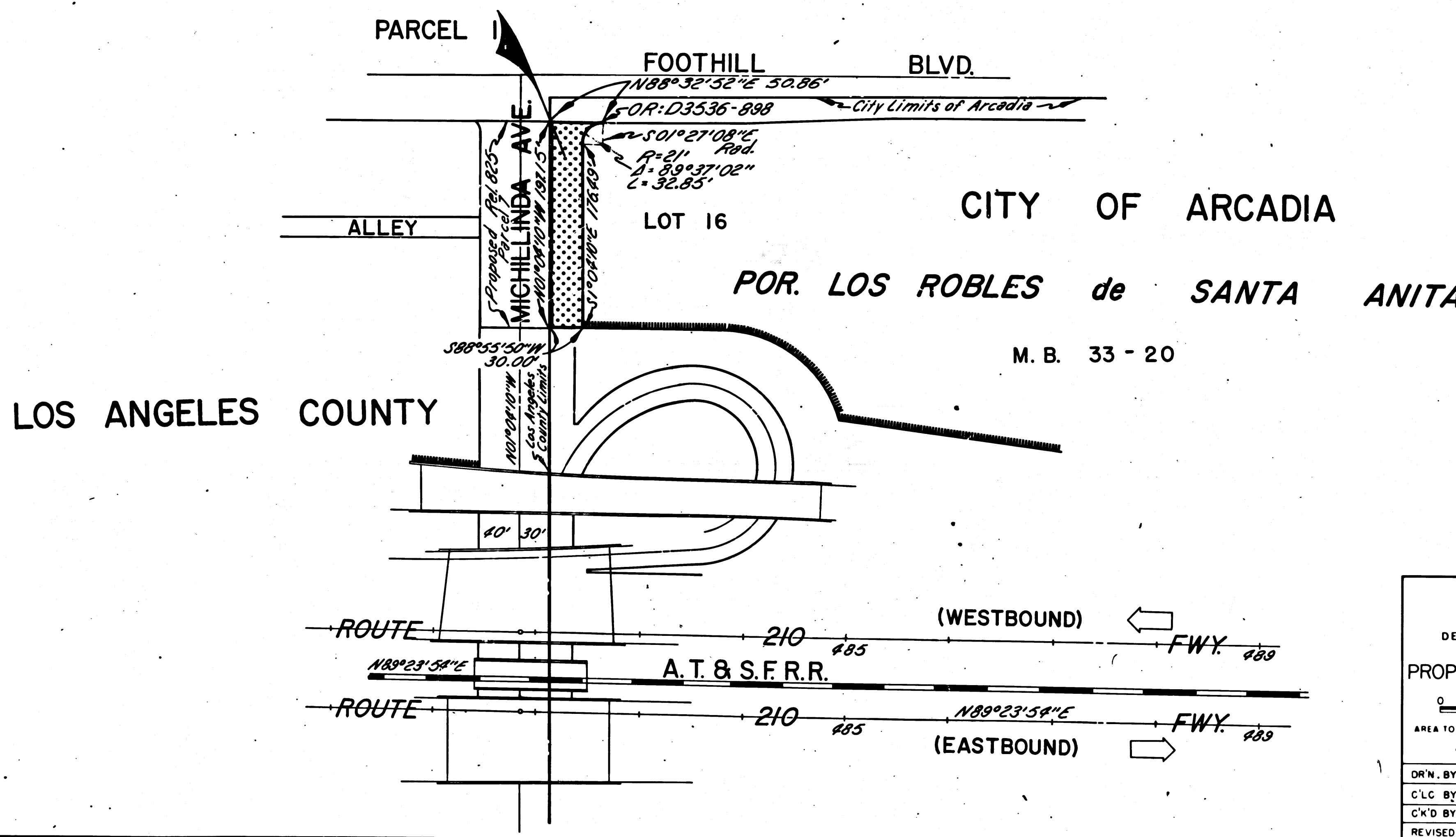
COUNTY ENGINEER'S COPY

BOOK
 PAGE

FILED WITH LOS ANGELES COUNTY RECORDER
MAR 21 1972

DIST	COUNTY	ROUTE	POST MILES	SHEET NO	TOTAL SHEETS
07	L.A.	210	302-323	2	3

R. W. Felton
DISTRICT RIGHT OF WAY ENGINEER
January 18, 1972
DATE



INTERSTATE
STATE OF CALIFORNIA
TRANSPORTATION AGENCY
DEPARTMENT OF PUBLIC WORKS
DIVISION OF HIGHWAYS

PROPOSED RELINQUISHMENT

0 50 100 150 200

AREA TO BE RELINQUISHED SHOWN THUS [Dotted Pattern]

ACCESS PROHIBITED [Hatched Pattern]

DR'N. BY <i>L.W.K.</i>	R/W MAP NO. <i>13/66</i>
C'LC BY <i>J.M.</i>	REF. MAP NO. <i>181-12</i>
C'K'D BY <i>H.L.</i>	REL-826
REVISED	

COUNTY ENGINEER'S COPY

FILED WITH LOS ANGELES COUNTY RECORDER
 MAR 24 1972

DIST	COUNTY	ROUTE	POST MILES	SHEET NO	TOTAL SHEETS
07	L.A.	210	302.323	3	5

B.W. Fell
 DISTRICT RIGHT OF WAY ENGINEER
 January 18, 1972
 DATE

S88°32'51"W FOOHILL BLVD.

POR. LOS

ROBLES de

SANTA

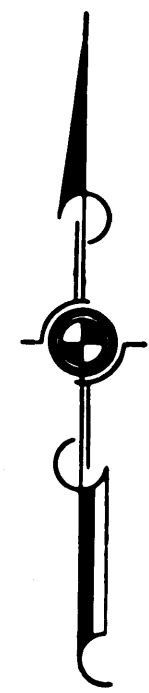
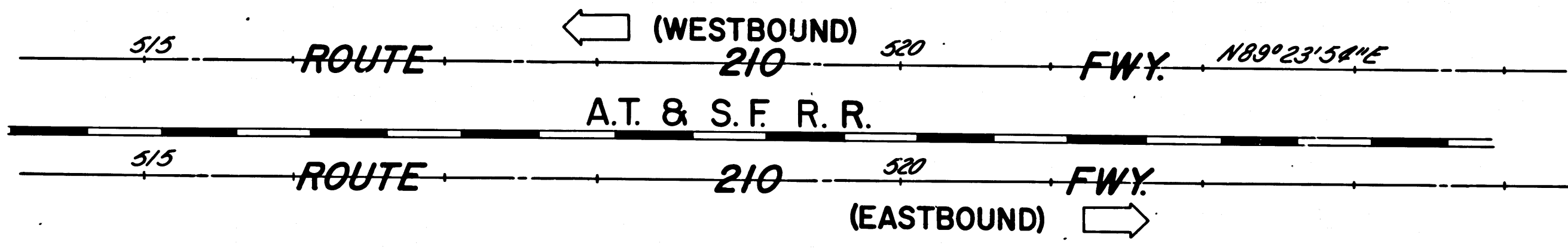
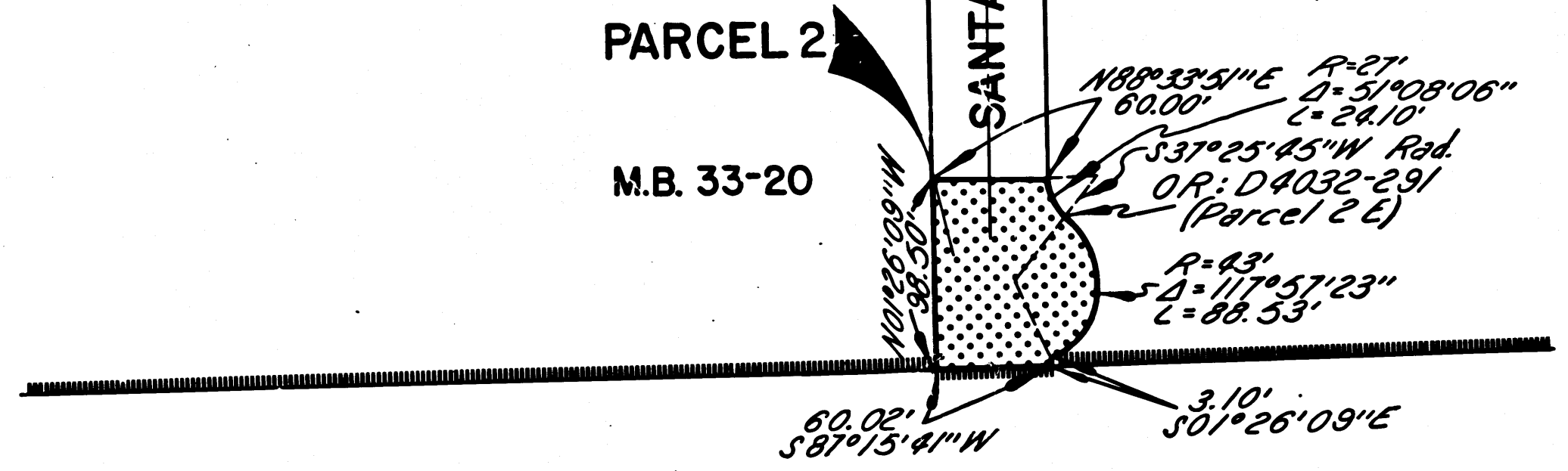
ANITA

CITY OF ARCADIA

PARCEL 2

M.B. 33-20

SANTA FE AVE.
 10°26'09"W



INTERSTATE
 STATE OF CALIFORNIA
 TRANSPORTATION AGENCY
 DEPARTMENT OF PUBLIC WORKS
 DIVISION OF HIGHWAYS

PROPOSED RELINQUISHMENT

0 50 100 150 200

AREA TO BE RELINQUISHED SHOWN THUS

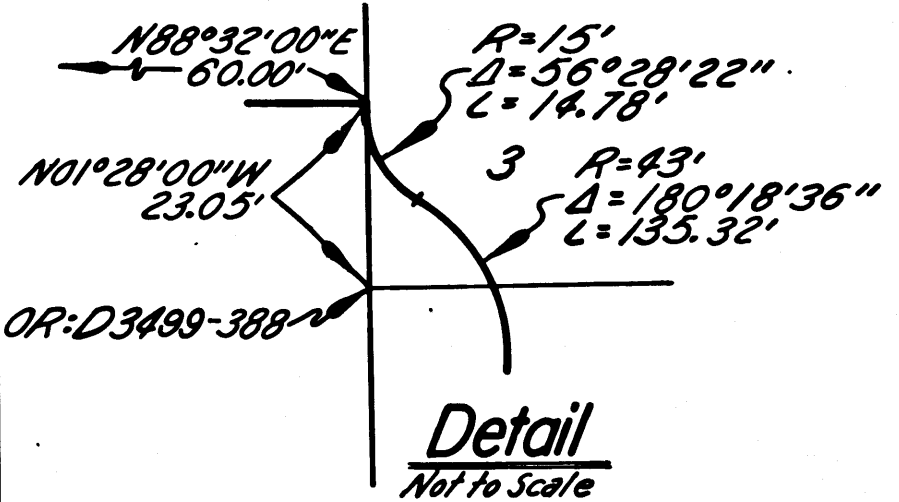
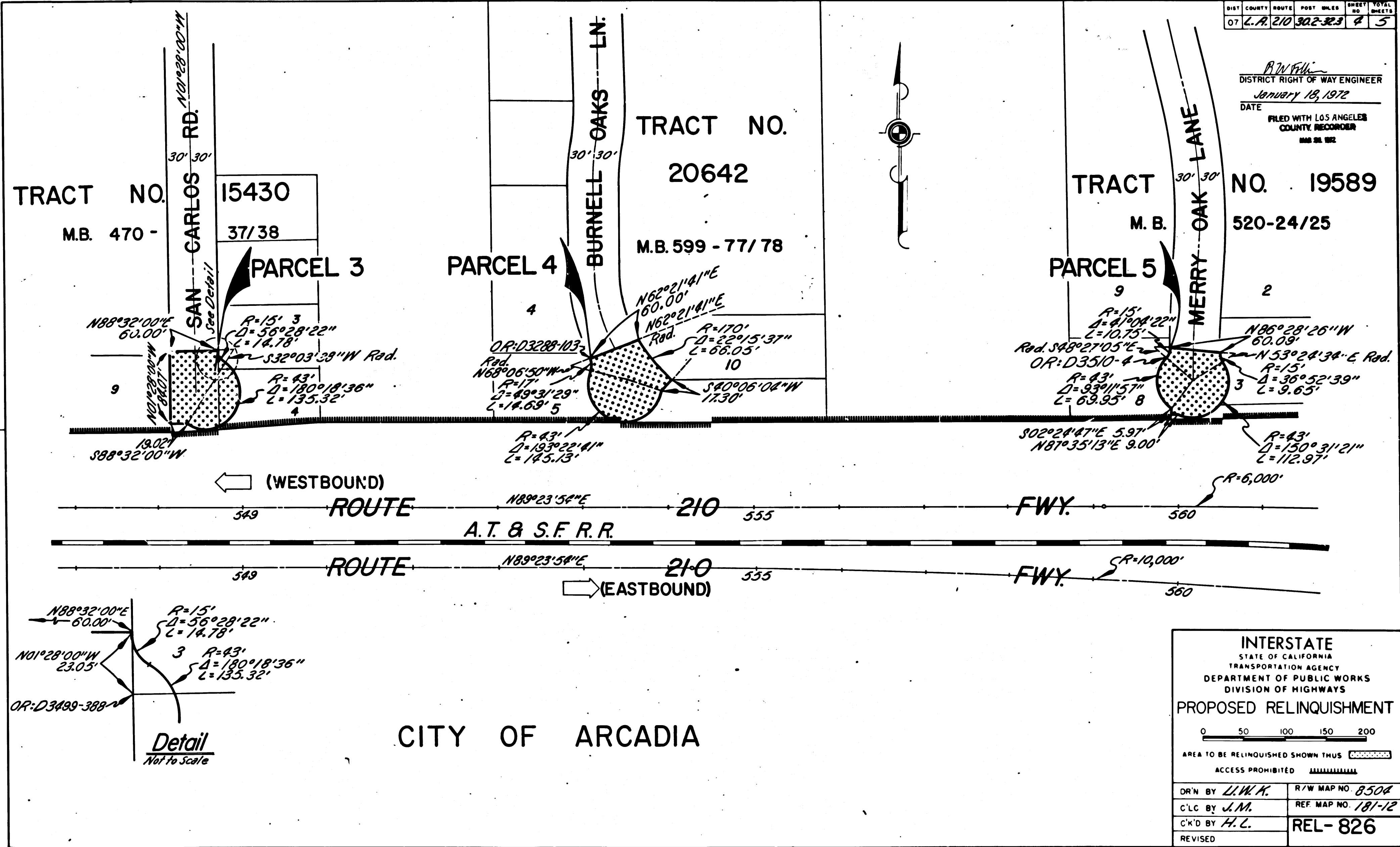
ACCESS PROHIBITED

DR'N BY <i>L.W.K.</i>	R/W MAP NO. 13260
C'LC BY <i>J.M.</i>	REF. MAP NO. 181-72
C'K'D BY <i>H.L.</i>	REL-826
REVISED	

COUNTY ENGINEER'S COPY

DIST	COUNTY	ROUTE	POST MILES	SHEET NO	TOTAL SHEETS
07	L.A.	210	302-323	4	5

R.W. Felt
 DISTRICT RIGHT OF WAY ENGINEER
 January 18, 1972
 DATE
 FILED WITH LOS ANGELES
 COUNTY RECORDER
 MAR 28 1972



CITY OF ARCADIA

INTERSTATE
 STATE OF CALIFORNIA
 TRANSPORTATION AGENCY
 DEPARTMENT OF PUBLIC WORKS
 DIVISION OF HIGHWAYS

PROPOSED RELINQUISHMENT

0 50 100 150 200

AREA TO BE RELINQUISHED SHOWN THUS [stippled box]
 ACCESS PROHIBITED [hatched box]

DR'N BY <i>L.W.K.</i>	R/W MAP NO. 8504
C'LC BY <i>J.M.</i>	REF. MAP NO. 181-12
C'K'D BY <i>H.L.</i>	REL-826
REVISED	

COUNTY ENGINEER'S COPY

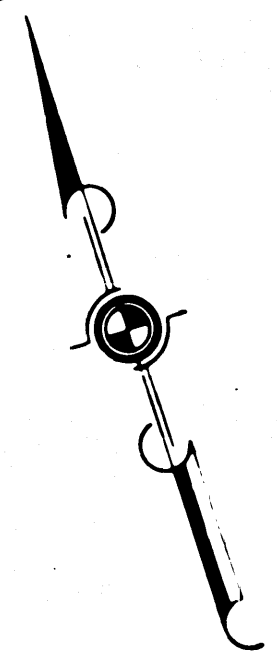
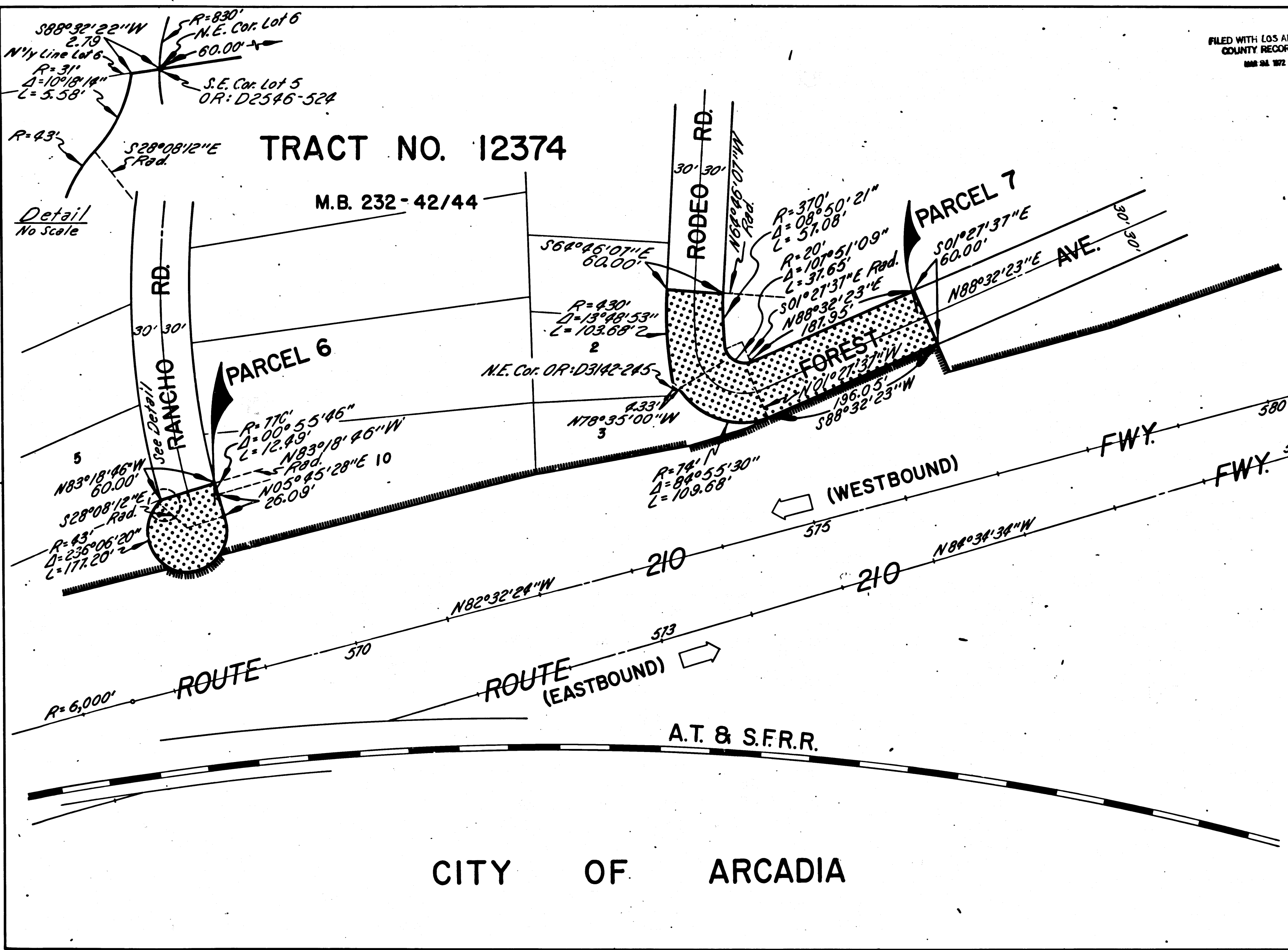
DIST	COUNTY	ROUTE	POST MILES	SHEET NO.	TOTAL SHEETS
07	L.A.	210	302-323	5	5

FILED WITH LOS ANGELES COUNTY RECORDER
MAR 24 1972

R.W. Fisher
DISTRICT RIGHT OF WAY ENGINEER
January 18, 1972
DATE

TRACT NO. 12374

M.B. 232 - 42/44



INTERSTATE
STATE OF CALIFORNIA
TRANSPORTATION AGENCY
DEPARTMENT OF PUBLIC WORKS
DIVISION OF HIGHWAYS

PROPOSED RELINQUISHMENT

0 50 100 150 200

AREA TO BE RELINQUISHED SHOWN THUS

ACCESS PROHIBITED

DR'N BY <i>L.W.K.</i>	R/W MAP NO. 8452
C'LG BY <i>J.M.</i>	REF. MAP NO. 181-12
C'K'D BY <i>H.L.</i>	REL-826
REVISED	

CITY OF ARCADIA

COUNTY ENGINEER'S COPY