

DIST	COUNTY	ROUTE	POST MILES	SHEET NO.	TOTAL SHEETS
07	L.A.	210	39.4	1	2

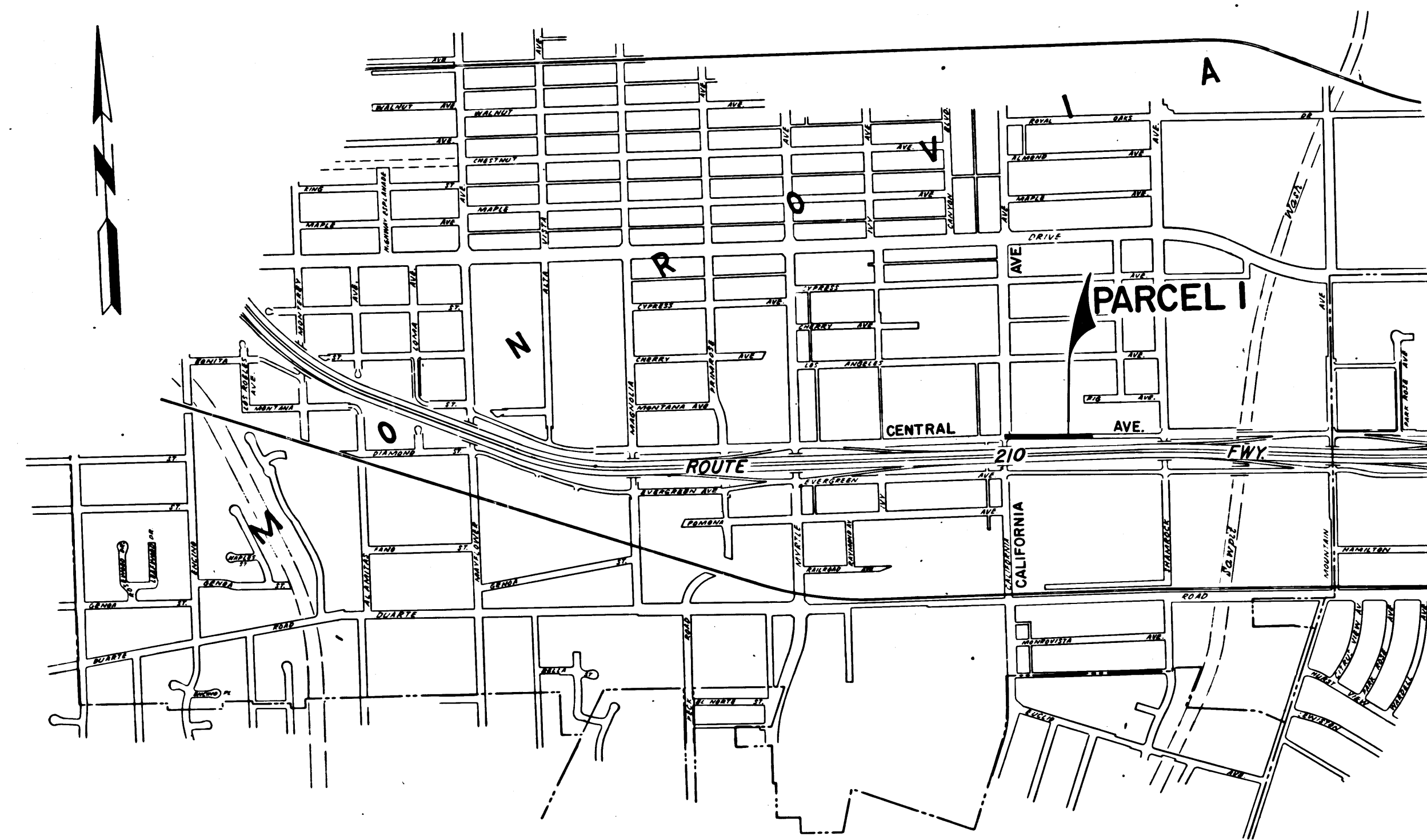
STATE OF CALIFORNIA  
 TRANSPORTATION AGENCY  
 DEPARTMENT OF PUBLIC WORKS  
 DIVISION OF HIGHWAYS  
 RIGHT OF WAY MAPS OF  
 STATE HIGHWAY

*R. Humelbach*  
 DEPUTY DISTRICT ENGINEER  
 REGISTERED CIVIL ENGINEER NO. 6416  
 February 7, 1972  
 DATE

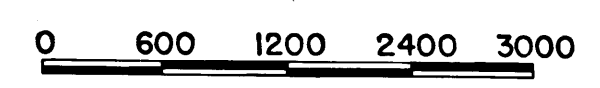
IN THE CITY OF MONROVIA ON CENTRAL AVE. AT CALIFORNIA AVE.

3773

FILED  
 AT REQUEST OF  
 DEPT. OF PUBLIC WORKS  
 MAR 30 1972  
 11 29 AM  
 IN BOOK 10  
 AT PAGE 14  
 OF STATE HIGHWAY MAPS  
 LOS ANGELES COUNTY, CALIF.  
 COUNTY RECORDED  
 BY *Duffy* *Free*



INTERSTATE  
 STATE OF CALIFORNIA  
 TRANSPORTATION AGENCY  
 DEPARTMENT OF PUBLIC WORKS  
 DIVISION OF HIGHWAYS  
 PROPOSED RELINQUISHMENT



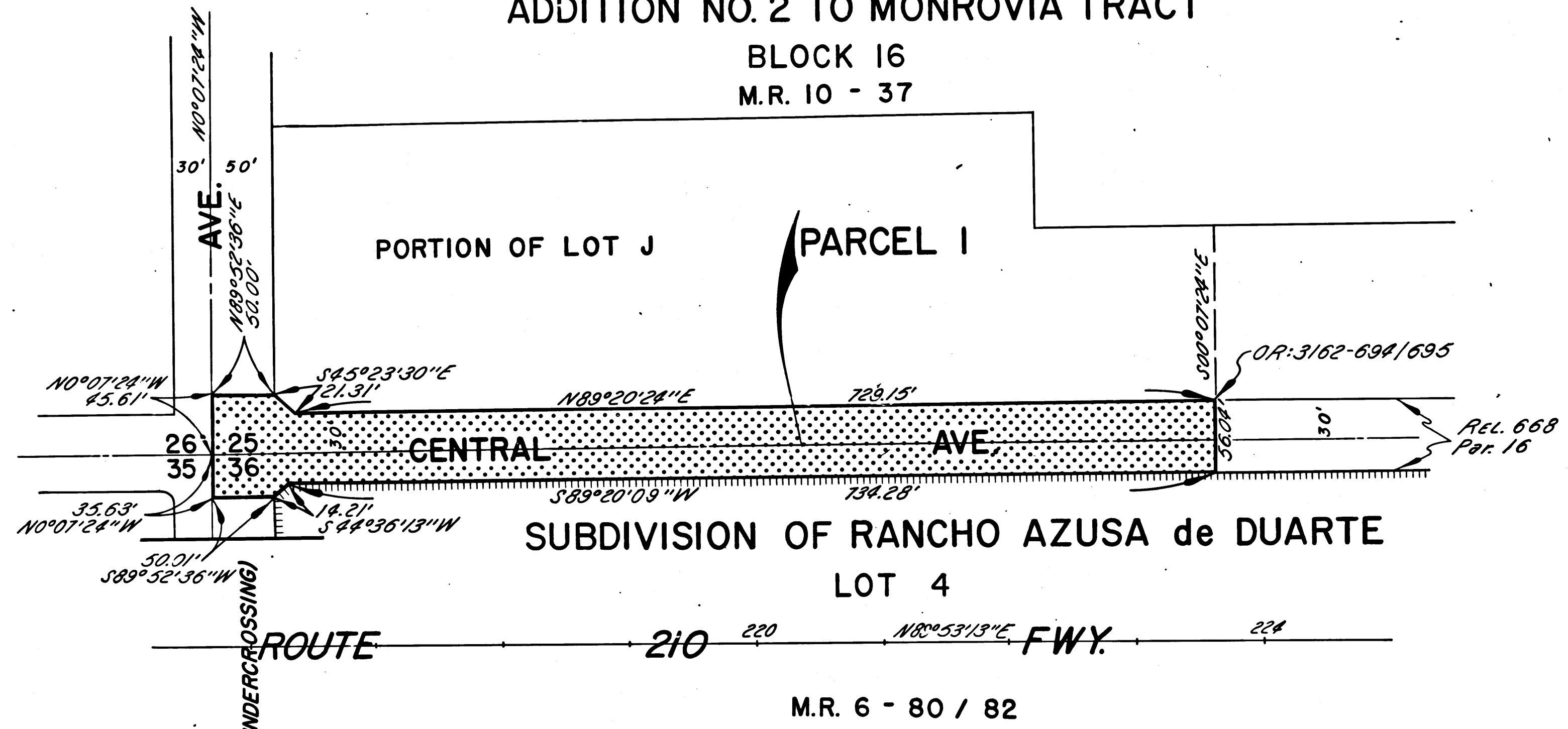
DR'N BY <i>L.W.K.</i>	R/W MAP NO. <i>F12251</i>
C'LC BY <i>J.M.</i>	REF. MAP NO.
C'K'D BY <i>H.L.</i>	<b>REL-672</b>
REVISED	

DIST	COUNTY	ROUTE	POST MILES	SHEET NO	TOTAL SHEETS
07	C.A.	210	344	2	2

FILED WITH LOS ANGELES COUNTY RECORDER  
MAR 30 1972

*A.W.F.M.*  
DISTRICT RIGHT OF WAY ENGINEER  
February 7, 1972  
DATE

T.I.N., R.I.W. S.B.M.  
ADDITION NO. 2 TO MONROVIA TRACT  
BLOCK 16  
M.R. 10 - 37



CALIFORNIA  
(UNDERCROSSING)

CITY OF MONROVIA



INTERSTATE  
STATE OF CALIFORNIA  
TRANSPORTATION AGENCY  
DEPARTMENT OF PUBLIC WORKS  
DIVISION OF HIGHWAYS

PROPOSED RELINQUISHMENT

0 50 100 150 200

AREA TO BE RELINQUISHED SHOWN THUS

ACCESS PROHIBITED

DR'N BY <i>L.W.K.</i>	R/W MAP NO. <i>F12251</i>
C'LC BY <i>J.M.</i>	REF. MAP NO.
C'K'D BY <i>H.L.</i>	REL-672
REVISED	