

DIST	COUNTY	ROUTE	POST MILES	SHEET NO.	TOTAL SHEETS
07	L.A.	60	25.4	1	2

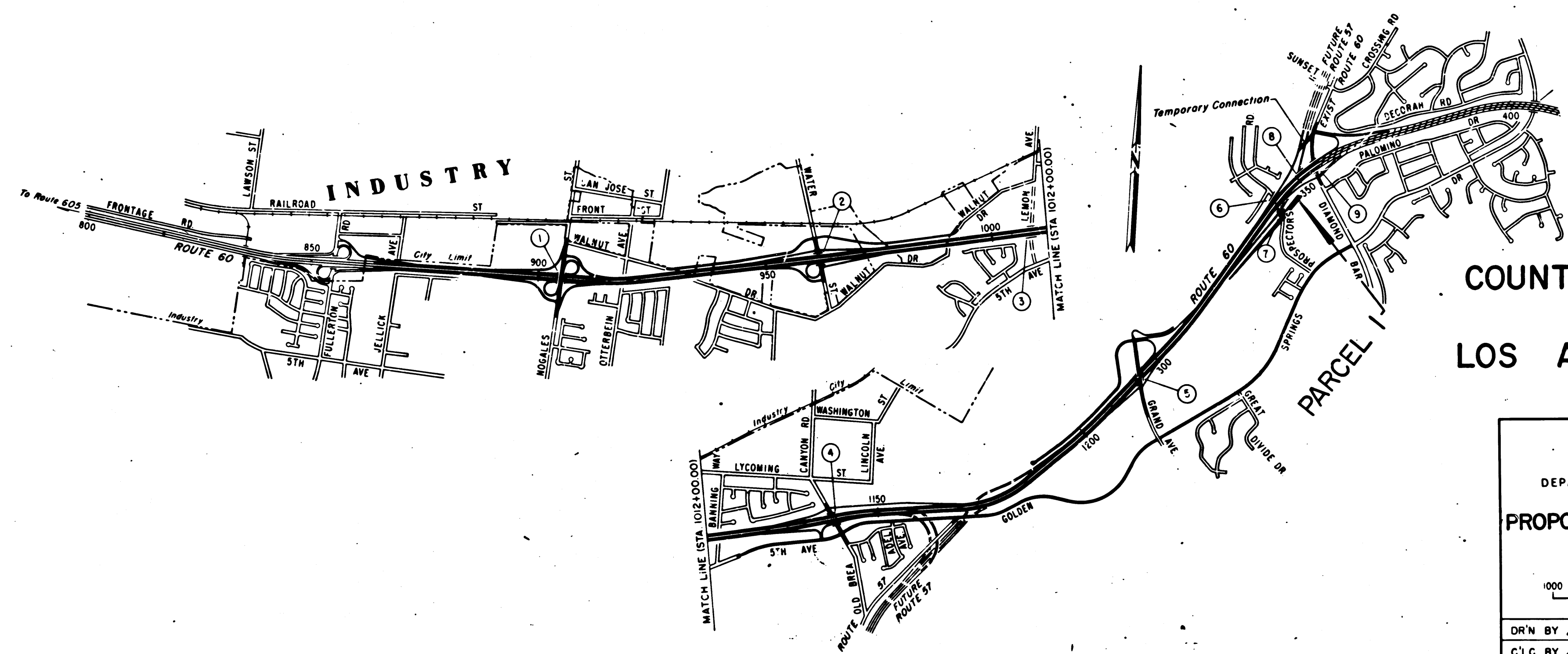
STATE OF CALIFORNIA  
 TRANSPORTATION AGENCY  
 DEPARTMENT OF PUBLIC WORKS  
 DIVISION OF HIGHWAYS

*A. L. Blumelhaek*  
 DEPUTY DISTRICT ENGINEER  
 REGISTERED CIVIL ENGINEER NO. 6416  
 February 9, 1972  
 DATE

RIGHT OF WAY MAPS OF  
**STATE HIGHWAY**  
 In the County of Los Angeles on Route 60 at Prospectors Rd.

4242

FILED  
 AT REQUEST OF  
 DEPT. OF PUBLIC WORKS  
 APR 14, 1972  
 29 PAST 12 PM  
 IN BOOK 10  
 AT PAGE 16  
 OF STATE HIGHWAY MAPS  
 LOS ANGELES COUNTY, CALIF.  
 COUNTY RECORDER  
 BY *Free*



COUNTY OF  
 LOS ANGELES

STATE OF CALIFORNIA  
 TRANSPORTATION AGENCY  
 DEPARTMENT OF PUBLIC WORKS  
 DIVISION OF HIGHWAYS  
**PROPOSED ABANDONMENT**

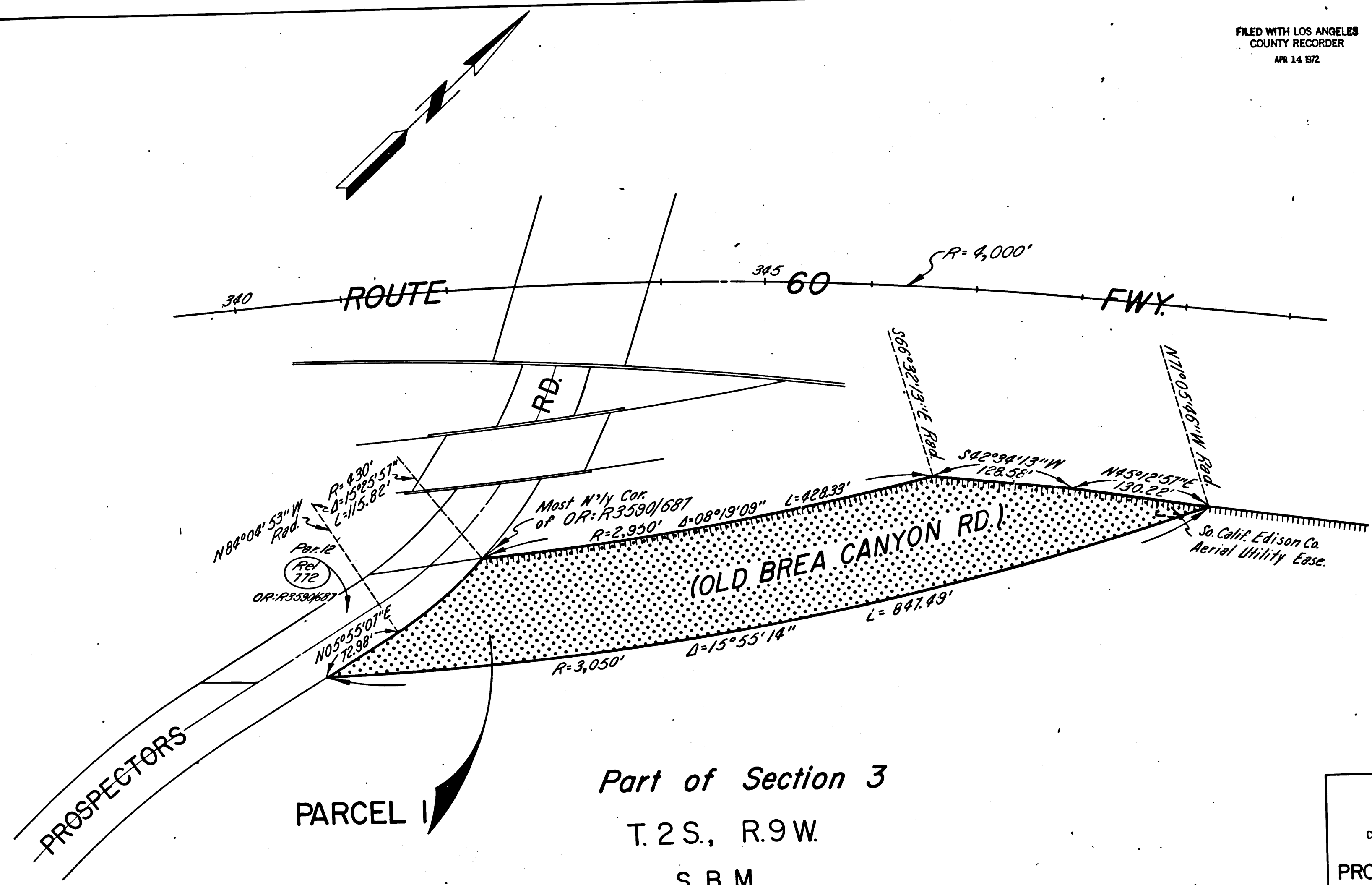
SCALE IN FEET  
 1000 0 1000 2000 3000

DR'N BY <i>L.W.K.</i>	R/W MAP NO <i>F1676-2</i>
C'LC BY <i>D.D.</i>	REF. MAP NO. <i>168-7</i>
C'K'D BY <i>H.L.</i>	<b>ABD-87</b>
REVISED <i>1-26-72</i>	

DIST	COUNTY	ROUTE	POST MILES	SHEET NO	TOTAL SHEETS
07	L.A.	60	25.4	2	2

FILED WITH LOS ANGELES  
COUNTY RECORDER  
APR 14 1972

*R.W. Folkin*  
DISTRICT RIGHT OF WAY ENGINEER  
February 9, 1972  
DATE



Part of Section 3  
T.2S., R.9W.  
S. B. M.  
COUNTY OF LOS ANGELES

STATE OF CALIFORNIA  
TRANSPORTATION AGENCY  
DEPARTMENT OF PUBLIC WORKS  
DIVISION OF HIGHWAYS

**PROPOSED ABANDONMENT**

0 50 100 150 200

AREA TO BE ABANDONED SHOWN THUS

ACCESS PROHIBITED

DR'N BY <i>L.W.K.</i>	R/W MAP NO <i>F.1676-2</i>
C/LC BY <i>D.D.</i>	REF MAP NO <i>168-7</i>
CK'D BY <i>H.L.</i>	<b>ABD-87</b>
REVISED <i>1-26-72</i>	