

DIST	COUNTY	ROUTE	POST MILES	SHEET NO	TOTAL SHEETS
07	L.A.	210	37.9	1	2

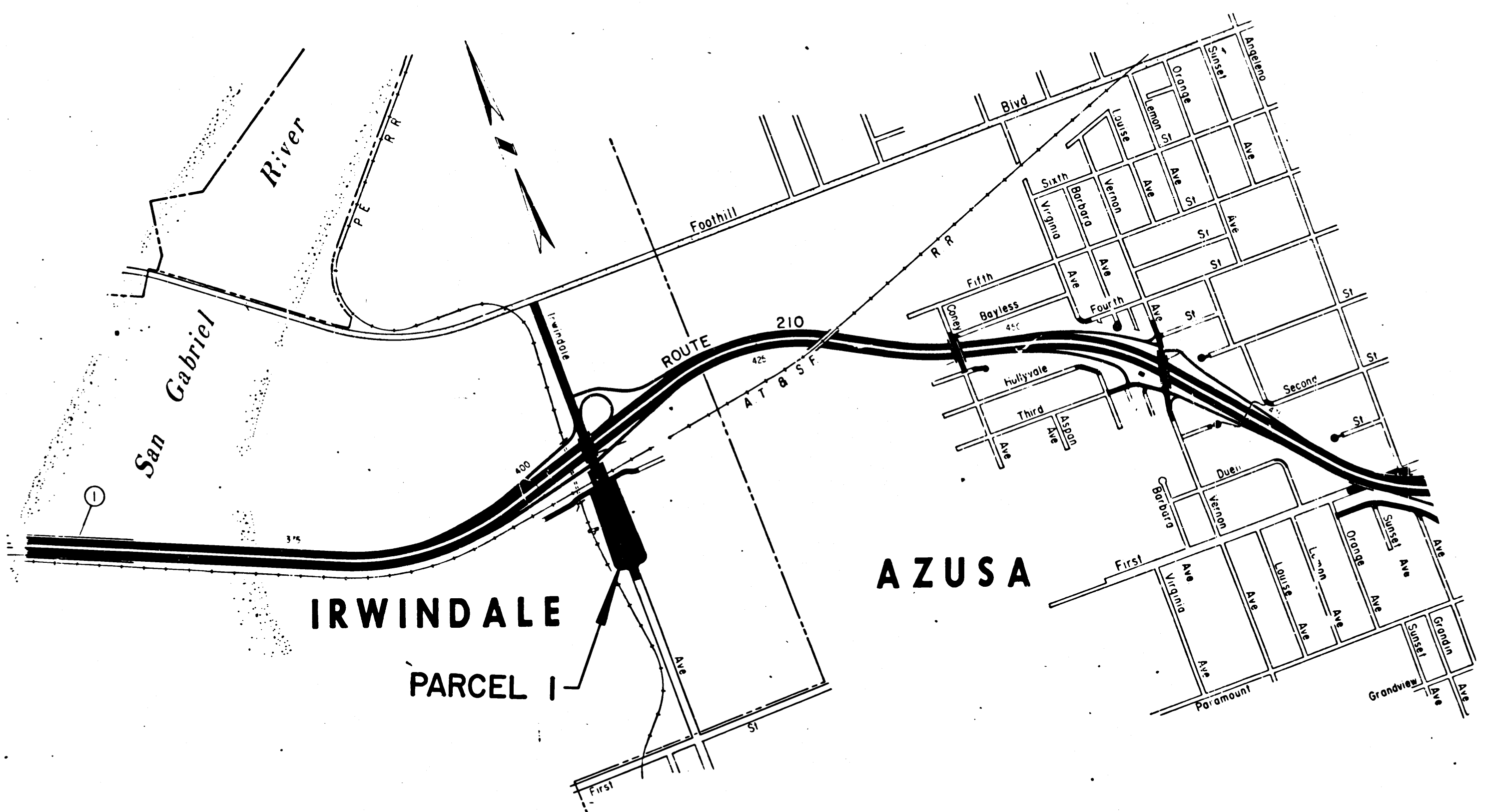
STATE OF CALIFORNIA
 TRANSPORTATION AGENCY
 DEPARTMENT OF PUBLIC WORKS
 DIVISION OF HIGHWAYS

A.J. Hummel
 DEPUTY DISTRICT ENGINEER
 REGISTERED CIVIL ENGINEER NO. 6416
 January 4, 1972
 DATE

RIGHT OF WAY MAPS OF
STATE HIGHWAY
 In the City of Irwindale on Route 210 at Irwindale Ave.

4264

FILED
 AT REQUEST OF
 DEPT. OF PUBLIC WORKS
 APR. 21, 1972
 2:11 PM.
 PAST 2 PM
 IN BOOK 10
 AT PAGE 18
 OF STATE HIGHWAY MAPS
 LOS ANGELES COUNTY, CALIF.
 COUNTY RECORDER
 BY *Free*
 Deputy



STATE OF CALIFORNIA
 TRANSPORTATION AGENCY
 DEPARTMENT OF PUBLIC WORKS
 DIVISION OF HIGHWAYS
PROPOSED RELINQUISHMENT
 SCALE IN FEET
 600 1200 800

DR'N BY <i>L.W.K.</i>	R/W MAP NO. <i>F1228-10</i>
C'LG BY <i>D.D.</i>	REF. MAP NO. <i>176-17</i>
C'K'D BY <i>H.L.</i>	REL-742
REVISED	

10/18-19

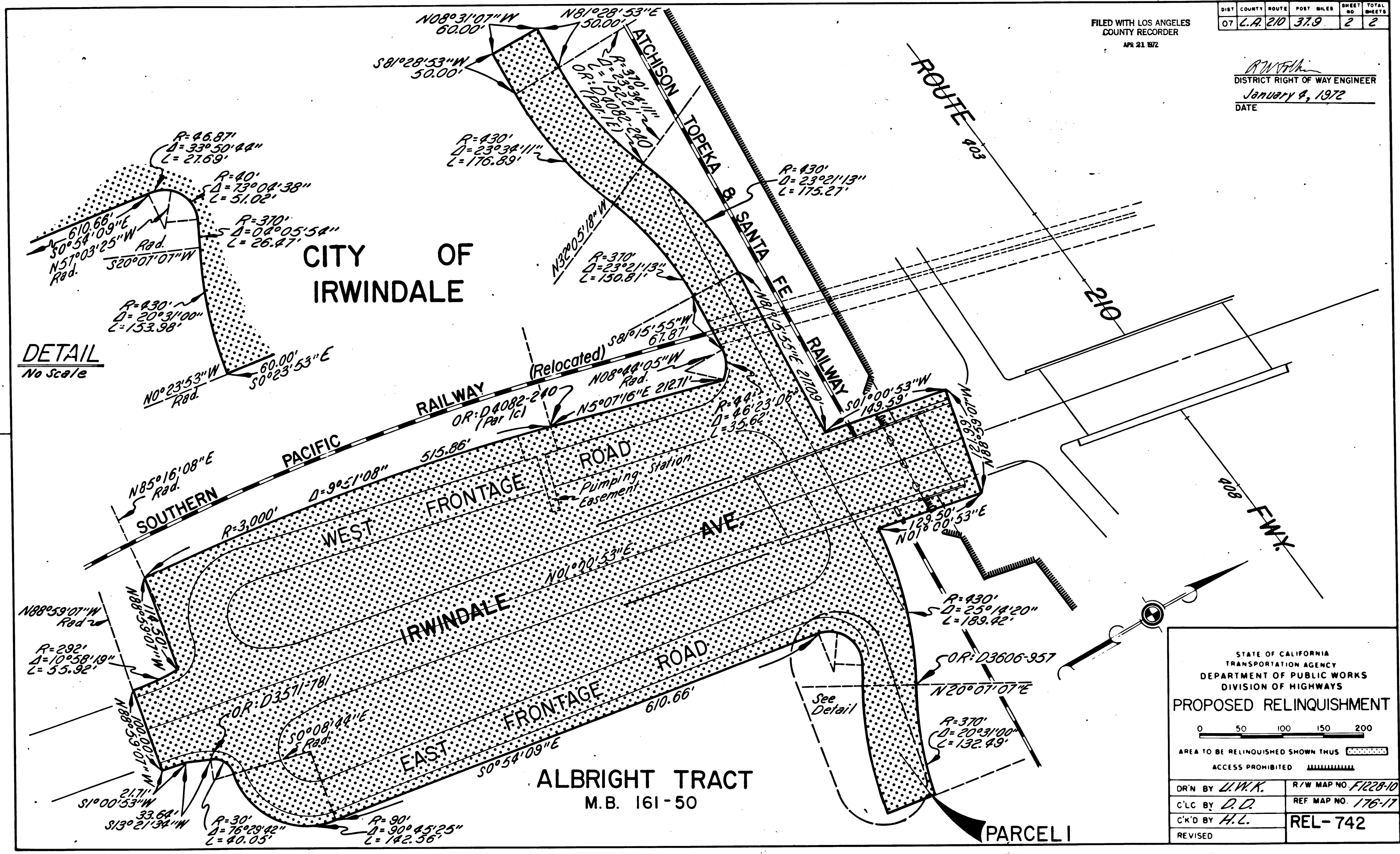
COUNTY ENGINEER'S COPY

221

DIST	COUNTY	ROUTE	POST MILES	SHEET NO	TOTAL SHEETS
07	L.A.	210	37.9	2	2

FILED WITH LOS ANGELES COUNTY RECORDER
APR 21 1972

R.W. Fink
DISTRICT RIGHT OF WAY ENGINEER
January 8, 1972
DATE



COUNTY ENGINEER'S COPY