

DIST	COUNTY	ROUTE	POST MILES	SHEET NO.	TOTAL SHEETS
07	LA	210	443/47.5	1	7

STATE OF CALIFORNIA
 TRANSPORTATION AGENCY
 DEPARTMENT OF PUBLIC WORKS
 DIVISION OF HIGHWAYS

A. L. Hielhook
 DEPUTY DISTRICT ENGINEER
 REGISTERED CIVIL ENGINEER NO. 6416

MAY 18, 1972
 DATE

RIGHT OF WAY MAPS OF
 STATE HIGHWAY

In the City of San Dimas along Route 210 Fwy.
 Between 0.2 mi. South of Via Verde and Gladstone St.

3615

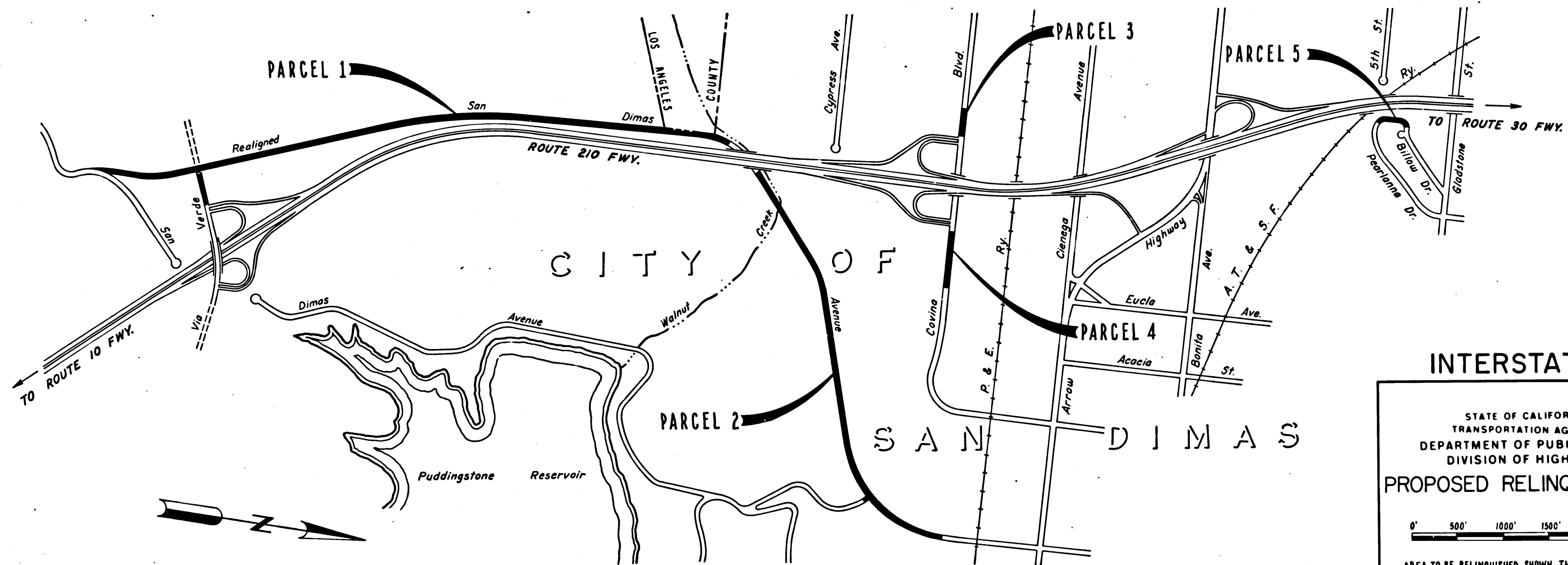
FILED
 AT REQUEST OF
 DEPT. OF PUBLIC WORKS
 AUG 14 1972
 11 11 AM
 2 PM

IN BOOK 10
 AT PAGE 31

OF STATE HIGHWAY MAPS
 LOS ANGELES COUNTY, CALIF.

COUNTY RECORDER

BY *FRC* Deputy



INTERSTATE

STATE OF CALIFORNIA
 TRANSPORTATION AGENCY
 DEPARTMENT OF PUBLIC WORKS
 DIVISION OF HIGHWAYS

PROPOSED RELINQUISHMENT

0' 500' 1000' 1500' 2000' 2500'

AREA TO BE RELINQUISHED SHOWN THUS

DR'N BY R. KOSINSKI	R/W MAP NO. F-1242 F-1243
C'LC BY D. DAVIES	CONTRACT NO. 07-012424
C'K'D BY H. LEE	REL-829
REVISED	

10/31-57

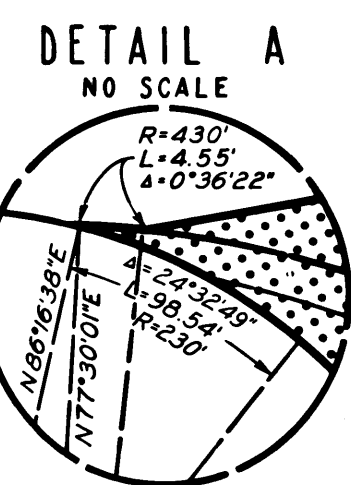
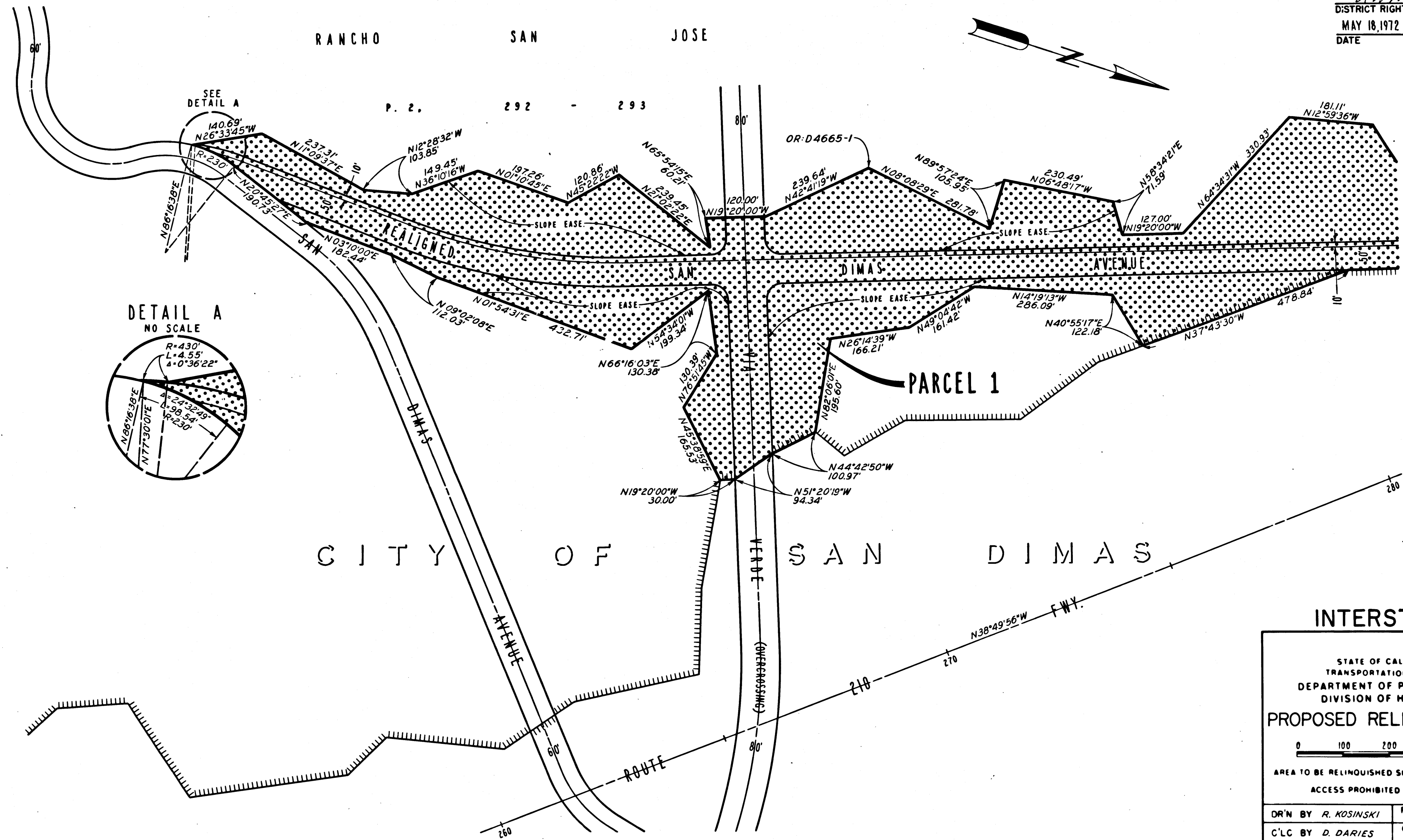
FILED WITH LOS ANGELES COUNTY RECORDER
AUG 14 1972

DIST	COUNTY	ROUTE	POST MILES	SHEET NO	TOTAL SHEETS
07	LA	210	44.3/47.5	2	7

R.W. Felt
DISTRICT RIGHT OF WAY ENGINEER
MAY 18, 1972
DATE

RANCHO SAN JOSE

P. 2. 292 - 293



CITY OF SAN DIMAS

INTERSTATE

STATE OF CALIFORNIA
TRANSPORTATION AGENCY
DEPARTMENT OF PUBLIC WORKS
DIVISION OF HIGHWAYS

PROPOSED RELINQUISHMENT

0 100 200 300 400

AREA TO BE RELINQUISHED SHOWN THUS

ACCESS PROHIBITED

DR'N BY R. KOSINSKI	R/W MAP NO. F-1243
C'LC BY D. DAVIES	CONTRACT NO. 07-012424
C'K'D BY H. LEE	REL-829
REVISED	

FILED WITH LOS ANGELES COUNTY RECORDER
AUG 14 1972

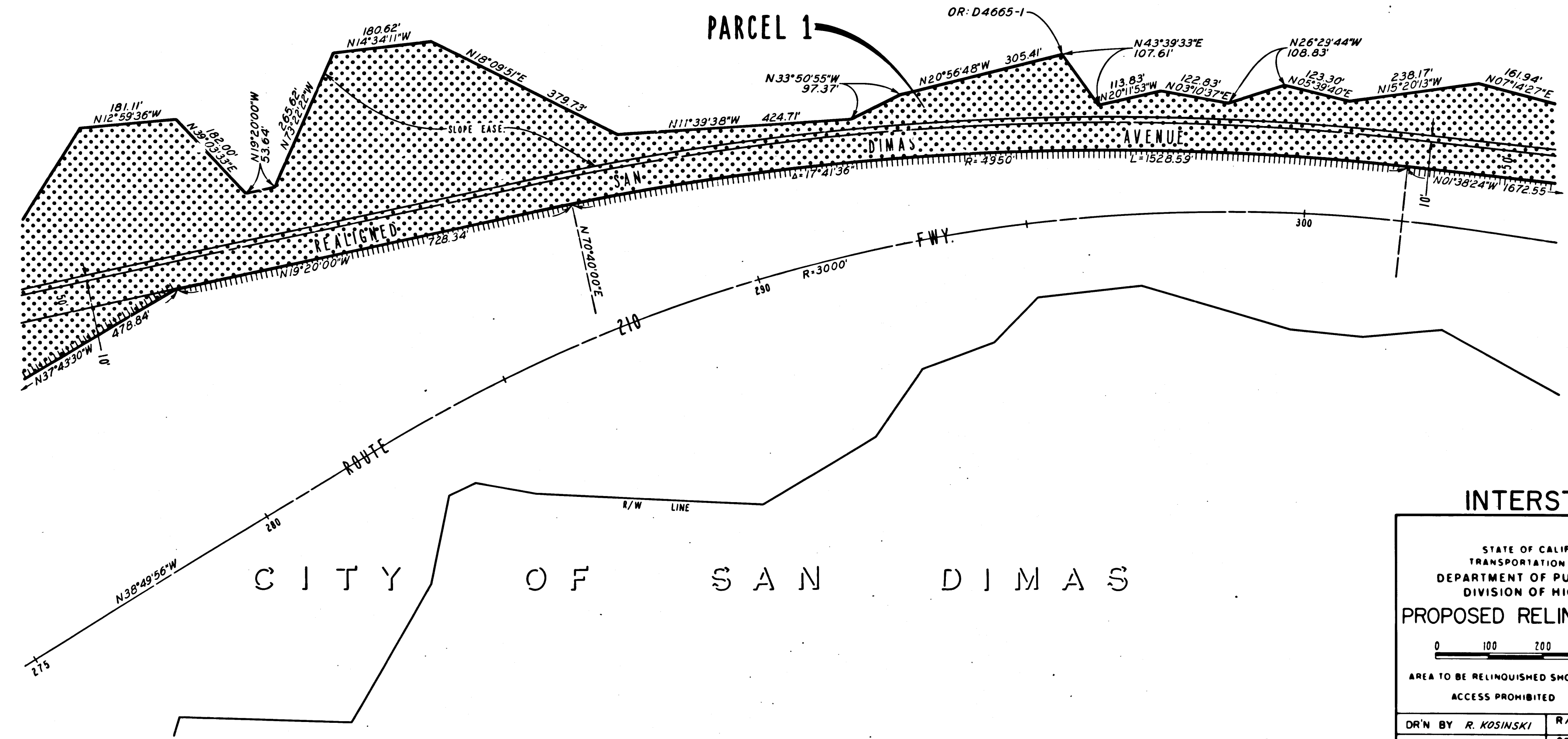
DIST	COUNTY	ROUTE	POST MILES	SHEET NO	TOTAL SHEETS
07	LA	210	44.3/47.5	3	7

R.W. F. A.
DISTRICT RIGHT OF WAY ENGINEER
MAY 18, 1972
DATE

RANCHO SAN JOSE

P. 2, 292 - 293

PARCEL 1



INTERSTATE

STATE OF CALIFORNIA
TRANSPORTATION AGENCY
DEPARTMENT OF PUBLIC WORKS
DIVISION OF HIGHWAYS

PROPOSED RELINQUISHMENT

0 100 200 300 400

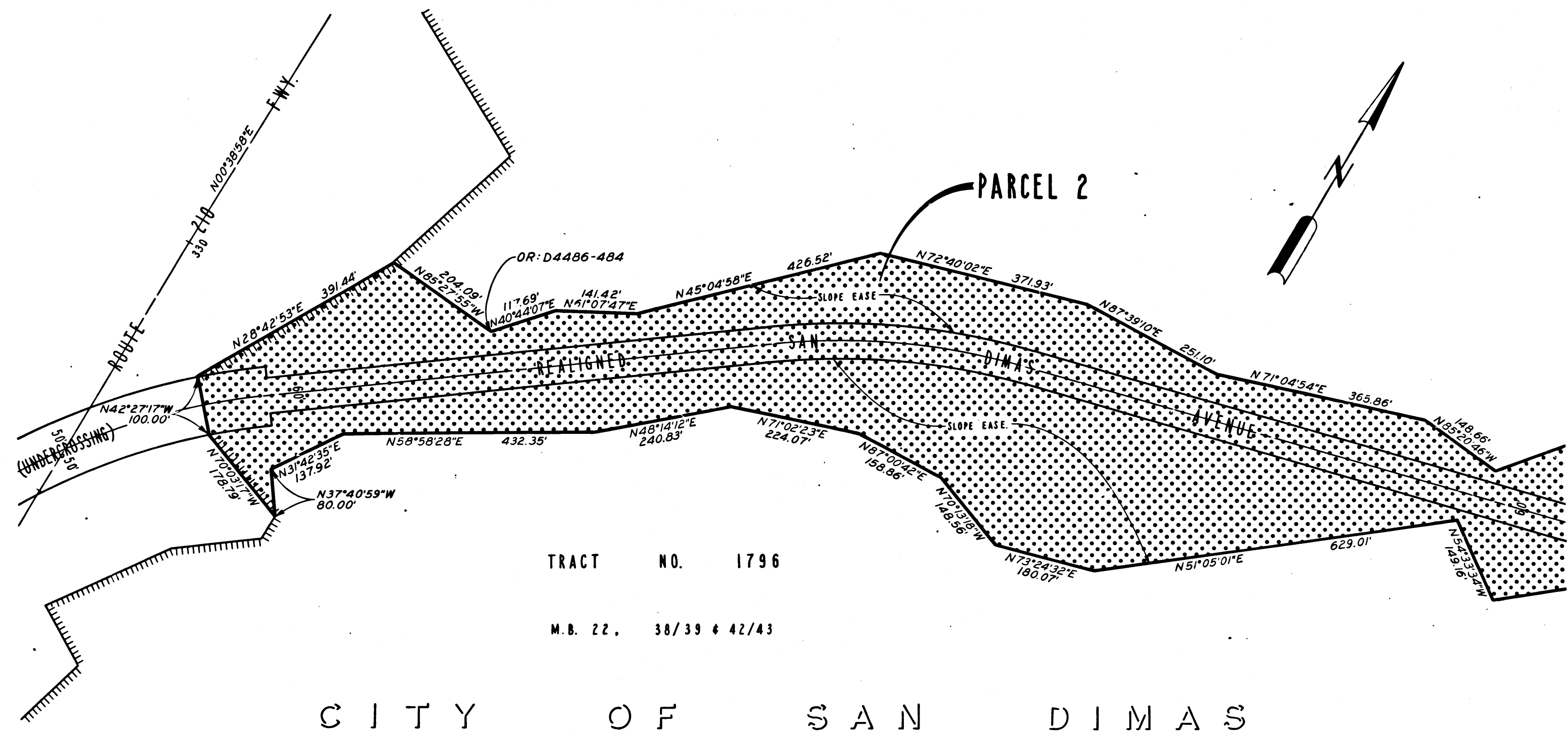
AREA TO BE RELINQUISHED SHOWN THUS ACCESS PROHIBITED

DR'N BY R. KOSINSKI	R/W MAP NO. F-1243
C'LC BY D. DARIES	CONTRACT NO. 07-012424
C'K'D BY H. LEE	REL-829
REVISED	

FILED WITH LOS ANGELES
COUNTY RECORDER
AUG 14 1972

DIST	COUNTY	ROUTE	POST MILES	SHEET NO.	TOTAL SHEETS
07	LA	210	44.3/47.5	5	7

B.W. Felton
DISTRICT RIGHT OF WAY ENGINEER
MAY 18, 1972
DATE



TRACT NO. 1796

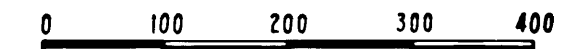
M.B. 22, 38/39 & 42/43

CITY OF SAN DIMAS

INTERSTATE

STATE OF CALIFORNIA
TRANSPORTATION AGENCY
DEPARTMENT OF PUBLIC WORKS
DIVISION OF HIGHWAYS

PROPOSED RELINQUISHMENT



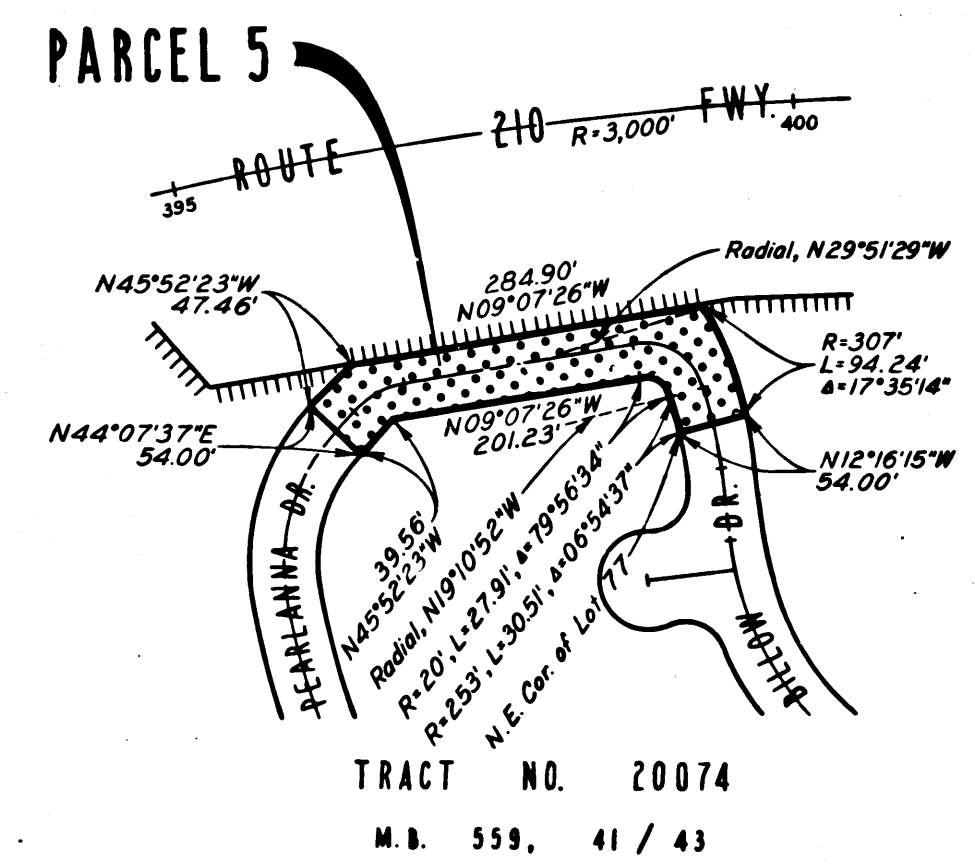
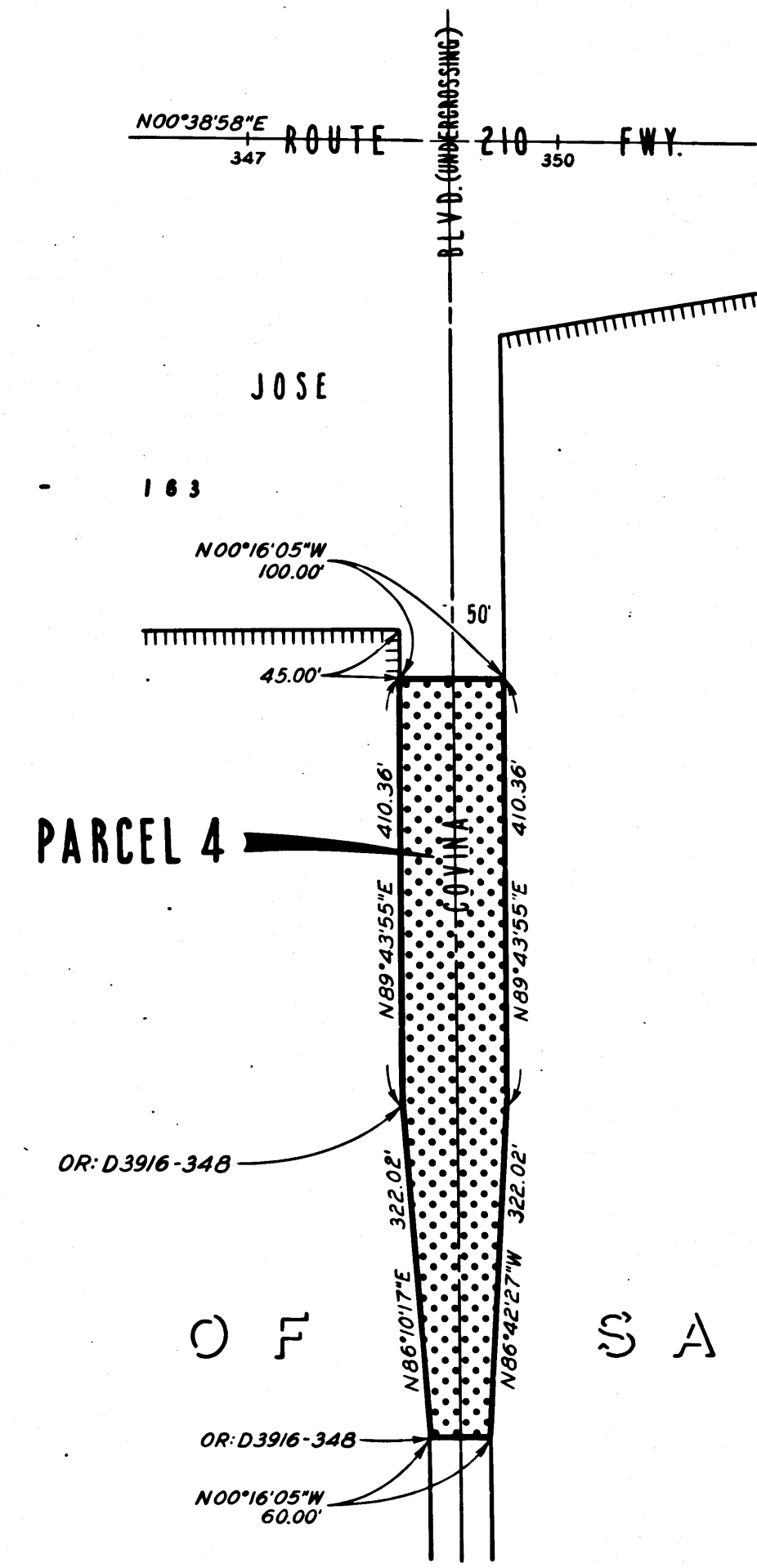
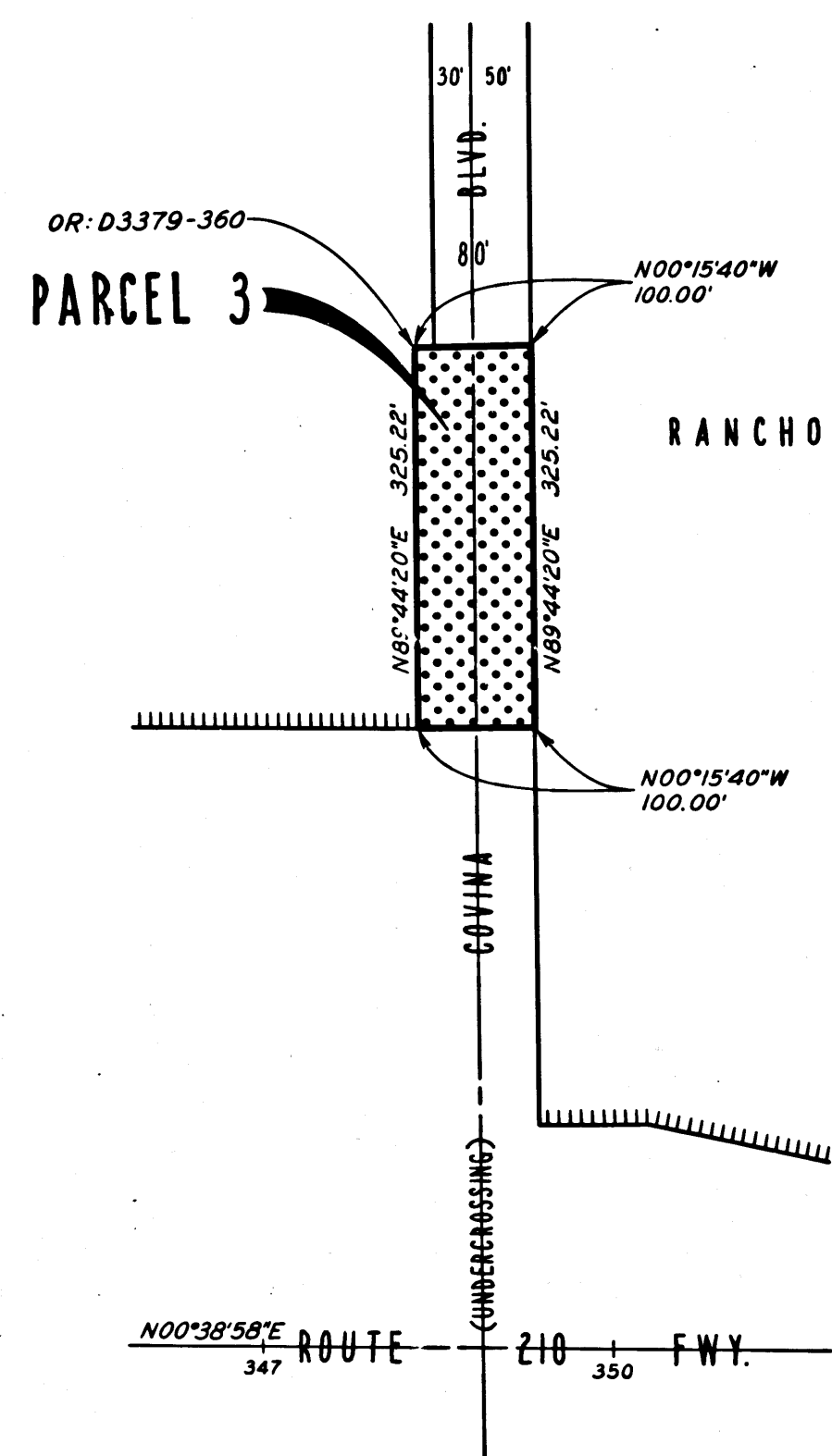
AREA TO BE RELINQUISHED SHOWN THUS ACCESS PROHIBITED

DR'N BY R. KOSINSKI	R/W MAP NO. F-1243
C'LC BY D. DARIES	CONTRACT NO. 07-012424
C'K'D BY H. LEE	REL-829
REVISED	

FILED WITH LOS ANGELES COUNTY RECORDER
AUG 14 1972

DIST	COUNTY	ROUTE	POST MILES	SHEET NO	TOTAL SHEETS
07	LA	210	44.3/47.5	7	7

R.W. Fallon
DISTRICT RIGHT OF WAY ENGINEER
MAY 18, 1972
DATE



CITY OF SAN DIMAS

INTERSTATE

STATE OF CALIFORNIA
TRANSPORTATION AGENCY
DEPARTMENT OF PUBLIC WORKS
DIVISION OF HIGHWAYS

PROPOSED RELINQUISHMENT

0 100 200 300 400

AREA TO BE RELINQUISHED SHOWN THUS ACCESS PROHIBITED

DR'N BY R. KOSINSKI	R/W MAP NO. F-1242
C'LC BY D. DARIES	CONTRACT NO. 07-012424
C'K'D BY H. LEE	REL-829
REVISED	