

DIST	COUNTY	ROUTE	POST MILES	SHEET NO.	TOTAL SHEETS
07	L.A.	57	4.3-6.1	1	7

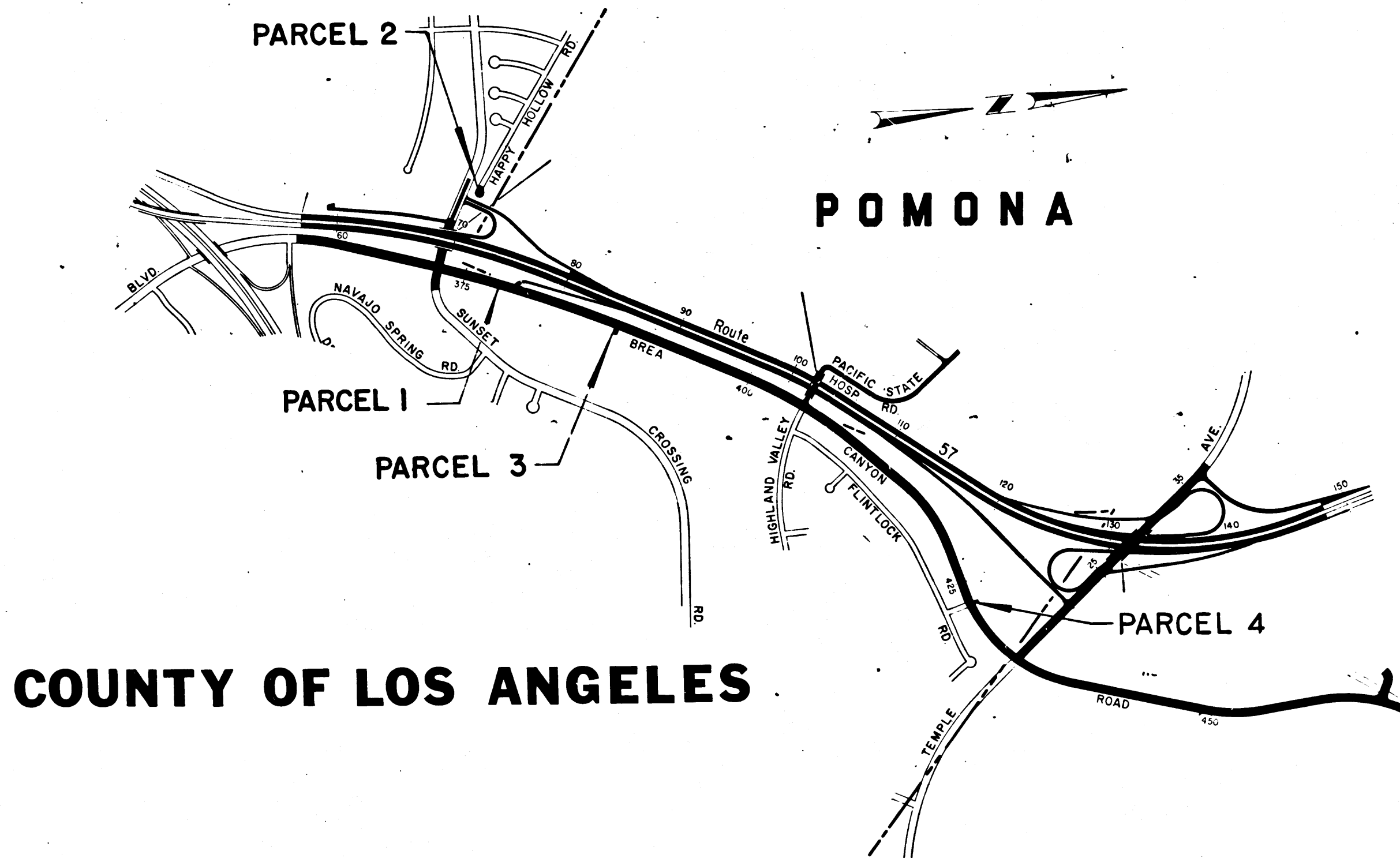
STATE OF CALIFORNIA  
 TRANSPORTATION AGENCY  
 DEPARTMENT OF PUBLIC WORKS  
 DIVISION OF HIGHWAYS

*A. J. Hamilton*  
 DEPUTY DISTRICT ENGINEER  
 REGISTERED CIVIL ENGINEER NO. 6416

June 6, 1972  
 DATE

RIGHT OF WAY MAPS OF  
 STATE HIGHWAY

In the County of Los Angeles between 0.2 mile  
 south of Sunset Crossing Road and Temple Avenue.



COUNTY OF LOS ANGELES

3505  
 FILED  
 AT REQUEST OF  
 DEPT. OF PUBLIC WORKS  
 AUG 24 1972  
 47 MIN.  
 1 PM  
 IN BOOK 10  
 AT PAGE 38  
 OF STATE HIGHWAY MAPS  
 LOS ANGELES COUNTY, CALIF.  
 COUNTY RECORDER  
*Free*

STATE OF CALIFORNIA  
 TRANSPORTATION AGENCY  
 DEPARTMENT OF PUBLIC WORKS  
 DIVISION OF HIGHWAYS  
 PROPOSED RELINQUISHMENT

SCALE IN FEET  
 0 600 1200 1800

DR'N BY U.W.K.	R/W MAP NO. F-1681
C'LC BY G.J.H.	CONTRACT NO. 07-044304
C'K'D BY	REL-792
REVISED	

COUNTY ENGINEER'S COPY

147

10/35-44

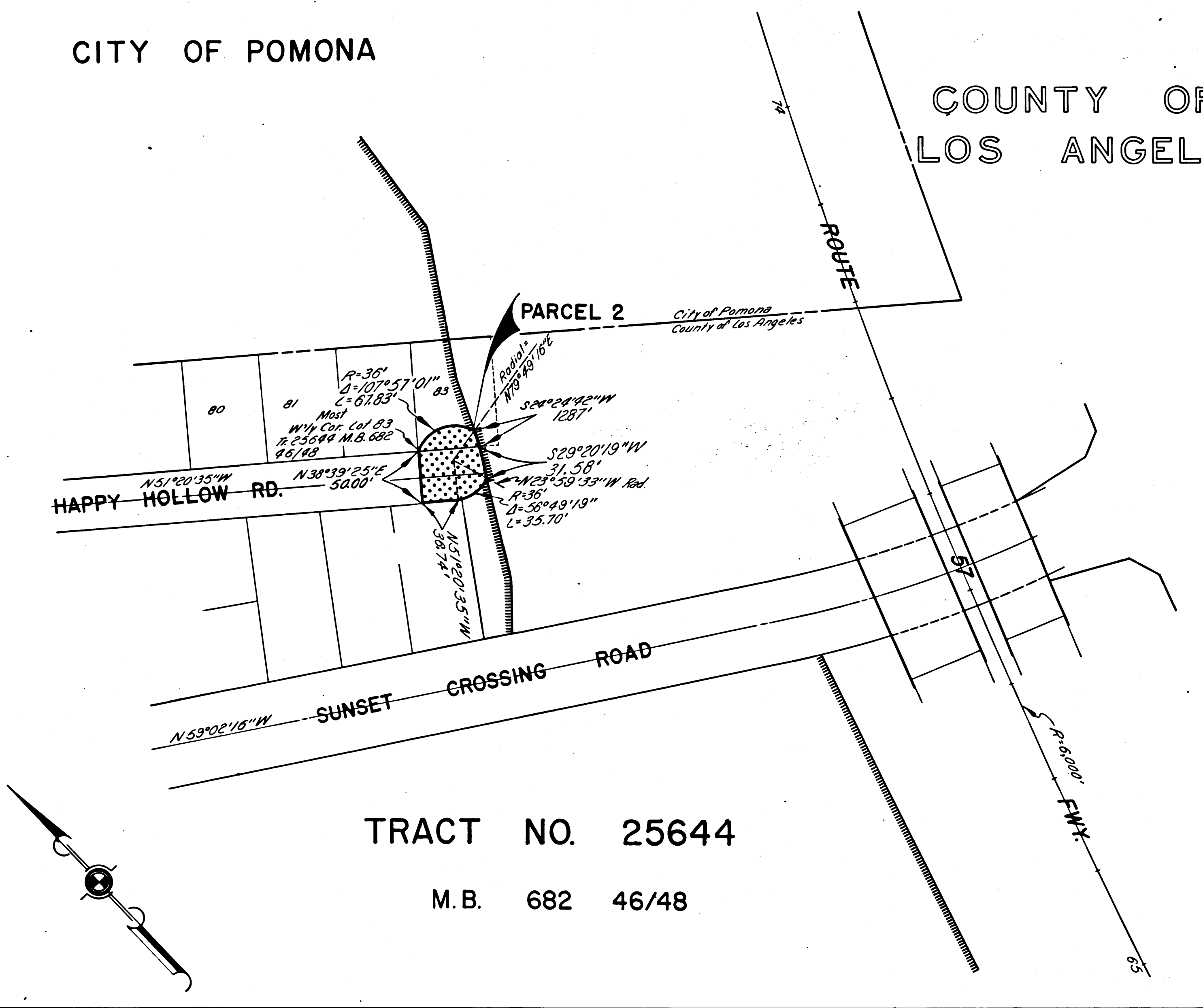
DIST	COUNTY	ROUTE	POST MILES	SHEET NO.	TOTAL SHEETS
07	L.A.	57	23-61	2	7

FILED WITH LOS ANGELES  
COUNTY RECORDER  
AUG 24 1972

*Carl B. Worsley*  
DISTRICT RIGHT OF WAY ENGINEER  
June 6, 1972  
DATE

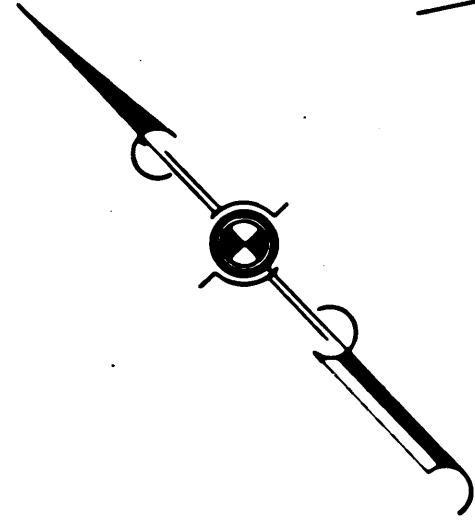
CITY OF POMONA

COUNTY OF  
LOS ANGELES



TRACT NO. 25644

M.B. 682 46/48



STATE OF CALIFORNIA  
TRANSPORTATION AGENCY  
DEPARTMENT OF PUBLIC WORKS  
DIVISION OF HIGHWAYS

**PROPOSED RELINQUISHMENT**

0 50 100 150 200

AREA TO BE RELINQUISHED SHOWN THUS

ACCESS PROHIBITED

DR'N BY <i>L.W.K.</i>	R/W MAP NO. <i>F-1581</i>
C'LC BY <i>G.J.H.</i>	CONTRACT NO. <i>07-044304</i>
C'D BY	<b>REL-792</b>
REVISED <i>6-1-72</i>	

COUNTY ENGINEER'S COPY



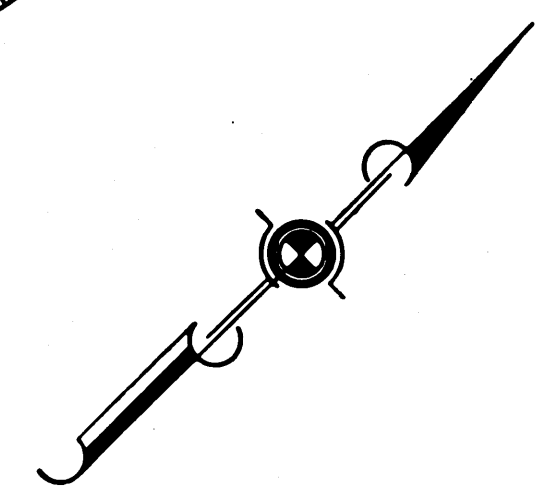
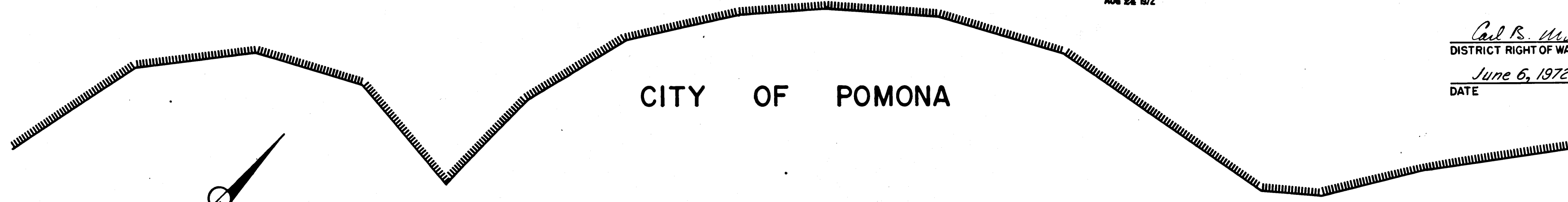


FILED WITH LOS ANGELES  
COUNTY RECORDER  
AUG 24 1972

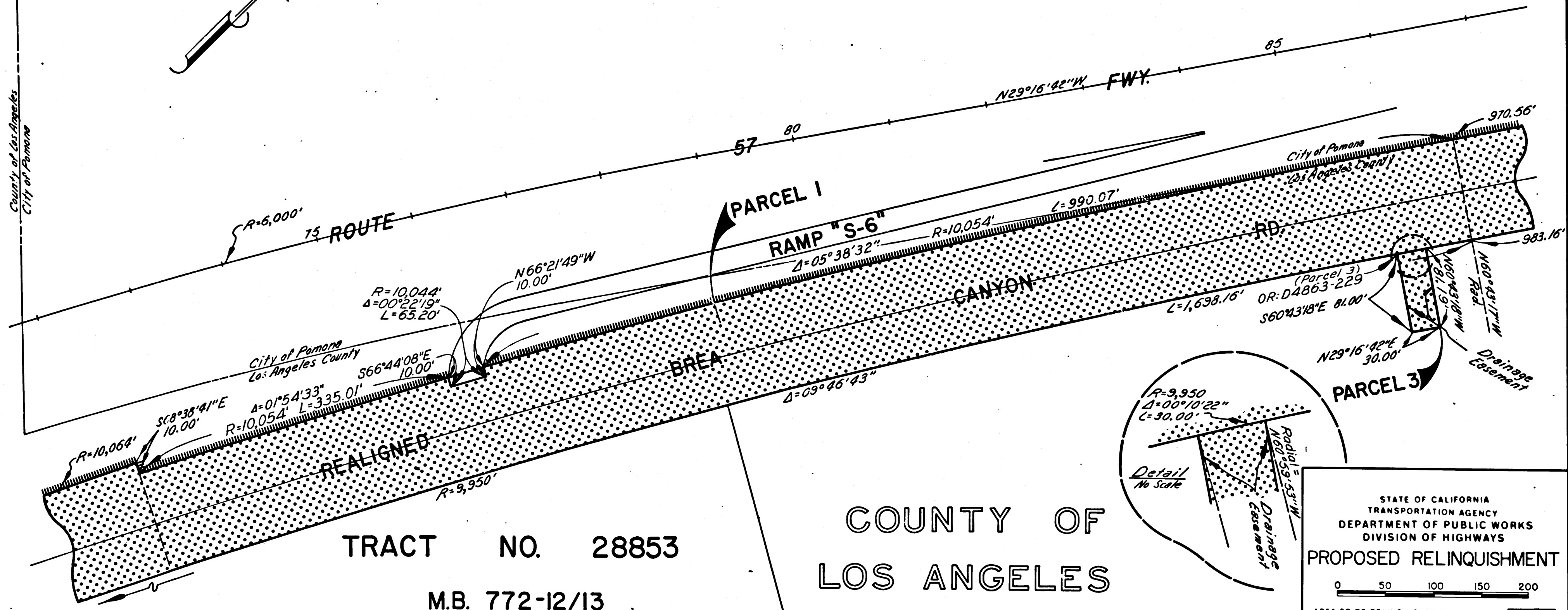
DIST	COUNTY	ROUTE	POST MILES	SHEET NO.	TOTAL SHEETS
07	L.A.	57	43-61	4	7

*Carl R. Wurdley*  
DISTRICT RIGHT OF WAY ENGINEER  
June 6, 1972  
DATE

CITY OF POMONA

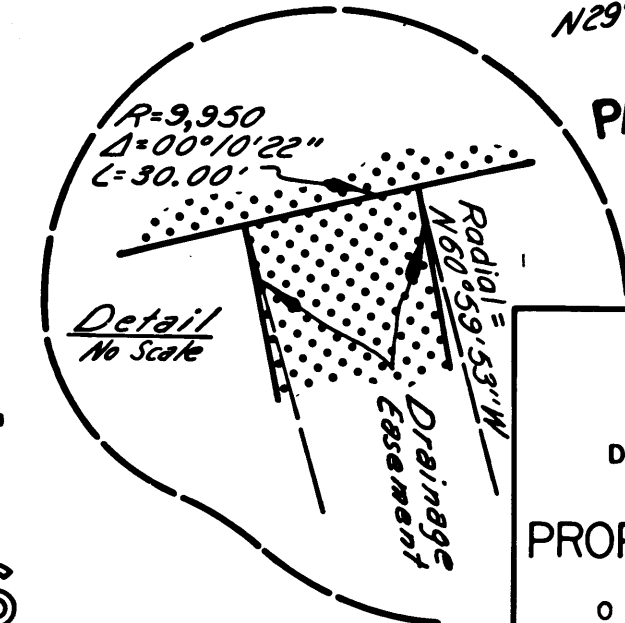


County of Los Angeles  
City of Pomona



TRACT NO. 28853  
M.B. 772-12/13

COUNTY OF  
LOS ANGELES



STATE OF CALIFORNIA  
TRANSPORTATION AGENCY  
DEPARTMENT OF PUBLIC WORKS  
DIVISION OF HIGHWAYS

**PROPOSED RELINQUISHMENT**

0 50 100 150 200

AREA TO BE RELINQUISHED SHOWN THUS

ACCESS PROHIBITED

DR'N BY <i>L.W.A.</i>	R/W MAP NO. <i>F-1682</i>
C'LC BY <i>G.J.H.</i>	CONTRACT NO. <i>07-044304</i>
C'K'D BY	<b>REL-792</b>
REVISED	

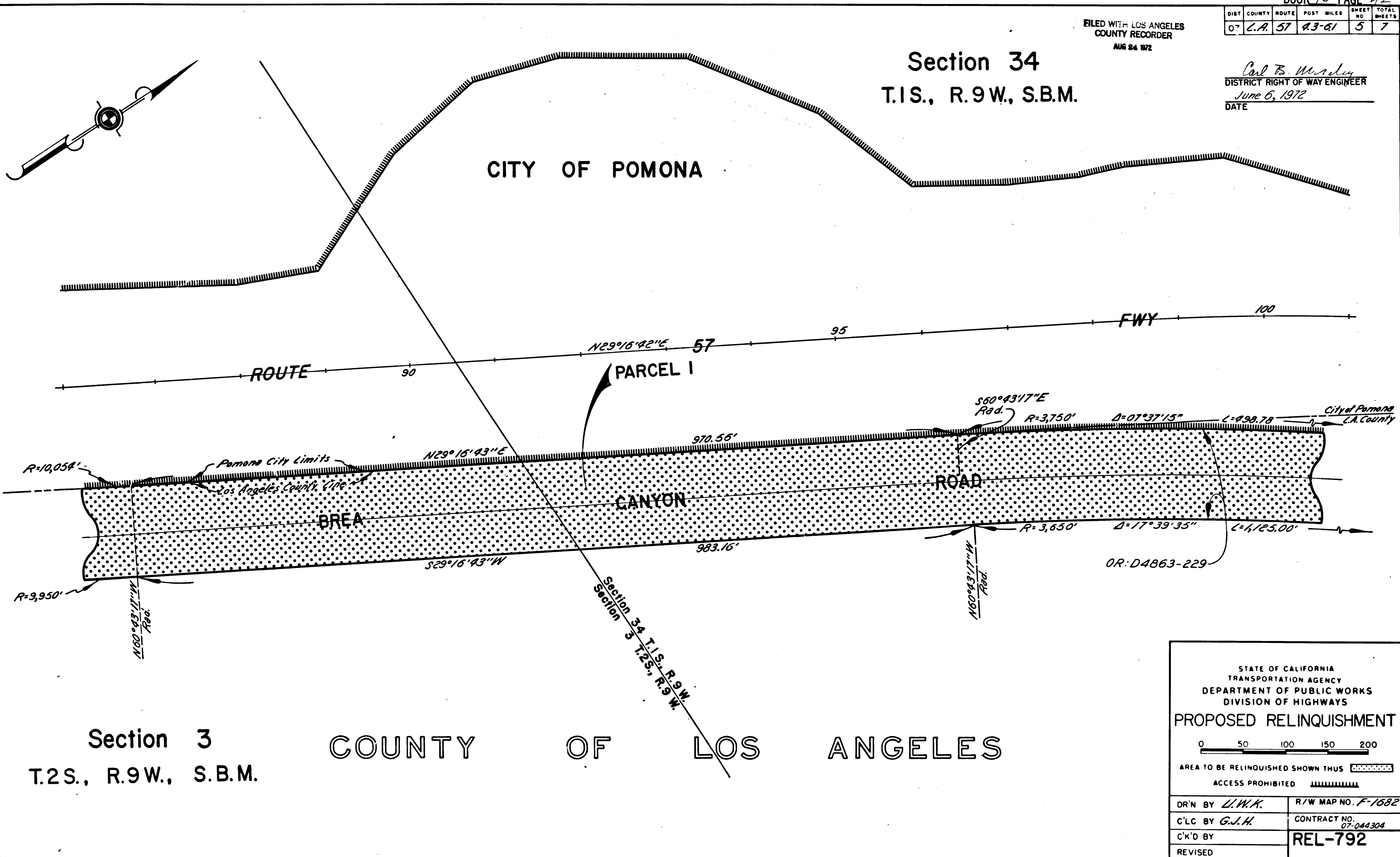
COUNTY ENGINEER'S COPY

FILED WITH LOS ANGELES COUNTY RECORDER  
AUG 24 1972

DIST	COUNTY	ROUTE	POST MILES	SHEET NO	TOTAL SHEETS
07	L.A.	57	43-61	5	7

Section 34  
T.1S., R.9W., S.B.M.

*Carl B. Wurdley*  
DISTRICT RIGHT OF WAY ENGINEER  
June 6, 1972  
DATE



Section 3  
T.2S., R.9W., S.B.M.

COUNTY OF LOS ANGELES

STATE OF CALIFORNIA  
TRANSPORTATION AGENCY  
DEPARTMENT OF PUBLIC WORKS  
DIVISION OF HIGHWAYS

PROPOSED RELINQUISHMENT

AREA TO BE RELINQUISHED SHOWN THUS

ACCESS PROHIBITED

DR'N BY <i>L.W.K.</i>	R/W MAP NO. <i>F-1682</i>
C'LC BY <i>G.J.H.</i>	CONTRACT NO. <i>07-044304</i>
C'K'D BY	REL-792
REVISED	

COUNTY ENGINEER'S COPY



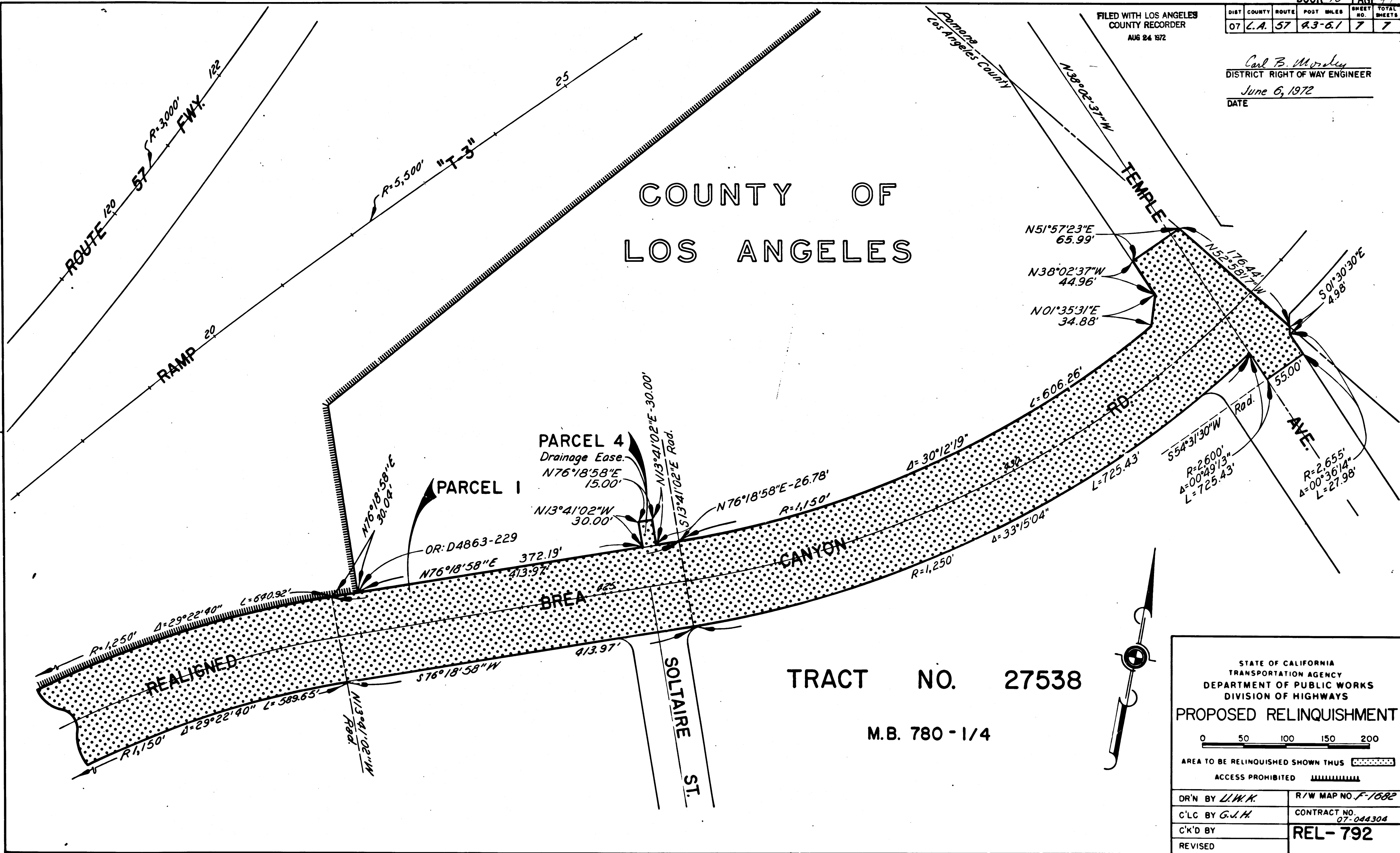


FILED WITH LOS ANGELES COUNTY RECORDER  
AUG 24 1972

DIST	COUNTY	ROUTE	POST MILES	SHEET NO.	TOTAL SHEETS
07	L.A.	57	43-6.1	7	7

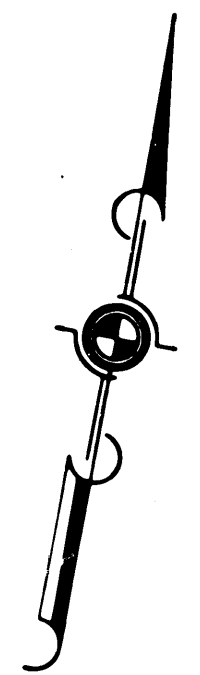
Carl B. Morley  
DISTRICT RIGHT OF WAY ENGINEER  
June 6, 1972  
DATE

COUNTY OF LOS ANGELES



TRACT NO. 27538

M.B. 780 - 1/4



STATE OF CALIFORNIA  
TRANSPORTATION AGENCY  
DEPARTMENT OF PUBLIC WORKS  
DIVISION OF HIGHWAYS

**PROPOSED RELINQUISHMENT**

0 50 100 150 200

AREA TO BE RELINQUISHED SHOWN THUS

ACCESS PROHIBITED

DR'N BY <i>L.W.K.</i>	R/W MAP NO. <i>F-1682</i>
C'LC BY <i>G.J.H.</i>	CONTRACT NO. <i>07-044304</i>
C'K'D BY	<b>REL-792</b>
REVISED	