

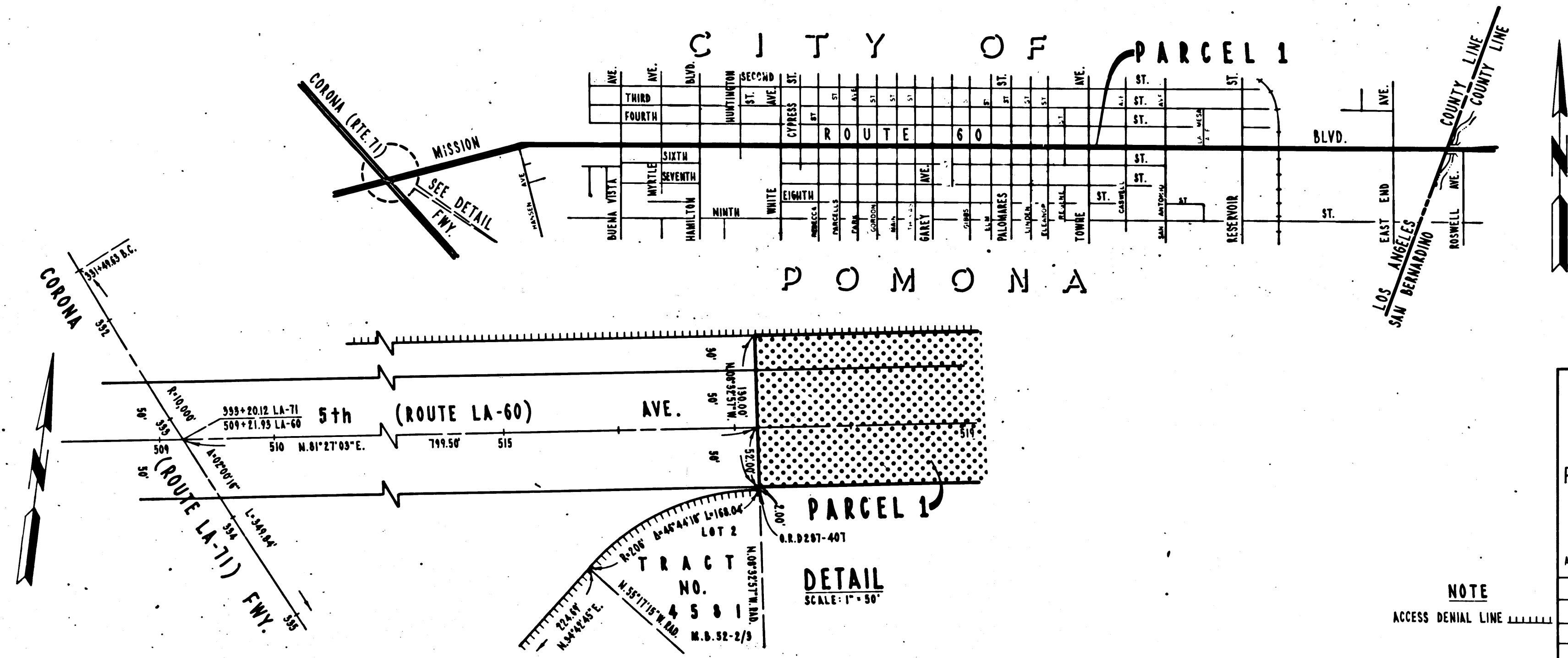
DIST	COUNTY	ROUTE	POST MILES	SHEET NO.	TOTAL SHEETS
07	LA	60	31.9/35.4	1	1

STATE OF CALIFORNIA
 TRANSPORTATION AGENCY
 DEPARTMENT OF PUBLIC WORKS
 DIVISION OF HIGHWAYS

A. H. Hinkel
 DEPUTY DISTRICT ENGINEER
 REGISTERED CIVIL ENGINEER NO. 6416
 July 24, 1972
 DATE

RIGHT OF WAY MAPS OF
STATE HIGHWAY
 IN THE CITY OF POMONA BETWEEN
 CORONA FWY.(RTE.71) AND
 LOS ANGELES/SAN BERNARDINO COUNTY LINE

4067
 FILED
 AT REQUEST OF
 DEPT. OF PUBLIC WORKS
 SEP. 20, 1972
 11 AM
 PAST 3 PM
 IN BOOK 10
 AT PAGE 45
 OF STATE HIGHWAY MAPS
 LOS ANGELES COUNTY, CALIF.
 COUNTY RECORDER
 Free



STATE OF CALIFORNIA
 TRANSPORTATION AGENCY
 DEPARTMENT OF PUBLIC WORKS
 DIVISION OF HIGHWAYS
PROPOSED RELINQUISHMENT

SCALE
 0 1000 2000 3000 4000

AREA TO BE RELINQUISHED SHOWN THUS [stippled pattern]

DR'N BY H. LEE	R/W MAP NO. F-1181.2
C'LC BY J. MORRIS	REF. MAP NO.
C'K'D BY U. KUEHN	REL- 843
REVISED	

NOTE
 ACCESS DENIAL LINE [dashed line symbol]