

DIST	COUNTY	ROUTE	POST MILES	SHEET NO.	TOTAL SHEETS
07	LA	134	8.5/11.5	1	9

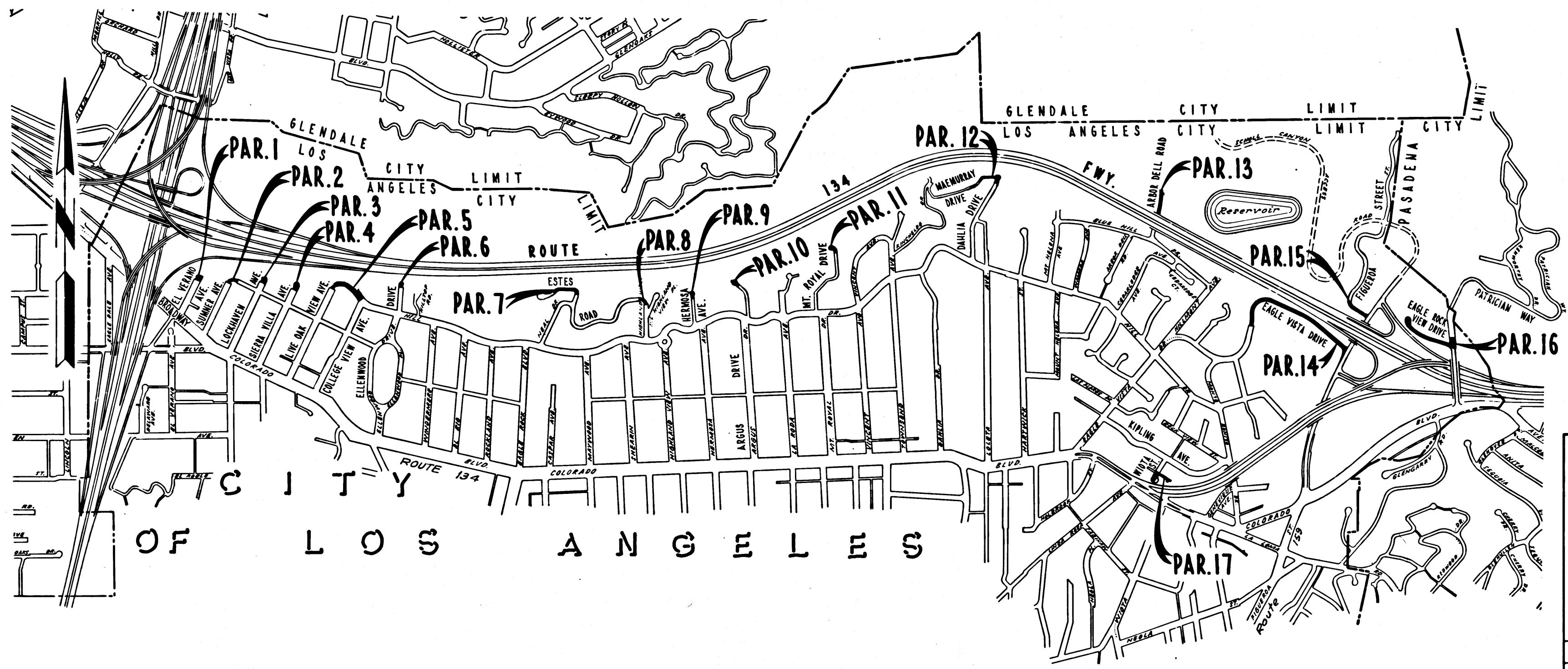
STATE OF CALIFORNIA
 TRANSPORTATION AGENCY
 DEPARTMENT OF PUBLIC WORKS
 DIVISION OF HIGHWAYS

A.L. Hinkelholz
 DEPUTY DISTRICT ENGINEER
 REGISTERED CIVIL ENGINEER NO. 6416
 SEPTEMBER 6, 1972
 DATE

RIGHT OF WAY MAPS OF
STATE HIGHWAY
In the City of Los Angeles Along Rte. 134 Fwy.
Between El Verano Ave. and Los Angeles-Pasadena City Limit Line.

2281

FILED
 AT REQUEST OF
 DEPT. OF PUBLIC WORKS
 OCT. 26, 1972
 1:10 AM
 IN BOOK 10
 BY PAGE 52
 OF STATE HIGHWAY MAPS
 LOS ANGELES COUNTY, CALIF.
 COUNTY RECORDER
 Deputy Free



STATE OF CALIFORNIA
 TRANSPORTATION AGENCY
 DEPARTMENT OF PUBLIC WORKS
 DIVISION OF HIGHWAYS
PROPOSED RELINQUISHMENT

0 600 1200 1800 2400

AREA TO BE RELINQUISHED SHOWN THUS

DR'N BY H.L.	R/W MAP NO F-1164.2, F-1165, F-1165.1, F-1165.2, F-1166, F-1166.1, F-1167
C'LC BY J.M.	CONTRACT NO. 07-020854
C'K'D BY H.W.	REL-651
REVISED	

COUNTY ENGINEER'S COPY

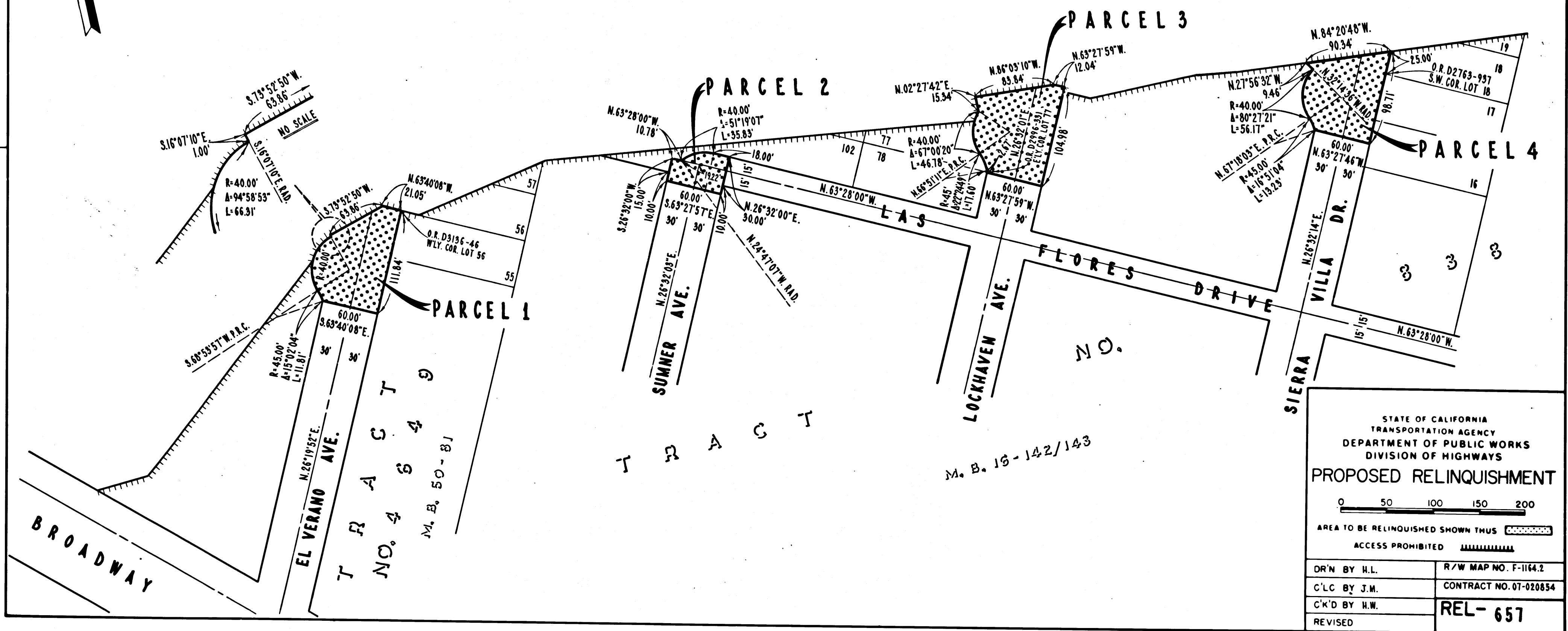
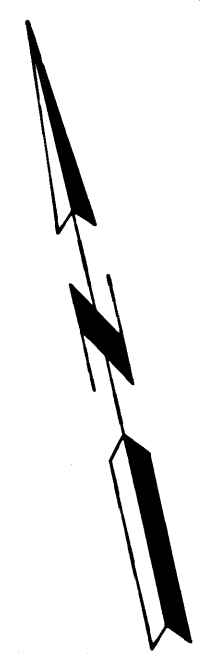
FILED WITH LOS ANGELES COUNTY RECORDER
OCT 26 1972

DIST	COUNTY	ROUTE	POST MILES	SHEET NO.	TOTAL SHEETS
07	LA	134	8.5/11.5	2	9

R.W.F.H.
DISTRICT RIGHT OF WAY ENGINEER
SEPTEMBER 6, 1972
DATE

ROUTE 134 F.W.Y.
R=9000'

CITY OF LOS ANGELES



STATE OF CALIFORNIA
TRANSPORTATION AGENCY
DEPARTMENT OF PUBLIC WORKS
DIVISION OF HIGHWAYS

PROPOSED RELINQUISHMENT

0 50 100 150 200

AREA TO BE RELINQUISHED SHOWN THUS

ACCESS PROHIBITED

DR'N BY H.L.	R/W MAP NO. F-1164.2
C'LC BY J.M.	CONTRACT NO. 07-020854
C'K'D BY H.W.	REL-657
REVISED	

COUNTY ENGINEER'S COPY

DIST	COUNTY	ROUTE	POST MILES	SHEET NO.	TOTAL SHEETS
07	LA	134	8.5/11.5	3	9

CITY OF LOS ANGELES

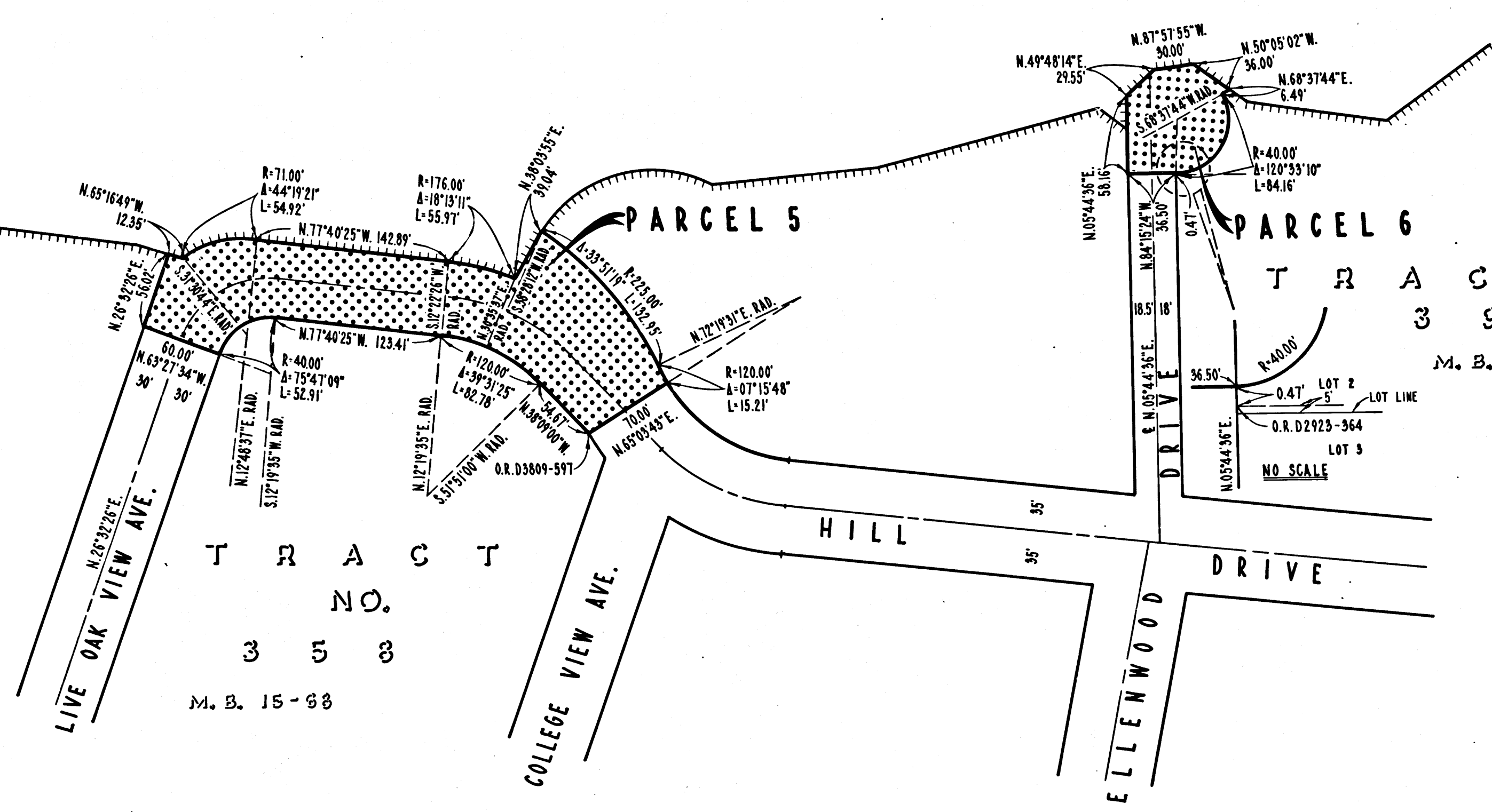
FILED WITH LOS ANGELES COUNTY RECORDER
OCT 26 1972

R.W. Folmer
DISTRICT RIGHT OF WAY ENGINEER
SEPTEMBER 6, 1972
DATE



ROUTE 134 F.W.Y.

1290 1295 1300



TRACT NO. 353
M. B. 15-98

TRACT NO. 3943
M. B. 48-89

STATE OF CALIFORNIA
TRANSPORTATION AGENCY
DEPARTMENT OF PUBLIC WORKS
DIVISION OF HIGHWAYS

PROPOSED RELINQUISHMENT

0 50 100 150 200

AREA TO BE RELINQUISHED SHOWN THUS

ACCESS PROHIBITED

DR'N BY H.L.	R/W MAP NO. F-1164.2
C'LC BY J.M.	CONTRACT NO. 07-020854
C'K'D BY H.W.	REL-657
REVISED	

DIST	COUNTY	ROUTE	POST MILES	SHEET NO.	TOTAL SHEETS
07	LA	134	8.5/11.5	4	9

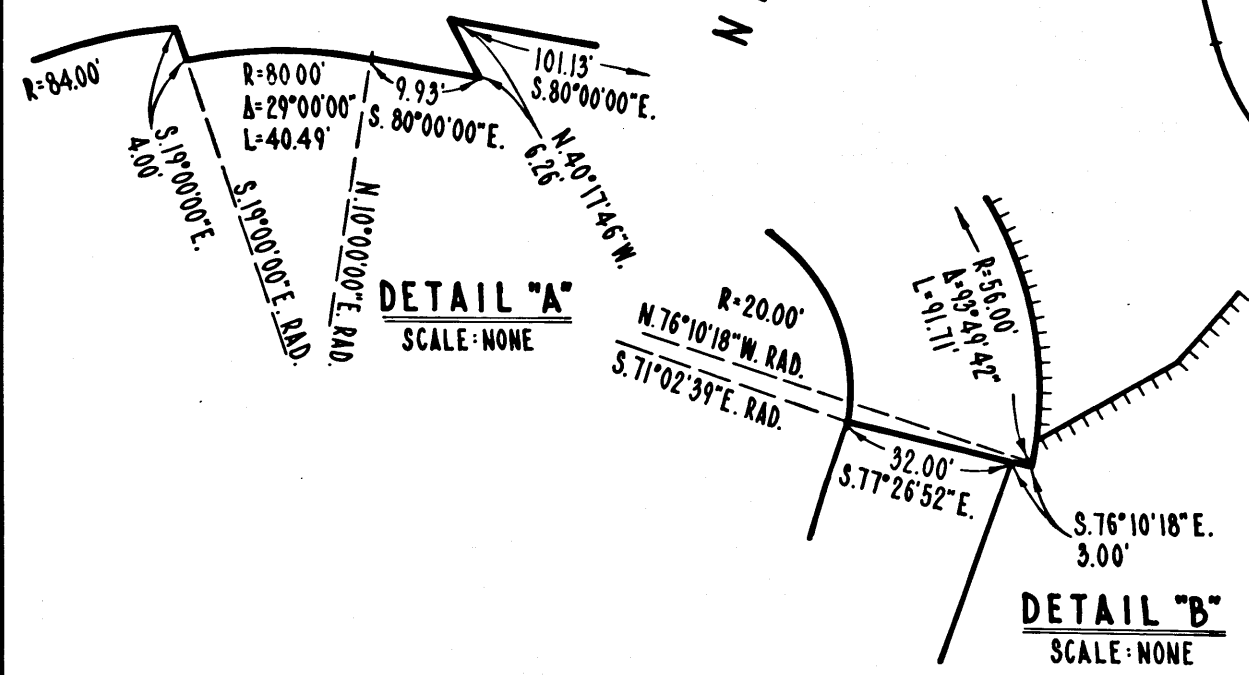
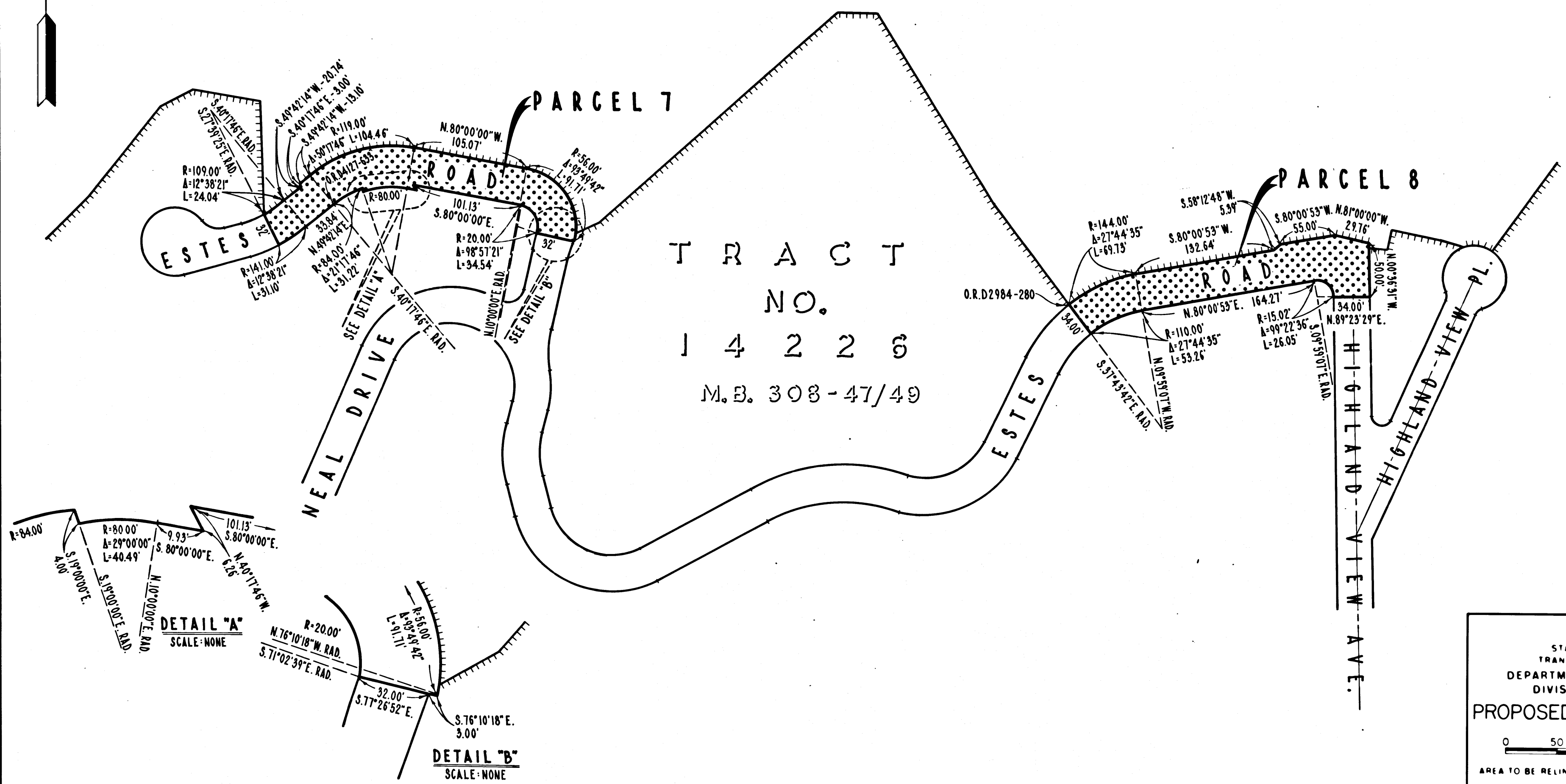
R.W. Fisher
 DISTRICT RIGHT OF WAY ENGINEER
 SEPTEMBER 6, 1972
 DATE

FILED WITH LOS ANGELES
 COUNTY RECORDER
 OCT 26 1972

ROUTE 134 F.W.Y. R-4000'
 1315 1320 1325
 N. 86° 58' 32" E.

CITY OF LOS ANGELES

TRACT NO. 14226
 M.B. 308-47/49



STATE OF CALIFORNIA
 TRANSPORTATION AGENCY
 DEPARTMENT OF PUBLIC WORKS
 DIVISION OF HIGHWAYS

PROPOSED RELINQUISHMENT

0 50 100 150 200

AREA TO BE RELINQUISHED SHOWN THUS

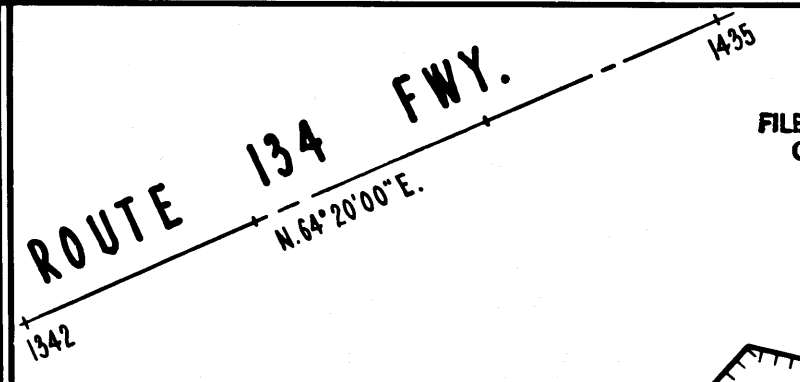
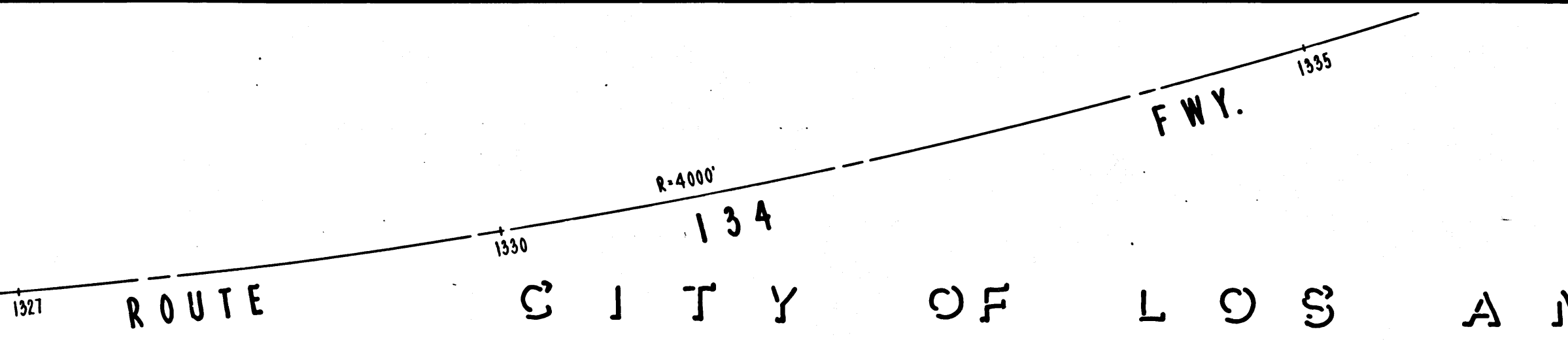
ACCESS PROHIBITED

DR'N BY H.L.	R/W MAP NO. F-1165
C'LC BY J.M.	CONTRACT NO. 07-020854
C'K'D BY H.W.	REL-657
REVISED	

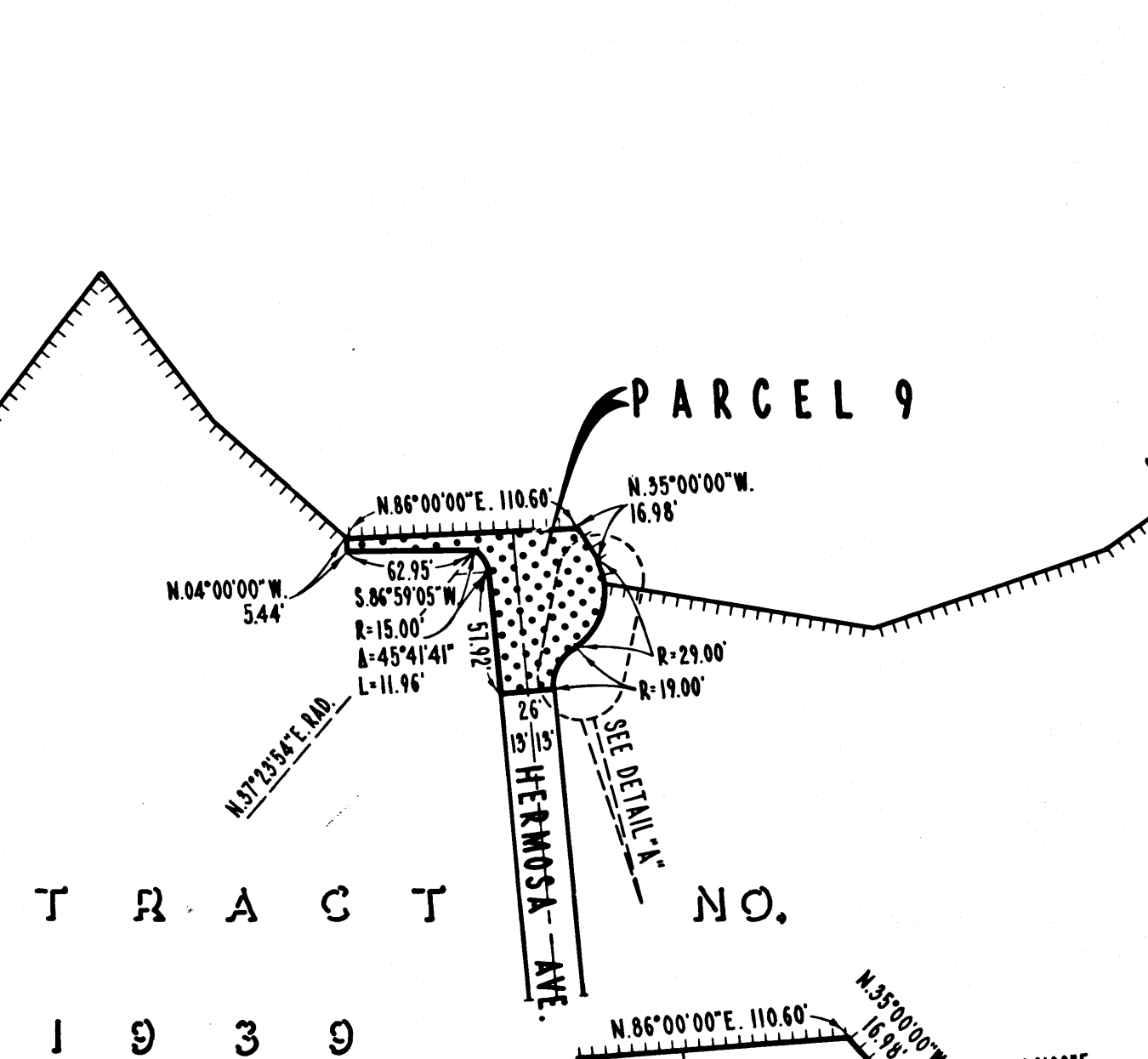
DIST	COUNTY	ROUTE	POST MILES	SHEET NO.	TOTAL SHEETS
07	LA	134	8.5/11.5	5	9

FILED WITH LOS ANGELES COUNTY RECORDER
OCT 26 1972

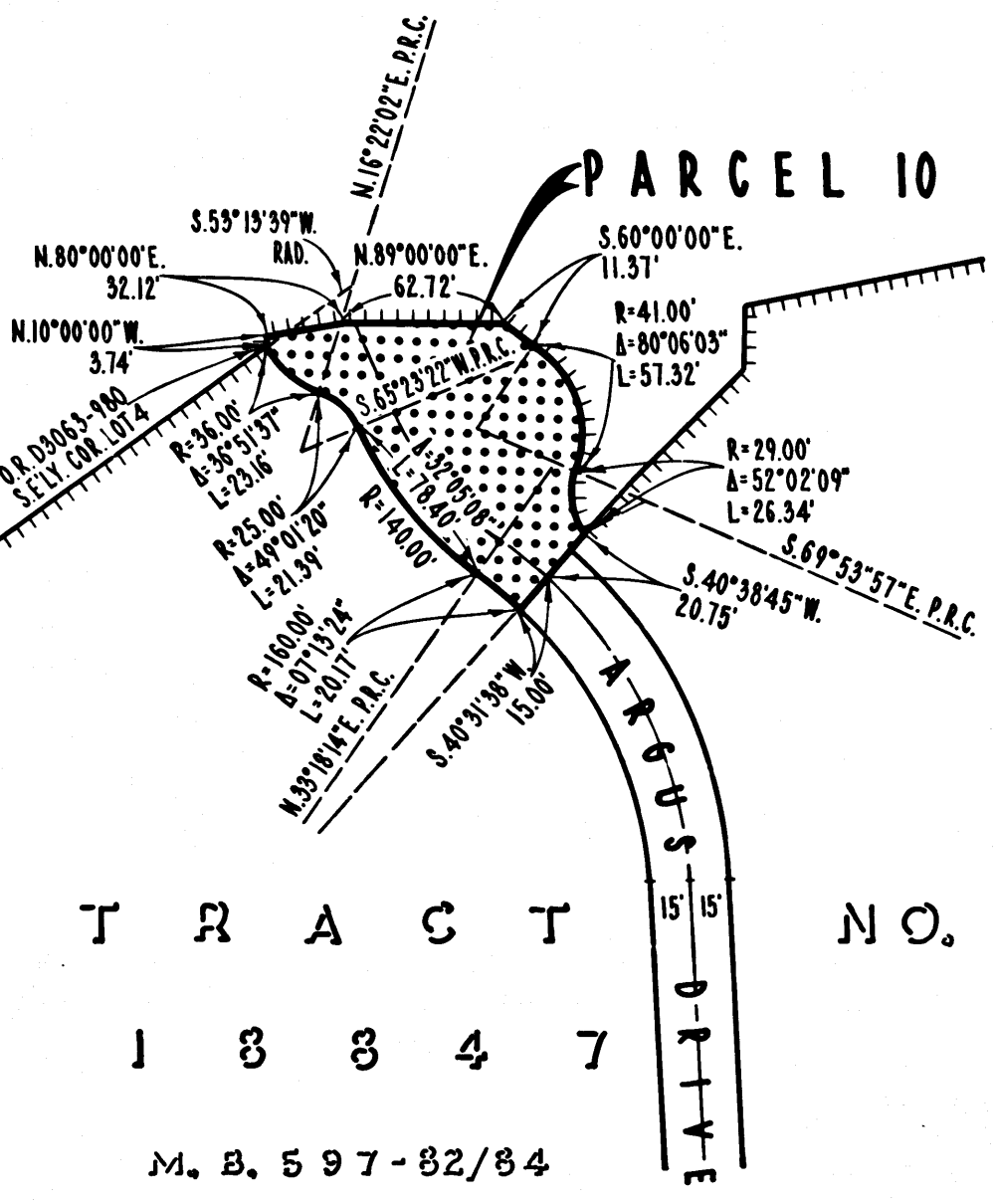
R.W. Feltner
DISTRICT RIGHT OF WAY ENGINEER
SEPTEMBER 6, 1972
DATE



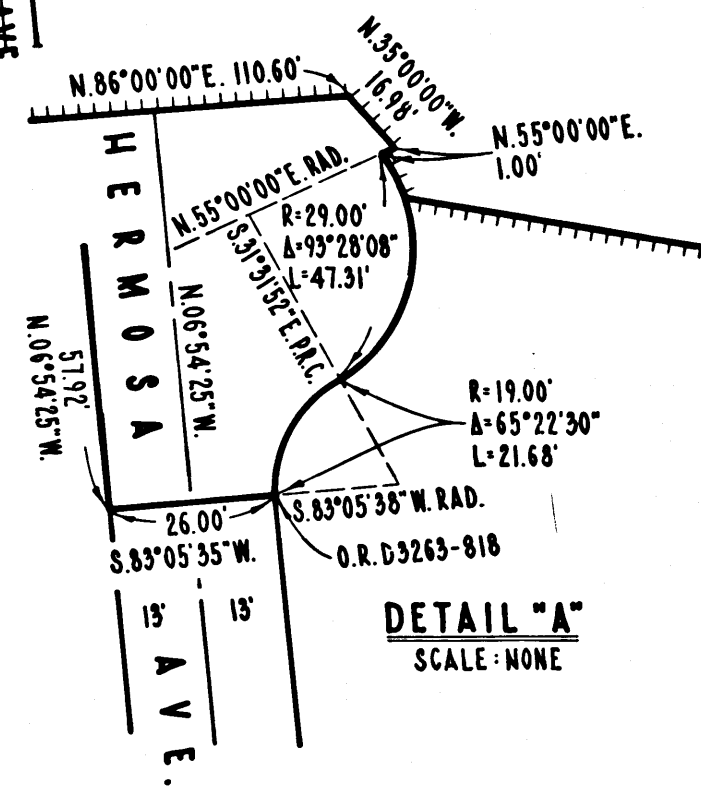
CITY OF LOS ANGELES



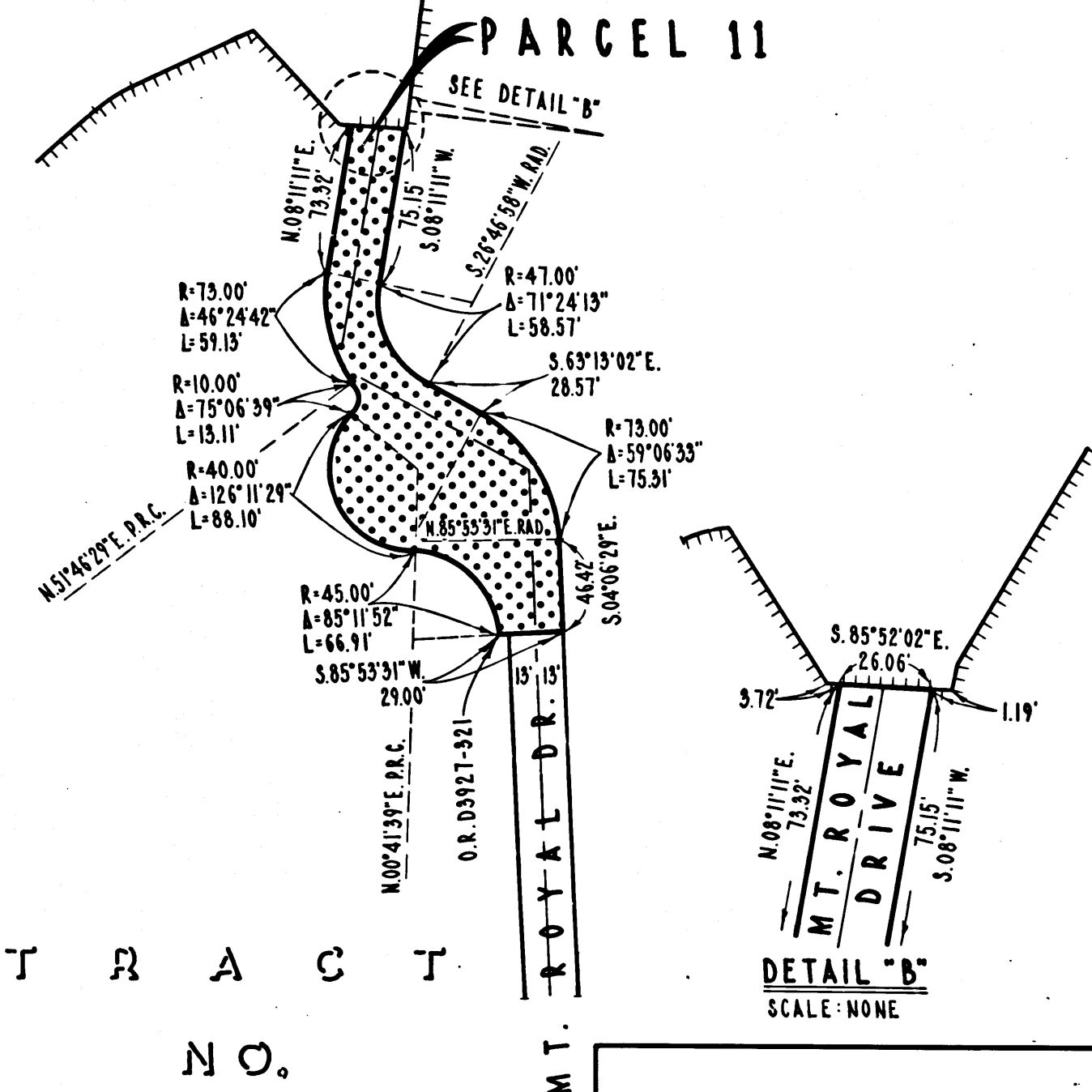
TRACT NO.
11939
M. B. 222-37/33



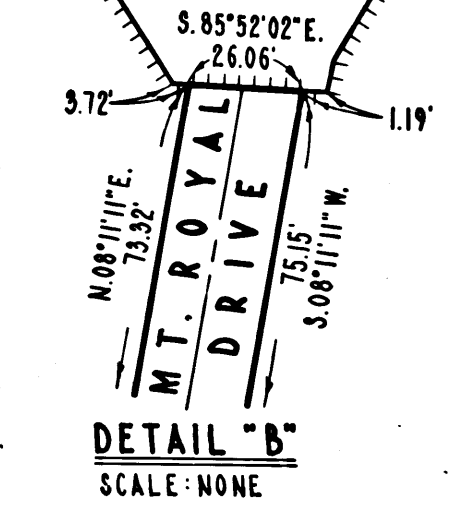
TRACT NO.
13347
M. B. 597-82/84



DETAIL "A"
SCALE: NONE



TRACT NO.
9030
M. B. 143-44/45



DETAIL "B"
SCALE: NONE

STATE OF CALIFORNIA
TRANSPORTATION AGENCY
DEPARTMENT OF PUBLIC WORKS
DIVISION OF HIGHWAYS

PROPOSED RELINQUISHMENT

0 50 100 150 200

AREA TO BE RELINQUISHED SHOWN THUS

ACCESS PROHIBITED

DR'N BY HL.	R/W MAP NO. F-1165.1
C'LC BY J.M.	CONTRACT NO. 07-020854
C'D BY H.W.	REL-657
REVISED	

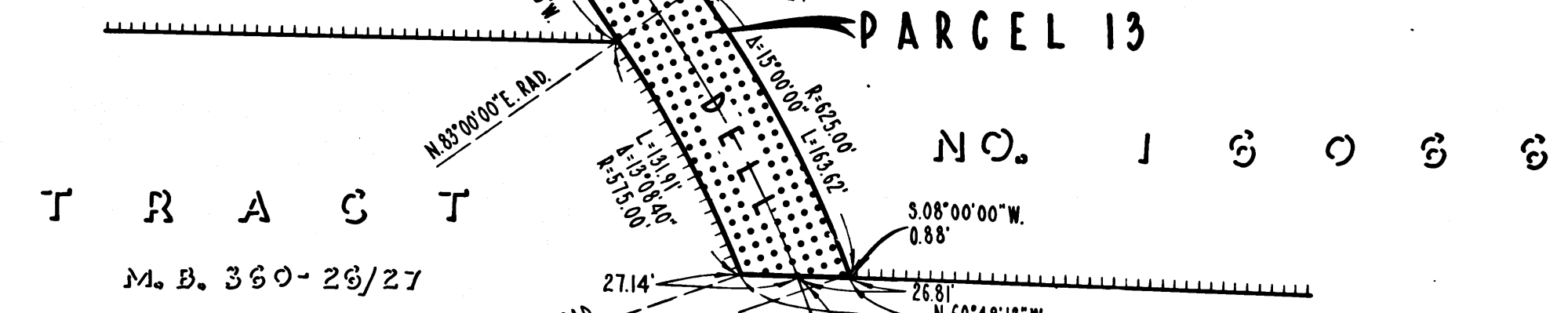
DIST	COUNTY	ROUTE	POST MILES	SHEET NO	TOTAL SHEETS
07	LA	134	8.5/11.5	6	9

FILED WITH LOS ANGELES COUNTY RECORDER
OCT 26 1972

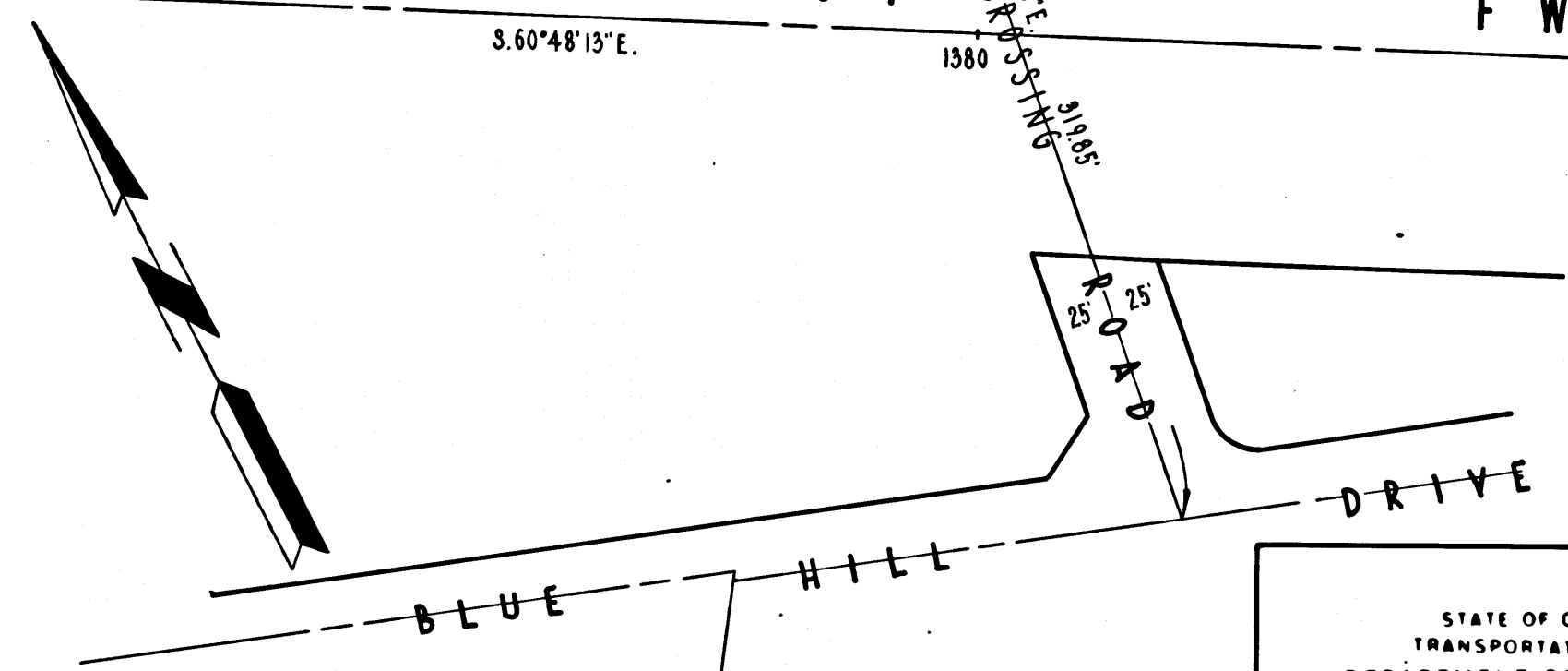
R.W.F.M.
DISTRICT RIGHT OF WAY ENGINEER
SEPTEMBER 6, 1972
DATE

CITY OF LOS ANGELES

TRACT NO.
17725
M.B. 436-23/24



ROUTE 134 F.W.Y.
3.60°48'13\"/>



STATE OF CALIFORNIA
TRANSPORTATION AGENCY
DEPARTMENT OF PUBLIC WORKS
DIVISION OF HIGHWAYS

PROPOSED RELINQUISHMENT

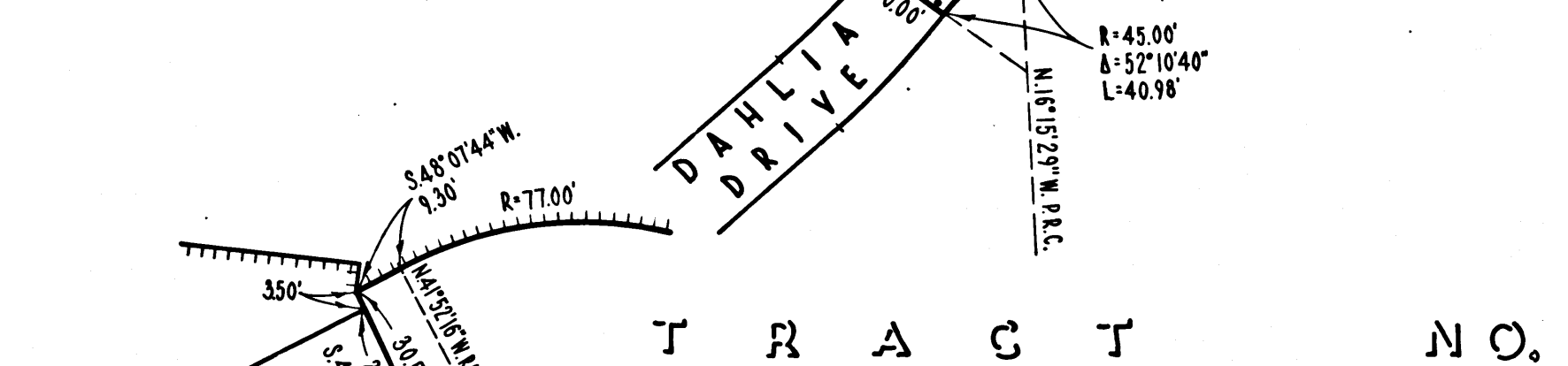
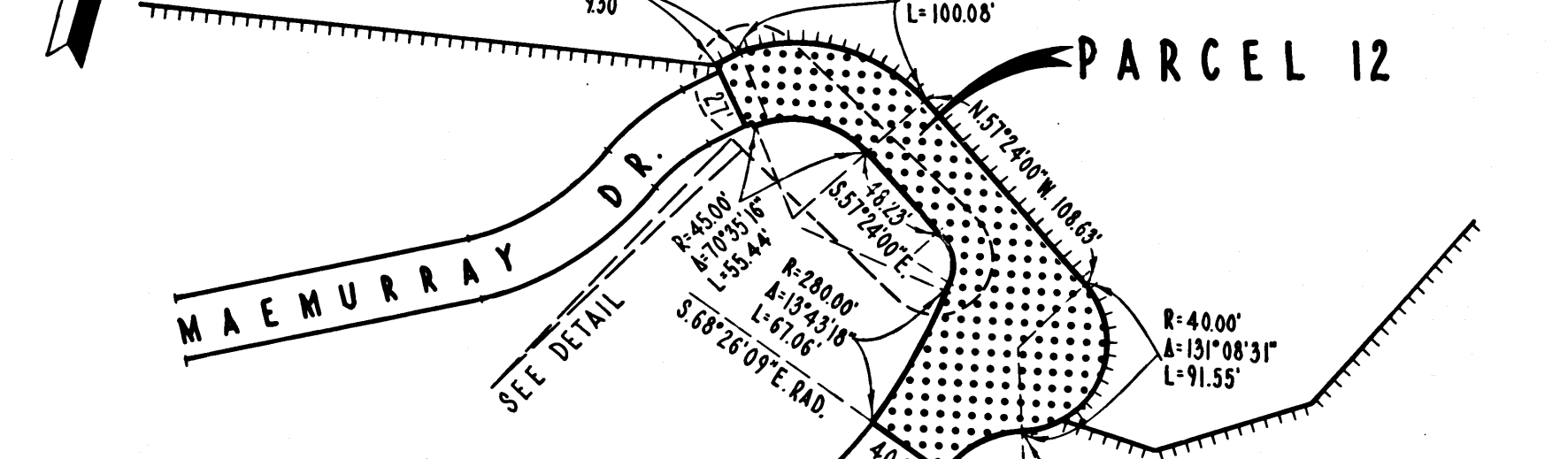
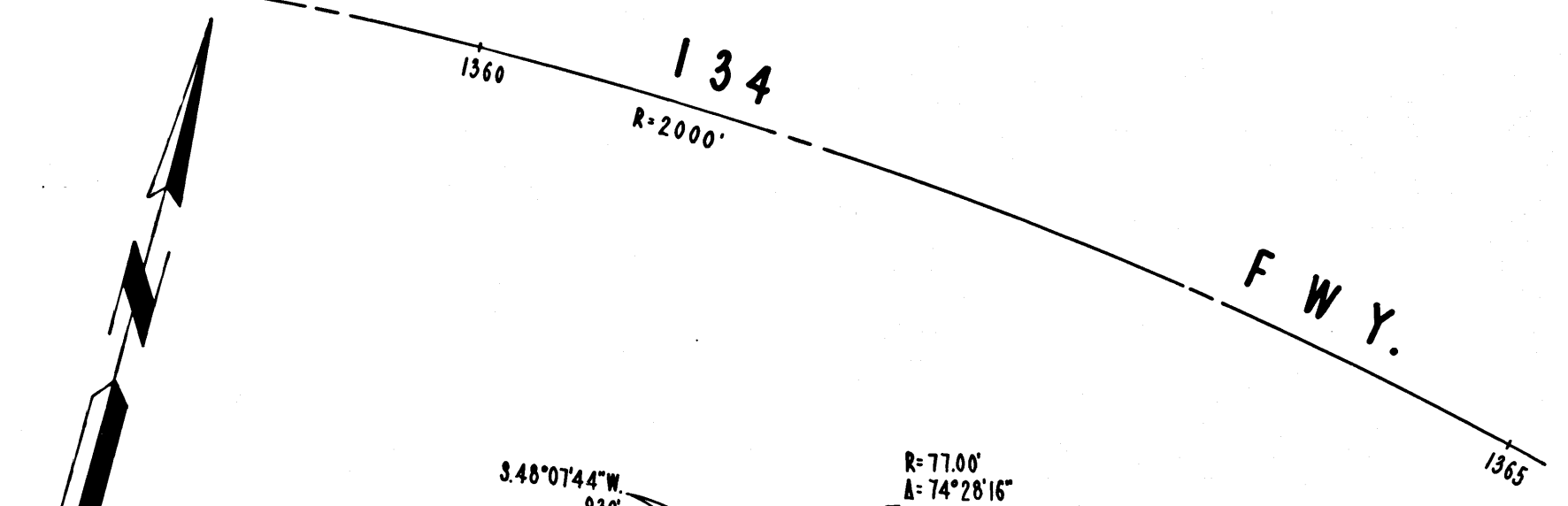
0 50 100 150 200

AREA TO BE RELINQUISHED SHOWN THUS [Dotted Pattern]

ACCESS PROHIBITED [Hatched Pattern]

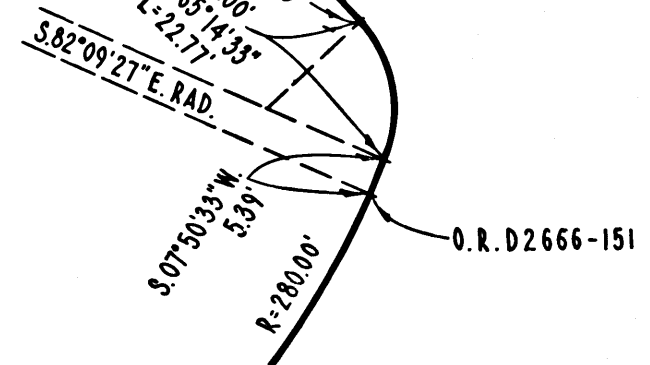
DR'N BY H.L.	R/W MAP NO. F-1165.1, F-1165.2
C/LC BY J.M.	CONTRACT NO. 07-020854
C'K'D BY H.W.	REL-657
REVISED	

CITY OF LOS ANGELES



TRACT NO.
7474
M.B. 119-27/29

DETAIL "A"
SCALE - NONE



CITY OF LOS ANGELES

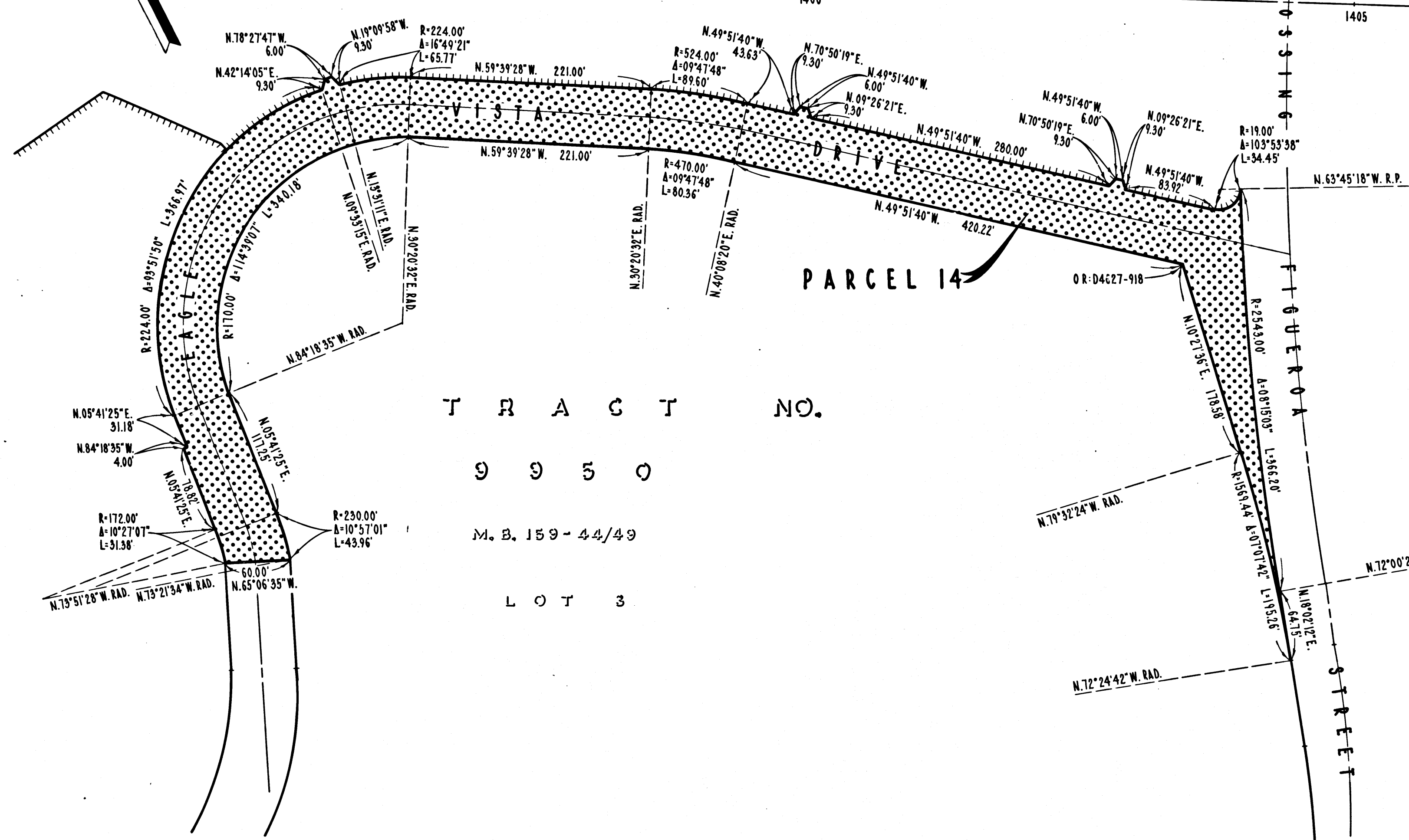
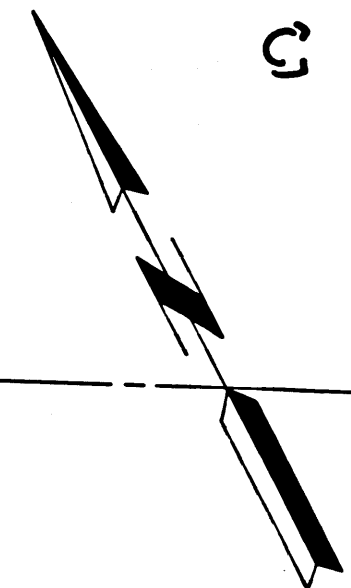
BOOK 10 PAGE 51

DIST	COUNTY	ROUTE	POST MILES	SHEET NO	TOTAL SHEETS
07	LA	134	8.5/11.5	7	9

FILED WITH LOS ANGELES COUNTY RECORDER
OCT 26 1972

R.W. Fisher
DISTRICT RIGHT OF WAY ENGINEER
SEPTEMBER 6, 1972
DATE

ROUTE 134 F.W.Y.



T R A C T N O.

9 9 5 0

M. B. 159-44/49

L O T 3

STATE OF CALIFORNIA
TRANSPORTATION AGENCY
DEPARTMENT OF PUBLIC WORKS
DIVISION OF HIGHWAYS
PROPOSED RELINQUISHMENT

0 50 100 150 200

AREA TO BE RELINQUISHED SHOWN THUS [Dotted Pattern]
ACCESS PROHIBITED [Hatched Pattern]

DR'N BY H.L.	R/W MAP NO. F-1166, F-1166.1
C'LC BY J.M.	CONTRACT NO. 07-020854
CK'D BY H.W.	REL-657
REVISED	

COUNTY ENGINEER'S COPY

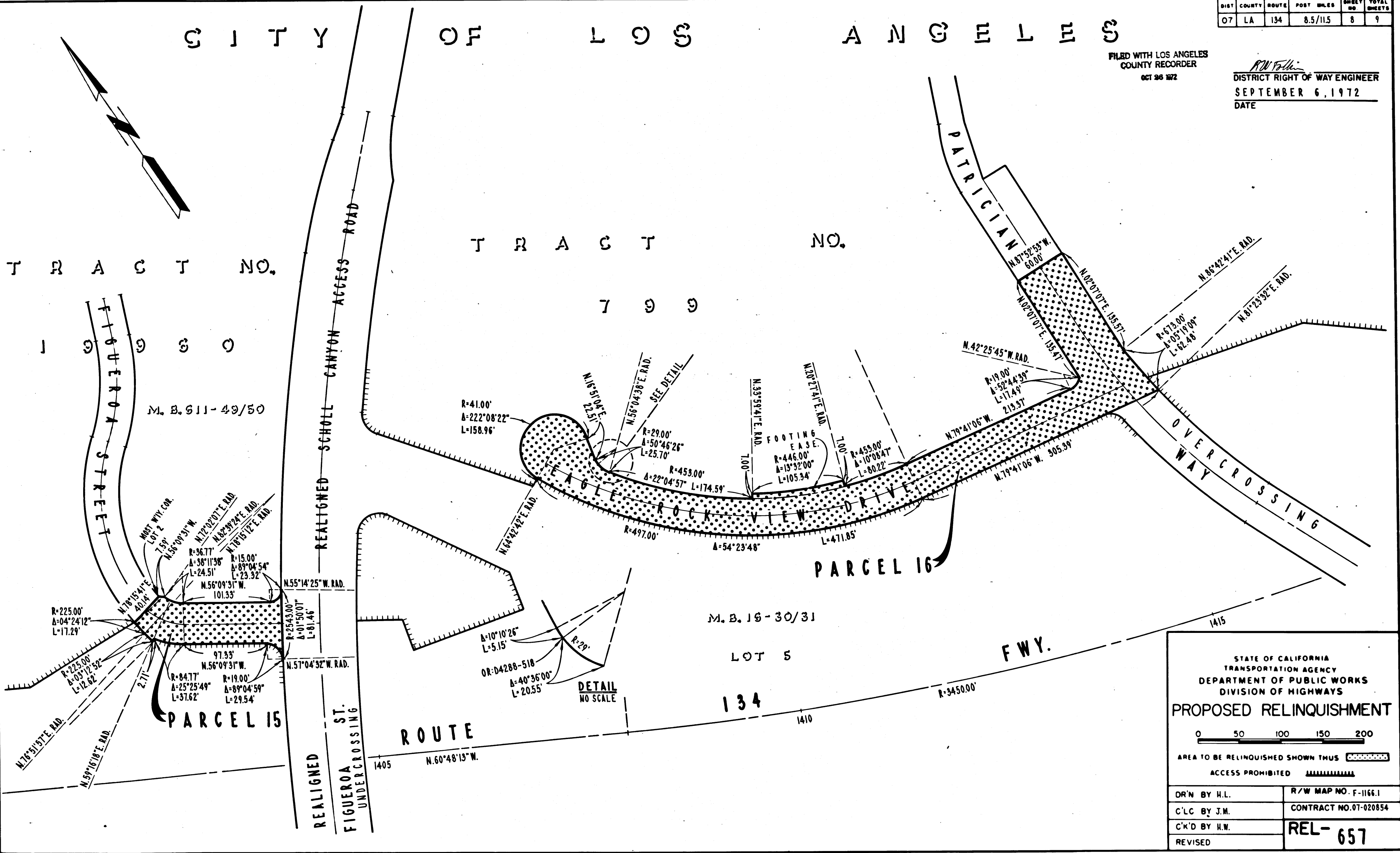
CITY OF LOS ANGELES

BOOK 10 PAGE 59

DIST	COUNTY	ROUTE	POST MILES	SHEET NO.	TOTAL SHEETS
07	LA	134	8.5/11.5	8	9

FILED WITH LOS ANGELES COUNTY RECORDER
OCT 26 1972

DISTRICT RIGHT OF WAY ENGINEER
SEPTEMBER 6, 1972
DATE



STATE OF CALIFORNIA
TRANSPORTATION AGENCY
DEPARTMENT OF PUBLIC WORKS
DIVISION OF HIGHWAYS

PROPOSED RELINQUISHMENT

0 50 100 150 200

AREA TO BE RELINQUISHED SHOWN THUS [Stippled Area]

ACCESS PROHIBITED [Hatched Area]

DR'N BY H.L.	R/W MAP NO. F-1166.1
C'LC BY J.M.	CONTRACT NO. 07-020854
C'K'D BY H.W.	REL-657
REVISED	

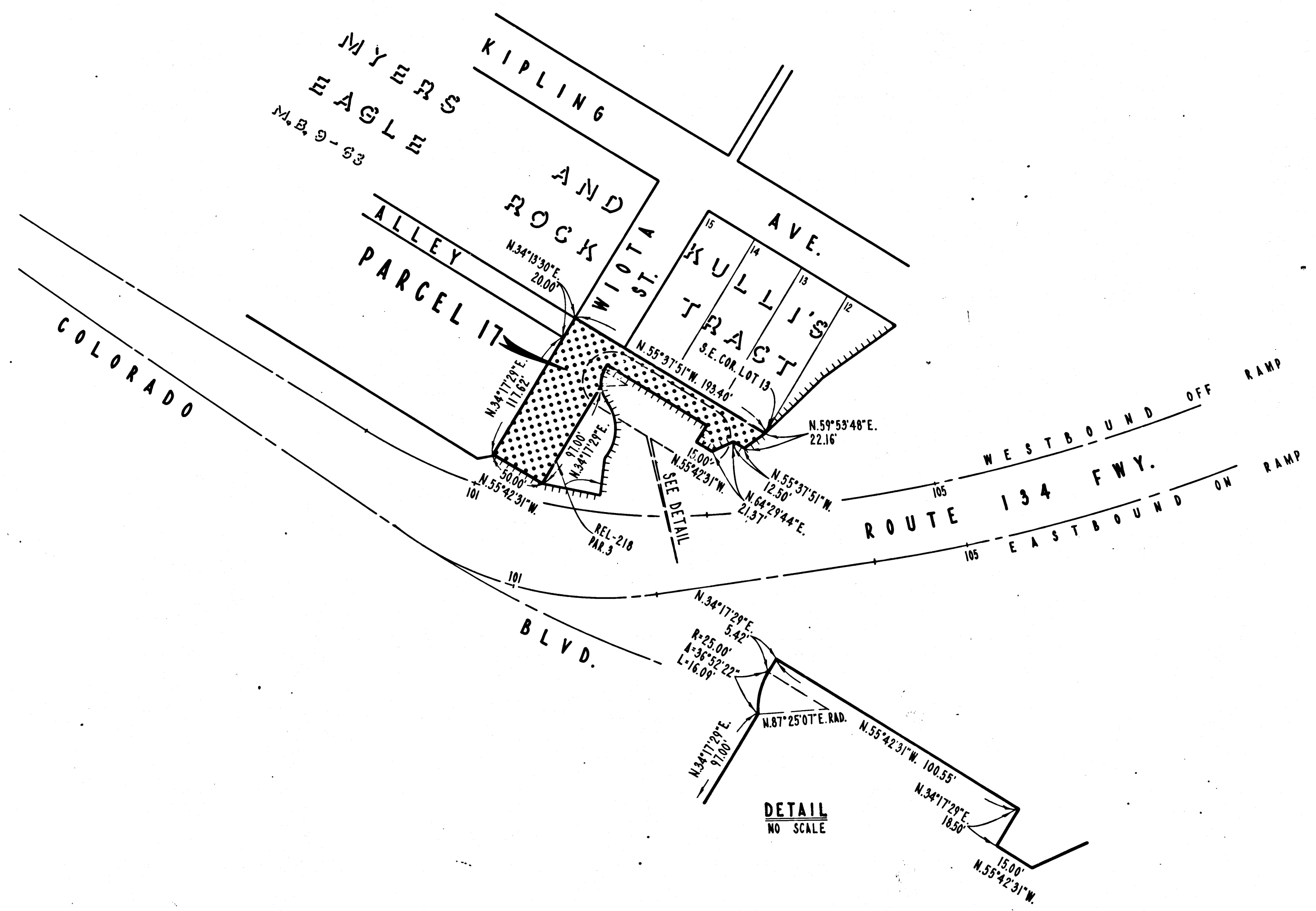
CITY OF LOS ANGELES

BOOK 10 PAGE 60

DIST	COUNTY	ROUTE	POST MILES	SHEET NO.	TOTAL SHEETS
07	LA	134	8.5/11.5	9	9

FILED WITH LOS ANGELES COUNTY RECORDER
OCT 26 1972

R.W.G.H.
DISTRICT RIGHT OF WAY ENGINEER
SEPTEMBER 6, 1972
DATE



STATE OF CALIFORNIA
TRANSPORTATION AGENCY
DEPARTMENT OF PUBLIC WORKS
DIVISION OF HIGHWAYS

PROPOSED RELINQUISHMENT

0 50 100 150 200

AREA TO BE RELINQUISHED SHOWN THUS

ACCESS PROHIBITED

DR'N BY H.L.	R/W MAP NO. F-1167
C'LC BY J.M.	CONTRACT NO. 07-020854
C'K'D BY H.W.	REL-657
REVISED	

COUNTY ENGINEER'S COPY