

DIST	COUNTY	ROUTE	POST MILES	SHEET NO.	TOTAL SHEETS
07	L.A.	57	6.1	1	1

STATE OF CALIFORNIA  
 TRANSPORTATION AGENCY  
 DEPARTMENT OF PUBLIC WORKS  
 DIVISION OF HIGHWAYS

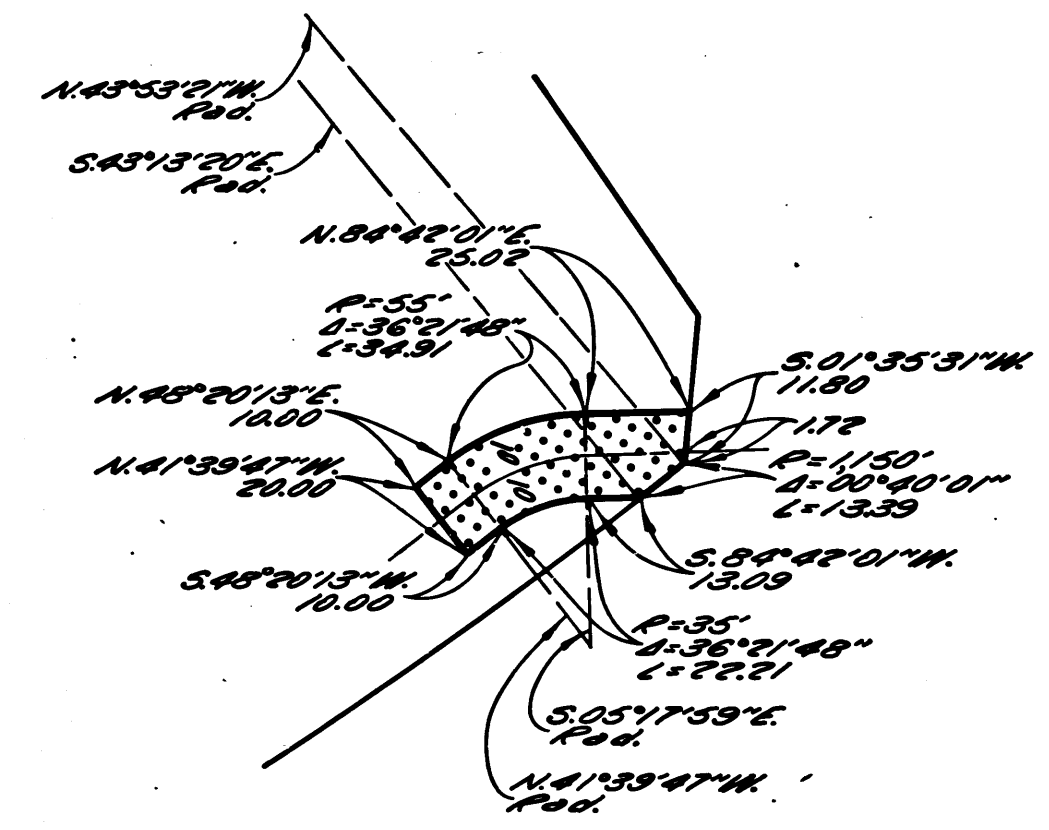
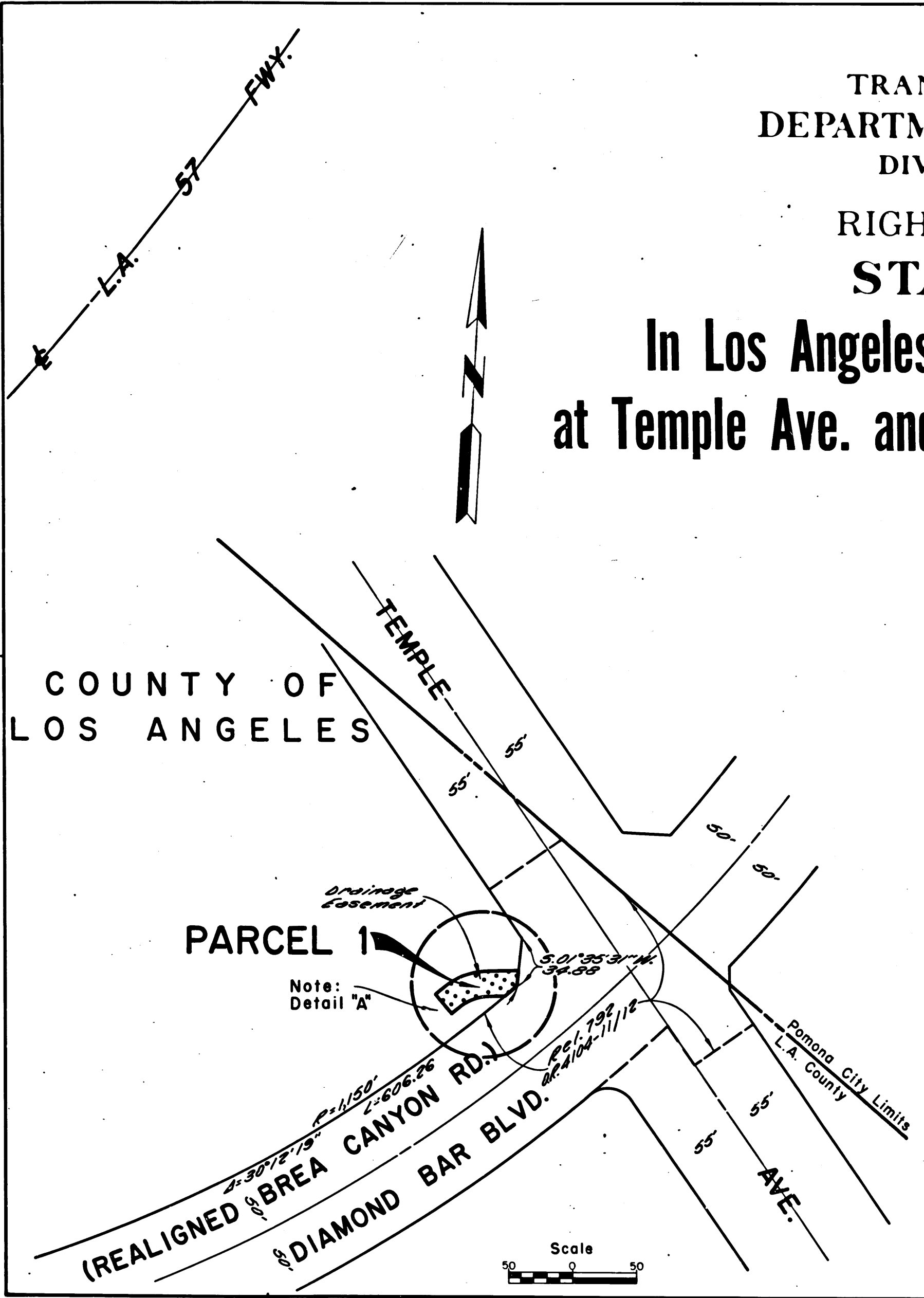
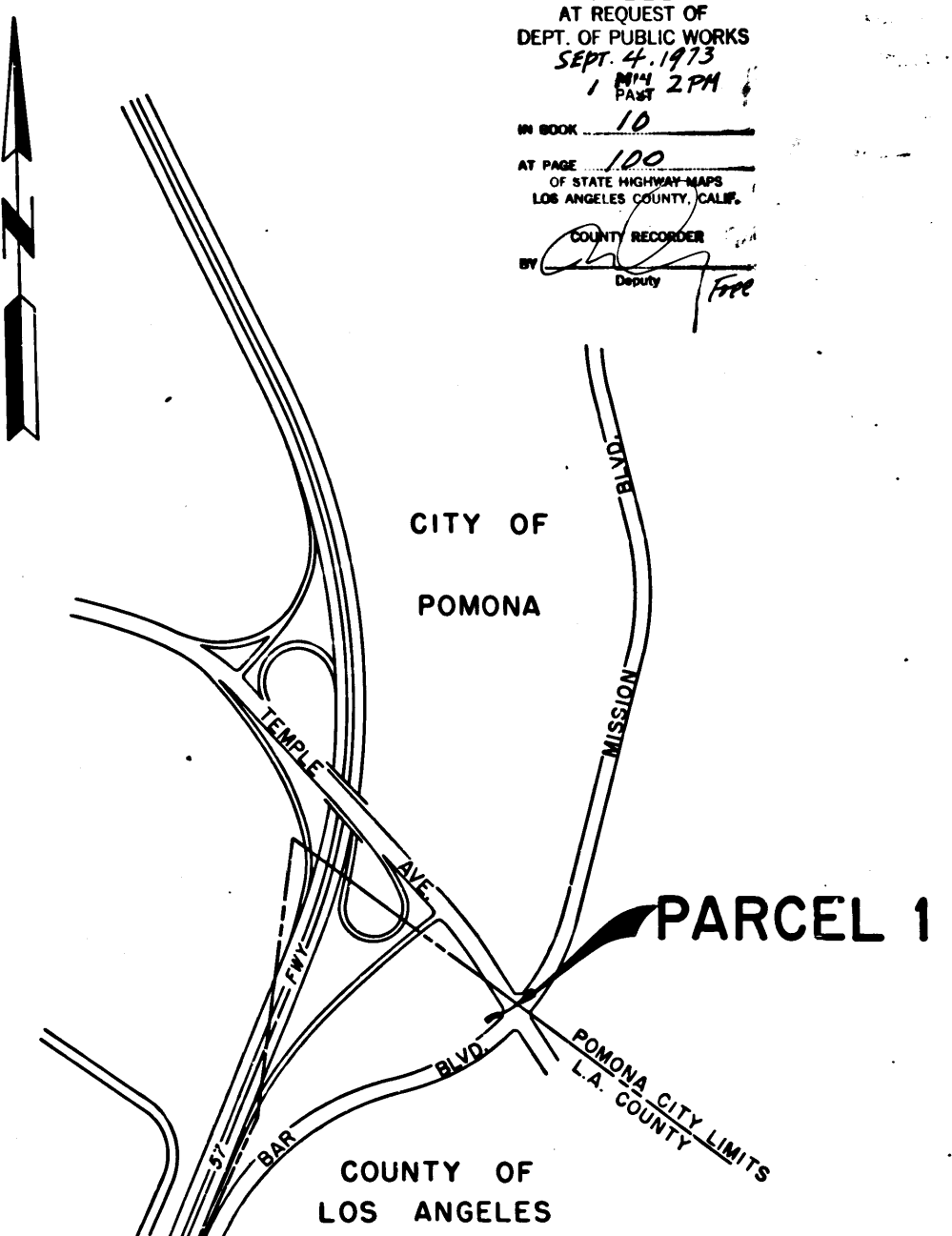
RIGHT OF WAY MAPS OF  
**STATE HIGHWAY**  
**In Los Angeles County Along Rte. 57 Fwy.**  
**at Temple Ave. and Diamond Bar Blvd. Intersection.**

*A.L. Hinkel*  
 DEPUTY DISTRICT ENGINEER  
 REGISTERED CIVIL ENGINEER NO. 6416

6-27-73  
 DATE

2579

FILED  
 AT REQUEST OF  
 DEPT. OF PUBLIC WORKS  
 SEPT. 4, 1973  
 1 PM 2 PM  
 IN BOOK 10  
 AT PAGE 100  
 OF STATE HIGHWAY MAPS  
 LOS ANGELES COUNTY, CALIF.  
 COUNTY RECORDER  
 BY *[Signature]*



Detail "A"  
 Not to Scale

STATE OF CALIFORNIA  
 TRANSPORTATION AGENCY  
 DEPARTMENT OF PUBLIC WORKS  
 DIVISION OF HIGHWAYS

**PROPOSED RELINQUISHMENT**

0 600 1200 1800 2400

AREA TO BE RELINQUISHED SHOWN THUS

DR'N BY P.H.	R/W MAP NO. F1682-2
C'LC BY J.M.	CONTRACT NO. 07-J44304
C'KD BY H.L.	<b>REL-938</b>
REVISED	

207