

DIST	COUNTY	ROUTE	POST MILES	SHEET NO.	TOTAL SHEETS
07	L.A.	11	12-14	1	2

STATE OF CALIFORNIA
 TRANSPORTATION AGENCY
 DEPARTMENT OF PUBLIC WORKS
 DIVISION OF HIGHWAYS

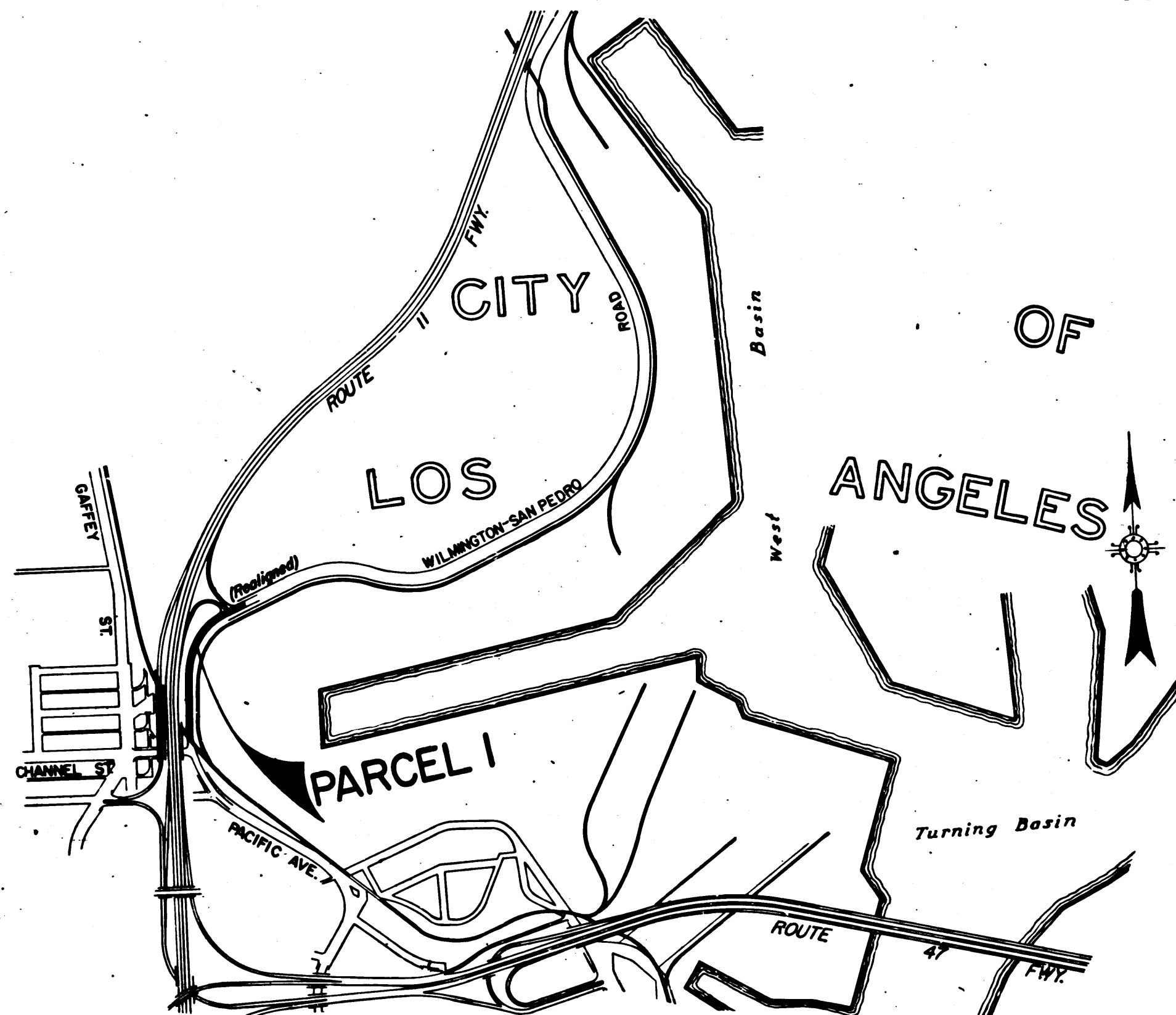
A. H. Huelbeck
 DEPUTY DISTRICT ENGINEER
 REGISTERED CIVIL ENGINEER NO. 6416
 April 9, 1973
 DATE

RIGHT OF WAY MAPS OF
 STATE HIGHWAY

In the City of Los Angeles on (Realigned) Wilmington-San Pedro Road
 between Channel St. and 0.2 Mile North of Channel St.

2229

FILED
 AT REQUEST OF
 DEPT. OF PUBLIC WORKS
 MAY 22 1973
 47 PAST 9 AM
 IN BOOK 11
 AT PAGE 1
 OF STATE HIGHWAY MAPS
 LOS ANGELES COUNTY, CALIF.
 COUNTY RECORDER
 BY *[Signature]*
 Deputy
 File



STATE OF CALIFORNIA
 TRANSPORTATION AGENCY
 DEPARTMENT OF PUBLIC WORKS
 DIVISION OF HIGHWAYS

PROPOSED RELINQUISHMENT

0 600 1200 1800 2400

AREA TO BE RELINQUISHED SHOWN THUS ████████

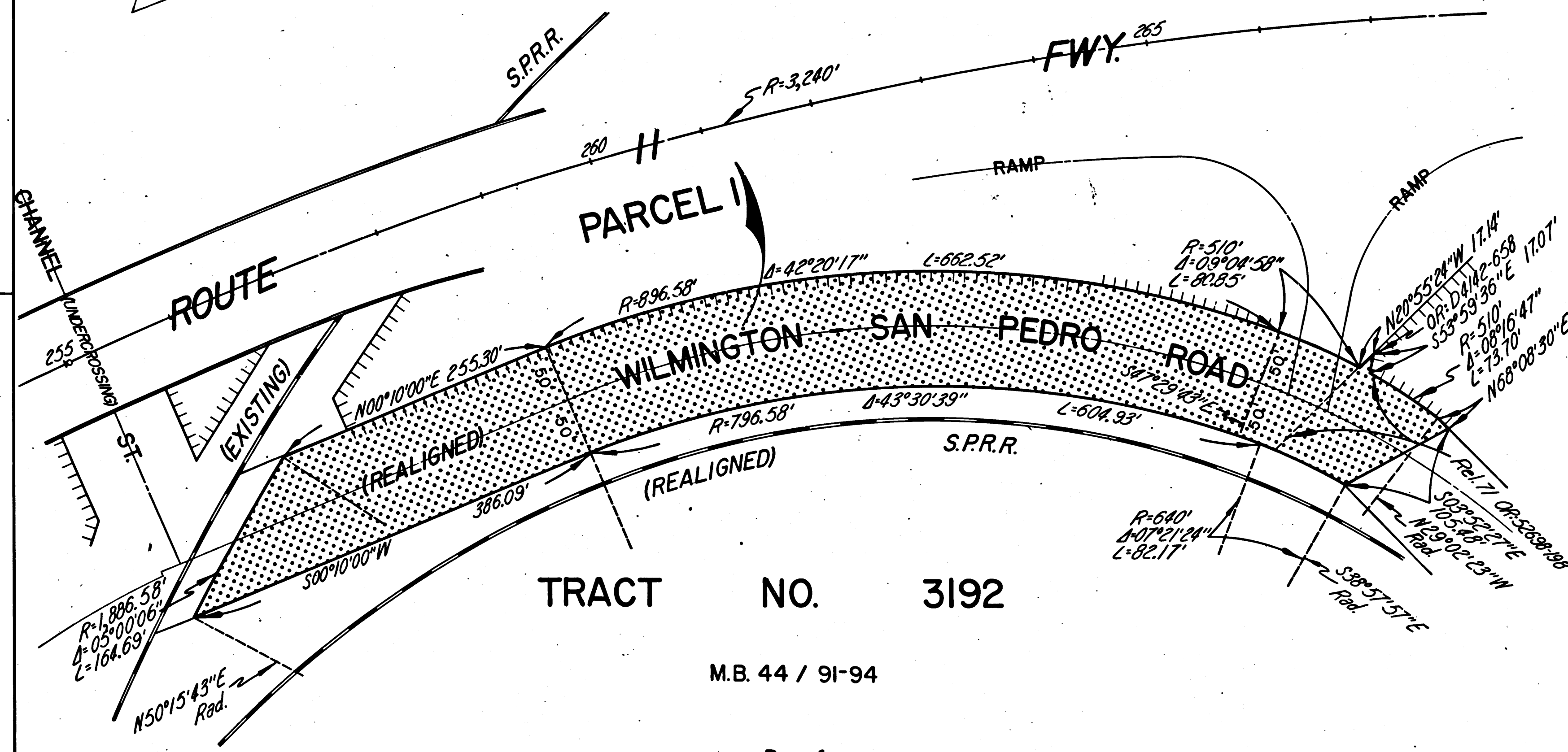
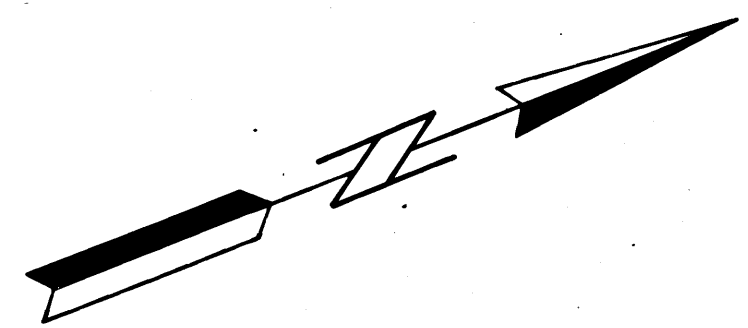
DR'N BY <i>L. Kuehn</i>	R/W MAP NO. <i>F-1301</i>
C'LC BY <i>J. Cotton</i>	CONTRACT NO. <i>002502</i>
C'K'D BY <i>H. Lee</i>	REL-856
REVISED	

DIST	COUNTY	ROUTE	POST MILES	SHEET NO.	TOTAL SHEETS
07	L.A.	11	12.14	2	2

FILED WITH LOS ANGELES COUNTY RECORDER
MAY 22 1973

CITY OF LOS ANGELES

Carl B. Mowley
DISTRICT RIGHT OF WAY ENGINEER
REGISTERED CIVIL ENGINEER NO. 14734
April 9, 1973
DATE



TRACT NO. 3192

M.B. 44 / 91-94

Por. of
LOT 12

STATE OF CALIFORNIA
TRANSPORTATION AGENCY
DEPARTMENT OF PUBLIC WORKS
DIVISION OF HIGHWAYS

PROPOSED RELINQUISHMENT

0 50 100 150 200

AREA TO BE RELINQUISHED SHOWN THUS

ACCESS PROHIBITED

DR'N BY <i>L. Kuehn</i>	R/W MAP NO. <i>F-1341</i>
C'L.C. BY <i>J. Cotton</i>	CONTRACT NO. <i>002504</i>
C'K'D BY <i>H. Lee</i>	REL-856
REVISED	