

DIST	COUNTY	ROUTE	POST MILES	SHEET NO.	TOTAL SHEETS
07	L.A.	210	0.8-2.1	1	5

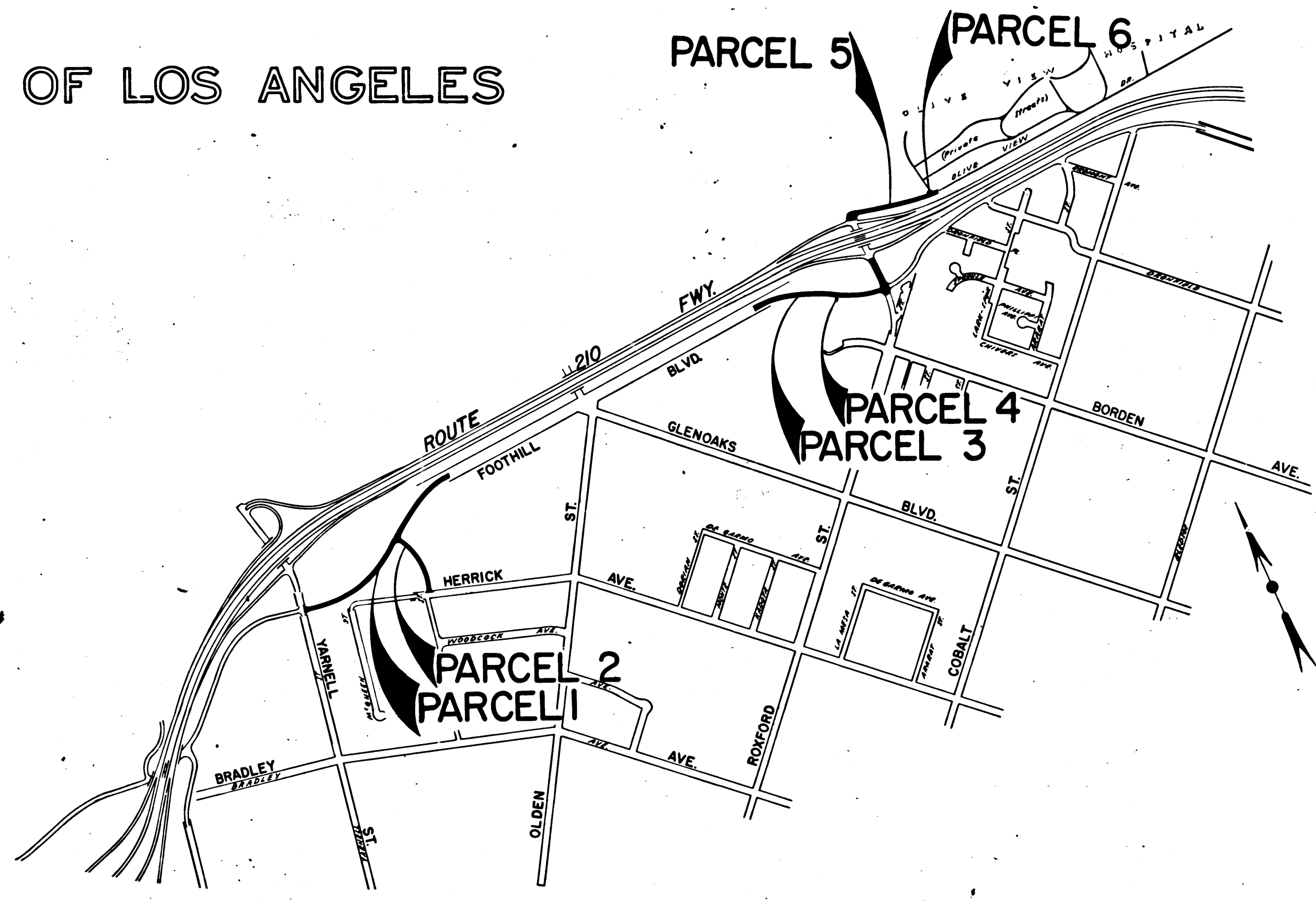
STATE OF CALIFORNIA
 TRANSPORTATION AGENCY
 DEPARTMENT OF PUBLIC WORKS
 DIVISION OF HIGHWAYS

A. D. Simic
 DEPUTY DISTRICT ENGINEER
 REGISTERED CIVIL ENGINEER NO. 7913
 June 1, 1973
 DATE

RIGHT OF WAY MAPS OF
STATE HIGHWAY
 In the City of Los Angeles along Foothill Blvd. (Route 210)
 between Yarnell St. and Roxford St.

2580
 FILED
 AT REQUEST OF
 DEPT. OF PUBLIC WORKS
 SEPT. 4, 1973
 1 PAST 2 PM
 IN BOOK 11
 AT PAGE 20
 OF STATE HIGHWAY MAPS
 LOS ANGELES COUNTY, CALIF.
 COUNTY RECORDER
 Deputy *Free*

CITY OF LOS ANGELES



INTERSTATE
 STATE OF CALIFORNIA
 TRANSPORTATION AGENCY
 DEPARTMENT OF PUBLIC WORKS
 DIVISION OF HIGHWAYS
 PROPOSED RELINQUISHMENT

0 600 1200 1800 2400

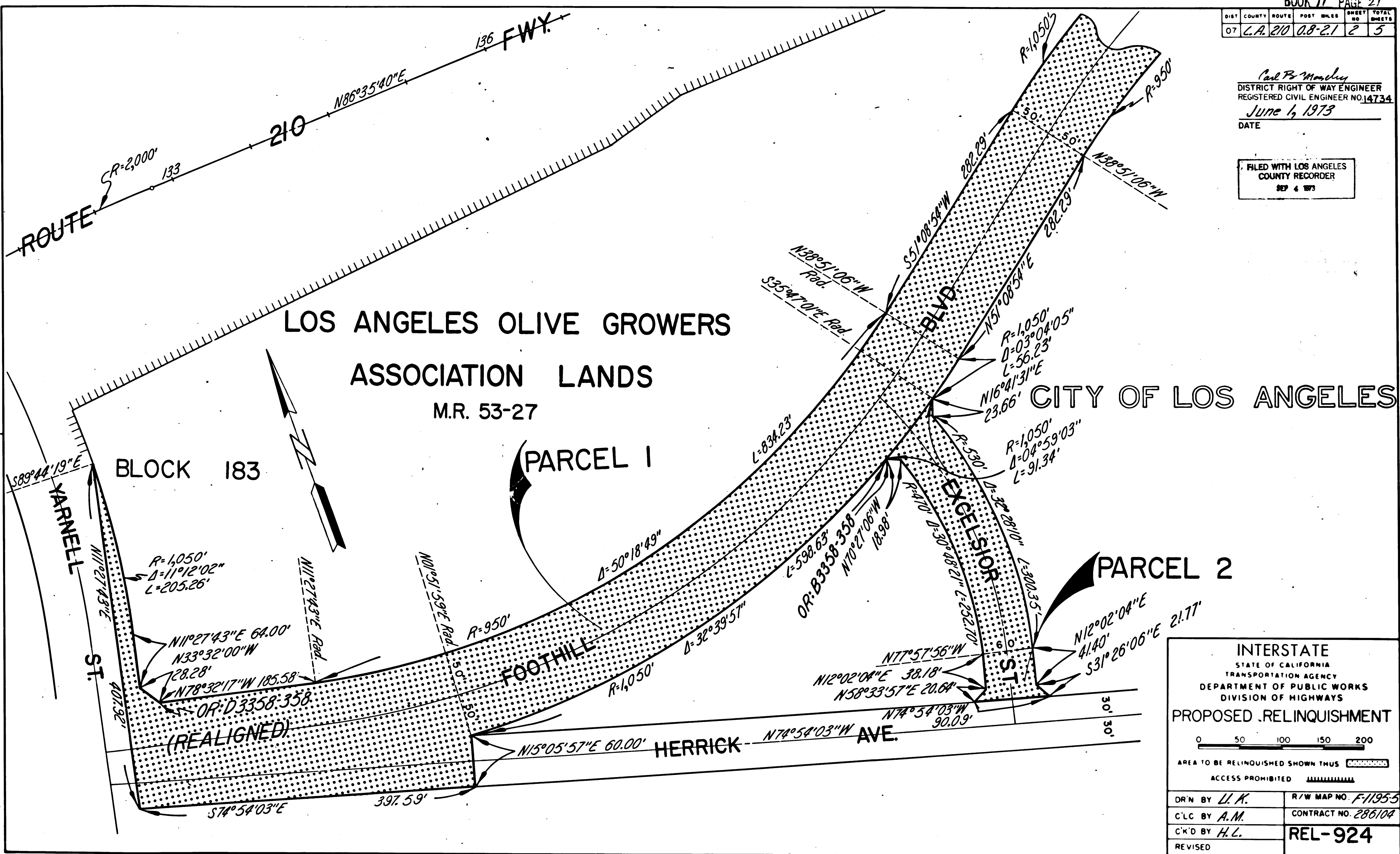
AREA TO BE RELINQUISHED SHOWN THUS

DR'N BY <i>L.W.K.</i>	R/W MAP NO. <i>F-1195</i>
C'LC BY <i>A.M.</i>	CONTRACT NO. <i>286/04</i>
C'K'D BY <i>H.L.</i>	REL-924
REVISED	

DIST	COUNTY	ROUTE	POST MILES	SHEET NO	TOTAL SHEETS
07	L.A.	210	0.8-2.1	2	5

Carl P. Mandley
 DISTRICT RIGHT OF WAY ENGINEER
 REGISTERED CIVIL ENGINEER NO. 14734
 June 1, 1973
 DATE

FILED WITH LOS ANGELES
 COUNTY RECORDER
 SEP 4 1973



INTERSTATE
 STATE OF CALIFORNIA
 TRANSPORTATION AGENCY
 DEPARTMENT OF PUBLIC WORKS
 DIVISION OF HIGHWAYS
 PROPOSED RELINQUISHMENT

0 50 100 150 200

AREA TO BE RELINQUISHED SHOWN THUS

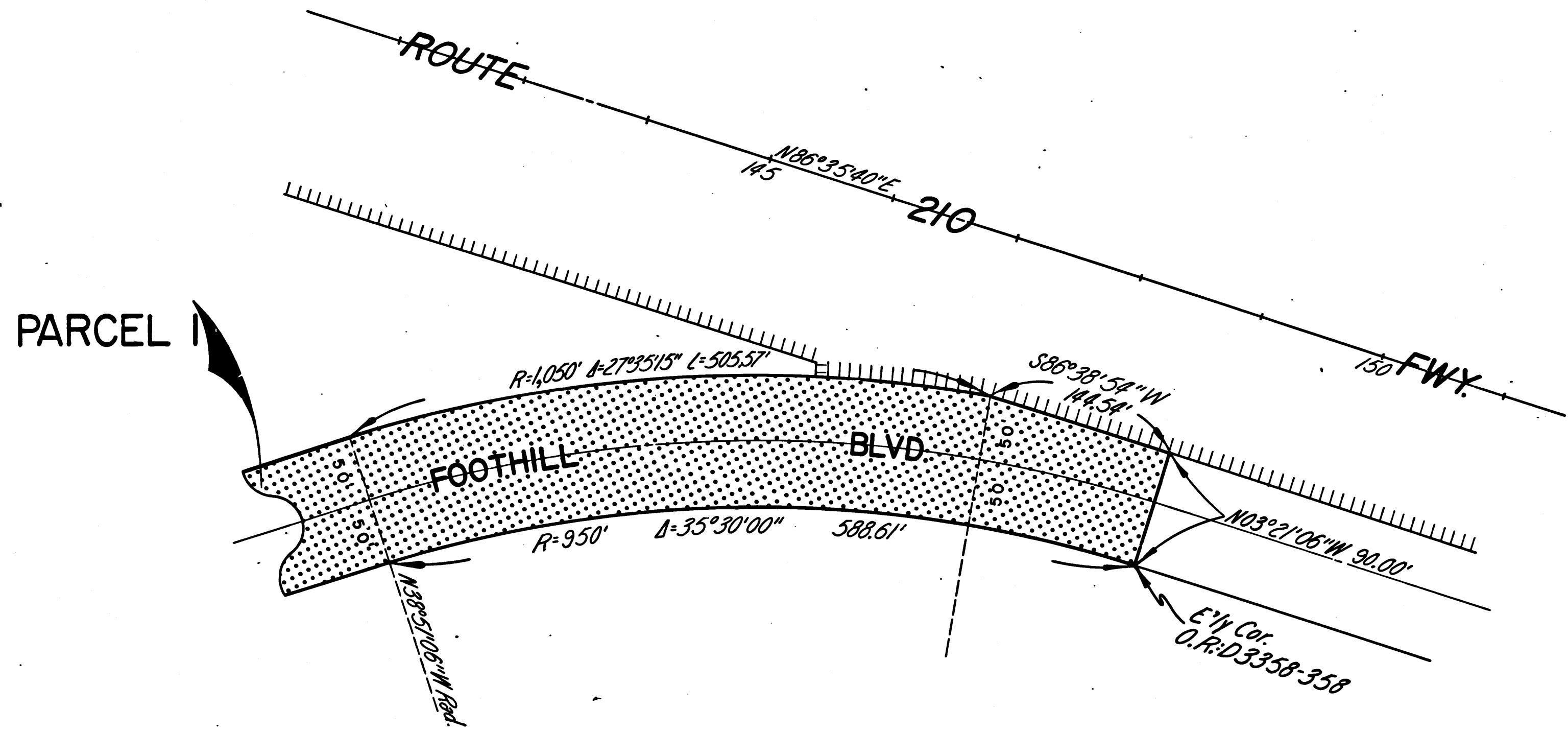
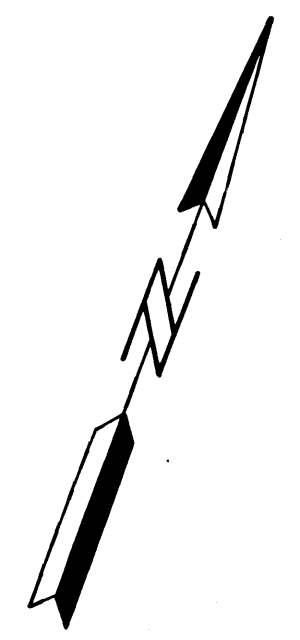
ACCESS PROHIBITED

DR'N BY U.A.	R/W MAP NO. F-1195-5
C'L.C. BY A.M.	CONTRACT NO. 286104
C'K'D BY H.L.	REL-924
REVISED	

DIST	COUNTY	ROUTE	POST MILES	SHEET NO	TOTAL SHEETS
07	L.A.	210	0.8-21	3	5

Carl B. Woodley
 DISTRICT RIGHT OF WAY ENGINEER
 REGISTERED CIVIL ENGINEER NO. 14734
 June 1, 1973
 DATE

FILED WITH LOS ANGELES
 COUNTY RECORDER
 SEP 4 1973



LOS ANGELES OLIVE GROWERS
 ASSOCIATION LANDS

M.R. 53-27

CITY OF LOS ANGELES

BLOCK 183

INTERSTATE
 STATE OF CALIFORNIA
 TRANSPORTATION AGENCY
 DEPARTMENT OF PUBLIC WORKS
 DIVISION OF HIGHWAYS

PROPOSED RELINQUISHMENT

0 50 100 150 200

AREA TO BE RELINQUISHED SHOWN THUS

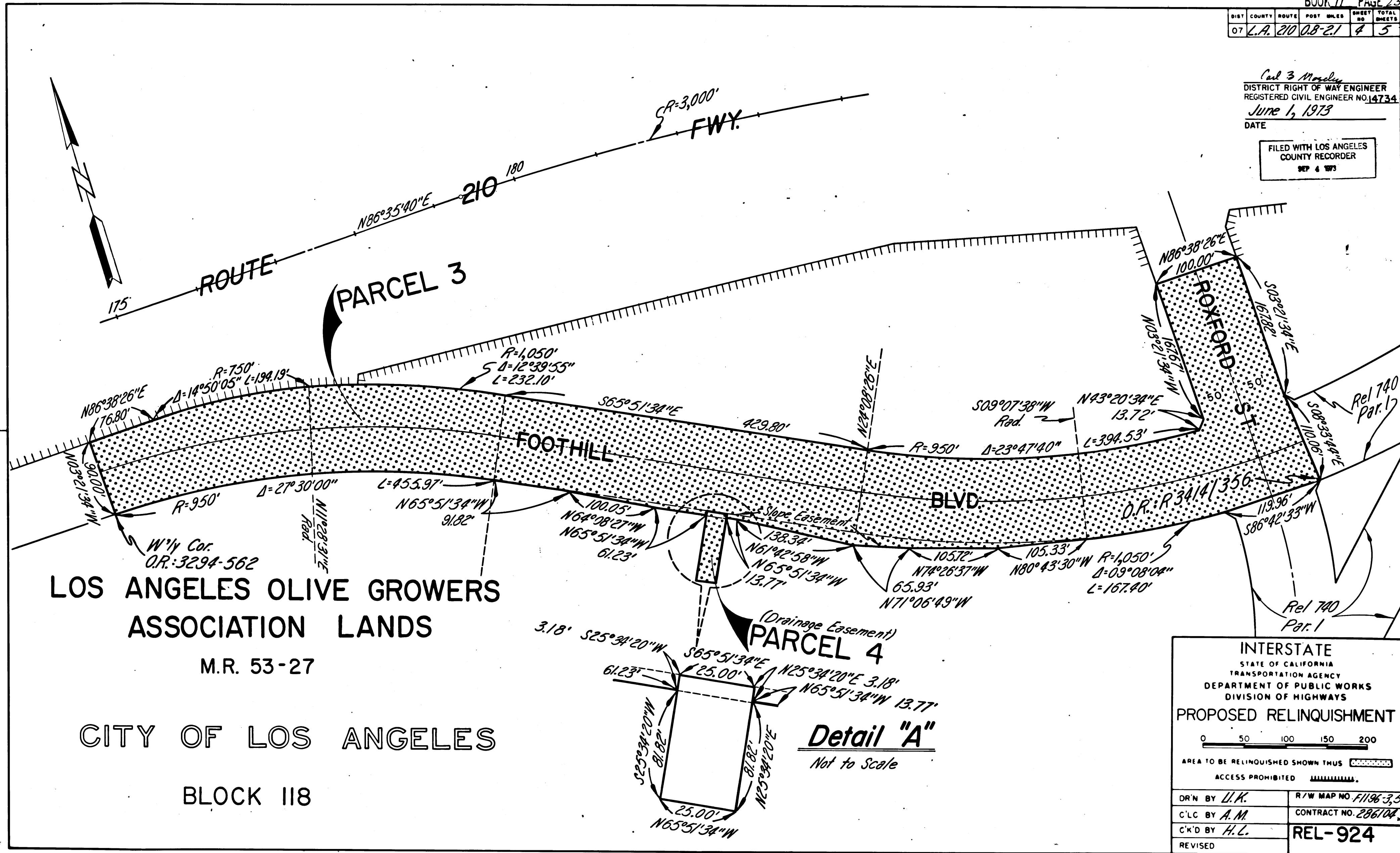
ACCESS PROHIBITED

DR'N BY <i>L.K.</i>	R/W MAP NO. <i>F-1196-1</i>
C'LC BY <i>A.M.</i>	CONTRACT NO. <i>286104</i>
C'K'D BY <i>H.L.</i>	REL-924
REVISED	

DIST	COUNTY	ROUTE	POST MILES	SHEET NO	TOTAL SHEETS
07	L.A.	210	0.8-2.1	4	5

Carl B. Massey
 DISTRICT RIGHT OF WAY ENGINEER
 REGISTERED CIVIL ENGINEER NO. 14734
 June 1, 1973
 DATE

FILED WITH LOS ANGELES
 COUNTY RECORDER
 SEP 4 1973



LOS ANGELES OLIVE GROWERS
 ASSOCIATION LANDS
 M.R. 53-27
 CITY OF LOS ANGELES
 BLOCK 118

INTERSTATE
 STATE OF CALIFORNIA
 TRANSPORTATION AGENCY
 DEPARTMENT OF PUBLIC WORKS
 DIVISION OF HIGHWAYS

PROPOSED RELINQUISHMENT

0 50 100 150 200

AREA TO BE RELINQUISHED SHOWN THUS [Hatched Pattern]

ACCESS PROHIBITED [Dashed Line]

DR'N BY <i>L.K.</i>	R/W MAP NO. <i>F1196-3,5</i>
C'LC BY <i>A.M.</i>	CONTRACT NO. <i>286104</i>
C'K'D BY <i>H.L.</i>	REL-924
REVISED	

DIST	COUNTY	ROUTE	POST MILES	SHEET NO.	TOTAL SHEETS
07	L.A.	210	0.8-2.1	3	5

T.3 N., R.15 W., S.B.M.

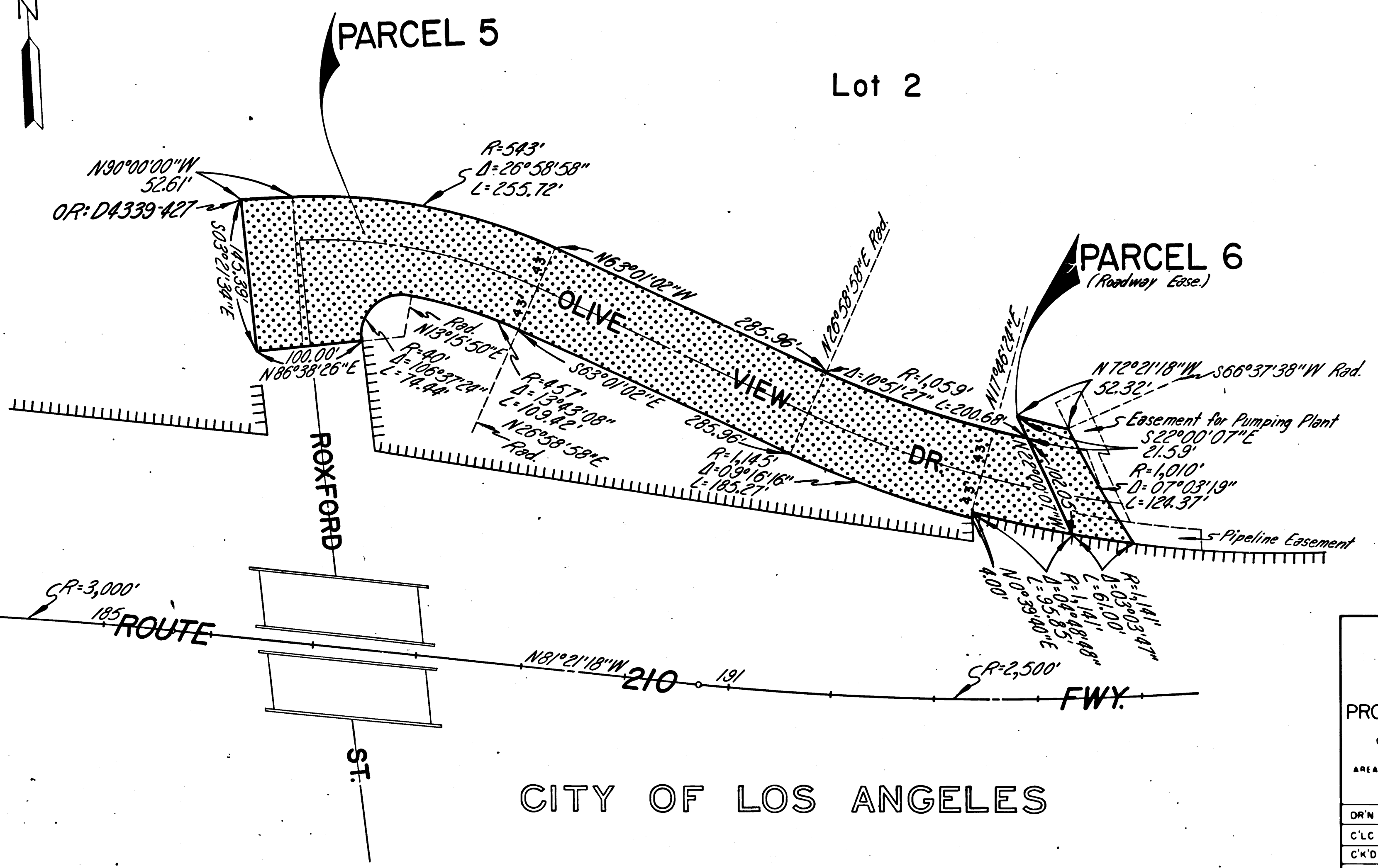
FILED WITH LOS ANGELES COUNTY RECORDER
SEP 4 1973

Sec. 21

Lot 2

Carl B. Mondley
DISTRICT RIGHT OF WAY ENGINEER
REGISTERED CIVIL ENGINEER NO. 14734
June 1, 1973
DATE

Recorded in the Office
of the County Recorder
LOS ANGELES COUNTY
S.H.M.B. No. Pg.



CITY OF LOS ANGELES

INTERSTATE
STATE OF CALIFORNIA
TRANSPORTATION AGENCY
DEPARTMENT OF PUBLIC WORKS
DIVISION OF HIGHWAYS

PROPOSED RELINQUISHMENT

0 50 100 150 200

AREA TO BE RELINQUISHED SHOWN THUS [hatched pattern]

ACCESS PROHIBITED [hatched pattern]

DR'N BY U.K.	R/W MAP NO. F-11964.6
C/LC BY A.M.	CONTRACT NO. 286104
C/K'D BY H.L.	REL-924
REVISED	