

STATE OF CALIFORNIA
 BUSINESS AND TRANSPORTATION AGENCY
 DEPARTMENT OF TRANSPORTATION

RIGHT OF WAY MAPS OF
 STATE HIGHWAY
 In the City of Long Beach along Rte. 405 Fwy.
 at Daisy St. and Pacific Place

BOOK 11 PAGE 96

DIST.	COUNTY	ROUTE	POST MILES	SHEET NO.	TOTAL SHEETS
07	LA	405	7.2	1	2

E. J. Long
 CHIEF, RIGHT OF WAY ENGINEERING AND UTILITIES RELOCATION BRANCH

REGISTERED CIVIL ENGINEER NO. 7949

JANUARY 21, 1974

2909

DATE

FILED
 AT REQUEST OF
 DEPT. OF PUBLIC WORKS
 APR. 16, 1974
 87 MILE
 PAST 1.04

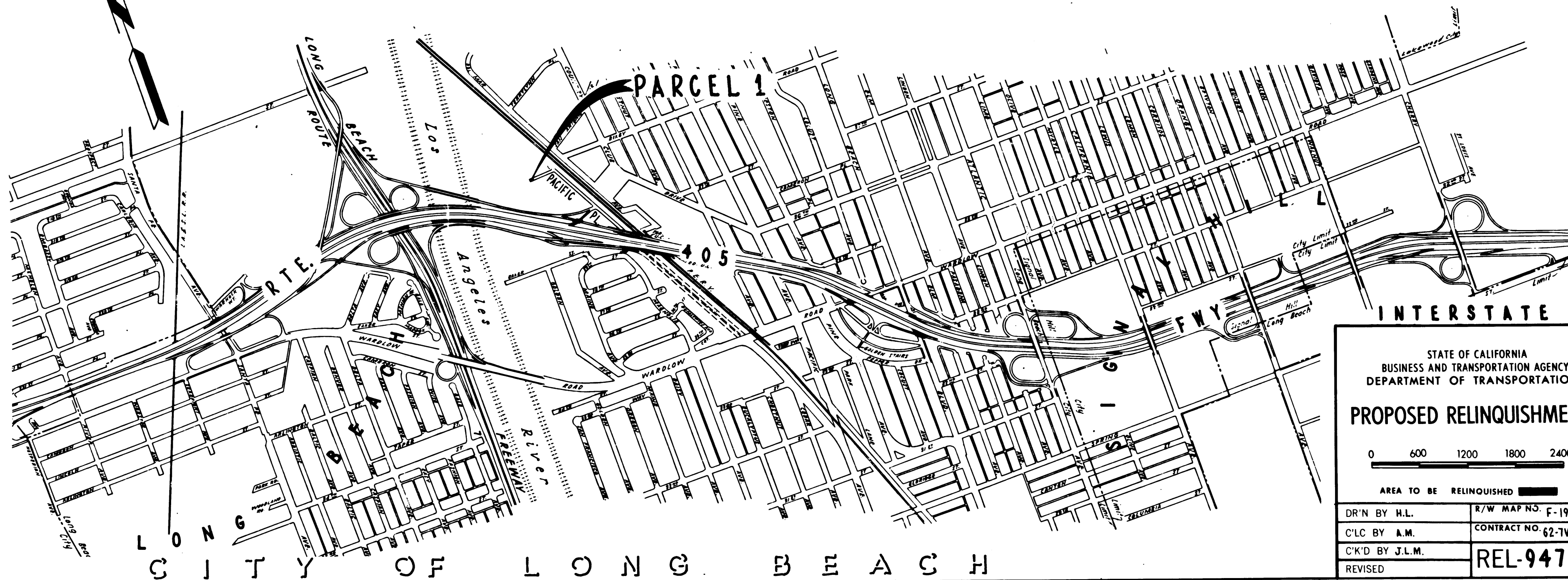
Recorded in the Office
 of the County Recorder

IN BOOK 11
 AT PAGE 96
 OF STATE HIGHWAY MAPS
 LOS ANGELES COUNTY, CALIF.

LOS ANGELES COUNTY

COUNTY ENGINEER
J. L. M.
 DATE
 FREE

S.H.M.B. No. Pg.



STATE OF CALIFORNIA
 BUSINESS AND TRANSPORTATION AGENCY
 DEPARTMENT OF TRANSPORTATION

PROPOSED RELINQUISHMENT

0 600 1200 1800 2400

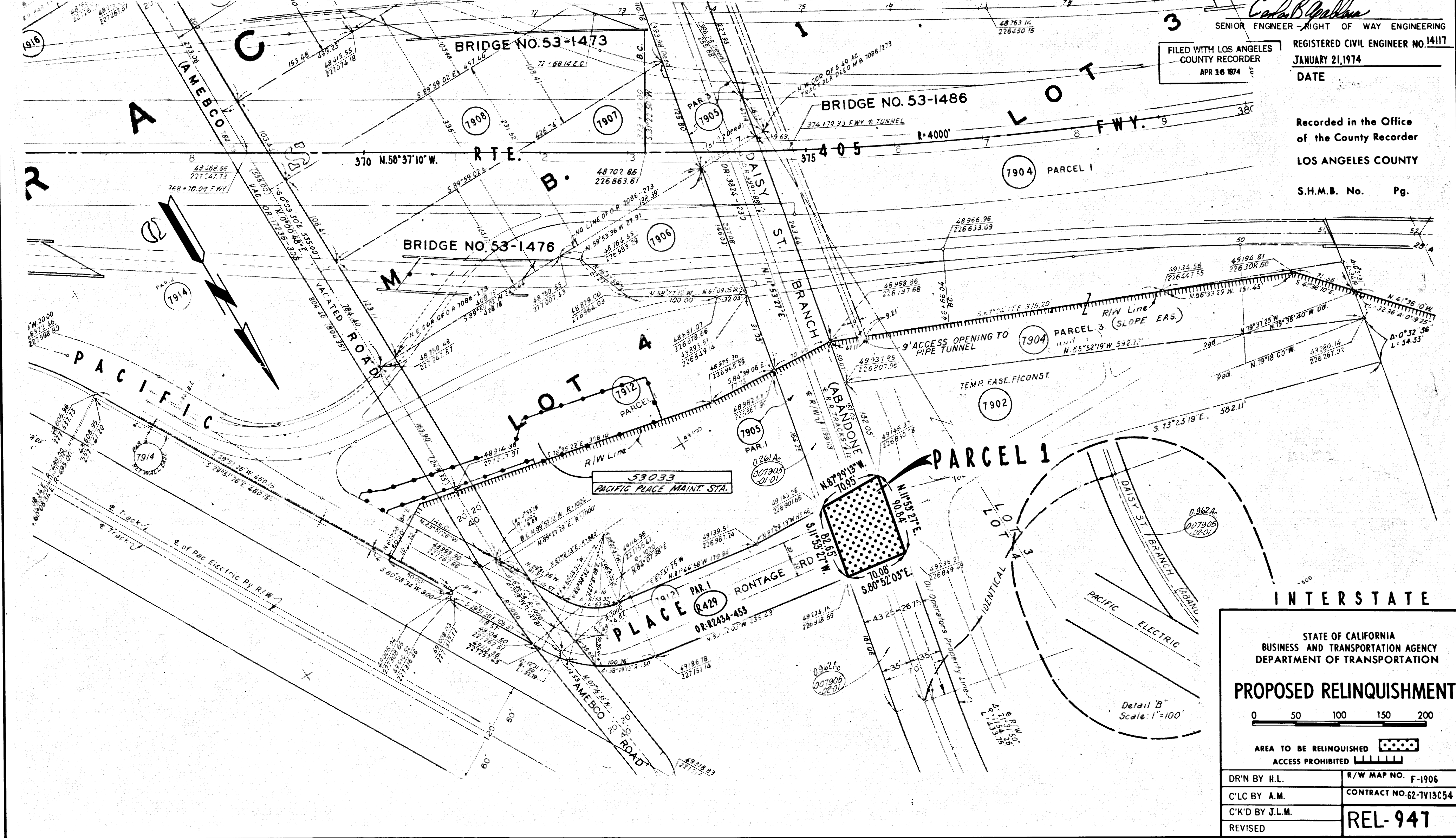
AREA TO BE RELINQUISHED

DR'N BY H.L.	R/W MAP NO. F-1906
C'LC BY A.M.	CONTRACT NO. 62-7V13C54
C'K'D BY J.L.M.	REL-947
REVISED	

12

COUNTY ENGINEER'S COPY

CITY OF LONG BEACH



Carla B. ...
 SENIOR ENGINEER - RIGHT OF WAY ENGINEERING
 REGISTERED CIVIL ENGINEER NO. 14117
 FILED WITH LOS ANGELES COUNTY RECORDER
 APR 16 1974
 DATE

Recorded in the Office of the County Recorder
 LOS ANGELES COUNTY
 S.H.M.B. No. Pg.

INTERSTATE

STATE OF CALIFORNIA
 BUSINESS AND TRANSPORTATION AGENCY
 DEPARTMENT OF TRANSPORTATION

PROPOSED RELINQUISHMENT

0 50 100 150 200

AREA TO BE RELINQUISHED [Pattern]

ACCESS PROHIBITED [Pattern]

DR'N BY H.L.	R/W MAP NO. F-1906
C'LC BY A.M.	CONTRACT NO. 62-TV13C54
C'K'D BY J.L.M.	REL-947
REVISED	

COUNTY ENGINEER'S COPY