

DIST	COUNTY	ROUTE	POST MILES	SHEET NO.	TOTAL SHEETS
07	LA	14	61.6	1	2

STATE OF CALIFORNIA
 BUSINESS AND TRANSPORTATION AGENCY
 DEPARTMENT OF TRANSPORTATION

3237

FILED
 AT REQUEST OF
 DEPT. OF PUBLIC WORKS
 April 23, 1974
 47 MIN PAST 1 PM
 IN BOOK 11
 AT PAGE 98
 OF STATE HIGHWAY MAPS
 LOS ANGELES COUNTY, CALIF.
 COUNTY RECORDER
 BY *[Signature]*
 Deputy
 Free

R.W.F.H.
 ACTING CHIEF, RIGHT OF WAY ENGINEERING AND
 UTILITIES RELOCATION BRANCH

REGISTERED CIVIL ENGINEER NO. 6079

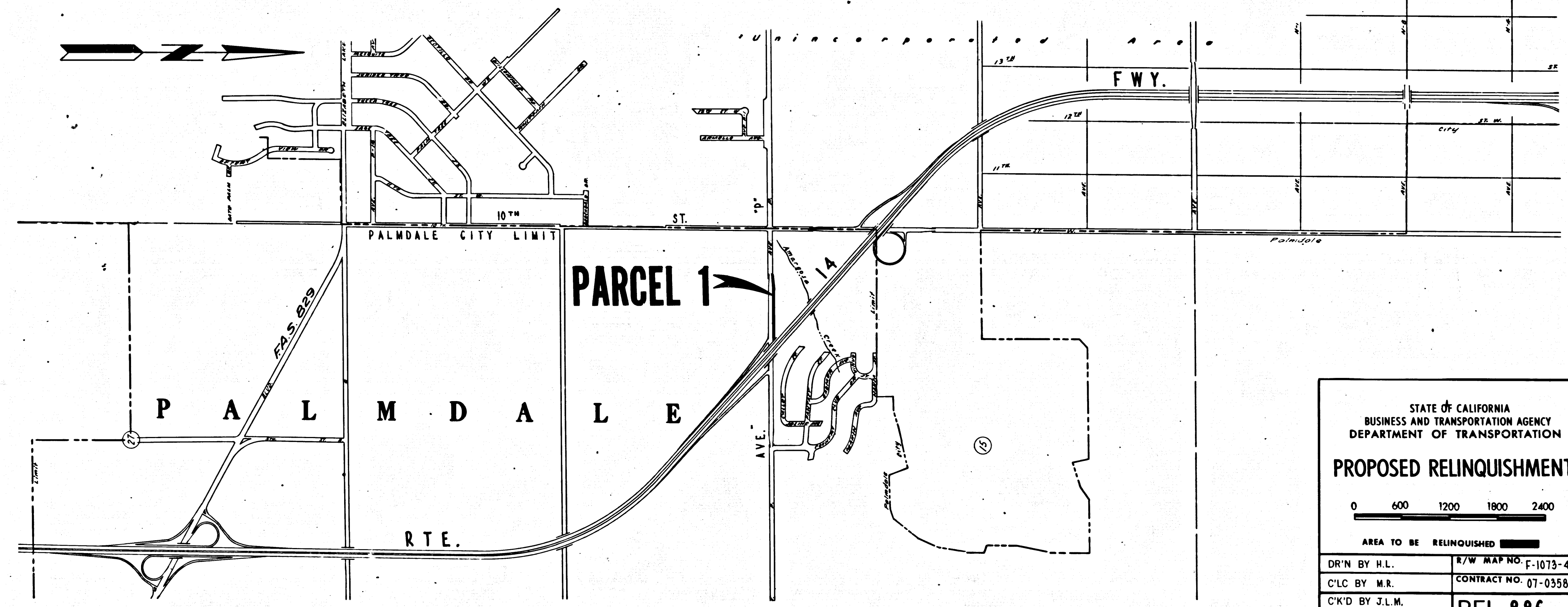
JANUARY 29, 1974
 DATE

Recorded in the Office
 of the County Recorder
 LOS ANGELES COUNTY

S.H.M.B. No. Pg.

RIGHT OF WAY MAPS OF
 STATE HIGHWAY

In the City of Palmdale along Rte. 14 Fwy. at Ave. P.



1:47
 11/98

STATE OF CALIFORNIA
 BUSINESS AND TRANSPORTATION AGENCY
 DEPARTMENT OF TRANSPORTATION

PROPOSED RELINQUISHMENT

0 600 1200 1800 2400

AREA TO BE RELINQUISHED

DR'N BY H.L.	R/W MAP NO. F-1073-4
C'LC BY M.R.	CONTRACT NO. 07-055814
C'K'D BY J.L.M.	REL-886
REVISED	

27

COUNTY ENGINEER'S COPY

CITY OF PALMDALE

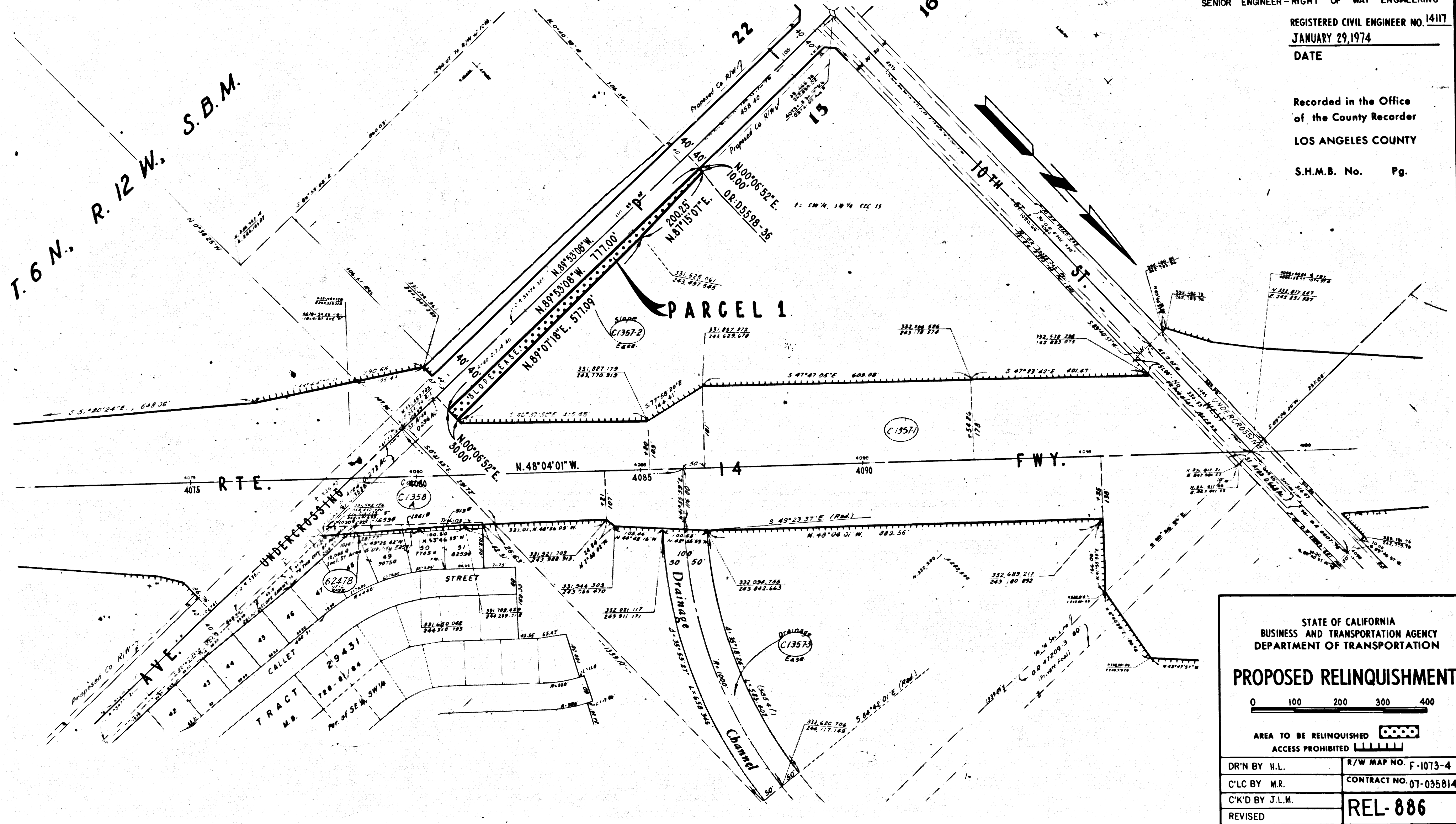
BOOK 11 PAGE 99

DIST	COUNTY	ROUTE	POST MILES	SHEET NO.	TOTAL SHEETS
07	LA	14	61.6	2	2

FILED WITH LOS ANGELES COUNTY RECORDER
APR 24 1974

Charles B. ...
SENIOR ENGINEER - RIGHT OF WAY ENGINEERING
REGISTERED CIVIL ENGINEER NO. 14117
JANUARY 29, 1974
DATE

Recorded in the Office of the County Recorder
LOS ANGELES COUNTY
S.H.M.B. No. Pg.



STATE OF CALIFORNIA
BUSINESS AND TRANSPORTATION AGENCY
DEPARTMENT OF TRANSPORTATION

PROPOSED RELINQUISHMENT

0 100 200 300 400

AREA TO BE RELINQUISHED

ACCESS PROHIBITED

DR'N BY H.L.	R/W MAP NO. F-1073-4
C'LC BY M.R.	CONTRACT NO. 07-035814
C'K'D BY J.L.M.	REL-886
REVISED	

COUNTY ENGINEER'S COPY