

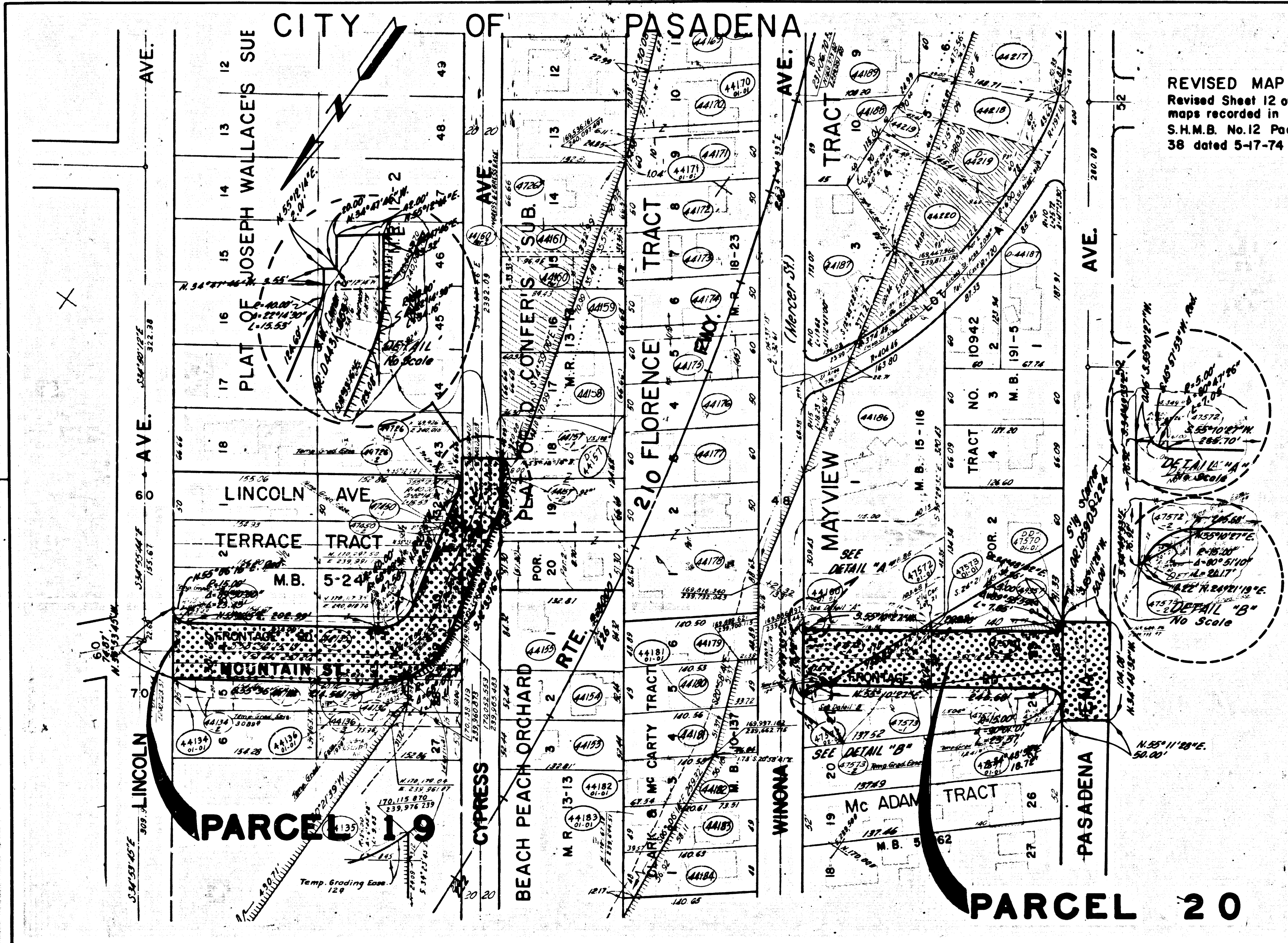
DIST	COUNTY	ROUTE	POST MILES	SHEET NO.	TOTAL SHEETS
07	LA	210	24.2	12	13

*Carl B. Morley*  
 SENIOR ENGINEER - RIGHT OF WAY ENGINEERING  
 REGISTERED CIVIL ENGINEER NO. 4174  
 DATE 12-17-74

3391

FILED  
 AT REQUEST OF  
 DEPT. OF PUBLIC WORKS  
 MAY 30, 1974  
 47 HRS. 1 PM.  
 IN BOOK 11  
 AT PAGE 100  
 OF STATE HIGHWAY MAPS  
 FOR ANGELES COUNTY, CALIF.  
 COUNTY RECORDED  
 BY *Chas. J. [unclear]*  
 Free

REVISED MAP  
 Revised Sheet 12 of  
 maps recorded in  
 S.H.M.B. No. 12 Page  
 38 dated 5-17-74



INTERSTATE

STATE OF CALIFORNIA  
 BUSINESS AND TRANSPORTATION AGENCY  
 DEPARTMENT OF TRANSPORTATION

PROPOSED RELINQUISHMENT



AREA TO BE RELINQUISHED   
 ACCESS PROHIBITED 

DR'N BY	J. G.	R/W MAP NO.	17098-C
CLC BY	J. M.	CONTRACT NO.	07-063734
C'K'D BY	A. M.		
REVISED			REL-868

COUNTY ENGINEER'S COPY