

STATE OF CALIFORNIA
 BUSINESS AND TRANSPORTATION AGENCY
 DEPARTMENT OF TRANSPORTATION

RIGHT OF WAY MAPS OF
 STATE HIGHWAY
 In the City of Glendale along Route 2 Freeway
 Between Fern Lane and Rosecrest Dr.

BOOK 12 PAGE 1

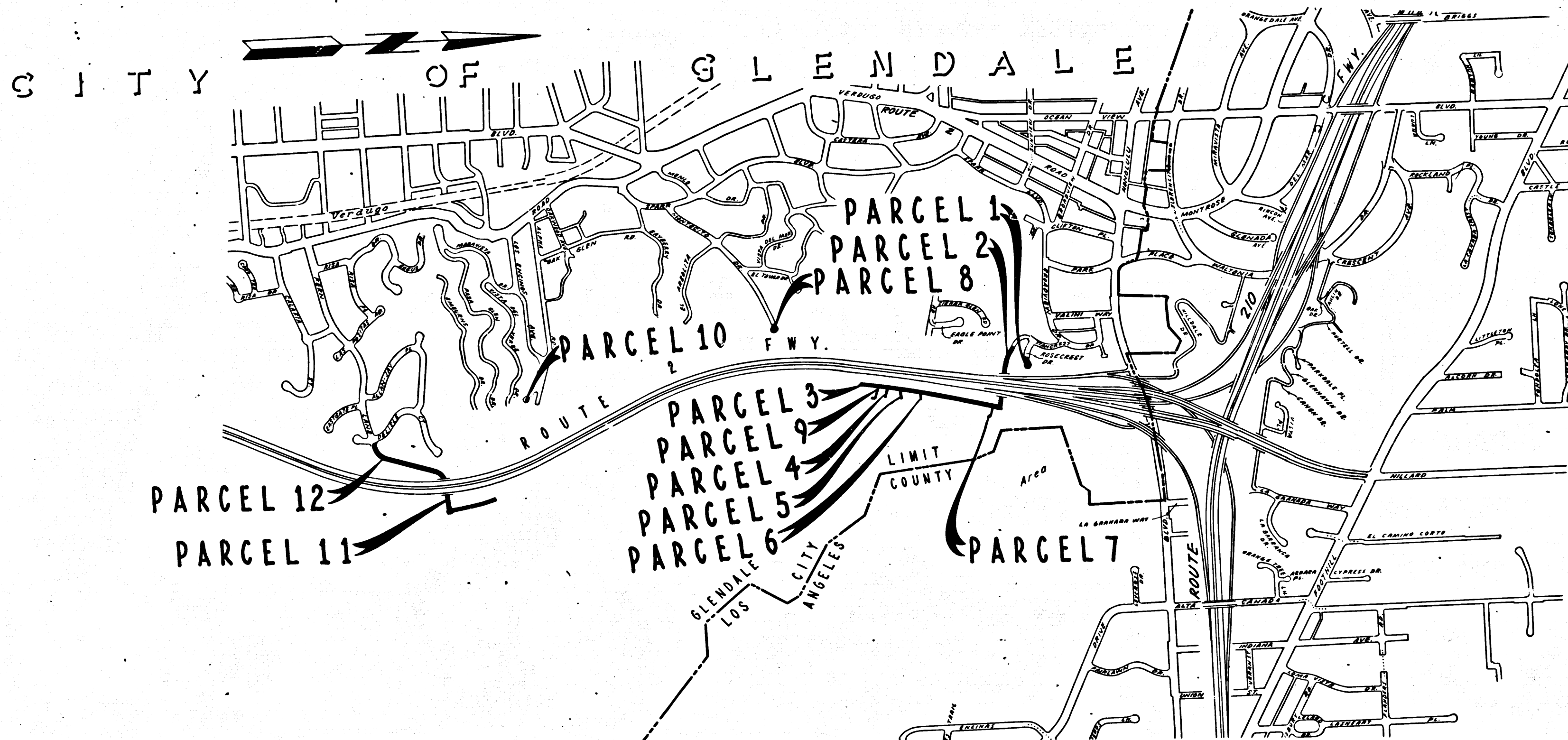
DIST	COUNTY	ROUTE	POST MILES	SHEET NO.	TOTAL SHEETS
07	LA	2	21.7/22.8	1	9

E. K. Jung
 CHIEF, RIGHT OF WAY ENGINEERING AND UTILITIES RELOCATION BRANCH
 REGISTERED CIVIL ENGINEER NO. 7949
 JANUARY 4, 1974
 DATE

Recorded in the Office
 of the County Recorder
 LOS ANGELES COUNTY
 S.H.M.B. No. Pg.

2821

FILED
 AT REQUEST OF
 DEPT. OF PUBLIC WORKS
 MAR. 26, 1974
 11 MIN. 2 PM
 IN BOOK 12
 AT PAGE 1
 OF STATE HIGHWAY MAPS
 LOS ANGELES COUNTY, CALIF.
 COUNTY RECORDER
 BY *Free* Deputy



STATE OF CALIFORNIA
 BUSINESS AND TRANSPORTATION AGENCY
 DEPARTMENT OF TRANSPORTATION

PROPOSED RELINQUISHMENT

0 600 1200 1800 2400

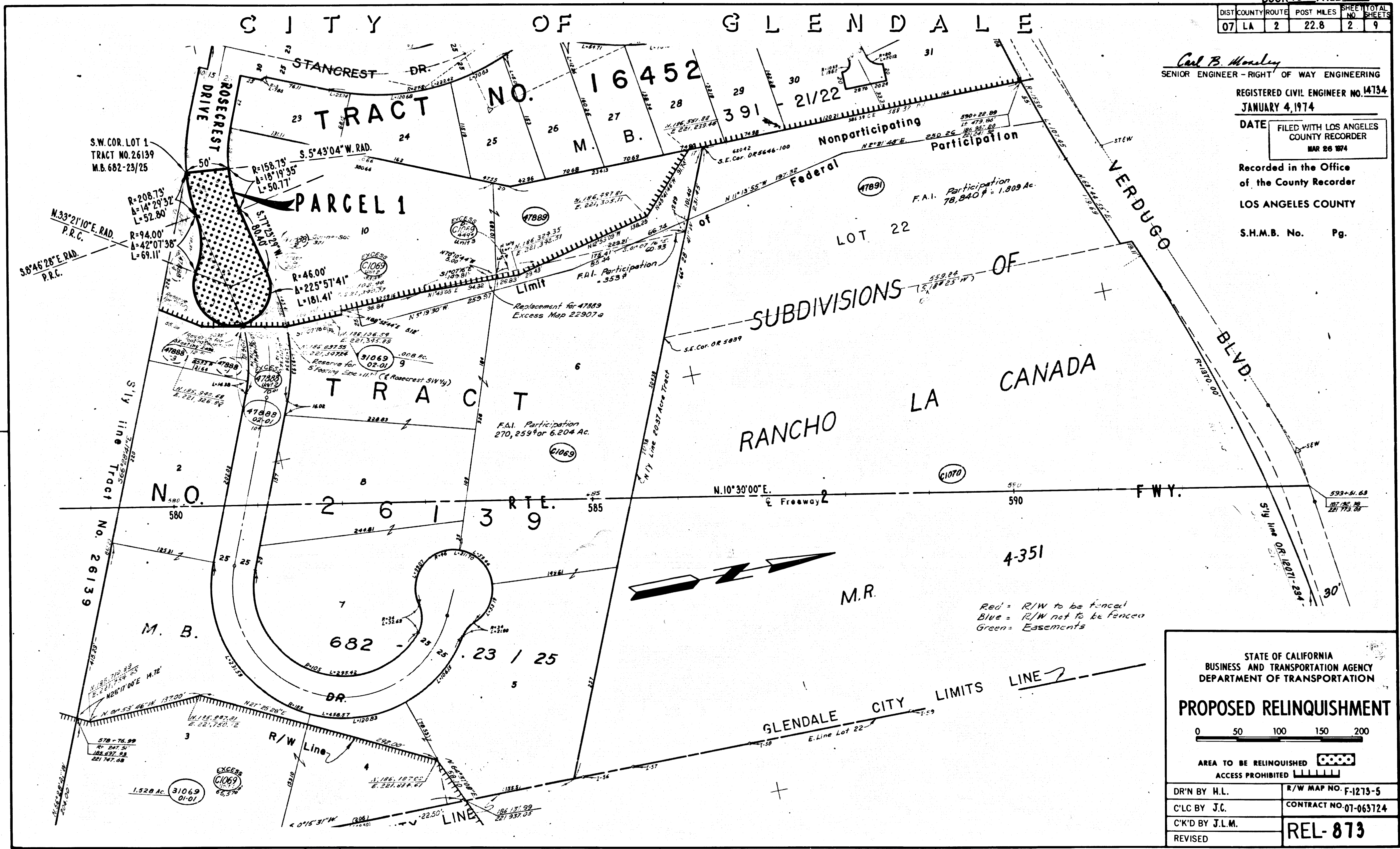
AREA TO BE RELINQUISHED

DR'N BY H.L.	R/W MAP NO. F-1272, F-1273
C'LD BY J.C.	CONTRACT NO. 07-063724
C'KD BY J.L.M.	REL-873
REVISED	

COUNTY ENGINEER'S COPY

DIST	COUNTY	ROUTE	POST MILES	SHEET NO.	TOTAL SHEETS
07	LA	2	22.8	2	9

Carl B. Mosley
 SENIOR ENGINEER - RIGHT OF WAY ENGINEERING
 REGISTERED CIVIL ENGINEER NO. 14754
 JANUARY 4, 1974
 DATE FILED WITH LOS ANGELES COUNTY RECORDER
 MAR 26 1974
 Recorded in the Office of the County Recorder
 LOS ANGELES COUNTY
 S.H.M.B. No. Pg.



STATE OF CALIFORNIA
 BUSINESS AND TRANSPORTATION AGENCY
 DEPARTMENT OF TRANSPORTATION

PROPOSED RELINQUISHMENT

0 50 100 150 200

AREA TO BE RELINQUISHED [Stippled Box]
 ACCESS PROHIBITED [Hatched Box]

DR'N BY H.L.	R/W MAP NO. F-1273-5
C'LC BY J.C.	CONTRACT NO. 07-063724
C'KD BY J.L.M.	REL-873
REVISED	

COUNTY ENGINEER'S COPY

DIST	COUNTY	ROUTE	POST MILES	SHEET NO.	TOTAL SHEETS
07	LA	2	22.7	3	9

Carl B. Wardley
SENIOR ENGINEER - RIGHT OF WAY ENGINEERING

REGISTERED CIVIL ENGINEER NO. 4734

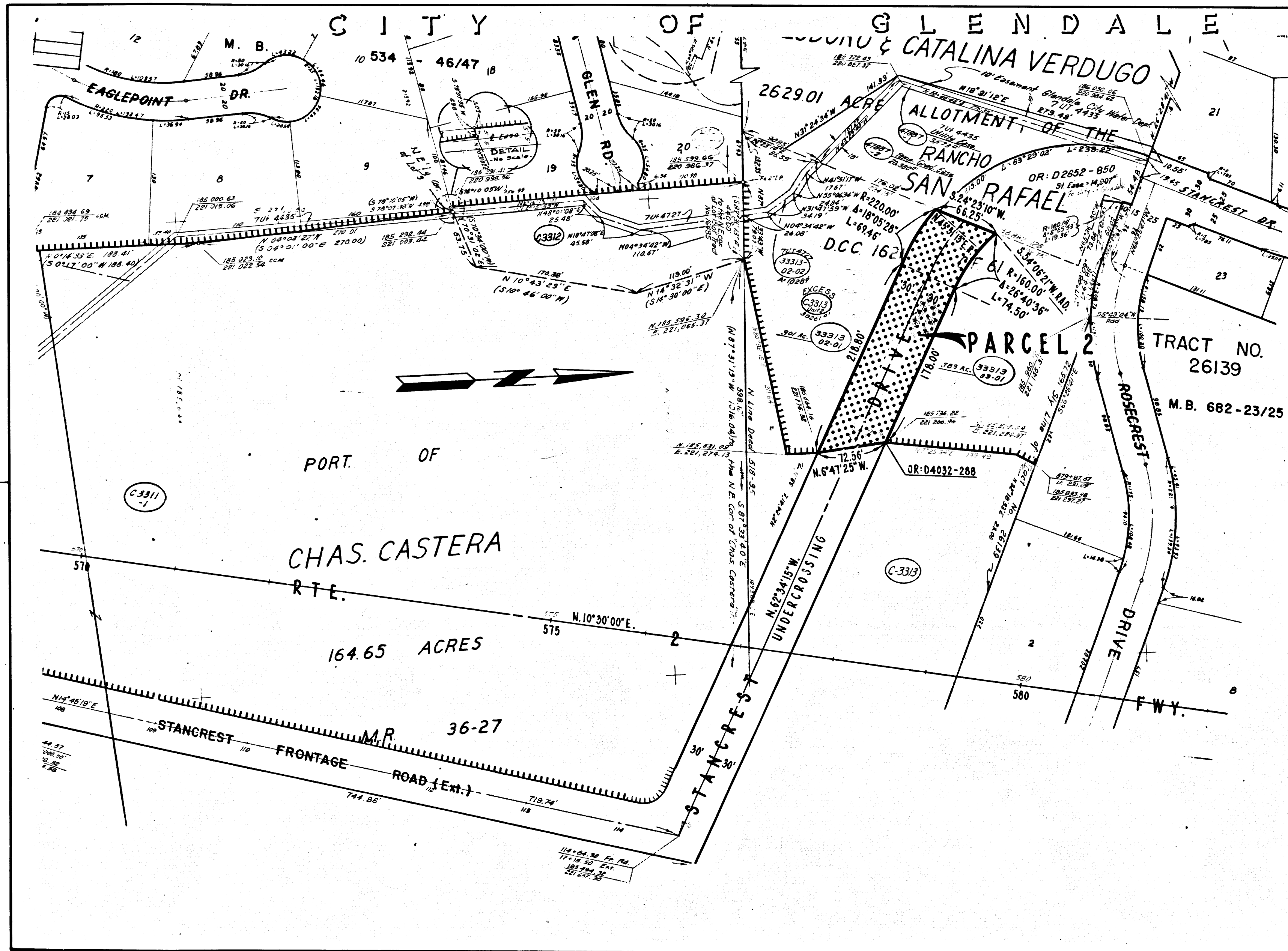
JANUARY 4, 1974

DATE FILED WITH LOS ANGELES COUNTY RECORDER
MAR 26 1974

Recorded in the Office of the County Recorder

LOS ANGELES COUNTY



S.H.M.B. No. Pg.



STATE OF CALIFORNIA
BUSINESS AND TRANSPORTATION AGENCY
DEPARTMENT OF TRANSPORTATION

PROPOSED RELINQUISHMENT

0 50 100 150 200

AREA TO BE RELINQUISHED 
ACCESS PROHIBITED 

DR'N BY H.L.	R/W MAP NO. F-1273-4
C'LC BY J.C.	CONTRACT NO. 07-063724
C'K'D BY J.L.M.	REL-873
REVISED	

COUNTY ENGINEER'S COPY

DIST	COUNTY	ROUTE	POST MILES	SHEET NO.	TOTAL SHEETS
07	LA	2	22.7	4	9

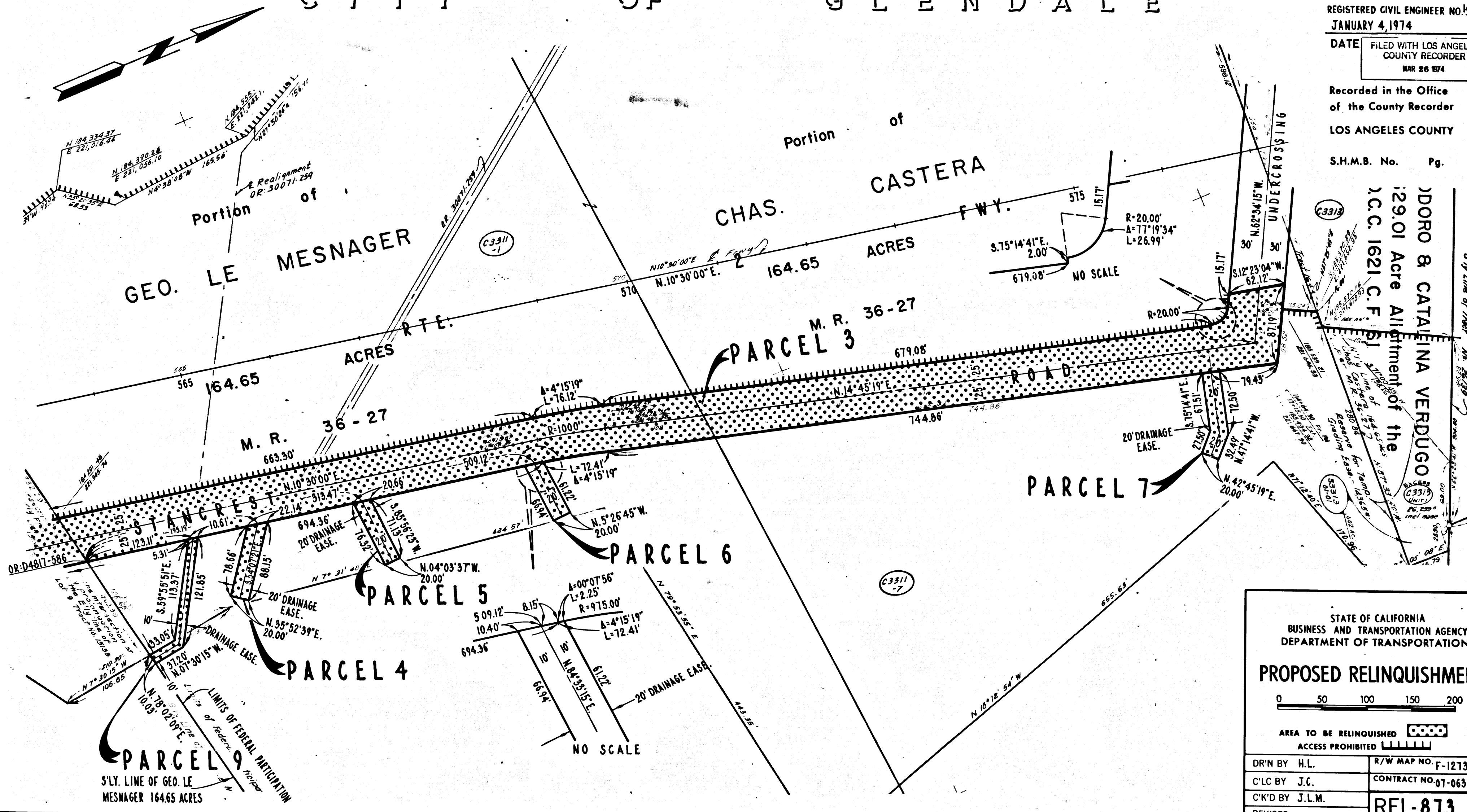
CITY OF GLENDALE

Carl B. Woodley
 SENIOR ENGINEER - RIGHT OF WAY ENGINEERING
 REGISTERED CIVIL ENGINEER NO. 14734
 JANUARY 4, 1974
 DATE FILED WITH LOS ANGELES COUNTY RECORDER
 MAR 26 1974

Recorded in the Office of the County Recorder
 LOS ANGELES COUNTY

S.H.M.B. No. Pg.

DORO & CATALINA VERDUGO
 129.01 Acre Allotment of the
 J.C.C. 1621 C.F. 61



STATE OF CALIFORNIA
 BUSINESS AND TRANSPORTATION AGENCY
 DEPARTMENT OF TRANSPORTATION

PROPOSED RELINQUISHMENT

0 50 100 150 200

AREA TO BE RELINQUISHED

ACCESS PROHIBITED

DR'N BY H.L.	R/W MAP NO. F-1273-3,4
C'LC BY J.C.	CONTRACT NO. 07-063724
C'K'D BY J.L.M.	REL-873
REVISED	

COUNTY ENGINEER'S COPY

DIST	COUNTY	ROUTE	POST MILES	SHEET NO.	TOTAL SHEETS
07	LA	2	22.6	5	9

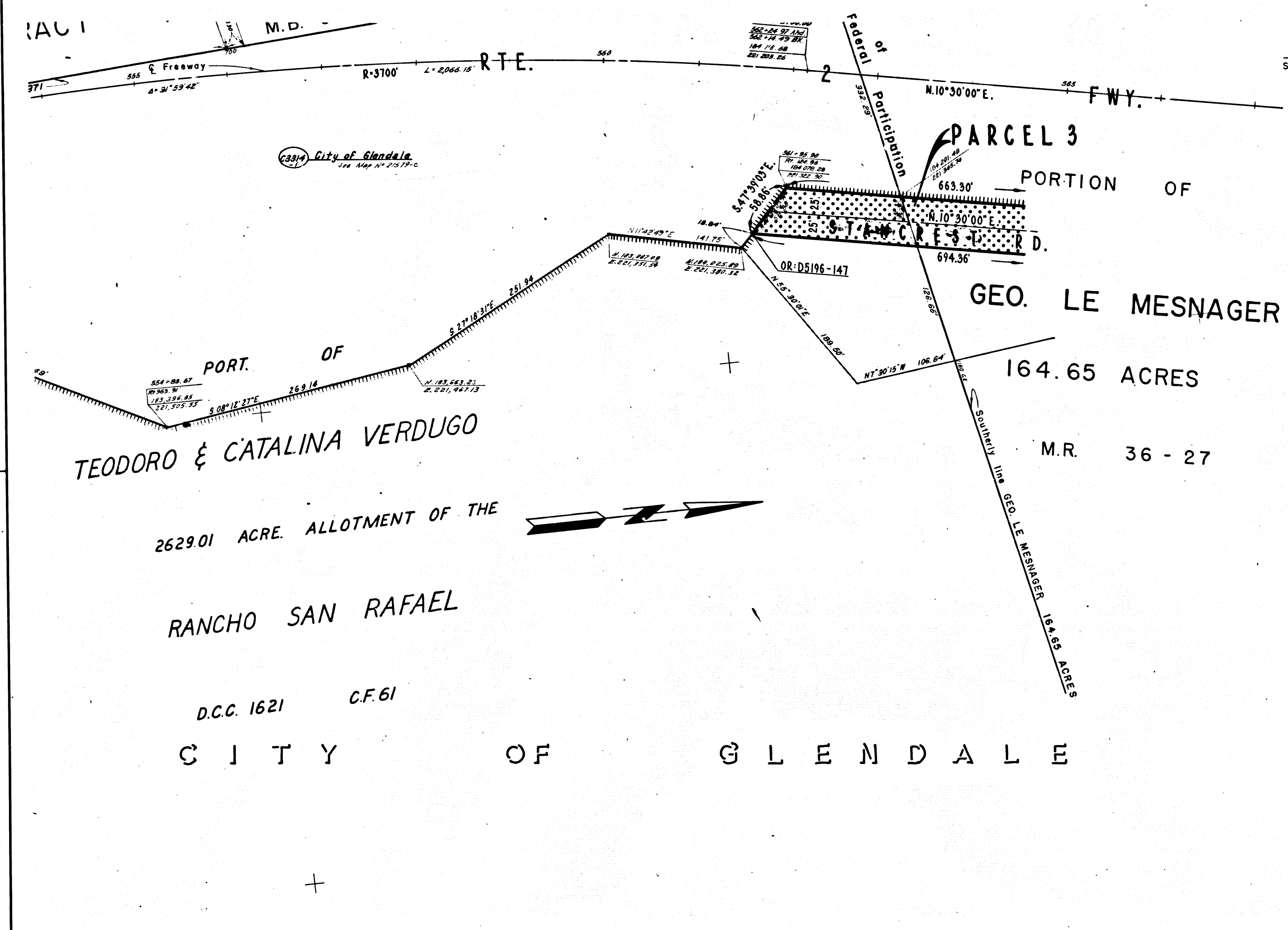
Carl B. Hensley
 SENIOR ENGINEER - RIGHT OF WAY ENGINEERING

REGISTERED CIVIL ENGINEER NO. 14734
 JANUARY 4, 1974

DATE FILED WITH LOS ANGELES COUNTY RECORDER
 MAR 26 1974

Recorded in the Office of the County Recorder
 LOS ANGELES COUNTY

S.H.M.B. No. Pg.



2629.01 ACRE ALLOTMENT OF THE

RANCHO SAN RAFAEL

D.C.C. 1621 C.F. 61

C I T Y O F G L E N D A L E

STATE OF CALIFORNIA
 BUSINESS AND TRANSPORTATION AGENCY
 DEPARTMENT OF TRANSPORTATION

PROPOSED RELINQUISHMENT

0 50 100 150 200

AREA TO BE RELINQUISHED

ACCESS PROHIBITED

DR'N BY H.L.	R/W MAP NO. F-1273-1
C'LC BY J.G.	CONTRACT NO. 07-063724
C'K'D BY J.L.M.	REL-873
REVISED	

COUNTY ENGINEER'S COPY

DIST	COUNTY	ROUTE	POST MILES	SHEET NO.	TOTAL SHEETS
07	LA	2	22.5	6	9

CITY OF GLENDALE

Carl B. Morsley
SENIOR ENGINEER - RIGHT OF WAY ENGINEERING

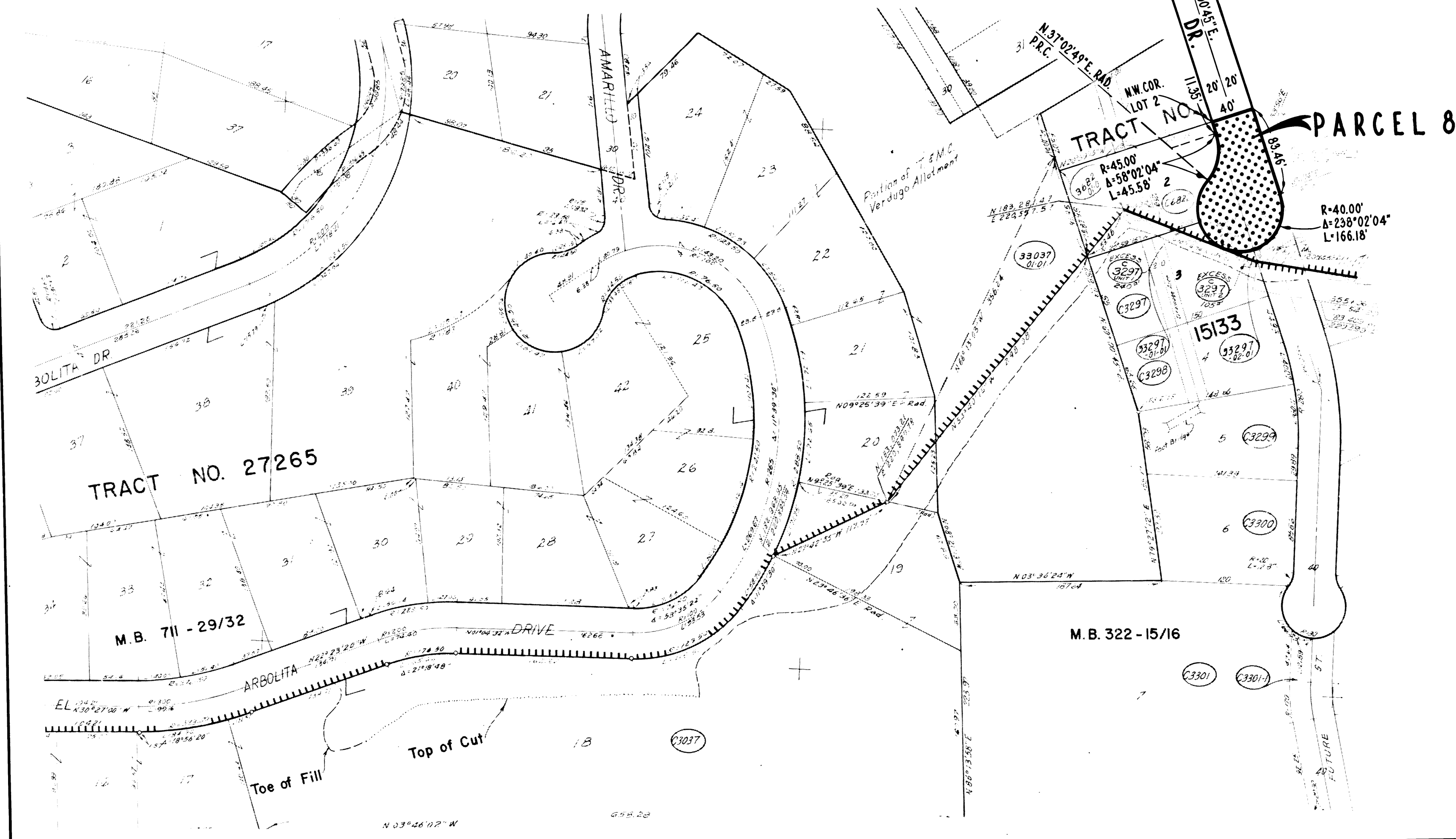
REGISTERED CIVIL ENGINEER NO. 14734
JANUARY 4, 1974

DATE FILED WITH LOS ANGELES COUNTY RECORDER
MAR 26 1974

Recorded in the Office of the County Recorder

LOS ANGELES COUNTY

S.H.M.B. No. Pg.



STATE OF CALIFORNIA
BUSINESS AND TRANSPORTATION AGENCY
DEPARTMENT OF TRANSPORTATION

PROPOSED RELINQUISHMENT

0 50 100 150 200

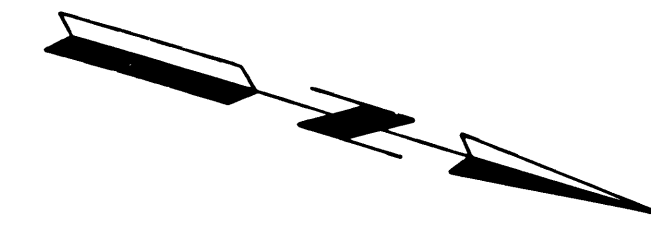
AREA TO BE RELINQUISHED ACCESS PROHIBITED

DR'N BY H.L.	R/W MAP NO. F-1272-9
C'LC BY J.C.	CONTRACT NO. 07-063724
C'K'D BY J.L.M.	REL- 873
REVISED	

COUNTY ENGINEER'S COPY

DIST	COUNTY	ROUTE	POST MILES	SHEET NO.	TOTAL SHEETS
07	LA	2	22.3	7	9

CITY OF GLENDALE



Paul B. Woodley
SENIOR ENGINEER - RIGHT OF WAY ENGINEERING

REGISTERED CIVIL ENGINEER NO. 14734

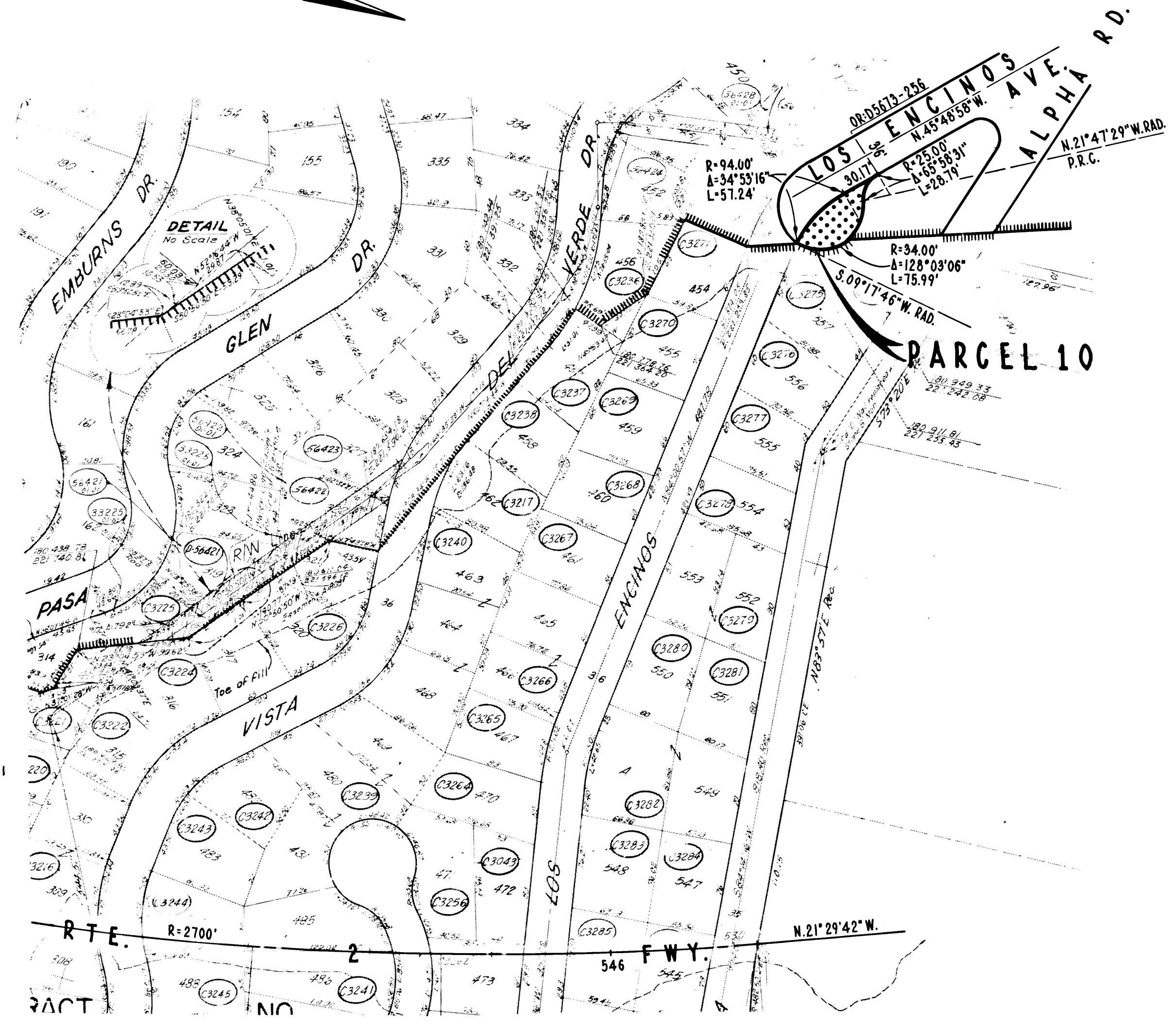
JANUARY 4, 1974

DATE FILED WITH LOS ANGELES COUNTY RECORDER
MAR 26 1974

Recorded in the Office of the County Recorder

LOS ANGELES COUNTY

S.H.M.B. No. Pg.



STATE OF CALIFORNIA
BUSINESS AND TRANSPORTATION AGENCY
DEPARTMENT OF TRANSPORTATION

PROPOSED RELINQUISHMENT

0 50 100 150 200

AREA TO BE RELINQUISHED

ACCESS PROHIBITED

DR'N BY H.L.	R/W MAP NO. F-1272-3
C'LC BY J.C.	CONTRACT NO. 07-063724
C'K'D BY J.L.M.	REL-873
REVISED	

DIST.	COUNTY	ROUTE	POST MILES	SHEET NO.	TOTAL SHEETS
07	LA	2	21.7	8	9

CITY OF GLENDALE

Carl B. Morley
 SENIOR ENGINEER - RIGHT OF WAY ENGINEERING
 REGISTERED CIVIL ENGINEER NO. 14134

JANUARY 4, 1974

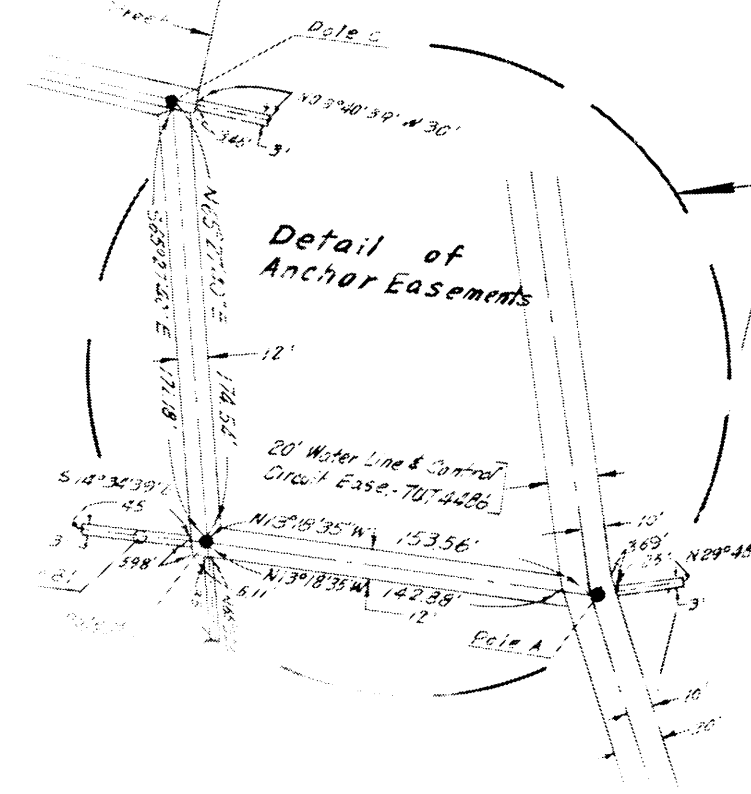
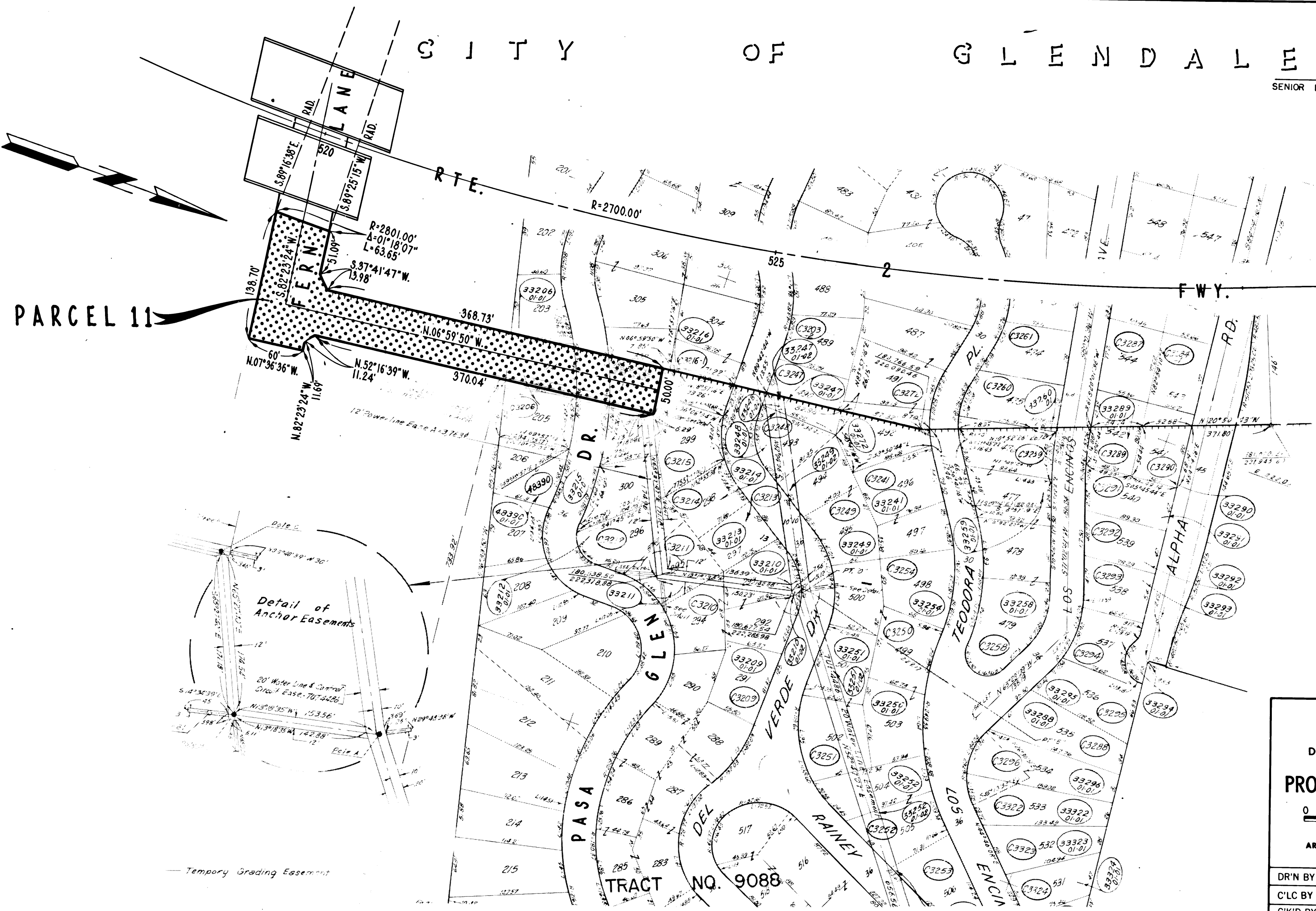
DATE FILED WITH LOS ANGELES COUNTY RECORDER
 MAR 26 1974

Recorded in the Office of the County Recorder

LOS ANGELES COUNTY

S.H.M.B. No. Pg.

PARCEL 11



Temporary Grading Easement

STATE OF CALIFORNIA
 BUSINESS AND TRANSPORTATION AGENCY
 DEPARTMENT OF TRANSPORTATION

PROPOSED RELINQUISHMENT

0 50 100 150 200

AREA TO BE RELINQUISHED

ACCESS PROHIBITED

DR'N BY H.L.	R/W MAP NO. F-1272-2, F-1272-4
C'LC BY J.C.	CONTRACT NO. 07-063724
C'K'D BY J.L.M.	REL-873
REVISED	

COUNTY ENGINEER'S COPY

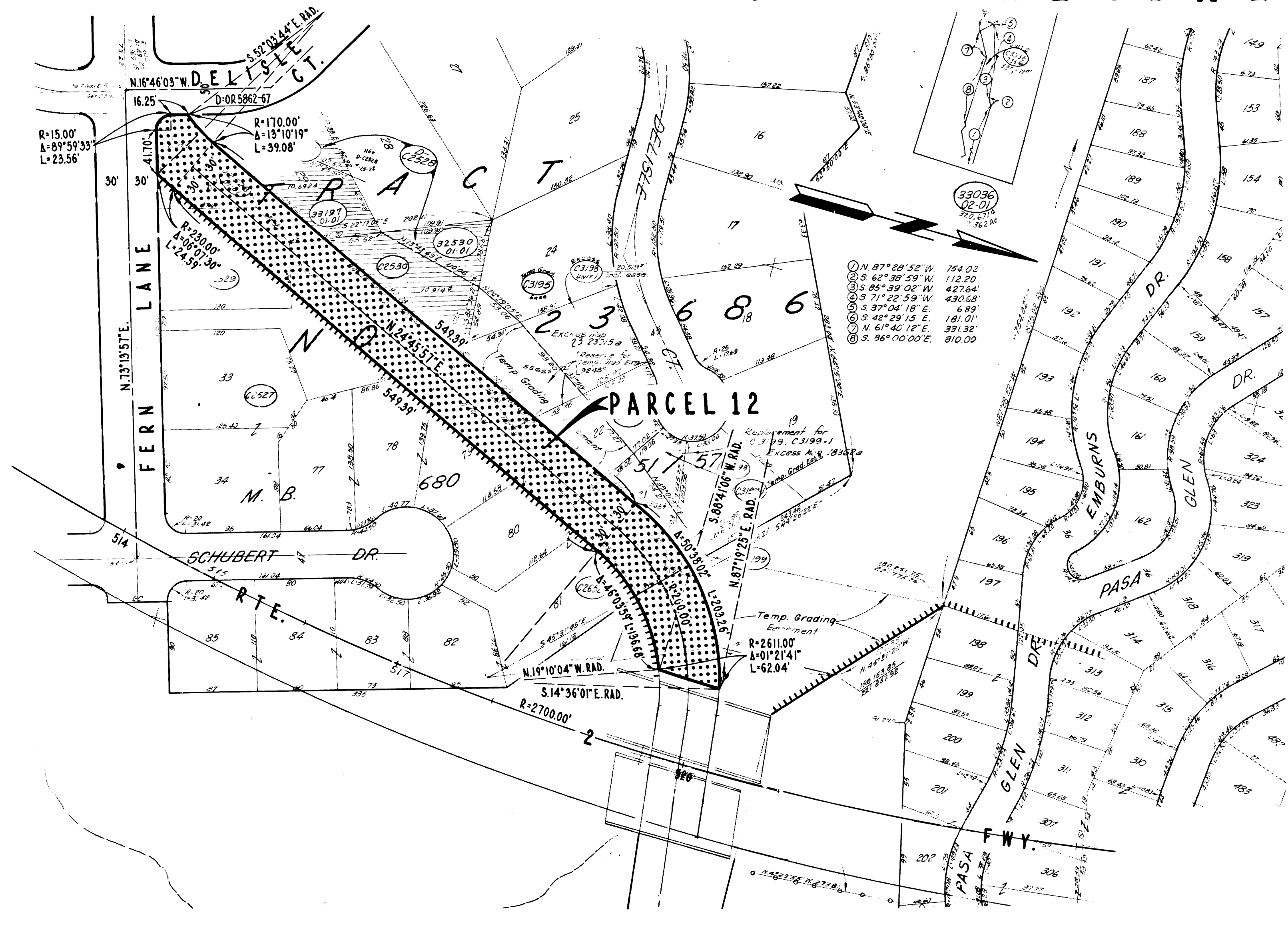
DIST	COUNTY	ROUTE	POST MILES	SHEET NO.	TOTAL SHEETS
07	LA	2	21.7	9	9

CITY OF GLENDALE

Carl B. Mondley
 SENIOR ENGINEER - RIGHT OF WAY ENGINEERING
 REGISTERED CIVIL ENGINEER NO. 14734
 JANUARY 4, 1974
 DATE FILED WITH LOS ANGELES COUNTY RECORDER
 MAR 26 1974

Recorded in the Office
 of the County Recorder
 LOS ANGELES COUNTY

S.H.M.B. No. Pg.



STATE OF CALIFORNIA
 BUSINESS AND TRANSPORTATION AGENCY
 DEPARTMENT OF TRANSPORTATION

PROPOSED RELINQUISHMENT

0 50 100 150 200

AREA TO BE RELINQUISHED

ACCESS PROHIBITED

DR'N BY H.L.	R/W MAP NO. F-1272-1
C'LC BY J.C.	CONTRACT NO. 07-063724
C'K'D BY J.L.M.	REL-873
REVISED	