

DIST	COUNTY	ROUTE	POST MILES	SHEET NO.	TOTAL SHEETS
07	LA	60	6.3	1	2

STATE OF CALIFORNIA  
 BUSINESS AND TRANSPORTATION AGENCY  
 DEPARTMENT OF TRANSPORTATION

4219

*R.W. Walker*  
 ACTING CHIEF RIGHT OF WAY ENGINEERING AND UTILITIES RELOCATION BRANCH  
 REGISTERED CIVIL ENGINEER NO. 6079

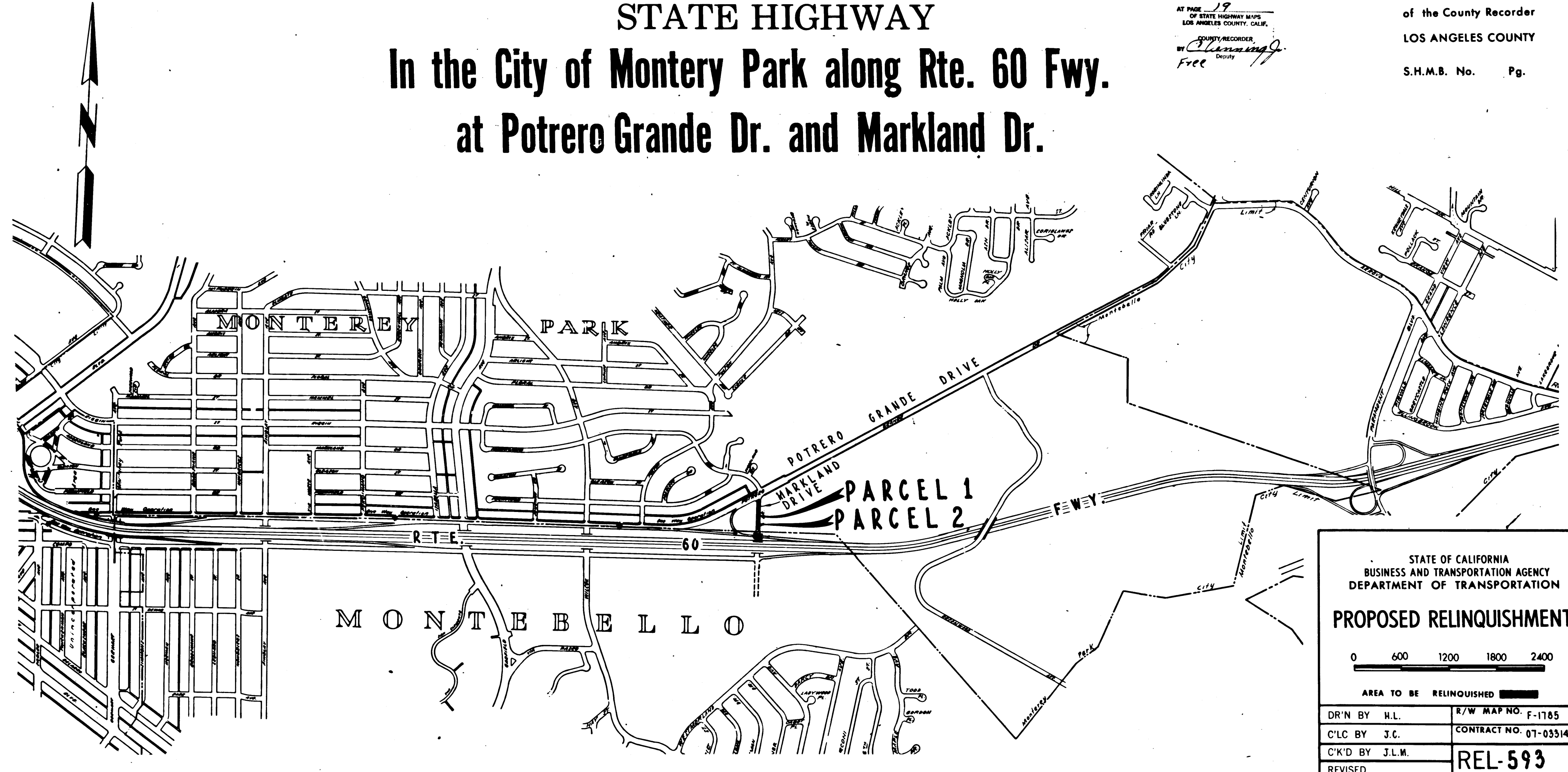
FEBRUARY 8, 1974  
 DATE

RIGHT OF WAY MAPS OF  
 STATE HIGHWAY

In the City of Monterey Park along Rte. 60 Fwy.  
 at Potrero Grande Dr. and Markland Dr.

FILED  
 AT REQUEST OF  
 DEPT. OF PUBLIC WORKS  
 MAY 1, 1974  
 21 MIN. 2 PM  
 IN BOOK 12  
 AT PAGE 19  
 OF STATE HIGHWAY MAPS  
 LOS ANGELES COUNTY, CALIF.  
 COUNTY RECORDER  
 BY *Channing*  
 Free Deputy

Recorded in the Office  
 of the County Recorder  
 LOS ANGELES COUNTY  
 S.H.M.B. No. Pg.



STATE OF CALIFORNIA  
 BUSINESS AND TRANSPORTATION AGENCY  
 DEPARTMENT OF TRANSPORTATION

**PROPOSED RELINQUISHMENT**

0 600 1200 1800 2400

AREA TO BE RELINQUISHED

DR'N BY H.L.	R/W MAP NO. F-1785
C'LC BY J.C.	CONTRACT NO. 07-033141
C'K'D BY J.L.M.	<b>REL-593</b>
REVISED	

COUNTY ENGINEER'S COPY

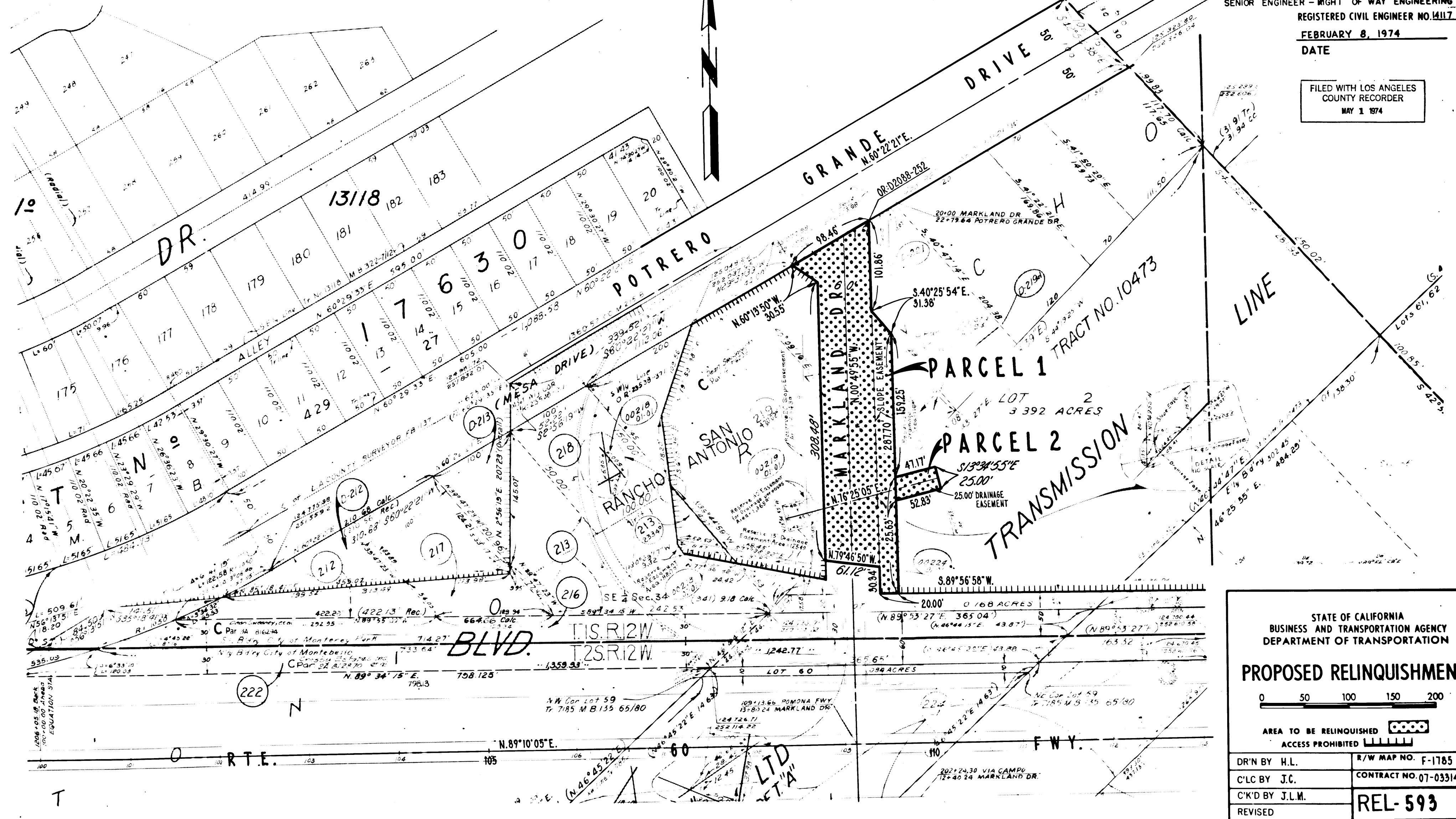
DIST	COUNTY	ROUTE	POST MILES	SHEET NO.	TOTAL SHEETS
07	LA	60	6.3	2	2

CITY OF MONTEREY PARK

*Calvin B. Appell*  
 SENIOR ENGINEER - RIGHT OF WAY ENGINEERING  
 REGISTERED CIVIL ENGINEER NO. 14117

FEBRUARY 8, 1974  
 DATE



FILED WITH LOS ANGELES  
 COUNTY RECORDER  
 MAY 1 1974



STATE OF CALIFORNIA  
 BUSINESS AND TRANSPORTATION AGENCY  
 DEPARTMENT OF TRANSPORTATION

**PROPOSED RELINQUISHMENT**

0 50 100 150 200

AREA TO BE RELINQUISHED   
 ACCESS PROHIBITED 

DR'N BY H.L.	R/W MAP NO. F-1785
C'LC BY J.C.	CONTRACT NO. 07-033141
C'KD BY J.L.M.	REL-593
REVISED	