

STATE OF CALIFORNIA
 BUSINESS AND TRANSPORTATION AGENCY
 DEPARTMENT OF TRANSPORTATION

RIGHT OF WAY MAPS OF
 STATE HIGHWAY
 In the County of Los Angeles along Rte 60 Fwy. at Fernfield Drive.

BOOK 12 PAGE 21

DIST	COUNTY	ROUTE	POST MILES	SHEET NO.	TOTAL SHEETS
07	LA	60	4.4	1	2

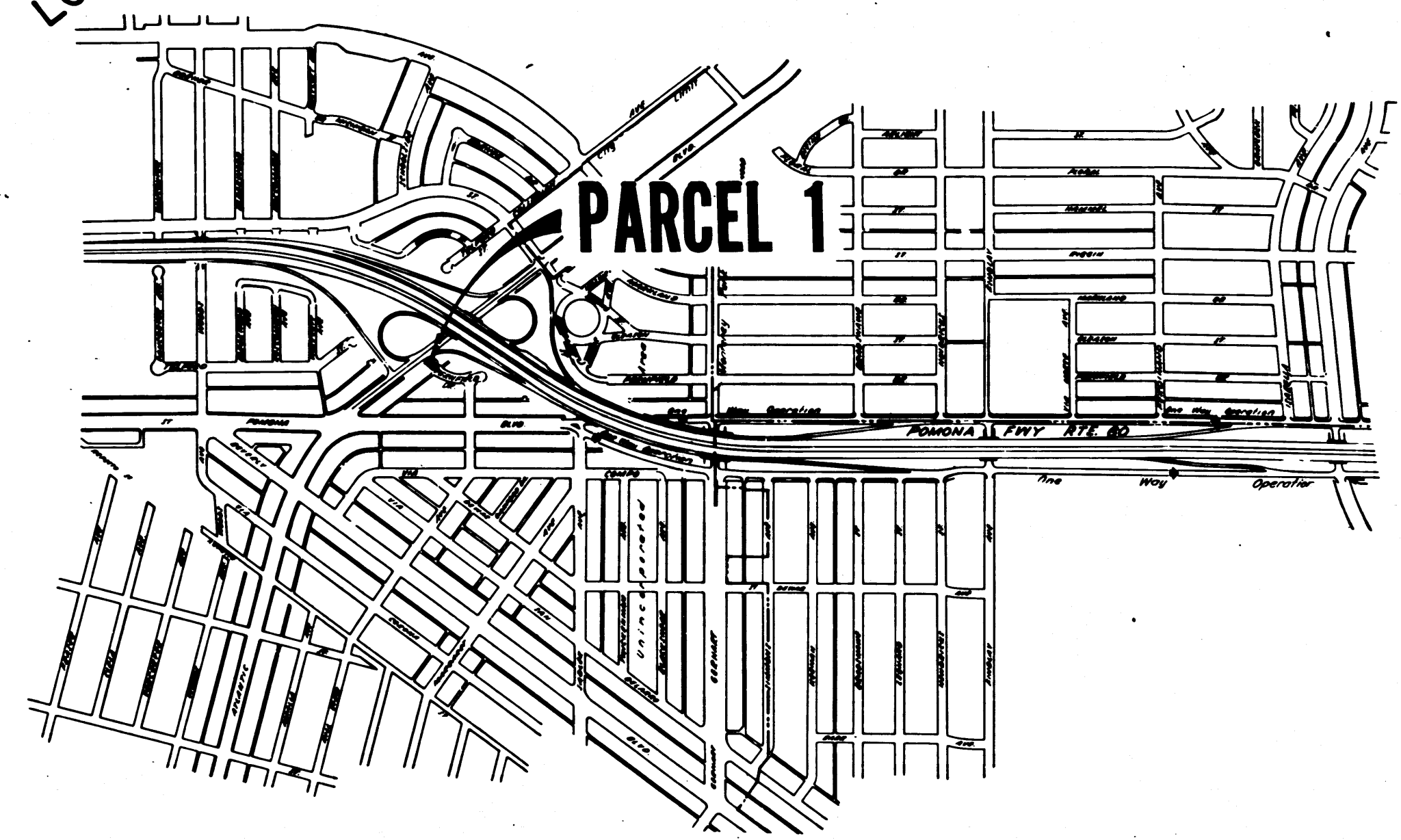
A.W. Felton
 ACTING CHIEF, RIGHT OF WAY ENGINEERING AND UTILITIES RELOCATION BRANCH

REGISTERED CIVIL ENGINEER NO. 6079
 JANUARY 30, 1974
 DATE

3709 FILED AT REQUEST OF DEPT. OF PUBLIC WORKS MAY 3, 1974 47 MIN 3 PM IN BOOK 12 AT PAGE 21 OF STATE HIGHWAY MAPS LOS ANGELES COUNTY, CALIF. COUNTY RECORDER BY *Freel* Deputy

Recorded in the Office of the County Recorder LOS ANGELES COUNTY S.H.M.B. No. Pg.

COUNTY OF LOS ANGELES



STATE OF CALIFORNIA
 BUSINESS AND TRANSPORTATION AGENCY
 DEPARTMENT OF TRANSPORTATION

PROPOSED RELINQUISHMENT

0 600 1200 1800 2400

AREA TO BE RELINQUISHED

DR'N BY H.L.	R/W MAP NO. F-1782
C'LC BY A.M.	CONTRACT NO. 165-8
C'K'D BY J.L.M.	REL-635
REVISED	

COUNTY ENGINEER'S COPY

12
21
3:47

35

FILED WITH LOS ANGELES COUNTY RECORDER
MAY 7 1974

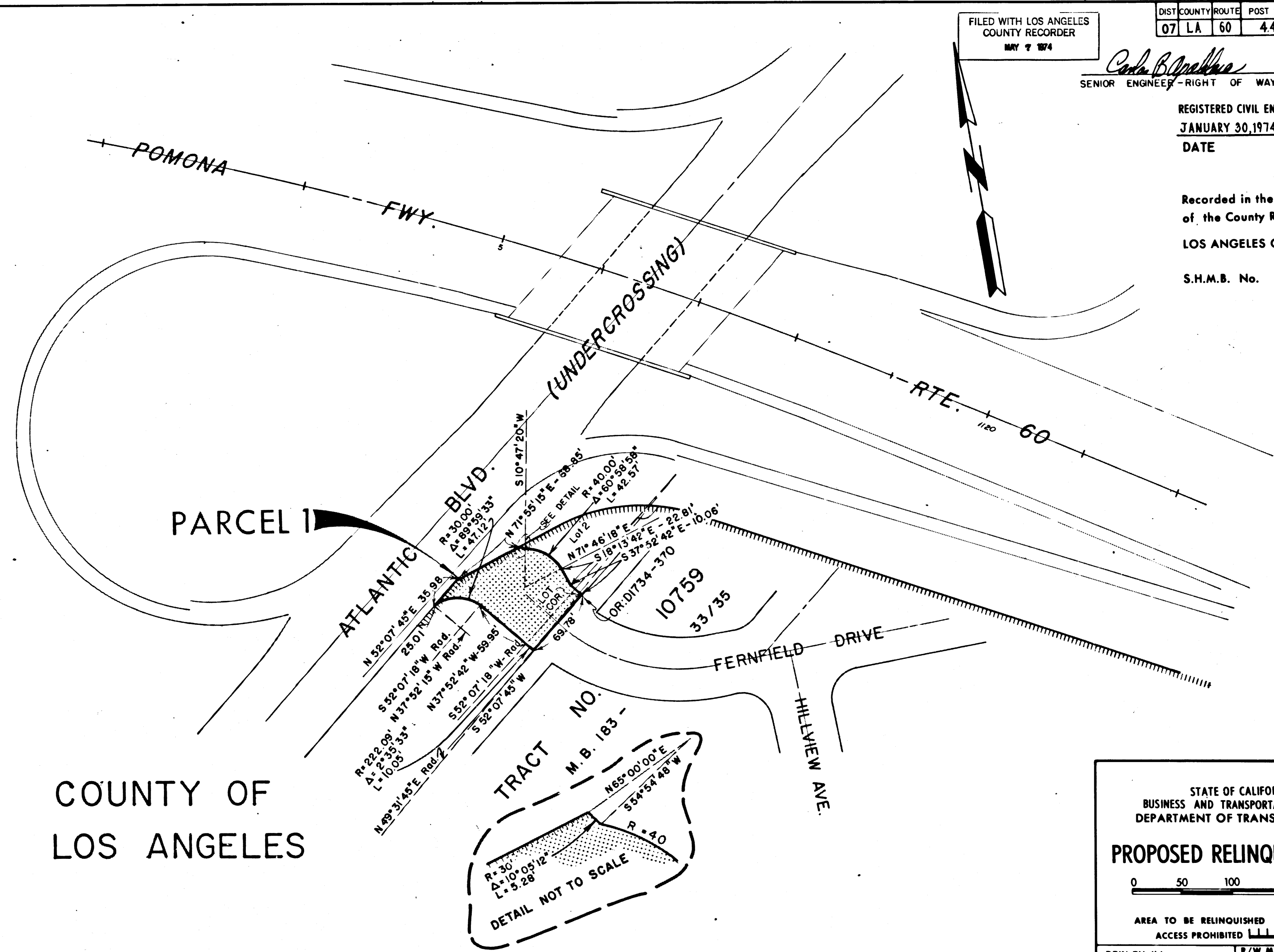
DIST	COUNTY	ROUTE	POST MILES	SHEET NO.	TOTAL SHEETS
07	LA	60	4.4	2	2

Carla B. Bapaldua
SENIOR ENGINEER - RIGHT OF WAY ENGINEERING

REGISTERED CIVIL ENGINEER NO. 14117
JANUARY 30, 1974
DATE

Recorded in the Office
of the County Recorder
LOS ANGELES COUNTY

S.H.M.B. No. Pg.



COUNTY OF
LOS ANGELES

STATE OF CALIFORNIA
BUSINESS AND TRANSPORTATION AGENCY
DEPARTMENT OF TRANSPORTATION

PROPOSED RELINQUISHMENT

0 50 100 150 200

AREA TO BE RELINQUISHED

ACCESS PROHIBITED

DR'N BY H.L.	R/W MAP NO. F-1782
C'LC BY A.M.	CONTRACT NO. 165-8
C'K'D BY J.L.M.	REL-635
REVISED	