

STATE OF CALIFORNIA
 BUSINESS AND TRANSPORTATION AGENCY
 DEPARTMENT OF TRANSPORTATION

RIGHT OF WAY MAPS OF
 STATE HIGHWAY

In the County of Los Angeles along
 Rte. 60 Fwy. at Grand Ave.

3711

FILED
 AT REQUEST OF
 DEPT. OF PUBLIC WORKS
 MAY 31 1974
 47 MIN. 3 AM
 PAST
 IN BOOK 12
 AT PAGE 25
 OF STATE HIGHWAY MAPS
 LOS ANGELES COUNTY, CALIF.
 COUNTY RECORDER
 BY *Free* Deputy

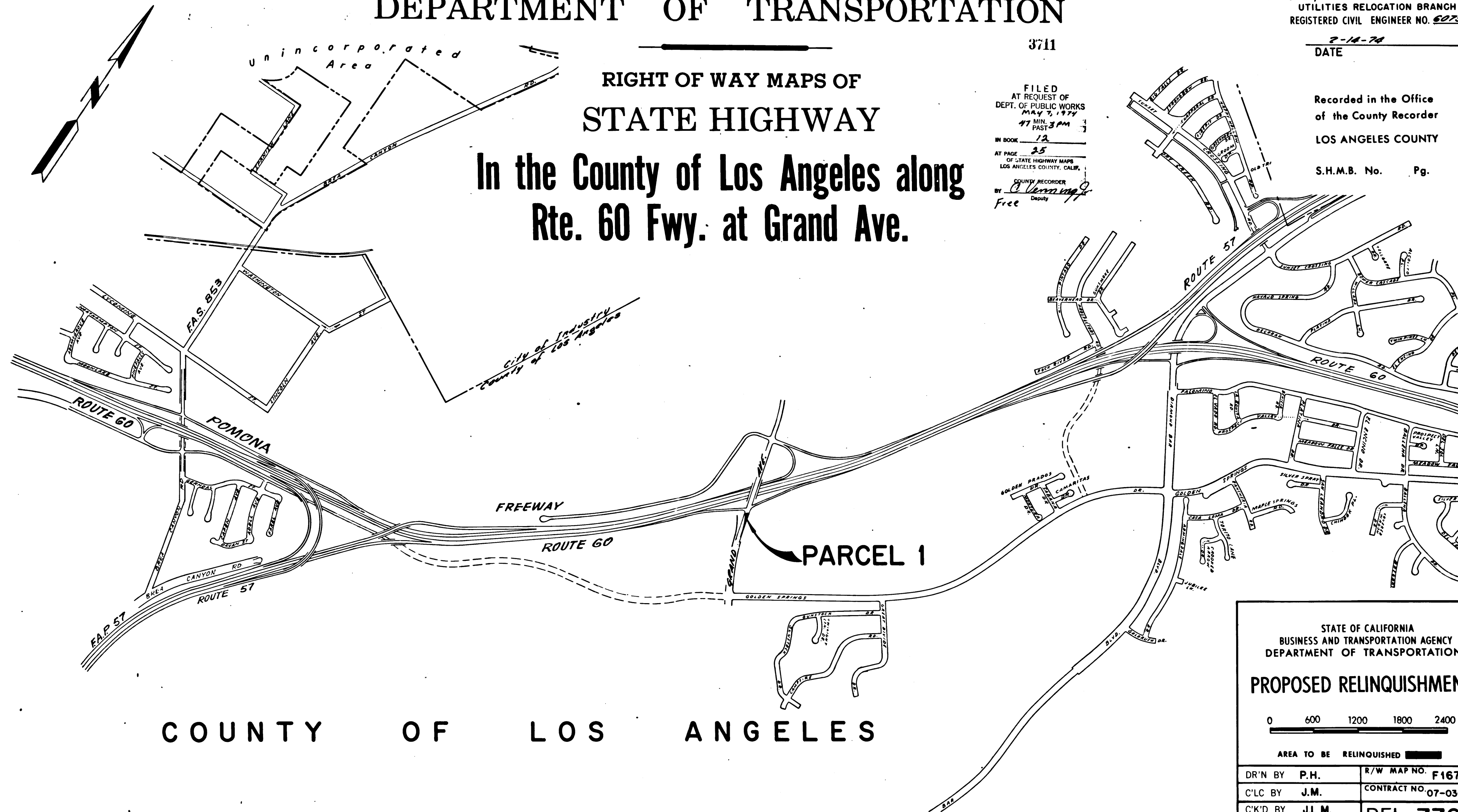
BOOK 12		PAGE 25			
DIST	COUNTY	ROUTE	POST MILES	SHEET NO.	TOTAL SHEETS
07	L.A.	60	24.4	1	2

B.W. Felt
 CHIEF, RIGHT OF WAY ENGINEER AND
 UTILITIES RELOCATION BRANCH
 REGISTERED CIVIL ENGINEER NO. 6079

2-14-74
 DATE

Recorded in the Office
 of the County Recorder
 LOS ANGELES COUNTY

S.H.M.B. No. Pg.



COUNTY OF LOS ANGELES

STATE OF CALIFORNIA
 BUSINESS AND TRANSPORTATION AGENCY
 DEPARTMENT OF TRANSPORTATION

PROPOSED RELINQUISHMENT

0 600 1200 1800 2400

AREA TO BE RELINQUISHED

DR'N BY P.H.	R/W MAP NO. F1675
C'LC BY J.M.	CONTRACT NO. 07-036394
C'K'D BY J.L.M.	REL-776
REVISED	

12/25

37

COUNTY ENGINEER'S COPY

DIST	COUNTY	ROUTE	POST MILES	SHEET NO.	TOTAL SHEETS
07	L.A.	60	24.4	2	2

FILED WITH LOS ANGELES COUNTY RECORDER
MAY 7 1974

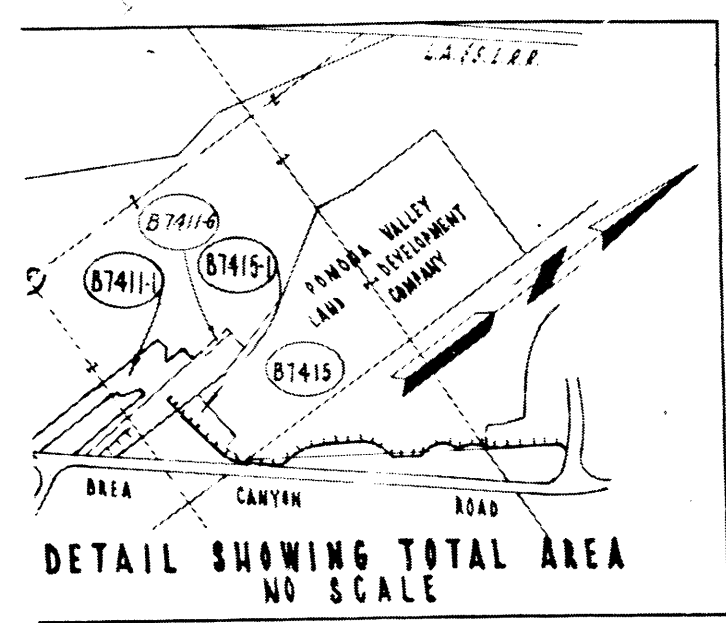
Carlo B. ...
SENIOR ENGINEER
RIGHT OF WAY ENGINEERING
REGISTERED CIVIL ENGINEER NO. 44117

2-14-74
DATE

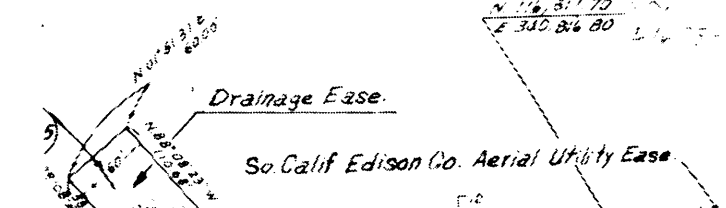
Recorded in the Office
of the County Recorder
LOS ANGELES COUNTY

S.H.M.B. No. Pg.

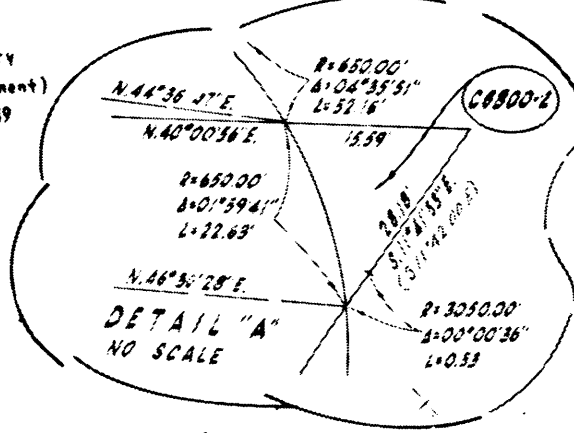
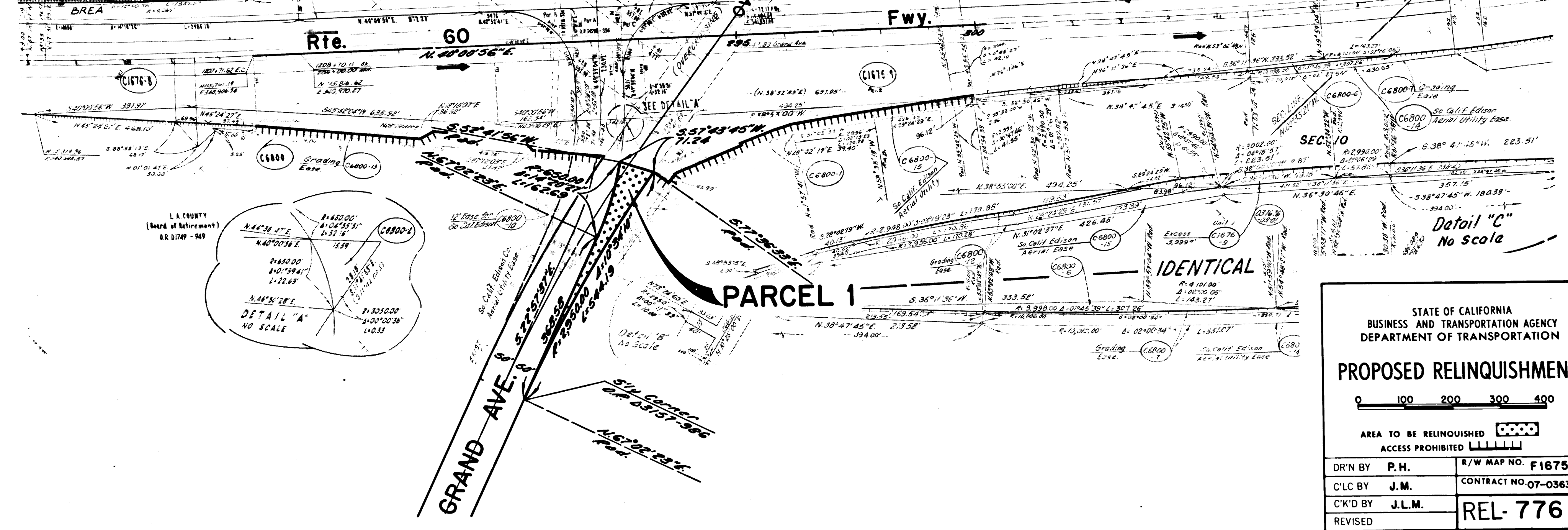
SEC. 9
T.2.S., R.1.W.
S. B. M.
COUNTY OF LOS ANGELES



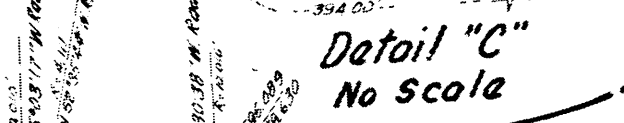
DETAIL SHOWING TOTAL AREA
NO SCALE



Drainage Ease
So Calif Edison Co. Aerial Utility Ease



DETAIL "A"
NO SCALE



Detail "C"
No Scale

STATE OF CALIFORNIA
BUSINESS AND TRANSPORTATION AGENCY
DEPARTMENT OF TRANSPORTATION

PROPOSED RELINQUISHMENT

0 100 200 300 400

AREA TO BE RELINQUISHED

ACCESS PROHIBITED

DR'N BY	P.H.	R/W MAP NO.	F1675
C/LC BY	J.M.	CONTRACT NO.	07-036394
C/K'D BY	J.L.M.	REL-	776
REVISED			