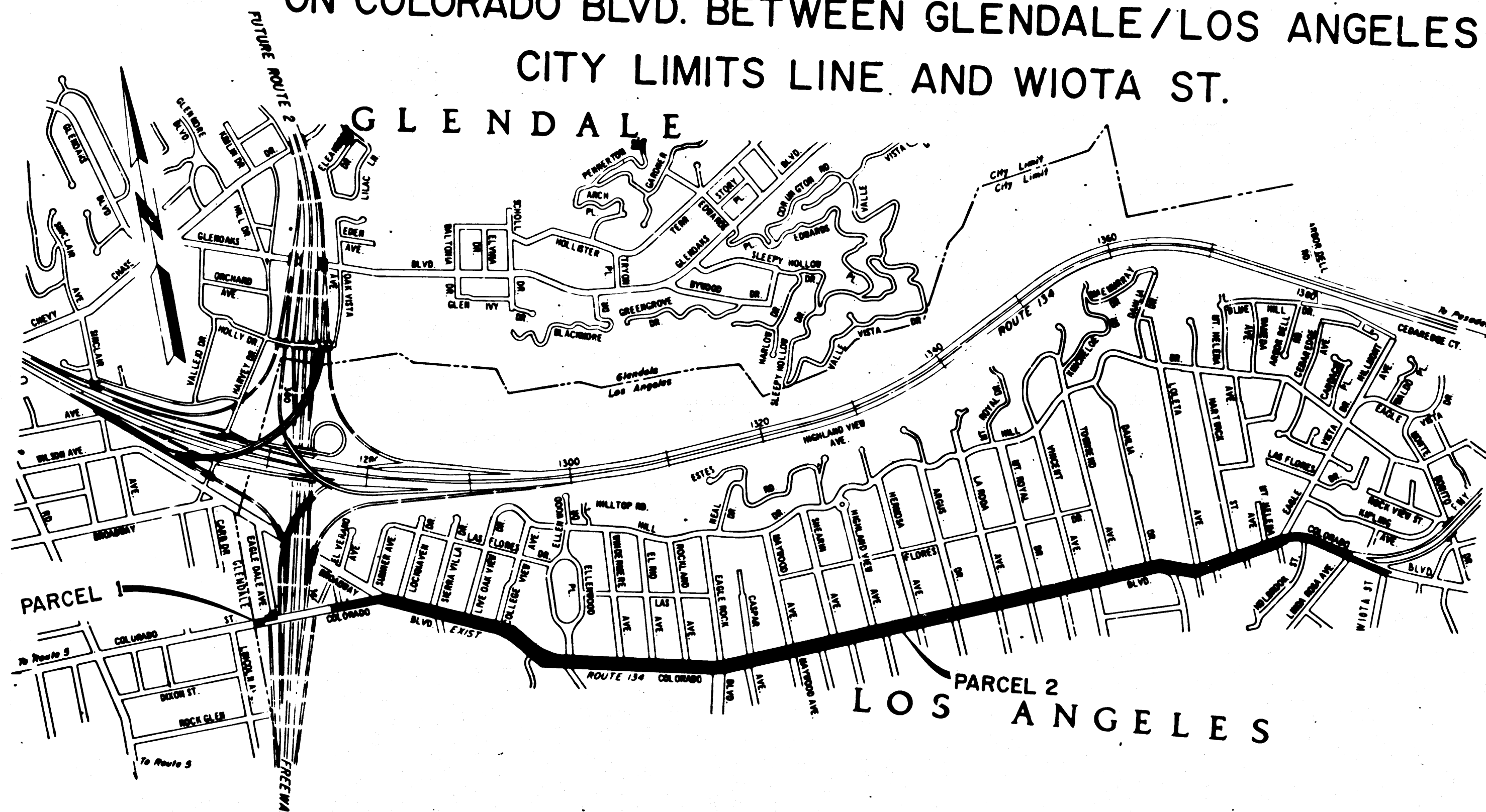


STATE OF CALIFORNIA  
 BUSINESS AND TRANSPORTATION AGENCY  
 DEPARTMENT OF TRANSPORTATION

RIGHT OF WAY MAPS OF  
 STATE HIGHWAY

IN THE CITY OF LOS ANGELES  
 ON COLORADO BLVD. BETWEEN GLENDALE/LOS ANGELES  
 CITY LIMITS LINE AND WIOTA ST.



DIST	COUNTY	ROUTE	POST MILES	SHEET NO.	TOTAL SHEETS
07	LA	134	7.5/9.7	1	3

3868

FILED  
 AT REQUEST OF  
 DEPT. OF PUBLIC WORKS  
 MAY 2, 1974  
 47 PAST 2 PM  
 IN BOOK 12  
 AT PAGE 40  
 OF STATE HIGHWAY MAPS  
 LOS ANGELES COUNTY, CALIF.  
 COUNTY RECORDER  
 BY *[Signature]*  
 Free Deputy

*[Signature]*  
 CHIEF, RIGHT OF WAY ENGINEERING  
 AND UTILITIES RELOCATION BRANCH  
 REGISTERED CIVIL ENGINEER NO. 12767

5-2-74  
 DATE

Recorded in the Office  
 of the County Recorder  
 LOS ANGELES COUNTY

S.H.M.B. No. Pg.

STATE OF CALIFORNIA  
 BUSINESS AND TRANSPORTATION AGENCY  
 DEPARTMENT OF TRANSPORTATION

**PROPOSED RELINQUISHMENT**

0 600 1200 1800 2400

AREA TO BE RELINQUISHED ██████████

DR'N BY DM	R/W MAP NO. 1269-6
C/LC BY JM, RO	P. 5507, F. 1167, 1269-7
C/K'D BY	CONTRACT NO.
REVISED	<b>REL-845</b>

COUNTY ENGINEER'S COPY

13/40

# CITY OF LOS ANGELES

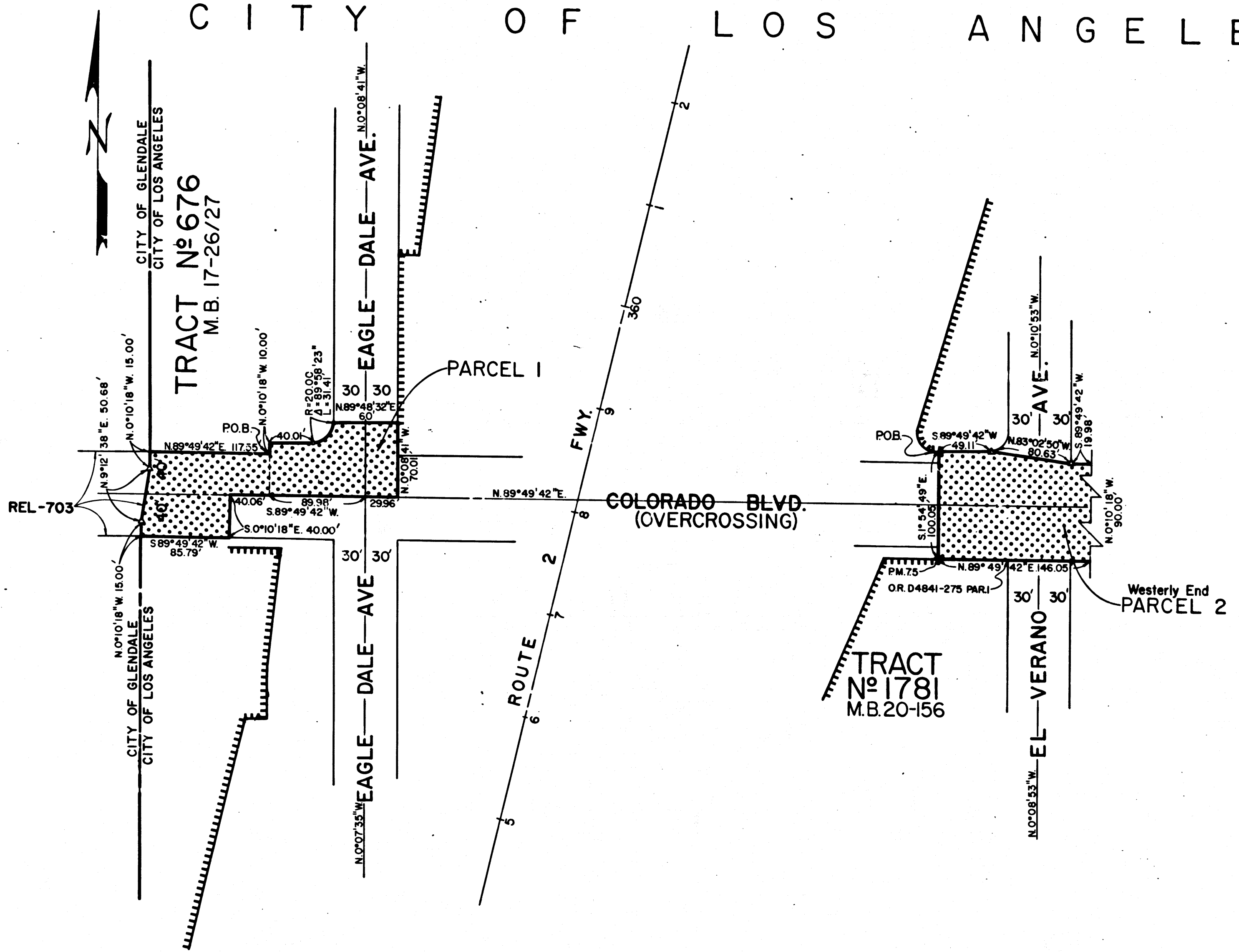
BOOK 12	PAGE 41
DIST. COUNTY ROUTE	POST MILES SHEET NO. TOTAL SHEETS
07 LA 134	7.5/9.7 2 3

*Charles B. Appleton*  
 SENIOR ENGINEER,  
 RIGHT OF WAY ENGINEERING  
 REGISTERED CIVIL ENGINEER NO. 14,117

5-2-74  
 DATE FILED WITH LOS ANGELES  
 COUNTY RECORDER  
 MAY 21 1974

Recorded in the Office  
 of the County Recorder  
 LOS ANGELES COUNTY

S.H.M.B. No. Pg.



STATE OF CALIFORNIA  
 BUSINESS AND TRANSPORTATION AGENCY  
 DEPARTMENT OF TRANSPORTATION

## PROPOSED RELINQUISHMENT

0 50 100 150 200

AREA TO BE RELINQUISHED XXXX  
 ACCESS PROHIBITED XXXXXX

DR'N BY DM	R/W MAP NO. F1269-6 F1269-7
C'LC BY JM	CONTRACT NO.
C'K'D BY	<b>REL-845</b>
REVISED	

COUNTY ENGINEER'S COPY

12  
41

DIST	COUNTY	ROUTE	POST MILES	SHEET NO.	TOTAL SHEETS
07	LA	134	7.5/9.7	3	3

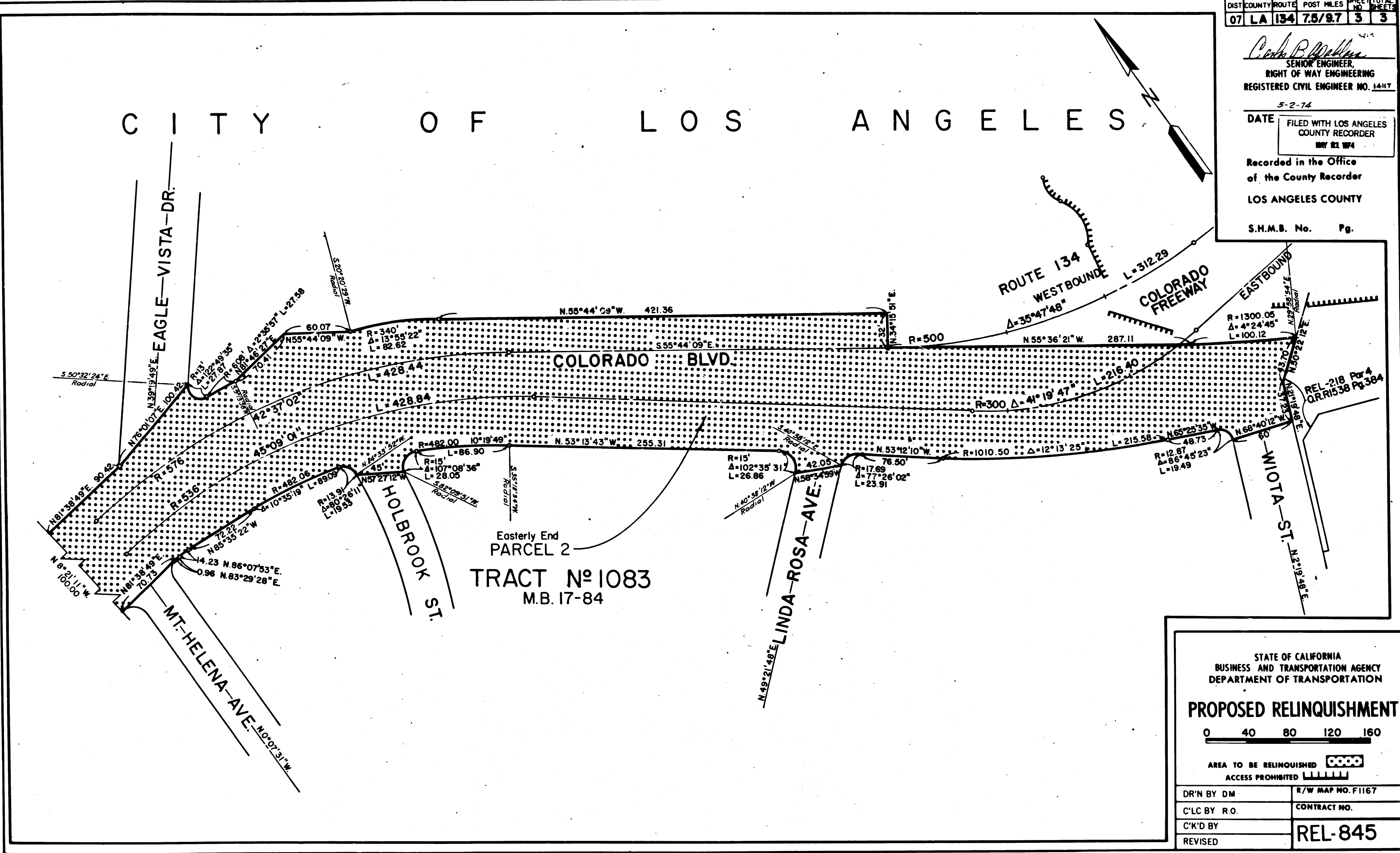
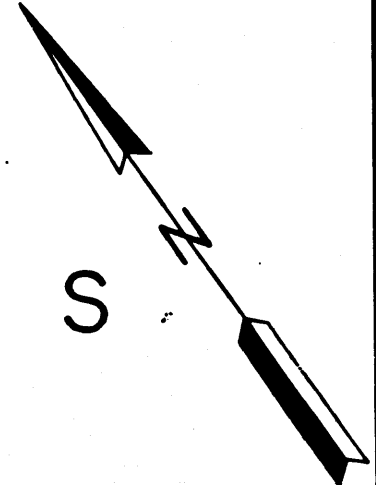
*Carl B. Williams*  
 SENIOR ENGINEER  
 RIGHT OF WAY ENGINEERING  
 REGISTERED CIVIL ENGINEER NO. 14117

5-2-74  
 DATE FILED WITH LOS ANGELES COUNTY RECORDER  
 MAY 21 1974

Recorded in the Office of the County Recorder  
 LOS ANGELES COUNTY

S.H.M.B. No. Pg.

CITY OF LOS ANGELES



Easterly End  
 PARCEL 2  
 TRACT N° 1083  
 M.B. 17-84

STATE OF CALIFORNIA  
 BUSINESS AND TRANSPORTATION AGENCY  
 DEPARTMENT OF TRANSPORTATION

PROPOSED RELINQUISHMENT



AREA TO BE RELINQUISHED [Stippled Pattern]  
 ACCESS PROHIBITED [Dashed Line Pattern]

DR'N BY DM	R/W MAP NO. F1167
C'LC BY R.O.	CONTRACT NO.
C'K'D BY	REL-845
REVISED	

COUNTY ENGINEER'S COPY