

17/52 2.8M

BOOK 12 PAGE 52

DIST	COUNTY	ROUTE	POST MILES	SHEET NO.	TOTAL SHEETS
07	LA	101	35.2/36.9	1	4

STATE OF CALIFORNIA
 BUSINESS AND TRANSPORTATION AGENCY
 DEPARTMENT OF TRANSPORTATION

3279
 FILED
 AT REQUEST OF
 DEPT. OF PUBLIC WORKS
 SEPT. 17, 1974
 27 MIN.
 PAST 3 PM
 IN BOOK 12
 AT PAGE 52
 OF STATE HIGHWAY MAPS
 LOS ANGELES COUNTY, CALIF.
 COUNTY RECORDER
 J. L. Brady
 Deputy
 FREE

R. J. Rosa
 CHIEF, RIGHT OF WAY ENGINEERING
 AND UTILITIES RELOCATION BRANCH
 REGISTERED CIVIL ENGINEER NO. 12767

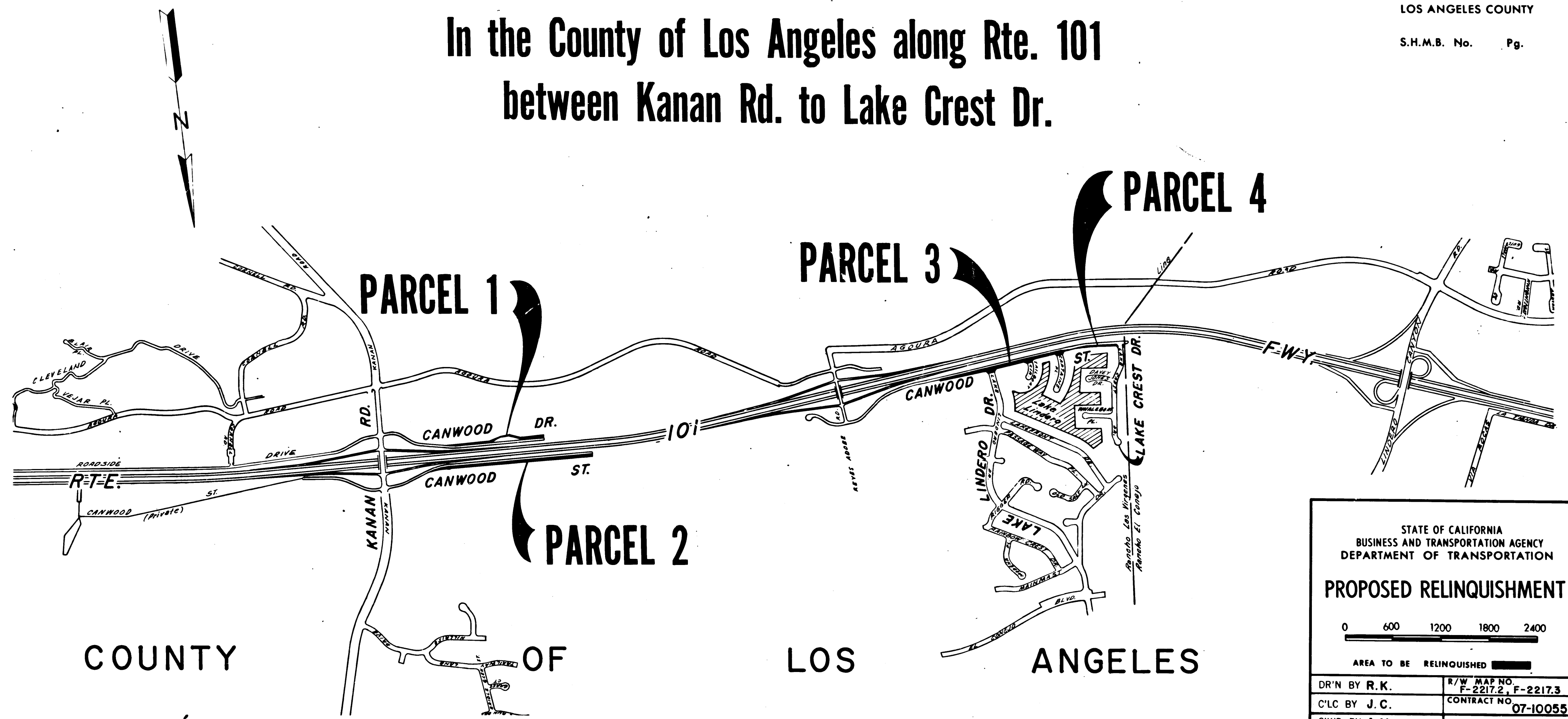
DATE 6-7-74

Recorded in the Office
 of the County Recorder
 LOS ANGELES COUNTY

S.H.M.B. No. Pg.

RIGHT OF WAY MAPS OF
 STATE HIGHWAY

In the County of Los Angeles along Rte. 101
 between Kanan Rd. to Lake Crest Dr.



STATE OF CALIFORNIA
 BUSINESS AND TRANSPORTATION AGENCY
 DEPARTMENT OF TRANSPORTATION

PROPOSED RELINQUISHMENT

0 600 1200 1800 2400

AREA TO BE RELINQUISHED

DR'N BY R.K.	R/W MAP NO. F-2217.2, F-2217.3
C'LC BY J.C.	CONTRACT NO. 07-100554
C'K'D BY A.M.	REL-906
REVISED 4-15-74	

COUNTY ENGINEER'S COPY

1453

DIST	COUNTY	ROUTE	POST MILES	SHEET NO	TOTAL SHEETS
07	LA	101	35.4	2	4

FILED WITH LOS ANGELES COUNTY RECORDER
SEP 17 1974

Carl B. Walker
SENIOR ENGINEER
RIGHT OF WAY ENGINEERING
REGISTERED CIVIL ENGINEER NO. 14117

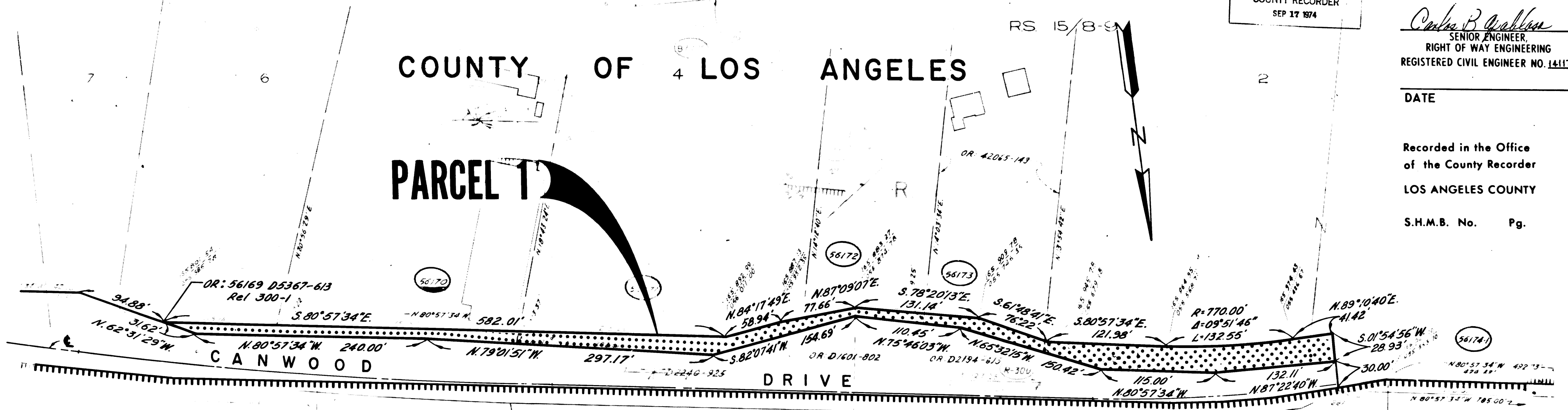
DATE

Recorded in the Office of the County Recorder
LOS ANGELES COUNTY

S.H.M.B. No. Pg.

COUNTY OF LOS ANGELES

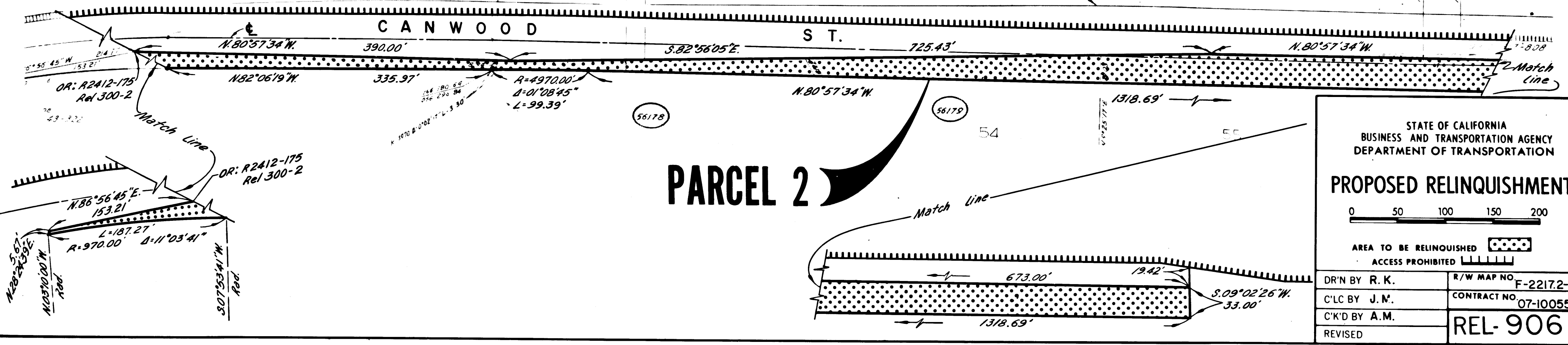
PARCEL 1



Access Rights Previously Acquired
SEE F-2247-2-5

CANWOOD ST.

PARCEL 2



STATE OF CALIFORNIA
BUSINESS AND TRANSPORTATION AGENCY
DEPARTMENT OF TRANSPORTATION

PROPOSED RELINQUISHMENT

0 50 100 150 200

AREA TO BE RELINQUISHED [Pattern]

ACCESS PROHIBITED [Pattern]

DR'N BY R. K.	R/W MAP NO F-22172-5
C'LC BY J. M.	CONTRACT NO 07-100554
C'K'D BY A. M.	REL-906
REVISED	

COUNTY ENGINEER'S COPY

1454

DIST	COUNTY	ROUTE	POST MILES	SHEET NO.	TOTAL SHEETS
07	LA	101	36.5	3	4

FILED WITH LOS ANGELES COUNTY RECORDER
SEP 17 1974

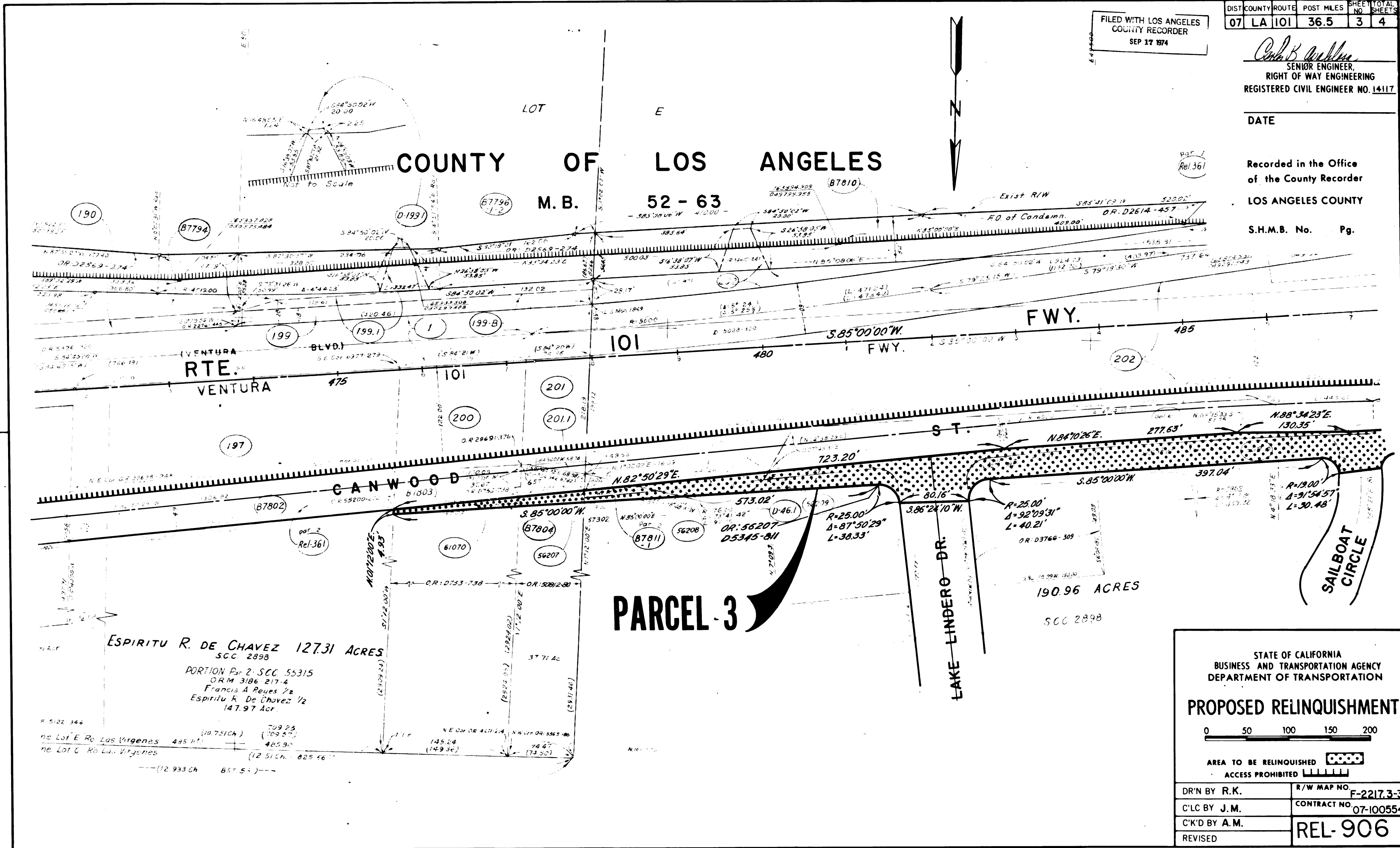
Carl B. Walker
SENIOR ENGINEER,
RIGHT OF WAY ENGINEERING
REGISTERED CIVIL ENGINEER NO. 14117

DATE

Recorded in the Office of the County Recorder

LOS ANGELES COUNTY

S.H.M.B. No. Pg.



COUNTY ENGINEER'S COPY

DIST	COUNTY	ROUTE	POST MILES	SHEET TOTAL
07	LA	101	36.9	4 4

FILED WITH LOS ANGELES COUNTY RECORDER
SEP 17 1974

Charles B. Anderson
SENIOR ENGINEER,
RIGHT OF WAY ENGINEERING
REGISTERED CIVIL ENGINEER NO. 14117

COUNTY OF LOS ANGELES

M.R. 52-63

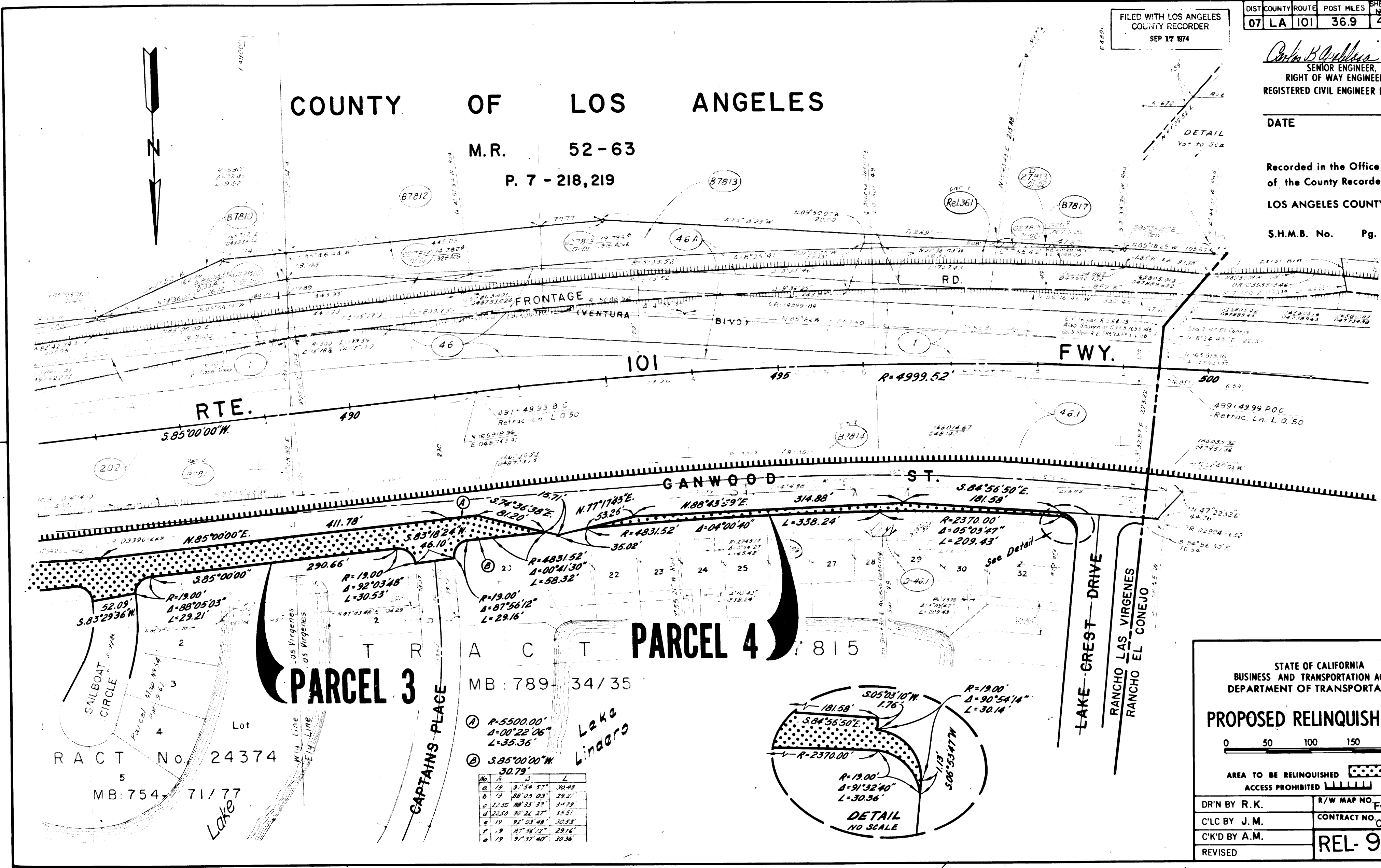
P. 7 - 218,219

DATE

Recorded in the Office of the County Recorder

LOS ANGELES COUNTY

S.H.M.B. No. Pg.



STATE OF CALIFORNIA
BUSINESS AND TRANSPORTATION AGENCY
DEPARTMENT OF TRANSPORTATION

PROPOSED RELINQUISHMENT

0 50 100 150 200

AREA TO BE RELINQUISHED [Hatched Area]

ACCESS PROHIBITED [Hatched Area]

DR'N BY R.K.	R/W MAP NO. F-2217.3-4
C'L'C BY J.M.	CONTRACT NO. 07-100554
C'K'D BY A.M.	REL-906
REVISED	

COUNTY ENGINEER'S COPY