

STATE OF CALIFORNIA
 BUSINESS AND TRANSPORTATION AGENCY
 DEPARTMENT OF TRANSPORTATION

RIGHT OF WAY MAPS OF
 STATE HIGHWAY
 IN THE CITY OF LONG BEACH ON ARTESIA BLVD. (RTE. 91)
 BETWEEN SUSANA RD. AND ATLANTIC BLVD.

DIST	COUNTY	ROUTE	POST MILES	SHEET NO.	TOTAL SHEETS
07	LA	91	10.84/11.45	1	5

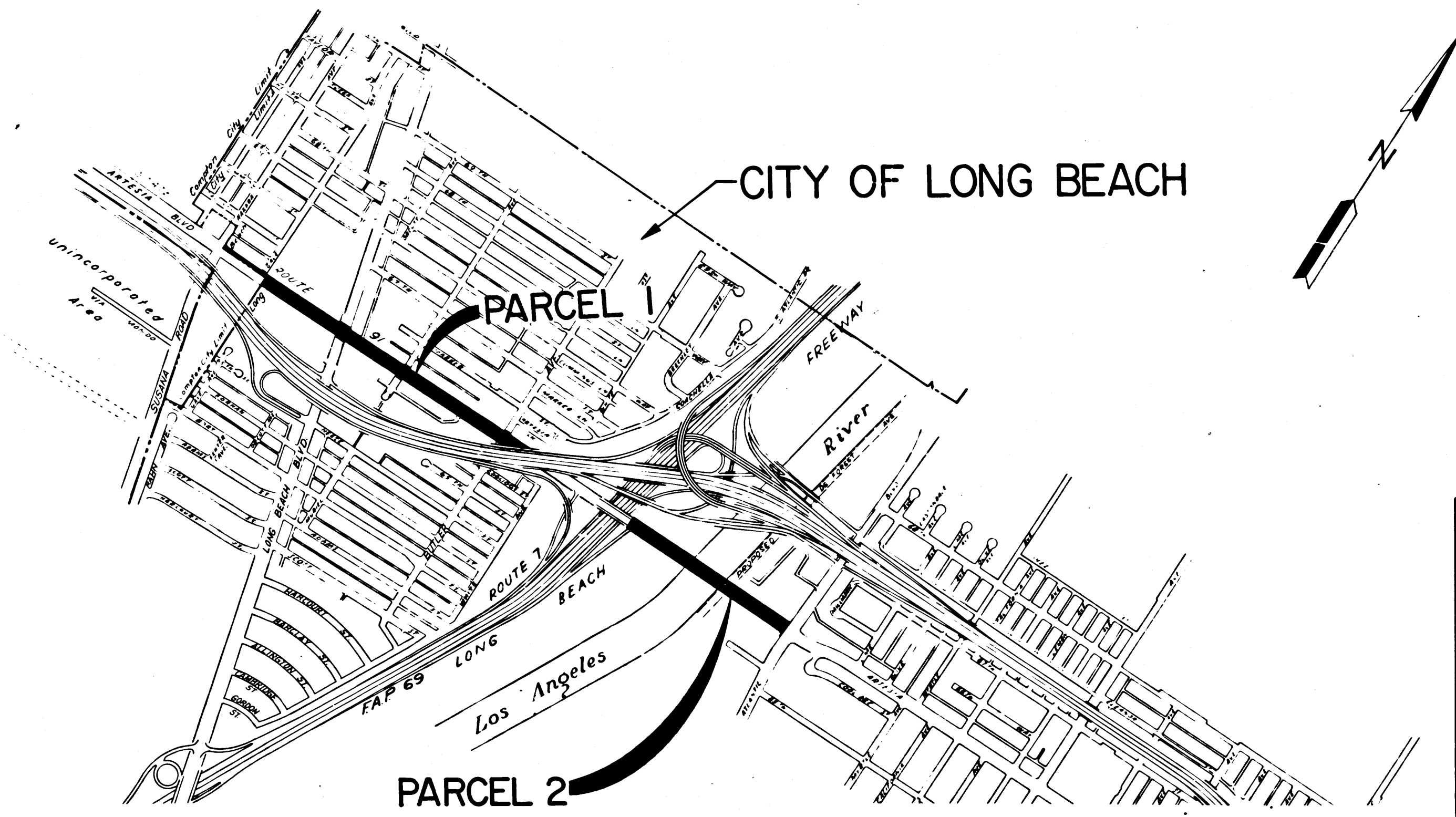
2543
 FILED
 AT REQUEST OF
 DEPT. OF PUBLIC WORKS
 OCT. 7, 1974
 11 MIN
 PAST 2 AM
 IN BOOK 12
 AT PAGE 63
 OF STATE HIGHWAY MAPS
 LOS ANGELES COUNTY, CALIF.
 COUNTY RECORDER
 J. L. H. [Signature]
 Deputy

R. DeRosa
 CHIEF, RIGHT OF WAY ENGINEERING &
 UTILITIES RELOCATION BRANCH
 REGISTERED CIVIL ENGINEER NO. 12767

8-1-74
 DATE

Recorded in the Office
 of the County Recorder
 LOS ANGELES COUNTY

S.H.M.B. No. Pg.



STATE OF CALIFORNIA
 BUSINESS AND TRANSPORTATION AGENCY
 DEPARTMENT OF TRANSPORTATION

PROPOSED RELINQUISHMENT

0 600 1200 1800 2400

AREA TO BE RELINQUISHED

DR'N BY V.J. RYAN	R/W MAP NO. F1091B F1516
C'LC BY J. MORRIS	CONTRACT NO. 07-166314
C'K'D BY J. COTTON	REL-860
REVISED	

BOOK 12 PAGE 63
 38

COUNTY ENGINEER'S COPY

DIST	COUNTY	ROUTE	POST MILES	SHEET NO.	TOTAL SHEETS
07	LA	91	109	2	5

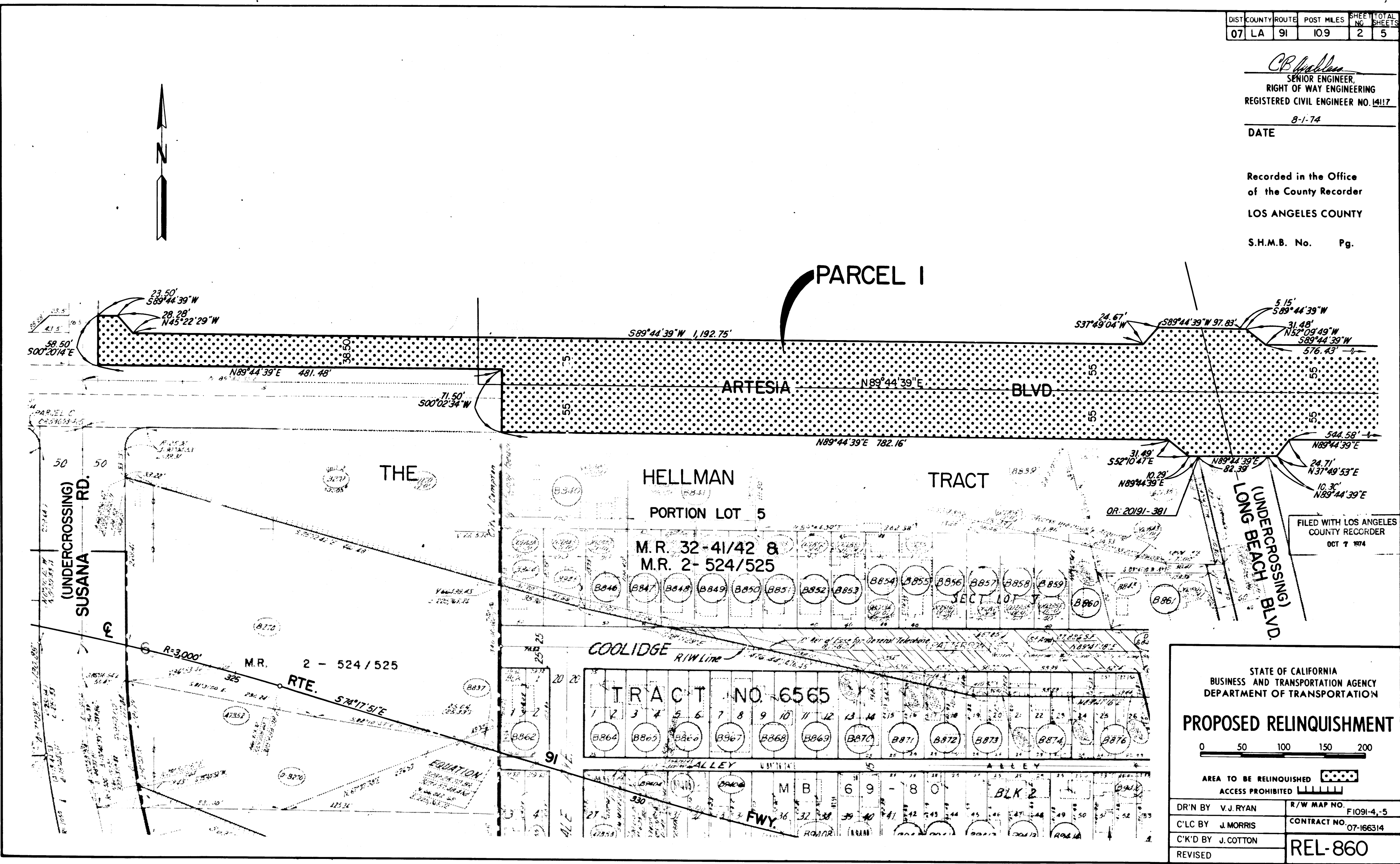
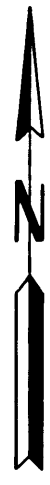
CB Hubler
 SENIOR ENGINEER,
 RIGHT OF WAY ENGINEERING
 REGISTERED CIVIL ENGINEER NO. 14117

8-1-74

DATE

Recorded in the Office
 of the County Recorder
 LOS ANGELES COUNTY

S.H.M.B. No. Pg.



FILED WITH LOS ANGELES
 COUNTY RECORDER
 OCT 7 1974

STATE OF CALIFORNIA
 BUSINESS AND TRANSPORTATION AGENCY
 DEPARTMENT OF TRANSPORTATION

PROPOSED RELINQUISHMENT

0 50 100 150 200

AREA TO BE RELINQUISHED ACCESS PROHIBITED

DR'N BY V.J. RYAN	R/W MAP NO. F1091-4-5
C'LC BY J. MORRIS	CONTRACT NO. 07-166314
C'K'D BY J. COTTON	REL-860
REVISED	

BOOK 12 PAGE 64

COUNTY ENGINEER'S COPY

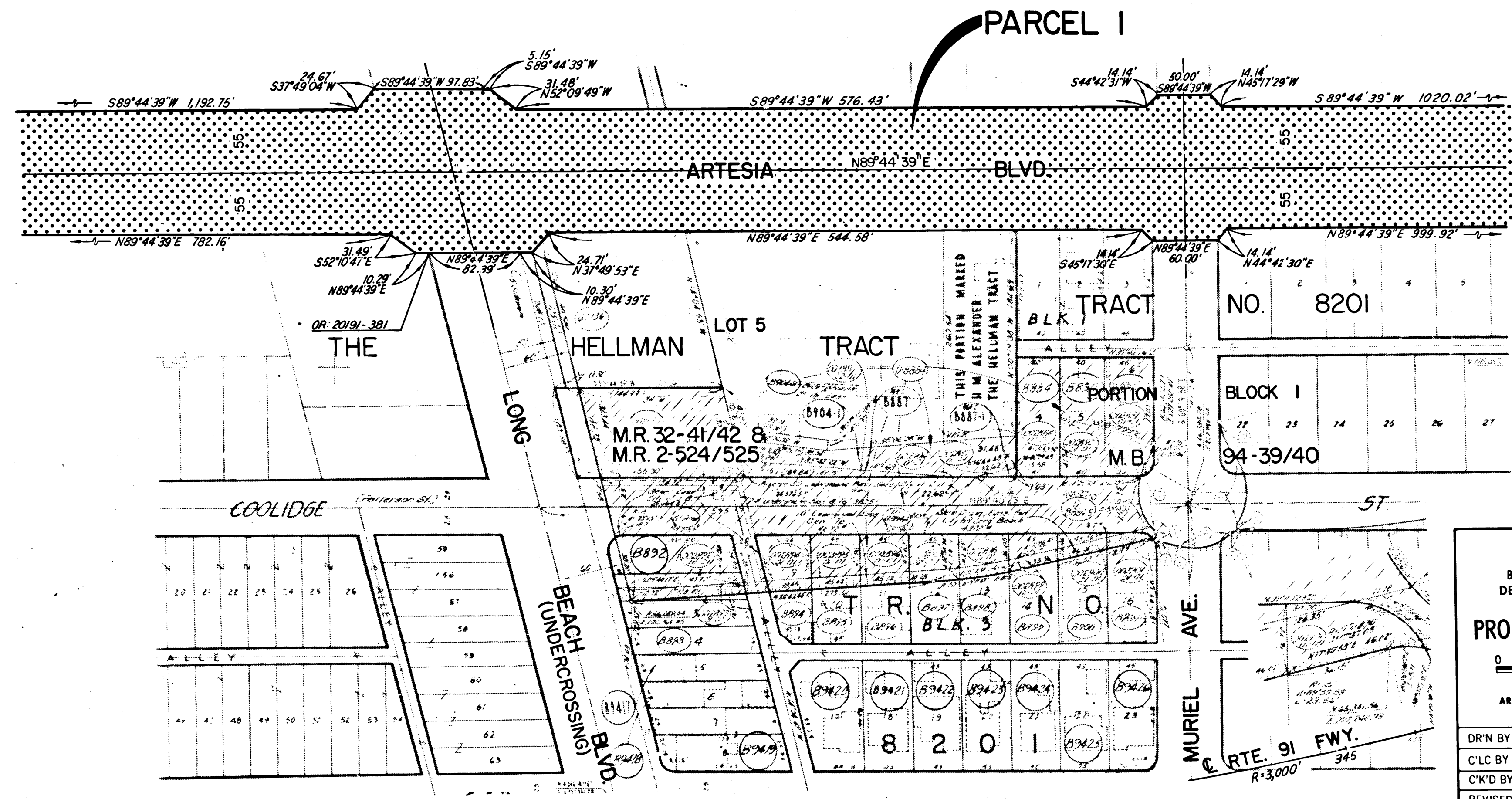
DIST	COUNTY	ROUTE	POST MILES	SHEET NO.	TOTAL SHEETS
07	LA	91	11.1	3	5

C.B. [Signature]
 SENIOR ENGINEER
 RIGHT OF WAY ENGINEERING
 REGISTERED CIVIL ENGINEER NO. 14117

DATE
 8-1-74

Recorded in the Office
 of the County Recorder
 LOS ANGELES COUNTY

S.H.M.B. No. Pg.



FILED WITH LOS ANGELES COUNTY RECORDER
 OCT 7 1974

STATE OF CALIFORNIA
 BUSINESS AND TRANSPORTATION AGENCY
 DEPARTMENT OF TRANSPORTATION

PROPOSED RELINQUISHMENT

0 50 100 150 200

AREA TO BE RELINQUISHED [Dotted Pattern]

ACCESS PROHIBITED [Hatched Pattern]

DR'N BY V. J. RYAN	R/W MAP NO. F1091-7
C'LC BY J. MORRIS	CONTRACT NO. 07-166314
C'K'D BY J. COTTON	REVISED

REL-860

BOOK 12 PAGE 65



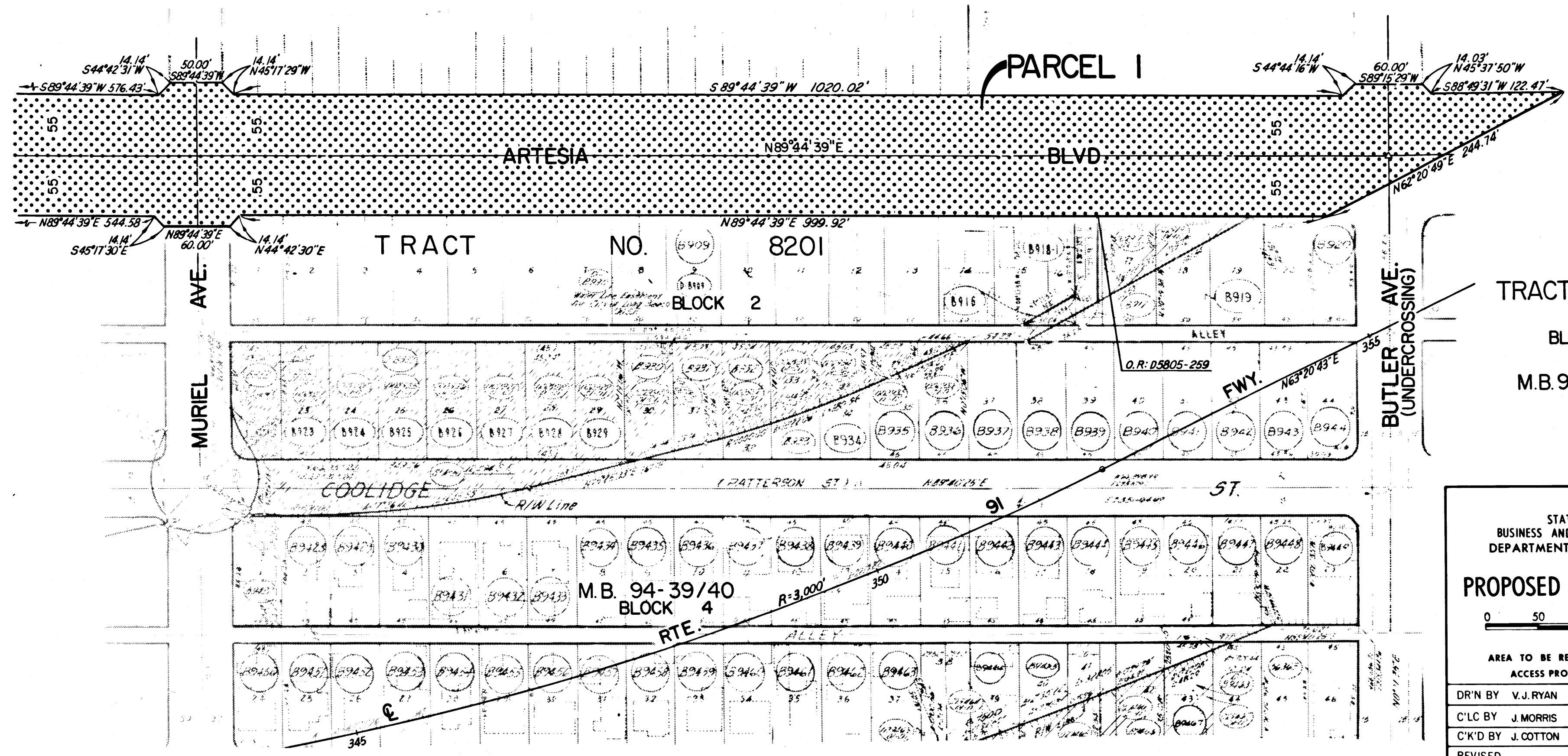
DIST	COUNTY	ROUTE	POST MILES	SHEET NO.	TOTAL SHEETS
07	LA	91	11.3	4	5

C.B. Anderson
 SENIOR ENGINEER,
 RIGHT OF WAY ENGINEERING
 REGISTERED CIVIL ENGINEER NO. 14117

DATE
 8-1-74

Recorded in the Office
 of the County Recorder
 LOS ANGELES COUNTY

S.H.M.B. No. Pg.



TRACT NO. 8201
 BLOCK 6
 M.B. 94-39/40

FILED WITH LOS ANGELES
 COUNTY RECORDER
 OCT 7 1974

STATE OF CALIFORNIA
 BUSINESS AND TRANSPORTATION AGENCY
 DEPARTMENT OF TRANSPORTATION

PROPOSED RELINQUISHMENT

0 50 100 150 200

AREA TO BE RELINQUISHED

ACCESS PROHIBITED

DR'N BY V.J. RYAN	R/W MAP NO. E1091-B, F1516-5
C'LC BY J. MORRIS	CONTRACT NO. 07-166314
C'K'D BY J. COTTON	REL-860
REVISED	

BOOK 12 PAGE 66

DIST	COUNTY	ROUTE	POST MILES	SHEET NO.	TOTAL SHEETS
07	LA	91	11.4	5	5

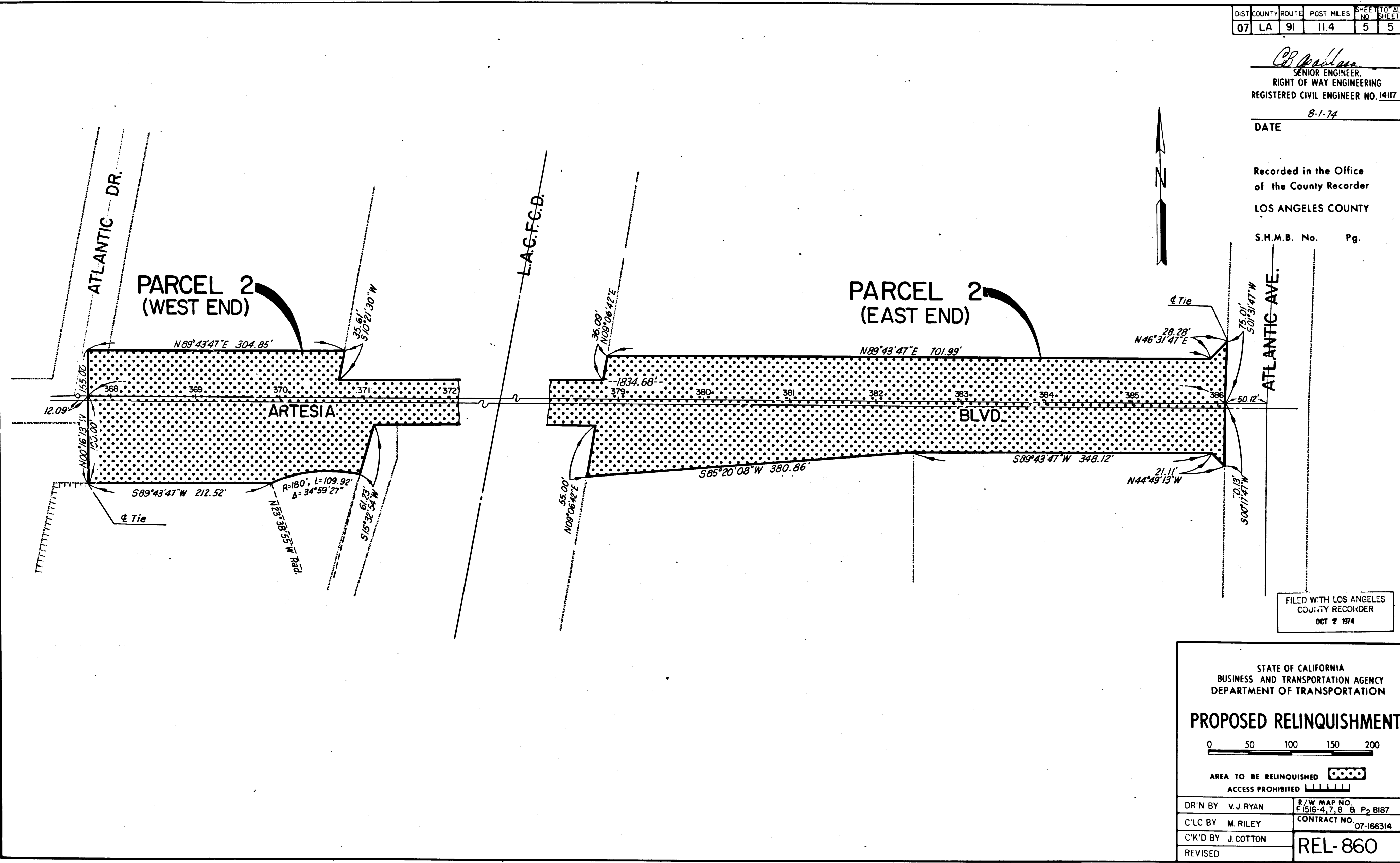
C.B. Williams
 SENIOR ENGINEER,
 RIGHT OF WAY ENGINEERING
 REGISTERED CIVIL ENGINEER NO. 14117

8-1-74

DATE

Recorded in the Office
 of the County Recorder
 LOS ANGELES COUNTY

S.H.M.B. No. Pg.



FILED WITH LOS ANGELES
 COUNTY RECORDER
 OCT 7 1974

STATE OF CALIFORNIA
 BUSINESS AND TRANSPORTATION AGENCY
 DEPARTMENT OF TRANSPORTATION

PROPOSED RELINQUISHMENT

0 50 100 150 200

AREA TO BE RELINQUISHED

ACCESS PROHIBITED

DR'N BY V.J. RYAN	R/W MAP NO. F 1516-4.7.8 & P 2 8187
C'LC BY M. RILEY	CONTRACT NO. 07-166314
C'K'D BY J. COTTON	REL-860
REVISED	

COUNTY ENGINEER'S COPY

BOOK 12 PAGE 67