

10/4 307

STATE OF CALIFORNIA
 BUSINESS AND TRANSPORTATION AGENCY
 DEPARTMENT OF TRANSPORTATION

DIST	COUNTY	ROUTE	POST MILES	SHEET NO.	TOTAL SHEETS
07	LA	60	23.7	1	1

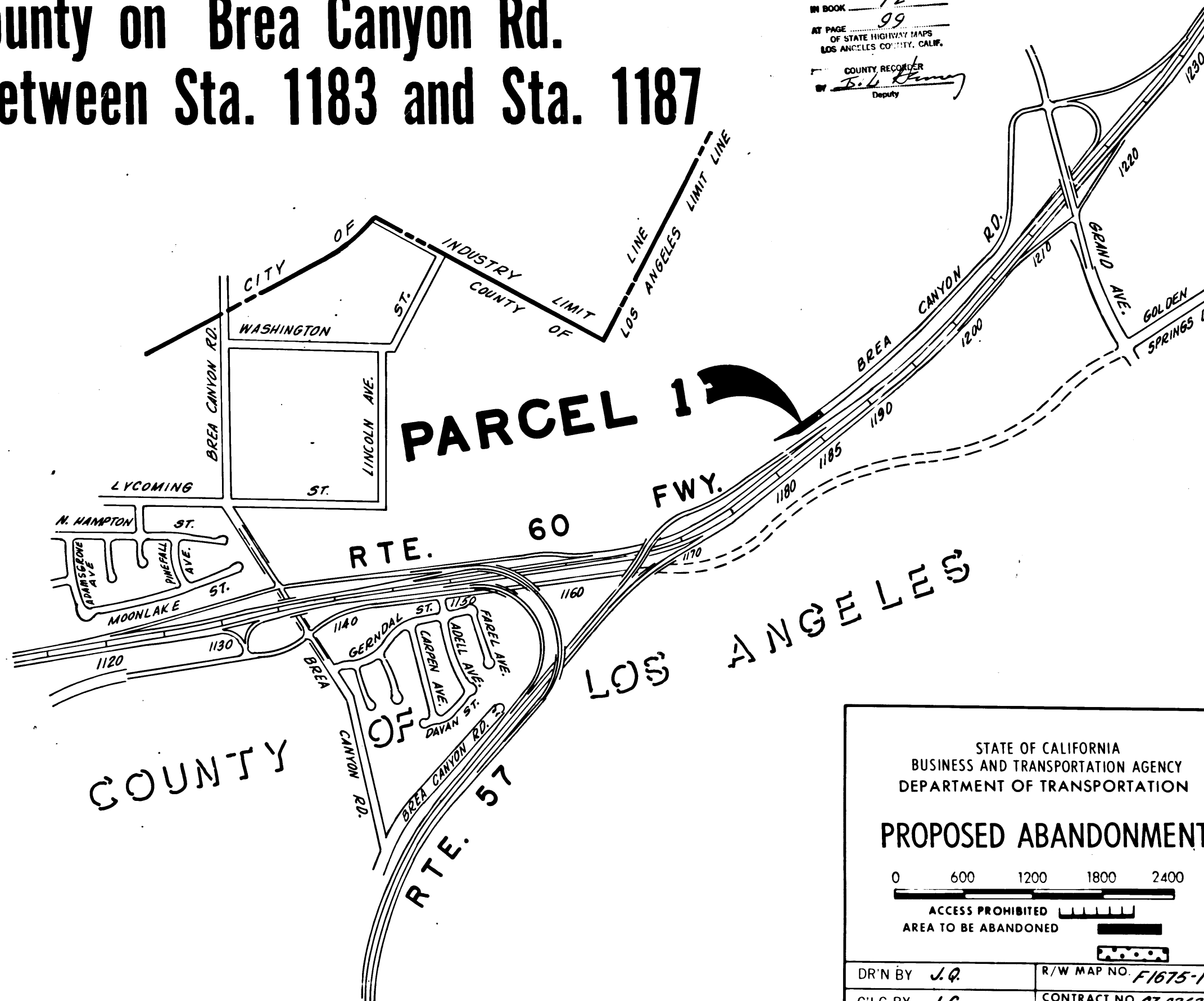
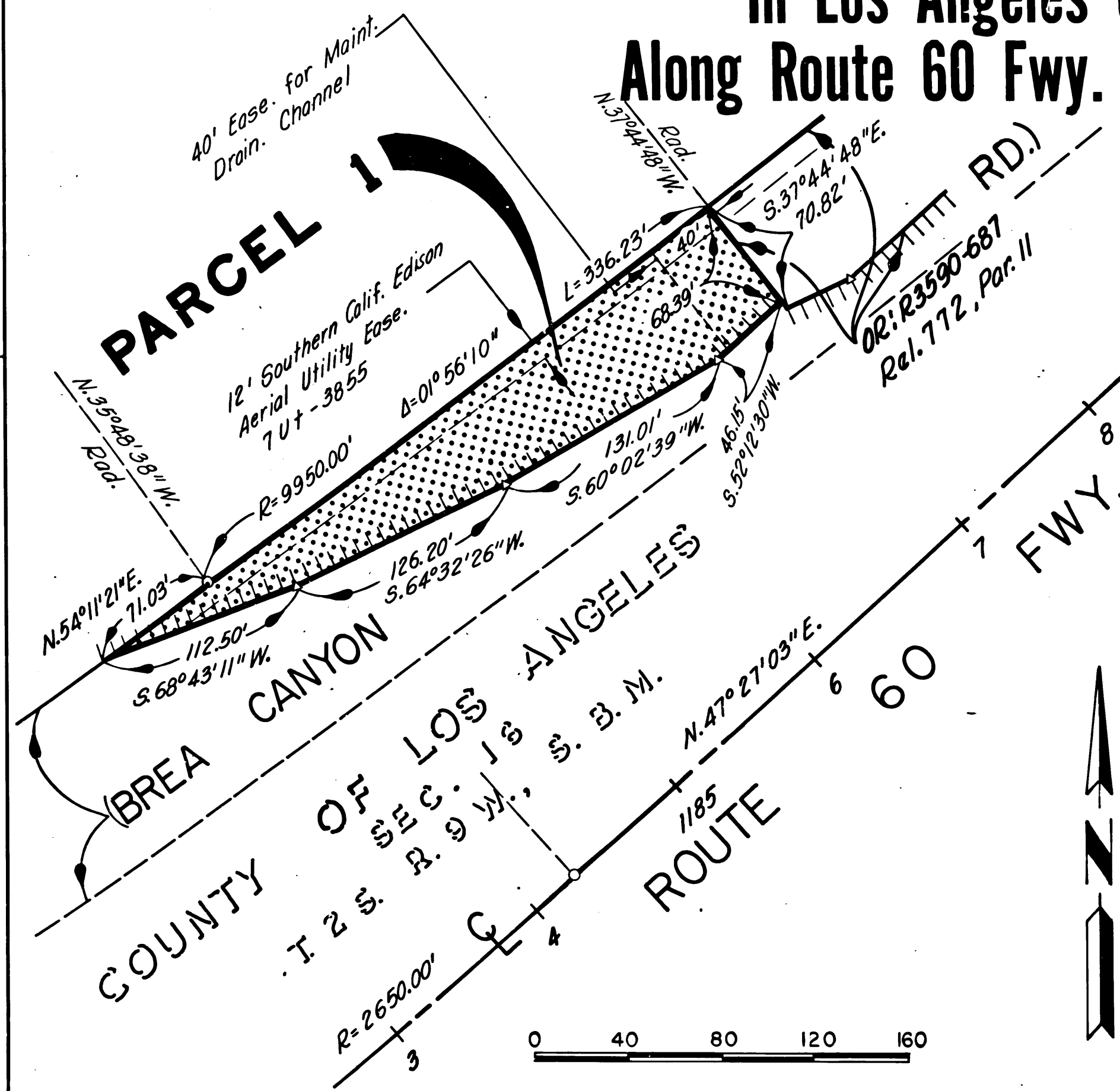
R. D. Brea
 CHIEF, RIGHT OF WAY ENGINEERING
 AND UTILITIES RELOCATION BRANCH
 REGISTERED CIVIL ENGINEER NO. 12767

1-30-75
 DATE

RIGHT OF WAY MAPS OF
 STATE HIGHWAY

In Los Angeles County on Brea Canyon Rd.
 Along Route 60 Fwy. Between Sta. 1183 and Sta. 1187

FILED
 AT REQUEST OF
 DEPT. OF PUBLIC WORKS
 FEB. 5, 1975
 47 PAST 2 PM
 IN BOOK 12
 AT PAGE 99
 OF STATE HIGHWAY MAPS
 LOS ANGELES COUNTY, CALIF.
 COUNTY RECORDER
J. L. Hume
 Deputy



STATE OF CALIFORNIA
 BUSINESS AND TRANSPORTATION AGENCY
 DEPARTMENT OF TRANSPORTATION

PROPOSED ABANDONMENT

0 600 1200 1800 2400
 ACCESS PROHIBITED [diagonal lines]
 AREA TO BE ABANDONED [solid black]

DR'N BY <i>J.R.</i>	R/W MAP NO. <i>F1675-1</i>
C'LC BY <i>J.C.</i>	CONTRACT NO. <i>07-036304</i>
C'K'D BY <i>H.L.</i>	ABD-99
REVISED <i>9-4-73</i>	

37