

17/6

DIST	COUNTY	ROUTE	POST MILES	SHEET NO.	TOTAL SHEETS
07	LA	210	6.0/62	2	3

FILED WITH LOS ANGELES COUNTY RECORDER
JAN 21 1975

COUNTY OF LOS ANGELES

C.B. Miller
SENIOR ENGINEER
RIGHT OF WAY ENGINEERING
REGISTERED CIVIL ENGINEER NO. 14117

11-13-74
DATE

Recorded in the Office of the County Recorder
LOS ANGELES COUNTY

S.H.M.B. No. Pg.

PARCEL 4
PARCEL 2

PARCEL 3

PARCEL 1

T.2 N. , R.15 W. , S.B.M.

SEC. I



LOT 5

CURVE DATA
 (A) R=526.62' S.70°07'35"E. 22.00'
 Δ=3°57'04" L=36.32' S.73°25'01"E. 8.28'
 (B) R=643.00' Δ=4°11'44" L=47.08'

STATE OF CALIFORNIA
BUSINESS AND TRANSPORTATION AGENCY
DEPARTMENT OF TRANSPORTATION

PROPOSED RELINQUISHMENT

0 50 100 150 200

AREA TO BE RELINQUISHED 
ACCESS PROHIBITED 

DR'N BY B. J. K.	R/W MAP NO. F1199-8
C/LC BY J. C.	CONTRACT NO. 07-040234
C/K'D BY A. M.	REL-943
REVISED	

19/7

BOOK 13 PAGE 7

DIST	COUNTY	ROUTE	POST MILES	SHEET NO	TOTAL SHEETS
07	LA	210	6.0/6.2	3	3

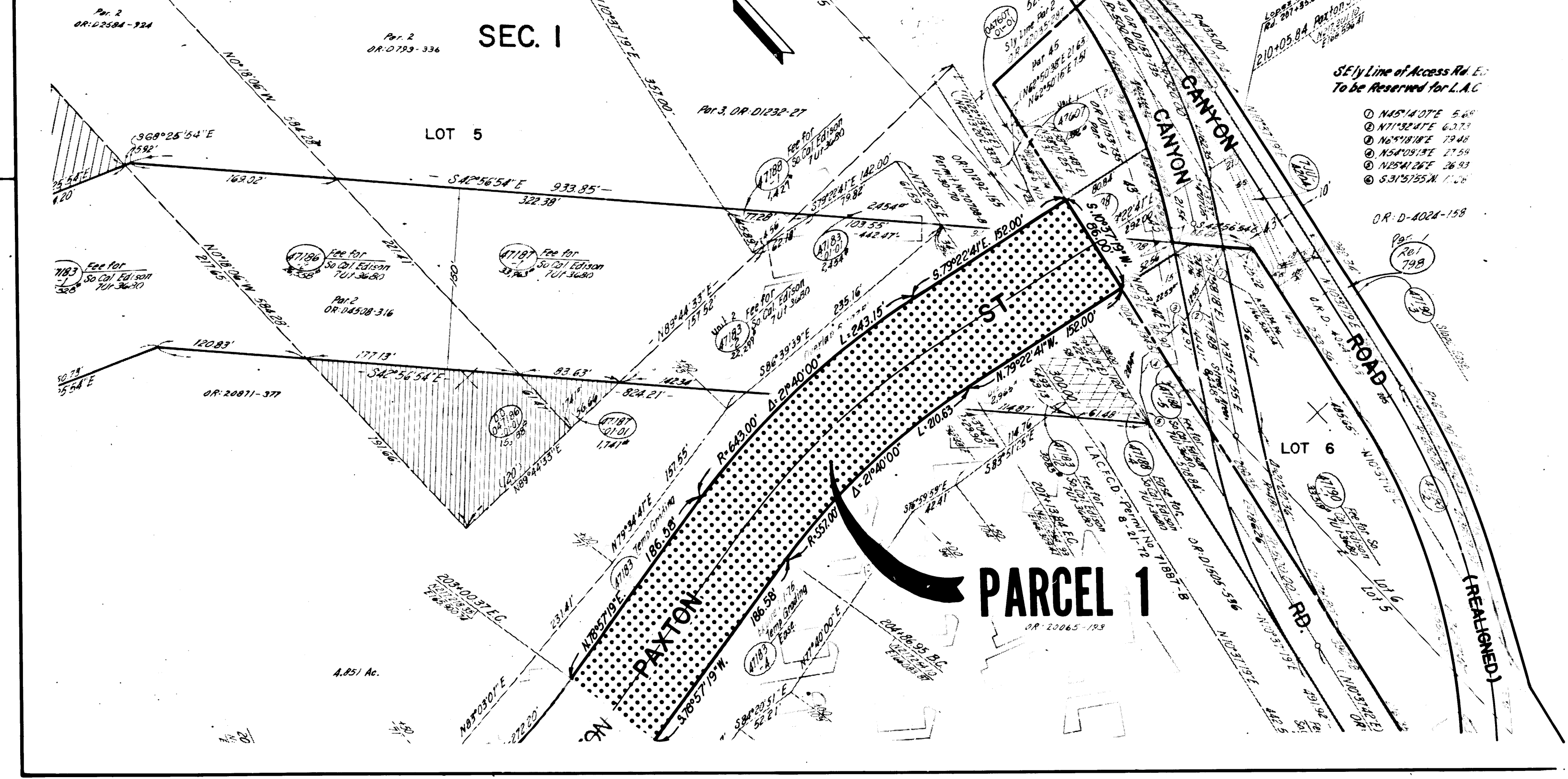
C. Barkan
 SENIOR ENGINEER,
 RIGHT OF WAY ENGINEERING
 REGISTERED CIVIL ENGINEER NO. 14117
 11-13-74
 DATE

Recorded in the Office
 of the County Recorder
 LOS ANGELES COUNTY

S.H.M.B. No. Pg.

FILED WITH LOS ANGELES
 COUNTY RECORDER
 JAN 21 1975

COUNTY OF LOS ANGELES
 FOR CONTINUATION SEE MAP NO. F1199-6
 T.2 N. , R.15 W. , S.B.M
 SEC. I
 CITY OF LOS ANGELES



STATE OF CALIFORNIA
 BUSINESS AND TRANSPORTATION AGENCY
 DEPARTMENT OF TRANSPORTATION

PROPOSED RELINQUISHMENT

0 50 100 150 200

AREA TO BE RELINQUISHED ACCESS PROHIBITED

DR'N BY B. J.K.	R/W MAP NO. F 1199-7
C'LC BY J.C.	CONTRACT NO. 07-048234
C'K'D BY A.M.	REL-943
REVISED	

COUNTY ENGINEER'S COPY