

19/4 2/27/74

BOOK 13 PAGE 8

DIST	COUNTY	ROUTE	POST MILES	SHEET NO.	TOTAL SHEETS
07	LA	210	21.4/22.1	1	5

STATE OF CALIFORNIA
 BUSINESS AND TRANSPORTATION AGENCY
 DEPARTMENT OF TRANSPORTATION

R. De Rosa
 CHIEF, RIGHT OF WAY ENGINEERING
 AND UTILITIES RELOCATION BRANCH
 REGISTERED CIVIL ENGINEER NO. 12767

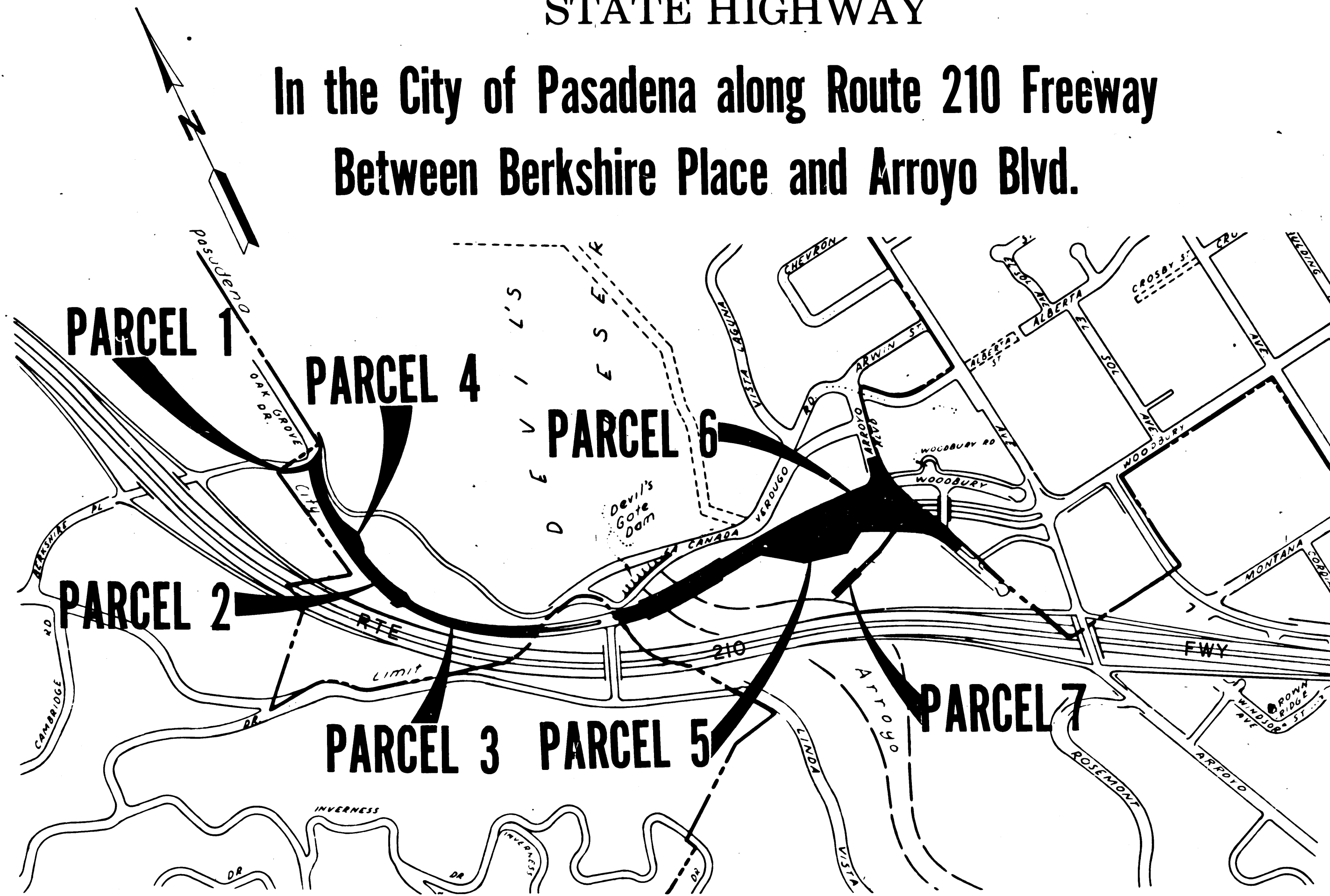
5-8-74
 DATE

RIGHT OF WAY MAPS OF
 STATE HIGHWAY

In the City of Pasadena along Route 210 Freeway
 Between Berkshire Place and Arroyo Blvd.

Recorded in the Office
 of the County Recorder
 LOS ANGELES COUNTY
 S.H.M.B. No. Pg.

1950
 FILED
 AT REQUEST OF
 DEPT. OF PUBLIC WORKS
 FEB. 21, 1975
 27 MIN. 2 PM
 IN BOOK 13
 AT PAGE 8
 OF STATE HIGHWAY MAPS
 LOS ANGELES COUNTY CALIF.
 COUNTY RECORDER
J. L. Henry
 Deputy
F. 1950



INTERSTATE

STATE OF CALIFORNIA
 BUSINESS AND TRANSPORTATION AGENCY
 DEPARTMENT OF TRANSPORTATION

PROPOSED RELINQUISHMENT

0 600 1200 1800 2400

AREA TO BE RELINQUISHED

DR'N BY DF	R/W MAP NO. F-1211-456.8.8
C'LC BY JC	CONTRACT NO. 07-271414
C'K'D BY AM	REL-877
REVISED	

30

COUNTY ENGINEER'S COPY

DIST	COUNTY	ROUTE	POST MILES	SHEET NO.	TOTAL SHEETS
07	LA	210	21.4	2	5

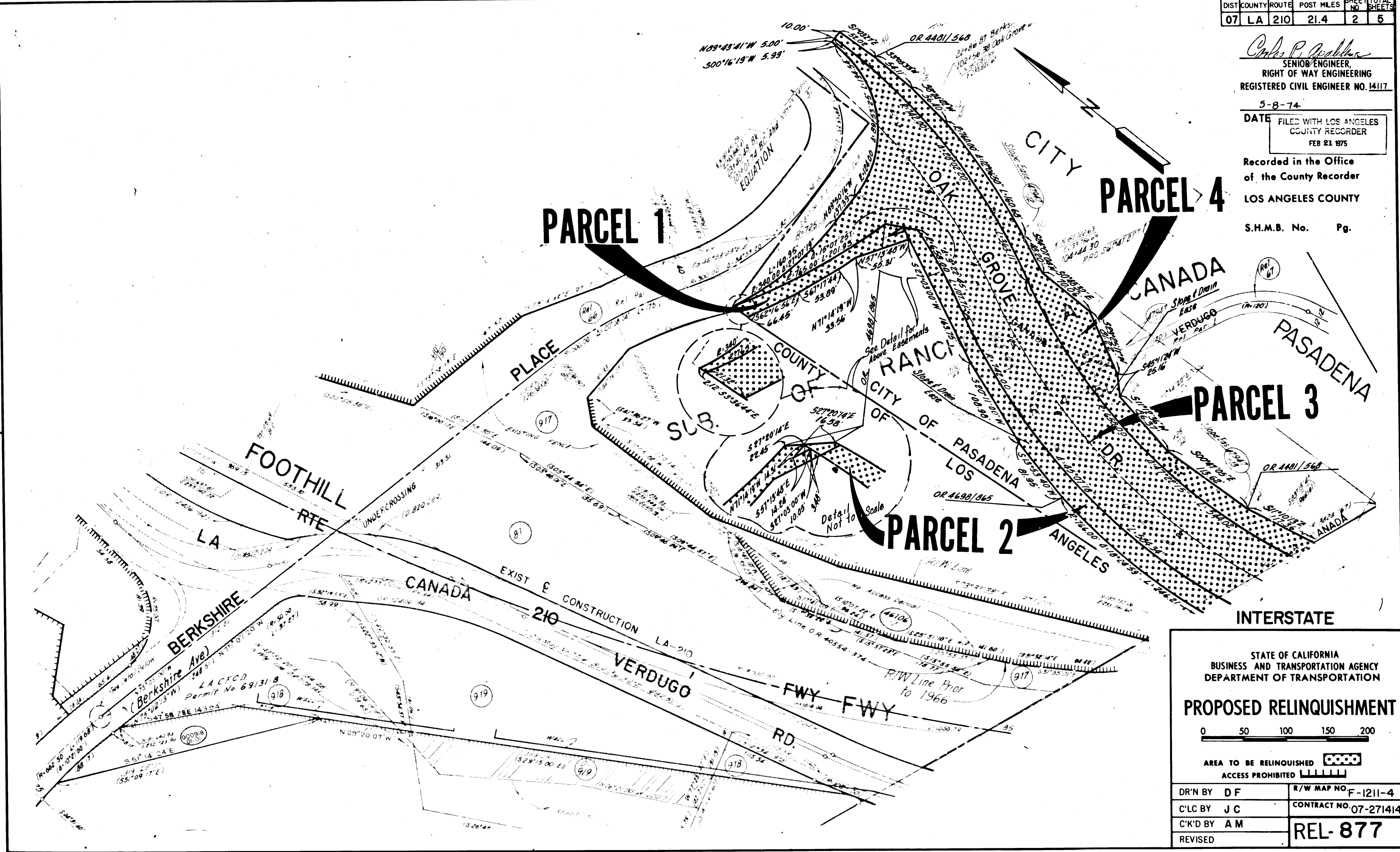
Charles P. Qualtrick
 SENIOR ENGINEER,
 RIGHT OF WAY ENGINEERING
 REGISTERED CIVIL ENGINEER NO. 14117

5-8-74

DATE FILED WITH LOS ANGELES
 COUNTY RECORDER
 FEB 21 1975

Recorded in the Office
 of the County Recorder
 LOS ANGELES COUNTY

S.H.M.B. No. Pg.



STATE OF CALIFORNIA
 BUSINESS AND TRANSPORTATION AGENCY
 DEPARTMENT OF TRANSPORTATION

PROPOSED RELINQUISHMENT

0 50 100 150 200

AREA TO BE RELINQUISHED

ACCESS PROHIBITED

DR'N BY D F	R/W MAP NO. F-1211-4
C'LC BY J C	CONTRACT NO. 07-271414
C'K'D BY A M	REL-877
REVISED	

COUNTY ENGINEER'S COPY

13/10

DIST	COUNTY	ROUTE	POST MILES	SHEET NO	TOTAL SHEETS
07	LA	210	21.6	3	5

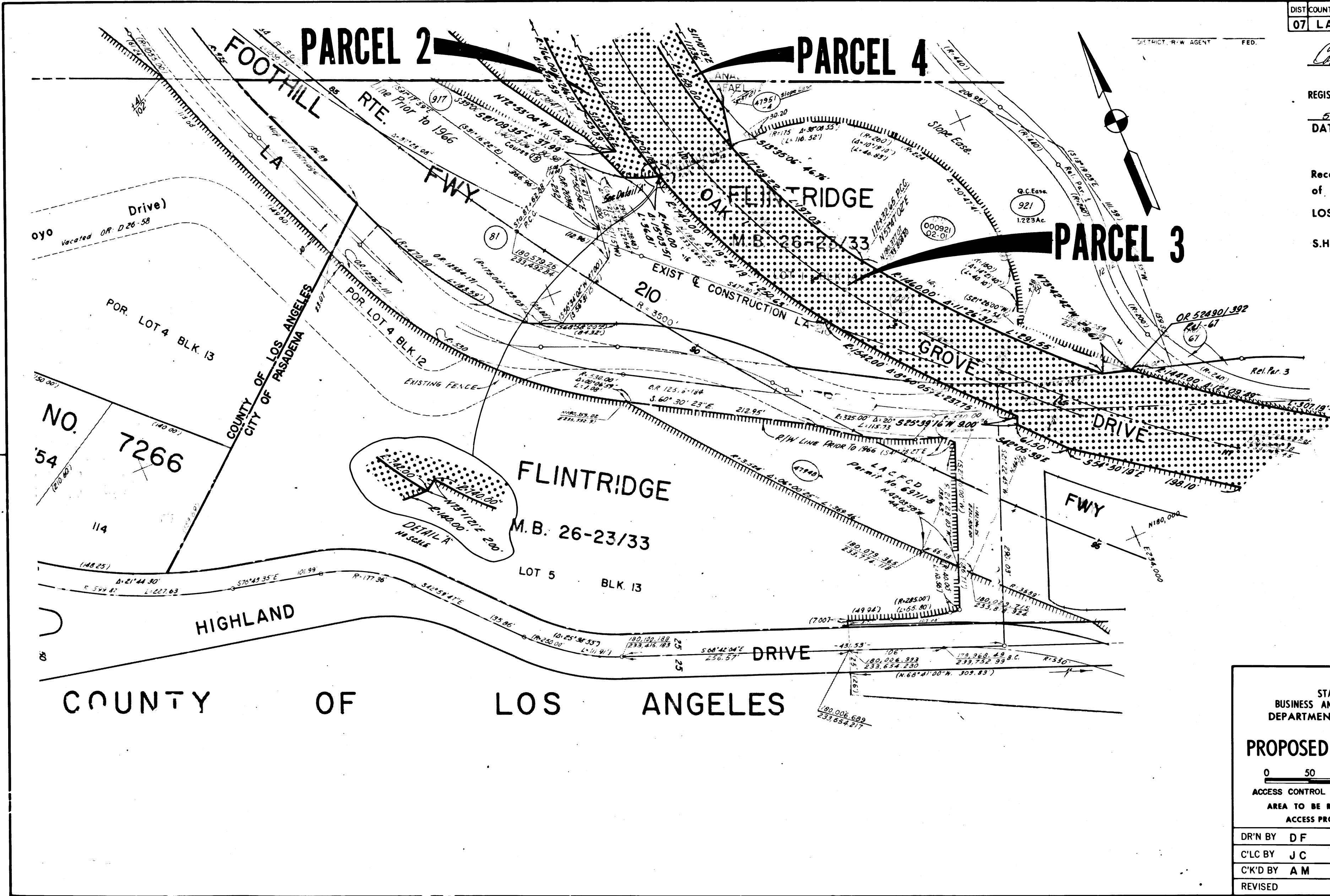
Carl R. Applegate
 SENIOR ENGINEER,
 RIGHT OF WAY ENGINEERING
 REGISTERED CIVIL ENGINEER NO. 14117

5-8-74
 DATE FILED WITH LOS ANGELES
 COUNTY RECORDER
 FEB 21 1975

Recorded in the Office
 of the County Recorder
 LOS ANGELES COUNTY

S.H.M.B. No. Pg.

FOR CONTINUATION SEE MAP NO. F-121



STATE OF CALIFORNIA
 BUSINESS AND TRANSPORTATION AGENCY
 DEPARTMENT OF TRANSPORTATION

PROPOSED RELINQUISHMENT

0 50 100 150 200

ACCESS CONTROL RELINQUISHED

AREA TO BE RELINQUISHED

ACCESS PROHIBITED

DR'N BY	DF	R/W MAP NO.	F-1211-8
C'LC BY	JC	CONTRACT NO.	07-271414
C'K'D BY	AM	REL-877	
REVISED			

COUNTY ENGINEER'S COPY

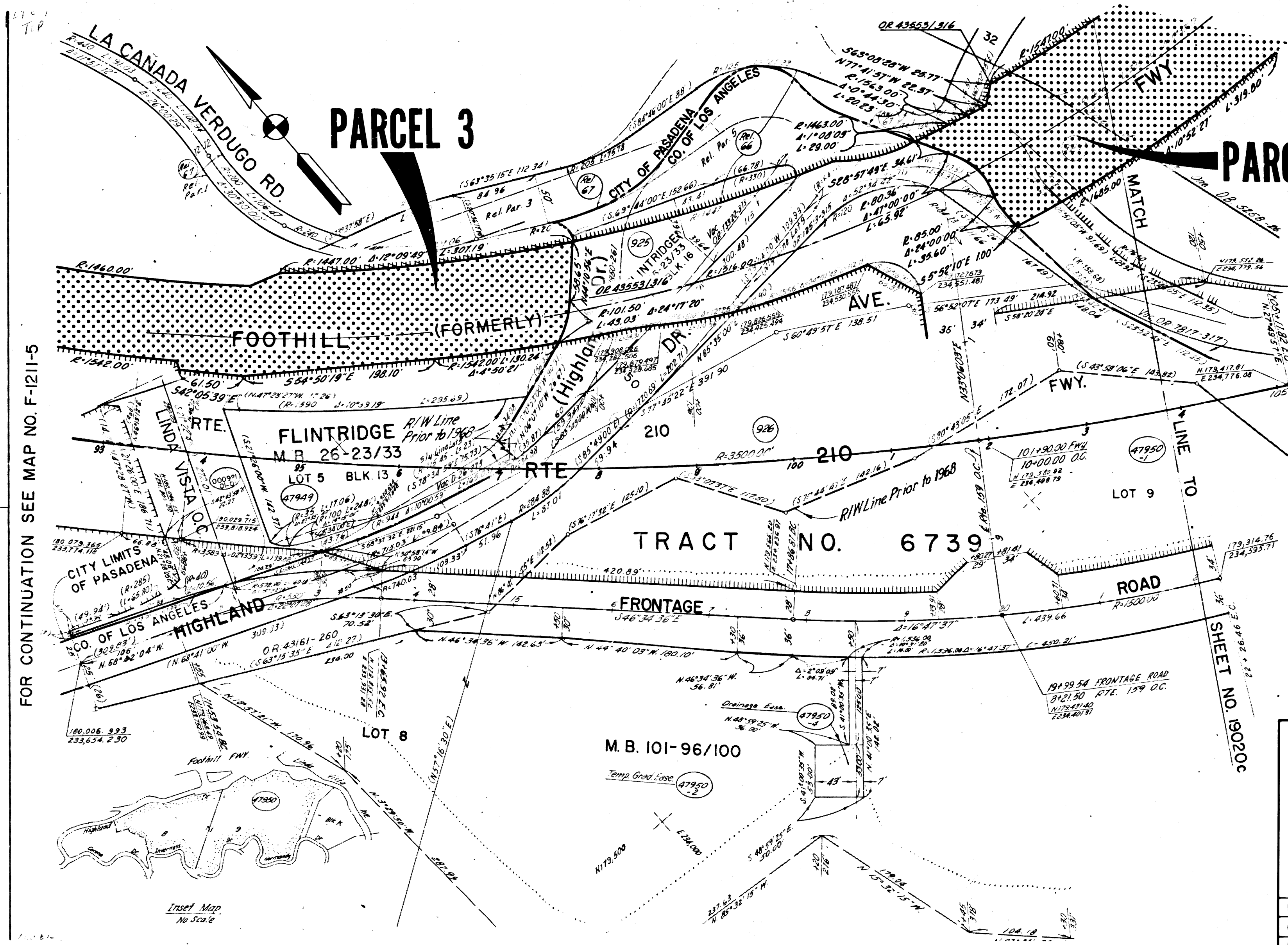
DIST	COUNTY	ROUTE	POST MILES	SHEET NO.	TOTAL SHEETS
07	LA	210	21.8	4	5

Charles J. Walker
 SENIOR ENGINEER,
 RIGHT OF WAY ENGINEERING
 REGISTERED CIVIL ENGINEER NO. 14117

5-8-74
 DATE FILED WITH LOS ANGELES
 COUNTY RECORDER
 FEB 21 1975

Recorded in the Office
 of the County Recorder
 LOS ANGELES COUNTY

S.H.M.B. No. Pg.



FOR CONTINUATION SEE MAP NO. F-1211-5

STATE OF CALIFORNIA
 BUSINESS AND TRANSPORTATION AGENCY
 DEPARTMENT OF TRANSPORTATION

PROPOSED RELINQUISHMENT

0 50 100 150 200

ACCESS CONTROL RELINQUISHED

AREA TO BE RELINQUISHED

ACCESS PROHIBITED

DR'N BY	DF	R/W MAP NO.	F-1211-6
C'LC BY	JC	CONTRACT NO.	07-271414
C'K'D BY	AM	REL- 877	
REVISED			

COUNTY ENGINEER'S COPY

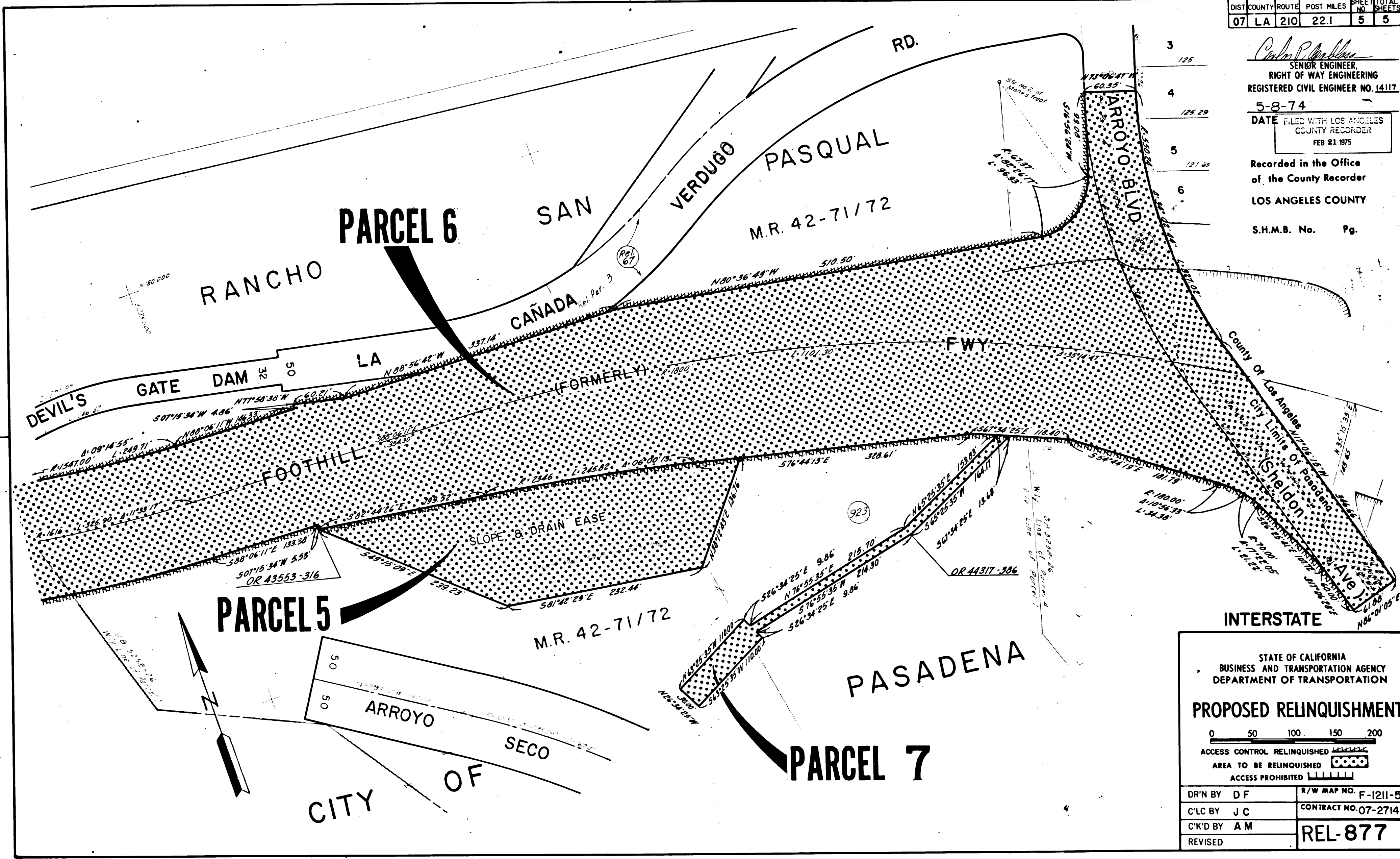
12/72

DIST	COUNTY	ROUTE	POST MILES	SHEET NO.	TOTAL SHEETS
07	LA	210	22.1	5	5

3
125
4
125.29
5
121.60
6

Calvin P. Phillips
SENIOR ENGINEER
RIGHT OF WAY ENGINEERING
REGISTERED CIVIL ENGINEER NO. 14117
5-8-74
DATE FILED WITH LOS ANGELES COUNTY RECORDER
FEB 21 1975

Recorded in the Office
of the County Recorder
LOS ANGELES COUNTY
S.H.M.B. No. Pg.



STATE OF CALIFORNIA
BUSINESS AND TRANSPORTATION AGENCY
DEPARTMENT OF TRANSPORTATION

PROPOSED RELINQUISHMENT

0 50 100 150 200

ACCESS CONTROL RELINQUISHED

AREA TO BE RELINQUISHED

ACCESS PROHIBITED

DR'N BY	DF	R/W MAP NO.	F-1211-5
C'LC BY	JC	CONTRACT NO.	07-271414
C'K'D BY	AM		REL-877
REVISED			

COUNTY ENGINEER'S COPY