

13/15 201

BOOK 13 PAGE 15

STATE OF CALIFORNIA  
BUSINESS AND TRANSPORTATION AGENCY  
DEPARTMENT OF TRANSPORTATION

DIST	COUNTY	ROUTE	POST MILES	SHEET NO.	TOTAL SHEETS
07	LA	118	130/141	1	2

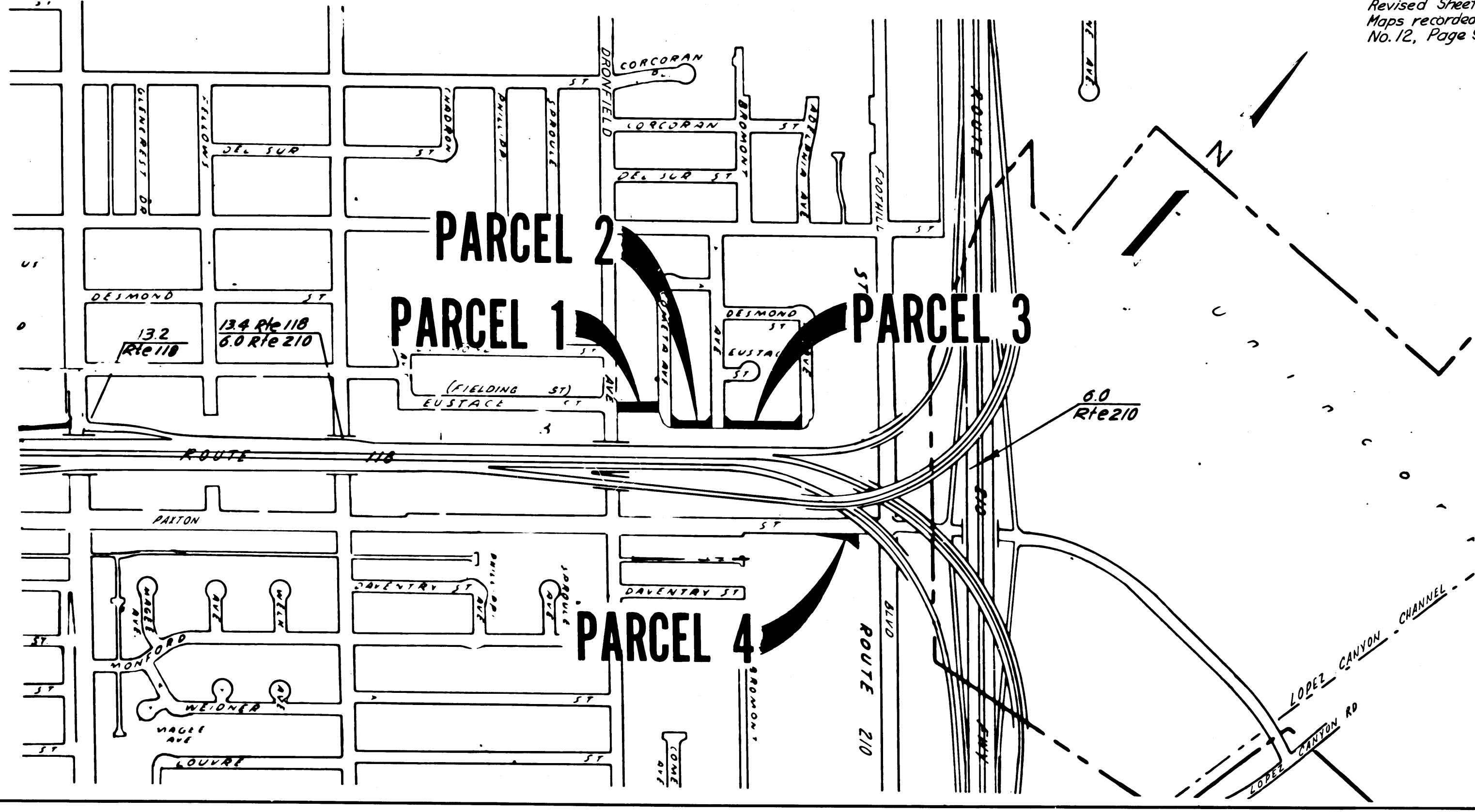
*R. D. Rosa*  
CHIEF, RIGHT OF WAY ENGINEERING AND UTILITIES RELOCATION BRANCH  
REGISTERED CIVIL ENGINEER NO. 12767

10-28-74  
DATE

4465  
FILED  
AT REQUEST OF  
DEPT. OF PUBLIC WORKS  
APR. 4, 1975  
1 MIN. 3 P.M.  
IN BOOK 13  
AT PAGE 15  
OF STATE HIGHWAY MAPS  
LOS ANGELES COUNTY, CALIF.  
COUNTY RECORDER  
*R. D. Rosa*  
Duly  
FREE

RIGHT OF WAY MAPS OF  
STATE HIGHWAY  
In the City of Los Angeles along Route 118 Freeway  
between Dronfield Ave. & Foothill Blvd.

REVISED MAP  
Revised Sheet 1 of 2 of  
Maps recorded in S.H.M.B.  
No. 12, Page 97 Jan 16, 1975



STATE OF CALIFORNIA  
BUSINESS AND TRANSPORTATION AGENCY  
DEPARTMENT OF TRANSPORTATION

**PROPOSED RELINQUISHMENT**

0 600 1200 1800 2400

AREA TO BE RELINQUISHED

DR'N BY DF	R/W MAP NO. F-2140-1
C'LC BY JC	CONTRACT NO. 07-045234
C'K'D BY AM	REL-934
REVISED	

29

COUNTY ENGINEER'S COPY

13/16

BOOK 13 PAGE 16

STATE OF CALIFORNIA  
 BUSINESS AND TRANSPORTATION AGENCY  
 DEPARTMENT OF TRANSPORTATION

3224  
 FILED  
 AT REQUEST OF  
 DEPT. OF PUBLIC WORKS  
 APR. 23, 1975  
 27  
 PAST 2 P.M.  
 IN BOOK 13  
 PAGE 16  
 OF STATE HIGHWAY MAPS  
 LOS ANGELES COUNTY, CALIF.  
 COUNTY RECORDER  
 S. Applegate  
 County Clerk  
 FREE

DIST	COUNTY	ROUTE	POST MILES	SHEET NO.	TOTAL SHEETS
07	LA	5	55.9/63.4	1	5

*R. De Rosa*  
 CHIEF, RIGHT OF WAY ENGINEERING AND  
 UTILITIES RELOCATION BRANCH  
 REGISTERED CIVIL ENGINEER NO. 12767

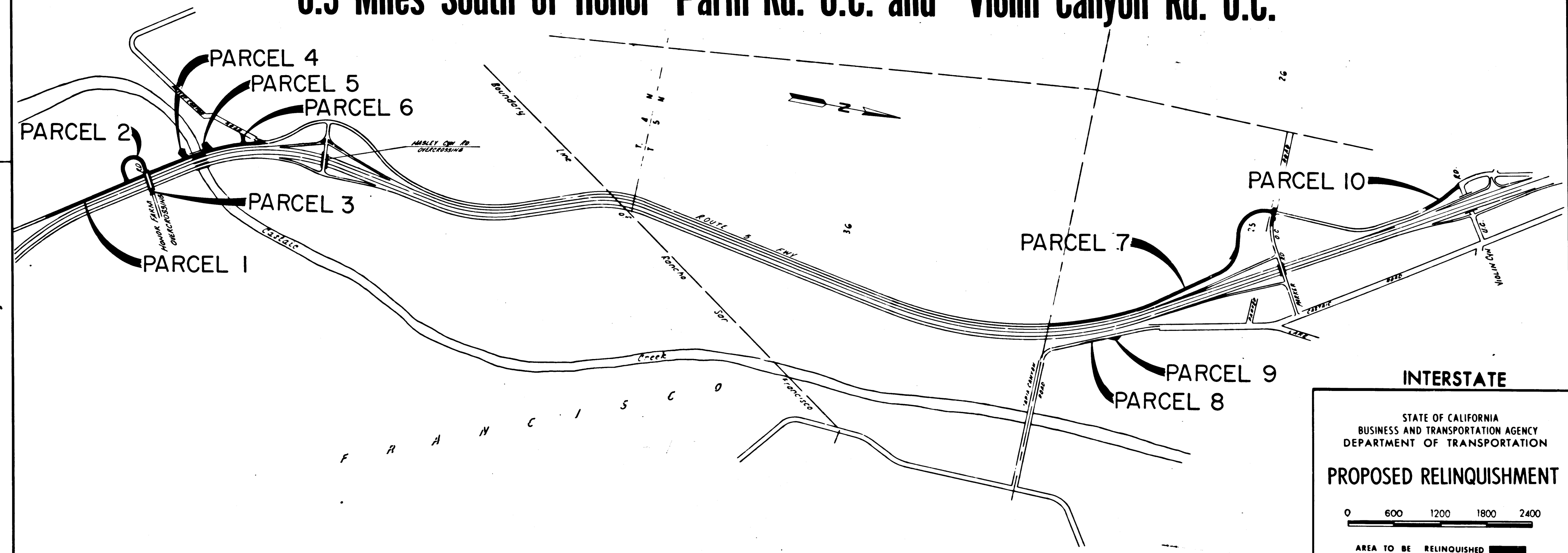
2-20-75  
 DATE

Recorded in the Office  
 of the County Recorder  
 LOS ANGELES COUNTY

S.H.M.B. No. Pg.

RIGHT OF WAY MAPS OF  
 STATE HIGHWAY

In Los Angeles County along Rte 5 Fwy. Between  
 0.3 Miles South of Honor Farm Rd. O.C. and Violin Canyon Rd. U.C.



**INTERSTATE**

STATE OF CALIFORNIA  
 BUSINESS AND TRANSPORTATION AGENCY  
 DEPARTMENT OF TRANSPORTATION

**PROPOSED RELINQUISHMENT**

0 600 1200 1800 2400

AREA TO BE RELINQUISHED

DR'N BY <i>DF</i>	R/W MAP NO <i>F-1309</i>
C'LC BY <i>RO</i>	<i>F-1310, F-1311 &amp; F-1312</i>
C'K'D BY <i>AM</i>	CONTRACT NO. <i>07-034904</i>
REVISED	<b>REL-681</b>

BOOK PAGE  
 13 16

COUNTY ENGINEER'S COPY