

13/46-50 4:11

BOOK 13 PAGE 46

STATE OF CALIFORNIA  
BUSINESS AND TRANSPORTATION AGENCY  
DEPARTMENT OF TRANSPORTATION

4088  
FILED  
AT REQUEST OF  
DEPT. OF PUBLIC WORKS  
MAY 29 1975  
11 4 P.M.  
BY BOOK 13  
AT PAGE 46  
OF STATE HIGHWAY MAPS  
LOS ANGELES COUNTY, CALIF.  
COUNTY RECORDER  
2. [Signature]  
Duty FREE

DIST	COUNTY	ROUTE	POST MILES	SHEET NO.	TOTAL SHEETS
07	LA	5	210	1	5

*R. J. DeBrosa*  
CHIEF, RIGHT OF WAY ENGINEERING AND  
UTILITIES RELOCATION BRANCH  
REGISTERED CIVIL ENGINEER NO. 12767

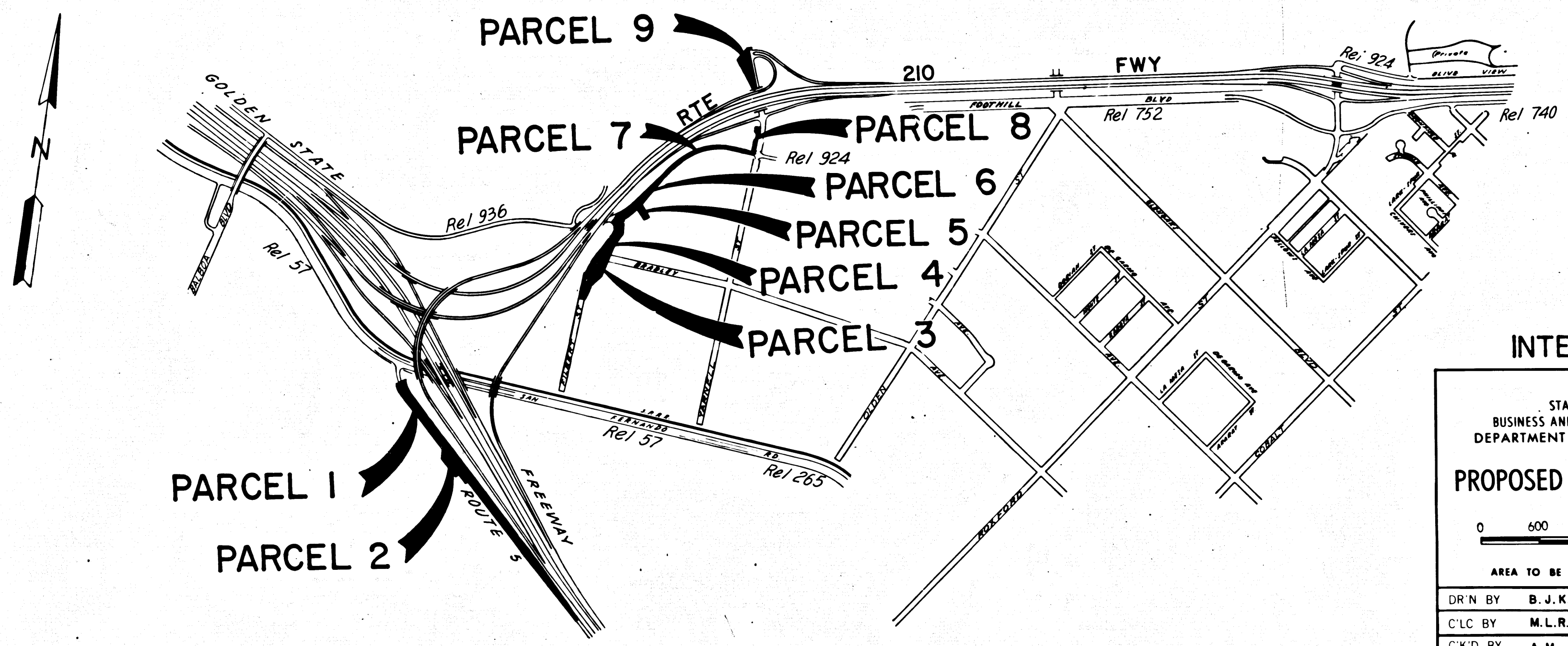
4-7-75  
DATE

Recorded in the Office  
of the County Recorder  
LOS ANGELES COUNTY

S.H.M.B. No. Pg.

RIGHT OF WAY MAPS OF  
STATE HIGHWAY

In the City of Los Angeles along Rte. 5 between Roxford St. and  
San Fernando Rd. and along Rte. 210 between Rte. 5 and Yarnell St.



INTERSTATE

STATE OF CALIFORNIA  
BUSINESS AND TRANSPORTATION AGENCY  
DEPARTMENT OF TRANSPORTATION

**PROPOSED RELINQUISHMENT**

0 600 1200 1800 2400

AREA TO BE RELINQUISHED

DR'N BY	B. J. K.	R/W MAP NO.	F1195 & F1902
C'LC BY	M. L. R.	CONTRACT NO.	07-287834
C'K'D BY	A. M.	<b>REL- 824</b>	
REVISED			

DIST	COUNTY	ROUTE	POST MILES	SHEET NO	TOTAL SHEETS
07	LA	5	43.9	2	5

FILED WITH LOS ANGELES COUNTY RECORDER  
MAY 29 1975

*Charles B. Analline*  
SENIOR ENGINEER,  
RIGHT OF WAY ENGINEERING  
REGISTERED CIVIL ENGINEER NO. 14117

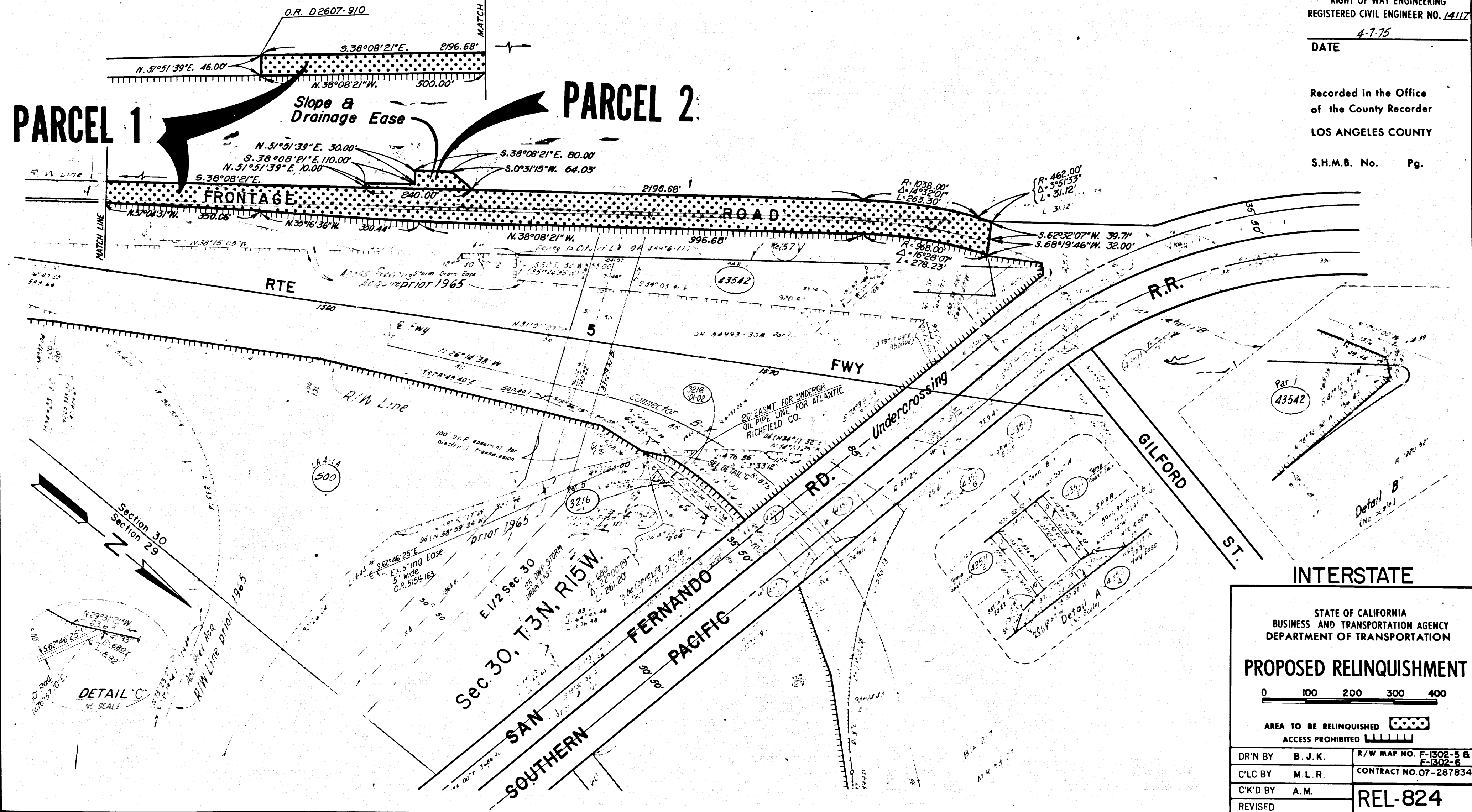
4-7-75

DATE

Recorded in the Office  
of the County Recorder  
LOS ANGELES COUNTY

S.H.M.B. No. Pg.

# CITY OF LOS ANGELES



STATE OF CALIFORNIA  
BUSINESS AND TRANSPORTATION AGENCY  
DEPARTMENT OF TRANSPORTATION

## PROPOSED RELINQUISHMENT

0 100 200 300 400

AREA TO BE RELINQUISHED [Pattern]

ACCESS PROHIBITED [Pattern]

DR'N BY	B. J. K.	R/W MAP NO. F-1302-5 B
C'LC BY	M. L. R.	F-1302-5
C'K'D BY	A. M.	CONTRACT NO. 07-287834
REVISED		REL-824

COUNTY ENGINEER'S COPY

DIST	COUNTY	ROUTE	POST MILES	SHEET NO.	TOTAL SHEETS
07	LA	210	0.5	3	5

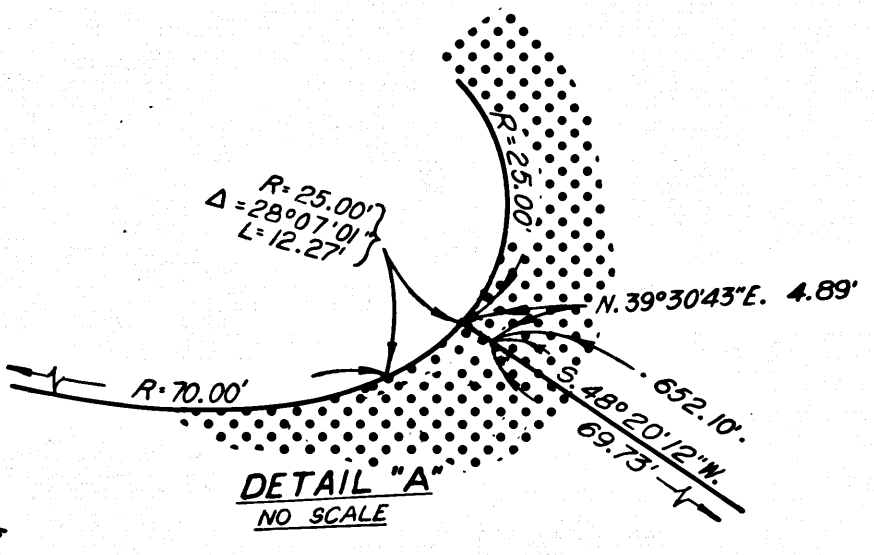
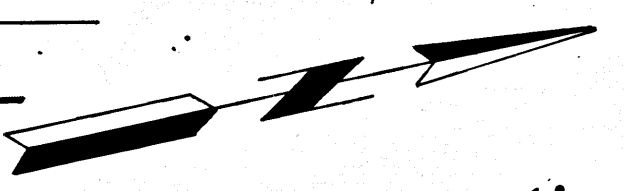
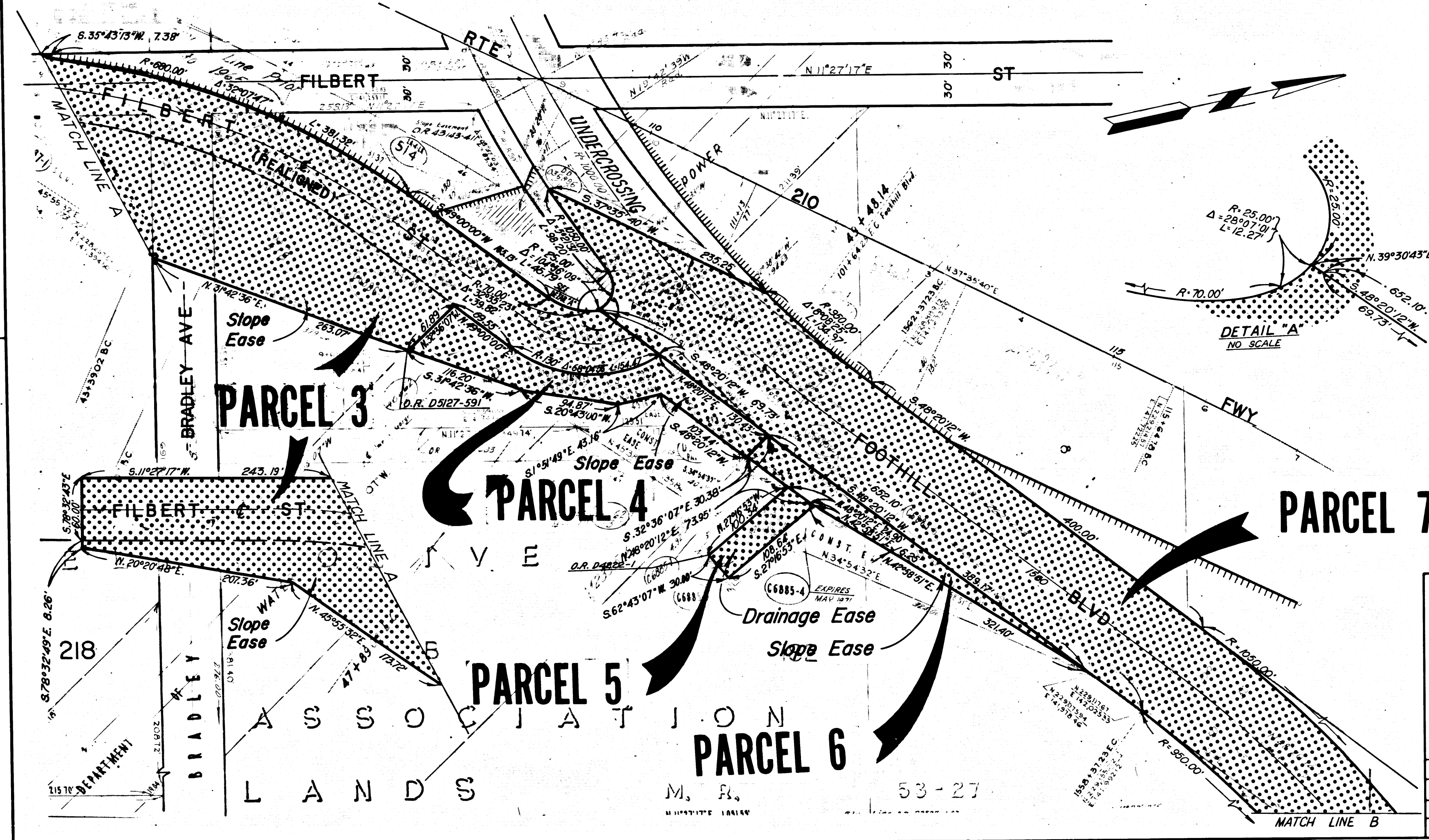
*Carl P. Beckman*  
 SENIOR ENGINEER,  
 RIGHT OF WAY ENGINEERING  
 REGISTERED CIVIL ENGINEER NO. 4117

4-7-75  
 DATE

Recorded in the Office  
 of the County Recorder  
 LOS ANGELES COUNTY  
 S.H.M.B. No. Pg.

CITY OF LOS ANGELES

FILED WITH LOS ANGELES  
 COUNTY RECORDER  
 MAY 29 1975



INTERSTATE

STATE OF CALIFORNIA  
 BUSINESS AND TRANSPORTATION AGENCY  
 DEPARTMENT OF TRANSPORTATION

PROPOSED RELINQUISHMENT

0 50 100 150 200

AREA TO BE RELINQUISHED ACCESS PROHIBITED

DR'N BY B. J. K.	R/W MAP NO. F1195-2
C/LC BY M. L. R.	CONTRACT NO. 07-287834
C/K'D BY A. M.	REL-824
REVISED	

COUNTY ENGINEER'S COPY

DIST	COUNTY	ROUTE	POST MILES	SHEET NO	TOTAL SHEETS
07	LA	210	0.7	4	5

CITY OF LOS ANGELES

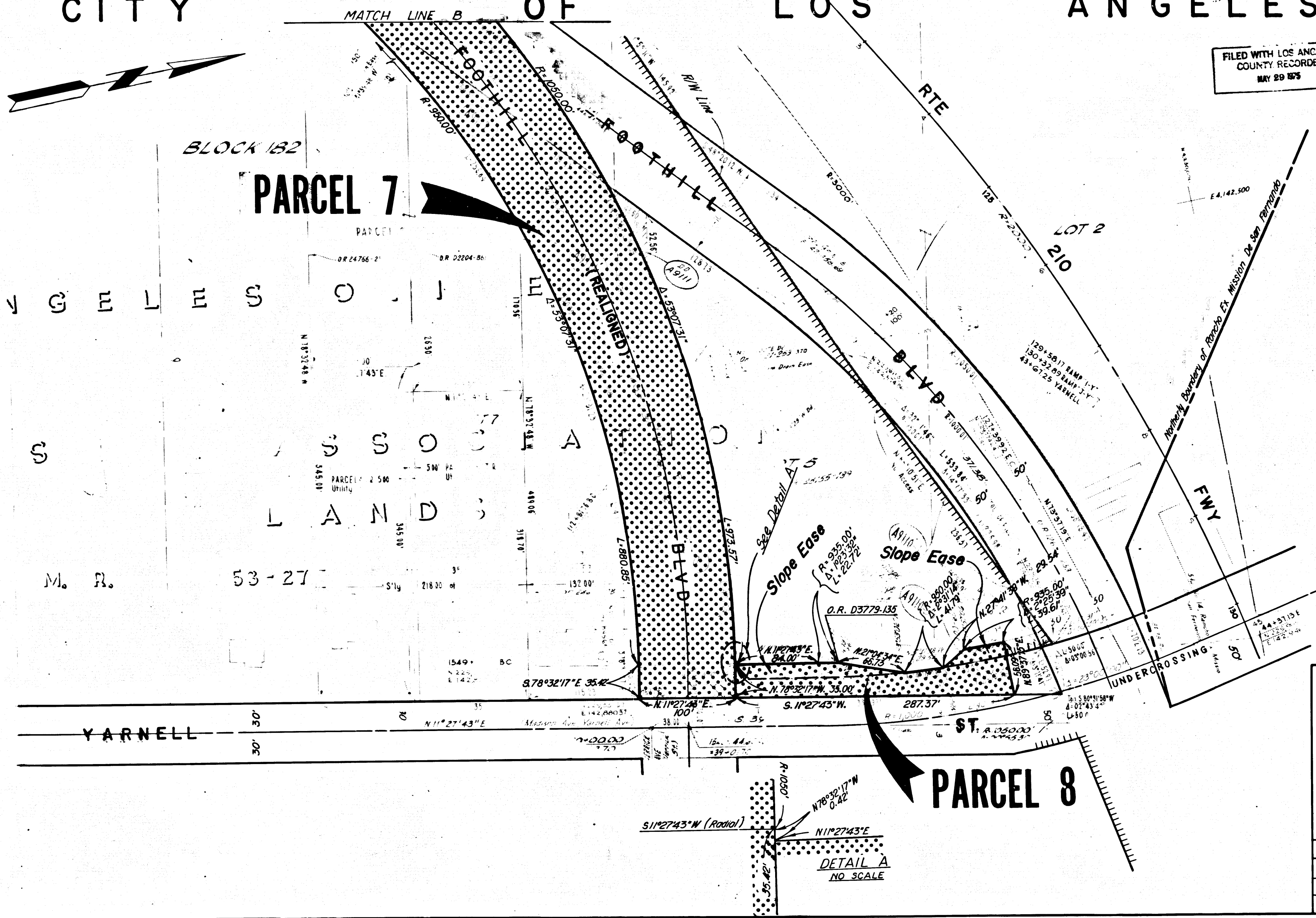
FILED WITH LOS ANGELES COUNTY RECORDER  
MAY 29 1975

*Carlos B. Gallardo*  
SENIOR ENGINEER  
RIGHT OF WAY ENGINEERING  
REGISTERED CIVIL ENGINEER NO. 4117

4-7-75  
DATE

Recorded in the Office of the County Recorder  
LOS ANGELES COUNTY

S.H.M.B. No. Pg.



STATE OF CALIFORNIA  
BUSINESS AND TRANSPORTATION AGENCY  
DEPARTMENT OF TRANSPORTATION

**PROPOSED RELINQUISHMENT**

0 50 100 150 200

AREA TO BE RELINQUISHED ACCESS PROHIBITED

DR'N BY	B. J. K.	R/W MAP NO.	F1195-3
C'LC BY	M. L. R.	CONTRACT NO.	07-287834
C'K'D BY	A. M.		
REVISED			REL-824

COUNTY ENGINEER'S COPY

DIST	COUNTY	ROUTE	POST MILES	SHEET NO.	TOTAL SHEETS
07	LA	210	0.9	5	5

FILED WITH LOS ANGELES COUNTY RECORDER  
MAY 29 1975

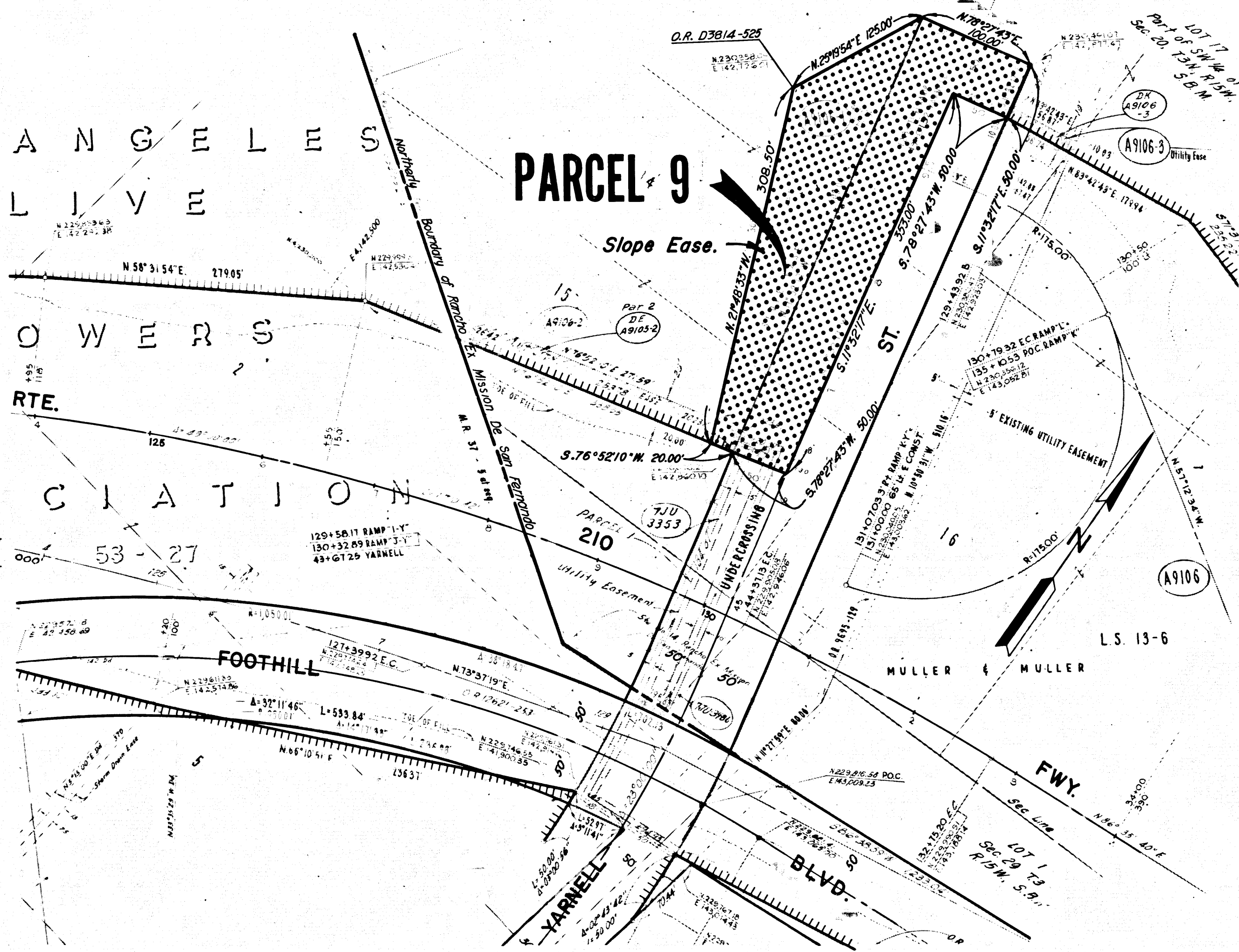
*Charles B. Spallone*  
SENIOR ENGINEER,  
RIGHT OF WAY ENGINEERING  
REGISTERED CIVIL ENGINEER NO. 14117

4-7-75  
DATE

Recorded in the Office  
of the County Recorder  
LOS ANGELES COUNTY

S.H.M.B. No. Pg.

# CITY OF LOS ANGELES



## INTERSTATE

STATE OF CALIFORNIA  
BUSINESS AND TRANSPORTATION AGENCY  
DEPARTMENT OF TRANSPORTATION

### PROPOSED RELINQUISHMENT



AREA TO BE RELINQUISHED ACCESS PROHIBITED

DR'N BY	B. J. K.	R/W MAP NO.	FI95-4
C'LC BY	M. L. R.	CONTRACT NO.	07-287834
C'K'D BY	A. M.	REL-	824
REVISED			

COUNTY ENGINEER'S COPY