

DN 13 29 51

BOOK 13, PAGE 51 47 pair 1/2

STATE OF CALIFORNIA
 BUSINESS AND TRANSPORTATION AGENCY
 DEPARTMENT OF TRANSPORTATION

DIST	COUNTY	ROUTE	POST MILES	SHEET NO.	TOTAL SHEETS
07	LA	14	266/270	1	2

3166

FILED
 AT REQUEST OF
 DEPT. OF PUBLIC WORKS
 JULY 22, 1975
 4:17 PM

William C. Rorie
 CHIEF, RIGHT OF WAY ENGINEER AND
 UTILITIES RELOCATION BRANCH
 REGISTERED CIVIL ENGINEER NO. 9790

July 15, 1975
 DATE

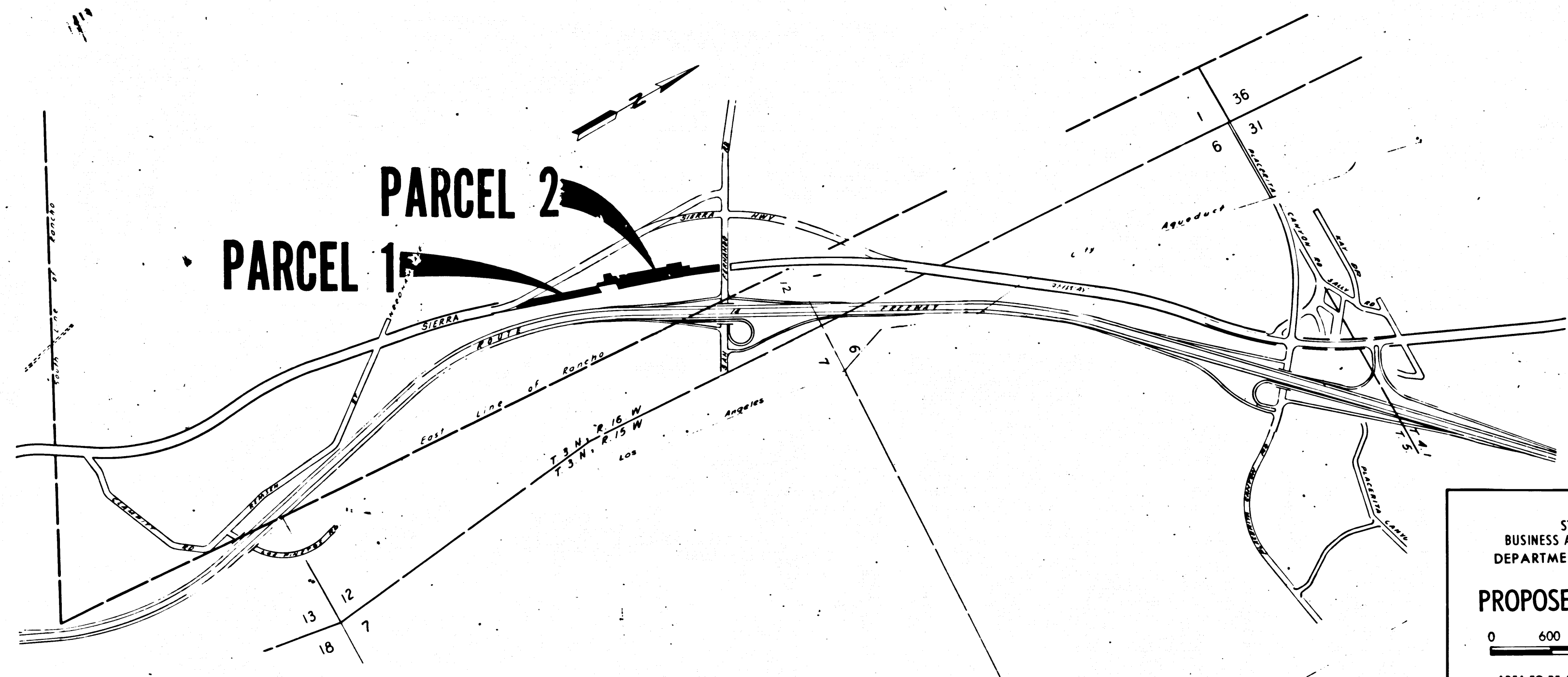
BOOK 13
 PAGE 51-52
 OF STATE MAPS
 LOS ANGELES COUNTY CALIF.
 COUNTY RECORDER
 John Garcia
 Deputy REC

Recorded in the Office
 of the County Recorder
 LOS ANGELES COUNTY

S.H.M.B. No. Pg.

RIGHT OF WAY MAPS OF
 STATE HIGHWAY

In the County of Los Angeles along Sierra Highway
 from 0.4 Miles So. of San Fernando Rd. to San Fernando Rd.



STATE OF CALIFORNIA
 BUSINESS AND TRANSPORTATION AGENCY
 DEPARTMENT OF TRANSPORTATION

PROPOSED ABANDONMENT

0 600 1200 1800 2400
 AREA TO BE ABANDONED

DR'N BY DF	R/W MAP NO. F-1055-8
C'LC BY JC	CONTRACT NO. 07-295804
C'K'D BY AM	ABD- 93
REVISED	

24

COUNTY ENGINEER'S COPY

2x 13 pg 52

COUNTY OF LOS ANGELES

FILED WITH LOS ANGELES COUNTY RECORDER JUL 22 1975

DIST	COUNTY	ROUTE	POST MILES	SHEET NO.	TOTAL SHEETS
07	LA	14	26.6/27.2	2	2

R.W. Williams
 SENIOR ENGINEER,
 RIGHT OF WAY ENGINEERING
 REGISTERED CIVIL ENGINEER NO. 6079

July 15, 1975
 DATE

Recorded in the Office
 of the County Recorder
 LOS ANGELES COUNTY

S.H.M.B. No. Pg.

PARCEL 1

PARCEL 2

(NEW) SAN FERNANDO ROAD

SIERRA

HIGHWAY

CISCO

ROUTE 14 FREEWAY

LOT 1 OF SEC. 12

LOT 33

DETAIL B Not to Scale

STATE OF CALIFORNIA
 BUSINESS AND TRANSPORTATION AGENCY
 DEPARTMENT OF TRANSPORTATION

PROPOSED ABANDONMENT

0 50 100 150 200

AREA TO BE ABANDONED 
 ACCESS PROHIBITED 

DR'N BY <i>DF</i>	R/W MAP NO. <i>F1055-B</i>
C'LC BY <i>J.C.</i>	CONTRACT NO. <i>07-295804</i>
C'K'D BY <i>AM</i>	ABD- 93
REVISED	

COUNTY ENGINEER'S COPY