

BK 13 PG 53

BOOK 13 PAGE 53

STATE OF CALIFORNIA
BUSINESS AND TRANSPORTATION AGENCY
DEPARTMENT OF TRANSPORTATION

DIST.	COUNTY	ROUTE	POST MILES	SHEET NO.	TOTAL SHEETS
07	LA	138	4369/44.19	1	3

R. De Rosa
CHIEF, RIGHT OF WAY ENGINEERING
AND UTILITIES RELOCATION BRANCH
REGISTERED CIVIL ENGINEER NO. 12767

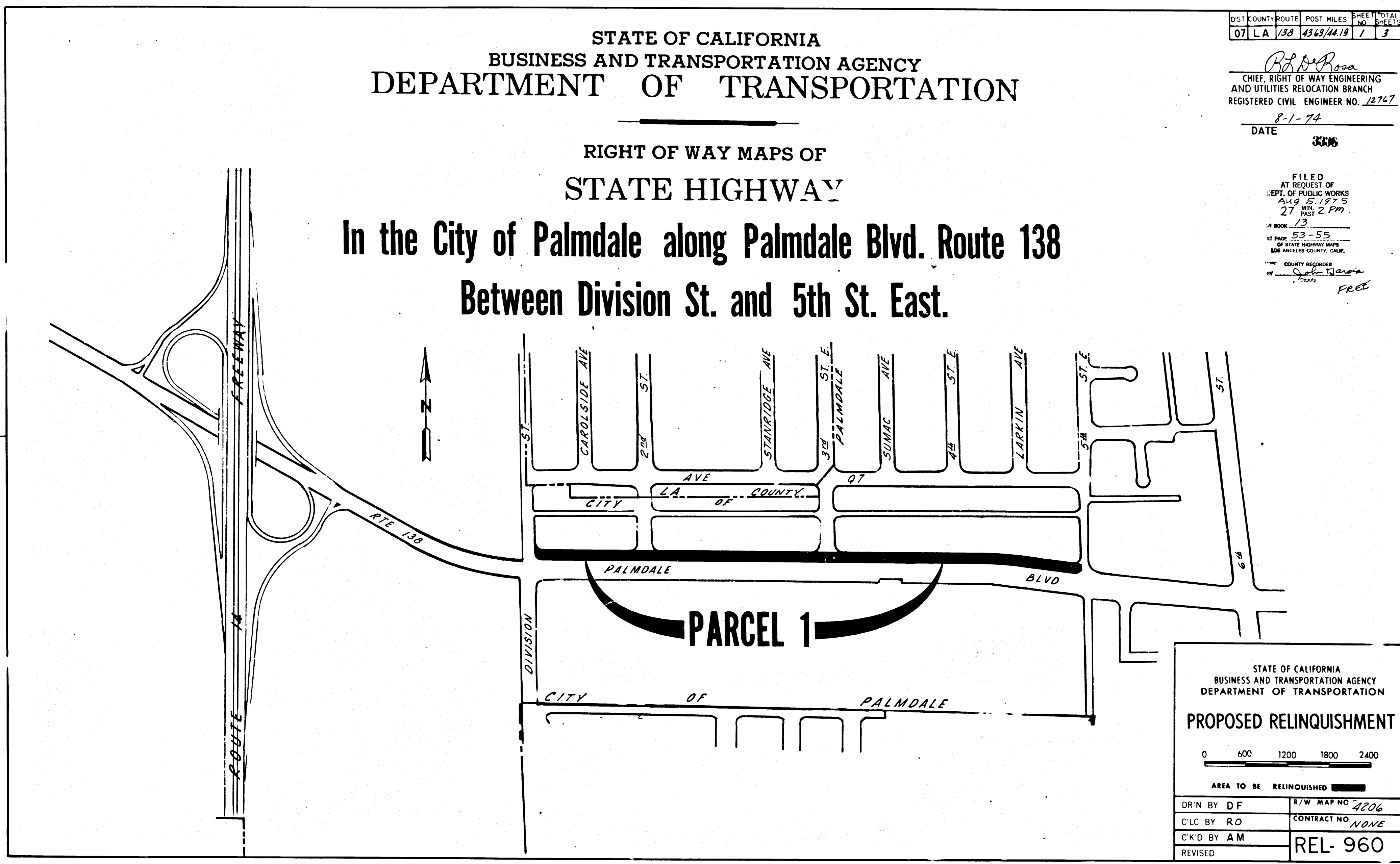
DATE 8-1-74

3336

RIGHT OF WAY MAPS OF
STATE HIGHWAY

In the City of Palmdale along Palmdale Blvd. Route 138
Between Division St. and 5th St. East.

FILED
AT REQUEST OF
DEPT. OF PUBLIC WORKS
Aug 5, 1975
27 MIN.
27 PAST 2 PM
BOOK 13
AT PAGE 53-55
OF STATE HIGHWAY MAPS
LOS ANGELES COUNTY, CALIF.
COUNTY RECORDER
John W. Davis
Deputy
FREE



STATE OF CALIFORNIA
BUSINESS AND TRANSPORTATION AGENCY
DEPARTMENT OF TRANSPORTATION

PROPOSED RELINQUISHMENT

0 600 1200 1800 2400

AREA TO BE RELINQUISHED

DR'N BY DF	R/W MAP NO 4206
C'LC BY RO	CONTRACT NO. NONE
C'K'D BY AM	REL- 960
REVISED	

90

COUNTY ENGINEER'S COPY

Pr 13 pg 54

BOOK 13 PAGE 54

DIST	COUNTY	ROUTE	POST MILES	SHEET NO.	TOTAL SHEETS
07	LA	138	43.69/44.19	2	3

CB [Signature]
 SENIOR ENGINEER,
 RIGHT OF WAY ENGINEERING
 REGISTERED CIVIL ENGINEER NO. 12117

8-1-74
 DATE

FILED WITH LOS ANGELES
 COUNTY RECORDER
 AUG 5 1975

CITY OF PALMDALE



2nd ST. EAST

PARCEL 1

3rd ST. EAST



ST.

117.00'

R=27.00'
 Δ=89°12'39"
 L=42.09'

PALMDALE

(LA-138)

BLVD

DIVISION

OR D411-579
 S.W. Quarter of Sect. 26

STATE OF CALIFORNIA
 BUSINESS AND TRANSPORTATION AGENCY
 DEPARTMENT OF TRANSPORTATION

PROPOSED RELINQUISHMENT



AREA TO BE RELINQUISHED [Stippled pattern]
 ACCESS PROHIBITED [Hatched pattern]

DR'N BY <i>D.F.</i>	R/W MAP NO. <i>4206</i>
C/LC BY <i>R.O.</i>	CONTRACT NO. <i>None</i>
C/K'D BY <i>A.M.</i>	REL- 960
REVISED	

COUNTY ENGINEER'S COPY

BK 13 pg 55

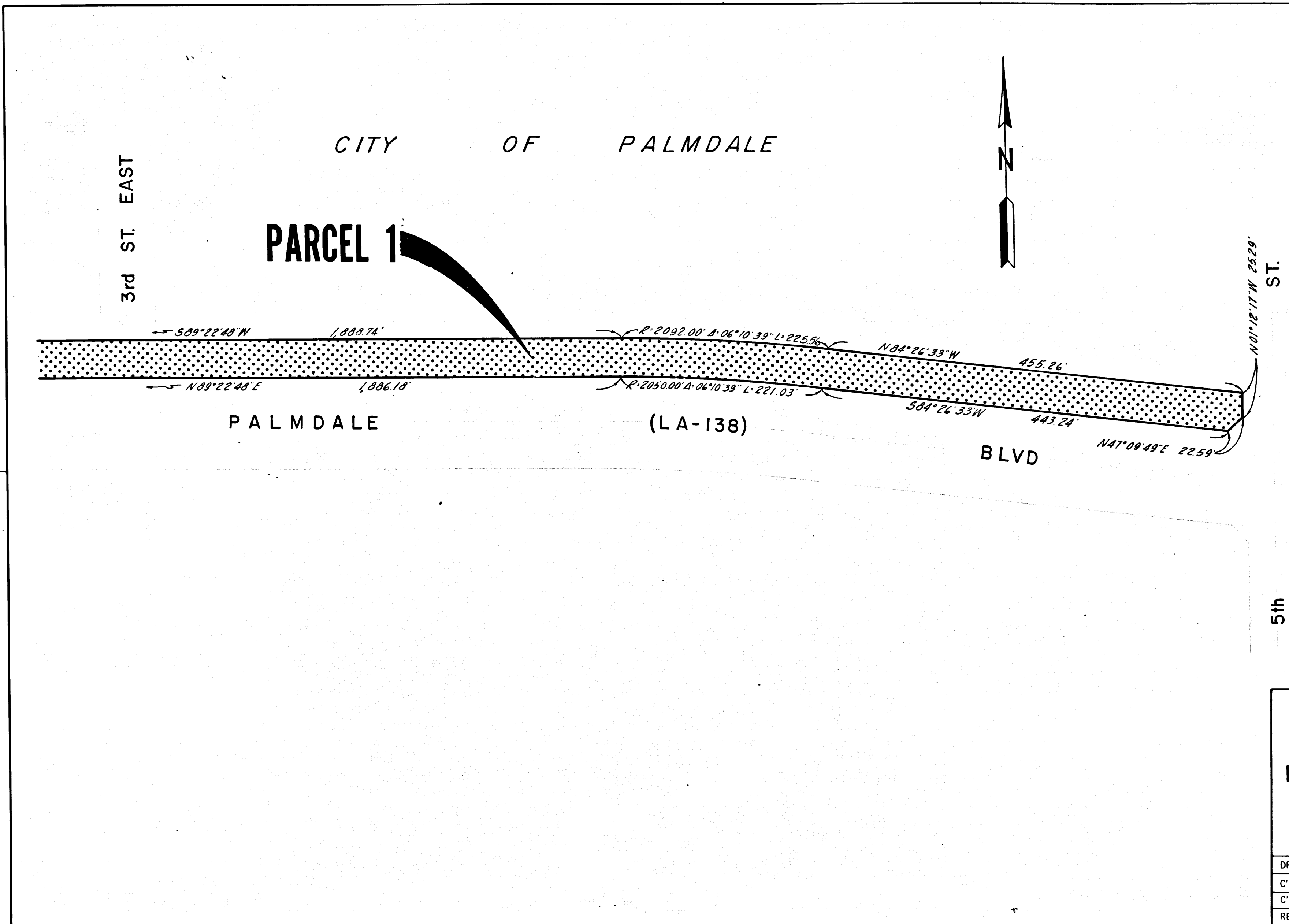
BOOK 13 PAGE 55

DIST	COUNTY	ROUTE	POST MILES	SHEET NO.	TOTAL SHEETS
07	LA	138	43.69/44.19	3	3

C.B. Anderson
 SENIOR ENGINEER
 RIGHT OF WAY ENGINEERING
 REGISTERED CIVIL ENGINEER NO. 14117

8-1-74
 DATE

FILED WITH LOS ANGELES
 COUNTY RECORDS
 AUG 6 1975



STATE OF CALIFORNIA
 BUSINESS AND TRANSPORTATION AGENCY
 DEPARTMENT OF TRANSPORTATION

PROPOSED RELINQUISHMENT

0 50 100 150 200

AREA TO BE RELINQUISHED

ACCESS PROHIBITED

DR'N BY <i>D.F.</i>	R/W MAP NO. <i>4206</i>
C'LC BY <i>R.O.</i>	CONTRACT NO. <i>None</i>
C'K'D BY <i>A.M.</i>	REL-960
REVISED	

COUNTY ENGINEER'S COPY