

DIST	COUNTY	ROUTE	POST MILES	SHEET NO.	TOTAL SHEETS
07	LA	210	6.0/6.2	3	3

R. W. Felton
 SENIOR ENGINEER
 RIGHT OF WAY ENGINEERING
 REGISTERED CIVIL ENGINEER NO. 6079

Sept 3, 1975
 DATE

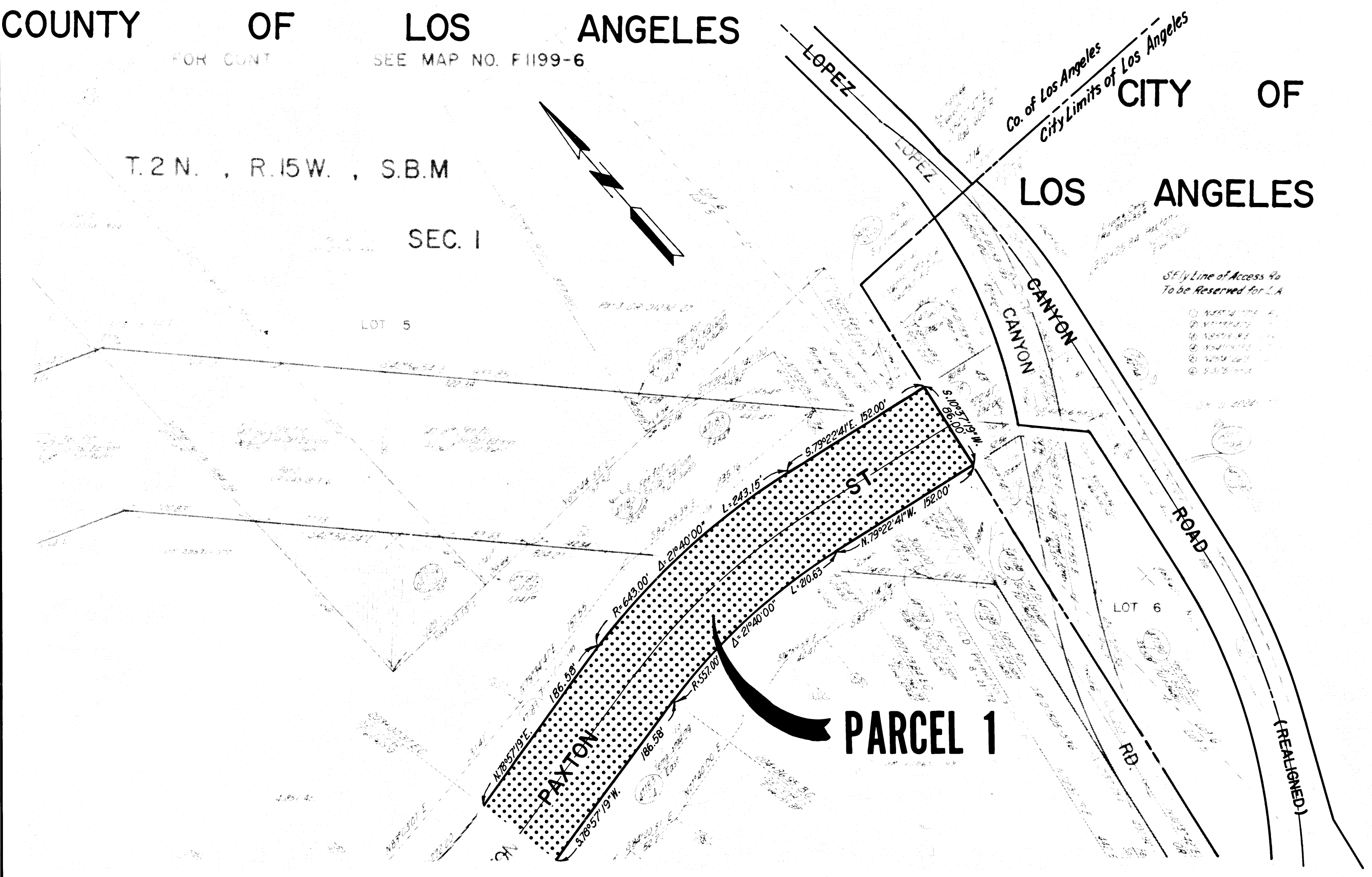
Recorded in the Office
 of the County Recorder
 LOS ANGELES COUNTY

S.H.M.B. No. Pg.

COUNTY OF LOS ANGELES CITY OF LOS ANGELES

FOR CONT. SEE MAP NO. F1199-6

T. 2 N. , R. 15 W. , S.B.M
 SEC. 1



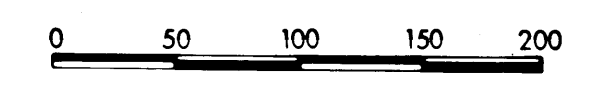
5' W. Line of Access 40
 To be Reserved for LA

- ① 100' x 100' x 100'
- ② 100' x 100' x 100'
- ③ 100' x 100' x 100'
- ④ 100' x 100' x 100'
- ⑤ 100' x 100' x 100'
- ⑥ 100' x 100' x 100'

FILED WITH LOS ANGELES
 COUNTY RECORDER
 SEP 15 1975

STATE OF CALIFORNIA
 BUSINESS AND TRANSPORTATION AGENCY
 DEPARTMENT OF TRANSPORTATION

PROPOSED RELINQUISHMENT



AREA TO BE RELINQUISHED [Dotted Pattern]
 ACCESS PROHIBITED [Hatched Pattern]

DR'N BY B. J. K.	R/W MAP NO. F 1199-7
C/LC BY J. C.	CONTRACT NO. 07-045234
C/K'D BY A. M.	REL-943
REVISED	