

1:47 PM 13/59

BOOK 13 PAGE 59

DIST	COUNTY	ROUTE	POST MILES	SHEET NO.	TOTAL SHEETS
07	LA	605	3.75	1	1

William E. Rende
 CHIEF, RIGHT OF WAY ENGINEERING &
 UTILITIES RELOCATION BRANCH
 REGISTERED CIVIL ENGINEER NO. 9790
 July 8, 1975
 DATE

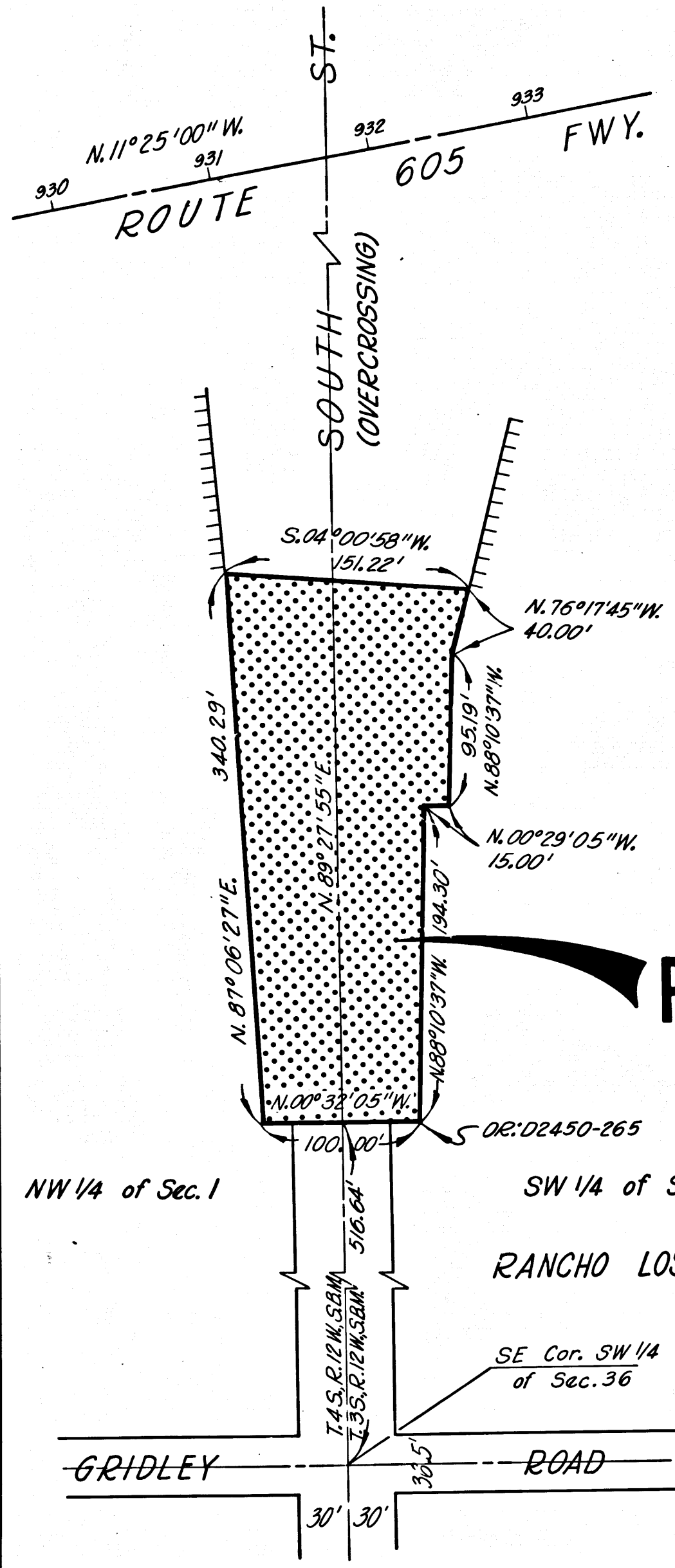
Recorded in the Office
 of the County Recorder
 LOS ANGELES COUNTY
 S.H.M.B. No. Pg.
 DATE 3466

FILED
 AT REQUEST OF
 DEPT. OF PUBLIC WORKS
 OCT. 24, 1975
 47 MIN. PAST 1 P.M.
 IN BOOK 13
 AT PAGE 59
 OF STATE HIGHWAY MAPS
 FOR LOS ANGELES COUNTY, CALIF.
 COUNTY RECORDER
 D. J. [Signature]
 Deputy

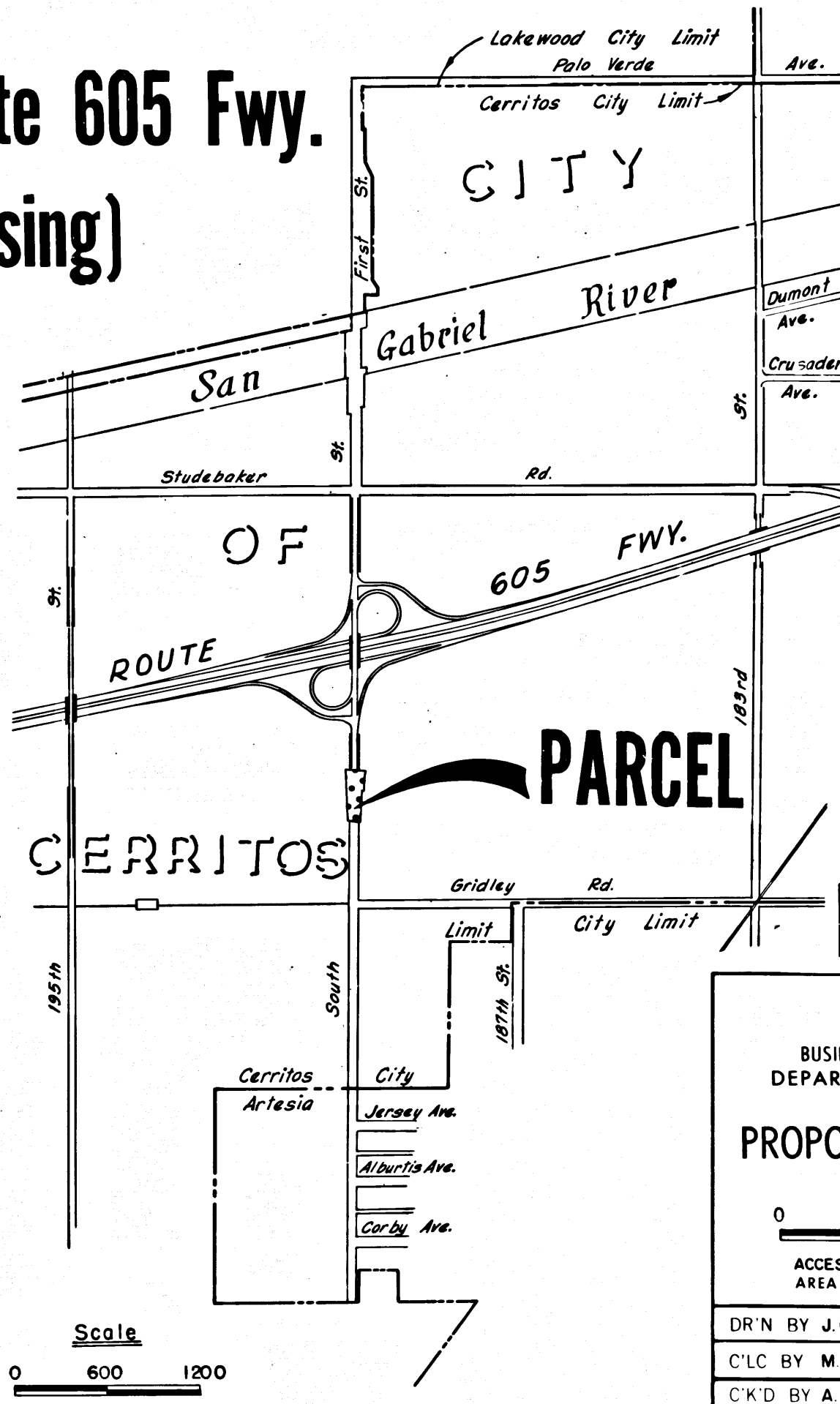
STATE OF CALIFORNIA
 BUSINESS AND TRANSPORTATION AGENCY
 DEPARTMENT OF TRANSPORTATION

RIGHT OF WAY MAPS OF
 STATE HIGHWAY

In the City of Cerritos along Route 605 Fwy.
 at South Street (Overcrossing)



PARCEL 1

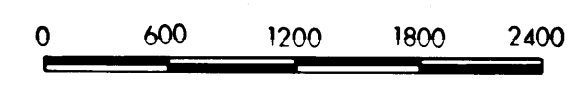


PARCEL 1

INTERSTATE

STATE OF CALIFORNIA
 BUSINESS AND TRANSPORTATION AGENCY
 DEPARTMENT OF TRANSPORTATION

PROPOSED RELINQUISHMENT



ACCESS PROHIBITED
 AREA TO BE RELINQUISHED

DR'N BY J. QUAN	R/W MAP NO. F1957-788
C'LC BY M. RILEY	CONTRACT NO. 07-082264
C'K'D BY A. MARTINEZ	REL-623
REVISED	

33

COUNTY ENGINEER'S COPY