

2:47 PM. 13/60

BOOK 13 PAGE 60

STATE OF CALIFORNIA
 BUSINESS AND TRANSPORTATION AGENCY
 DEPARTMENT OF TRANSPORTATION

DIST.	COUNTY	ROUTE	POST MILES	SHEET NO.	TOTAL SHEETS
07	LA	5	59.9/63.4	1	9

Alfred K. ...
 CHIEF, RIGHT OF WAY ENGINEERING AND
 UTILITIES RELOCATION BRANCH
 REGISTERED CIVIL ENGINEER NO. 12767

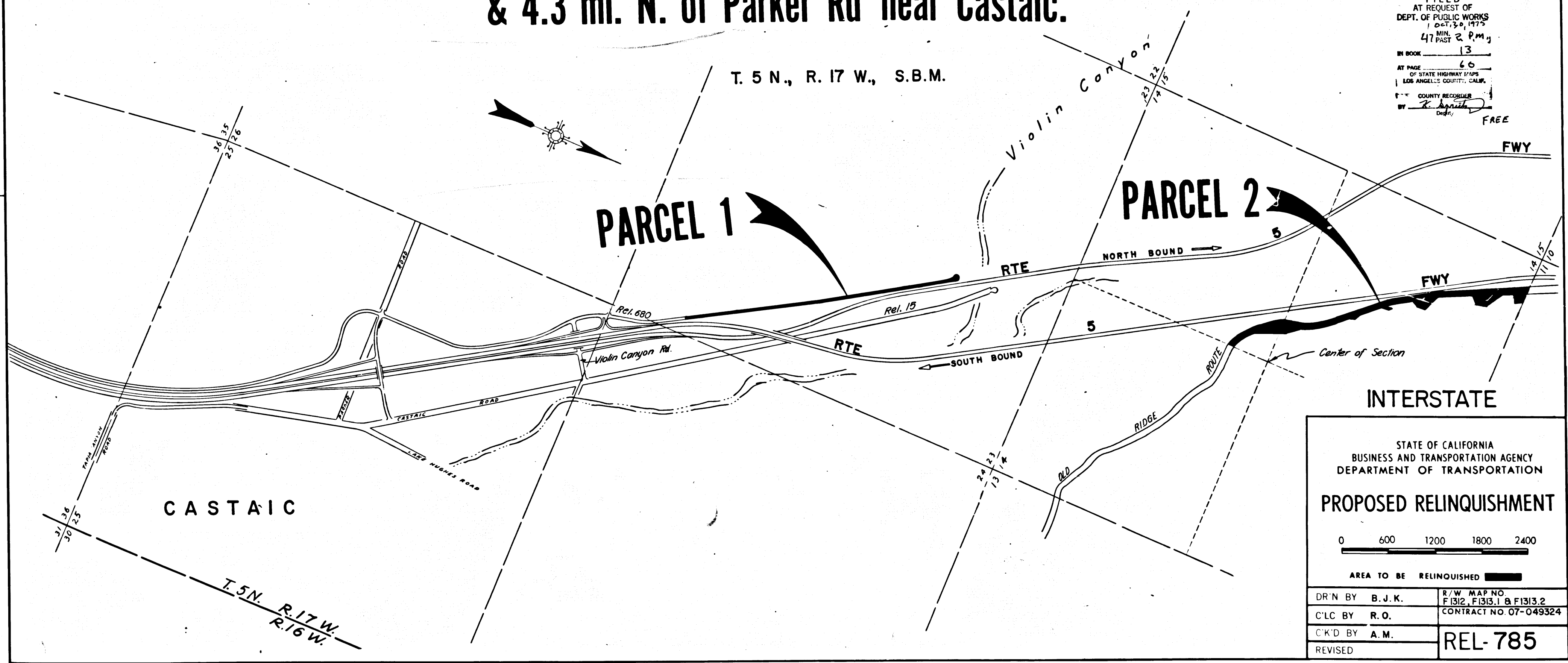
6-2-75
 DATE

Recorded in the Office
 of the County Recorder
 LOS ANGELES COUNTY

S.H.M.B. No. 3874 Pg.

FILED
 AT REQUEST OF
 DEPT. OF PUBLIC WORKS
 DIST. 50, 1975
 JUN 2 P.M.
 47 PAST 2 P.M.
 IN BOOK 13
 AT PAGE 60
 OF STATE HIGHWAY MAPS
 LOS ANGELES COUNTY, CALIF.
 COUNTY RECORDER
 BY *[Signature]*
 FREE

RIGHT OF WAY MAPS OF
 STATE HIGHWAY
 In the County of Los Angeles along Rte. 5 Fwy. between 0.8 mi. N. of Parker Rd.
 & 4.3 mi. N. of Parker Rd near Castaic.



INTERSTATE

STATE OF CALIFORNIA
 BUSINESS AND TRANSPORTATION AGENCY
 DEPARTMENT OF TRANSPORTATION

PROPOSED RELINQUISHMENT

0 600 1200 1800 2400
 AREA TO BE RELINQUISHED

DR'N BY B. J. K.	R/W MAP NO. F1312, F1313.1 & F1313.2
C'LC BY R. O.	CONTRACT NO. 07-049324
C'K'D BY A. M.	REL-785
REVISED	

13/61

BOOK 13 PAGE 61

STATE OF CALIFORNIA
 BUSINESS AND TRANSPORTATION AGENCY
 DEPARTMENT OF TRANSPORTATION

DIST	COUNTY	ROUTE	POST MILES	SHEET NO	TOTAL SHEETS
07	LA	5	59.9/63.4	2	9

R. De Rosa
 CHIEF, RIGHT OF WAY ENGINEERING AND
 UTILITIES RELOCATION BRANCH
 REGISTERED CIVIL ENGINEER NO. 12767

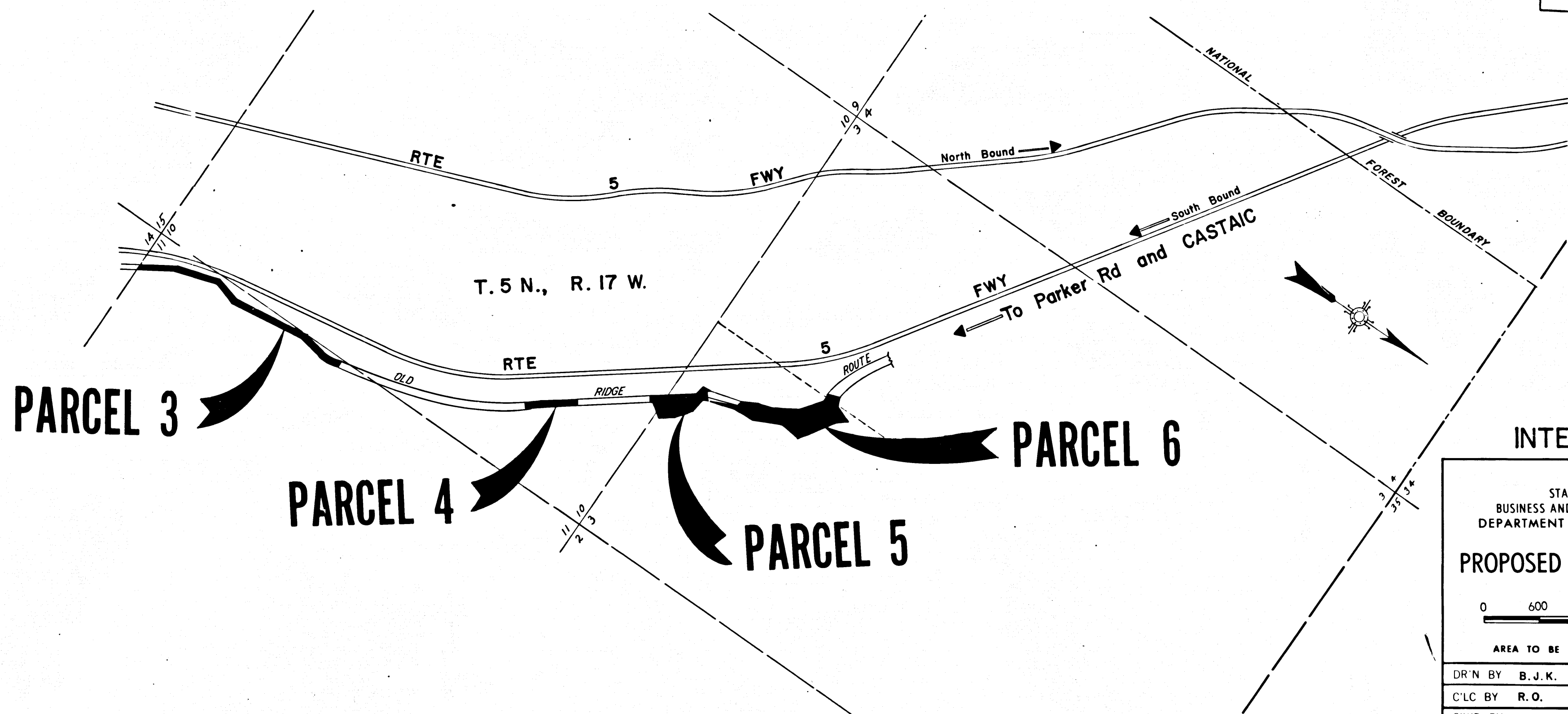
6-2-75
 DATE

Recorded in the Office
 of the County Recorder
 LOS ANGELES COUNTY
 S.H.M.B. No. Pg.

FILED WITH LOS ANGELES
 COUNTY RECORDER
 OCT 30 1975

RIGHT OF WAY MAPS OF
 STATE HIGHWAY

In the County of Los Angeles along Rte. 5 Fwy. between 0.8 mi. N. of Parker Rd.
 & 4.3 mi. N. of Parker Rd near Castaic.



STATE OF CALIFORNIA
 BUSINESS AND TRANSPORTATION AGENCY
 DEPARTMENT OF TRANSPORTATION

PROPOSED RELINQUISHMENT

0 600 1200 1800 2400

AREA TO BE RELINQUISHED

DR'N BY B. J. K.	R/W MAP NO. F1312, F1313.1 & F1313.2
C'LC BY R. O.	CONTRACT NO. 07-049324
C'K'D BY A. M.	REL-785
REVISED	

13/12

DIST	COUNTY	ROUTE	POST MILES	SHEET NO	TOTAL SHEETS
07	LA	5	59.9/63.4	3	9

SEC. 23
T.5N, R.17W. S.B.M.3M.

COUNTY OF

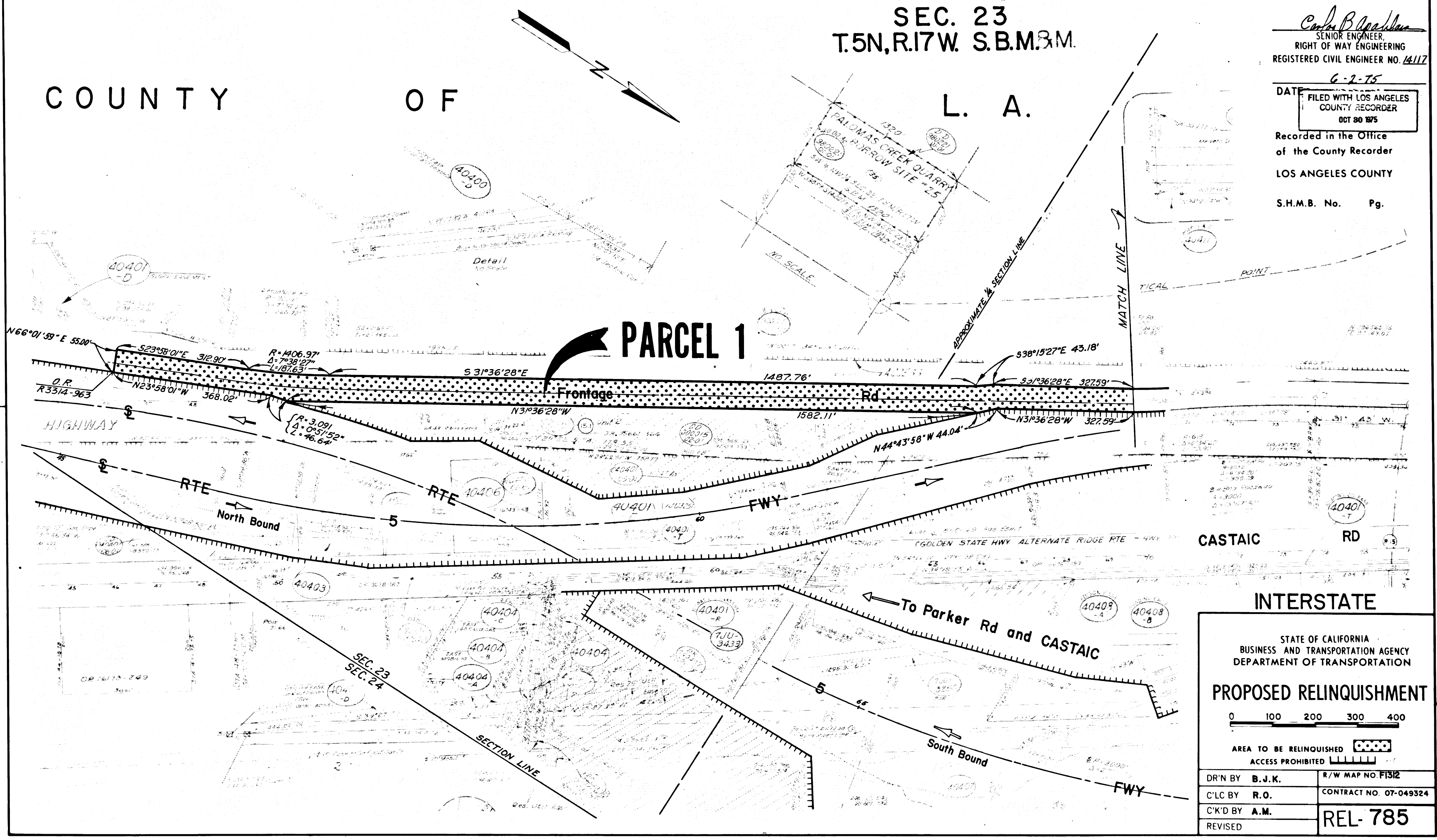
L. A.

Carl B. Buehler
 SENIOR ENGINEER,
 RIGHT OF WAY ENGINEERING
 REGISTERED CIVIL ENGINEER NO. 14117

DATE 6-2-75
 FILED WITH LOS ANGELES
 COUNTY RECORDER
 OCT 30 1975

Recorded in the Office
 of the County Recorder
 LOS ANGELES COUNTY

S.H.M.B. No. Pg.



CASTAIC RD
 INTERSTATE

STATE OF CALIFORNIA
 BUSINESS AND TRANSPORTATION AGENCY
 DEPARTMENT OF TRANSPORTATION

PROPOSED RELINQUISHMENT

0 100 200 300 400

AREA TO BE RELINQUISHED [Dotted Box]
 ACCESS PROHIBITED [Hatched Box]

DR'N BY	B. J. K.	R/W MAP NO.	F1312
C'LC BY	R. O.	CONTRACT NO.	07-049324
C'K'D BY	A. M.	REL-785	
REVISED			

COUNTY ENGINEER'S COPY

COUNTY

OF

L. A.

12/63

BOOK 13 PAGE 63

DIST	COUNTY	ROUTE	POST MILES	SHEET NO.	TOTAL SHEETS
07	LA	5	59.9/63.4	4	9

SEC. 23
T.5N, R.17W. S.B.M.

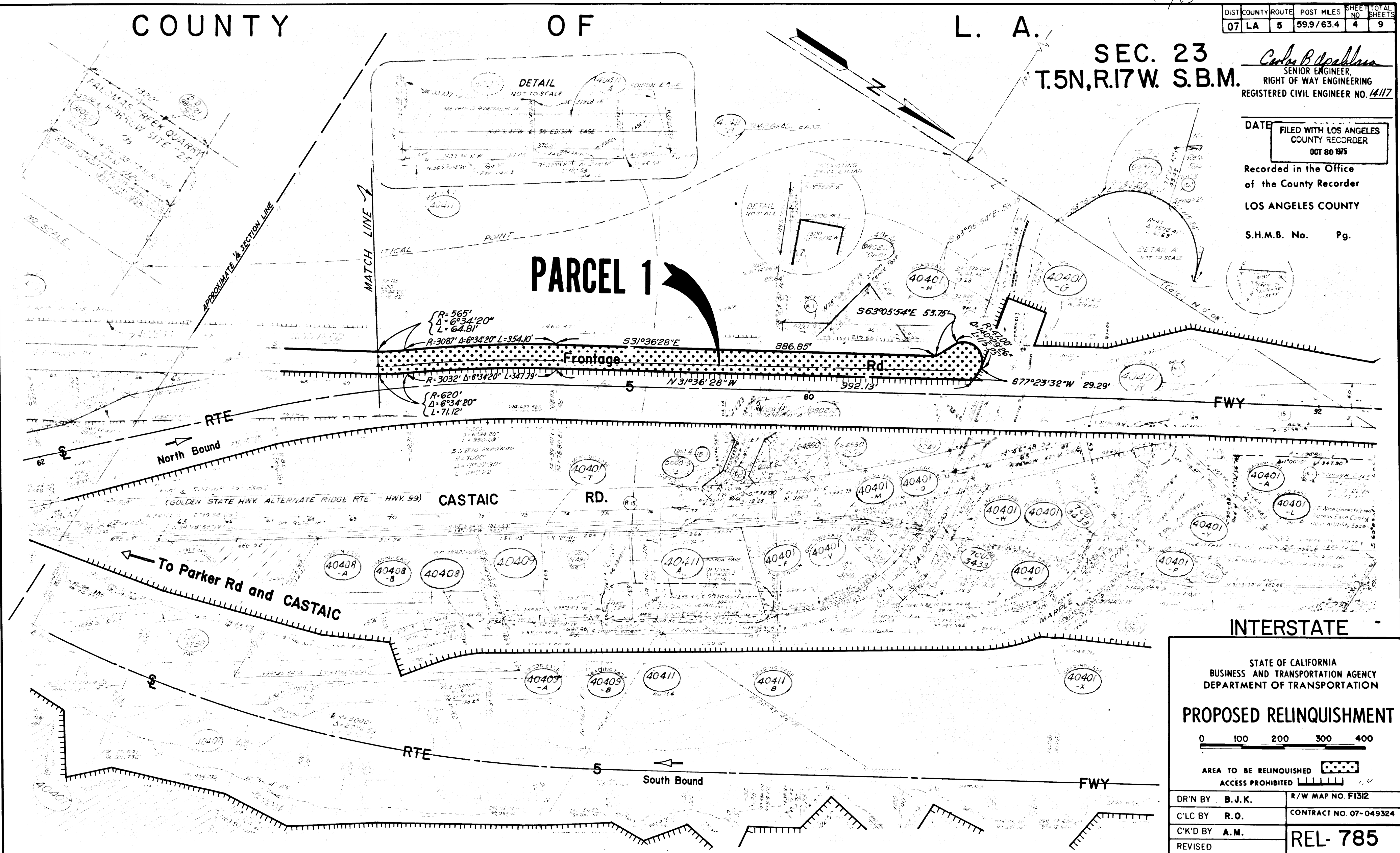
Carlos B. Deallana
SENIOR ENGINEER
RIGHT OF WAY ENGINEERING
REGISTERED CIVIL ENGINEER NO. 14117

DATE FILED WITH LOS ANGELES COUNTY RECORDER
OCT 30 1975

Recorded in the Office of the County Recorder
LOS ANGELES COUNTY

S.H.M.B. No. Pg.

PARCEL 1



STATE OF CALIFORNIA
BUSINESS AND TRANSPORTATION AGENCY
DEPARTMENT OF TRANSPORTATION

PROPOSED RELINQUISHMENT

0 100 200 300 400

AREA TO BE RELINQUISHED

ACCESS PROHIBITED

DR'N BY	B. J. K.	R/W MAP NO. F1312
C'LC BY	R. O.	CONTRACT NO. 07-049324
C'K'D BY	A. M.	REL-785
REVISED		

20

COUNTY ENGINEER'S COPY

3/64

BOOK 13 PAGE 64

DIST	COUNTY	ROUTE	POST MILES	SHEET NO	TOTAL SHEETS
07	LA	5	59.9/63.4	5	9

FILED WITH LOS ANGELES COUNTY RECORDER
OCT 30 1975

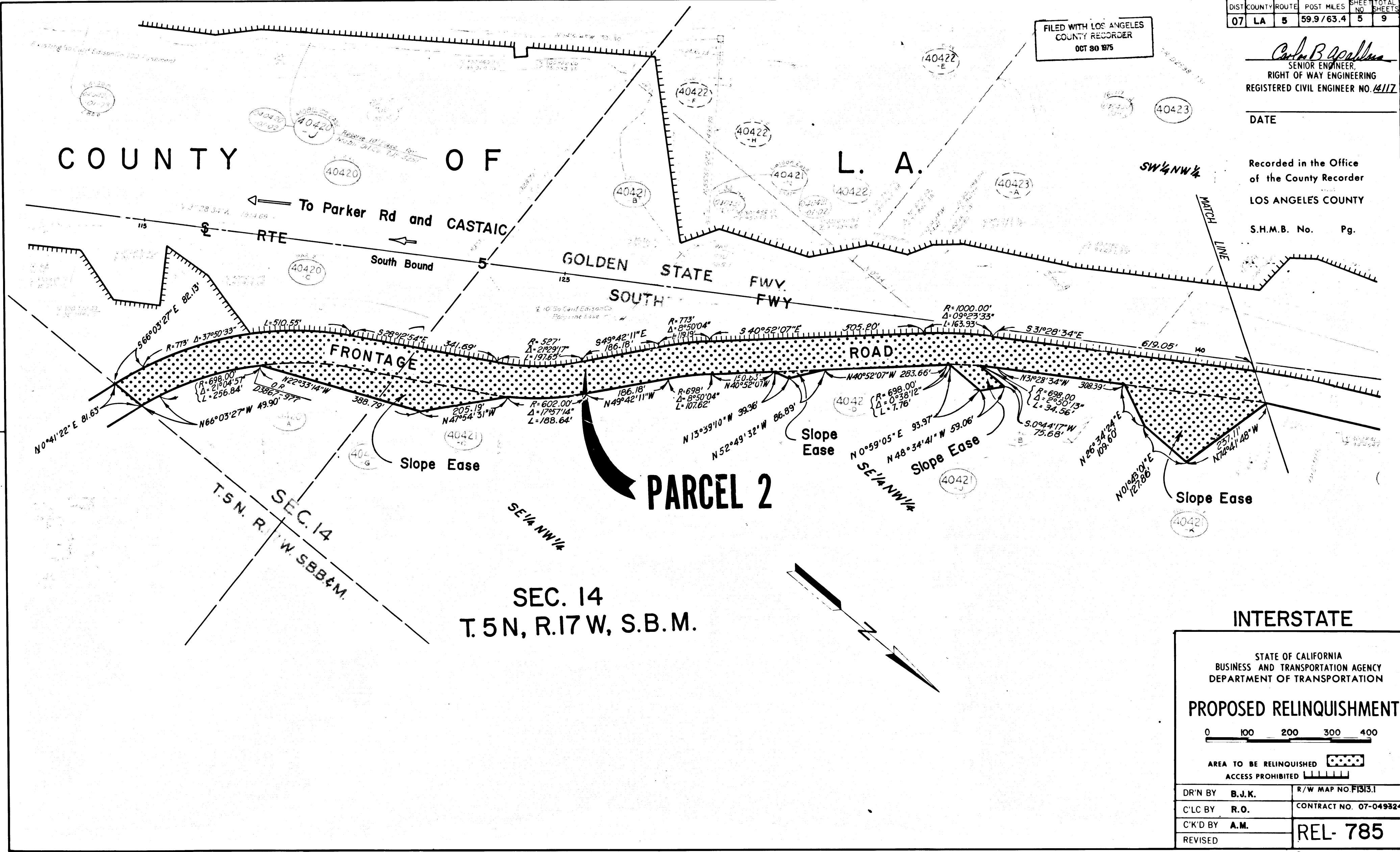
Carl B. Boudreau
SENIOR ENGINEER,
RIGHT OF WAY ENGINEERING
REGISTERED CIVIL ENGINEER NO. 14117

DATE

Recorded in the Office of the County Recorder
LOS ANGELES COUNTY

S.H.M.B. No. Pg.

COUNTY OF L. A.



PARCEL 2

SEC. 14 T.5N, R.17W, S.B.M.

INTERSTATE

STATE OF CALIFORNIA
BUSINESS AND TRANSPORTATION AGENCY
DEPARTMENT OF TRANSPORTATION

PROPOSED RELINQUISHMENT

0 100 200 300 400

AREA TO BE RELINQUISHED

ACCESS PROHIBITED

DR'N BY	B.J.K.	R/W MAP NO.	F1513.1
C'LC BY	R.O.	CONTRACT NO.	07-049324
C'K'D BY	A.M.	REL-	785
REVISED			

20

COUNTY ENGINEER'S COPY

13/85

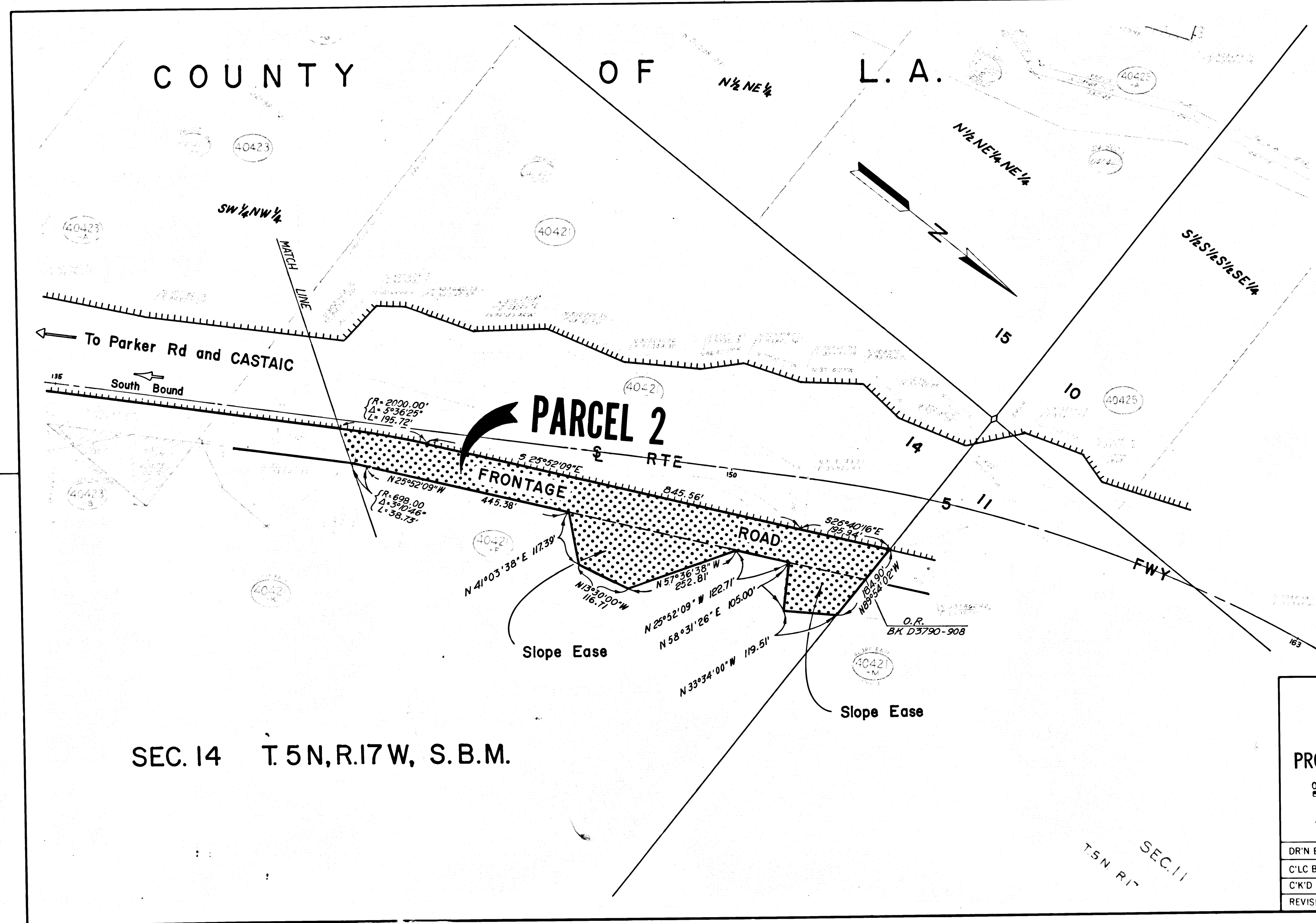
BOOK 13 PAGE 65

DIST	COUNTY	ROUTE	POST MILES	SHEET NO.	TOTAL SHEETS
07	LA	5	59.9/63.4	6	9

Carl B. Apollina
 SENIOR ENGINEER,
 RIGHT OF WAY ENGINEERING
 REGISTERED CIVIL ENGINEER NO. 14117

DATE _____
 Recorded in the Office
 of the County Recorder
 LOS ANGELES COUNTY
 S.H.M.B. No. Pg.

FILED WITH LOS ANGELES
 COUNTY RECORDER
 OCT 30 1975



SEC. 14 T. 5 N, R. 17 W, S. B. M.

INTERSTATE

STATE OF CALIFORNIA
 BUSINESS AND TRANSPORTATION AGENCY
 DEPARTMENT OF TRANSPORTATION

PROPOSED RELINQUISHMENT

0 100 200 300 400

AREA TO BE RELINQUISHED [Dotted Pattern]
 ACCESS PROHIBITED [Hatched Pattern]

DR'N BY	B. J. K.	R/W MAP NO. F1313.1
C'LC BY	R. O.	CONTRACT NO. 07-049324
C'K'D BY	A. M.	REL- 785
REVISED		

20

COUNTY ENGINEER'S COPY

13/66

BOOK 13 PAGE 66

DIST	COUNTY	ROUTE	POST MILES	SHEET NO	TOTAL SHEETS
07	LA	5	59.9/63.4	7	9

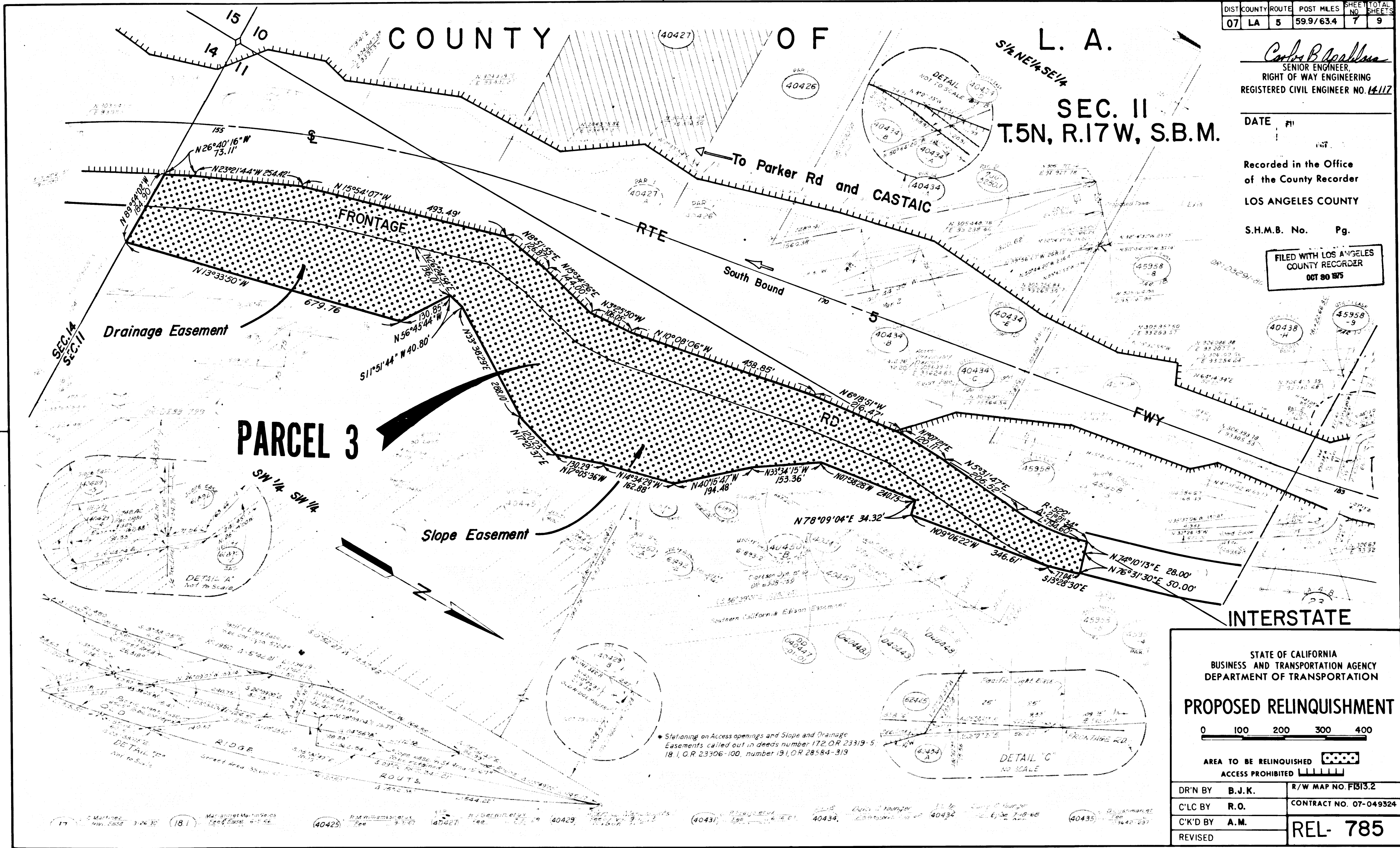
Carl B. ...
 SENIOR ENGINEER
 RIGHT OF WAY ENGINEERING
 REGISTERED CIVIL ENGINEER NO. 14117

DATE #11

Recorded in the Office
 of the County Recorder
 LOS ANGELES COUNTY

S.H.M.B. No. Pg.

FILED WITH LOS ANGELES
 COUNTY RECORDER
 OCT 30 1975



STATE OF CALIFORNIA
 BUSINESS AND TRANSPORTATION AGENCY
 DEPARTMENT OF TRANSPORTATION

PROPOSED RELINQUISHMENT

0 100 200 300 400

AREA TO BE RELINQUISHED

ACCESS PROHIBITED

DR'N BY	B. J. K.	R/W MAP NO. FB13.2
C'LC BY	R. O.	CONTRACT NO. 07-049324
C'K'D BY	A. M.	REL- 785
REVISED		

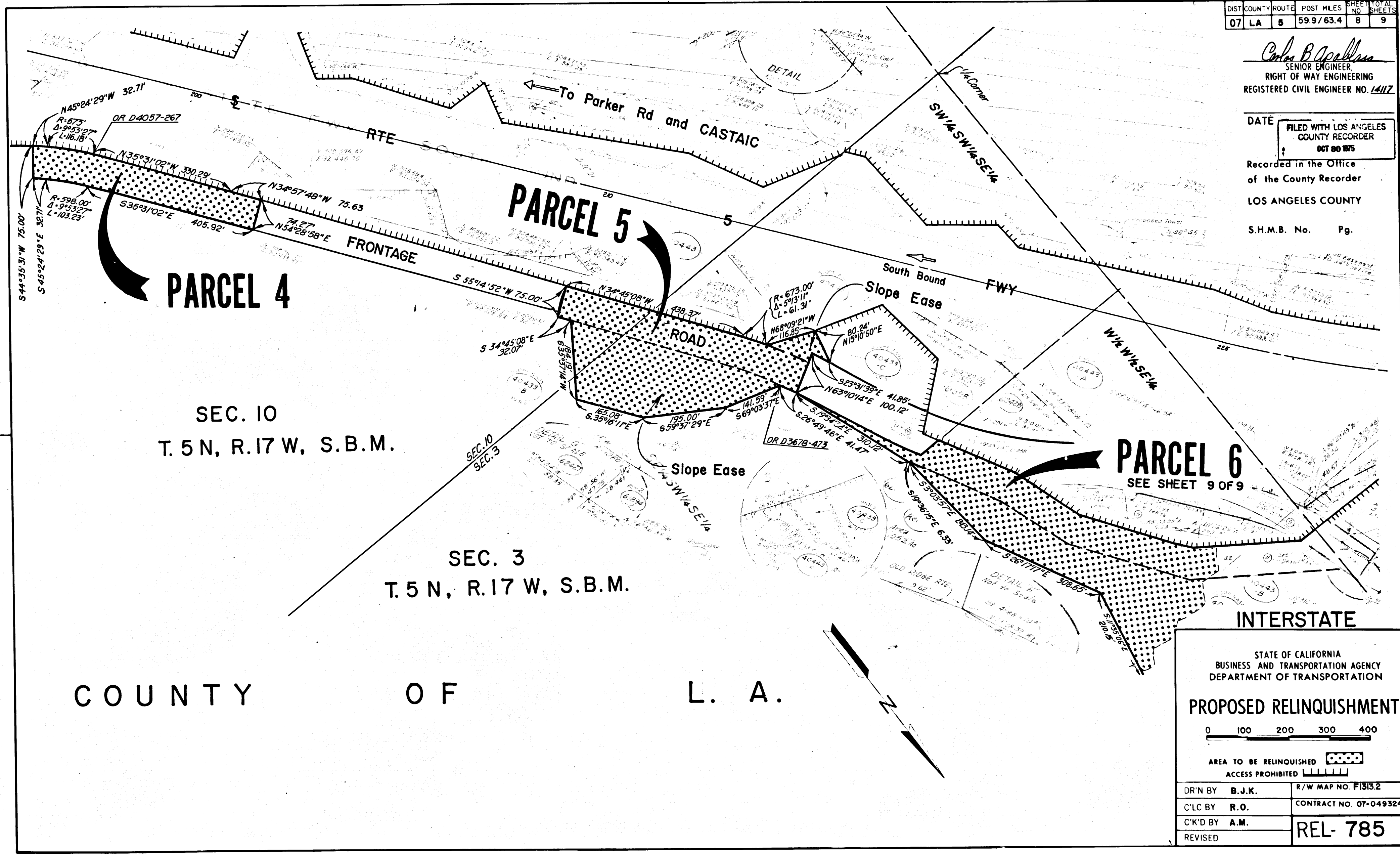
COUNTY ENGINEER'S COPY

DIST	COUNTY	ROUTE	POST MILES	SHEET NO.	TOTAL SHEETS
07	LA	5	59.9/63.4	8	9

Charles B. Gallina
 SENIOR ENGINEER,
 RIGHT OF WAY ENGINEERING
 REGISTERED CIVIL ENGINEER NO. 14112

DATE FILED WITH LOS ANGELES COUNTY RECORDER
 OCT 80 1975

Recorded in the Office of the County Recorder
 LOS ANGELES COUNTY
 S.H.M.B. No. Pg.



STATE OF CALIFORNIA
 BUSINESS AND TRANSPORTATION AGENCY
 DEPARTMENT OF TRANSPORTATION

PROPOSED RELINQUISHMENT

0 100 200 300 400

AREA TO BE RELINQUISHED [Stippled Pattern]
 ACCESS PROHIBITED [Hatched Pattern]

DR'N BY	B. J. K.	R/W MAP NO.	F1313.2
C/LC BY	R. O.	CONTRACT NO.	07-049324
C/K'D BY	A. M.	REL-	785
REVISED			

F1312

DIST	COUNTY	ROUTE	POST MILES	SHEET NO	TOTAL SHEETS
07	LA	5	59.9 / 63.4	9	9

Carl B. ...
 SENIOR ENGINEER,
 RIGHT OF WAY ENGINEERING
 REGISTERED CIVIL ENGINEER NO. 14117

DATE FILED WITH LOS ANGELES COUNTY RECORDER
 OCT 20 1975

Recorded in the Office of the County Recorder
 LOS ANGELES COUNTY
 S.H.M.B. No. Pg.

