

Pl 13 pg 71

BOOK 13 PAGE 71

STATE OF CALIFORNIA  
BUSINESS AND TRANSPORTATION AGENCY  
DEPARTMENT OF TRANSPORTATION

RIGHT OF WAY MAPS OF  
STATE HIGHWAY  
In the City of Los Angeles, along Route 5/210  
(Foothill Blvd.) between Filbert St. and Sierra Hwy.

DIST.	COUNTY	ROUTE	POST MILES	SHEET NO.	TOTAL SHEETS
07	LA	5	43.6/45.6	1	6
			210	0.0/0.8	

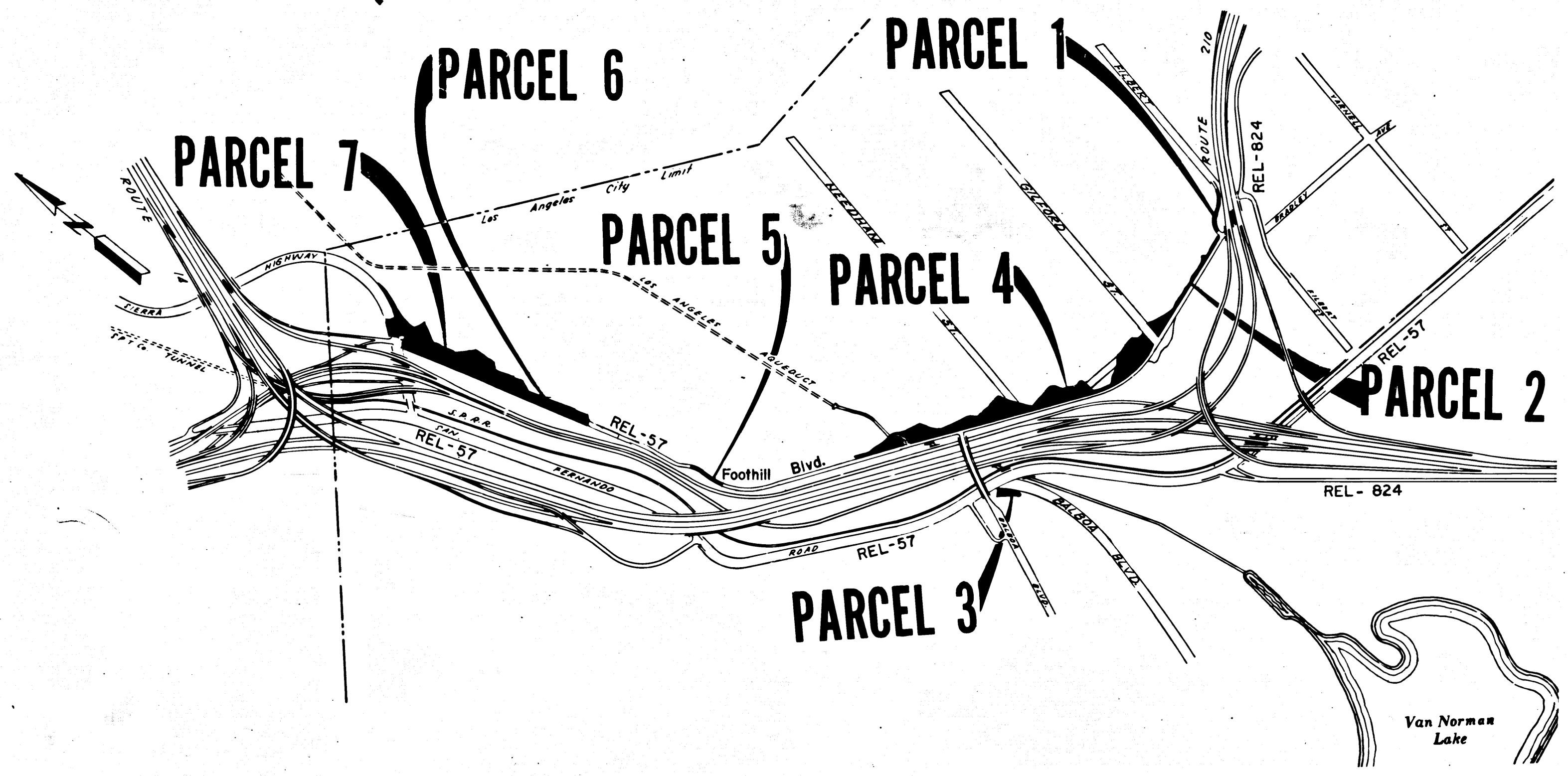
3452  
3452  
FILED  
AT REQUEST OF  
DEPT. OF PUBLIC WORKS  
NOV 4 1975  
27 MIN PAST 2 P.M.  
IN BOOK 13  
PAGE 71  
OF STATE HIGHWAY MAPS  
LOS ANGELES COUNTY, CALIF.  
COUNTY RECORDER  
Deputy *Free*

*William C. Boria*  
CHIEF, RIGHT OF WAY ENGINEERING  
AND UTILITIES RELOCATION BRANCH  
REGISTERED CIVIL ENGINEER NO. 9790

8-5-75  
DATE

Recorded in the Office  
of the County Recorder  
LOS ANGELES COUNTY

S.H.M.B. No. Pg.



(18)

INTERSTATE

STATE OF CALIFORNIA  
BUSINESS AND TRANSPORTATION AGENCY  
DEPARTMENT OF TRANSPORTATION

**PROPOSED RELINQUISHMENT**

0 600 1200 1800 2400

AREA TO BE RELINQUISHED

DR'N BY	MH	R/W MAP NO.	F-1303
C'LC BY	MLR	CONTRACT NO.	07-287834
C'K'D BY	AM	REL-936	
REVISED			

COUNTY ENGINEER'S COPY

6x 13 p 72

DIST	COUNTY	ROUTE	POST MILES	SHEET NO.	TOTAL SHEETS
07	LA	5	43.6/45.6	2	6
			210	0.0/0.8	

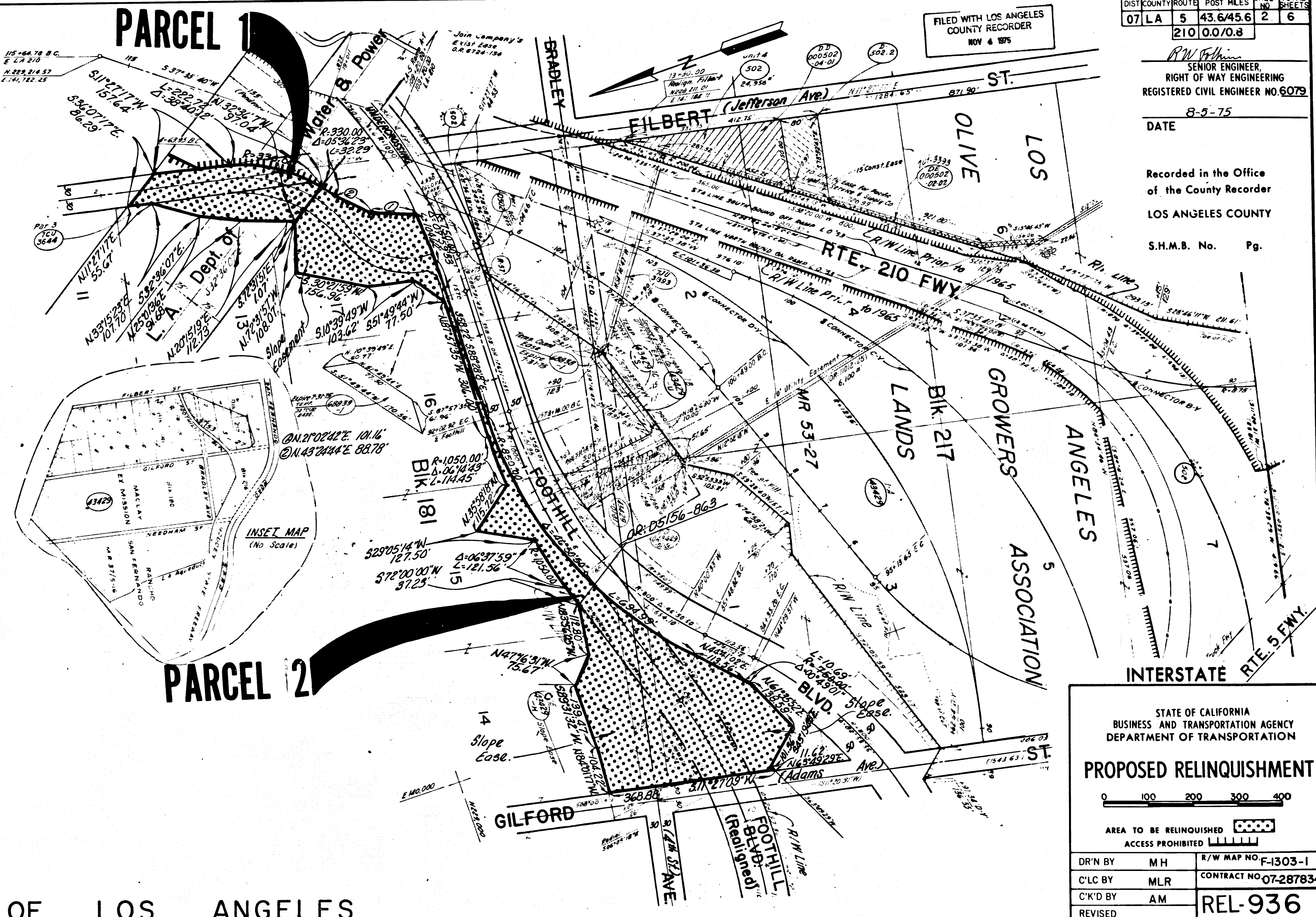
FILED WITH LOS ANGELES COUNTY RECORDER  
NOV 4 1975

R.W. Williams  
SENIOR ENGINEER,  
RIGHT OF WAY ENGINEERING  
REGISTERED CIVIL ENGINEER NO. 6079

DATE  
8-5-75

Recorded in the Office  
of the County Recorder  
LOS ANGELES COUNTY

S.H.M.B. No. Pg.



CITY OF LOS ANGELES

STATE OF CALIFORNIA  
BUSINESS AND TRANSPORTATION AGENCY  
DEPARTMENT OF TRANSPORTATION

**PROPOSED RELINQUISHMENT**

0 100 200 300 400

AREA TO BE RELINQUISHED [Dotted Pattern]

ACCESS PROHIBITED [Hatched Pattern]

DR'N BY	MH	R/W MAP NO	F-1303-1
C'LC BY	MLR	CONTRACT NO	07-287834
C'K'D BY	AM	REL-936	
REVISED			

COUNTY ENGINEER'S COPY

194 14 06 17

BOOK 13 PAGE 73

# CITY OF LOS ANGELES

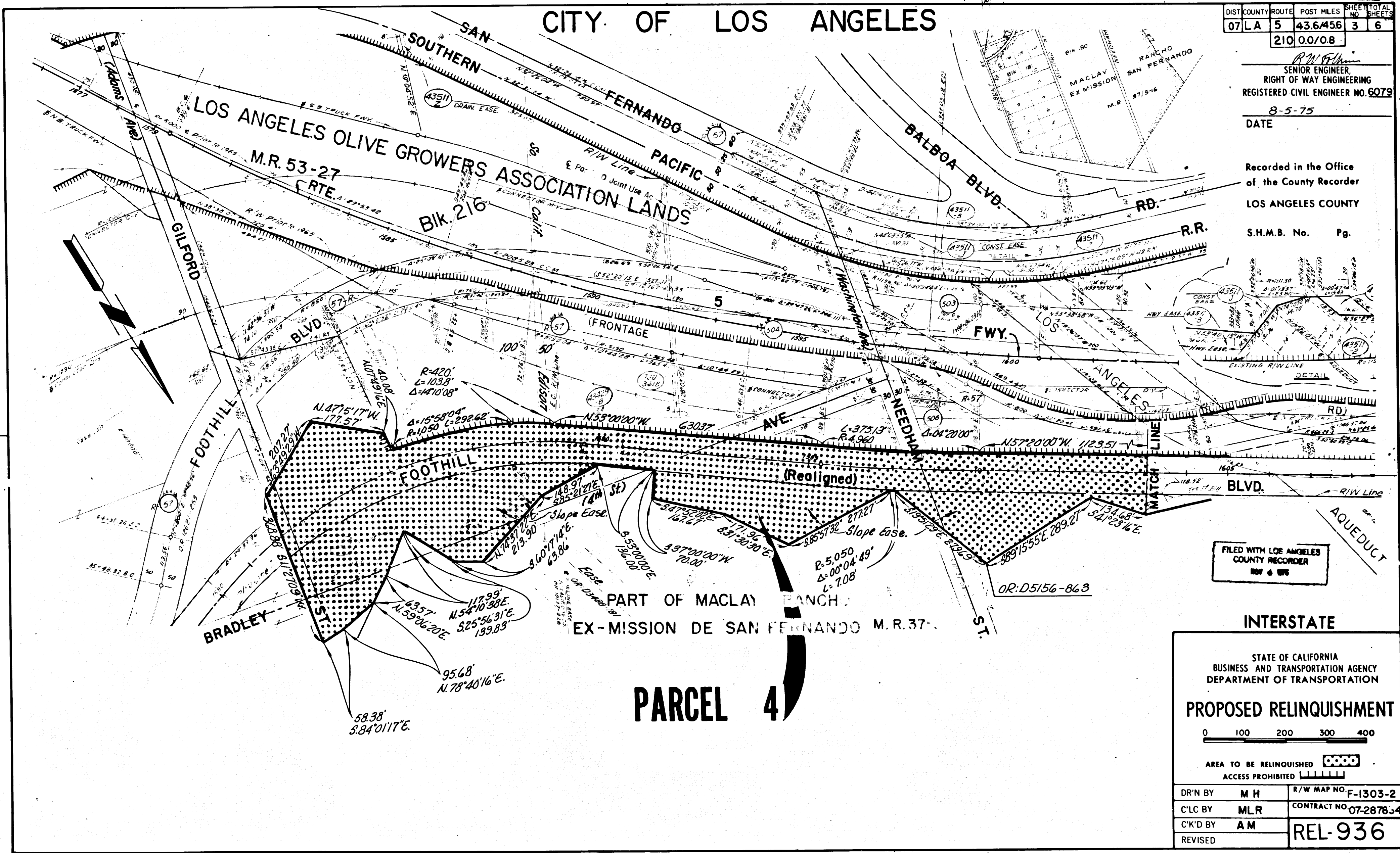
DIST	COUNTY	ROUTE	POST MILES	SHEET NO.	TOTAL SHEETS
07	LA	5	43.6/45.6	3	6
			210	0.0/0.8	

*R.M. Williams*  
 SENIOR ENGINEER,  
 RIGHT OF WAY ENGINEER  
 REGISTERED CIVIL ENGINEER NO. 6079

8-5-75  
 DATE

Recorded in the Office  
 of the County Recorder  
 LOS ANGELES COUNTY

S.H.M.B. No. Pg.



FILED WITH LOS ANGELES  
 COUNTY RECORDER  
 NOV 4 1975

**INTERSTATE**

STATE OF CALIFORNIA  
 BUSINESS AND TRANSPORTATION AGENCY  
 DEPARTMENT OF TRANSPORTATION

**PROPOSED RELINQUISHMENT**

0 100 200 300 400

AREA TO BE RELINQUISHED

ACCESS PROHIBITED

DR'N BY	M H	R/W MAP NO.	F-1303-2
C'LC BY	MLR	CONTRACT NO.	07-2878-4
C'K'D BY	AM	<b>REL-936</b>	
REVISED			

COUNTY ENGINEER'S COPY

DIST	COUNTY	ROUTE	POST MILES	SHEET NO.	TOTAL SHEETS
07	LA	5	436/456	4	6
			2100.0/0.8		

FILED WITH LOS ANGELES COUNTY RECORDER  
NOV 4 1975

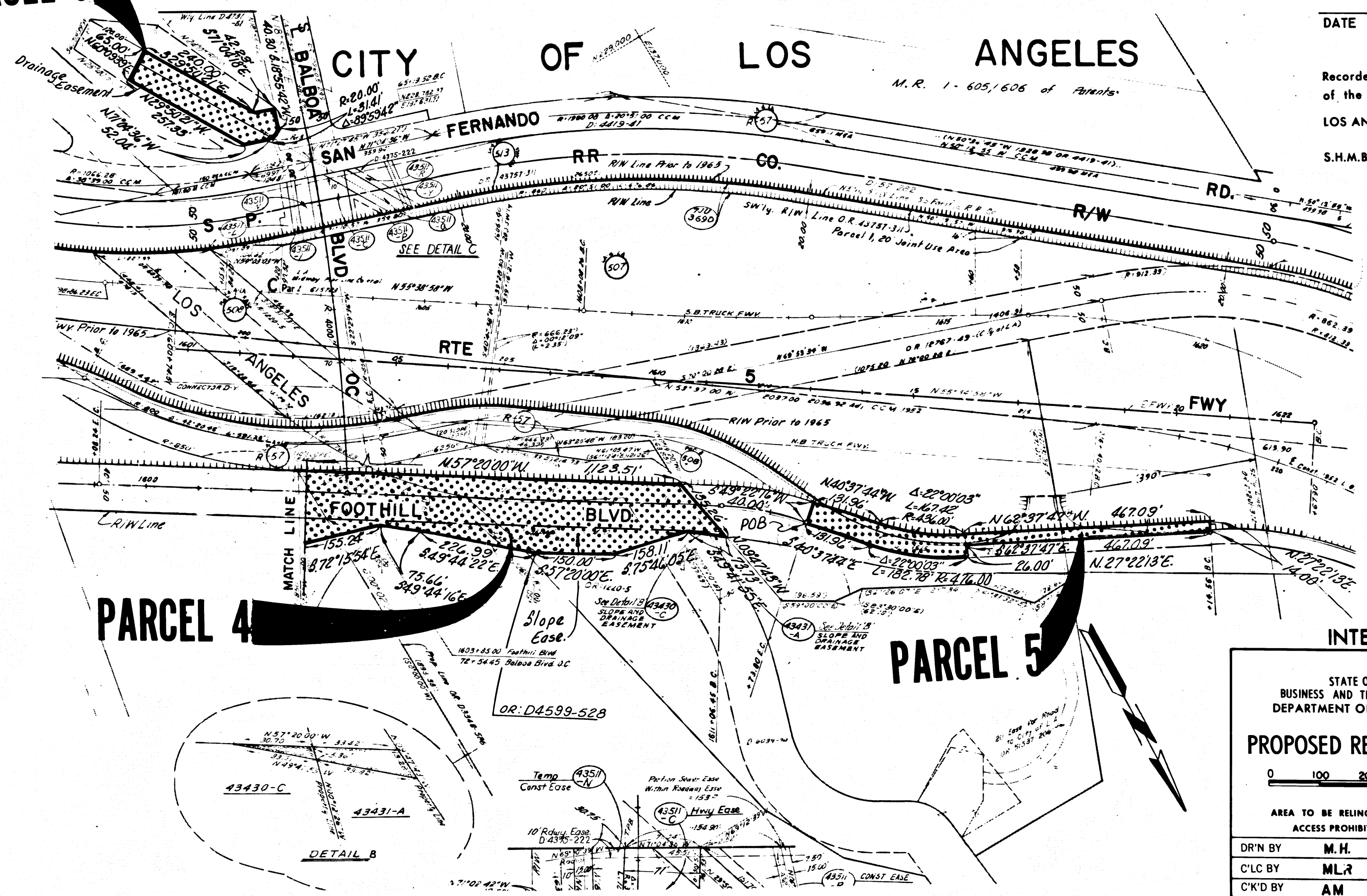
*R.W. Williams*  
SENIOR ENGINEER,  
RIGHT OF WAY ENGINEERING -  
REGISTERED CIVIL ENGINEER NO. 6079  
8-5-75  
DATE

Recorded in the Office  
of the County Recorder  
LOS ANGELES COUNTY  
S.H.M.B. No. Pg.

PARCEL 3

CITY OF LOS ANGELES

M.R. 1-605,606 of Parents



PARCEL 4

PARCEL 5

INTERSTATE

STATE OF CALIFORNIA  
BUSINESS AND TRANSPORTATION AGENCY  
DEPARTMENT OF TRANSPORTATION

**PROPOSED RELINQUISHMENT**

0 100 200 300 400

AREA TO BE RELINQUISHED

ACCESS PROHIBITED

DR'N BY	M.H.	R/W MAP NO	F-1303-3
C'LC BY	MLR	CONTRACT NO.	07-287834
C'K'D BY	AM	REL	936
REVISED			

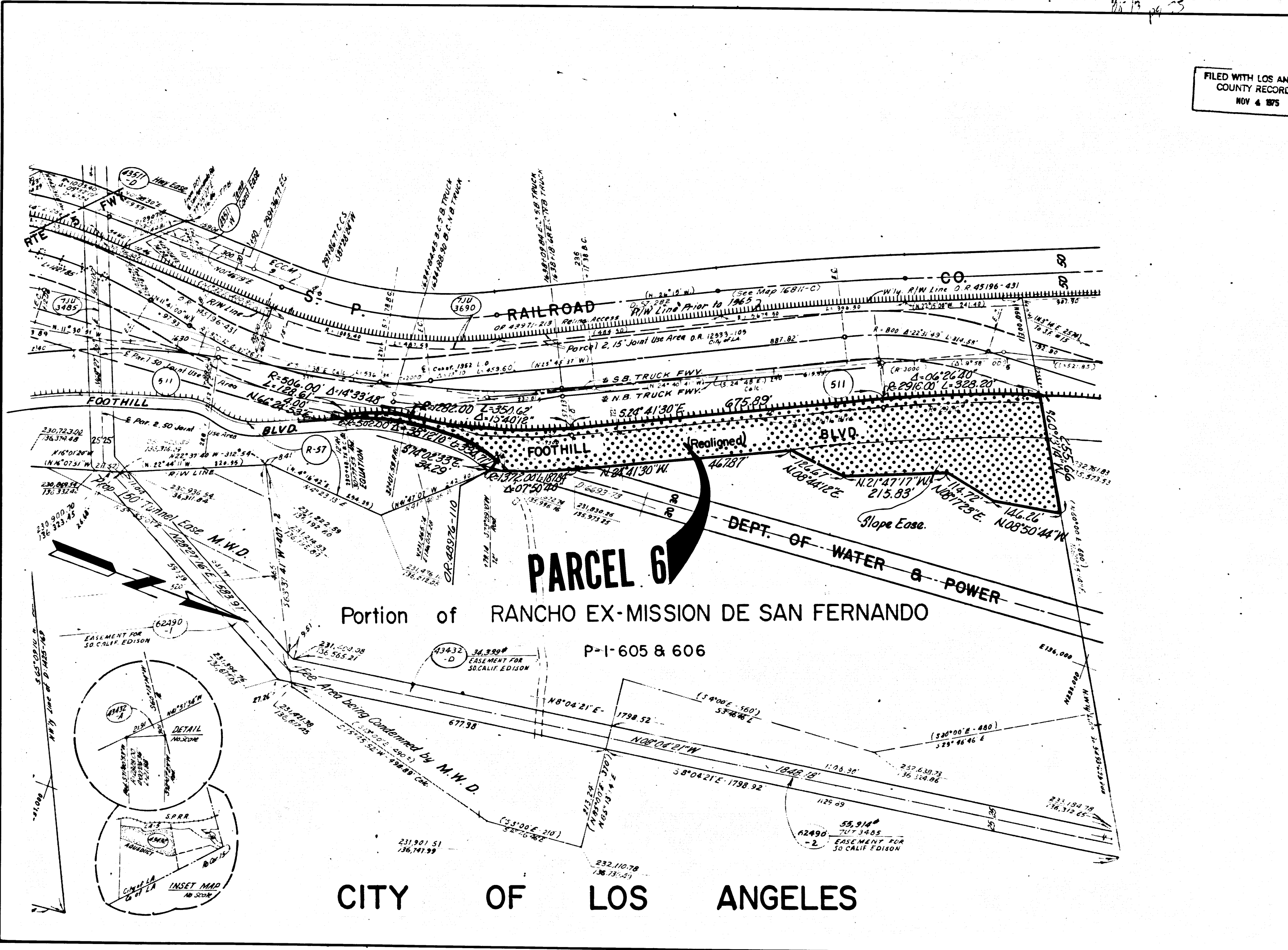
COUNTY ENGINEER'S COPY

DIST	COUNTY	ROUTE	POST MILES	SHEET NO.	TOTAL SHEETS
07	LA	5	43.6/45.6	5	6
			210	0.0/0.8	

FILED WITH LOS ANGELES COUNTY RECORDER  
NOV 4 1975

*R.W. Felt*  
SENIOR ENGINEER,  
RIGHT OF WAY ENGINEERING  
REGISTERED CIVIL ENGINEER NO. 6079  
8-5-75  
DATE

Recorded in the Office  
of the County Recorder  
LOS ANGELES COUNTY  
S.H.M.B. No. Pg.



INTERSTATE

STATE OF CALIFORNIA  
BUSINESS AND TRANSPORTATION AGENCY  
DEPARTMENT OF TRANSPORTATION

**PROPOSED RELINQUISHMENT**

0 100 200 300 400

AREA TO BE RELINQUISHED ACCESS PROHIBITED

DR'N BY	M.H.	R/W MAP NO.	F-1303-5
C'LC BY	MLR	CONTRACT NO.	07-287834
C'K'D BY	AM		REL-936
REVISED			

# CITY OF LOS ANGELES

4513 29 76

BOOK 13 PAGE 76

DIST	COUNTY	ROUTE	POST MILES	SHEET NO.	TOTAL SHEETS
07	LA	5	43.6/45.6	6	6
					210 O.O. 8

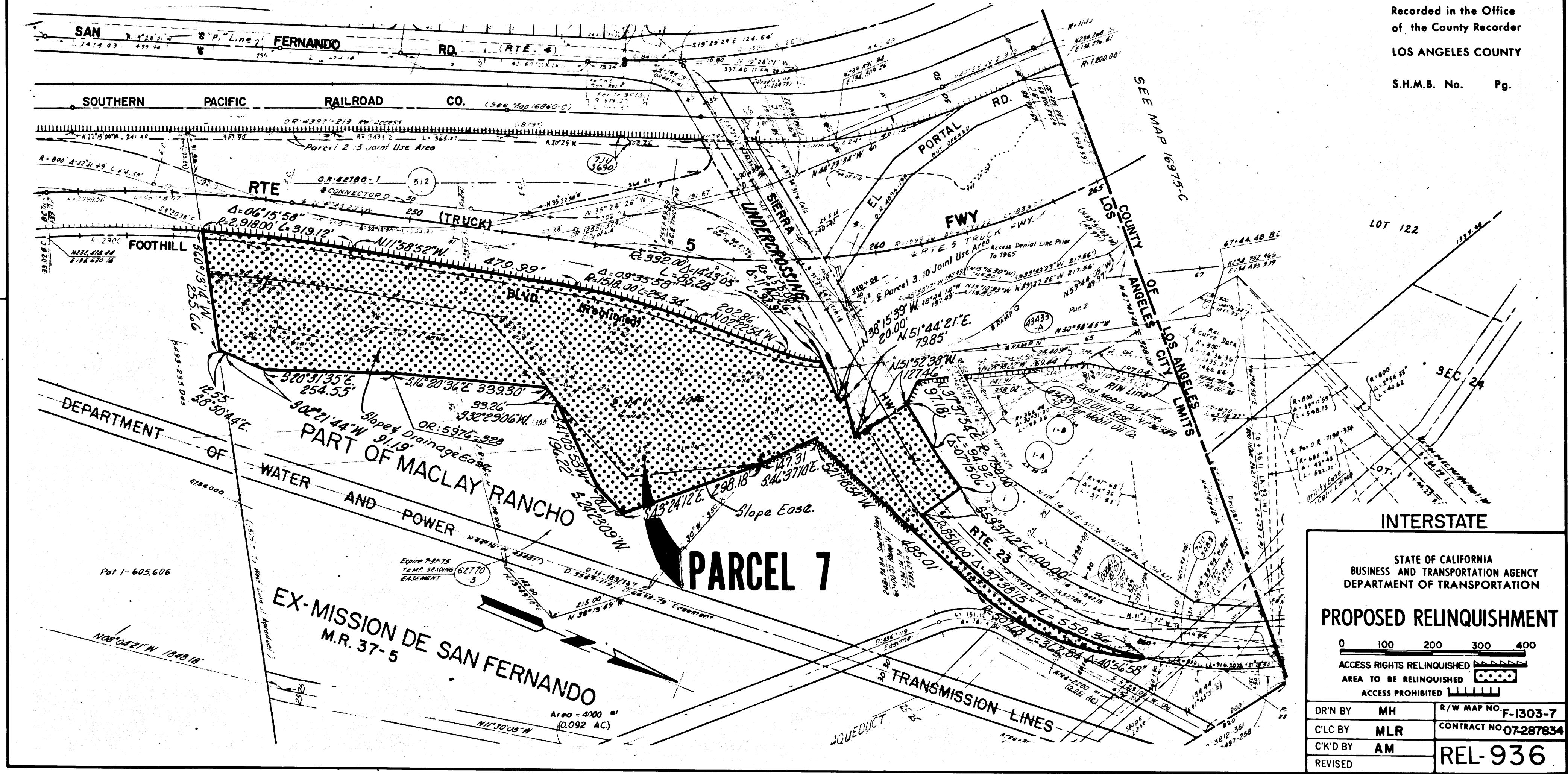
FILED WITH LOS ANGELES COUNTY RECORDER  
NOV 4 1975

*R.W. Collins*  
SENIOR ENGINEER,  
RIGHT OF WAY ENGINEERING  
REGISTERED CIVIL ENGINEER NO. 6079  
8-5-75

DATE

Recorded in the Office  
of the County Recorder  
LOS ANGELES COUNTY

S.H.M.B. No. Pg.



STATE OF CALIFORNIA  
BUSINESS AND TRANSPORTATION AGENCY  
DEPARTMENT OF TRANSPORTATION

### PROPOSED RELINQUISHMENT

0 100 200 300 400

ACCESS RIGHTS RELINQUISHED [Stippled Pattern]

AREA TO BE RELINQUISHED [Dotted Pattern]

ACCESS PROHIBITED [Horizontal Lines]

DR'N BY	MH	R/W MAP NO.	F-1303-7
C'LC BY	MLR	CONTRACT NO.	07-287834
C'K'D BY	AM	REL.	936
REVISED			

COUNTY ENGINEER'S COPY