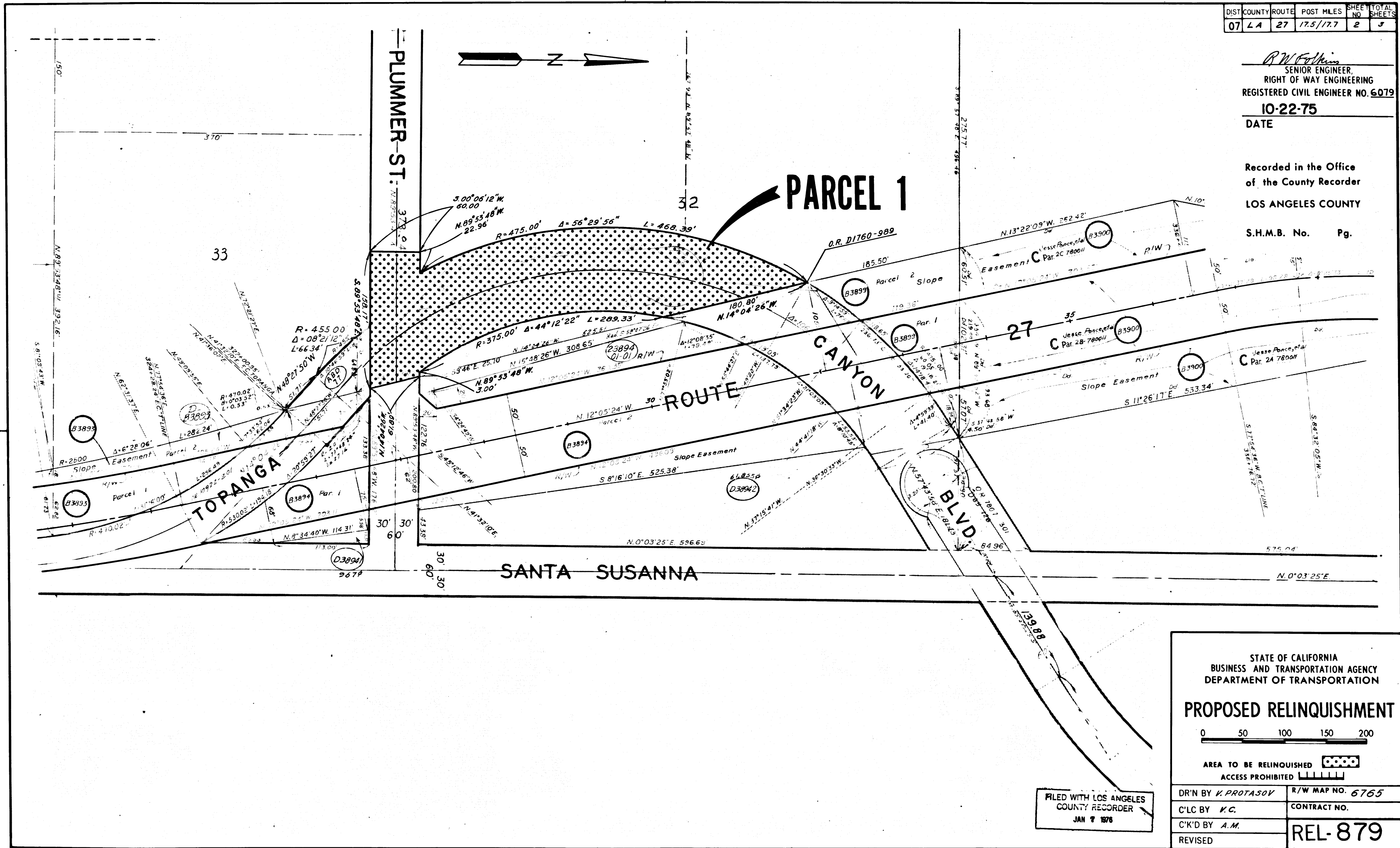


DIST	COUNTY	ROUTE	POST MILES	SHEET NO	TOTAL SHEETS
07	LA	27	17.5/17.7	2	3

R.W. Folstein
 SENIOR ENGINEER,
 RIGHT OF WAY ENGINEERING
 REGISTERED CIVIL ENGINEER NO. 6079
 10-22-75
 DATE

Recorded in the Office
 of the County Recorder
 LOS ANGELES COUNTY
 S.H.M.B. No. Pg.



FILED WITH LOS ANGELES
 COUNTY RECORDER
 JAN 7 1976

STATE OF CALIFORNIA
 BUSINESS AND TRANSPORTATION AGENCY
 DEPARTMENT OF TRANSPORTATION

PROPOSED RELINQUISHMENT

0 50 100 150 200

AREA TO BE RELINQUISHED ACCESS PROHIBITED

DR'N BY <i>K. PROTASOV</i>	R/W MAP NO. 6765
C/LC BY <i>K.C.</i>	CONTRACT NO.
C/K'D BY <i>A.M.</i>	REL-879
REVISED	

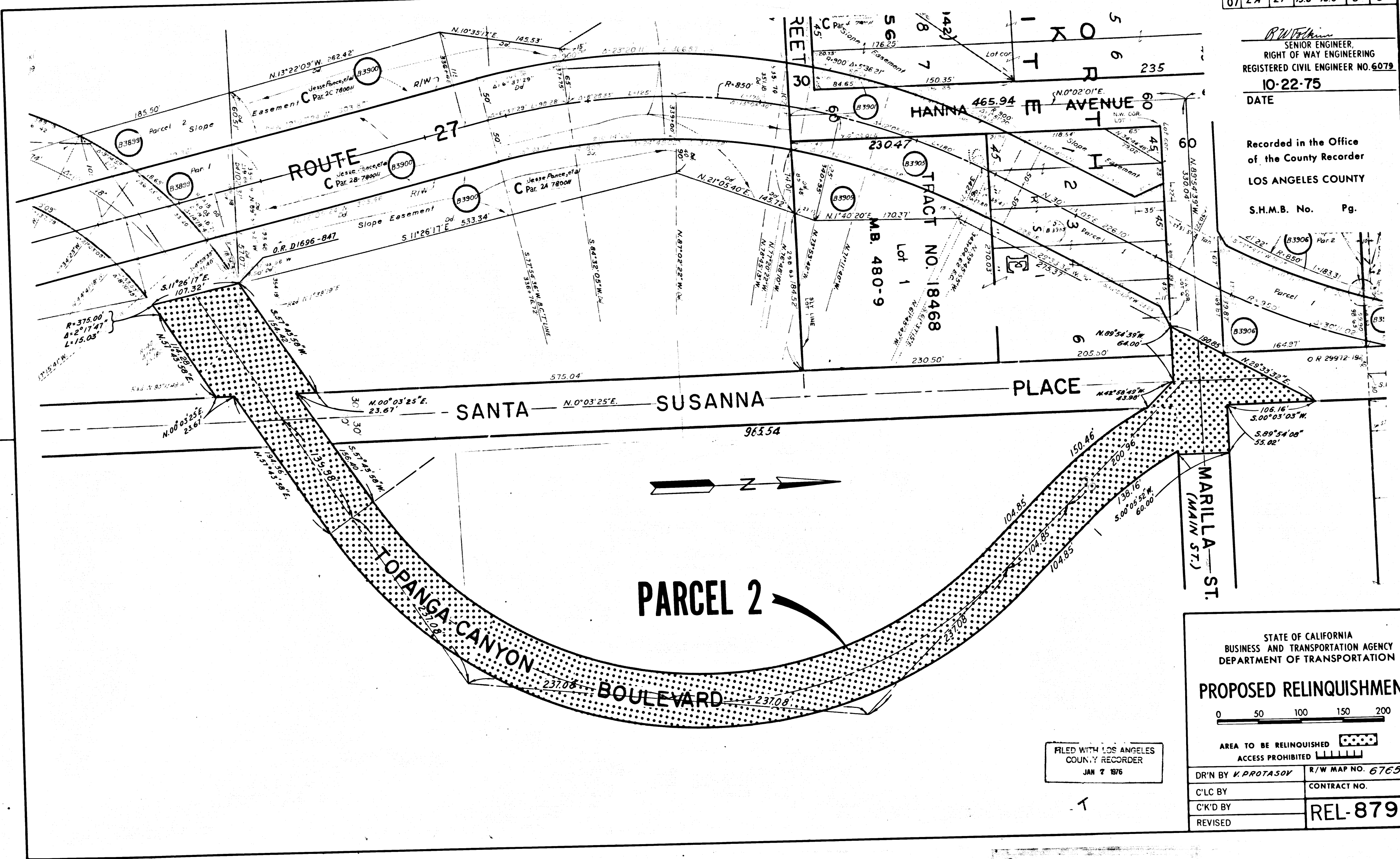
COUNTY ENGINEER'S COPY

13/78
 BOOK 13 PAGE 78

DIST	COUNTY	ROUTE	POST MILES	SHEET NO.	TOTAL SHEETS
07	LA	27	15.8-18.6	3	3

R.W. Felton
 SENIOR ENGINEER,
 RIGHT OF WAY ENGINEERING
 REGISTERED CIVIL ENGINEER NO. 6079
 10-22-75
 DATE

Recorded in the Office
 of the County Recorder
 LOS ANGELES COUNTY
 S.H.M.B. No. Pg.



FILED WITH LOS ANGELES
 COUNTY RECORDER
 JAN 7 1976

STATE OF CALIFORNIA
 BUSINESS AND TRANSPORTATION AGENCY
 DEPARTMENT OF TRANSPORTATION

PROPOSED RELINQUISHMENT

0 50 100 150 200

AREA TO BE RELINQUISHED [Dotted Pattern]
 ACCESS PROHIBITED [Hatched Pattern]

DR'N BY <i>V. PROTASOV</i>	R/W MAP NO. 6765
C/LC BY	CONTRACT NO.
C/K'D BY	REL-879
REVISED	

COUNTY ENGINEER'S COPY

15/74 BOOK 13 PAGE 79