

DIST	COUNTY	ROUTE	POST MILES	SHEET NO.	TOTAL SHEETS
07	LA	210	230/235	1	4

STATE OF CALIFORNIA
 BUSINESS AND TRANSPORTATION AGENCY
 DEPARTMENT OF TRANSPORTATION

William C. Dondie
 CHIEF, RIGHT OF WAY ENGINEERING
 AND UTILITIES RELOCATION BRANCH
 REGISTERED CIVIL ENGINEER NO. 9790

10-22-75
 DATE

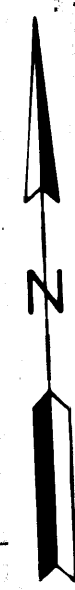
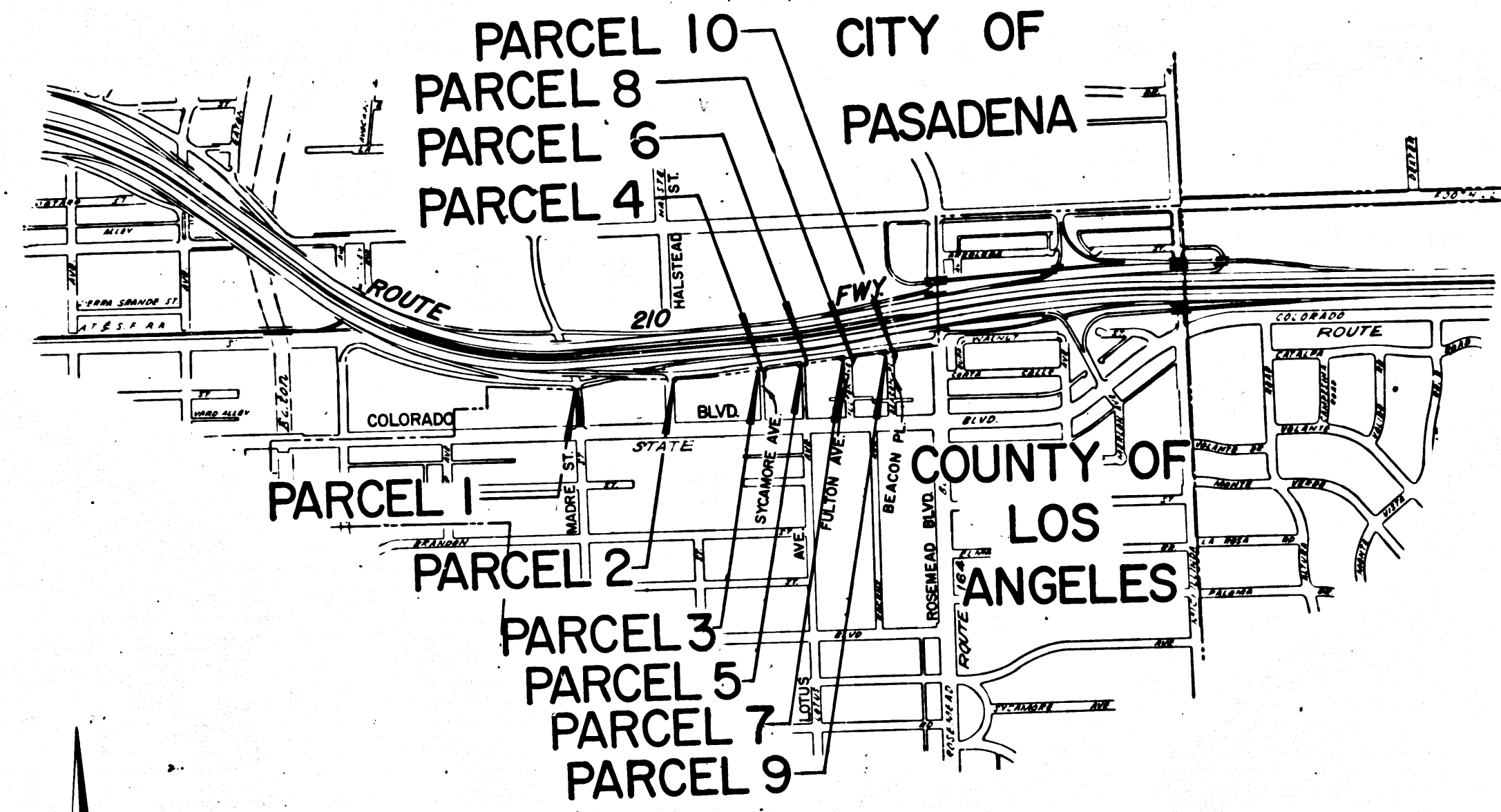
RIGHT OF WAY MAPS OF
 STATE HIGHWAY

Recorded in the Office
 of the County Recorder
 LOS ANGELES COUNTY

IN THE COUNTY OF LOS ANGELES ALONG ROUTE 210 FWY.
 BETWEEN MADRE ST. AND ROSEMEAD BLVD.

S.H.M.B. No. Pg.

3068
 FILED
 AT REQUEST OF
 DEPT. OF PUBLIC WORKS
 JAN. 7, 1976
 MIN. PAST
 IN BOOK 13
 AT PAGE 80
 OF STATE HIGHWAY MAPS
 LOS ANGELES COUNTY, CALIF.
 COUNTY RECORDER
R. [Signature]
 DATE 1/7/76



INTERSTATE
 STATE OF CALIFORNIA
 BUSINESS AND TRANSPORTATION AGENCY
 DEPARTMENT OF TRANSPORTATION

PROPOSED RELINQUISHMENT

0 600 1200 1800 2400

AREA TO BE RELINQUISHED

DR'N BY <i>L. Kuehn</i>	R/W MAP NO. <i>F1218</i>
C'LC BY <i>J. Cotton</i>	CONTRACT NO. <i>155024</i>
C'K'D BY <i>G. Tokora</i>	REL-969
REVISED	

13/80

BOOK 13 PAGE 80

31

DIST.	COUNTY	ROUTE	POST MILES	SHEET NO.	TOTAL SHEETS
07	LA	210	29.0/29.5	2	4

R. W. Collier
 SENIOR TRANSPORTATION ENGINEER
 RIGHT OF WAY ENGINEERING
 REGISTERED CIVIL ENGINEER NO. 6079

10-22-75

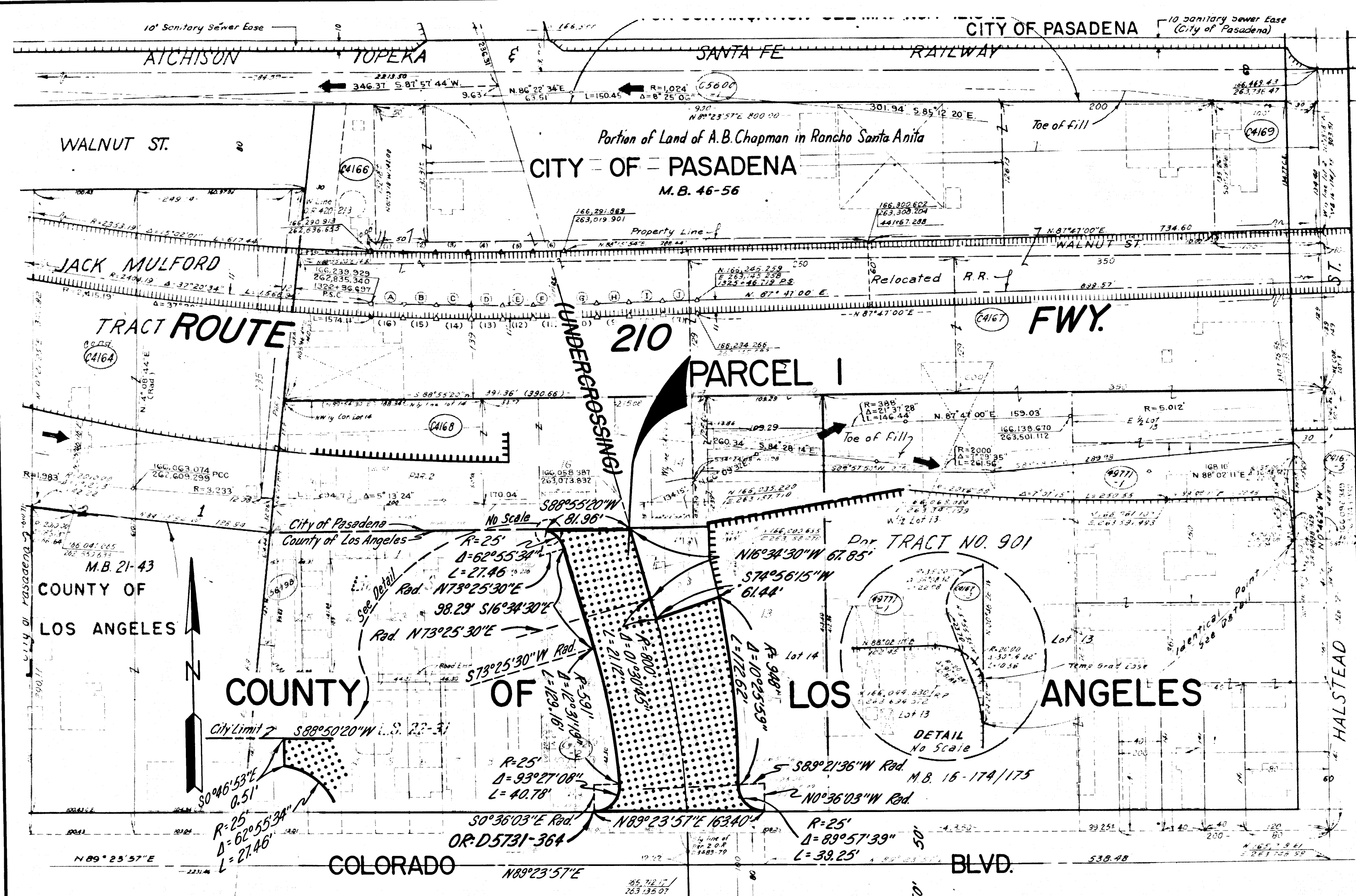
DATE

Recorded in the Office
 of the County Recorder

LOS ANGELES COUNTY

S.H.M.B. No. Pg.

DATE



1) S 88° 52' 44" E 31.02'	11) S 87° 41' 44" W 31.01'
2) S 83° 52' 42" E 31.00'	12) S 87° 52' 12" W 31.02'
3) S 89° 30' 42" S 30.43'	13) S 88° 01' 04" W 31.04'
4) N 89° 51' 51" E 31.00'	14) S 88° 14' 17" W 31.05'
5) N 89° 20' 50" E 31.00'	15) S 88° 32' 03" W 31.06'
6) N 88° 20' 30" E 30.57'	16) S 88° 54' 16" W 31.08'
7) N 38° 34' 06" E 31.00'	17) S 89° 20' 50" W 31.09'
8) N 88° 54' 16" E 31.00'	18) S 89° 51' 51" W 31.11'
9) N 88° 32' 03" E 30.71'	19) N 89° 32' 42" W 31.13'
10) N 88° 4' 17" E 31.00'	20) N 88° 52' 44" W 31.14'
11) N 88° 19' 04" E 31.00'	
12) N 87° 52' 12" E 31.00'	
13) N 87° 41' 44" E 31.00'	

LOS ANGELES COUNTY

INTERSTATE
 STATE OF CALIFORNIA
 BUSINESS AND TRANSPORTATION AGENCY
 DEPARTMENT OF TRANSPORTATION

PROPOSED RELINQUISHMENT

0 50 100 150 200

AREA TO BE RELINQUISHED ACCESS PROHIBITED

DR'N BY <i>U. Kuehn</i>	R/W MAP NO. <i>F1218-13</i>
C'LC BY <i>J. Cotton</i>	CONTRACT NO. <i>155024</i>
C'K'D BY <i>G. Takara</i>	REL-969
REVISED	

FILED WITH LOS ANGELES COUNTY RECORDER
 JAN 7 1976

COUNTY ENGINEER'S COPY

BOOK 13 PAGE 81

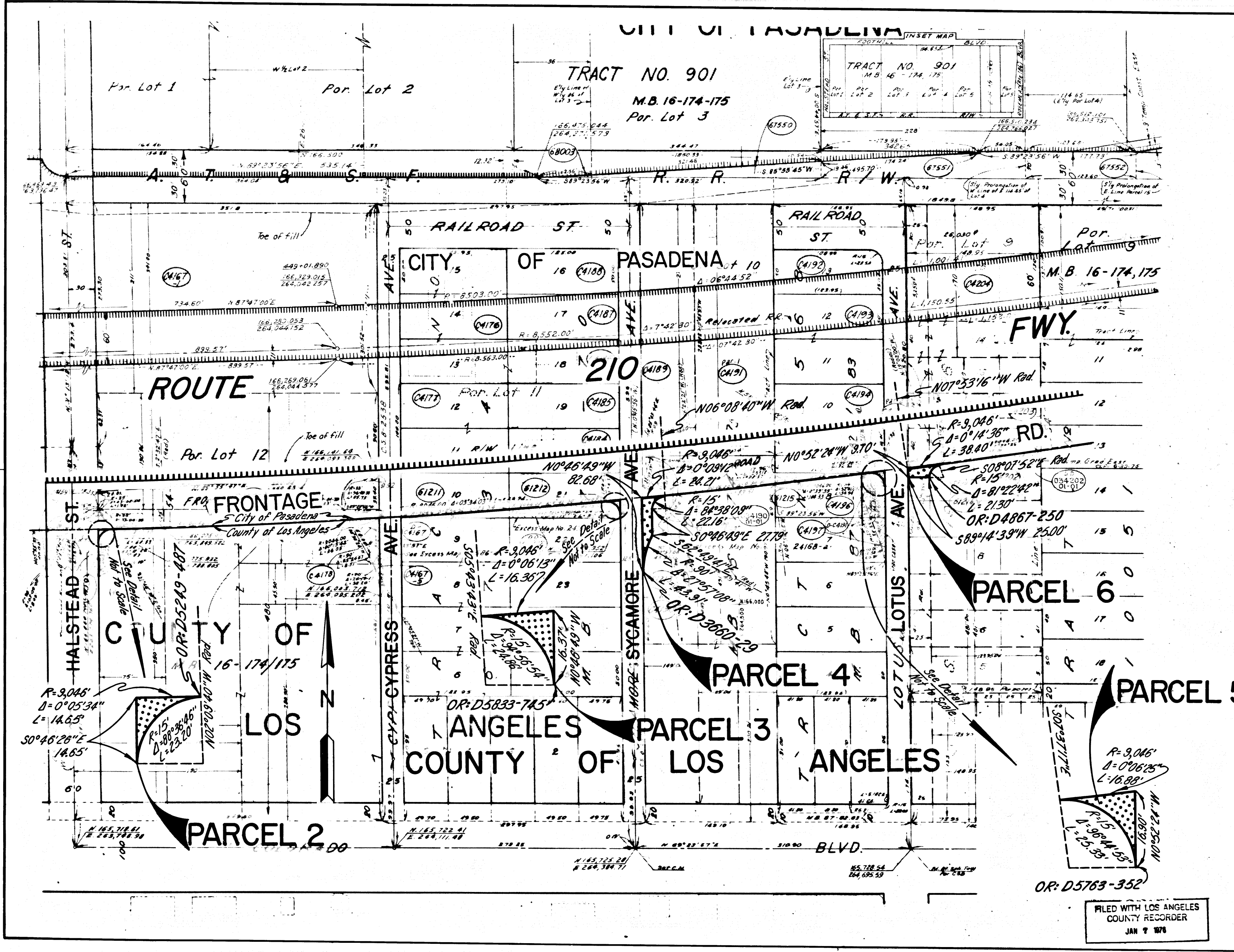
DIST	COUNTY	ROUTE	POST MILES	SHEET NO.	TOTAL SHEETS
07	LA	210	290/29.5	3	4

R. W. Feltner
 SENIOR TRANSPORTATION ENGINEER
 RIGHT OF WAY ENGINEERING
 REGISTERED CIVIL ENGINEER NO 6079

DATE
 10-22-75

Recorded in the Office
 of the County Recorder
 LOS ANGELES COUNTY

S.H.M.B. No. Pg.
 DATE



INTERSTATE
 STATE OF CALIFORNIA
 BUSINESS AND TRANSPORTATION AGENCY
 DEPARTMENT OF TRANSPORTATION

PROPOSED RELINQUISHMENT

0 50 100 150 200

AREA TO BE RELINQUISHED

ACCESS PROHIBITED

DR'N BY <i>U. Kuehn</i>	R/W MAP NO <i>FR19-1</i>
CLC BY <i>J. Cotton</i>	CONTRACT NO <i>155024</i>
C'K'D BY <i>G. Takara</i>	REL-969
REVISED	

FILED WITH LOS ANGELES
 COUNTY RECORDER
 JAN 7 1976

COUNTY ENGINEER'S COPY

BOOK 13 PAGE 82

DIST	COUNTY	ROUTE	POST MILES	SHEET NO.	TOTAL SHEETS
07	LA	210	290/295	4	4

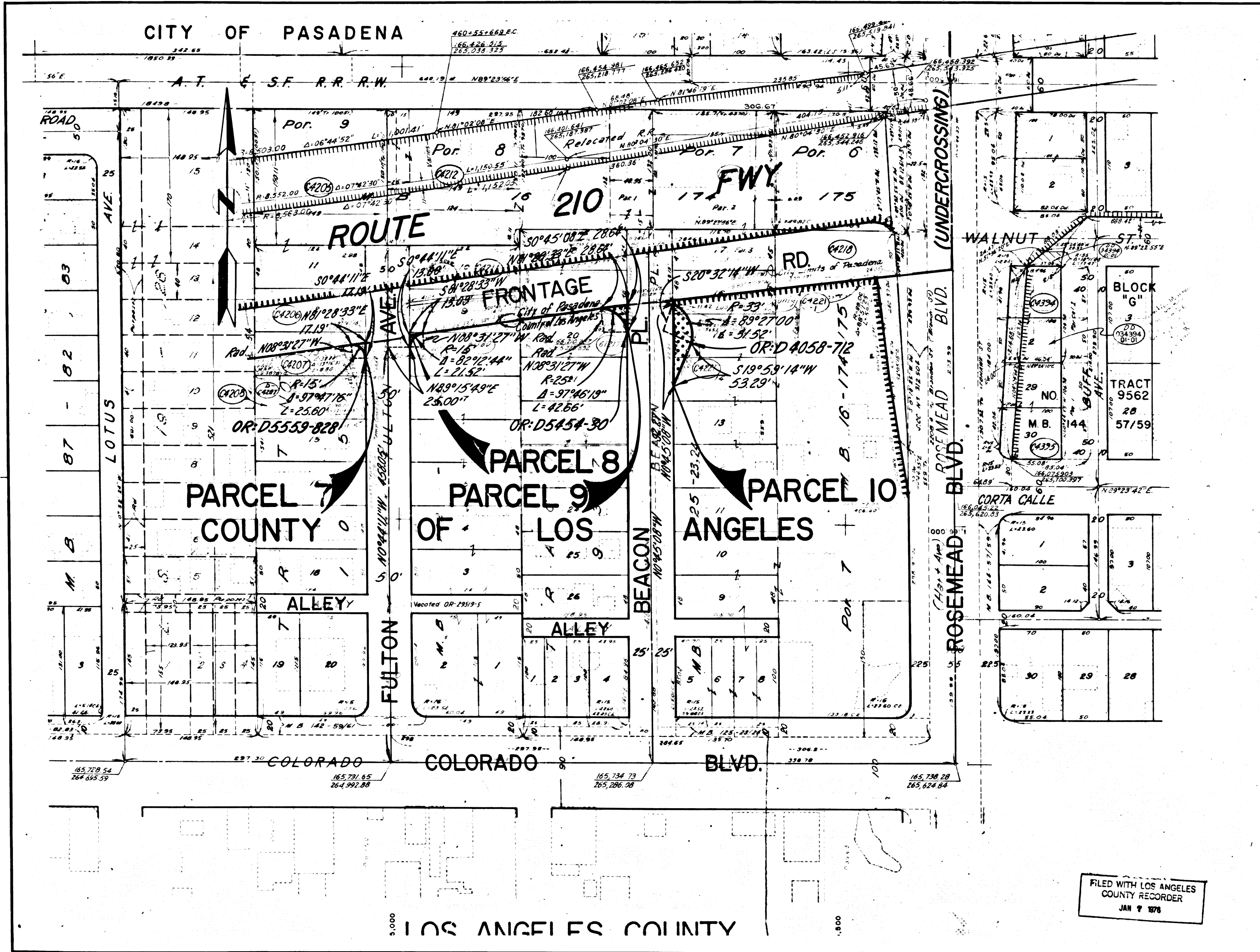
R.W. Walker
 SENIOR TRANSPORTATION ENGINEER
 RIGHT OF WAY ENGINEERING
 REGISTERED CIVIL ENGINEER NO. 6079

10-22-75
 DATE

Recorded in the Office
 of the County Recorder
 LOS ANGELES COUNTY

S.H.M.B. No. Pg.

DATE



INTERSTATE
 STATE OF CALIFORNIA
 BUSINESS AND TRANSPORTATION AGENCY
 DEPARTMENT OF TRANSPORTATION
PROPOSED RELINQUISHMENT

0 50 100 150 200

AREA TO BE RELINQUISHED [Pattern]
 ACCESS PROHIBITED [Pattern]

DR'N BY <i>U. Kuehn</i>	R/W MAP NO. <i>F1219-2</i>
C'LC BY <i>J. Cotton</i>	CONTRACT NO. <i>155024</i>
C'K'D BY <i>G. Takara</i>	REL-969
REVISED	

FILED WITH LOS ANGELES
 COUNTY RECORDER
 JAN 9 1976

COUNTY ENGINEER'S COPY

12/83

BOOK 13 PAGE 83