

3:01 PM

13/24

BOOK 13 PAGE 84

STATE OF CALIFORNIA
 BUSINESS AND TRANSPORTATION AGENCY
 DEPARTMENT OF TRANSPORTATION

RIGHT OF WAY MAPS OF
 STATE HIGHWAY

In the City of Compton, along Route 91 Fwy,
 between Central Ave. and Santa Fe Ave.



DIST	COUNTY	ROUTE	POST MILES	SHEET NO.	TOTAL SHEETS
07	LA	91	8.5/10.4	1	15

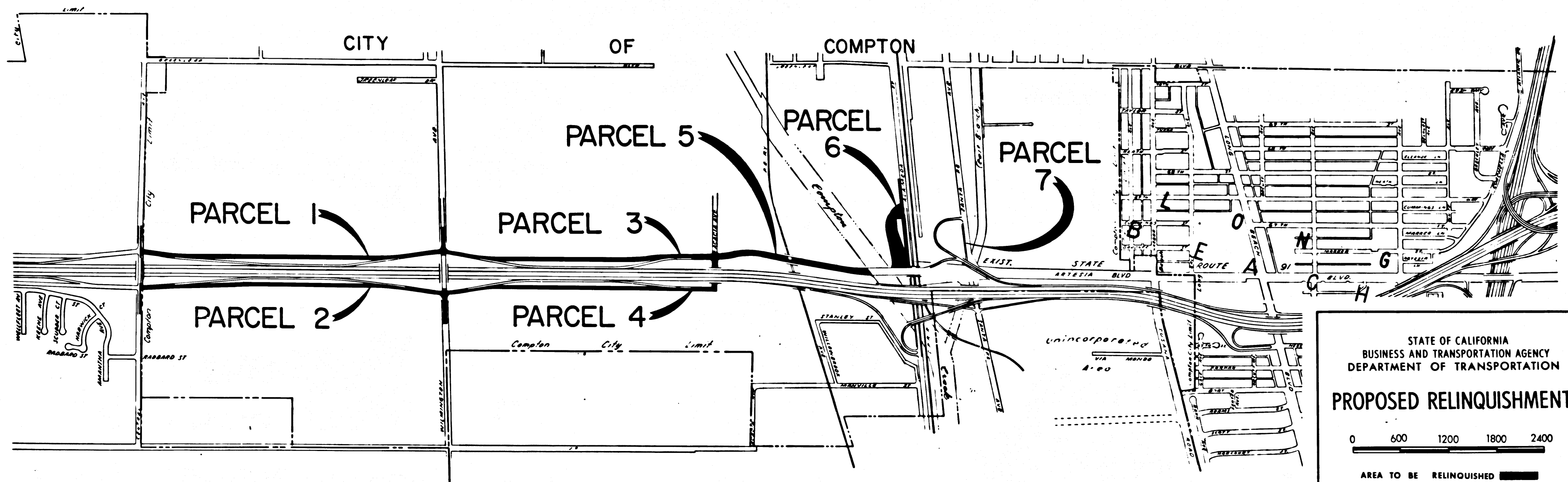
3529
 3528
 FILED
 AT REQUEST OF
 DEPT. OF PUBLIC WORKS
 J. M. 24, 1976
 1 MIN. PAST 3 PM
 IN BOOK 13
 AS PAGE 84
 OF STATE HIGHWAY MAPS
 FOR ANGELES COUNTY, CALIF.
 COUNTY RECORDER
 [Signature]
 COUNTY ENGINEER
 [Signature]

William C. Davis
 CHIEF, RIGHT OF WAY ENGINEERING
 AND UTILITIES RELOCATION BRANCH
 REGISTERED CIVIL ENGINEER NO. 9790

9-30-75
 DATE

Recorded in the Office
 of the County Recorder
 LOS ANGELES COUNTY

S.H.M.B. No. Pg.
 DATE:



STATE OF CALIFORNIA
 BUSINESS AND TRANSPORTATION AGENCY
 DEPARTMENT OF TRANSPORTATION

PROPOSED RELINQUISHMENT

0 600 1200 1800 2400

AREA TO BE RELINQUISHED

DR'N BY E.M. & V.J.R.	R/W MAP NO. F1089-1 to 6, F1090-1 to 7, F1091-1
C/LC BY J.C.	CONTRACT NO. 07-040944 & 07-009514
C/K'D BY A.M.	REL- 867
REVISED	

38

COUNTY ENGINEER'S COPY

DIST	COUNTY	ROUTE	POST MILES	SHEET NO.	TOTAL SHEETS
07	LA	91	8.5	2	15

Carla R. Repelina
 SENIOR ENGINEER,
 RIGHT OF WAY ENGINEERING
 REGISTERED CIVIL ENGINEER NO. 14117

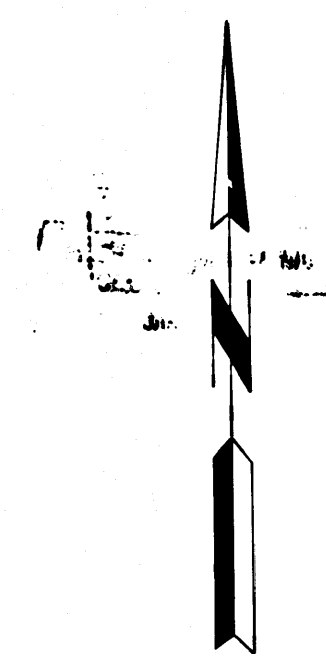
9-30-75
 DATE

Recorded in the Office
 of the County Recorder
 LOS ANGELES COUNTY

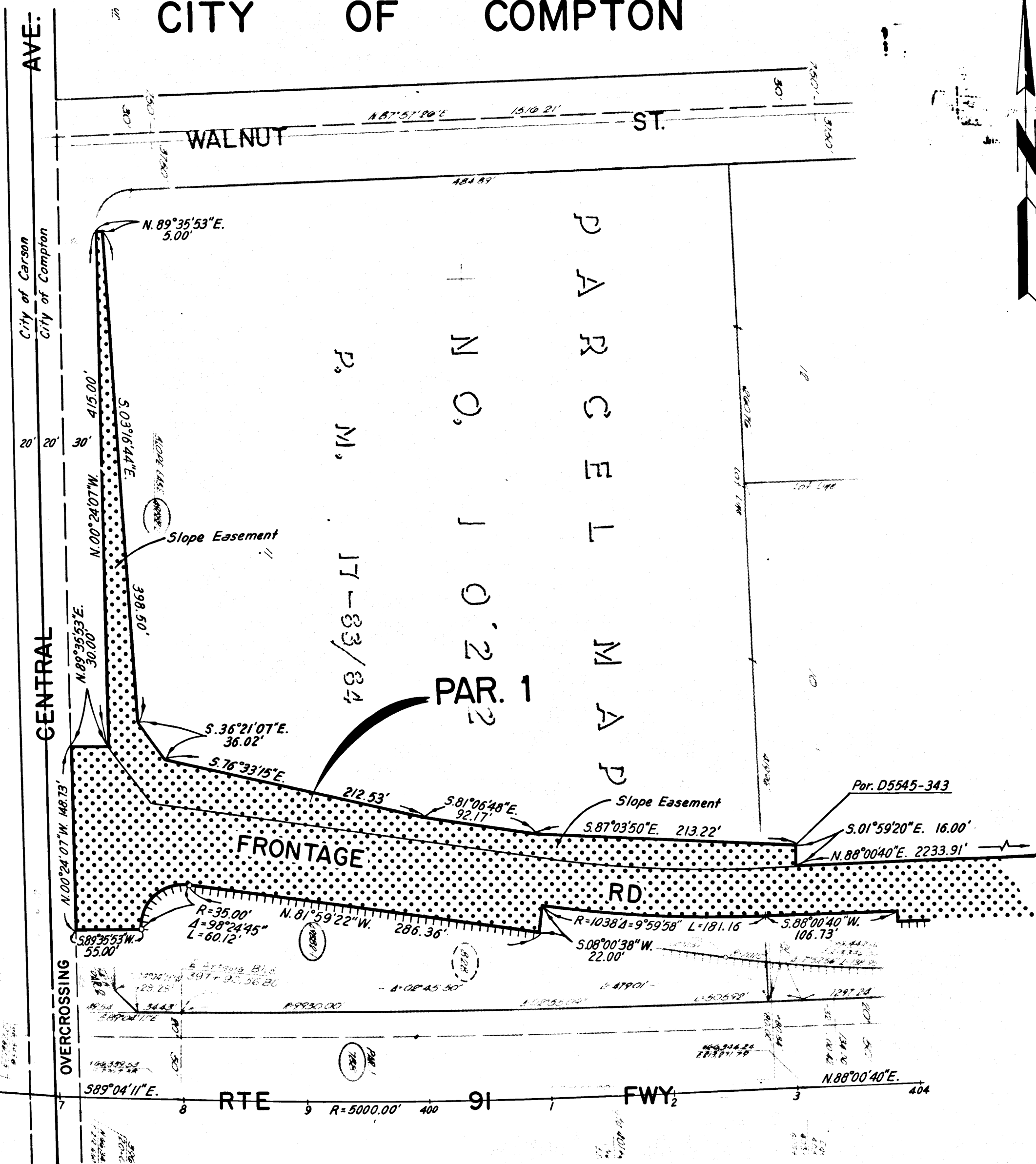
S.H.M.B. No. Pg.

DATE:

FILED WITH LOS ANGELES
 COUNTY RECORDER
 JAN 21 1976



CITY OF COMPTON



SEE SHEET NO. 4

STATE OF CALIFORNIA
 BUSINESS AND TRANSPORTATION AGENCY
 DEPARTMENT OF TRANSPORTATION

PROPOSED RELINQUISHMENT

0 50 100 150 200

AREA TO BE RELINQUISHED

ACCESS PROHIBITED

DR'N BY E. M. & V. J. R.	R/W MAP NO. F1089-1
C'LC BY J. C.	CONTRACT NO. 07-040944 8.07-009514
C'K'D BY A. M.	REL-867
REVISED	

13/86

DIST	COUNTY	ROUTE	POST MILES	SHEET NO.	TOTAL SHEETS
07	LA	91	8.5	3	15

FILED WITH LOS ANGELES COUNTY RECORDER
JAN 21 1975

Carla B. Muller
SENIOR ENGINEER,
RIGHT OF WAY ENGINEERING
REGISTERED CIVIL ENGINEER NO. 14117

9-30-75
DATE

Recorded in the Office
of the County Recorder
LOS ANGELES COUNTY

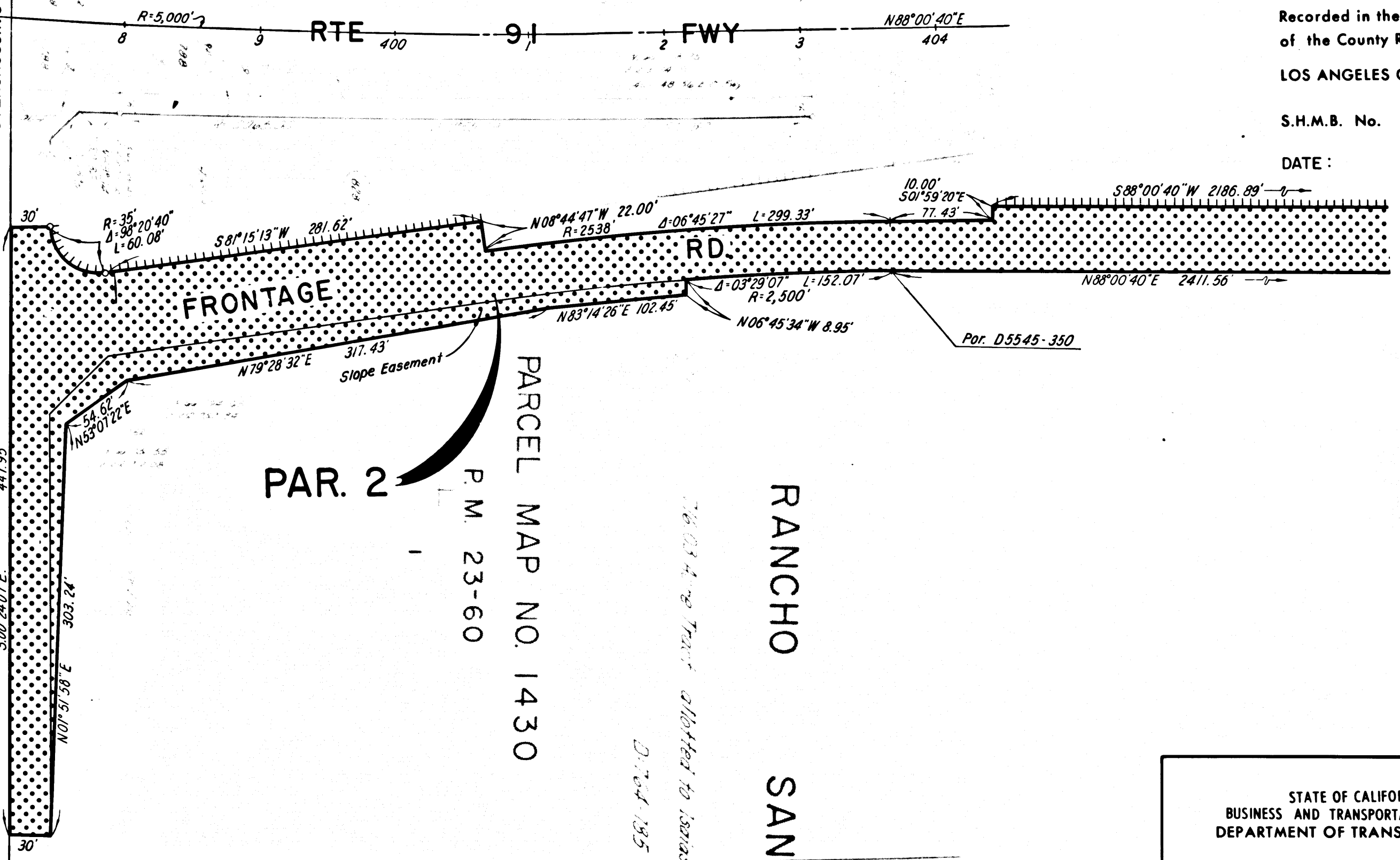
S.H.M.B. No. Pg.

DATE:

SEE SHEET NO. 4

CITY OF COMPTON

City of Carson
 City of Compton
 OVERCROSSING
 AVE.
 CENTRAL
 City of Carson
 City of Compton



PAR. 2
P.M. 23-60
PARCEL MAP NO. 1430

RANCHO SAN PEC

STATE OF CALIFORNIA
BUSINESS AND TRANSPORTATION AGENCY
DEPARTMENT OF TRANSPORTATION

PROPOSED RELINQUISHMENT

0 50 100 150 200

AREA TO BE RELINQUISHED

ACCESS PROHIBITED

DR'N BY E.M. & V.J.R.	R/W MAP NO. F1089-2
C'LC BY J.C.	CONTRACT NO. 07-040944 & 07-009514
C'K'D BY A.M.	REL-867
REVISED	

12/87

DIST	COUNTY	ROUTE	POST MILES	SHEET NO.	TOTAL SHEETS
07	LA	91	8.7	4	15

FILED WITH LOS ANGELES COUNTY RECORDER
JAN 21 1978

Charles B. Doolittle
SENIOR ENGINEER
RIGHT OF WAY ENGINEERING
REGISTERED CIVIL ENGINEER NO. 14117

9-30-75
DATE

Recorded in the Office
of the County Recorder
LOS ANGELES COUNTY

S.H.M.B. No. Pg.
DATE:

PARCEL MAP NO. 1022

P.M. 17-83/84

PAR. 1

SEE SHEET NO. 2

SEE SHEET NO. 3

Slope Easement
Par. D5545-343
S.01°59'20"E. 16.00'

S.88°00'40"W. 106.73'
N.01°59'20"W. 10.00'

N.88°00'40"E.

2233.91'

FRONTAGE RD

S.88°00'40"W.

2152.78'

RTE 91 Fwy (Artesia Blvd)

N.88°00'40"E.

410

FRONTAGE RD

S.88°00'40"W. 77.43'

S.01°59'20"E. 10.00'

S.88°00'40"W.

2186.89'

N.88°00'40"E.

2411.56'

PAR. 2

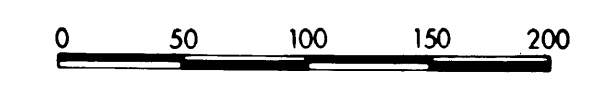
PARCEL MAP NO. 1430

P.M. 23-60

CITY OF COMPTON

STATE OF CALIFORNIA
BUSINESS AND TRANSPORTATION AGENCY
DEPARTMENT OF TRANSPORTATION

PROPOSED RELINQUISHMENT



AREA TO BE RELINQUISHED [Dotted Pattern]
ACCESS PROHIBITED [Hatched Pattern]

DR'N BY E.M. & V.J.R.	R/W MAP NO. F1089-3
C'LC BY J.C.	CONTRACT NO. 07-040944 & 07-009514
C'K'D BY A.M.	REL-867
REVISED	

COUNTY ENGINEER'S COPY

SEE SHEET NO. 5

DIST	COUNTY	ROUTE	POST MILES	SHEET NO.	TOTAL SHEETS
07	LA	91	8.9	5	15

FILED WITH LOS ANGELES COUNTY RECORDER
JAN 21 1978

Carl B. Swellman
SENIOR ENGINEER,
RIGHT OF WAY ENGINEERING
REGISTERED CIVIL ENGINEER NO. 14117
9-30-75
DATE

Recorded in the Office
of the County Recorder
LOS ANGELES COUNTY

S.H.M.B. No. Pg.
DATE:

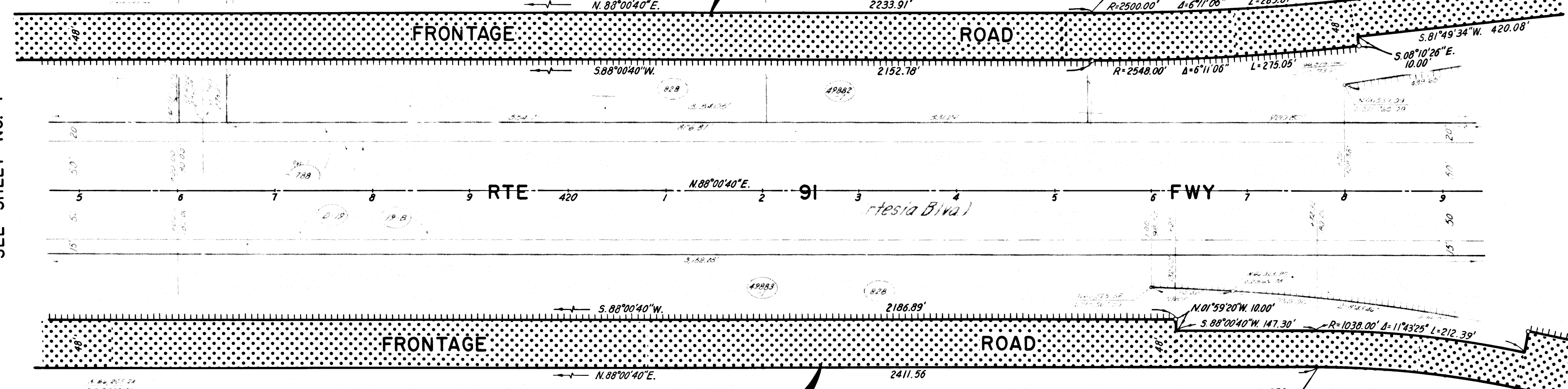
SEE SHEET NO. 6

SEE SHEET NO. 7

PARCEL MAP NO. 1022

ANDERSON AVE.

PAR. 1
P. M. 15-83/84



PAR. 2

PARCEL MAP NO. 1430

P. M. 23-60

CITY OF COMPTON

STATE OF CALIFORNIA
BUSINESS AND TRANSPORTATION AGENCY
DEPARTMENT OF TRANSPORTATION

PROPOSED RELINQUISHMENT

0 50 100 150 200

AREA TO BE RELINQUISHED [Stippled Pattern]
ACCESS PROHIBITED [Hatched Pattern]

DR'N BY E. M. & V. J. R.	R/W MAP NO. F1089-4
C'L'C BY J. C.	CONTRACT NO. 07-040944 & 07-009514
C'K'D BY A. M.	REL-867
REVISED	

SEE SHEET NO. 4

13/90

BOOK 13 PAGE 90

DIST	COUNTY	ROUTE	POST MILES	SHEET NO.	TOTAL SHEETS
07	LA	91	9.1	7	15

FILED WITH LOS ANGELES COUNTY RECORDER
JAN 21 1976

Charles R. Appell
SENIOR ENGINEER,
RIGHT OF WAY ENGINEERING
REGISTERED CIVIL ENGINEER NO. 14117

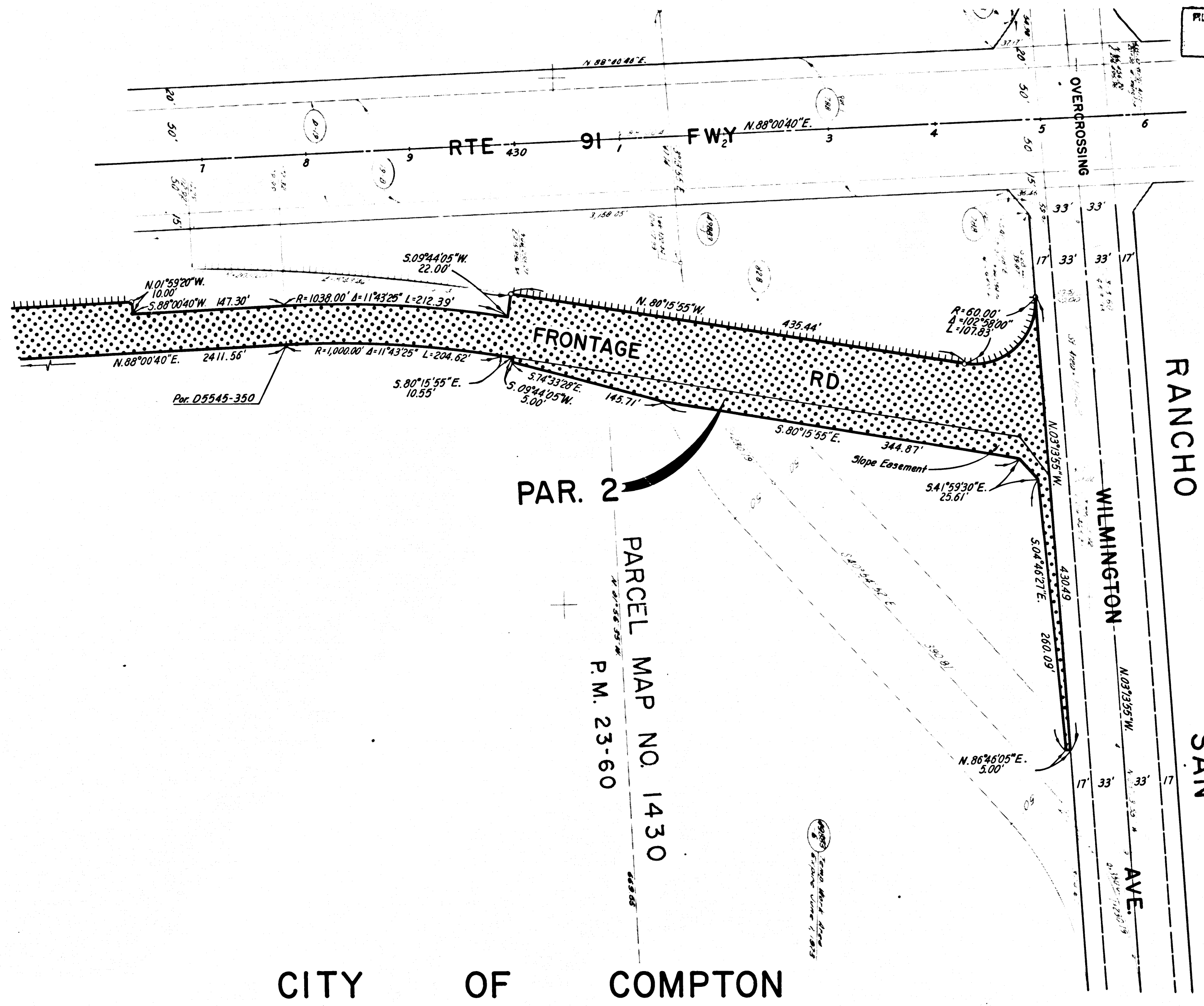
9-30-75
DATE

Recorded in the Office
of the County Recorder
LOS ANGELES COUNTY

S.H.M.B. No. Pg.

DATE:

SEE SHEET NO. 5



RANCHO

SAN

WILMINGTON

AVE.

PAR. 2

PARCEL MAP NO. 1430
P.M. 23-60

CITY OF COMPTON

STATE OF CALIFORNIA
BUSINESS AND TRANSPORTATION AGENCY
DEPARTMENT OF TRANSPORTATION

PROPOSED RELINQUISHMENT

0 50 100 150 200

AREA TO BE RELINQUISHED

ACCESS PROHIBITED

DR'N BY E.M. & V.J.R.	R/W MAP NO. F1089-6
C'LC BY J.C.	CONTRACT NO. 07-040944 & 07-009514
C'K'D BY A.M.	REL-867
REVISED	

COUNTY ENGINEER'S COPY

13/92

BOOK 13 PAGE 92

DIST	COUNTY	ROUTE	POST MILES	SHEET NO.	TOTAL SHEETS
07	LA	91	9.2	9	15

FILED WITH LOS ANGELES COUNTY RECORDER
JAN 21 1976

Carla B. Bellina
SENIOR ENGINEER,
RIGHT OF WAY ENGINEERING
REGISTERED CIVIL ENGINEER NO. 14117

9-30-75
DATE

Recorded in the Office
of the County Recorder
LOS ANGELES COUNTY

S.H.M.B. No. Pg.

DATE:

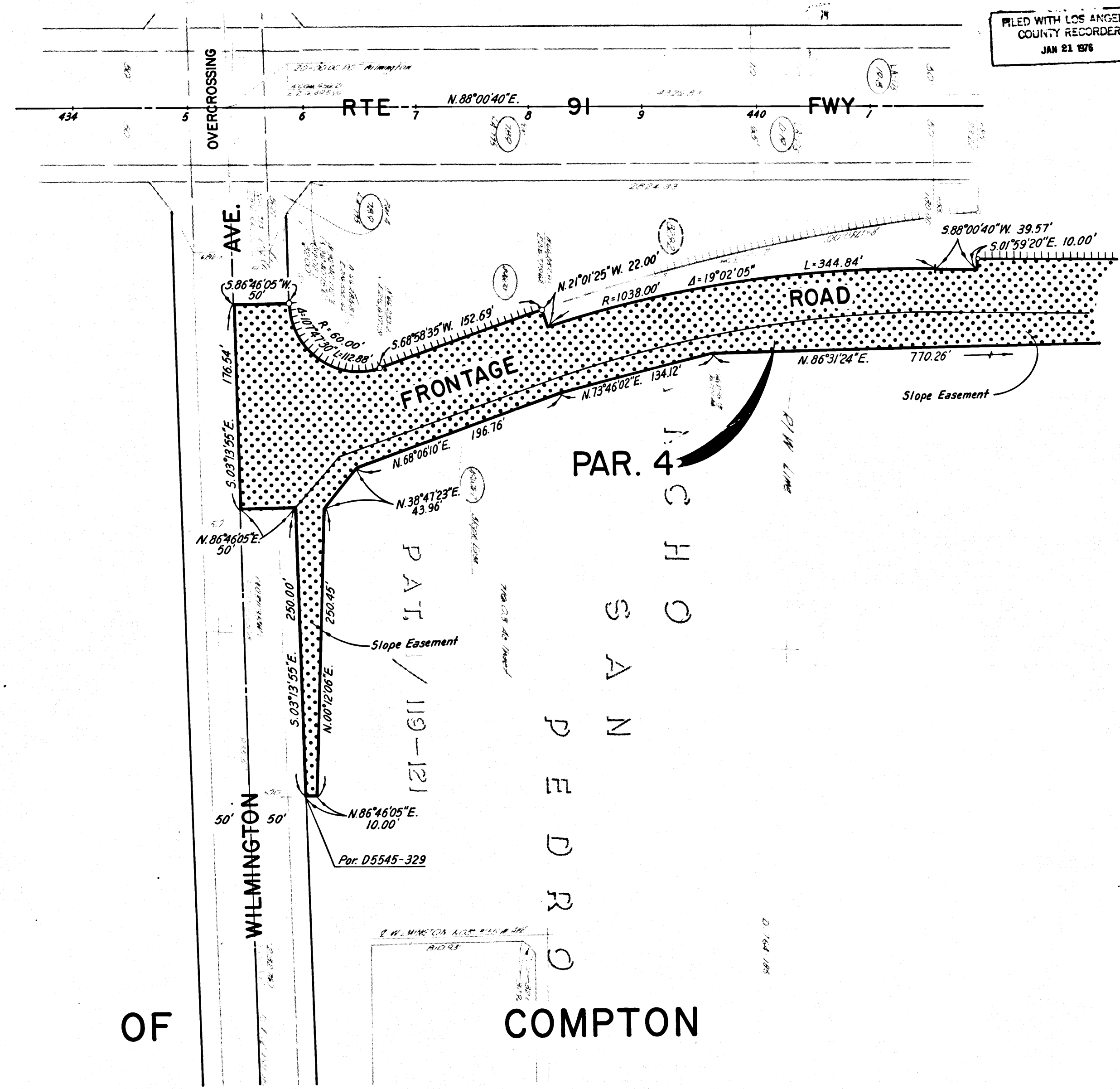
SEE SHEET NO. 10



CITY

OF

COMPTON



STATE OF CALIFORNIA
BUSINESS AND TRANSPORTATION AGENCY
DEPARTMENT OF TRANSPORTATION

PROPOSED RELINQUISHMENT

0 50 100 150 200

AREA TO BE RELINQUISHED

ACCESS PROHIBITED

DR'N BY E.M. & V.J.R.	R/W MAP NO. F1090-2
C'LC BY J.C.	CONTRACT NO. 07-040944 & 07-009514
C'KD BY A.M.	REL-867
REVISED	

COUNTY ENGINEER'S COPY

13/93

BOOK 13 PAGE 93

DIST	COUNTY	ROUTE	POST MILES	SHEET NO	TOTAL SHEETS
07	LA	91	9.5	10	15

FILED WITH LOS ANGELES
COUNTY RECORDER
JAN 21 1976

PM. 26-53/54

Carla B. Walker
SENIOR ENGINEER,
RIGHT OF WAY ENGINEERING
REGISTERED CIVIL ENGINEER NO. 14117

9-30-75
DATE

Recorded in the Office
of the County Recorder
LOS ANGELES COUNTY

S.H.M.B. No. Pg.

DATE :

R A N C H O

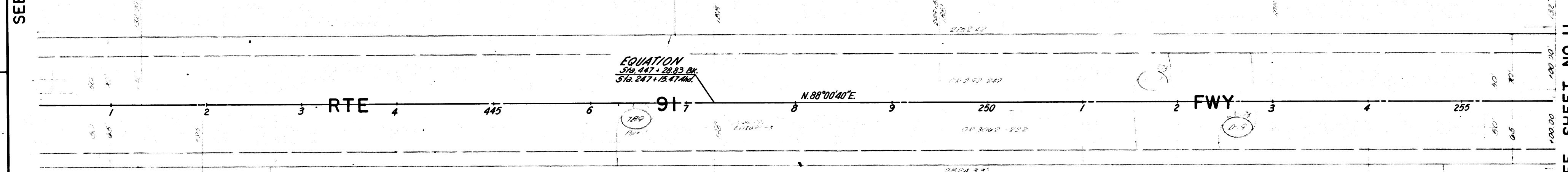
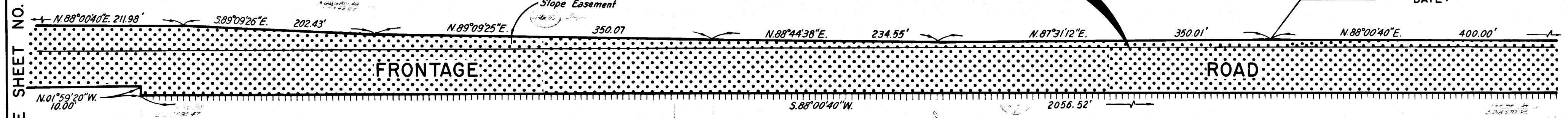
S A N

P D R

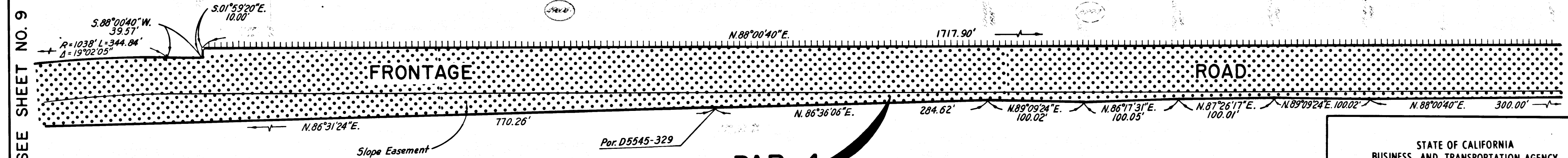
PAR. 3

Par. D5545-334

SEE SHEET NO. 8



SEE SHEET NO. 9



PAR. 4

PAT. 1/119-121

CITY OF COMPTON

STATE OF CALIFORNIA
BUSINESS AND TRANSPORTATION AGENCY
DEPARTMENT OF TRANSPORTATION

PROPOSED RELINQUISHMENT

0 50 100 150 200

AREA TO BE RELINQUISHED

ACCESS PROHIBITED

DR'N BY E. M. & V.J.R.	R/W MAP NO. F1090-3
C'LC BY J.C.	CONTRACT NO. 07-040944 & 07-009514
C'K'D BY A.M.	REL-867
REVISED	

COUNTY ENGINEER'S COPY

12/94

BOOK 13-PAGE 94

DIST	COUNTY	ROUTE	POST MILES	SHEET NO.	TOTAL SHEETS
07	LA	91	9.6	11	15

FILED WITH LOS ANGELES COUNTY RECORDER
JAN 21 1975

PARCEL MAP NO. 1604

P.M. 26-53/54

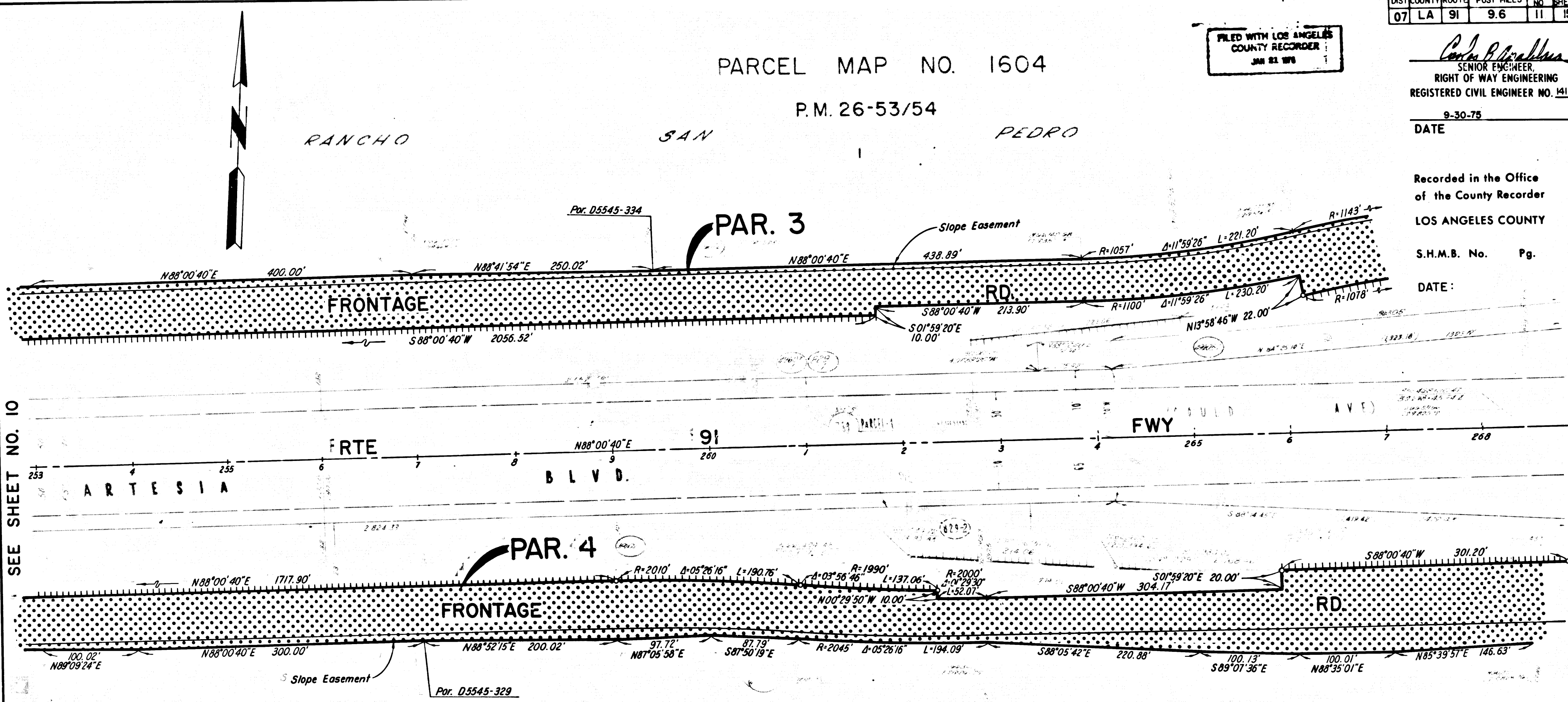
RANCHO

SAN

PEDRO

Carla B. ...
SENIOR ENGINEER
RIGHT OF WAY ENGINEERING
REGISTERED CIVIL ENGINEER NO. 14117
9-30-75
DATE

Recorded in the Office
of the County Recorder
LOS ANGELES COUNTY
S.H.M.B. No. Pg.
DATE:



SEE SHEET NO. 10

SEE SHEET NO. 12

(CITY OF COMPTON

STATE OF CALIFORNIA
BUSINESS AND TRANSPORTATION AGENCY
DEPARTMENT OF TRANSPORTATION

PROPOSED RELINQUISHMENT

0 50 100 150 200

AREA TO BE RELINQUISHED ACCESS PROHIBITED

DR'N BY E.M. & V.J.R.	R/W MAP NO. F1090-4
C'LC BY J.C.	CONTRACT NO. 07-040944 & 07-009514
C'K'D BY A.M.	REL-867
REVISED	

COUNTY ENGINEER'S COPY

13/95

BOOK 13 PAGE 95

DIST	COUNTY	ROUTE	POST MILES	SHEET NO.	TOTAL SHEETS
07	LA	91	9.9	12	15

FILED WITH LOS ANGELES COUNTY RECORDER
JAN 21 1976

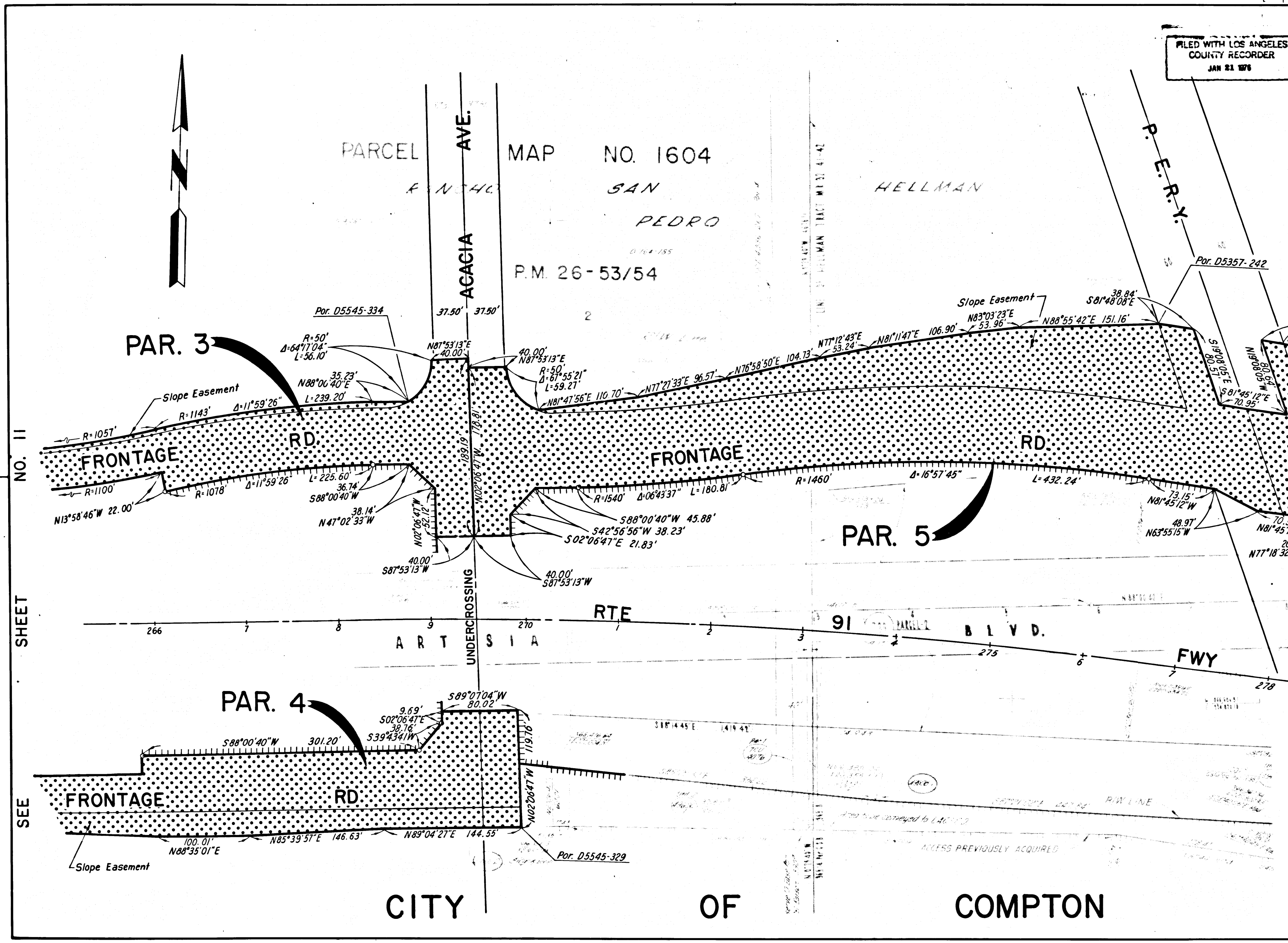
Charles B. Spallone
SENIOR ENGINEER,
RIGHT OF WAY ENGINEERING
REGISTERED CIVIL ENGINEER NO. 14117

9-30-75
DATE

Recorded in the Office of the County Recorder
LOS ANGELES COUNTY

S.H.M.B. No. Pg.

DATE:



SHEET NO. 11

SEE SHEET NO. 13

STATE OF CALIFORNIA
BUSINESS AND TRANSPORTATION AGENCY
DEPARTMENT OF TRANSPORTATION

PROPOSED RELINQUISHMENT

0 50 100 150 200

AREA TO BE RELINQUISHED

ACCESS PROHIBITED

DR'N BY E.M. & V.J.R.	R/W MAP NO. F1090-5
C'LC BY J.C.	CONTRACT NO. 07-040944 & 07-009514
C'K'D BY A.M.	REL-867
REVISED	

CITY OF COMPTON

COUNTY ENGINEER'S COPY

13/96

BOOK 13 PAGE 96

DIST	COUNTY	ROUTE	POST MILES	SHEET NO.	TOTAL SHEETS
07	LA	91	10.1	13	15

FILED WITH LOS ANGELES COUNTY RECORDER
JAN 21 1976

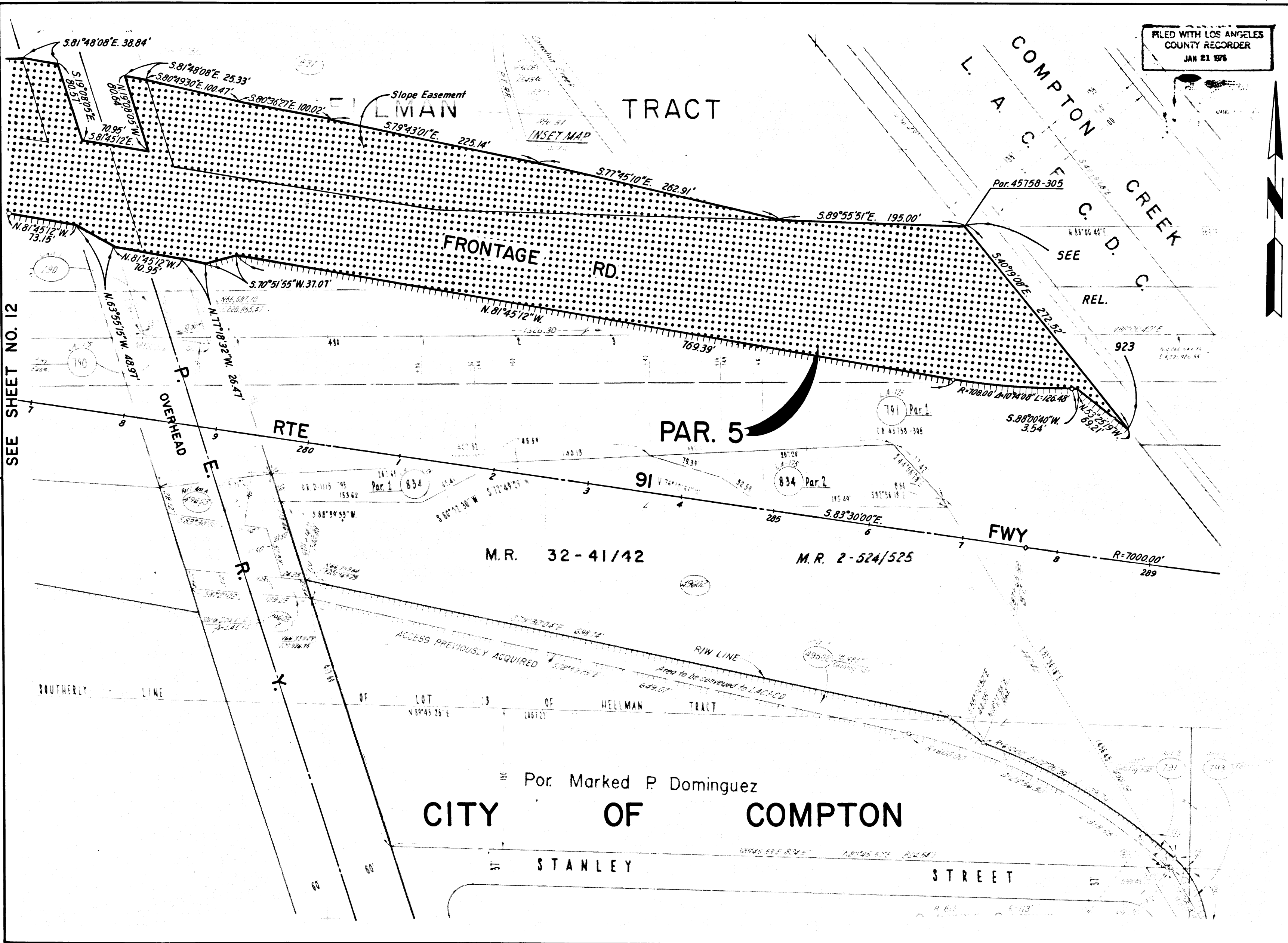
Carlos B. Amador
SENIOR ENGINEER
RIGHT OF WAY ENGINEERING
REGISTERED CIVIL ENGINEER NO. 14117

9-30-75
DATE

Recorded in the Office
of the County Recorder
LOS ANGELES COUNTY

S.H.M.B. No. Pg.

DATE:



STATE OF CALIFORNIA
BUSINESS AND TRANSPORTATION AGENCY
DEPARTMENT OF TRANSPORTATION

PROPOSED RELINQUISHMENT

0 50 100 150 200

AREA TO BE RELINQUISHED ACCESS PROHIBITED

DR'N BY E.M. & V.J.R.	R/W MAP NO. F1090-6
C'LC BY J.C.	CONTRACT NO. 07-040944 & 07-009514
C'K'D BY A.M.	REL-867
REVISED	

COUNTY ENGINEER'S COPY

13/97

BOOK 13 PAGE 97

DIST	COUNTY	ROUTE	POST MILES	SHEET NO.	TOTAL SHEETS
07	LA	91	10.3	14	15

FILED WITH LOS ANGELES
COUNTY RECORDER
JAN 21 1976

Charles B. Appleman
SENIOR ENGINEER,
RIGHT OF WAY ENGINEERING
REGISTERED CIVIL ENGINEER NO. 14117

DATE 9-30-75

Recorded in the Office
of the County Recorder
LOS ANGELES COUNTY

S.H.M.B. No. Pg.
DATE:

BLVD.

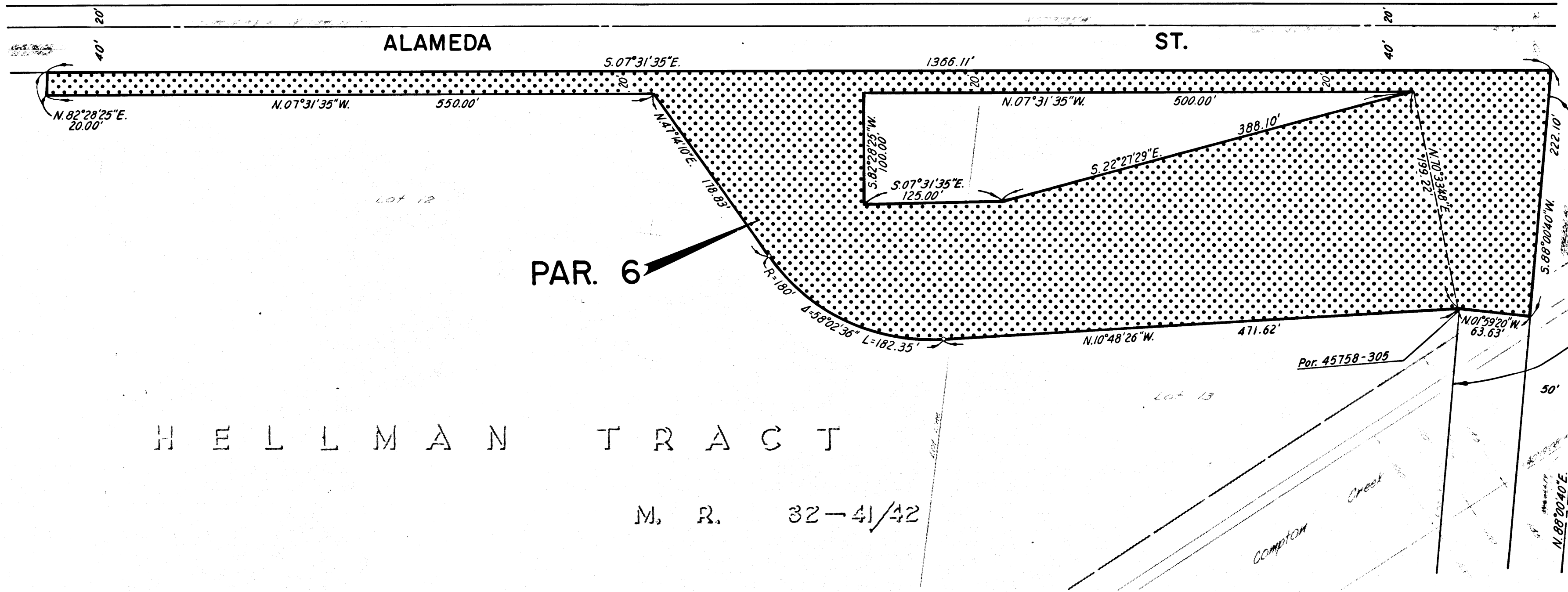
SEE REL 923

ARTESIA

RTE 91 FWY

SOUTHERN PACIFIC RAILROAD COMPANY

ALAMEDA ST.



PAR. 6

HELLMAN TRACT

M. R. 32-41/42

CITY OF COMPTON

STATE OF CALIFORNIA
BUSINESS AND TRANSPORTATION AGENCY
DEPARTMENT OF TRANSPORTATION

PROPOSED RELINQUISHMENT

0 50 100 150 200

AREA TO BE RELINQUISHED

ACCESS PROHIBITED

DR'N BY E.M. & V.J.R.	R/W MAP NO. F1090-7
C'LC BY J.C.	CONTRACT NO. 07-040944 & 07-009514
C'K'D BY A.M.	REL-867
REVISED	

COUNTY ENGINEER'S COPY

13/98

DIST	COUNTY	ROUTE	POST MILES	SHEET NO.	TOTAL SHEETS
07	LA	91	10.4	15	15

FILED WITH LOS ANGELES
COUNTY RECORDER
JAN 21 1976

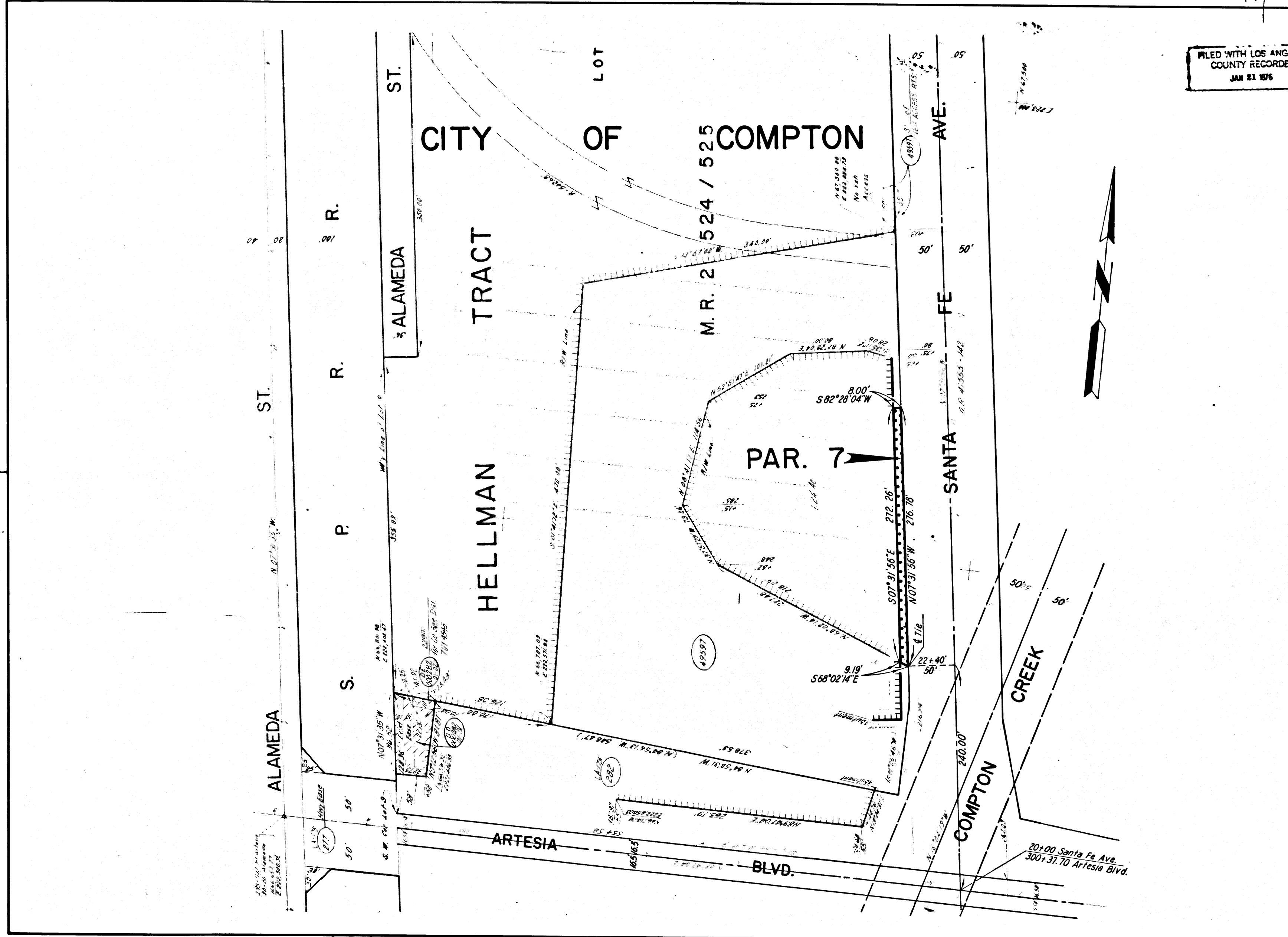
Carl B. ...
SENIOR ENGINEER,
RIGHT OF WAY ENGINEERING
REGISTERED CIVIL ENGINEER NO. 14117

9-30-75
DATE

Recorded in the Office
of the County Recorder
LOS ANGELES COUNTY

S.H.M.B. No. Pg.

DATE:



STATE OF CALIFORNIA
BUSINESS AND TRANSPORTATION AGENCY
DEPARTMENT OF TRANSPORTATION

PROPOSED RELINQUISHMENT

0 50 100 150 200

AREA TO BE RELINQUISHED

ACCESS PROHIBITED

DR'N BY E. M. & V.J.R.	R/W MAP NO. F1091-1
C'LC BY J.C.	CO. TRACT NO. 07-040944 & 07-009514
C'K'D BY A.M.	REL-867
REVISED	

COUNTY ENGINEER'S COPY