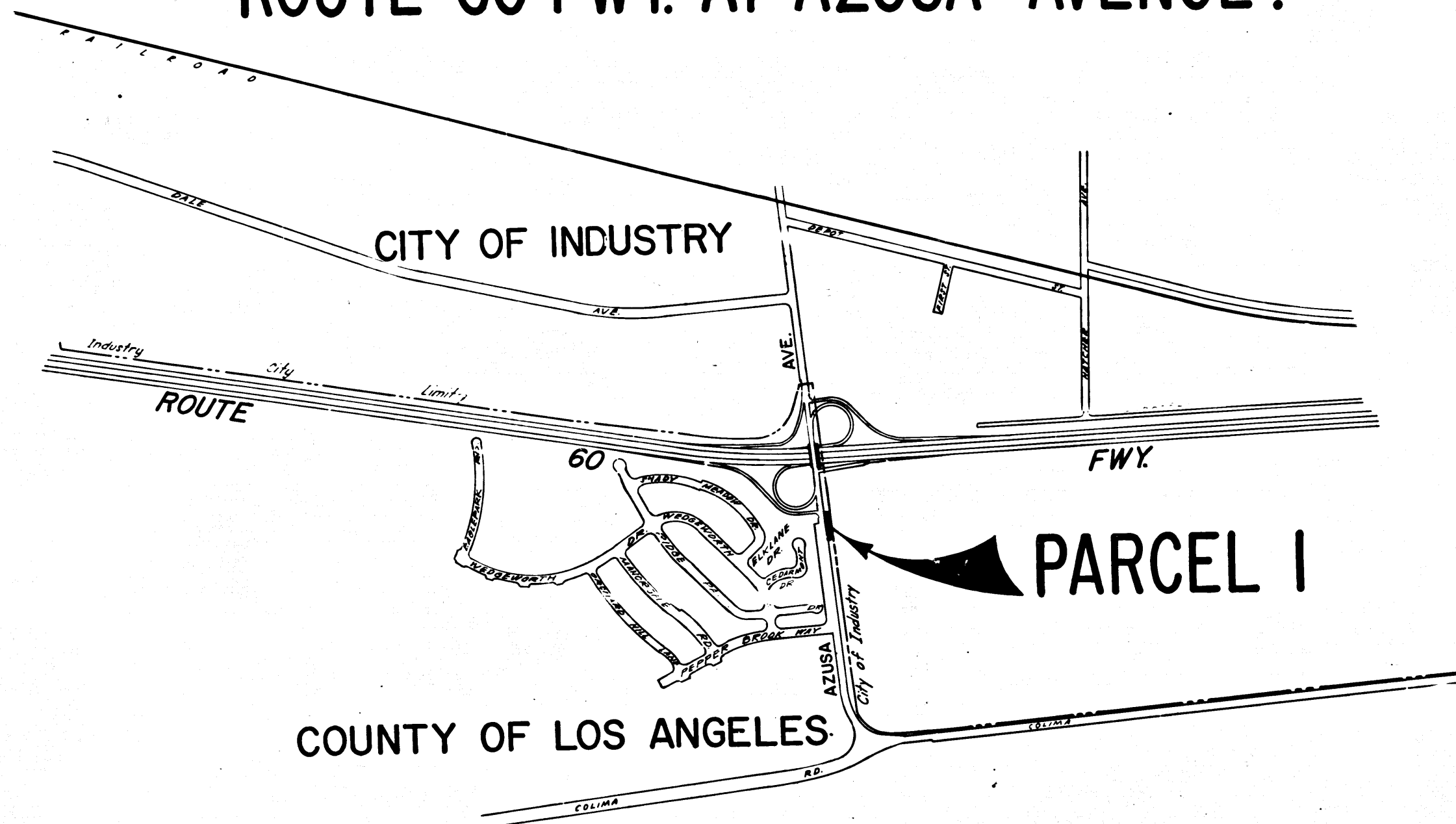


STATE OF CALIFORNIA
 BUSINESS AND TRANSPORTATION AGENCY
 DEPARTMENT OF TRANSPORTATION

RIGHT OF WAY MAPS OF
 STATE HIGHWAY
 IN THE COUNTY OF LOS ANGELES ALONG
 ROUTE 60 FWY. AT AZUSA AVENUE.



358
 3878
 FILED
 AT REQUEST OF
 DEPT. OF PUBLIC WORKS
 FEB 13, 1976
 47 MIN. PAST 3 PM
 IN BOOK 13
 AT PAGE 99
 OF STATE HIGHWAY MAPS
 LOS ANGELES COUNTY, CALIF.
 COUNTY RECORDER
 J. H. ...
 Deputy
 FREE

BOOK 13 PAGE 99

DIST	COUNTY	ROUTE	POST MILES	SHEET NO.	TOTAL SHEETS
07	LA	60	180	1	2

W. C. ...
 CHIEF, RIGHT OF WAY ENGINEERING
 AND UTILITIES RELOCATION BRANCH
 REGISTERED CIVIL ENGINEER NO. 9790

11-12-75
 DATE

Recorded in the Office
 of the County Recorder
 LOS ANGELES COUNTY

S.H.M.B. No. Pg.

STATE OF CALIFORNIA
 BUSINESS AND TRANSPORTATION AGENCY
 DEPARTMENT OF TRANSPORTATION

PROPOSED RELINQUISHMENT

0 600 1200 1800 2400

AREA TO BE RELINQUISHED

DR'N BY <i>U. Kuehn</i>	R/W MAP NO. <i>F1790</i>
C'LC BY <i>J. Cotton</i>	CONTRACT NO. <i>301024</i>
C'K'D BY <i>J. Morris</i>	REL-970
REVISED	

OK 13 04 90

36

COUNTY ENGINEER'S COPY

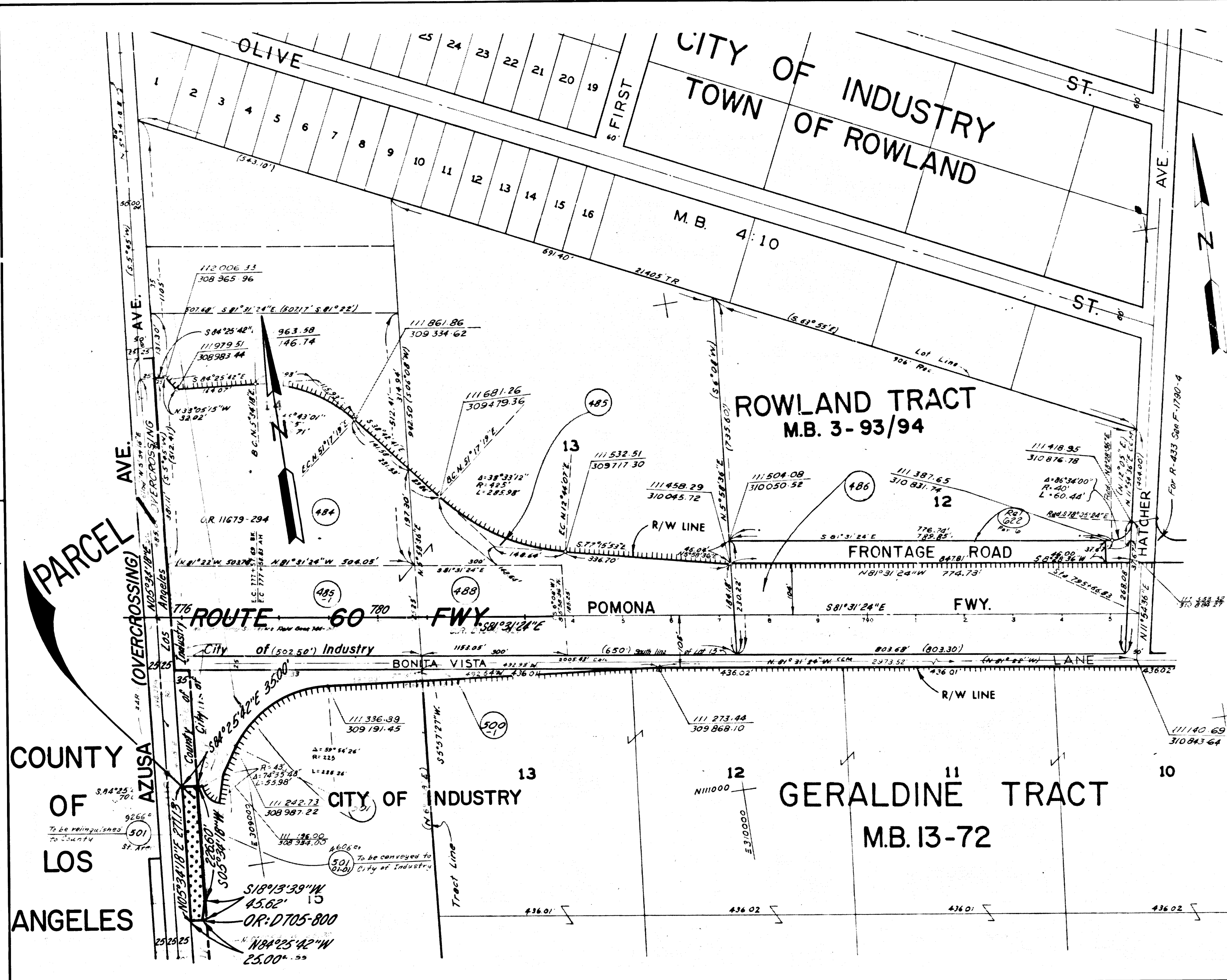
DIST	COUNTY	ROUTE	POST MILES	SHEET NO.	TOTAL SHEETS
07	LA	60	18.0	2	2

FILED WITH LOS ANGELES COUNTY RECORDER
FEB 10 1976

R.W. Fitch
SENIOR ENGINEER,
RIGHT OF WAY ENGINEERING
REGISTERED CIVIL ENGINEER NO. 6079

11-12-75
DATE

Recorded in the Office
of the County Recorder
LOS ANGELES COUNTY
S.H.M.B. No. Pg.



STATE OF CALIFORNIA
BUSINESS AND TRANSPORTATION AGENCY
DEPARTMENT OF TRANSPORTATION

PROPOSED RELINQUISHMENT

0 100 200 300 400

AREA TO BE RELINQUISHED ACCESS PROHIBITED

DR'N BY <i>L. Kuehn</i>	R/W MAP NO. <i>F1790-3</i>
C'LC BY <i>J. Cotton</i>	CONTRACT NO. <i>301024</i>
C'K'D BY <i>J. Morris</i>	REL-970
REVISED	

RK 12 100