

7/18/14 0742

BOOK 14 PAGE 42

STATE OF CALIFORNIA
 BUSINESS AND TRANSPORTATION AGENCY
 DEPARTMENT OF TRANSPORTATION

3882

DIST	COUNTY	ROUTE	POST MILES	SHEET NO.	TOTAL SHEETS
07	LA	210	143.156	1	8

FILED
 AT REQUEST OF
 DEPT. OF PUBLIC WORKS
 FEB 6 1976
 11 MIN. PAST 2 PM
 IN BOOK 14
 PAGE 42
 OF STATE HIGHWAY MAPS
 LOS ANGELES COUNTY, CALIF.
 COUNTY RECORDER
 John Davis
 Deputy
 FREE

W. C. Davis
 CHIEF, RIGHT OF WAY ENGINEERING
 AND UTILITIES RELOCATION BRANCH
 REGISTERED CIVIL ENGINEER NO. 9790

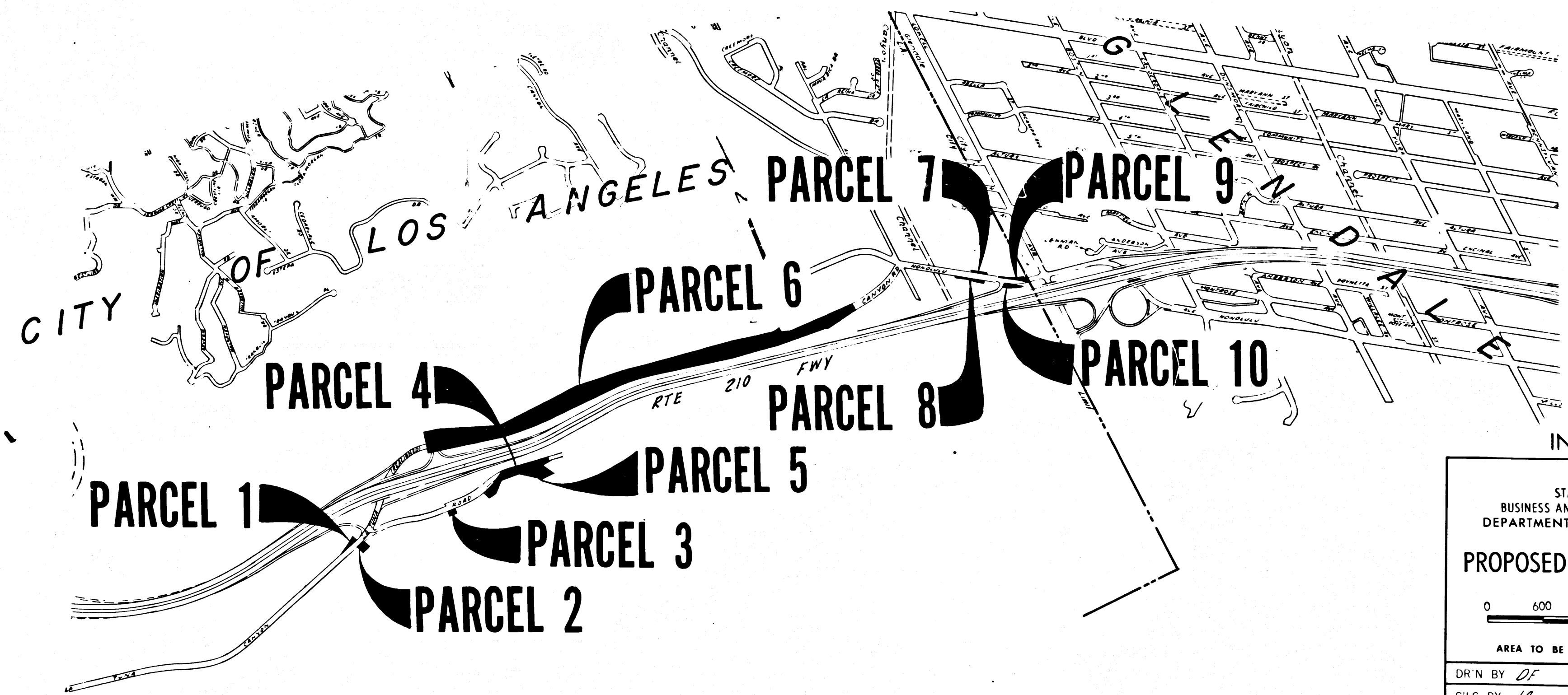
RIGHT OF WAY MAPS OF
 STATE HIGHWAY

In the City of Los Angeles along Rte 210 Fwy. 3.0 miles East of
 Sunland Blvd. to Los Angeles - Glendale City Limit Line

DATE

Recorded in the Office
 of the County Recorder
 LOS ANGELES COUNTY

S.H.M.B. No. Pg.



STATE OF CALIFORNIA
 BUSINESS AND TRANSPORTATION AGENCY
 DEPARTMENT OF TRANSPORTATION

PROPOSED RELINQUISHMENT

0 600 1200 1800 2400

AREA TO BE RELINQUISHED

DR'N BY <i>DF</i>	R/W MAP NO. <i>F-1205</i>
C'LC BY <i>JC</i>	CONTRACT NO. <i>07-063143</i>
C'K'D BY <i>AM</i>	REL- 951
REVISED	

30

COUNTY ENGINEER'S COPY

DIST.	COUNTY	ROUTE	POST MILES	SHEET NO.	TOTAL SHEETS
07	LA	210	143	2	8

FILED WITH LOS ANGELES COUNTY RECORDER
FEB 6 1975

R.W. Feltner
SENIOR TRANSPORTATION ENGINEER
RIGHT OF WAY ENGINEERING
REGISTERED CIVIL ENGINEER NO. 4079

11-6-75
DATE

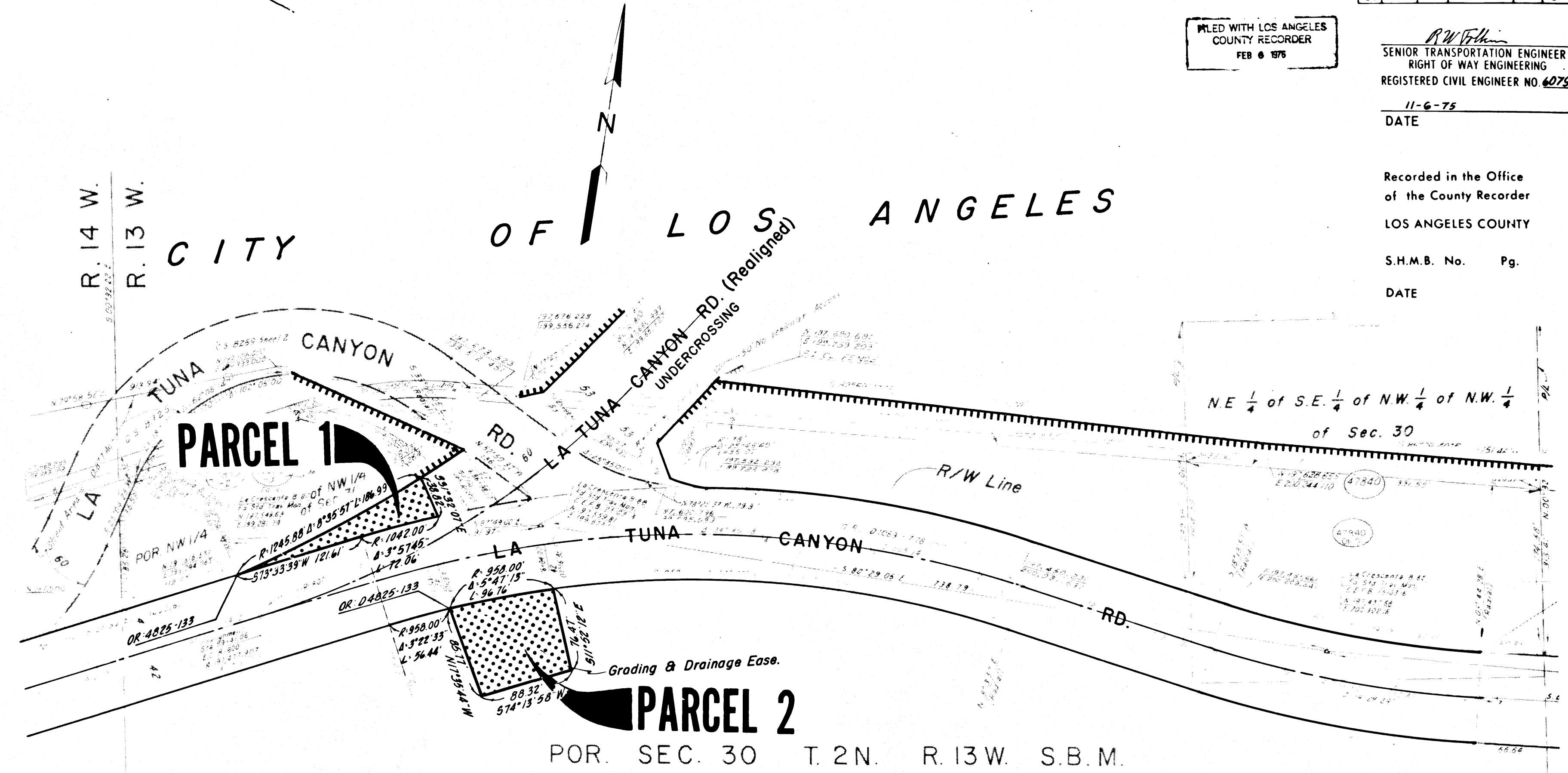
Recorded in the Office of the County Recorder
LOS ANGELES COUNTY

S.H.M.B. No. Pg.
DATE

R. 14 W.
R. 13 W.

CITY

OF LOS ANGELES



NE 1/4 of SE 1/4 of NW 1/4 of NW 1/4 of Sec. 30

INTERSTATE

STATE OF CALIFORNIA
BUSINESS AND TRANSPORTATION AGENCY
DEPARTMENT OF TRANSPORTATION

PROPOSED RELINQUISHMENT



AREA TO BE RELINQUISHED
ACCESS PROHIBITED

DR'N BY <i>DF</i>	R/W MAP NO. <i>F-1205-3</i>
C'LC BY <i>JC</i>	CONTRACT NO. <i>063744</i>
C'K'D BY <i>AM</i>	REL-951
REVISED	

COUNTY ENGINEER'S COPY

DIST.	COUNTY	ROUTE	POST MILES	SHEET NO.	TOTAL SHEETS
07	L.A.	210	14.4	3	8

FILED WITH LOS ANGELES COUNTY RECORDER
FEB 6 1976

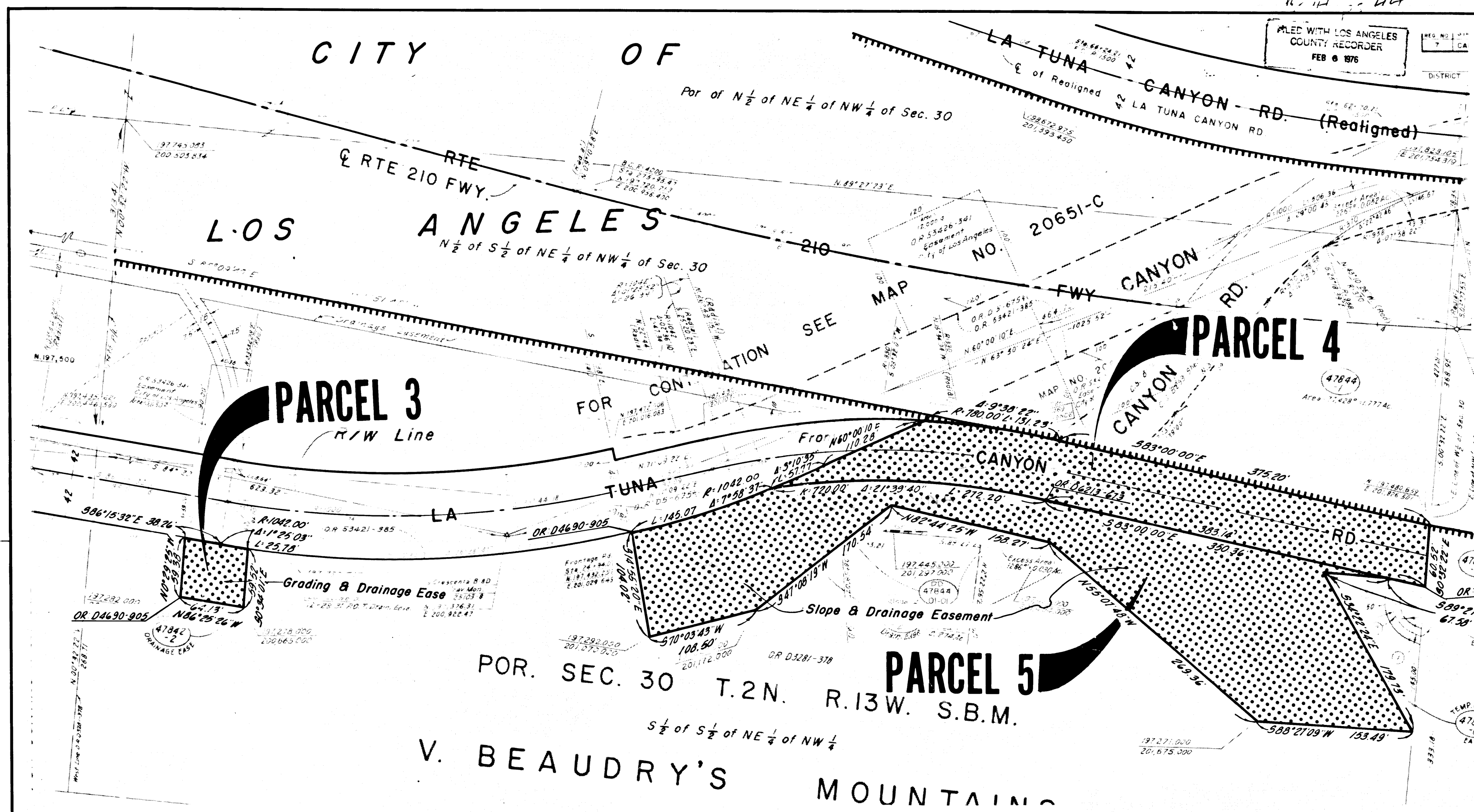
R.W. Feltner
SENIOR TRANSPORTATION ENGINEER
RIGHT OF WAY ENGINEERING
REGISTERED CIVIL ENGINEER NO. 6072

DATE

Recorded in the Office of the County Recorder
LOS ANGELES COUNTY

S.H.M.B. No. Pg.

DATE



INTERSTATE

STATE OF CALIFORNIA
BUSINESS AND TRANSPORTATION AGENCY
DEPARTMENT OF TRANSPORTATION

PROPOSED RELINQUISHMENT

0 50 100 150 200

AREA TO BE RELINQUISHED XXXX
ACCESS PROHIBITED XXXX

DR'N BY <i>DF</i>	R/W MAP NO. <i>F-1205-5</i>
C'LC BY <i>JC</i>	CONTRACT NO. <i>063744</i>
C'K'D BY <i>AM</i>	REL- 951
REVISED	

CITY OF LOS ANGELES

POR. SEC. 30 T.2N. R.13W. S.B.M.

SUR. MAP NO. B725

PARCEL 6

FILED WITH LOS ANGELES COUNTY RECORDER
FEB 6 1976

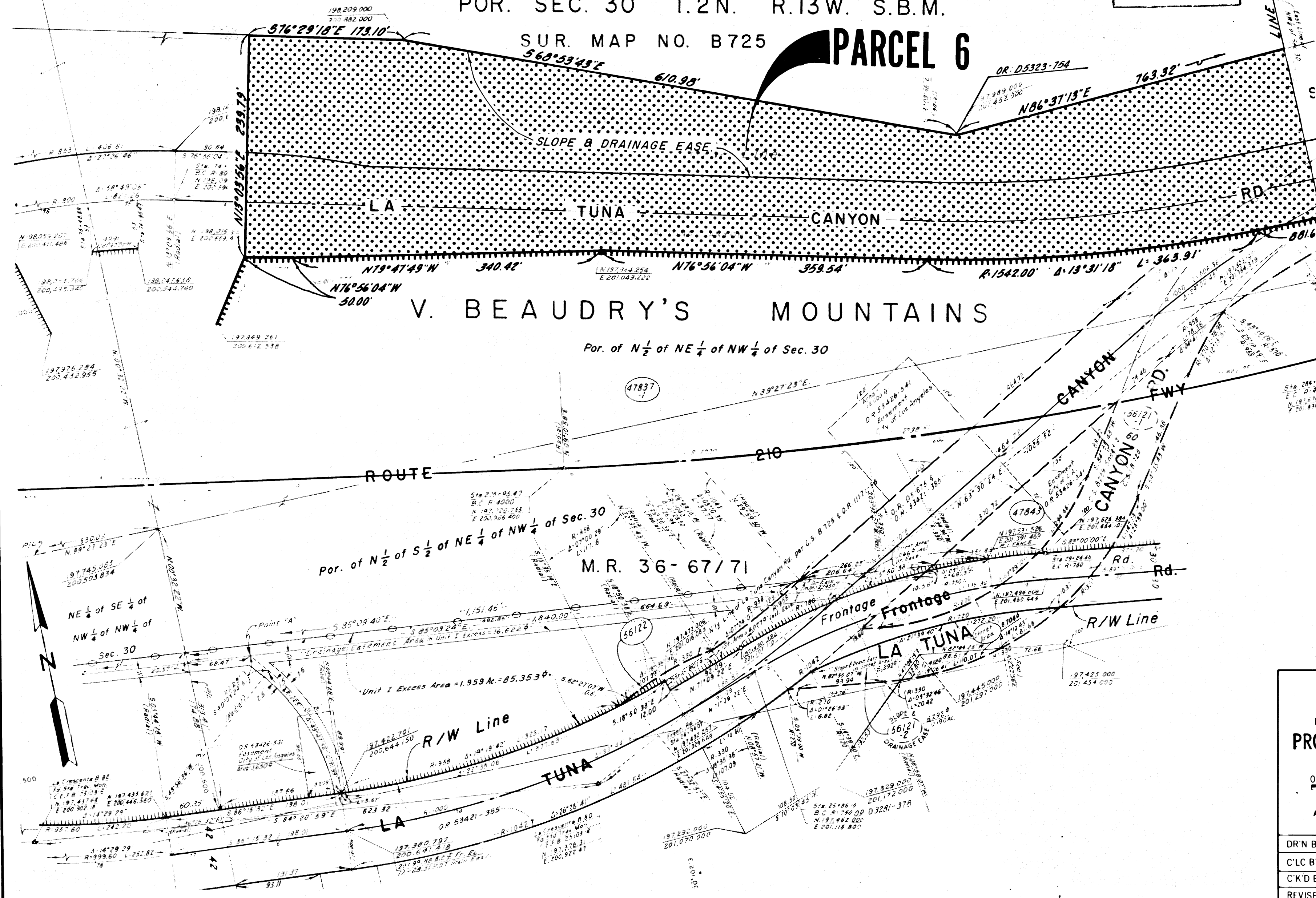
COUNTY	ROUTE	POST MILES	SHEET NO.	TOTAL SHEETS
07 LA	210	14.4	4	8

R.W. Felt
SENIOR TRANSPORTATION ENGINEER
RIGHT OF WAY ENGINEERING
REGISTERED CIVIL ENGINEER NO. 6079

11-6-75
DATE

Recorded in the Office
of the County Recorder
LOS ANGELES COUNTY

S.H.M.B. No. Pg.
DATE



Por. of N 1/2 of NE 1/4 of NW 1/4 of Sec. 30

Por. of N 1/2 of S 1/2 of NE 1/4 of NW 1/4 of Sec. 30
M.R. 36-67/71

INTERSTATE

STATE OF CALIFORNIA
BUSINESS AND TRANSPORTATION AGENCY
DEPARTMENT OF TRANSPORTATION

PROPOSED RELINQUISHMENT

0 50 100 150 200

AREA TO BE RELINQUISHED ACCESS PROHIBITED

DR'N BY <i>DF</i>	R/W MAP NO. <i>F-1205-A</i>
C'LC BY <i>JG</i>	CONTRACT NO. <i>063744</i>
C'K'D BY <i>AM</i>	REL-951
REVISED	

COUNTY ENGINEER'S COPY

DIST	COUNTY	ROUTE	POST MILES	SHEET NO.	TOTAL SHEETS
07	LA	210	14.7	5	8

FILED WITH LOS ANGELES COUNTY RECORDER
FEB 6 1976

B.W. Fellins
SENIOR TRANSPORTATION ENGINEER
RIGHT OF WAY ENGINEERING
REGISTERED CIVIL ENGINEER NO. 6072

11-6-75
DATE

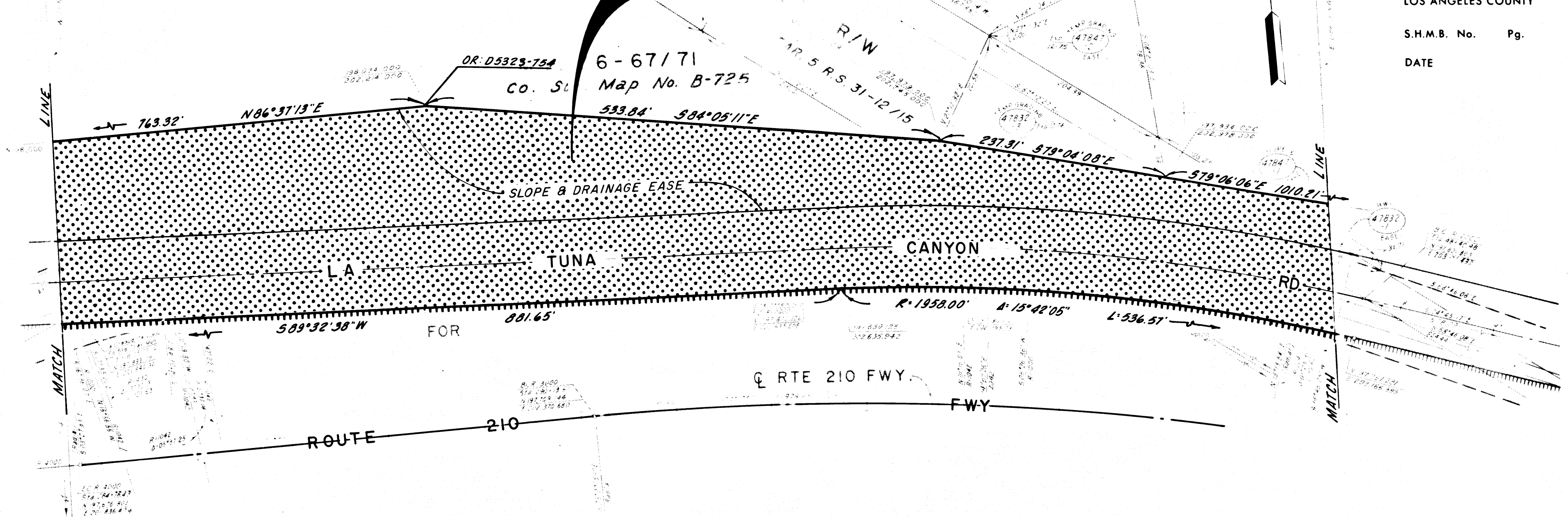
Recorded in the Office of the County Recorder
LOS ANGELES COUNTY

S.H.M.B. No. Pg.
DATE

POR. SEC. 30 CITY OF LOS ANGELES MOUNTAINS
SO. CALIF. EDISON T.2N R.13W. S.B.M.

V. BEAUDRY'S

PARCEL 6



INTERSTATE

STATE OF CALIFORNIA
BUSINESS AND TRANSPORTATION AGENCY
DEPARTMENT OF TRANSPORTATION

PROPOSED RELINQUISHMENT

0 50 100 150 200

AREA TO BE RELINQUISHED
ACCESS PROHIBITED

DR'N BY <i>DF</i>	R/W MAP NO. <i>F-1205-6</i>
C/LC BY <i>JC</i>	CONTRACT NO. <i>063744</i>
C/K'D BY <i>AM</i>	REL-951
REVISED	

DIST	COUNTY	ROUTE	POST MILES	SHEET NO	TOTAL SHEETS
07	LA	210	15.0	6	8

FILED WITH LOS ANGELES COUNTY RECORDER
FEB 6 1975

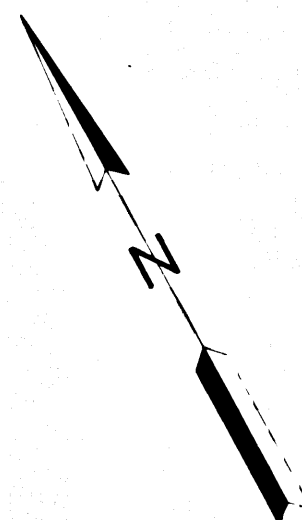
R.W. Williams
SENIOR TRANSPORTATION ENGINEER
RIGHT OF WAY ENGINEERING
REGISTERED CIVIL ENGINEER NO 6079

DATE
11-6-75

Recorded in the Office
of the County Recorder
LOS ANGELES COUNTY

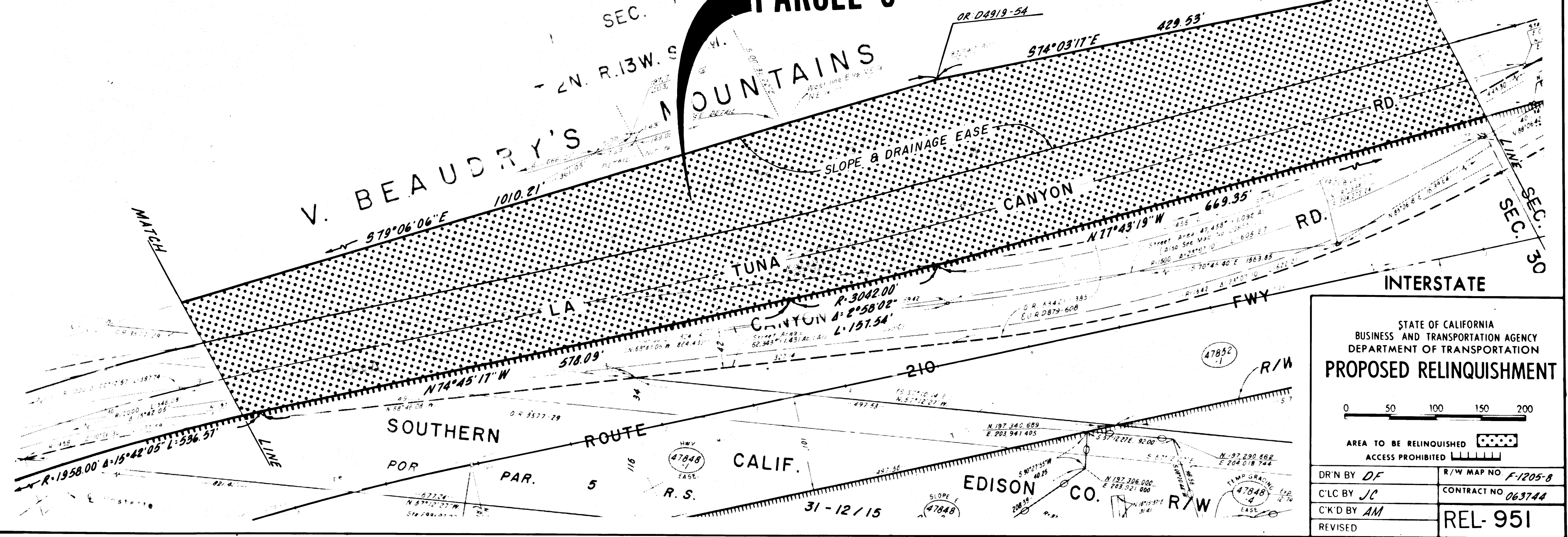
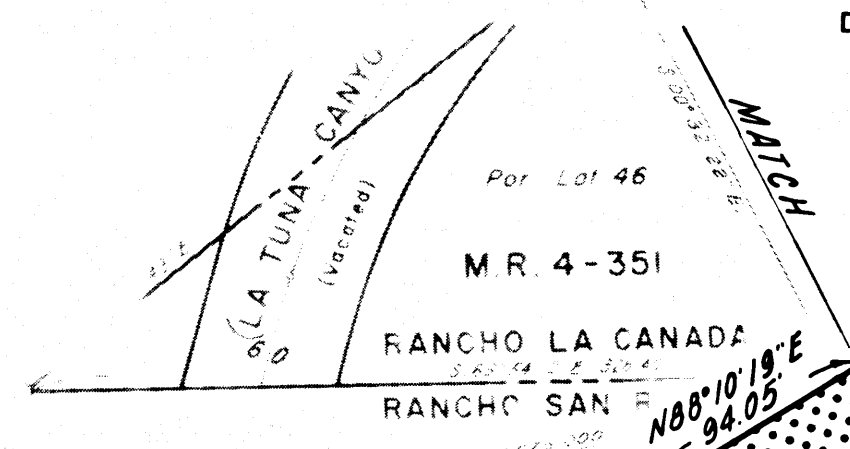
S.H.M.B. No. Pg.
DATE

CITY OF LOS ANGELES



PARCEL 6

V. BEAUDRY'S MOUNTAINS



STATE OF CALIFORNIA
BUSINESS AND TRANSPORTATION AGENCY
DEPARTMENT OF TRANSPORTATION

PROPOSED RELINQUISHMENT

0 50 100 150 200

AREA TO BE RELINQUISHED ACCESS PROHIBITED

DR'N BY <i>DF</i>	R/W MAP NO <i>F-1205-B</i>
C'LC BY <i>JC</i>	CONTRACT NO <i>063744</i>
C'K'D BY <i>AM</i>	REL-951
REVISED	

COUNTY ENGINEER'S COPY

DIST	COUNTY	ROUTE	POST MILES	SHEET NO.	TOTAL SHEETS
07	LA	210	15.3	7	8

FILED WITH LOS ANGELES COUNTY RECORDER
FEB 6 1976

R.W. Perkins
SENIOR TRANSPORTATION ENGINEER
RIGHT OF WAY ENGINEERING
REGISTERED CIVIL ENGINEER NO. 60729

11-6-75
DATE

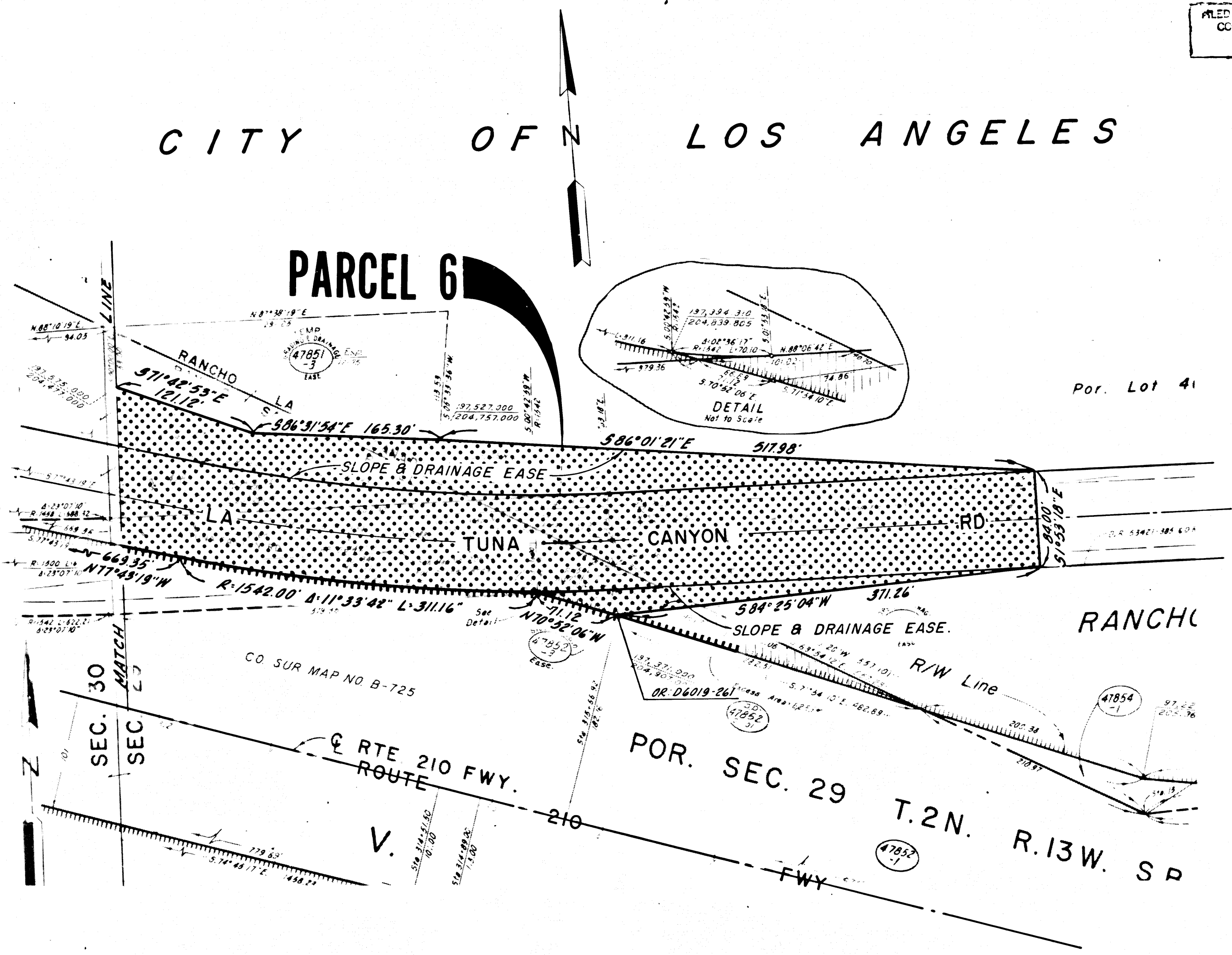
Recorded in the Office
of the County Recorder

LOS ANGELES COUNTY

S.H.M.B. No. Pg.

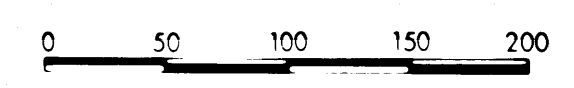
DATE

CITY OF N LOS ANGELES



INTERSTATE

STATE OF CALIFORNIA
BUSINESS AND TRANSPORTATION AGENCY
DEPARTMENT OF TRANSPORTATION
PROPOSED RELINQUISHMENT



AREA TO BE RELINQUISHED

ACCESS PROHIBITED

DR'N BY <i>DF</i>	R/W MAP NO. <i>F-1205-9</i>
C'LC BY <i>JC</i>	CONTRACT NO. <i>063744</i>
C'K'D BY <i>AM</i>	REL-951
REVISED	

COUNTY ENGINEER'S COPY

DIST	COUNTY	ROUTE	POST MILES	SHEET NO	TOTAL SHEETS
07	LA	210	15.6	8	8

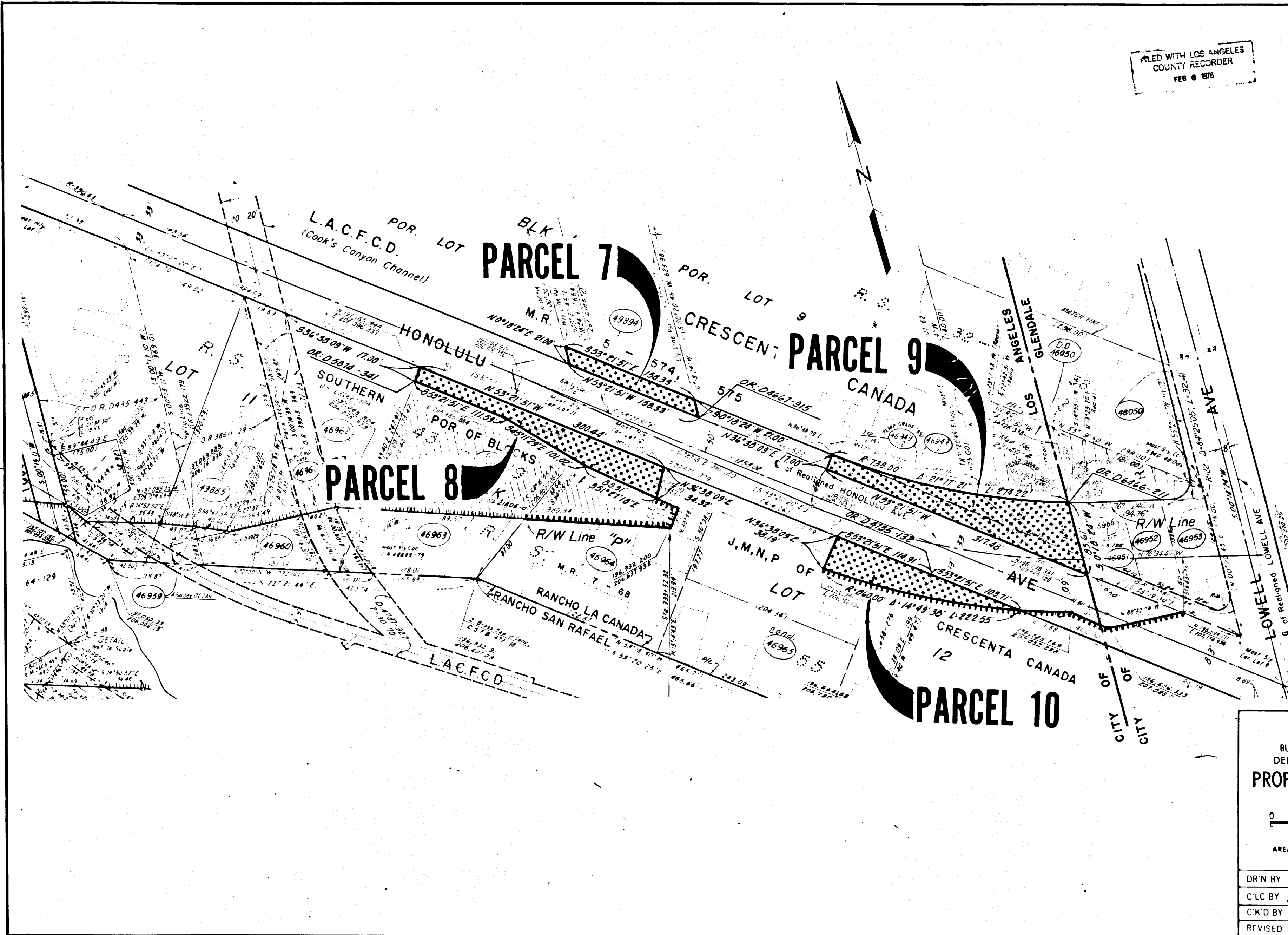
FILED WITH LOS ANGELES COUNTY RECORDER
FEB 6 1976

R.W. Williams
SENIOR TRANSPORTATION ENGINEER
RIGHT OF WAY ENGINEERING,
REGISTERED CIVIL ENGINEER NO. 6079

11-6-75
DATE



Recorded in the Office
of the County Recorder
LOS ANGELES COUNTY

S.H.M.B. No. Pg.
DATE



STATE OF CALIFORNIA
BUSINESS AND TRANSPORTATION AGENCY
DEPARTMENT OF TRANSPORTATION
PROPOSED RELINQUISHMENT

0 50 100 150 200

AREA TO BE RELINQUISHED 
ACCESS PROHIBITED 

DR'N BY <i>DF</i>	R/W MAP NO <i>F-1205-10</i>
C'LC BY <i>JC</i>	CONTRACT NO <i>063744</i>
C'K'D BY <i>AM</i>	REL-951
REVISED	