

STATE OF CALIFORNIA
 BUSINESS AND TRANSPORTATION AGENCY
 DEPARTMENT OF TRANSPORTATION

RIGHT OF WAY MAPS OF
 STATE HIGHWAY
 In the City of Los Angeles on Sepulveda Blvd.
 between 0.1mi. North of Rte 405 Fwy and 0.2mi. South of Route 90 Fwy.

DIST	COUNTY	ROUTE	POST MILES	SHEET NO.	TOTAL SHEETS
07	LA	405	25.8	1	2

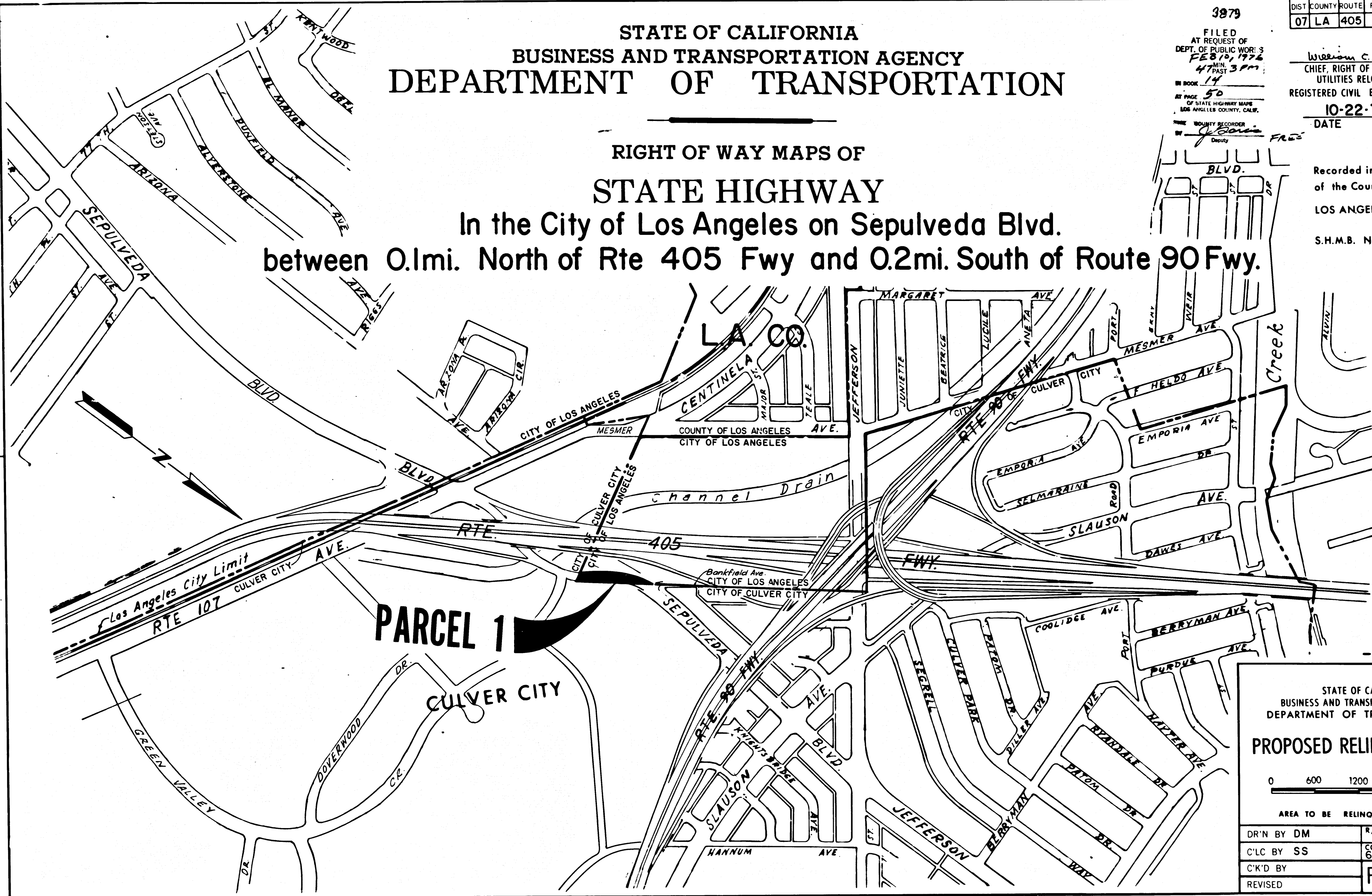
3879
 FILED
 AT REQUEST OF
 DEPT. OF PUBLIC WORKS
 FEB 19, 1975
 4:17 PM
 IN BOOK 14
 AT PAGE 50
 OF STATE HIGHWAY MAPS
 LOS ANGELES COUNTY, CALIF.
 COUNTY RECORDER
 J. G. ...

William C. ...
 CHIEF, RIGHT OF WAY ENGINEER AND
 UTILITIES RELOCATION BRANCH
 REGISTERED CIVIL ENGINEER NO. 9790

10-22-75
 DATE

Recorded in the Office
 of the County Recorder
 LOS ANGELES COUNTY

S.H.M.B. No. Pg.



-INTERSTATE-

STATE OF CALIFORNIA
 BUSINESS AND TRANSPORTATION AGENCY
 DEPARTMENT OF TRANSPORTATION

PROPOSED RELINQUISHMENT

0 600 1200 1800 2400

AREA TO BE RELINQUISHED

DR'N BY DM	R/W MAP NO. F1927-11, 13
C'LC BY SS	CONTRACT NO. 62-7V13C44
C'K'D BY	REL-979
REVISED	

47-37

13

DIST.	COUNTY	ROUTE	POST MILES	SHEET NO.	TOTAL SHEETS
07	LA	405	25.8	2	2

FILED WITH LOS ANGELES COUNTY RECORDER
FEB 10 1976

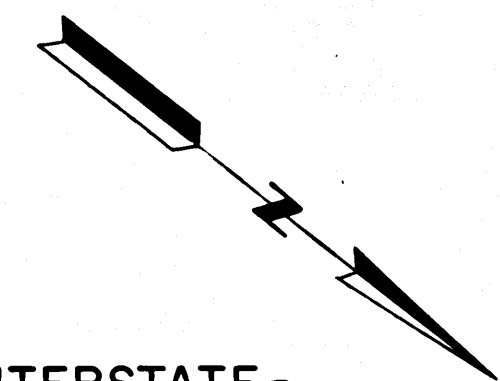
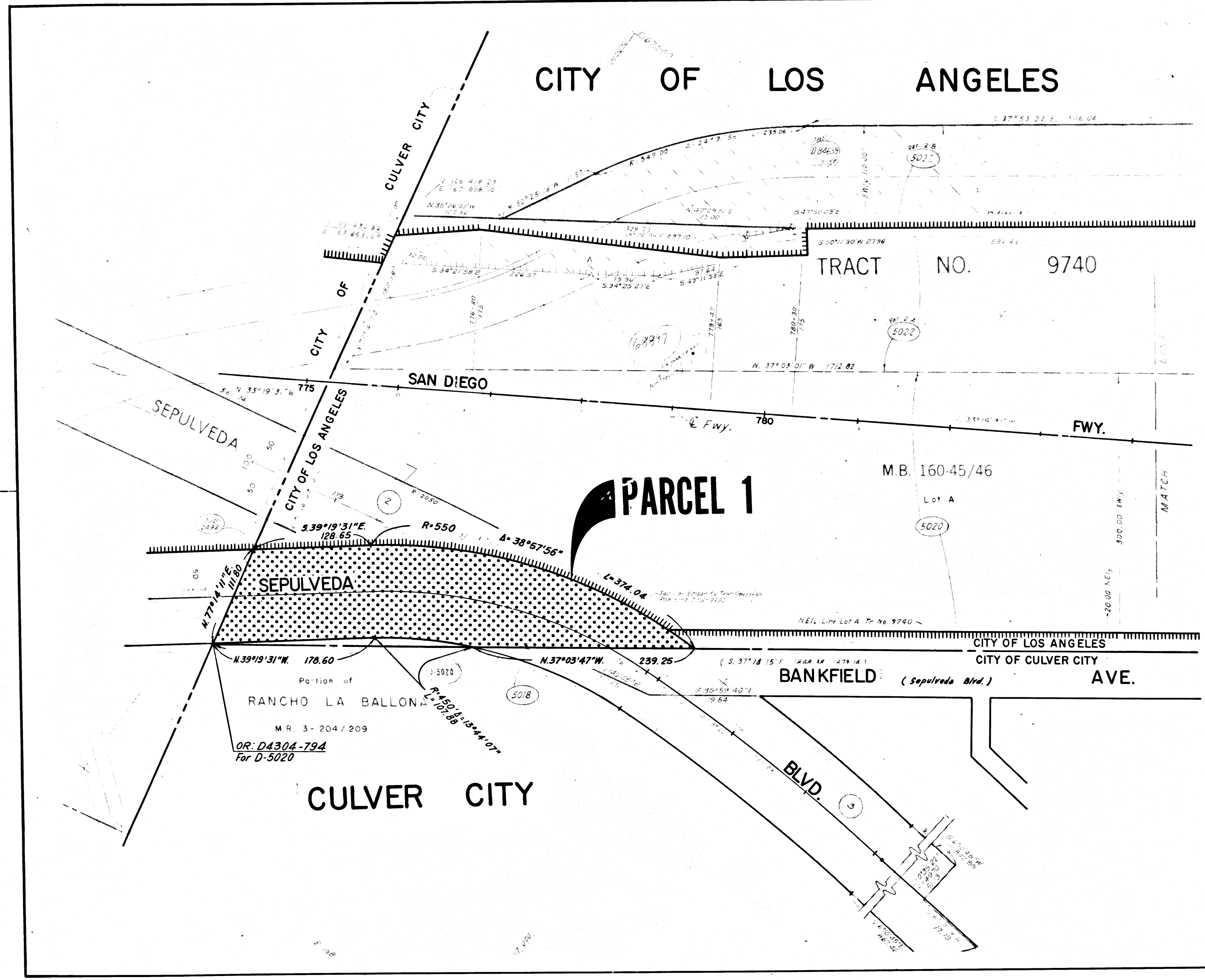
R.W. Folmer
SENIOR TRANSPORTATION ENGINEER
RIGHT OF WAY ENGINEERING
REGISTERED CIVIL ENGINEER NO. 6079
10-22-75

DATE

Recorded in the Office
of the County Recorder
LOS ANGELES COUNTY

S.H.M.B. No. Pg.

DATE



- INTERSTATE -

STATE OF CALIFORNIA
BUSINESS AND TRANSPORTATION AGENCY
DEPARTMENT OF TRANSPORTATION

PROPOSED RELINQUISHMENT

0 50 100 150 200

AREA TO BE RELINQUISHED ACCESS PROHIBITED

DR'N BY DM	R/W MAP NO. F1927-11
C'LC BY SS	CONTRACT NO. 62-7V13C44
C'K'D BY	REL-979
REVISED	

COUNTY ENGINEER'S COPY