

CITY OF GLENDALE

FILED WITH LOS ANGELES COUNTY RECORDER
JUL 26 1976

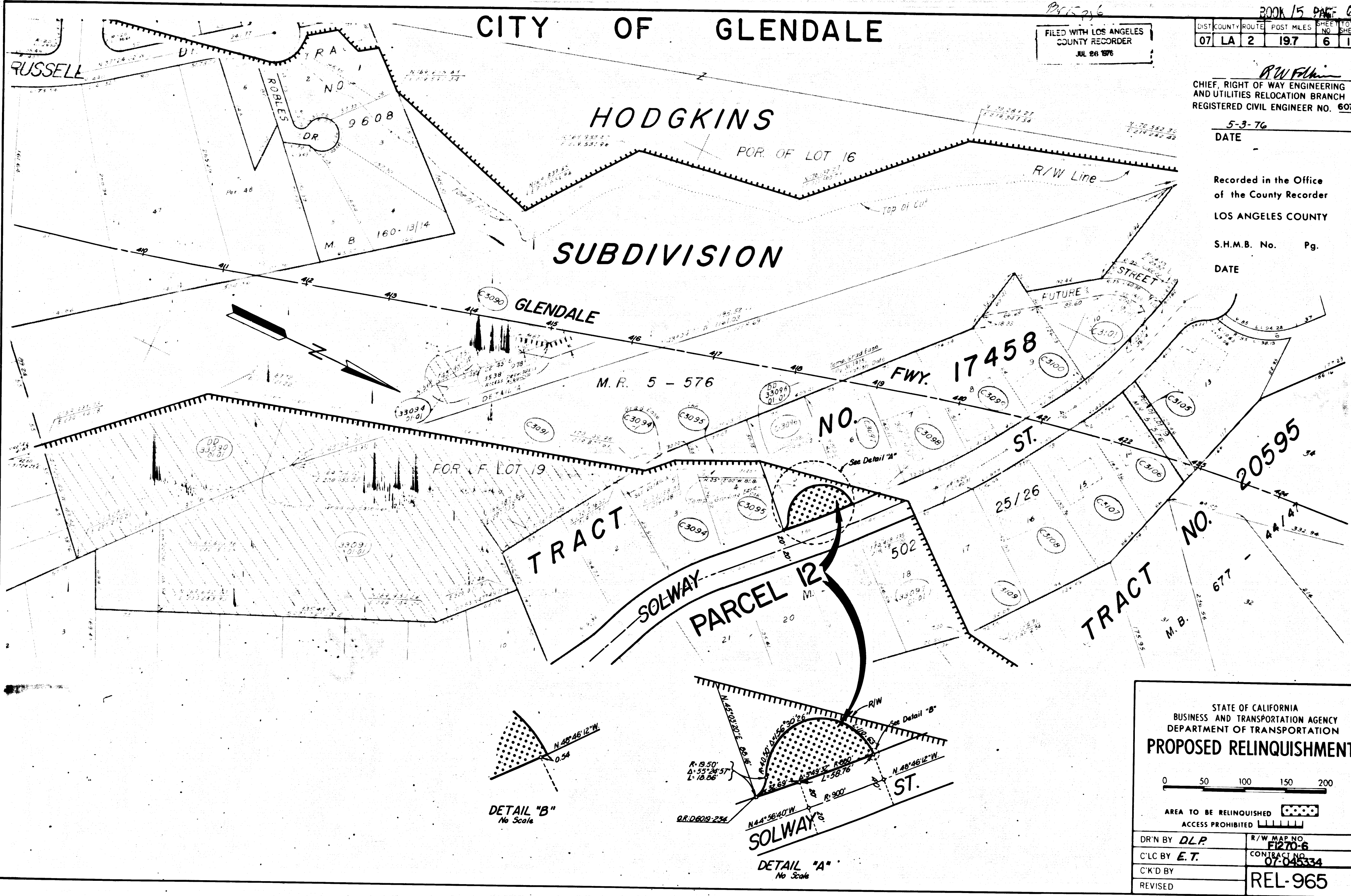
BOOK 15 PAGE 6					
DIST	COUNTY	ROUTE	POST MILES	SHEET NO.	TOTAL SHEETS
07	LA	2	197	6	11

R.W. Felkin
CHIEF, RIGHT OF WAY ENGINEERING
AND UTILITIES RELOCATION BRANCH
REGISTERED CIVIL ENGINEER NO. 6079

5-3-76
DATE

Recorded in the Office
of the County Recorder
LOS ANGELES COUNTY

S.H.M.B. No. Pg.
DATE



STATE OF CALIFORNIA
BUSINESS AND TRANSPORTATION AGENCY
DEPARTMENT OF TRANSPORTATION
PROPOSED RELINQUISHMENT

0 50 100 150 200

AREA TO BE RELINQUISHED XXXX
ACCESS PROHIBITED XXXXXX

DR'N BY <i>D.L.P.</i>	R/W MAP NO. F1270-6
C'LC BY <i>E.T.</i>	CONTRACT NO. 07-045334
C'K'D BY	REL-965
REVISED	

COUNTY ENGINEER'S COPY

10-15-25-7

DIST	COUNTY	ROUTE	POST MILES	SHEET NO.	TOTAL SHEETS
07	LA	2	19.8	7	11

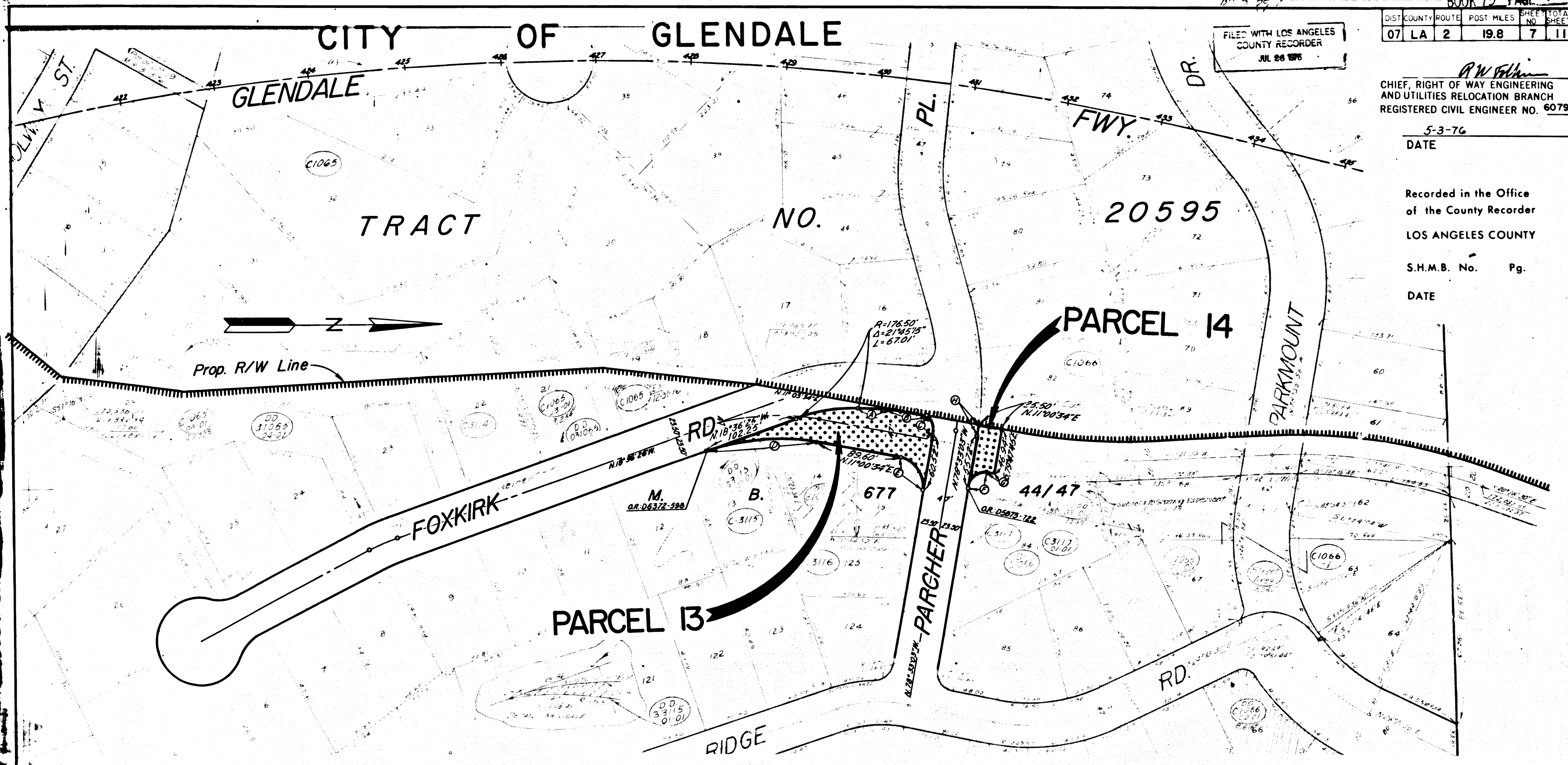
FILED WITH LOS ANGELES COUNTY RECORDER
JUL 26 1976

R. W. Walker
CHIEF, RIGHT OF WAY ENGINEERING
AND UTILITIES RELOCATION BRANCH
REGISTERED CIVIL ENGINEER NO. 6079

5-3-76
DATE

Recorded in the Office
of the County Recorder
LOS ANGELES COUNTY

S.H.M.B. No. Pg.
DATE



- ⊙ 51.47' N.3°06'49"E.
- ⊙ 40.42' N.11°00'34"E.
- ⊙ R-19.50' Δ-54°03'39" L-18.40'
- ⊙ R-226.50' Δ-29°37'00" L-117.08'
- ⊙ R-29.50' Δ-90°26'25" L-46.96'
- ⊙ R-19.50' Δ-89°25'30" L-30.44'
- ⊙ R-600' Δ-0°40'20" L-7.04'
- ⊙ R-325.50' Δ-1°52'55" L-10.63'

STATE OF CALIFORNIA
BUSINESS AND TRANSPORTATION AGENCY
DEPARTMENT OF TRANSPORTATION
PROPOSED RELINQUISHMENT

0 50 100 150 200

AREA TO BE RELINQUISHED

ACCESS PROHIBITED

DR'N BY	DLP	R/W MAP NO.	E1270-7
C'LC BY	ET	CONTRACT NO.	07-045334
C'K'D BY		REL-965	
REVISED			

COUNTY ENGINEER'S COPY

CITY OF GLENDALE

BOOK 15 PAGE 8
 FILED WITH LOS ANGELES COUNTY RECORDER
 JUL 28 1976

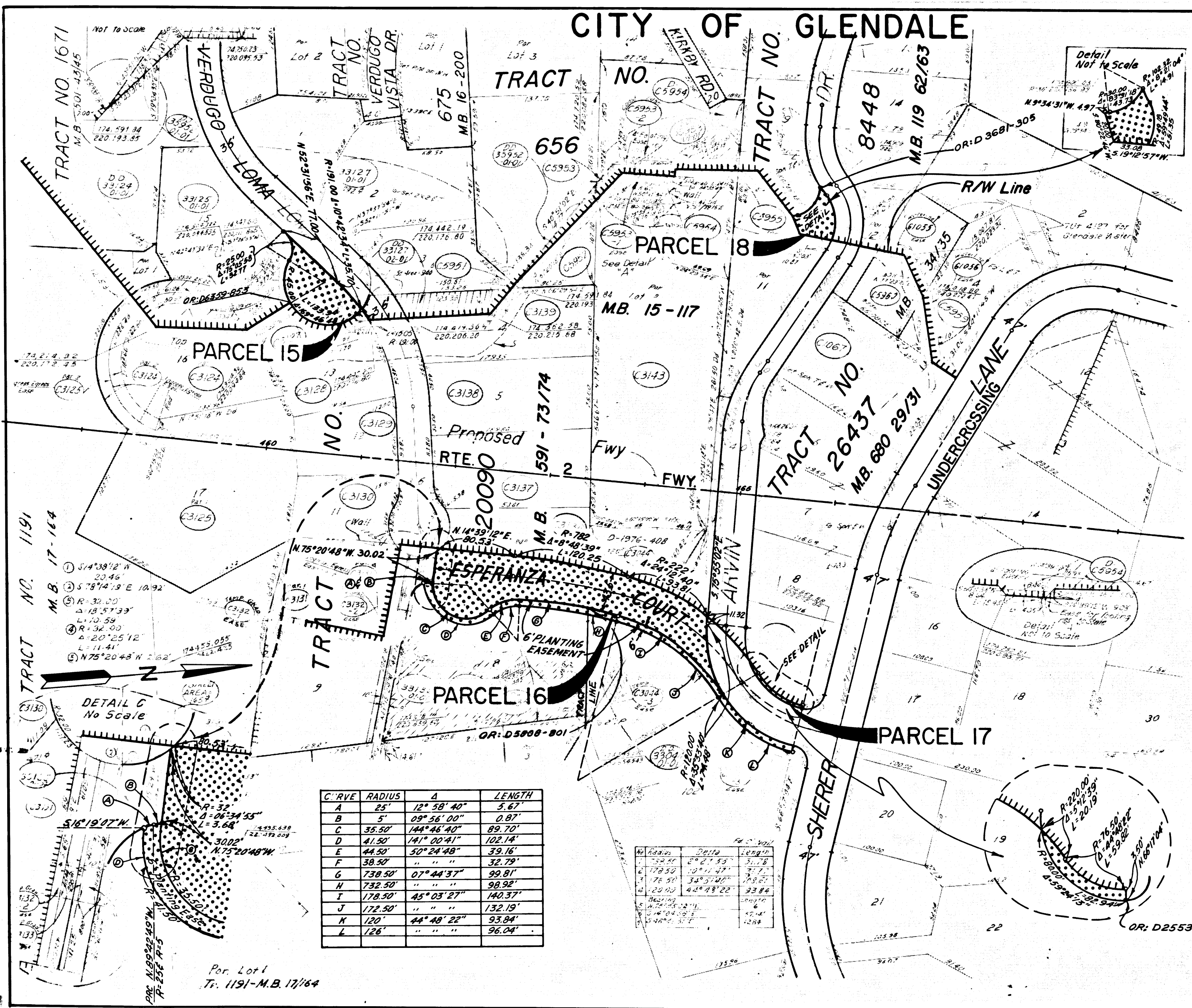
DIST	COUNTY	ROUTE	POST MILES	SHEET NO.	TOTAL SHEETS
07	LA	2	20.6	8	11

R.W. Feltman
 SENIOR TRANSPORTATION ENGINEER
 RIGHT OF WAY ENGINEERING
 REGISTERED CIVIL ENGINEER NO. 6079

5-3-76
 DATE

Recorded in the Office
 of the County Recorder
 LOS ANGELES COUNTY

S.H.M.B. No. Pg.
 DATE



FOR CONTINUATION SEE MAP NO F-1271-4

STATE OF CALIFORNIA
 BUSINESS AND TRANSPORTATION AGENCY
 DEPARTMENT OF TRANSPORTATION

PROPOSED RELINQUISHMENT

0 50 100 150 200

AREA TO BE RELINQUISHED ACCESS PROHIBITED

DR'N BY DM	R/W MAP NO F1271-3
C'LC BY ET	CONTRACT NO 07-045334
C'K'D BY	REL-965
REVISED	

COUNTY ENGINEER'S COPY

B.S. 15 p. 9

BOOK 15 PAGE 2

FILED WITH LOS ANGELES COUNTY RECORDER JUL 26 1976

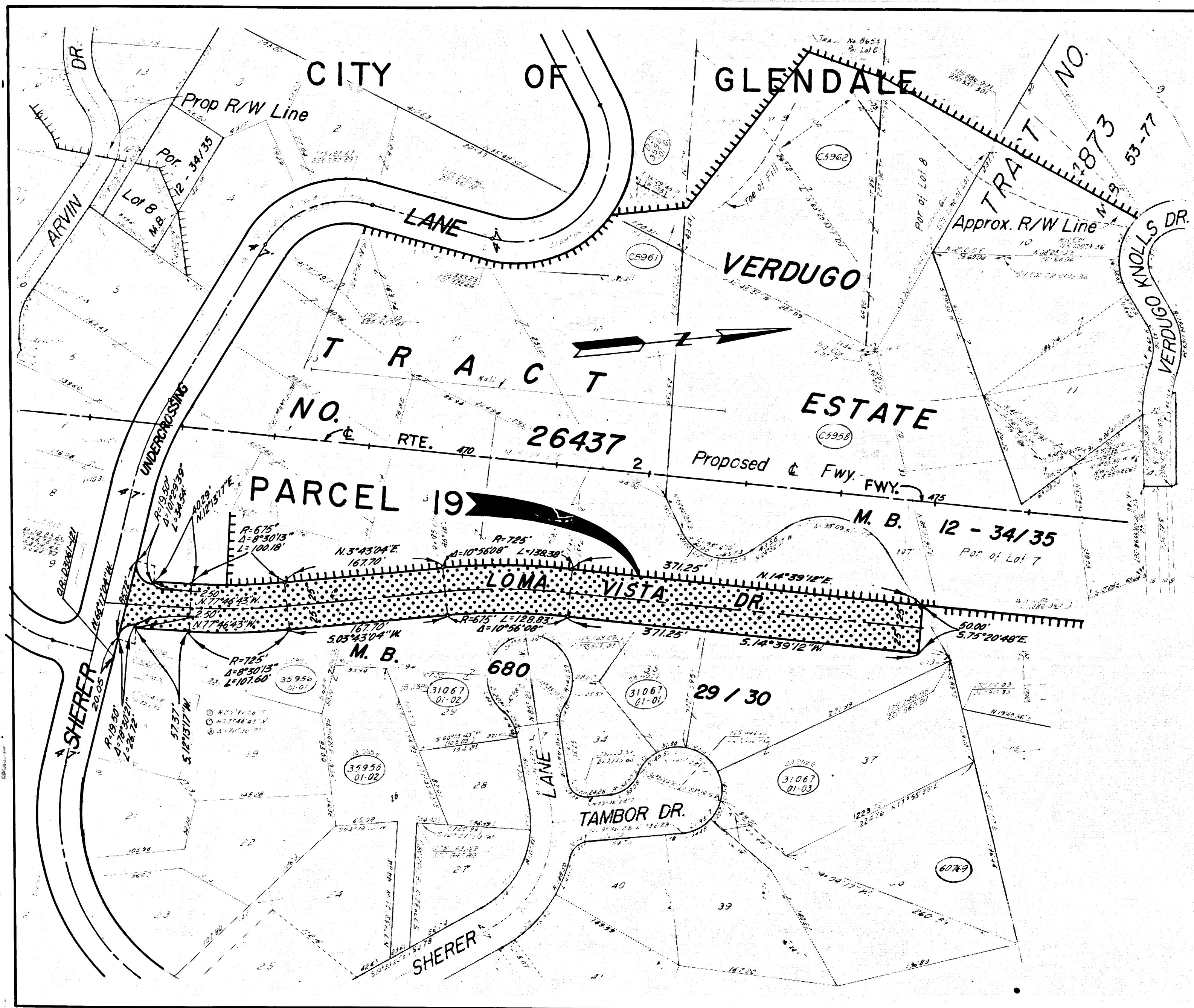
DIST	COUNTY	ROUTE	POST MILES	SHEET NO.	TOTAL SHEETS
07	LA	2	20.7	9	11

R.W. Felton
 SENIOR TRANSPORTATION ENGINEER
 RIGHT OF WAY ENGINEERING
 REGISTERED CIVIL ENGINEER NO. 6079

5-3-76
 DATE

Recorded in the Office
 of the County Recorder
 LOS ANGELES COUNTY

S.H.M.B. No. Pg.
 DATE



STATE OF CALIFORNIA
 BUSINESS AND TRANSPORTATION AGENCY
 DEPARTMENT OF TRANSPORTATION

PROPOSED RELINQUISHMENT

0 50 100 150 200

AREA TO BE RELINQUISHED

ACCESS PROHIBITED

DR'N BY	R.D.	R/W MAP NO.	F1271-4
C'LC BY	E.T.	CONTRACT NO.	07-045334
C'K'D BY			
REVISED			REL-965

COUNTY ENGINEER'S COPY

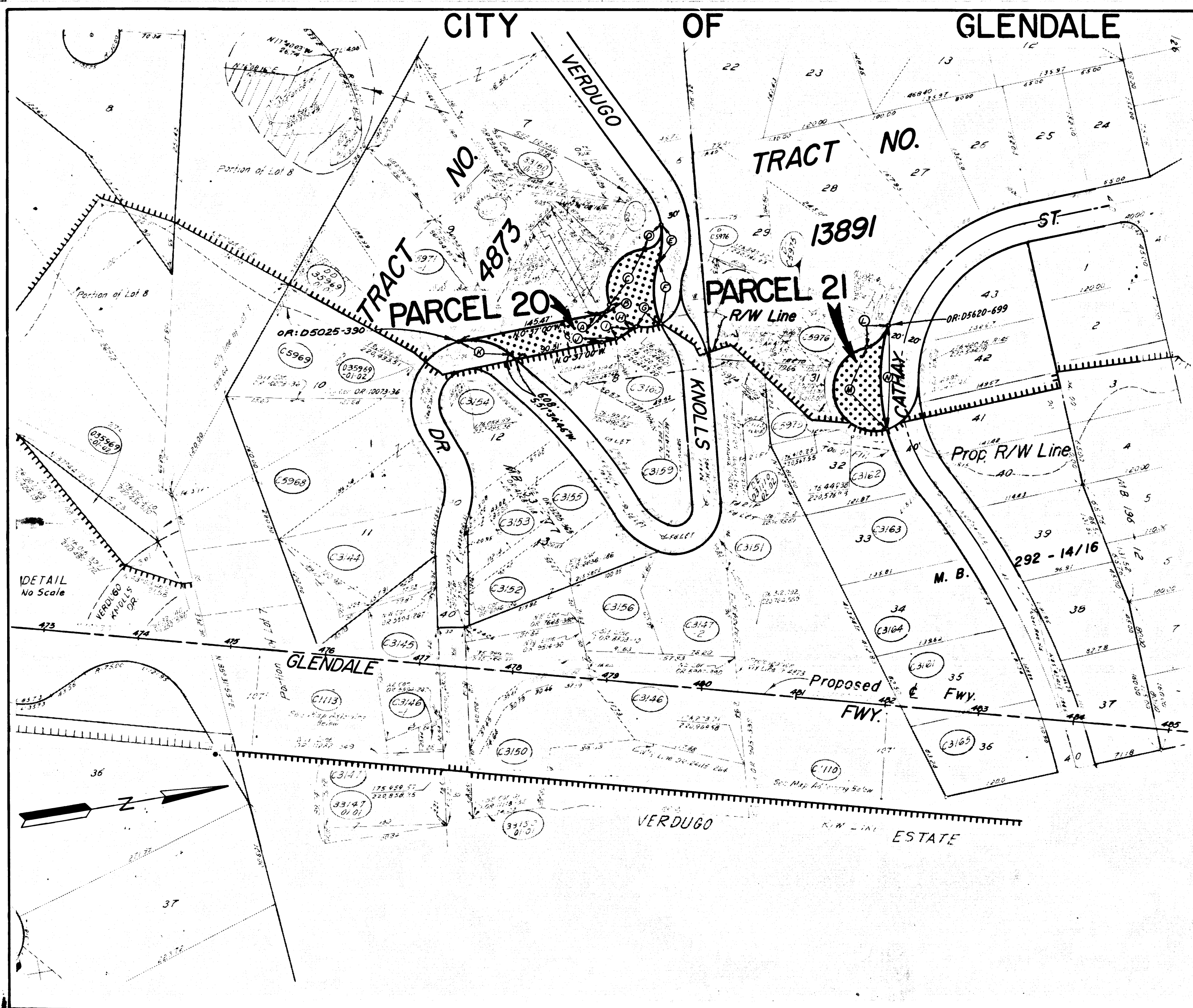
DIST	COUNTY	ROUTE	POST MILES	SHEET NO.	TOTAL SHEETS
07	LA	2	20.8	10	11

B.W. Folkins
 SENIOR TRANSPORTATION ENGINEER
 RIGHT OF WAY ENGINEERING
 REGISTERED CIVIL ENGINEER NO. 6979

5-3-76
 DATE

Recorded in the Office
 of the County Recorder
 LOS ANGELES COUNTY

S.H.M.B. No. Pg.
 DATE



- ① R: 64.20' Δ: 7°57'23" L: 11.69'
- ② R: 5.00' Δ: 95°35'13" L: 8.34'
- ③ R: 40.00' Δ: 112°5'16" L: 78.25'
- ④ R: 20.00' Δ: 90°52'34" L: 31.72'
- ⑤ R: 64.20' Δ: 20°3'22" L: 29.47'
- ⑥ R: 95.06' Δ: 41°16'7" L: 69.05'
- ⑦ R: 40.00' Δ: 40°21'47" L: 28.18'
- ⑧ R: 5.00' Δ: 63°36'48" L: 5.55'
- ⑨ R: 35.00' Δ: 31°58'30" L: 19.53'
- ⑩ R: 14.20' Δ: 7°57'23" L: 15.66'
- ⑪ R: 65.11' Δ: 52°11'48" L: 39.32'
- ⑫ R: 35.00' Δ: 59°9'14" L: 36.14'
- ⑬ R: 45.00' Δ: 104°20'32" L: 144.79'
- ⑭ R: 190.00' Δ: 33°42'50" L: 111.80'

STATE OF CALIFORNIA
 BUSINESS AND TRANSPORTATION AGENCY
 DEPARTMENT OF TRANSPORTATION

PROPOSED RELINQUISHMENT

0 50 100 150 200

AREA TO BE RELINQUISHED [Pattern]

ACCESS PROHIBITED [Pattern]

DR'N BY	D.L.P.	R/W MAP NO.	F1271-5
C'LC BY	E.T.	CONTRACT NO.	07-045334
C'K'D BY			
REVISED			REL-965

COUNTY ENGINEER'S COPY

CITY OF GLENDALE

BOOK 15 PAGE 11
 FILED WITH LOS ANGELES COUNTY RECORDER
 JUL 26 1976

DIST	COUNTY	ROUTE	POST MILES	SHEET NO	TOTAL SHEETS
07	LA	2	20.9	11	11

R.W. F. [Signature]
 SENIOR TRANSPORTATION ENGINEER
 RIGHT OF WAY ENGINEERING
 REGISTERED CIVIL ENGINEER NO. 6079

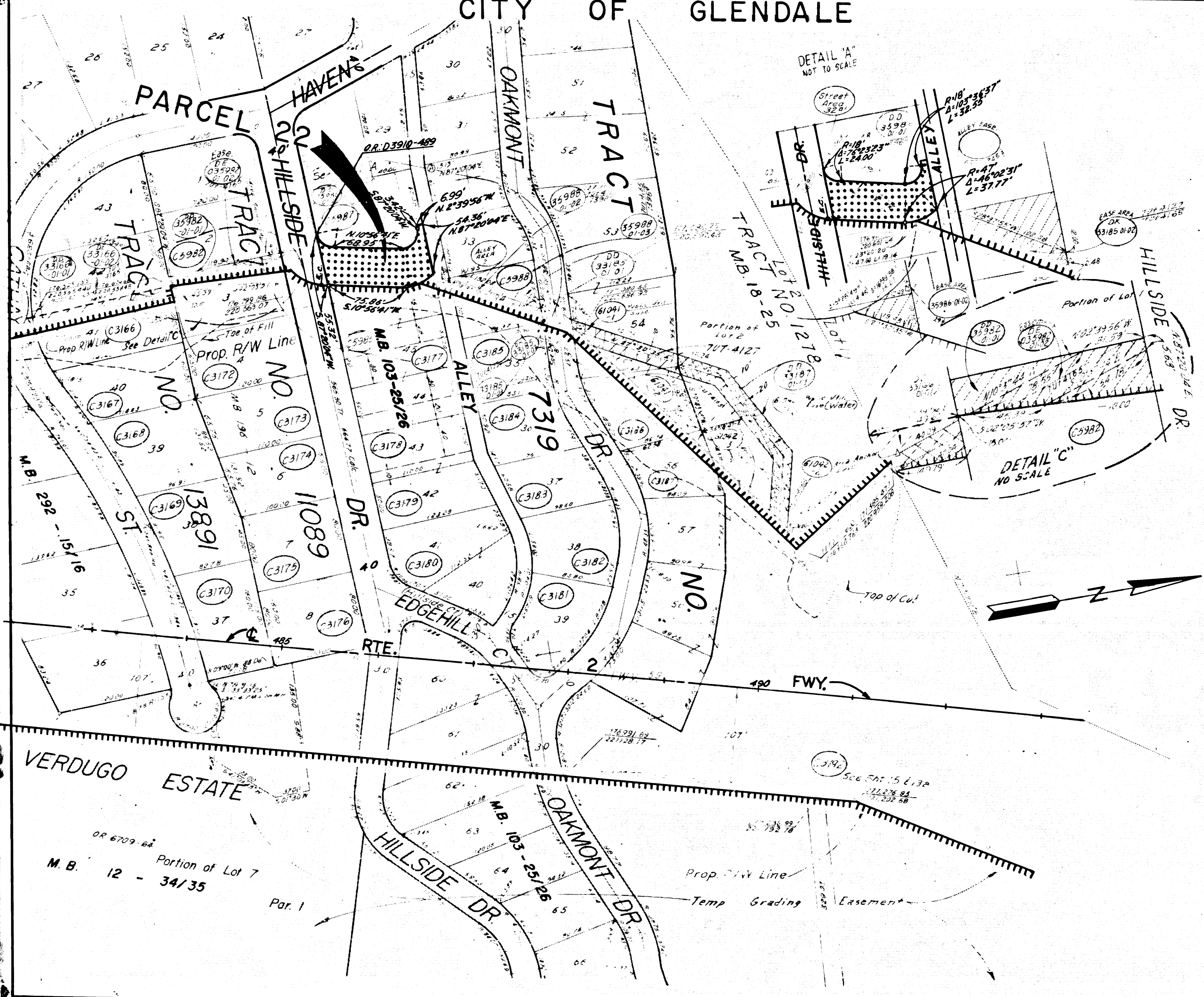
5-3-76
 DATE

Recorded in the Office
 of the County Recorder

LOS ANGELES COUNTY

S.H.M.B. No. Pg.

DATE



STATE OF CALIFORNIA
 BUSINESS AND TRANSPORTATION AGENCY
 DEPARTMENT OF TRANSPORTATION

PROPOSED RELINQUISHMENT

0 50 100 150 200

AREA TO BE RELINQUISHED [Symbol]
 ACCESS PROHIBITED [Symbol]

DR'N BY	R. D.	R/W MAP NO.	F1271-7
C'LC BY	E. T.	CONTRACT NO.	07-045334
C'K'D BY			REL-965
REVISED			

COUNTY ENGINEER'S COPY