

Bia 15 ps 13

BOOK 15 PAGE 13

STATE OF CALIFORNIA
BUSINESS AND TRANSPORTATION AGENCY
DEPARTMENT OF TRANSPORTATION

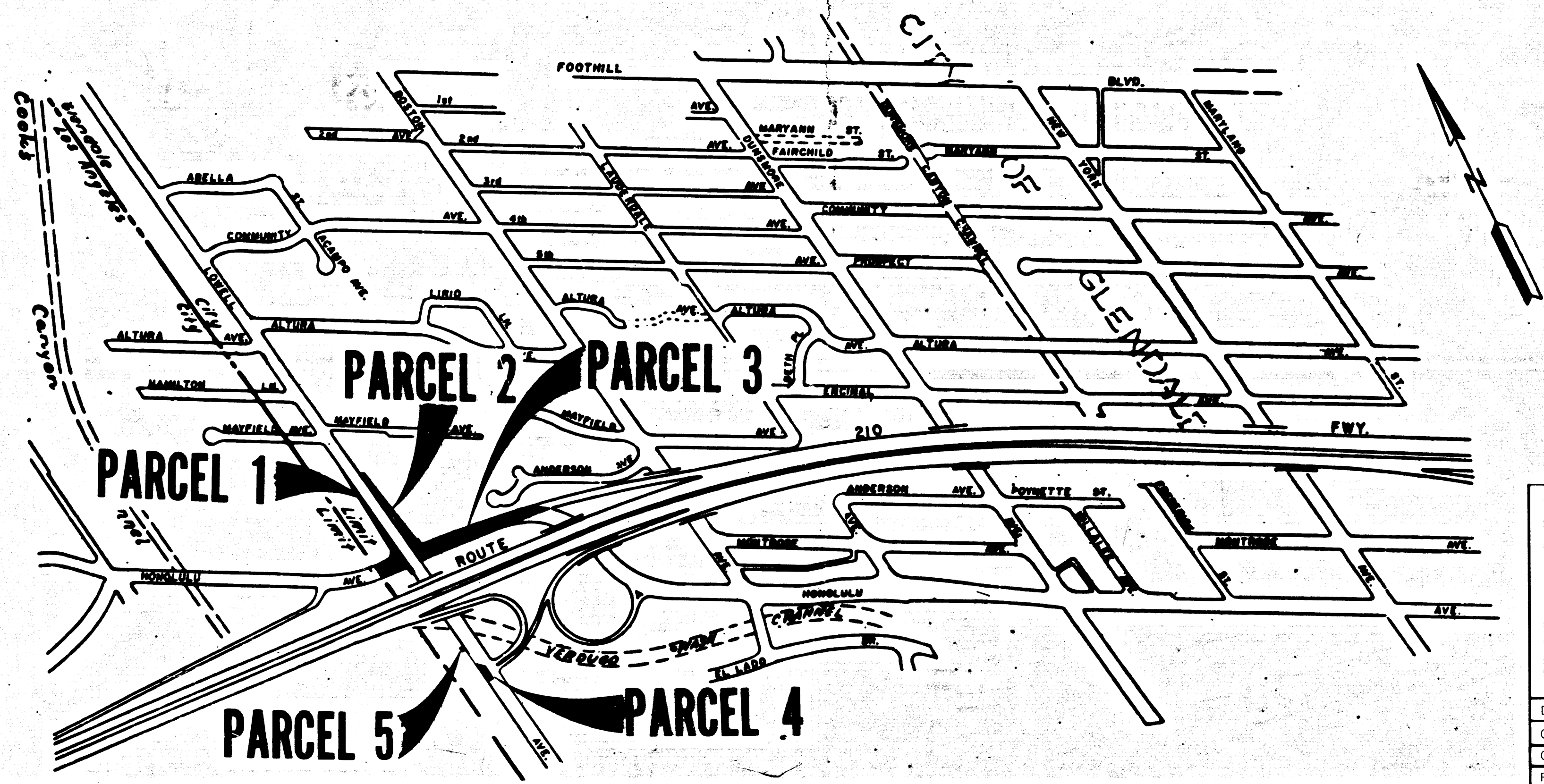
4192
FILED
AT REQUEST OF
DEPT. OF PUBLIC WORKS
AUG 11, 1976
27 2 PM
IN BOOK 15
AT PAGE 13
OF STATE HIGHWAY MAPS
LOS ANGELES COUNTY, CALIF.
COUNTY RECORDER
J. J. [Signature]
DAILY FREE

DIST	COUNTY	ROUTE	POST MILES	SHEET NO.	TOTAL SHEETS
07	LA	210	15.6	1	3

R. W. Feltner
RIGHT OF WAY ENGINEERING
REGISTERED CIVIL ENGINEER NO. 6079
DATE 6-6-76

Recorded in the Office
of the County Recorder
LOS ANGELES COUNTY
S.H.M.B. No. Pg.

RIGHT OF WAY MAPS OF
STATE HIGHWAY
In the City of Glendale, along Route 210 Fwy.
at Honolulu Ave. and Lowell Ave.



INTERSTATE

STATE OF CALIFORNIA
BUSINESS AND TRANSPORTATION AGENCY
DEPARTMENT OF TRANSPORTATION

PROPOSED RELINQUISHMENT

0 600 1200 1800 2400

AREA TO BE RELINQUISHED

DR'N BY <i>DF</i>	R/W MAP NO <i>F-1205/1206</i>
C'LC BY <i>JC</i>	CONTRACT NO <i>07-063764</i>
C'K'D BY <i>AM</i>	REVISED

REL- 975

30

COUNTY ENGINEER'S COPY

BY 152514

BOOK 15 PAGE 14

DIST	COUNTY	ROUTE	POST MILES	SHEET NO.	TOTAL SHEETS
07	LA	210	15.6	2	3

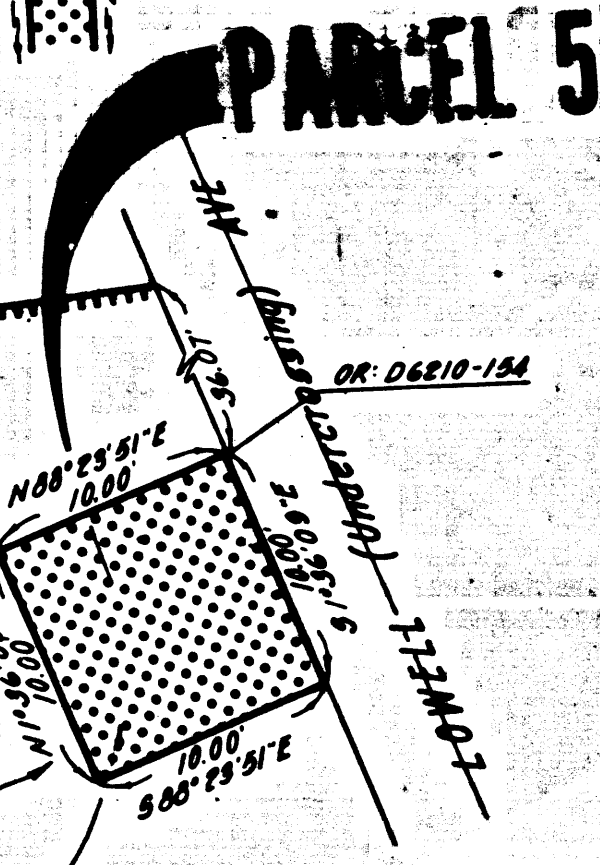
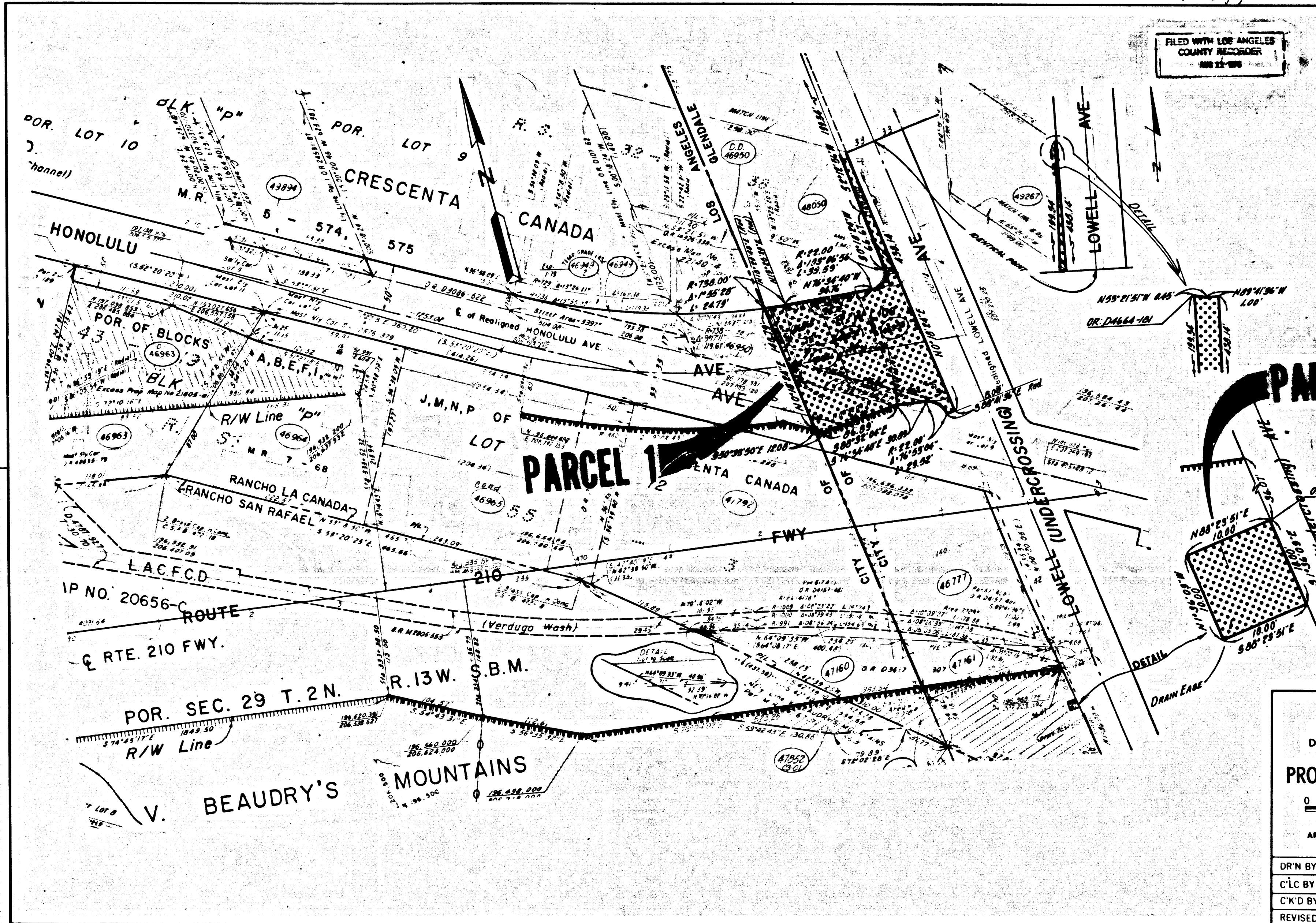
FILED WITH LOS ANGELES COUNTY RECORDER
 1982-11-18

AW/FM
 SENIOR TRANSPORTATION ENGINEER
 RIGHT OF WAY ENGINEERING
 REGISTERED CIVIL ENGINEER NO. 6079

6-6-76
 DATE

Recorded in the Office
 of the County Recorder
 LOS ANGELES COUNTY

S.H.M.B. No. Pg.



INTERSTATE

STATE OF CALIFORNIA
 BUSINESS AND TRANSPORTATION AGENCY
 DEPARTMENT OF TRANSPORTATION

PROPOSED RELINQUISHMENT

0 50 100 150 200

AREA TO BE RELINQUISHED

ACCESS PROHIBITED

DR'N BY <i>DF</i>	R/W MAP NO. <i>F-1206-10</i>
C'LC BY <i>JC</i>	CONTRACT NO. <i>07-063764</i>
C'K'D BY <i>AM</i>	REL-975
REVISED	

COUNTY ENGINEER'S OFFICE

12x15 pg 15

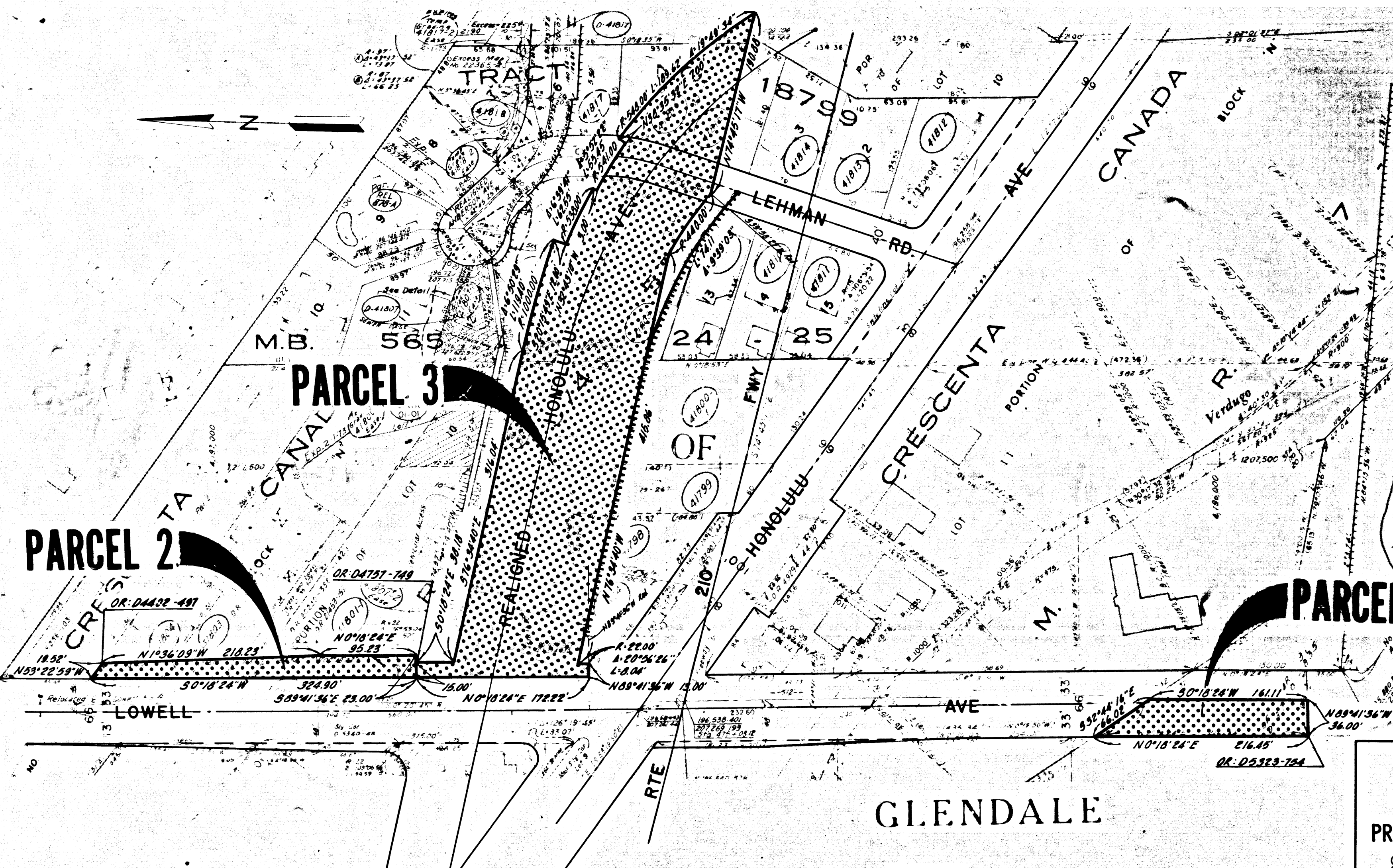
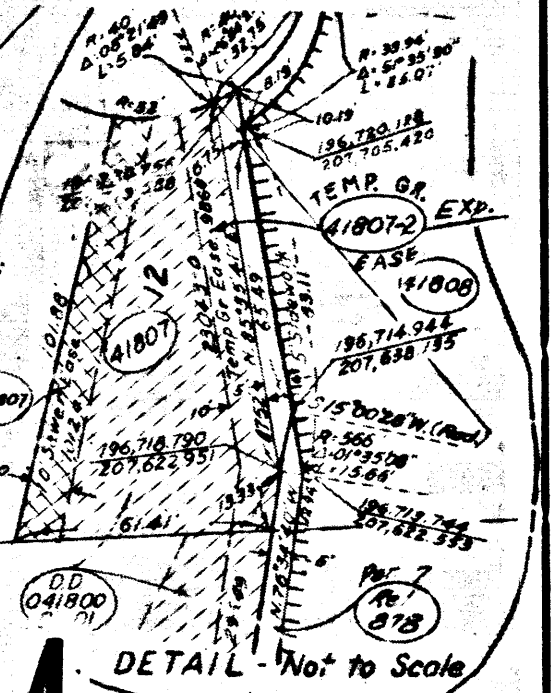
DIST	COUNTY	ROUTE	POST MILES	SHEET NO.	TOTAL SHEETS
07	LA	210	15.6	3	3

D.W.F.H.
 SENIOR TRANSPORTATION ENGINEER
 RIGHT OF WAY ENGINEERING
 REGISTERED CIVIL ENGINEER NO. 6079

DATE 6-6-76

Recorded in the Office
 of the County Recorder
 LOS ANGELES COUNTY

S.H.M.B. No. Pg.
 FILED WITH LOS ANGELES
 COUNTY RECORDER
 488 22 578



GLENDALE



GLENDALE
LOS ANGELES

INTERSTATE

STATE OF CALIFORNIA
 BUSINESS AND TRANSPORTATION AGENCY
 DEPARTMENT OF TRANSPORTATION

PROPOSED RELINQUISHMENT



AREA TO BE RELINQUISHED 
 ACCESS PROHIBITED 

DR'N BY	DF	R/W MAP NO.	F-1206-1
C'LC BY	JC	CONTRACT NO.	07-063764
C'K'D BY	AM	REL-	975
REVISED			

COUNTY ENGINEER'S COPY