

2-16-75

BOOK 15 PAGE 31

STATE OF CALIFORNIA
 BUSINESS AND TRANSPORTATION AGENCY
 DEPARTMENT OF TRANSPORTATION

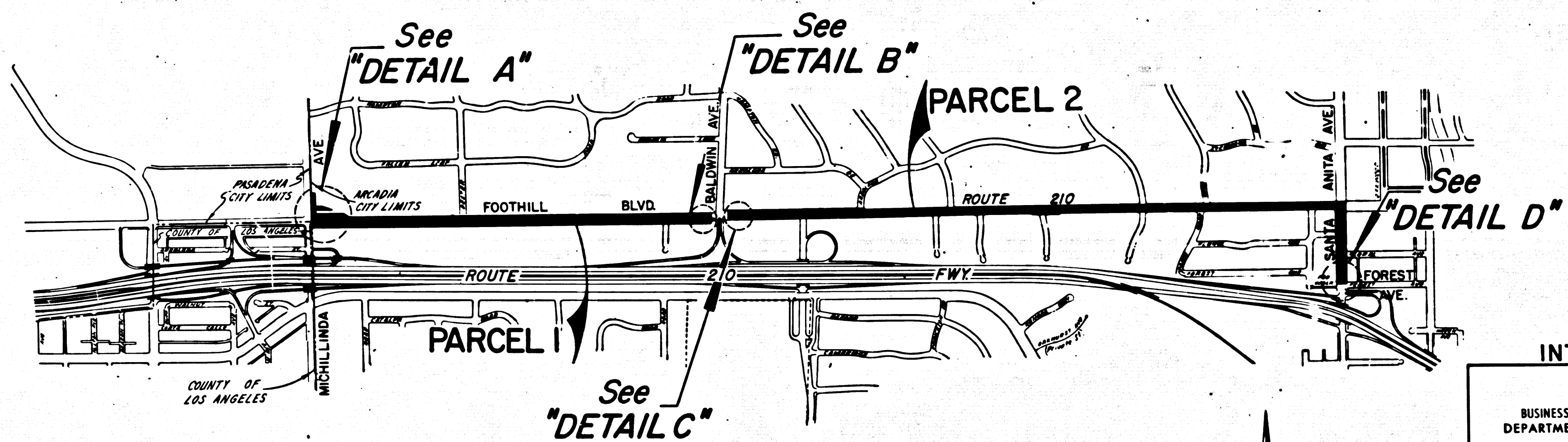
DIST	COUNTY	ROUTE	POST MILES	SHEET NO.	TOTAL SHEETS
07	C.A.	210	32.8-32.9	1	3

3935
 3935
 FILED
 AT REQUEST OF
 DEPT. OF PUBLIC WORKS
 OCT 13 1976
 27 PAST 1 PM
 IN BOOK 15
 AT PAGE 31
 OF STATE HIGHWAY MAPS
 LOS ANGELES COUNTY, CALIF.
 FREE

R.W. Williams
 RIGHT OF WAY ENGINEERING
 REGISTERED CIVIL ENGINEER NO. 6079
 9-17-76
 DATE

Recorded in the Office
 of the County Recorder
 LOS ANGELES COUNTY
 S.H.M.B. No. Pg.

RIGHT OF WAY MAPS OF
 STATE HIGHWAY
 In the City of Arcadia on Foothill Blvd. (Route 210)
 between Michillinda Ave. and Santa Anita Ave.
 And on Santa Anita Ave. between Foothill Blvd. (Route 210) and Forest Ave.



CITY OF ARCADIA

INTERSTATE

STATE OF CALIFORNIA
 BUSINESS AND TRANSPORTATION AGENCY
 DEPARTMENT OF TRANSPORTATION

PROPOSED RELINQUISHMENT

0 600 1200 1800 2400

AREA TO BE RELINQUISHED

DR'N BY <i>L. Kuehn</i>	R/W MAP NO. <i>F-1220</i>
C'LC BY <i>J. Morris</i>	CONTRACT NO. <i>033774</i>
C'K'D BY <i>H. Lee</i>	REL- 848
REVISED <i>9-16-75</i>	

31

COUNTY ENGINEER'S COPY

DIST	COUNTY	ROUTE	POST MILES	SHEET NO.	TOTAL SHEETS
07	L.A.	210	302-328	2	3

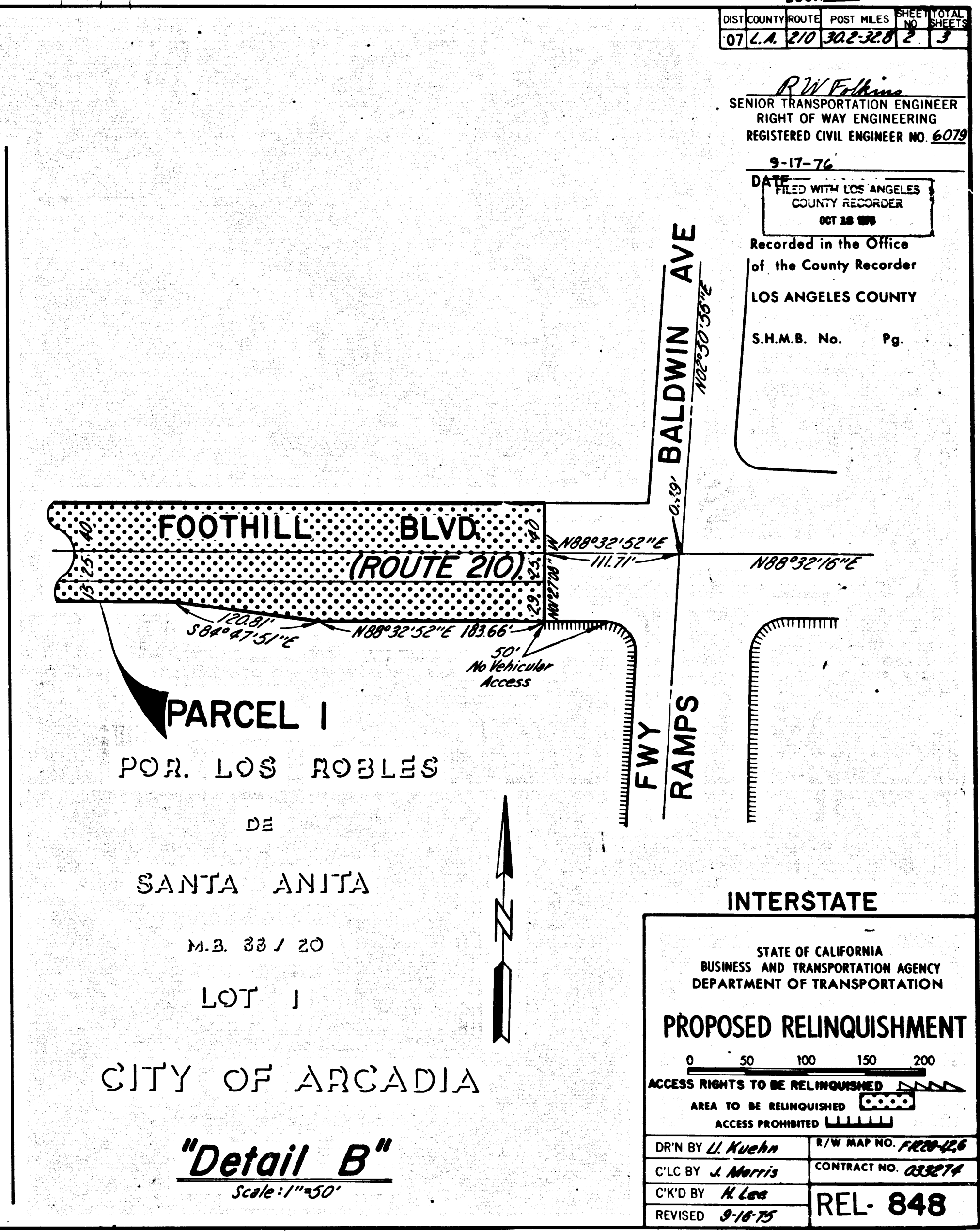
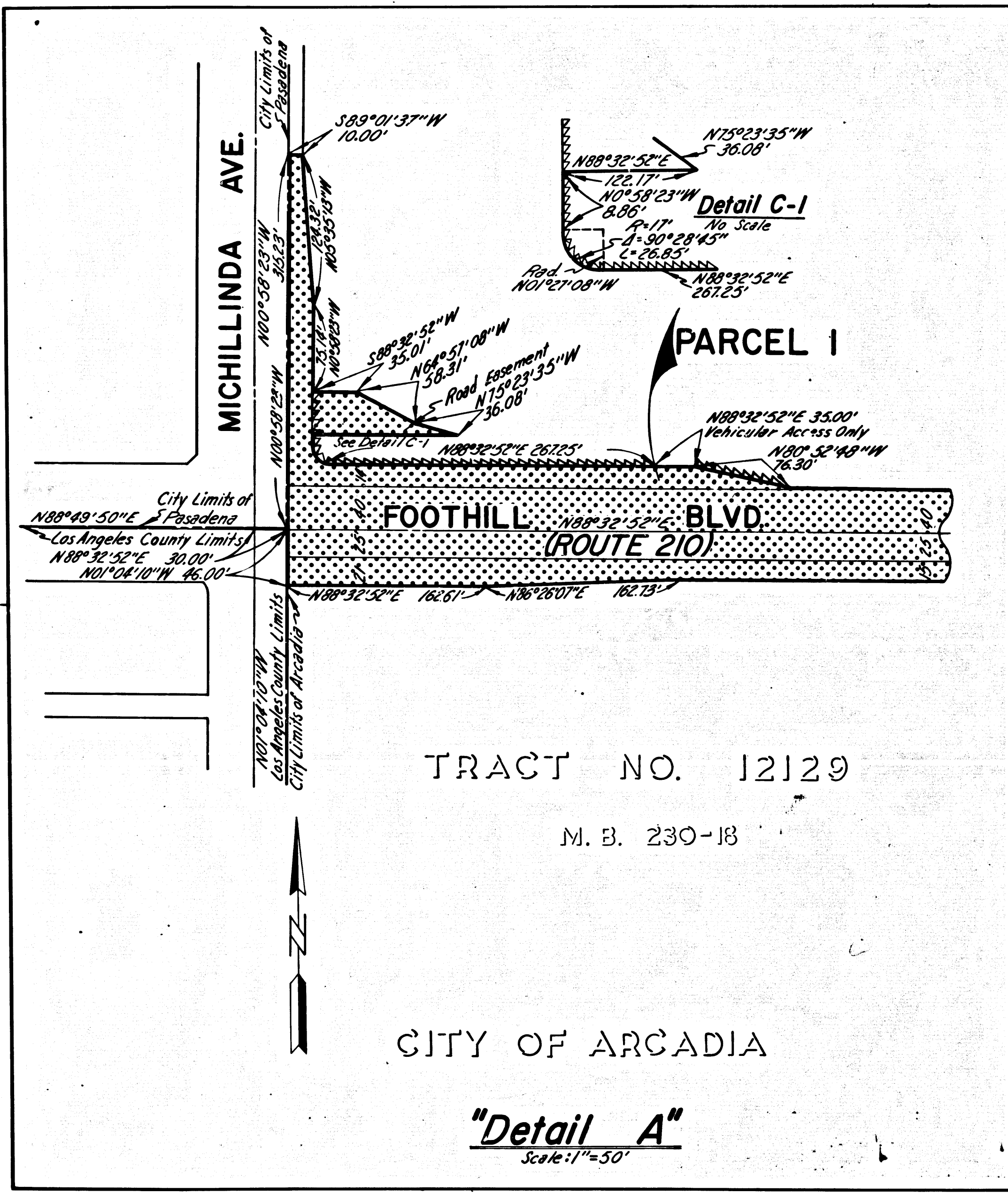
R.W. Feltz
 SENIOR TRANSPORTATION ENGINEER
 RIGHT OF WAY ENGINEERING
 REGISTERED CIVIL ENGINEER NO. 6079

9-17-76
 DATE FILED WITH LOS ANGELES COUNTY RECORDER
 OCT 28 1976

Recorded in the Office of the County Recorder

LOS ANGELES COUNTY

S.H.M.B. No. Pg.



COUNTY ENGINEER'S COPY

PL 15 33

BOOK 15 PAGE 33

DIST	COUNTY	ROUTE	POST MILES	SHEET NO.	TOTAL SHEETS
07	L.A.	210	302-328	3	3

R.W. Williams
 SENIOR TRANSPORTATION ENGINEER
 RIGHT OF WAY ENGINEERING
 REGISTERED CIVIL ENGINEER NO. 6079

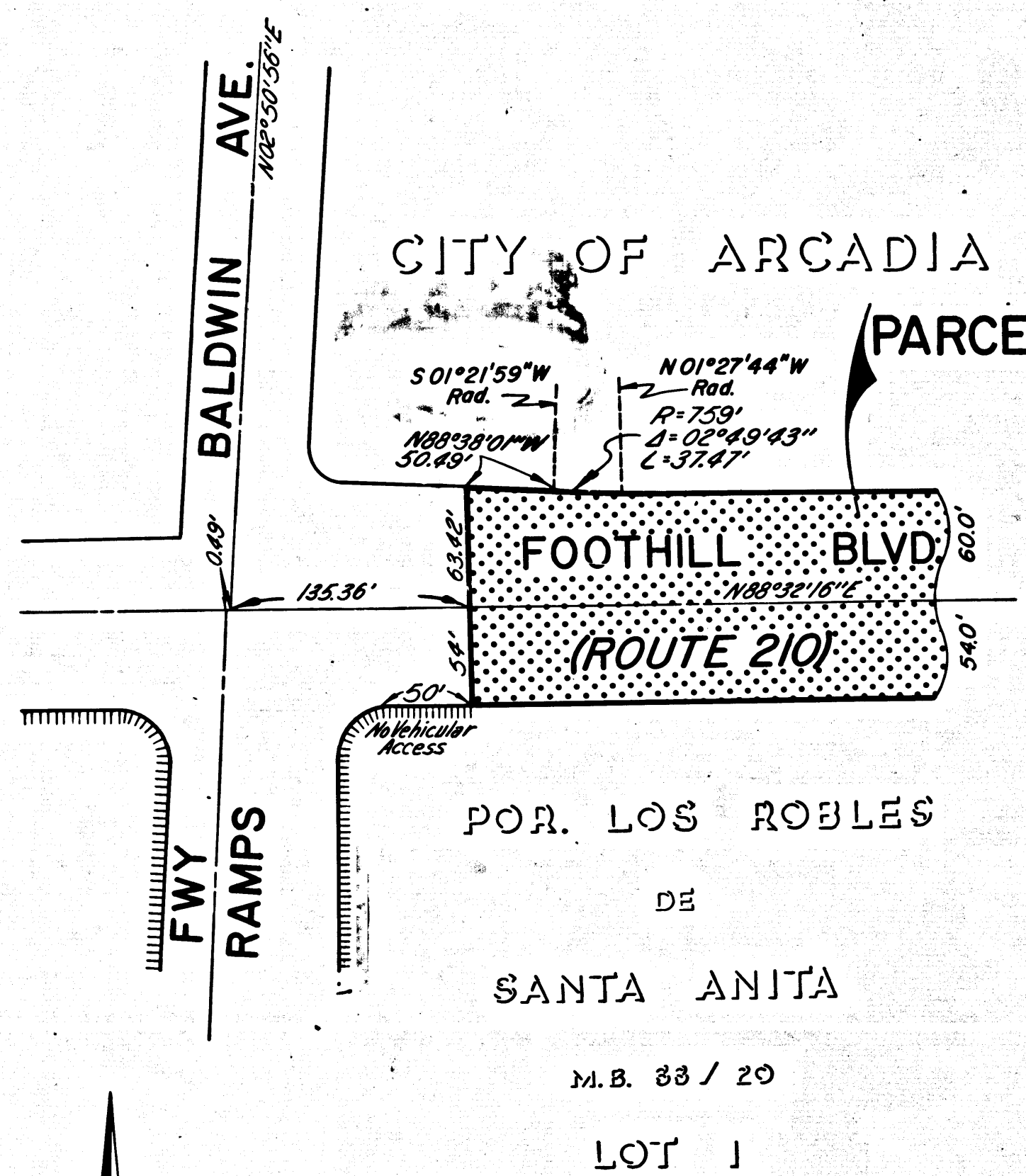
9-7-76
 DATE

Recorded in the Office
 of the County Recorder
 LOS ANGELES COUNTY

S.H.M.B. No. Pg.
 FILED WITH LOS ANGELES
 COUNTY RECORDER
 OCT 18 1976

M.B. 83-30

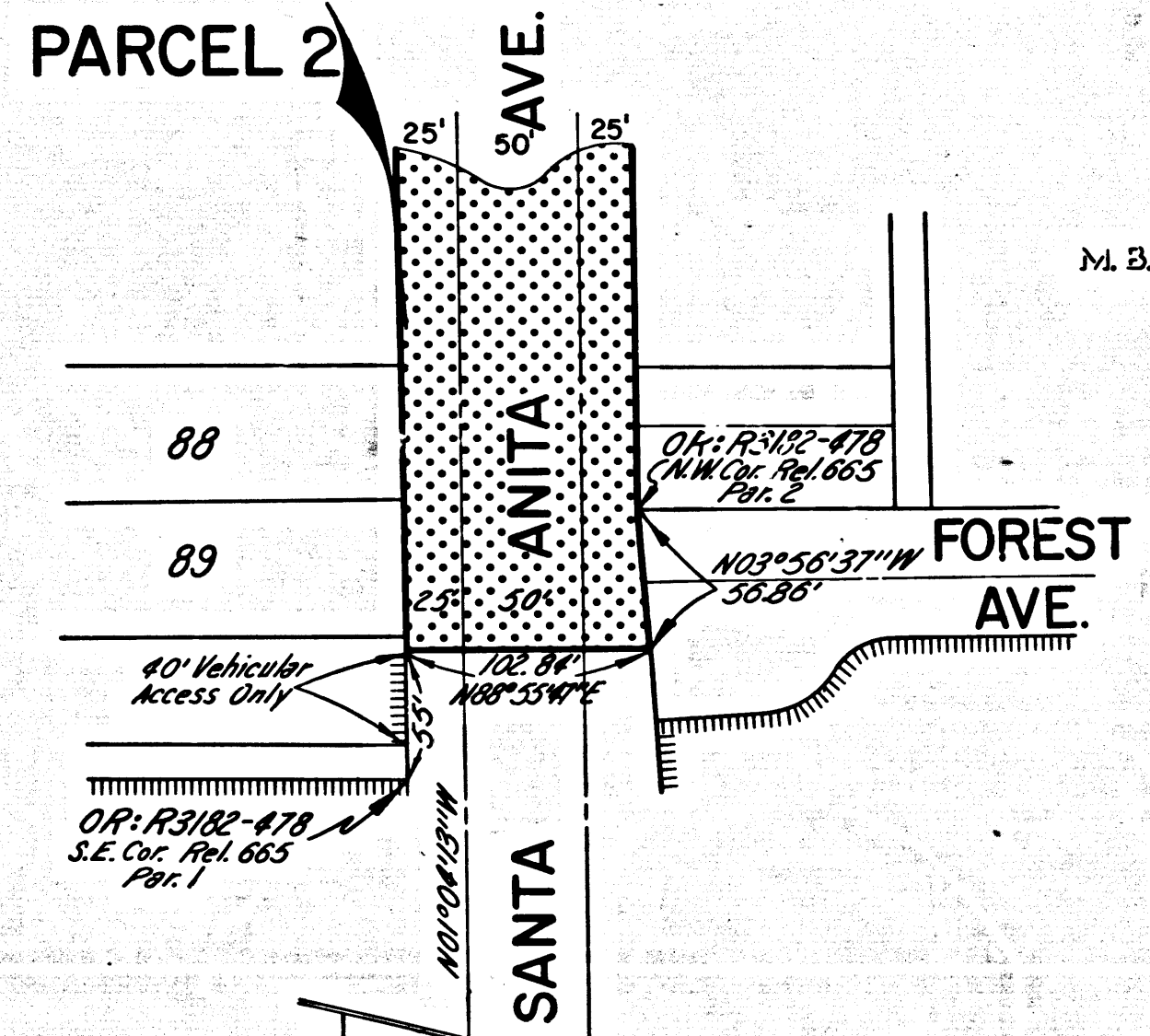
CITY OF ARCADIA
 PARCEL 2



"Detail C"

CITY OF ARCADIA

TRACT NO. 7820



"Detail D"

INTERSTATE

STATE OF CALIFORNIA
 BUSINESS AND TRANSPORTATION AGENCY
 DEPARTMENT OF TRANSPORTATION

PROPOSED RELINQUISHMENT

0 50 100 150 200

AREA TO BE RELINQUISHED ACCESS PROHIBITED

DR'N BY	<i>L. Kuehn</i>	R/W MAP NO.	11200
C'LC BY	<i>J. Morris</i>	CONTRACT NO.	033274
C'K'D BY	<i>H. Lee</i>		
REVISED	9-16-75		

REL- 848

COUNTY ENGINEER'S COPY