

4X 15 ... 21

BOOK 15 PAGE 34

STATE OF CALIFORNIA
BUSINESS AND TRANSPORTATION AGENCY
DEPARTMENT OF TRANSPORTATION

RIGHT OF WAY MAPS OF
STATE HIGHWAY

In the City of Los Angeles on Topanga Canyon Blvd.
0.1 Mile So. of Parthenia St.

DIST	COUNTY	ROUTE	POST MILES	SHEET NO.	TOTAL SHEETS
07	LA	27	16.37	1	2

77-241864
FILED
AT REQUEST OF
DEPT. OF PUBLIC WORKS
MAR 9 1977
1 PAST 11 AM
BY BOOK 15
PAGE 34
OF STATE HIGHWAY MAPS
LOS ANGELES COUNTY, CALIF.
COUNTY RECORDER
J. ...
FREE

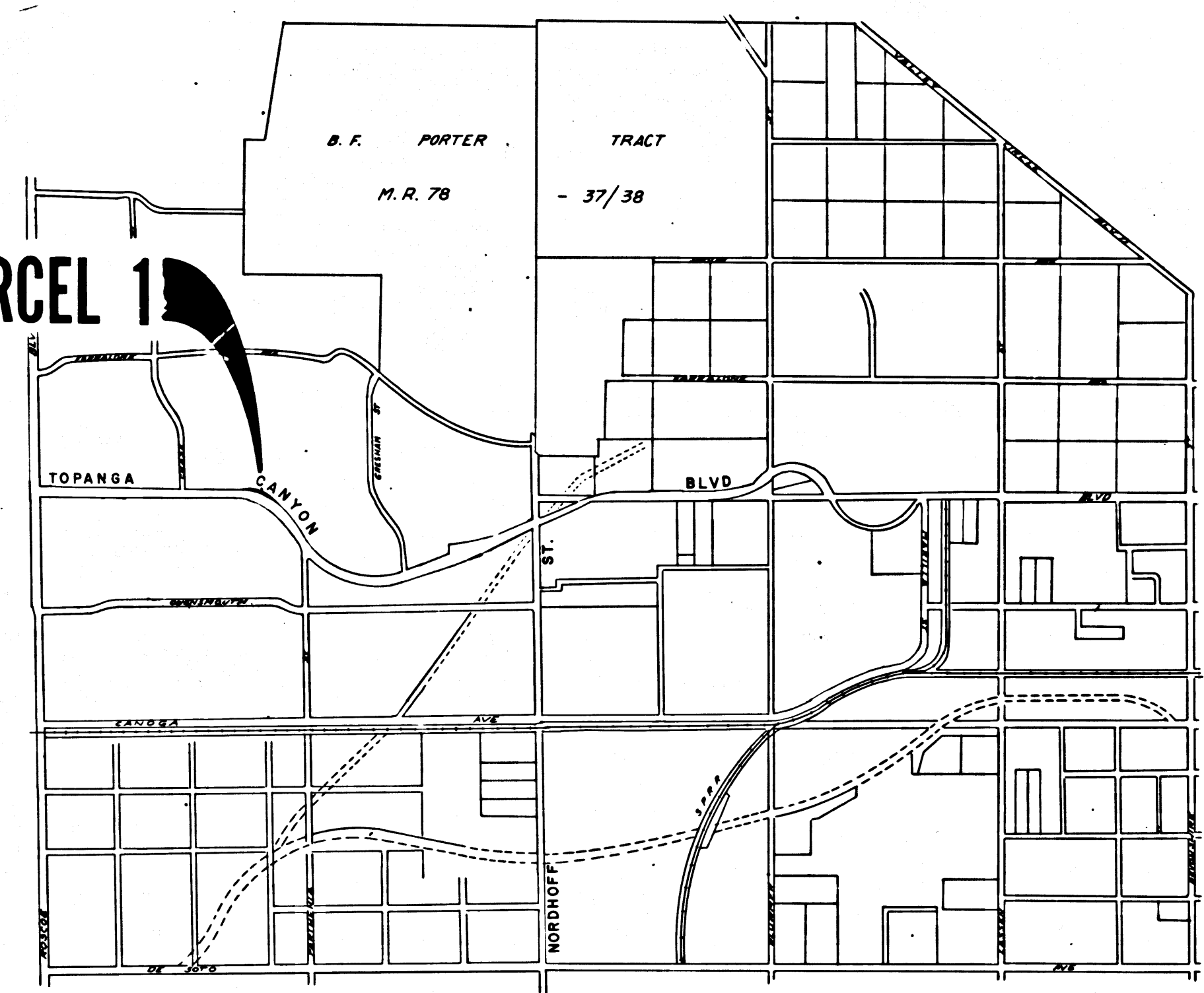
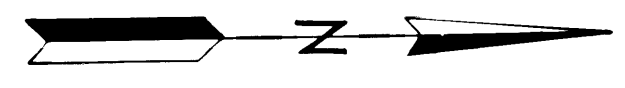
R.W. Williams
RIGHT OF WAY ENGINEERING
REGISTERED CIVIL ENGINEER NO. 6079
DATE 8-13-76

Recorded in the Office
of the County Recorder
LOS ANGELES COUNTY
S.H.M.B. No. Pg.

CITY OF

PARCEL 1

LOS ANGELES



STATE OF CALIFORNIA
BUSINESS AND TRANSPORTATION AGENCY
DEPARTMENT OF TRANSPORTATION

PROPOSED ABANDONMENT



AREA TO BE ABANDONED

DR'N BY	D.F.	R/W MAP NO.	6764
C'LC BY	J.C.	CONTRACT NO.	64-TV13058
C'K'D BY	H.V.		ABD-116
REVISED			

COUNTY ENGINEER'S COPY

PK 15 35

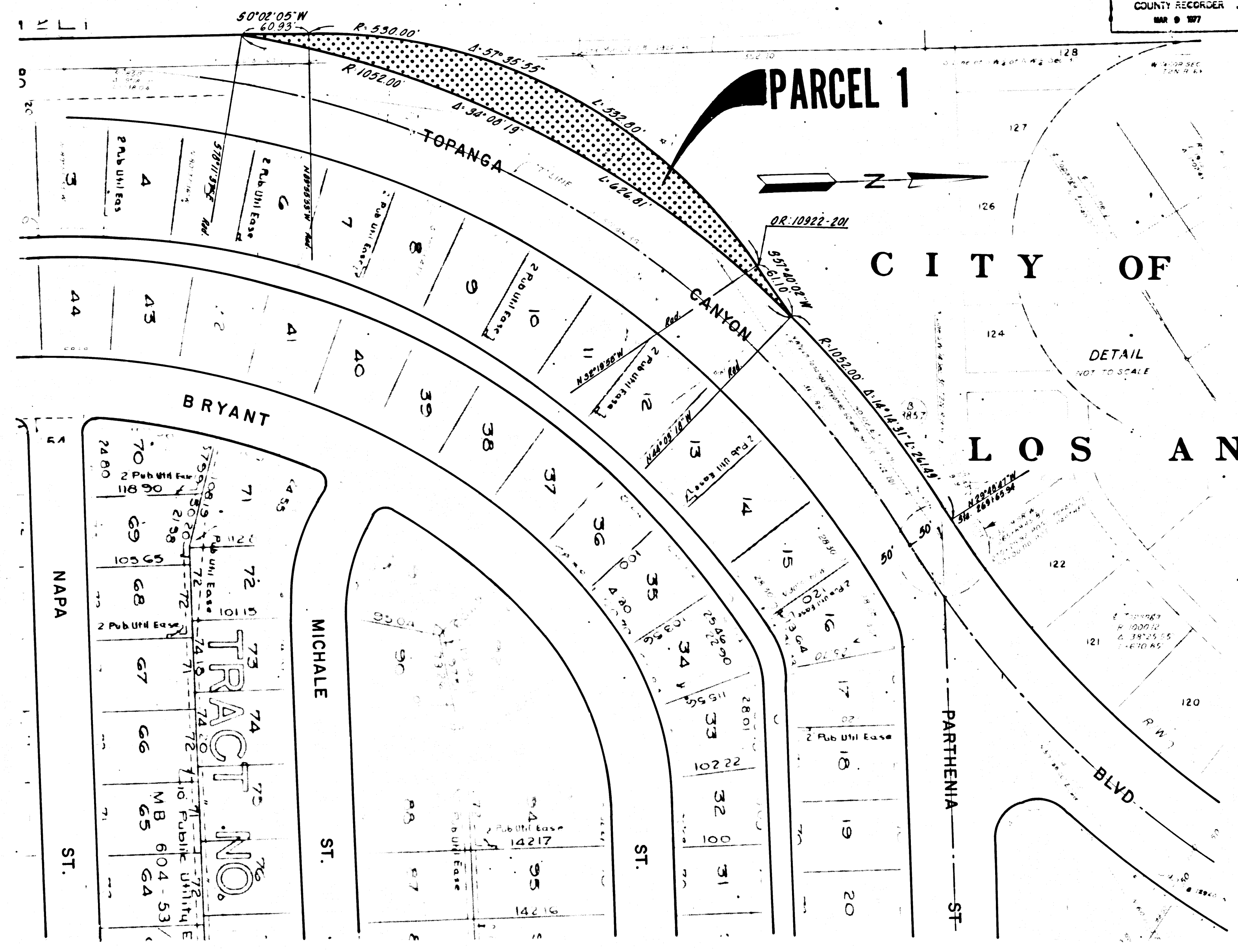
BOOK 15 PAGE 35

FILED WITH LOS ANGELES COUNTY RECORDER MAR 9 1977

DIST	COUNTY	ROUTE	POST MILES	SHEET NO.	TOTAL SHEETS
07	LA	27	16.37	2	2

R.W. Feltine
 SENIOR ENGINEER,
 RIGHT OF WAY ENGINEERING
 REGISTERED CIVIL ENGINEER NO. 6079
 8-13-76
 DATE

Recorded in the Office
 of the County Recorder
 LOS ANGELES COUNTY
 S.H.M.B. No. Pg.



CITY OF
 LOS ANGELES

DETAIL NOT TO SCALE

STATE OF CALIFORNIA
 BUSINESS AND TRANSPORTATION AGENCY
 DEPARTMENT OF TRANSPORTATION

PROPOSED ABANDONMENT

0 50 100 150 200

AREA TO BE ABANDONED [Dotted Pattern]
 ACCESS PROHIBITED [Hatched Pattern]

DR'N BY <i>DF</i>	R/W MAP NO. 6764
C'LC BY <i>JC</i>	CONTRACT NO. 64-7V13C58
C'K'D BY <i>HV</i>	ABD-116
REVISED	

COUNTY ENGINEER'S COPY